



混凝土臂架泵车  
CONCRETE PUMP TRUCK



青岛晟源达威机械有限公司

QINGDAO SAINTYOL DAWIN MACHINERY CO.,LTD

地址：青岛市城阳区玉皇岭工业园  
Office: 216# THE 308 STATE ROAD,  
Chengyang District, Qingdao, China.

Factory: No.413# Tieqishan Road,  
Yuhuangling Industrial Park,  
Chengyang District, Qingdao, China

Tel/whatsapp: +86 186 6979 8625  
Email: info@saintyoldawin.com  
Web: www.saintyoldawin.com

# 晟源达威集团简介

## Brief introduction of Saintyol DAWIN Group

晟源达威集团创建于1993年，是一家专业从事混凝土工程机械设备研发、制造、销售及服务于一体的国家高新技术企业，公司总部位于世界工业互联网之都——青岛。

晟源达威集团现有30米-75米混凝土泵车，23米-70米高空作业车，混凝土输送泵，布料机，湿喷台车等多个系列的专业设备。

经过近30年的技术沉淀，科尼乐在引进德国先进技术基础上，建立技术研究院，与清华大学等多所国内外高校和科研院所合作，不断进行研发创新，广招高水平技术人才，在结构、液压、电气方面均处在行业领先水平，先后获得国家授权专利400余项。

晟源达威始终秉承精益化管理理念，通过ISO9001质量管理体系认证，3C认证；拥有完善的质量管理体系，采用最先进的加工工艺和科学严谨的检测手段，使得产品性能稳定，结构先进，广泛应用于国内各省市，出口50多个国家和地区，深受广大国内外客户的青睐。2020年入选青岛首批先进性评价“青岛标准”，代表了青岛混凝土泵车等高端装备制造的先进水平。

晟源达威在全国已建成青岛、西安二大生产基地，北京、上海、西安、重庆、武汉等30余家销售办事处和56处售后服务站，晟源达威强大的服务工程师团队以24小时无微不至的关怀，给客户带来更好更专业的服务体验。

晟源达威集团凭借先进的科技创新水平、优秀的标准化管理水平以及强大的品牌影响力，荣获国家高新技术企业、国家4A级标准化工作良好企业称号，省著名商标，市专精特新示范企业等多项荣誉；主编、参编多项国家标准、行业标准和团体标准；产品先后参加过北京亚运村，青岛国际机场扩建，青银高速路和长江大堤等一系列国家级大中型工程项目建设。在众多用户和各界朋友们的鼎力支持下，晟源达威已发展成为全国优秀的混凝土机械制造商之一。

晟源达威集团坚持做专、做精、做久，以做百年企业为发展愿景，在中国制造做大做强的道路上，期望与更多志同道合的合作伙伴携手前行。

SAINTYOL DAWIN, founded in 1993, is a national high-tech enterprise specializing in the research and development, manufacturing, sales and service of concrete engineering machinery and equipment. The company is headquartered in the industrial Internet capital of the world - Qingdao.

SAINTYOL DAWIN has a series of professional equipment, such as 30-75 meters concrete pump truck, 23-70 meters aerial work truck, concrete pump, concrete placing boom, wet spraying trolley and so on.

After nearly 30 years of precipitation technology, SAINTYOL DAWIN set up technology research institute, and tsinghua university and other colleges and universities in the domestic and foreign cooperation with scientific research institutes based on the introduction of Germany advanced technology, ongoing research and development innovation, recruiting high levels of technical personnel. We are in the leading level on the aspect of structure, hydraulic, electric, electrical and have more than 400 national authorized patents.

SAINTYOL DAWIN has always been adhering to the concept of lean management, we have through the ISO9001 certification, 3C certification; With perfect quality management system, using the most advanced processing technology and scientific and rigorous testing means, our products have stable performance and advanced structure, widely used in domestic provinces and cities, exported to more than 50 countries and regions, favored by the majority of domestic and foreign customers. In 2020, it was selected as the first batch of Qingdao advanced evaluation "Qingdao Standard", which represents the advanced level of Qingdao concrete pump truck and other high-end equipment manufacturing.

SAINTYOL DAWIN has built three production bases in Qingdao, Xi'an, and more than 30 sales offices and 56 after-sales service stations in Beijing, Shanghai, Xi'an, Chongqing and Wuhan. The powerful service engineer team of SAINTYOL DAWIN provides customers with better and more professional service experience with meticulous care 24 hours a day.

With advanced technological innovation level, excellent standardized management level and strong brand influence, SAINTYOL DAWIN has won the title of National high-tech Enterprise, national 4A-level Enterprise with good standardization work, provincial famous trade mark, municipal specialized special new demonstration enterprise and many other honors. Chief editor and editor of a number of national standards, industry standards and group standards; Our products have participated in a series of national-level large and medium-sized projects such as Beijing Asian Games Village, Qingdao International Airport expansion, Qingda-Yinchuan Expressway and Yangtze River Embankment. With the support of many users and friends, SAINTYOL DAWIN has developed into one of the outstanding concrete machinery manufacturers in China.

SAINTYOL DAWIN group adheres to the vision of specialization, refinement and durability, and takes century-old enterprise as its development vision. On the road of Chinese making bigger and stronger, SAINTYOL DAWIN expects to move forward with more like-minded partners.



# 晟源达威机械



# 企业文化

## Corporate Culture

科尼乐集团秉承“拼搏进取，追求卓越”的企业精神，技术不断改革创新，产品不断升级，致力于打造国内领先，国际一流的建机品牌。

Qingdao SAINTYOL Group inherit “enterprising and pursuing excellent” corporate spirit reform and innovate technology constantly, upgrade products to create domestic leading and international first class construction machinery brand.

### 企业使命

持续为客户创造更大的价值

为员工提供实现人生价值的平台

为社会承担更多的责任

### Enterprise's Missions

Continue to create greater value for customers

Provide a platform for employees to realize the value of their life

Take more responsibility for our society

### 企业核心价值观

正直，团队，诚信，主动，可持续

### Enterprise's Core Values

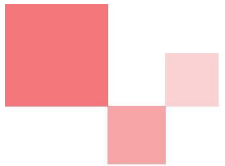
Integrity, Teamwork, Integrity, Initiative, Sustainability

# 目录

## Contents

|       |                                                                 |
|-------|-----------------------------------------------------------------|
| 01-02 | 企业标语<br>Enterprise Slogan                                       |
| 03-04 | 发展历程<br>Development History                                     |
| 05-06 | 企业资质<br>Enterprise Qualification                                |
| 07-08 | 泵车介绍<br>Truck Brief                                             |
| 09-12 | 泵车优势<br>Truck Advantage                                         |
| 13/16 | 泵车配件<br>Truck Accessories                                       |
| 17/18 | 38米 混凝土臂架泵车系列<br>39m Concrete pump truck series                 |
| 19/20 | 39米 混凝土臂架泵车系列<br>39m Concrete pump truck series                 |
| 21/22 | 52米 混凝土臂架泵车系列<br>52m Concrete pump truck series                 |
| 23/24 | 58米汕德卡 混凝土臂架泵车系列<br>58m SITRAK Concrete pump truck series       |
| 25/26 | 60/63米汕德卡 混凝土臂架泵车系列<br>60/63m SITRAK Concrete pump truck series |
| 27/28 | 70米汕德卡 混凝土臂架泵车系列<br>70m SITRAK Concrete pump truck series       |
| 29/30 | 案例<br>Case                                                      |





传递梦想 凝结友谊  
Delivering Dream, Concreting Friendship

## 企业标语 Enterprise Slogan

信义立天下，品质创世界

FAITH MADE THE WORLD  
QUALITY AND THE WORLD





# 发展历程

## Development History

**2001年** 高速铁路制梁泵、混凝土泵在科尼乐重工诞生；青银高速隧道项目水平输送距离1600米一次成功；青岛滨海大道填海项目单台连续泵送混凝土21天，输送混凝土量35000方。  
In 2001, the Highway Beam-making Pump and Concrete Pump were born at Co-nile; the QingYin Highway Tunnel Project was successfully delivered at a horizontal distance of 1600m; one single Concrete Pump was pumped continually for 21 days for Qingdao BinHai Avenue Reclamation Project, and the concrete volume was 35,000m³.

**2008年** 阿联酋（迪拜）投资山东第一高楼混凝土泵送设备供应厂家；铁道部工程交易展销会重点推荐产品。  
In 2008, we became the concrete pumping equipment supplier for The UAE (DUBAI) who invests the Shandong Tallest Building; and we also became the focused recommending products for the Ministry of Railway Engineering Trade Fair.

**2011年** 21米、30米、37米等小型双桥臂架泵车研制成功并批量生产，取得广大客户一致好评。  
In 2011, Small Double Axle Truck Boom Pump (21m, 30m, 37m) were successfully developed and start mass production, and we won unanimous praises from our customers.

**2014年** 矿用泵取得国家煤安认证。  
In 2014, the Mining Pump obtained National Coal Safety Certification.

**2010年** 广西分公司成立。  
In 2010, Guangxi Branch was established.

**2005年** 与德国科尼乐正式签订技术合作，混凝土泵、车载泵、布料机批量生产，同年，国内38米液压布料机出口俄罗斯。  
In 2005, we formally signed a Technical Cooperation Agreement with Germany KENILE, we started mass production of Concrete Pump, Truck-mounted Pump and Concrete Placing Boom. In the same year, we exported 38m Hydraulic Concrete Placing Boom to Russia.

**2012年** 陕西分公司成立。  
In 2012, Shanxi branch was established.

**2015年** 50米、58米、63米等大型臂架泵车研制成功并批量生产，全面推向市场。  
In 2015, Large Truck Boom Pump (50m, 58m, 63m) were successfully developed and start mass production, widely welcomed to the market.

**2016年** 公司挂牌上市签约仪式正式启动。  
In 2016, Our Company's Listing Signing Ceremony was officially launched.

**2020年** 高空作业车研制成功并批量生产。  
In 2020, the aerial work vehicle was successfully developed and mass produced.

**2018年** 陕西生产基地扩建搬迁。  
In 2018, the Shanxi production base was expanded and relocated.

**2021年** 70米大型臂架泵车研制成功并批量生产，全面推向市场。  
In 2021, our 70m large boom pump truck was successfully developed and mass-produced, and widely introduced to the market.





**SAINTYOL**  
DAWIN MACHINERY





Qingdao Saintyol DAWIN Machinery Co., Ltd. adopt advanced technology and experience, use advanced computer simulation technology to research and manufacture pump truck. We analyze the pump truck structure to know the stress, displacement, and natural frequency of various parameters to change the influence on boom fatigue. Meanwhile we have optimize the hydraulic system and adopt new free fluid technology, reduce the impact to boom for the pump transition. So we got many patent on the structure optimization and hydraulic system.

Perfect product quality, keep improving the product manufacturing, meticulous quality inspection to make Saintyol DAWIN concrete pump truck reach the leading domestic international advanced level. The boom system all are made of high strength stell cold roling steel plate. And the yield strength is more than 1000 mpa to ensure boom system high intensity, light quality. we deal with stress after 100% welding for the pump boom, supporting leg, fuel tanks. Each weld of boom system are through 100% non-destructive inspection or X ray to put and end to hide any details of defects which make the durable performance better.

Based the accurate data of Finite element analysis, dynamic simulation analysis, the pump boom system structrue is very reasonable, and the performance is excellent. The national testing center have strss strain test to prove that the boom calculation is consistent with the actual working condition.

晟源达混凝土泵车是青岛晟源达威机械有限公司借鉴国内外先进经验，运用现代先进计算机仿真技术，系统分析泵车结构所受的应力、位移、固有频率等各类参数变化对臂架疲劳寿命的影响，同时对液压系统进行优化设计，采用新的自由流体技术，大幅减小泵送换向对臂架的冲击，在泵车臂架结构优化和液压系统设计上获得了多项专利。

完善的产品质量控制，精益求精的产品制造，一丝不苟的质量检验使晟源达威泵车达到国内、国际先进水平，臂架系统所有的钢板全部采用高强冷轧钢板，屈服强度在1000Mpa 以上确保臂架系统强度高、质量轻。臂架系统布料杆、支腿、油箱等100%进行焊后去应力处理。臂架系统每一条焊缝均经过100%无损探伤或X光照片，杜绝隐藏任何细节的缺陷，耐用性能更加出色。通过有限元分析、动力学仿真分析的精确数据支持作为设计基础，确保臂架系统结构合理，性能优异，并由国家级检测中心进行应力应变检测验证臂架结构计算分析结果与实际工况的一致性。



## 智能高效

Intelligent and efficient

## 优势 Advantages

### 超强的泵送能力

#### Super Pumping Ability

泵送出口压力超过10MPa，换向能力比行业泵车高40%，泵送系统的倾角在行业是最小之一；让泵车吸料性提高20%，不挑料，具有典型的粗粮、细粮及高标号混凝土通吃的优势。The outlet pressure of the pump is more than 10MPa, reversing capacity is 40% higher than others, Pumping System Angle is the smallest in the industry, made the pump truck suction is increased by 20%, and which has the advantage of pumping different grade concrete.

### 节能控制系统

#### Energy Saving Control System

优化动力匹配，泵送工作在发动机最佳功率动力曲线范围内，节能、高效。Optimization of power matching, pumping work in the engine optimal power curve range, energy saving and efficient.

### 高可靠性

#### High Reliability (Hi-Rel)

全面系统的计算优化能力，优选行业高可靠性配件，行业通用的易损件采购体系，完善的质量管理体系，为科尼乐泵车在行业内脱颖而出保驾护航。

Comprehensive and systematic calculation and optimization ability, high reliability accessories and general purchasing system of vulnerable parts in the industry, perfect quality management system, to make **Saintyol** pump truck stand out in the industry.



## 优势 Advantages

### 方便快捷的检修系统

#### Convenient and Quick Maintenance System

泵送系统水箱无中间拉杆，检修空间大，砼活塞推送头重量轻，轻松实现单人更换砼活塞，更换时间由行业传统泵车的2.5小时/人缩短到0.5小时/人。

The water tank of pumping system has no middle pull rod, the maintenance space is large, the weight concrete piston push head is light, so that one person can easily replace the concrete piston, and the replacement time is shortened from 2.5 hours/person to 0.5 hours/person.

### 国际化采购，原装进口关键零部件，性能更稳定，性价比更高

International Purchase, Original Imported Key Parts, More Stable Performance and Higher Cost Performance

主油泵：德国力士乐等；

控制系统：德国易福门等；

无线遥控器：专业定制；

分动箱：杰牌，南华等；

阀：意大利进口品牌。

Main Oil Pump: Germany REXROTH etc;

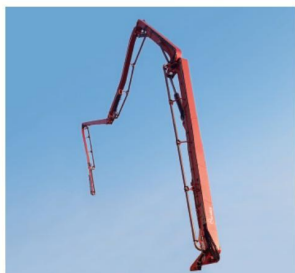
Control System: Germany IFM etc;

Wireless Remote Controller: Professional customization;

PTO Box: Jie, NANHUA etc;

Valve: Italian imported brands.





### 臂架系统 Boom System

采用高强度钢板，屈服强度是普通钢板的数倍，RZ、RZR折叠式臂架系统。臂架长，载荷越大，为保证臂架动作更加灵活，全新的科尼乐泵车采用了国际最新的外置连杆结构设计，销轴采用通轴，臂架及连杆的运动关节，经过反复测试、优化，确保臂架在整个过程中，油缸力保持平稳变化，结构设计上减少了振动源，提高了臂架的寿命40%。

Using High-strength Steel Plate, the Yield Strength is several times more than ordinary steel plate, we have RZ, RZR folding arm system. The Boom is Longer and the Load is Larger. In order to ensure the movement of the Boom is more Flexible, the New Generation CO-NELE Truck Boom Pump adopts the Latest International Design of the External Connecting Rod Structure. After repeated testing and optimization, to ensure that the Force of the Cylinder keeps changing steadily during the whole process of the Boom, the Structural Design reduces the Vibration Source and improves the Lifetime of the Boom by 40%.



### 臂架回转装置 Slewing bearing

采用高强度钢板，屈服强度是普通钢板的数倍，新式斜转塔结构，便于安装泵管与保养。

Adopt high strength steel plate, yield strength is several times the normal steel plate. With new slanted turret structure, easy to install and maintain the pipeline.



### 分体活塞 Split Piston

橡胶材质的分体活塞，抗磨损，寿命长，保障泵送要求，让使用成本低。  
Rubber material Split Piston, wear resistance, long service time, can guarantee pumping performance with low maintenance cost



### 泵送系统 Pumping System

Φ260 大直径输送缸，吸料性好，泵送排量大，出口压力大。  
泵送系统的倾角在行业是最小之一；让泵车吸料性提高20%，具有典型的粗粒、细粒及高标号混凝土通吃的优势。  
Φ260 Delivery Cylinder, Perfect Suction, Large Displacement, High Outlet Pressure. Pumping System Angle is the smallest in the industry, made the pump truck suction is increased by 20%, and which has the advantage of pumping different grade concrete.

### S管、眼镜板、切割环 S Valve, Glass Plate, Cutting Ring

特制硬质合金眼镜板、切割环寿命超长、保养方便，行业内通用的眼镜板，切割环，让科尼乐泵车用户配件更换更省心。  
Special Hardened Glass Plates and Cutting Ring have long lifetime, easy to maintain, they are easy to get from local market, which can make our CONELE Pump Truck Users' satisfied.



### 料斗 Hopper

大容量集料斗，无死角，容易清洗。吸料阻力减少20%。  
Large-capacity Collecting Hopper, no dead corner, easy to clean. The Suction Resistance is reduced by 20%.



### 遥控器（带显示屏） Remote Controller (With Display)

无线遥控装置，重量轻，携带方便；只用手柄操纵，布料杆就可准确到位。

Wireless remote control device imported from Germany can remote boom position accurately.



### 分动箱及泵组 PTO and Oil Pump

是动力切换和传动行驶及泵送操作的关键主键，采用杰牌、南华等分动箱技术及德国进口泵组。可使科尼乐泵车达到同行业泵送方量最高之一。  
It is the key part of power switch system, driving system, operating system and pumping system. We use JIE brand and NANHUA brand PTO and Germany imported Pump Unit, to make our CONELE Pump Truck become one of the highest pumping capacity in the industry.







### 电控箱

#### Electric Control Box

全进口元件的电控箱，德国IFM易福门控制器，纯总线控制。  
让科尼乐泵车控制更优，更为智能，更为节能。油耗在原泵车基础上可降20%。  
Global Purchased Electric Control Box Components, the Germany IFM controller, easy control.  
CO-NELE Truck Boom Pump has better Control, more Intelligent and more Energy-saving. Fuel Consumption can be reduced by 20%.



### 自动同步加手动两用润滑系统

#### Automatic Synchronization with Manual Dual-use Lubrication System

通过集中分配阀自动或手动加注润滑脂流入到料斗及混凝土缸需润滑的各部位。  
有效地延长了料斗及砼缸的使用寿命。  
Feed the lubrication into the hopper and concrete cylinder by the valve.  
Effectively extend the service lifetime of Hopper and Concrete Cylinder.



### 50通径大阀组

#### 50mm Diameter Large Valve

使泵车更稳定，更省油，液压系统背压更低，油温更可控，液压系统效率更高，燃油油耗更低，更省油。  
The Truck Boom Pump is more Stable and more Fuel-efficient, the Back Pressure of the Hydraulic System is Lower, the Oil Temperature is more Controllable, the Efficiency of the Hydraulic System is Higher, the Fuel Consumption is Lower, and the Fuel is more Fuel-efficient.



### 液压胶管接头

#### Hydraulic hose fittings

采用美国盖茨产品、日本东海、德国马牌胶管，确保液压系统安全，无泄漏。  
The use of American Gates Products, Japanese East Sea, and Germany Ma Rubber Hoses to ensure the Safety of the Hydraulic System, without leakage.





## 38米混凝土臂架泵车系列 38m Concrete pump truck series

### ■ 行驶状态主要参数 Main parameter while driving

| 类别<br>Class       | 项目 Item                 | 单位<br>Unit | 重汽38米 (N5G)<br>SINOTUK 38m (N5G) | 重汽38米 (C5H)<br>SINOTUK 38m (C5H) |
|-------------------|-------------------------|------------|----------------------------------|----------------------------------|
| 整车 Full equipment | 型号 Mode                 |            | KNL5232THB 38X-5RZ               | KNL5233THB 38X-5RZ               |
|                   | 生产厂家 Manufacturer       |            | 中国重汽SINOTUK                      | 中国重汽SINOTUK                      |
| 底盘<br>Chassis     | 轴距 Wheelbase            | mm         | 5200                             | 5200                             |
|                   | 型号 Mode                 |            | MC07.31-60                       | MC07.31-60                       |
| 发动机<br>Engine     | 额定功率 Rated power        | KW/(r/min) | 228/2200                         | 228/2200                         |
|                   | 排放标准 Emission standards |            | 国六 Chinese 6                     | 国六 Chinese 6                     |

### ■ 作业状态主要参数 Work parameter while driving

| 类别<br>Class                      | 项目 Item                                                 | 单位<br>Unit | 重汽38米 (N5G)<br>SINOTUK 38m (N5G)      | 重汽38米 (C5H)<br>SINOTUK 38m (C5H) |
|----------------------------------|---------------------------------------------------------|------------|---------------------------------------|----------------------------------|
| 泵送系统<br>Pumping system           | 最大理论输送量(高压/低压)<br>Max. Theor. output(high/low pressure) | m³/h       | 66/111                                | 66/111                           |
|                                  | 混凝土最大出口压力<br>Max. Theor. concrete output Pressure       | MPa        | 9.5/5.6                               | 9.5/5.6                          |
|                                  | 混凝土输送缸缸径×行程<br>Concrete cylinder dia. × stroke          | mm         | Φ230X1650                             | Φ230X1650                        |
|                                  | 上料高度 Feeding height                                     | mm         | 1400                                  | 1400                             |
| 布料杆<br>Placing boom              | 结构形式 Structure type                                     |            | 5RZ                                   | 5RZ                              |
|                                  | 布料杆可达高度/深度/半径<br>Placing boom max height/depth/radius   | m          | 38/29/34                              | 38/29/34                         |
|                                  | 回转角度 Slewing angle                                      |            | ±270°                                 | ±270°                            |
| 其它<br>Other                      | 高低压切换形式<br>High and pressure switch-over                |            | 电控自动 Electric automatic               |                                  |
|                                  | 排量控制 Displacement control                               |            | 电比例排量 Electric proportion controlling |                                  |
|                                  | 润滑方式 Lubrication mode                                   |            | 手动液压两用 Manual and hydraulic           |                                  |
| 整车参数<br>Full equipment parameter | 外形尺寸(长×宽×高) Overall dimensions                          | mm         | 10560×2550×3740                       | 10400×2550×3800                  |
|                                  | 整车质量 Total weight                                       | KG         | 23000                                 | 23000                            |

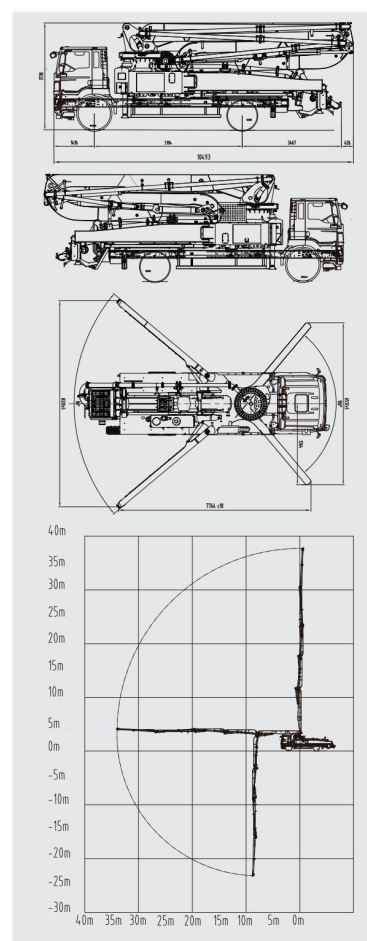




# 39米混凝土臂架泵车系列

## 39m Concrete pump truck series

| 型号 Model                                  | 单位 Unit     | KNL5235THB 39-SRZ |
|-------------------------------------------|-------------|-------------------|
| 全长 Total length                           | mm          | 10500             |
| 总宽 Total width                            | mm          | 2550              |
| 总高 Total height                           | mm          | 3740              |
| 自重 Total weight                           | kg          | 23000             |
| 臂架垂直高度 Boom vertical height               | m           | 38.1              |
| 臂架水平长度 Boom horizontal length             | m           | 35.1              |
| 臂架垂直深度 Boom vertical depth                | m           | 23.1              |
| 最小展开高度 Minimum unfolded height            | m           | 7.4               |
| 第一节臂 First boom                           | 转角 Rotation | ° 90°             |
| 第二节臂 Second boom                          | 转角 Rotation | ° 180°            |
| 第三节臂 Third boom                           | 转角 Rotation | ° 180°            |
| 第四节臂 Fourth boom                          | 转角 Rotation | ° 230°            |
| 第五节臂 Fifth boom                           | 转角 Rotation | ° 220°            |
| 转台旋转角度 Slewing frame rotation angle       | °           | ± 360°            |
| 前支腿展开宽度 Front leg spread width            | mm          | 6540              |
| 后摆腿展开宽度 Back swing leg extended width     | mm          | 8320              |
| 混凝土最大理论排量                                 | m³/h        | 110               |
| MAX. Theoretical displacement of concrete |             |                   |
| 理论最大泵送压力                                  | Mpa         | 8                 |
| MAX. Theoretical pumping pressure         |             |                   |
| 输送缸内径 Inner diameter of delivery cylinder | mm          | Φ 230             |
| 输送缸行程 Delivery cylinder stroke            | mm          | 1650              |
| 液压系统 Hydraulic pressure system            |             | 开式 Open loop      |
| 油箱容积 Hydraulic oil tank capacity          | L           | 300               |
| 水箱容积 Water tank volume                    | L           | 560               |
| 输送管径 Delivery pipeline diameter           | mm          | 125               |
| 末端软管长度 End hose length                    | mm          | 3000              |
| 末端软管管径 End hose diameter                  | mm          | 125               |
| 底盘型号 Chassis model                        |             | ZZ5237N521GF1     |
| 发动机型号 Engine model                        |             | MC07.31-60        |
| 发动机功率 Engine power                        | KW/rpm      | 228kw/2200rpm     |
| 排放标准 Emission standards                   |             | 国 VI              |
| 燃油箱容积 Fuel tank capacity                  | L           | 300               |
| 排量 Displacement                           | ml          | 6870              |
| 最大速度 Maximum speed                        | km/h        | 90                |



# 52米混凝土臂架泵车技术参数

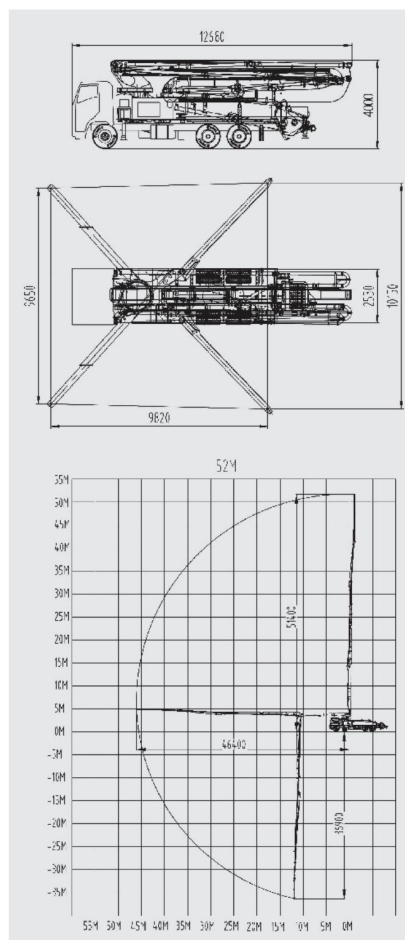
## 52m Concrete pump truck main parameter

### ■ 行驶状态主要参数 Main parameter while driving

| 类别<br>Class      | 项目<br>Item              | 单位<br>Unit | 汕德卡52米<br>SITRAK 52m |
|------------------|-------------------------|------------|----------------------|
| 整车Full equipment | 型号 Mode                 |            | KNL5352THB 52-6RZ    |
|                  | 型号 Mode                 |            | 汕德卡6×4底盘             |
| 底盘<br>Chassis    | 生产厂家Manufacturer        |            | 中国重汽                 |
|                  | 轴距 Wheelbase            | mm         | 4650+1400            |
| 发动机<br>Engine    | 型号 Mode                 |            | MC11.44-60           |
|                  | 额定功率 Rated power        | KW/(r/min) | 327KW                |
|                  | 排放标准 Emission standards |            | 国六                   |

### ■ 作业状态主要参数 Work parameter while driving

| 类别<br>Class                      | 项目<br>Item                                      | 单位<br>Unit | 汕德卡52米<br>SITRAK 52m |
|----------------------------------|-------------------------------------------------|------------|----------------------|
| 泵送系统<br>Pumping system           | 最大理论输送量<br>Max. Theor. output                   | m³/h       | 120                  |
|                                  | 混凝土最大出口压力<br>Max.Theor.concrete output Pressure | MPa        | 10MPa (超强泵送能力)       |
|                                  | 上料高度 Feeding height                             | mm         | 1480                 |
| 布料杆<br>Placing boom              | 结构形式Structure type                              |            | 52-6RZ               |
|                                  | 布料杆最大高度<br>Placing boom max height              | m          | 51.4                 |
|                                  | 布料杆最大半径<br>Placing boom max radius              | m          | 46.4                 |
|                                  | 回转角度 Slewing angle                              |            | ±360°                |
| 支腿<br>Outrigger                  | 支腿型式Outrigger type                              |            | 前X支腿+后摆腿             |
|                                  | 支腿跨距Outrigger span                              | mm         | 9650 × 10150 × 9820  |
| 整车参数<br>Full equipment parameter | 整车外形尺寸(长×宽×高)<br>Overall dimensions             | mm         | 12680 × 2550 × 4000  |
|                                  | 整车质量 Total weight                               | KG         | 实测重量35吨              |

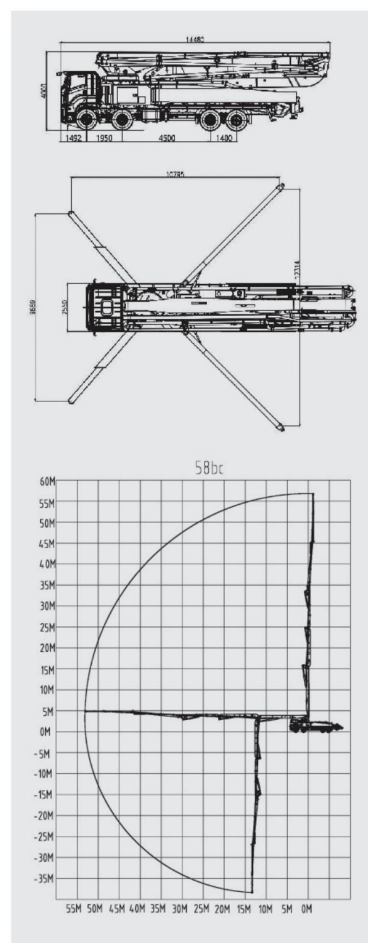




# 58米汕德卡 混凝土臂架泵车技术参数

## 58m SITRAK Concrete pump truck main parameter

| 型号 Model                                  | 单位 Unit     | KNL5442HB 58X-GRZ |
|-------------------------------------------|-------------|-------------------|
| 整车参数                                      |             |                   |
| 全长 Total length                           | mm          | 14180             |
| 总宽 Total width                            | mm          | 2550              |
| 总高 Total height                           | mm          | 4000              |
| 自重 Total weight                           | kg          | 44000             |
| 臂架垂直高度 Boom vertical height               | m           | 58                |
| 臂架水平长度 Boom horizontal length             | m           | 53                |
| 臂架垂直深度 Boom vertical depth                | m           | 45                |
| 最小展开高度 Minimum unfolded height            | m           | 13                |
| 第一节臂 First boom                           | 转角 Rotation | ° 89°             |
| 第二节臂 Second boom                          | 转角 Rotation | ° 180°            |
| 第三节臂 Third boom                           | 转角 Rotation | ° 180°            |
| 第四节臂 Fourth boom                          | 转角 Rotation | ° 240°            |
| 第五节臂 Fifth boom                           | 转角 Rotation | ° 210°            |
| 第六节臂 Sixth boom                           | 转角 Rotation | ° 110°            |
| 转台旋转角度 Slewing frame rotation angle       |             | ± 270°            |
| 前支腿展开宽度 Front leg spread width            | mm          | 9689              |
| 后摆腿展开宽度 Back swing leg extended width     | mm          | 12314             |
| 泵送系统参数                                    |             |                   |
| 混凝土理论排量                                   | m³/h        | 170               |
| 理论泵送压力                                    | Mpa         | 10                |
| 输送缸内径 Inner diameter of delivery cylinder | mm          | Φ260              |
| 输送缸行程 Delivery cylinder stroke            | mm          | 2100              |
| 液压系统 Hydraulic pressure system            |             | 开式 Open loop      |
| 油箱容积 Hydraulic oil tank capacity          | L           | 650               |
| 水箱容积 Water tank volume                    | L           | 1000              |
| 输送管径 Delivery pipeline diameter           | mm          | 125               |
| 末端软管长度 End hose length                    | mm          | 3000              |
| 末端软管管径 End hose diameter                  | mm          | 125               |
| 底盘参数                                      |             |                   |
| 底盘型号 Chassis model                        |             | ZZ5446V516MF1     |
| 发动机型号 Engine model                        |             | MC11.44-60        |
| 发动机功率 Engine power                        | KW/rpm      | 327/1900          |
| 排放标准 Emission Standards                   |             | 国六 National6      |
| 燃料箱容积 Fuel tank capacity                  | L           | 400               |
| 排量 Displacement                           | ml          | 10518             |
| 最大速度 Maximum speed                        | km/h        | 90                |



## 60/63米汕德卡混凝土臂架泵车技术参数 60/63m SITRAK Concrete pump truck main parameter

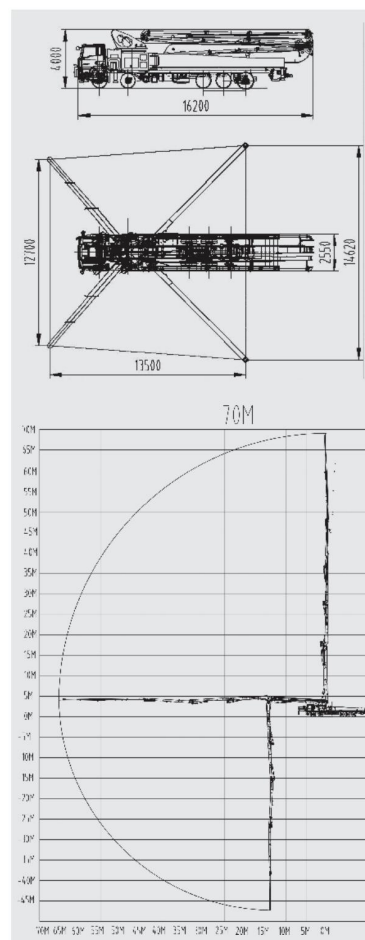
| 型号 Model                                        | 单位 Unit                  | KNL5442-60X-6RZ | KNL5442THB 63X-6RZ |
|-------------------------------------------------|--------------------------|-----------------|--------------------|
| 整车参数<br>Vehicle Specifications                  |                          |                 |                    |
| 全长 Total length                                 | mm                       | 14530           | 15020              |
| 总宽 Total width                                  | mm                       | 2550            | 2550               |
| 总高 Total height                                 | mm                       | 4000            | 4000               |
| 自重 Total weight                                 | kg                       | 44000           | 44000              |
| 臂架垂直高度 Boom vertical height                     | m                        | 60              | 63                 |
| 臂架水平长度 Boom horizontal length                   | m                        | 55.1            | 58                 |
| 臂架垂直深度 Boom vertical depth                      | m                        | 44              | 49                 |
| 最小展开高度 Minimum unfolded height                  | m                        | 15              | 15                 |
| 第一节臂 First boom                                 | 转角 Rotation              | ° 89°           | ° 89°              |
| 第二节臂 Second boom                                | 转角 Rotation              | ° 180°          | ° 180°             |
| 第三节臂 Third boom                                 | 转角 Rotation              | ° 180°          | ° 180°             |
| 第四节臂 Fourth boom                                | 转角 Rotation              | ° 230°          | ° 240°             |
| 第五节臂 Fifth boom                                 | 转角 Rotation              | ° 210°          | ° 210°             |
| 第六节臂 Sixth boom                                 | 转角 Rotation              | ° 110°          | ° 110°             |
| 转台旋转角度 Slewing frame rotation angle             | °                        | ± 360°          | ± 360°             |
| 前支腿展开宽度 Front leg spread width                  | mm                       | 9793            | 12800              |
| 后摆腿展开宽度 Back swing leg extended width           | mm                       | 13279           | 12600              |
| 泵送系统参数<br>Pumping system parameters             |                          |                 |                    |
| 混凝土理论排量<br>Theoretical displacement of concrete | 高压 High pressure<br>m³/h | 170             | 170                |
| 理论泵送压力<br>Theoretical pumping pressure          | 高压 High pressure<br>Mpa  | 10              | 10                 |
| 输送缸内径 Inner diameter of delivery cylinder       | mm                       | Φ 260           | Φ 260              |
| 输送缸行程 Delivery cylinder stroke                  | mm                       | 2100            | 2100               |
| 液压系统 Hydraulic pressure system                  | 开式 Open loop             | 开式 Open loop    | 开式 Open loop       |
| 油箱容积 Hydraulic oil tank capacity                | L                        | 700             | 700                |
| 水箱容积 Water tank volume                          | L                        | 1000            | 1000               |
| 输送管径 Delivery pipeline diameter                 | mm                       | 125             | 125                |
| 末端软管长度 End hose length                          | mm                       | 3000            | 3000               |
| 末端软管管径 End hose diameter                        | mm                       | 125             | 125                |
| 底盘型号 Chassis model                              |                          | ZZ5446V516MF1   | ZZ5446V516MF1      |
| 发动机型号 Engine model                              |                          | MC11.44-60      | MC11.44-60         |
| 发动机功率 Engine power                              | KW/rpm                   | 327/1900        | 327/1900           |
| 排放标准 Emission standards                         |                          | 国 VI            | 国六 National 6      |
| 燃油箱容积 Fuel tank capacity                        | L                        | 400             | 400                |
| 排量 Displacement                                 | ml                       | 10518           | 10518              |
| 最大速度 Maximum speed                              | km/h                     | 90              | 90                 |
| 底盘参数<br>Truck chassis parameters                |                          |                 |                    |





## 70米汕德卡 混凝土臂架泵车技术参数 70m SITRAK Concrete pump truck main parameter

| 型号 Model                                  | 单位 Unit     | KNL5540THB 70-6RZR |
|-------------------------------------------|-------------|--------------------|
| 整车参数                                      |             |                    |
| 全长 Total length                           | mm          | 16230              |
| 总宽 Total width                            | mm          | 2550               |
| 总高 Total height                           | mm          | 4000               |
| 自重 Total weight                           | kg          | 54000              |
| 臂架垂直高度 Boom vertical height               | m           | 70                 |
| 臂架水平长度 Boom horizontal length             | m           | 64                 |
| 臂架垂直深度 Boom vertical depth                | m           | 52                 |
| 最小展开高度 Minimum unfolded height            | m           | 10                 |
| 第一节臂 First boom                           | 转角 Rotation | ° 89°              |
| 第二节臂 Second boom                          | 转角 Rotation | ° 180°             |
| 第三节臂 Third boom                           | 转角 Rotation | ° 180°             |
| 第四节臂 Fourth boom                          | 转角 Rotation | ° 240°             |
| 第五节臂 Fifth boom                           | 转角 Rotation | ° 210°             |
| 第六节臂 Sixth boom                           | 转角 Rotation | ° 110°             |
| 转台旋转角度 Slewing frame rotation angle       |             | ± 360°             |
| 前支腿展开宽度 Front leg spread width            | mm          | 12700              |
| 后摆腿展开宽度 Back swing leg extended width     | mm          | 14620              |
| 混凝土理论排量                                   | m³/h        | 160                |
| 理论泵送压力                                    | Mpa         | 10                 |
| 输送缸内径 Inner diameter of delivery cylinder | mm          | Φ260               |
| 输送缸行程 Delivery cylinder stroke            | mm          | 2100               |
| 液压系统 Hydraulic pressure system            |             | 开式 Open loop       |
| 油箱容积 Hydraulic oil tank capacity          | L           | 800                |
| 水箱容积 Water tank volume                    | L           | 1000               |
| 输送管径 Delivery pipeline diameter           | mm          | 125                |
| 末端软管长度 End hose length                    | mm          | 3000               |
| 末端软管管径 End hose diameter                  | mm          | 125                |
| 底盘型号 Chassis model                        |             | ZZ5546V52KMF1B     |
| 发动机型号 Engine model                        |             | MC13.54-61         |
| 发动机功率 Engine power                        | KW/rpm      | 400/1800           |
| 排放标准 Emission Standards                   |             | 国六 National6       |
| 燃料箱容积 Fuel tank capacity                  | L           | 400                |
| 排量 Displacement                           | ml          | 12420              |
| 最大速度 Maximum speed                        | km/h        | 90                 |





# 案例 case

