

## Product Overview



### EXCAVATOR SD30U

This 30U small excavator is an efficiency type model, the system is mature and stable, and the leather is resistant to construction. It is widely used in orchard nursery, landscaping, mountain reclamation, farmland reconstruction, indoor demolition and other operations.

Powerful factory, ex-factory price, sincerely looking for agents.

## Product Overview



This SD30U small excavator weighs about 3000kg ➤

relatively small and flexible ➤

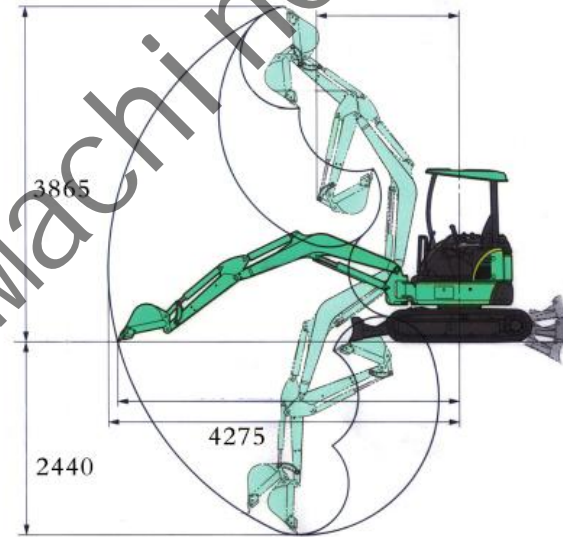
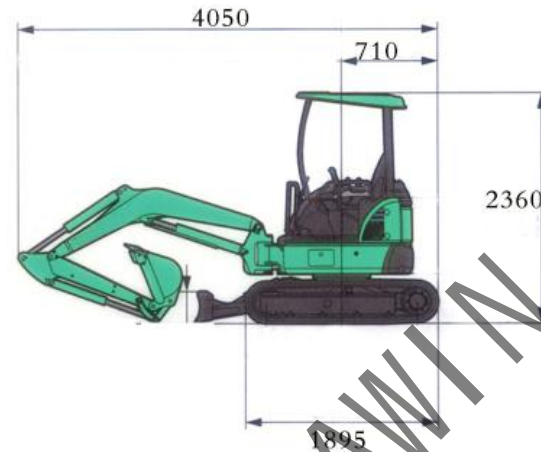
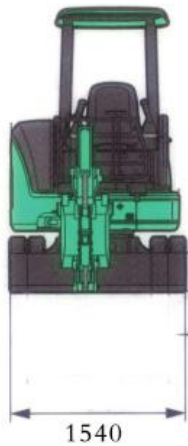
Yanmar Euro 5 (EPA) ,Engine power 15.2KW ➤

bucket capacity 0.075m<sup>3</sup> ➤



Powerful factory, ex-factory price, sincerely looking for agents.

# Technical Specifications



1. Overall Width: 1540mm
2. Overall Length: 4050mm
3. Max. Digging Height: 3865mm
4. Max Digging Depth: 2560mm
5. Boom Length: 2150mm
6. Track Length: 1895mm
7. Max Dumping Height: 2760mm
8. Max. Digging distance: 4375mm

Powerful factory, ex-factory price, sincerely looking for agents.

## Details Display



New design of appearance  
It's made of die-formed covering parts by stamping, with beautiful appearance and high grade

Tailless models, small radius of rotation, more flexible



Enhanced bulldozer to improve efficiency

Lengthened large arm, digging deep, far enough, lift high, the general loading requirements can be met.

Powerful factory, ex-factory price, sincerely looking for agents.





## Details Display



Open hood  
(make daily routine inspection and maintenance work faster and more efficient)

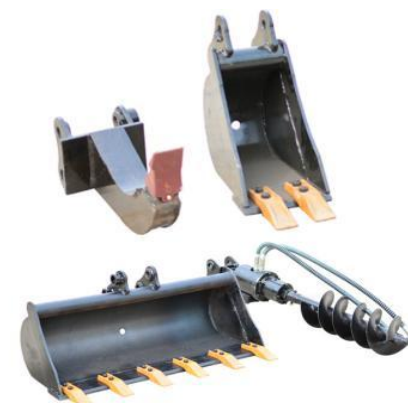


Design of reinforced boom, arm, bucket and chassis  
Improve structure, disperse stress, improve stability and durability of structure



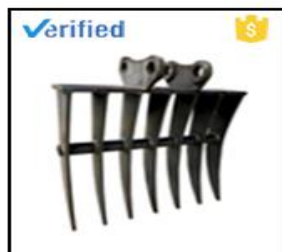
Assembly of environmentally friendly engines  
Fuel saving, silent, green emission and strong power of the engine, to meet the T3 emission

Can be matched with a variety of front-end furniture, suitable for a variety of different working conditions.



Powerful factory, ex-factory price, sincerely looking for agents.

# Accessories supply



Rake



Gripper



Mechanical claw



Ripper



Breaking hammer



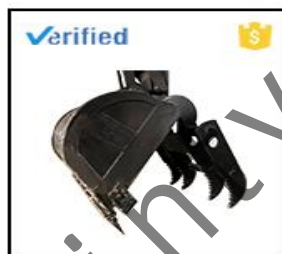
Auger



Buckets



Quick connector



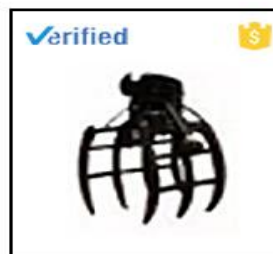
Thumb



Plum paw



Rammer







Hydraulic claw




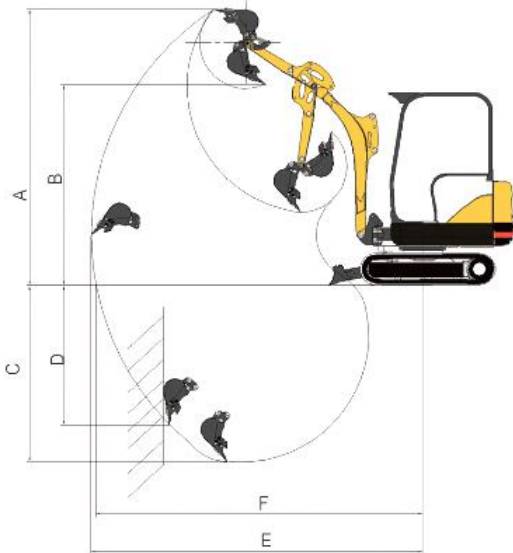
Powerful factory, ex-factory price, sincerely looking for agents.

# Technical Specifications



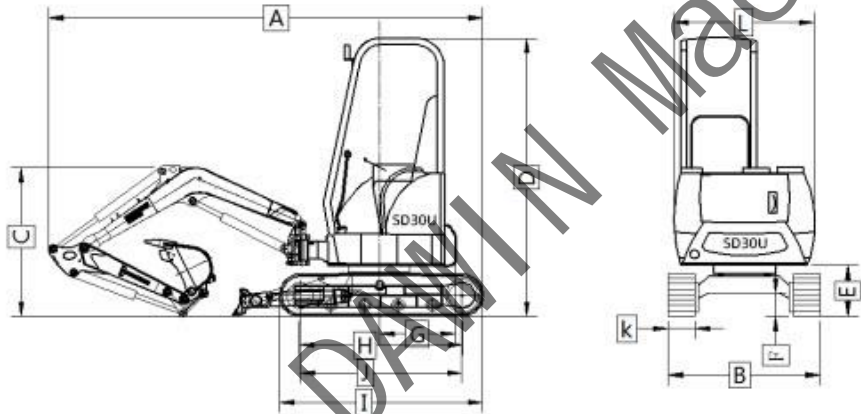
 <b>Engine</b>		 <b>Travel System</b>	
Model	Perkins 403D-11/403J-11 EPA	Travel motors	LTM03CJ Plunger double speed
Type	Water cooling, natural inhalation	Support roller quantities	2×3
		Carrier roller quantities	2×1
No. of cylinder	3	Travel shoes	No
Bore and stroke	80x84(mm)	Travel speed	High speed : 4.3km/h, Low speed: 2.3km/h,
Displacement	1.267L	Drawbar pulling force	14.2kN
Power output	15.2kw/2200rpm	Gradeability	58%(30°)
Max. torque	63-67.3N.m/1800rpm	Track shoes thickness	Rubber track 65mm, Steel track: 72mm
 <b>Hydraulic System</b>		 <b>Cab &amp; Electrical System</b>	
Pump	TAIFENG Plunger pump	Cab	Sunroof
Type	Load sensitive		
Max. discharge flow	62 (L/min)		
Max. discharge pressure			
Boom, arm and bucket	21 MPa	Voltage	12V
Travel circuit	12 V	Batteries	1X12V
Swing circuit	12V	Battery capacity	45Ah
Control circuit	12V	Outer diameter, inner diameter, piston rod diameter	
Pilot control pump	4 MPA	Boom cylinder	Φ90xΦ75xΦ40*S455-L785
Main control valves	21 Mpa	Arm cylinder	Φ85xΦ70xΦ40*S492-L765

Powerful factory, ex-factory price, sincerely looking for agents.

Oil cooler	Air cooled type	Bucket cylinder	Φ75xΦ50xΦ35*S426-L670
 <b>Swing System</b>		 <b>Refilling Capacity &amp; lubrication</b>	
Swing motor	NACHI PCR-2B-10A-P-8486A	Fuel tank	32L
Swing motor type	Hydraulic driven gear rotary motor	Cooling system	9L
Brake	No	Engine oil	3.4-4.4L
Swing speed	13.5 r/min	Hydraulic oil tank	39.5L
 <b>Bucket</b>			
Type		Backhoe bucket	
Bucket capacity		0.075m3 (SAE)	
Bucket Capacity scope		0.030-0.1m³	
Number of bucket teeth		4	
Bucket width		460 mm	
<b>Working ranges</b>			
<b>Boom length</b>		2150mm	
A	Max. digging height	3865mm	
B	Max. dumping height	2760mm	
C	Max. digging depth	2560mm	
D	Max. vertical digging depth	2440mm	
E	Max. digging distance	4375mm	
F	Max. digging radius at ground level	4275mm	
<b>Digging Force</b>			
<b>Arm length</b>		1388mm	
A	Bucket digging force	18.6 KN	
			

Powerful factory, ex-factory price, sincerely looking for agents.



B	Arm digging force	13.5 KN			
Overall Dimensions					
A	Overall length	4050mm	G	Tail swing radius	710mm
B	Overall width	1540mm	H	Track grounding length	1530mm
C	Overall height(to top of boom)	1380mm	I	Track length	1895mm
D	Overall height(to top of cab)	2360mm	J	Track gauge	1510mm
E	Counter weight ground clearance	485mm	K	Track Shoe width	250mm
F	Min. Ground clearance	255mm	L	Revolving frame width	1350mm
<div></div>					
Operating weight includes basic machine					
Operating weight			2870kg		
Ground pressure			26.7 KPa		

Powerful factory, ex-factory price, sincerely looking for agents.