

Product Overview



EXCAVATOR SD65E

SD65E small crawler excavator is one of the earliest models studied in our factory. The system is mature and stable, the excavation is powerful and the failure rate is low.

Powerful factory, ex-factory price, sincerely looking for agents.

Product Overview



This SD65E small excavator weighs about 6000kg ➤

relatively small and flexible ➤

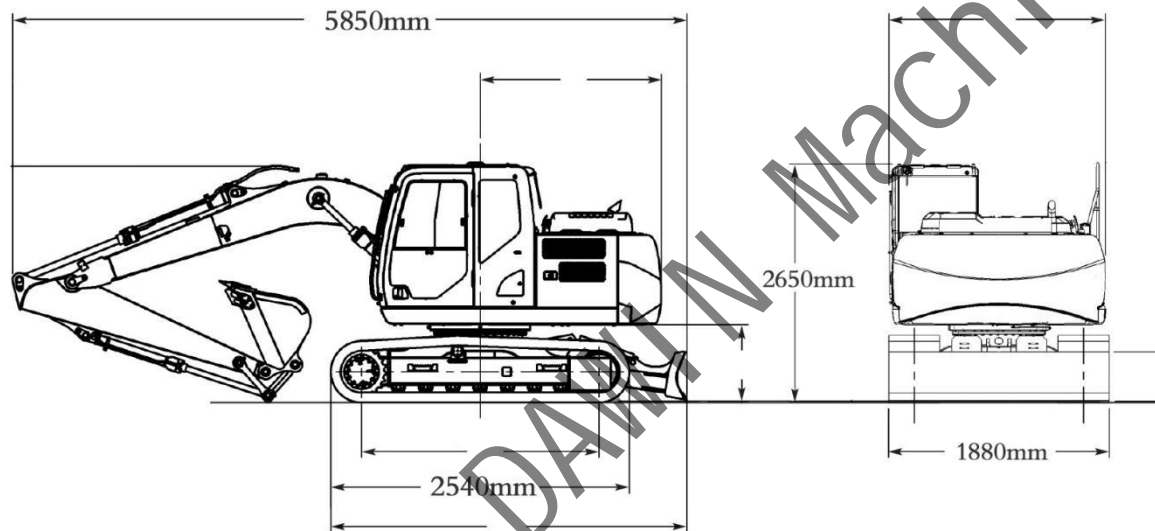
Yanmar4TNV494,Engine power 37KW ➤

bucket capacity 0.28m³ ➤



Powerful factory, ex-factory price, sincerely looking for agents.

Technical Specifications



1. Overall Width: 1880mm
2. Overall Length: 5850mm
3. Max. Digging Height: 5760mm
4. Max Digging Depth: 3820mm
5. Boom Length: 3000mm
6. Track Length: 2540mm
7. Max Dumping Height: 4030mm
8. Max. Digging Radius: 6150mm

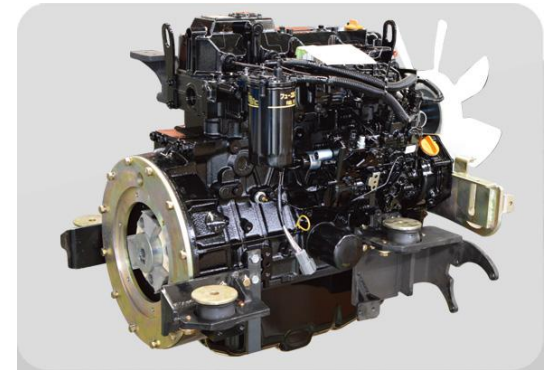
Powerful factory, ex-factory price, sincerely looking for agents.

Details Display



New design of appearance
It's made of die-formed covering parts by stamping, with beautiful appearance and high grade.

Assembly of environmentally friendly engines
Fuel saving, silent, green emission and strong power of the engine, meet the T3 emission standard



Optimize the reinforced chassis to increase the stability of the lower body

Walking motor, increase I speed torque, lift. High II speed walking speed, greatly improved. Increase productivity.



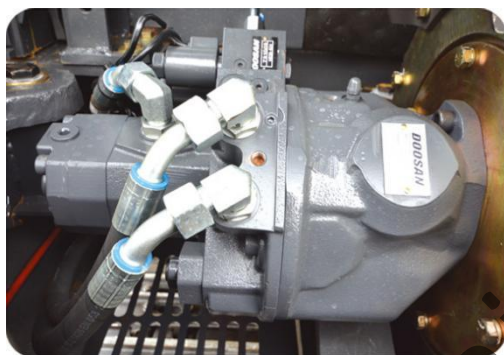
Powerful factory, ex-factory price, sincerely looking for agents.

Details Display



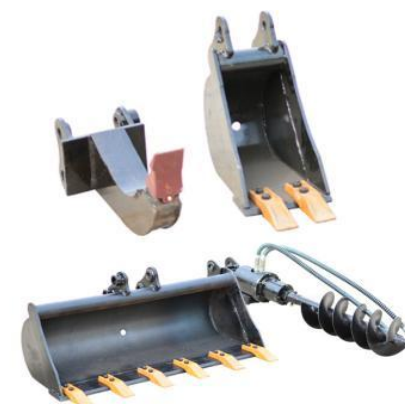
Comfortable cab: brand seat, the cab conforms to ergonomics, which can alleviate the fatigue of long-term operation.

Open machine cover, convenient late maintenance and repair



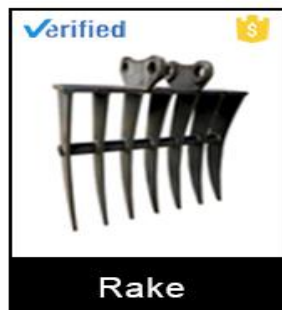
South Korean main pump, large displacement, high power, low fuel consumption, the overall performance and engine power match.

Can be matched with a variety of front-end furniture, suitable for a variety of different working conditions.



Powerful factory, ex-factory price, sincerely looking for agents.

Accessories supply



Rake



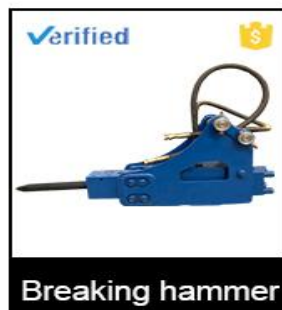
Gripper



Mechanical claw



Ripper



Breaking hammer



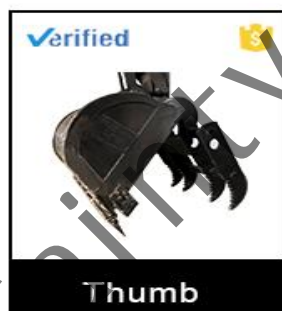
Auger



Buckets



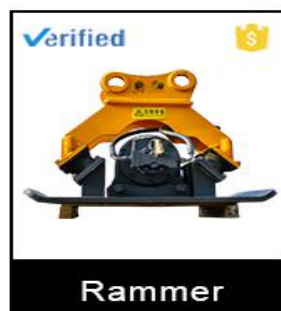
Quick connector



Thumb



Plum paw



Rammer



Hydraulic claw

Powerful factory, ex-factory price, sincerely looking for agents.

Technical Specifications



Overall size		Machine parameters	
Min. Radius of Rear Gyration	1650mm	Machine Weight	5880Kg
Min Ground Clearance	350mm	Bucket Capacity	0.28m ³
Platform width	1810mm	Rated Power	37KW
Engine hood height	1750mm	Cylinders	4
Platform Height Above Ground	830mm	Hydraulic Pressure	24MPa
Transport Length	5850mm	Max Grade	30°
Arm Length	1600mm	Ground Pressure	35kpa
Boom Length	3000mm	Max Travel Speed	2.5-4.5Km/h
Bucket Width	670mm	Max Traction	38KN
Working range		Platform rotation speed	8-10rpm
Max. Digging Height	5760mm	Max Bucket Digging Force	37.7KN
Max. Dumping Height	4030mm	Max Arm Digging Force	28.4KN
Max. Digging Depth	3820mm	Machine configure	
Max Digging Radius	6150mm	Model No	SD65E
Min Radius of Rotation	2100mm	Engine Model	Yanmar4TNV494
Max. Lifting Height of Bulldozer	350mm	Pump	Imported MZFB327
Max. Sinking Depth of Bulldozer	450mm	Valve	Parker-Korea
As the technology is constantly updated, materials and technical specifications are subject to change without notice.		Spray method	Direct injection
		Cylinders	4
		Motors	Imported Eaton

Powerful factory, ex-factory price, sincerely looking for agents.