

## Product Overview



### EXCAVATOR SD13D

This product is widely used in the construction of small spaces such as vegetable greenhouses, orchard nurseries, farmland leveling, and digging ditches. It is the preferred tool to replace labor.

Powerful factory, ex-factory price, sincerely looking for agents.

## Product Overview



This SD13D small excavator weighs about 1013/1035kg ➤

relatively small and flexible ➤

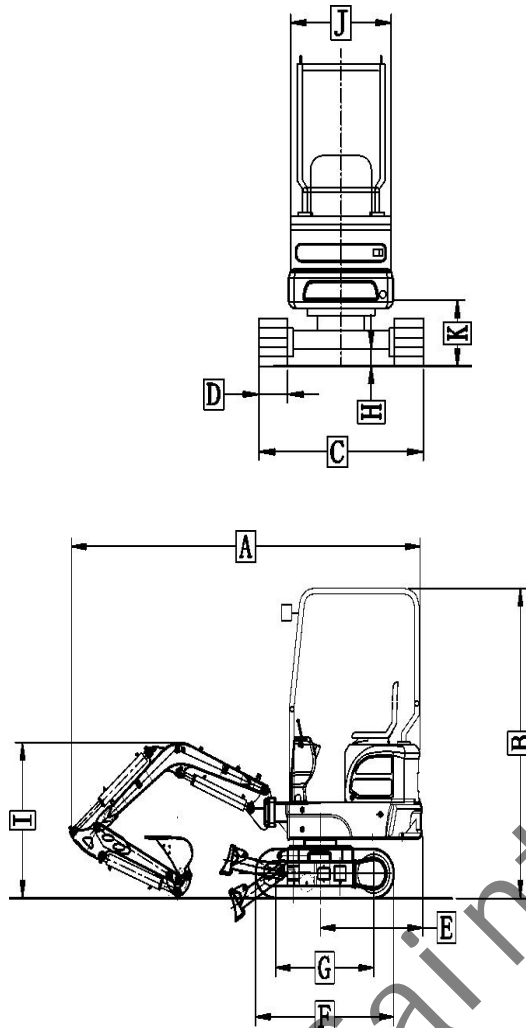
(KP), 192F/ Kubota, D722-EF11 ,Engine power 7.6kw,10.2 kw KW ➤

bucket capacity 0.025 m ➤



Powerful factory, ex-factory price, sincerely looking for agents.

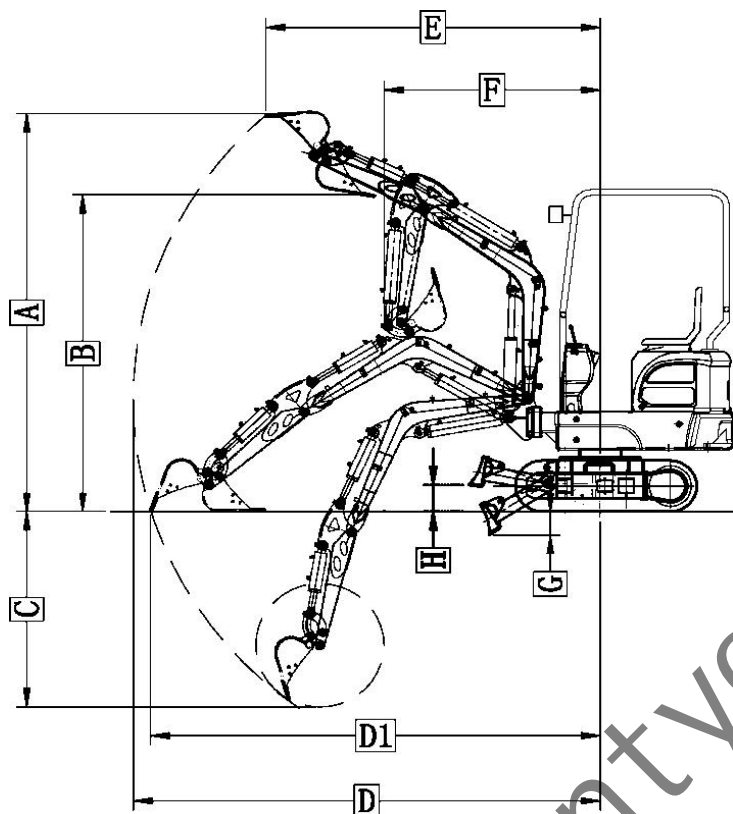
# Technical Specifications



**SD13D hydraulic excavator size parameters**

Codename	Code item	Code size
A	Total length	2780mm
B	Total height	2150mm
C	Overall width	930mm
D	Track width	180mm
E	Platform turning radius	883mm
F	Track length	1195mm
G	Wheelbase	845mm
H	Ground clearance	150mm
I	Total boom height	1107mm
J	Platform width	800mm
K	Platform height from the ground	430mm

Powerful factory, ex-factory price, sincerely looking for agents.



### SD13D hydraulic excavator operating range

Codename	Code item	Code size
A	Maximum digging height	2637mm, (2930nm使用推土板)
B	Maximum unloading height	2170mm
C	Maximum vertical digging depth	1336mm, ( 1552nm使用推土板)
D	Maximum digging radius	3072mm
D1	Maximum ground level digging distance	3300mm
E	Digging radius of maximum digging height	2200mm
F	Minimum radius of gyration	1425mm
G	The maximum depth of the bulldozing board from the ground	170mm
H	The maximum height of the bulldozing board from the ground	185mm

Powerful factory, ex-factory price, sincerely looking for agents.

## Details Display



### Reinforced arm design

Improve structure, disperse stress, improve stability and durability of structure



Add cylinder guard plate and bottom protection device , pipeline hidden type design.  
Prevent scratches and damage in all parts.



Add hydraulic oil radiator and respirator ,  
powerful cooling fan , etc  
Relieve the high temperature phenomenon  
and works continuously

Enhanced car frame (chassis and platform )  
Large shelf wider and thicker , several  
centimeters thicker than the old model , the  
whole vehicle is stable and powerful

Powerful factory, ex-factory price, sincerely looking for agents.





## Details Display



### New design

Die cover stamping, beautiful upper grade

Reinforced rubber track durable



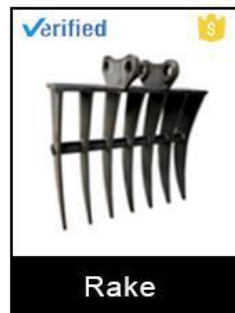
Handle and control list, easy to learn

Can be matched with a variety of front-end furniture, suitable for a variety of different working conditions.



Powerful factory, ex-factory price, sincerely looking for agents.

## Accessories supply



Rake



Gripper



Mechanical claw



Ripper



Breaking hammer



Auger



Buckets



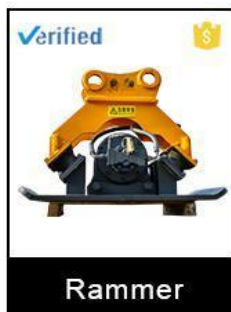
Quick connector



Thumb



Plum paw



Rammer



Hydraulic claw

Powerful factory, ex-factory price, sincerely looking for agents.

# Technical Specifications

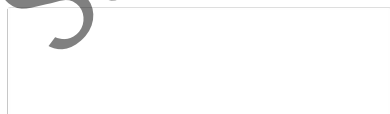


SD13D hydraulic excavator size parameters	
Code item	Code size
Total length	2780mm
Total height	2150mm
Overall width	930mm
Track width	180mm
Platform turning radius	883mm
Track length	1195mm
Wheelbase	845mm
Ground clearance	150mm
Total boom height	1107mm
Platform width	800mm
Platform height from the ground	430mm
SD13D hydraulic excavator operating range	
Code item	Code size
Maximum digging height	2637mm, (2930nm使用推土板)
Maximum unloading height	2170mm
Maximum vertical digging depth	1336nnn, ( 1552nm使用推土板)
Maximum digging radius	3072mm

Powerful factory, ex-factory price, sincerely looking for agents.



Maximum ground level digging distance	3300mm
Digging radius of maximum digging height	2200mm
Minimum radius of gyration	1425mm
The maximum depth of the bulldozing board from the ground	170mm
The maximum height of the bulldozing board from the ground	185mm
<b>SD13D hydraulic excavator performance parameters</b>	
Project name	SD13D hydraulic excavator performance parameters
Engine model	KOOP 192F (air-cooled diesel engine)Kubota, D722-EF11 crude oil engine)
Power	7.6kw/3000rpm;10.2kw/2500rpm
Work pressure	16 MPAA
Maximum digging force of bucket	6.5 KN
Gradeability	25°
Ground pressure	35Kpa
Walking speed	2.1km/h
Main pump flow	21.6 (L/Min)/25 (L/Min)
Platform rotation speed	13rpm/Min
Bucket capacity	0.025 m³
Boom swing angle	左 42° , 右 62°
Overall quality	1300kg



Powerful factory, ex-factory price, sincerely looking for agents.