



青岛晟源达威机械有限公司

QINGDAO SAINTYOL DAWIN MACHINERY CO.,LTD

地址：青岛市城阳区玉皇岭工业园

ADD : Western Top of Tieqishan Rd.Yuhuangling Industrial Park,
Xiazhuang, Chengyang District, Qingdao, China.

Tel: +86 532 8965 9612
+86 186 6979 8625

E-mail: info@dawinmachinery.com

www.dawinmachinery.com

注：青岛达威重工遵循不断完善产品性能原则，对产品部分改正或许可以及时通知阁下，本图册最终解释权归青岛达威重工有限公司所有。
Qingdao Dawin heavy industry adhere to the principle of constantly improve product performance, the product correct part
may not inform you in time, to the interpretation of this illustrated manual owned by Qingdao Dawin heavy industry Co., Ltd.



青岛晟源达威机械有限公司

QINGDAO SAINTYOL DAWIN MACHINERY CO.,LTD

泵送设备制造专家

PUMPING EQUIPMENT MANUFACTURING EXPERT



· 品质创新未来 ·

Quality of innovation in the future



目录 Contents

关于我们 About us	1
混凝土湿喷台车 Shotcreting spraying car	7
车载式双喷头湿喷机 Vehicular double nozzle wet spraying machine	11
混凝土湿喷机 Concrete wet spraying machine	13
HBT系列混凝土泵 HBT series concrete pump	15
XBS系列混凝土泵 XBS series concrete pump	17
耐火材料专用高压泵 Ultra-high pressure spray pump	21
搅拌拖泵 Drag the mixing pump	23
轻质土（发泡混凝土）制备设备 Light soil (foam concrete) preparation equipment	25
水泥发泡机 Cement foaming machine	27
矿用泵 Mine pump	28
矿用混凝土湿喷机 Mine concrete wet spraying machine	29
污泥、煤泥泵 Sludge, coal slurry pump	31
喷浆机 Shotcrete machine	33
服务承诺 Service commitment	35

关于我们 About Us



青岛晟源达威机械有限公司是集科研、生产、销售及售后服务于一体的专业研制大型建设工程机械设备的公司。公司以“以人为本、科技兴企”，广招高水平科技人才，积极引进国内外先进技术，建立并通过了ISO9001国际质量体系认证，二〇〇二年度被评为AAA级诚信企业，HBT混凝土输送泵被中国质量检验协会授予“2001年国家质量检测合格—质检合格好产品”称号。

晟源达威机械源于德国的先进、严谨的技术理念，使我们时刻关注国内外业界的技术动向并掌握和剖析同行业产品的优缺点，在新研发过程中，精益求精，力求产品完美。

目前，达威机械产品遍布全国各省、市，并远销俄罗斯、哈萨克斯坦、菲律宾、蒙古、埃及、印度、巴基斯坦、马来西亚、尼泊尔、亚美尼亚、越南、伊朗、澳大利亚、罗马尼亚等国家，晟源达威的产品正以其优异的性能服务于全世界。

Qingdao Saintyol Dawin Machinery Co., Ltd. specializes in the manufacture of large-scale construction machinery. We combined the technical research, producing, sales and after-sales service together. Our company is people-oriented, considers science and technology as the basis of its prosperity, invites talents widely, introduces advanced technology from home and abroad.

Qingdao Saintyol Dawin Machinery Co., Ltd. originates from German advanced and strict technical philosophy. We pay close attention to the technology tendency of our industry at home and abroad. Meanwhile we grasp and analyse the advantages of products in our industry. In the process of research and development, we absorb the essence and keep perfecting our products.

At present, Qingdao Saintyol Dawin Machinery Co., Ltd. could be found all over China and have been exported to Russia, Kazakhstan, Iran, Mongolia, Philippines, Singapore, Malaysia, Vietnam, Indonesia, Australia, Romania, Armenia, Egypt, Niger, Congo, Mauritius and other countries. The products of Qingdao Saintyol Dawin Machinery Co., Ltd. are serving clients world-widely with superior performance.

青岛晟源达威机械秉承“拼搏进取，追求卓越”的企业精神，技术不断改革创新，产品不断升级换代，致力于打造国内领先，国际一流的建机品牌。

Qingdao Saintyol Dawin Machinery Co., Ltd. inherit “enterprising and pursuing excellence” enterprise spirit, reform and innovate technology constantly, upgrade products to create domestic leading and international first class construction machinery brand.

企业文化

Corporate Culture

企业使命

Corporate Commission

为客户提供更好的产品 To provide better products for our customer

为员工创造更多的福祉 To create more benefits for our employees

为社会承担更多的责任 To share more responsibility for our society

经营理念

Operation Principle

客户第一—以质求存 Customer is Foremost, and Good quality is the key to survive.

企业精神

Corporate Spirit

拼搏进取追求卓越 Enterprise and pursue excellence

企业价值观

Corporate Values

尊重个人 注重团队 Respect for the individual; focus on team spirit; orient people; innovate technology
以人为本 科技创新

工作作风

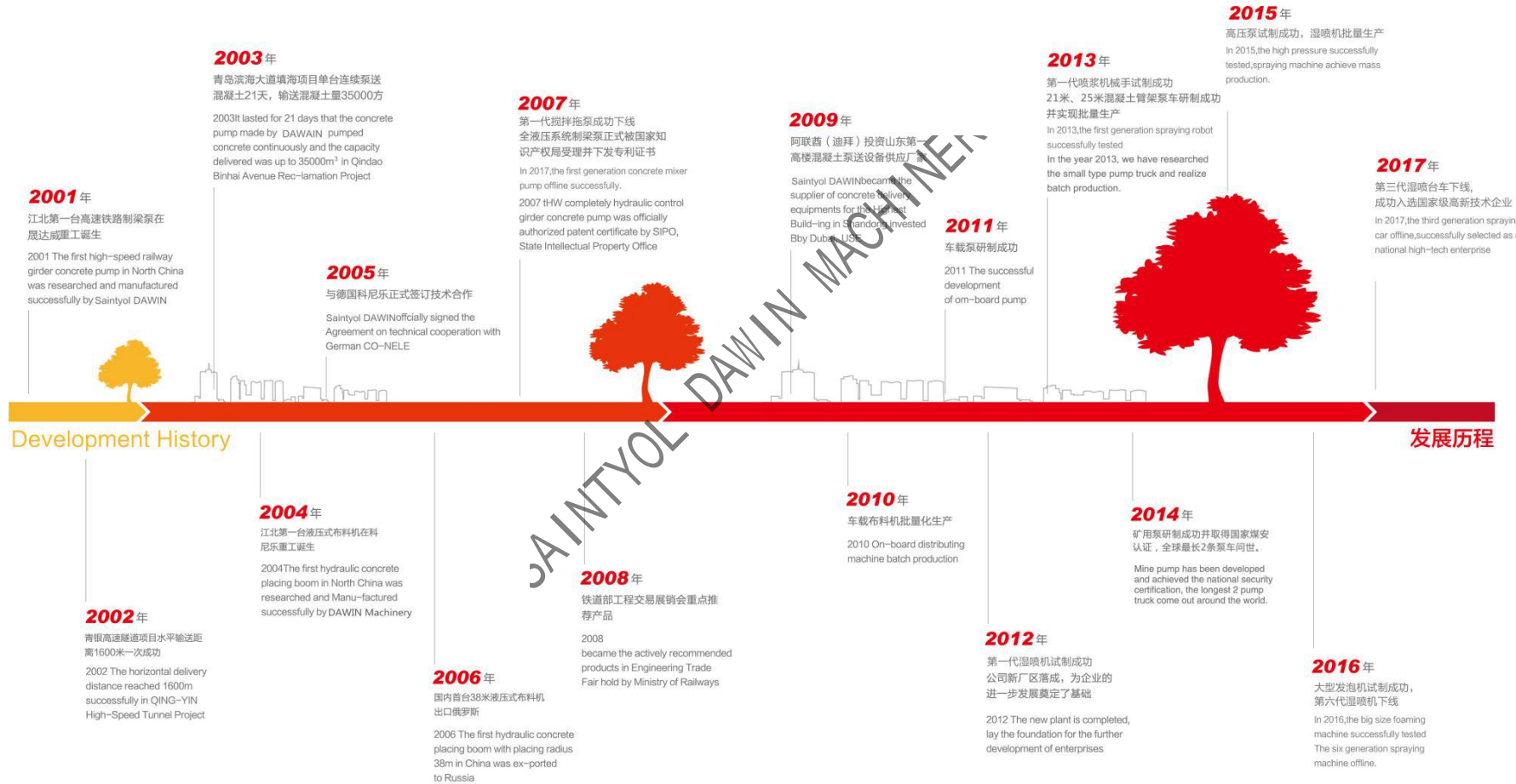
Work Style

精益求精 务实创新 Keep improving, seek practical results and innovation

企业理论

Enterprise Ethics

先做人 后做事 Be a good man before you do something.
滴水之恩当涌泉相报 A drop of water's favor today will be rewarded with A fountain of water tomorrow



SISOUL中青林集团

(旗下分28家分公司 Subsidiaries)

青岛晟源达威机械有限公司
Qingdao Saintyol DAWIN Machinery Co.,Ltd.

青岛科尼乐集团有限公司
Qingdao Co-nele Group Co.,Ltd

青岛辉特搅拌站机械设备有限公司
Qingdao Huite Mixing Station Machinery And Equipment Co.,Ltd

青岛新型建设机械有限公司
Qingdao Xinxing Construction Machinery Co.,Ltd

青岛新型预拌砂浆事业部
Qingdao Xinxing Ready-mixed Mortar Division

广西中特科技有限公司
Guangxi Zhongte Technology Co., Ltd

陕西中青林重工有限公司
Shanxi SISOUL Industrial Co.,Ltd

青岛大森经贸有限公司
Qingdao Dasen Trading Co.,Ltd





混凝土湿喷台车技术参数

Shotcreting spraying car technical parameters

	项目Item	单位Unit	KNL5160TPJ-25	KNL5160TPJ-30A
整机参数	臂架结构形式 Boom structure	—	大臂小臂俯仰, 小臂伸缩 Big and small arm Pitching and extend with stretching	大臂小臂俯仰, 小臂伸缩, 飞臂水平摆动 Big and small arm Pitching and extend with stretching, Fly arm
	喷射高度 Spraying height	m	16	16
	喷射宽度 Spraying width	m	26.8	26.8
	大臂俯仰角 Big arm pitching angle	°	0~60°	0~60°
	小臂俯仰角 Small arm pitching angle	°	+15° ~-35°	+15° ~-35°
	臂架回转角度 Boom rotation angle	°	± 300°	± 300°
	飞臂水平摆动角 Flying arm horizontal swing angle	°	—	± 45°
	喷头轴向旋转角 Spindle axial rotation angle	°	360°	360°
	喷头垂直轴向摆动角 Spindle vertical axial swing angle	°	240°	240°
	喷头摆动角度 Nozzle swing angle	°	± 4°	± 4°
系统参数	主驱动方式 Main drive mode	—	电动机 motor	电动机
	辅助驱动方式 Auxiliary drive mode	—	柴油发动机 Diesel engine	柴油发动机 Diesel engine
	电动机额定功率 Motor rated power	kw	55	55
	工作电压 Voltage	v	380	380
	混凝土排量 Concrete spraying capacity	m³/h	25	30
底盘参数	泵送出口压力 Pumping pressure	Mpa	8	10
	混凝土缸内径行程 Concrete cylinder	mm	Φ 160X1000	Φ 160 X1000
	输送管径 Cylinder dia.*stick dia.*stroke	mm	φ 80	φ 80
	底盘型号 Chassis model	—	CDW1160HA1R5	CDW1160HA1R5
	轴距 Wheel base	mm	5000	5000
底盘参数	发动机型号 Engine model	—	YC4EG185-50	YC4EG185-50
	发动机最大功率 Engine max power	kW	136 (185马力) (186hp)	136 (185马力)
	变速箱档位 Gearbox file	—	8挡 (带高低速)	8挡 (带高低速)
	尾气排放标准 Exhaust emission	—	国V Nation V	国V Nation V
	整车外形尺寸 (长×宽×高) The whole	mm	9200x2460x3670	9200x2460x3670

技术特点 Technical features

前后支腿跨距大, 作业稳定性好。

Front and rear leg the span is large, work stability.

前支腿采用水平伸缩油缸+H型支腿, 支腿跨距大, 后支腿采用外八字封闭包腿, 受力好, 稳定性好, 可有效支撑后部料斗泵送砼缸的冲击载荷。The front leg adopts horizontal telescopic cylinder + H-type legs, legs span is large. The rear leg adopts eight characters closed type leg, forcing ability is good, more stability, can effectively support the rear hopper pumping concrete cylinder loading impact.



泵送系统 Pumping system

泵送液压系统采用55KW四极电动机130ml/r可调排量主泵+ 45ml/r变量泵 (力士乐系列); 主阀采用德国进口八联电比例阀 (BARMAG巴玛格), 该电比例阀具有定变量切换功能。

Pumping hydraulic system adopts 55KW four-pole motor 130ml/r adjustable displacement main pump+ 45ml/r variable pump (Rexroth series). The main valve adopts imported eight proportional valve (BARMAG) from German, The electric proportional valve has the fixed-variable switching function.



臂架采用对称布置结构

The boom adopts symmetrically arranged structure

臂架采用对称结构, 伸缩臂与基础臂在同一轴线上, 伸缩臂通过销轴直接连在基础臂头部, 无连接臂, 不受侧向力, 无应力集中, 不会发生疲劳断裂现象, 所以臂架系统更加稳固可靠。

The boom is symmetrically arranged with a symmetrical structure. The telescopic arm is connected to the base arm on the same axis. The telescopic arm is directly connected to the base arm through the pin. No connecting arm, no lateral force, no stress concentration, no happen Fatigue cracking, so the boom system is more stable and reliable.



摆动式飞臂

Swinging arm

摆动飞臂可进行±45°摆动, 可以增加喷射机构的灵活性, 提高单次可喷面积, 并使受喷面更加平整, 美观, 同时也减少了转台回转次数, 增加臂架稳定性。

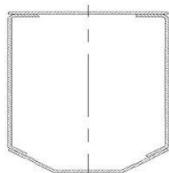
The boom can swing ± 45°, can increase the flexibility of the jet mechanism to improve the single sprayable area, not only the spray surface is more smooth, beautiful, but also reduce the turntable rotation times, increase the stability of the boom.



臂架截面**Boom section**

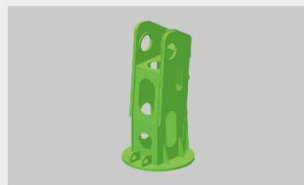
伸缩臂采用四块BS700高强度钢板折弯后焊接而成，焊缝结合处都有搭接筋板，臂架整体刚度增加臂架刚度增加使伸缩臂在湿喷作业状态下，抖动幅度小，稳定性好，可以提高受喷面质量。

Telescopic arm with four BS700 high-strength steel plate welded after bending, weld joints have a lap bar, The rigidity of the boom increases so that the telescopic arm has a small vibration amplitude under the wet spraying operation, good stability, can improve the quality of sprayed surface.

**加强型回转驱动机构****Reinforced rotary drive mechanism**

回转减速机采用涡轮蜗杆式减速机构，减速比大，自锁能力强，输出扭矩大，运行平稳，可靠性高。采用知名品牌回转马达，排量，扭矩大，稳定性好，在电比例阀的精确控制下，回转无抖动现象。

Rotary reducer adopts turbo-type gear reduction mechanism, big reduction ratio, strong self-locking ability, the big output torque, stable smooth operation, high reliability. Adopts well-known brand rotary motor, large displacement, torque, good stability, in the precise control of the proportional valve, the rotation without jitter phenomenon.

**电气控制系统****Electrical control system**

电气控制系统配置，遥控器采用国内知名品牌，遥控距离远，信号强，无掉线，串号现象。电气元器件均采用施耐德西门子等国际知名品牌。Electrical control system configuration. Remote control adopts domestic well-known brands, remote control distance, strong signal, no dropped calls, serial number phenomenon. The electrical components are all made by international famous brands such as Schneider, Siemens.

**速凝剂加注系统****Quick-setting agent filling system**

速凝剂泵采用变频电机驱动，采用施耐德变频器精确控制速凝剂泵的输出流量，可根据当前泵送的混凝土量自动调节添加量。速凝剂补充泵采用2600L/h大排量隔膜泵，可以在20分钟内将1000L的料箱补充完毕，大大节约了准备时间。

Accelerator pump driven by variable frequency motor, the use of Schneider inverter precision control quick-setting agent pump output flow, according to the current pumping of the amount of concrete automatically adjust the amount of added. Accelerator pump with 2600L/h large displacement diaphragm pump, you can add 1000L of the box in 20 minutes, greatly saving the preparation time.

**施工案例 Construction case**



车载式双喷头湿喷机技术参数

Vehicular double nozzle wet spraying machine technical parameters

项目 Item	参数 Parameter
喷头形式 spraying gun type	双喷头 double spray gun
最大理论混凝土输送量 Max Theo. output volume	25m ³ /h
最大泵送出口压力 Max Theo. Output Pressure	10Mpa
主电机功率 Main motor power	380V/45KW
最大骨料粒径 Max aggregate size	16mm
主油泵排量 Main oil pump displacement	112ml/r
速凝剂泵 (排量×压力×数量) Accelerator pump (output * pressure * qty.)	270x1.1x2
发动机型号 engine model	锡柴490 Xichai 490
排放标准 emission standard	国四 nation V
额定功率 rated power	46KW
最大爬坡能力 max gradeability	30%
驱动模式 drive type	4X2

技术特点 Technical features

- 变量主油泵，喷射量连续可调（无级变速）。
- 变量柱塞式速凝剂泵，速凝剂添加量连续可调。
- 无线遥控器，操作简单方便。
- 速凝剂添加与控制技术。
- 国内名牌计量泵计量准确，雾化射流与喷嘴物料混合使得速凝剂与混凝土混合均匀。
- 回弹率低，可降低到10%以下。
- Variable main oil pump, the spray volume can be adjusted (infinitely variable speeds).
- Variable plunger accelerator pump, the additive amount is continuously adjustable.
- wireless remote control, operation is easy and convenient.
- Accelerator addition and control technology.
- adopts famous domestic brand Measuring pump make measurement is accuracy, The mixture of atomized jet and nozzle material makes the accelerator and concrete mix well.
- Springback ratio is low, can be reduced to less 10%.

施工案例 Construction case





SPJ08-07-22混凝土湿喷机技术参数

SPJ08-07-22 concrete wet spraying machine technical parameters

	参数名称 The parameter name	单位 Unit	参数 Parameters
The machine performance 整机性能	最大理论喷射量 The maximum theoretical spray output	m ³ /h	0-2
	最大理论输送压力 The maximum theoretical pumping pressure	Mpa	7
	最高泵送次数 The maximum pumping frequency	次/min	12
	分配阀形式 Distributing valve form		S管阀
	输送缸规格 Delivery cylinder specification	mm	Φ140 × 800
Power system 动力系统	出料口直径 Discharging outlet diameter	mm	125
	上料高度 Feeding height	mm	1100
	额定电压 The rated voltage	V	380
	主电机功率 Main motor power	kw	22
Hydraulic system 液压系统	额定转速 Rated speed	r/min	1470
	液压油路形式 Hydraulic circuit form		开式回路
	主系统最高油压 The main system MTP	Mpa	25
	液压油箱容积 The hydraulic oil tank volume	L	200
Other parameters 其它参数	允许最大骨料粒径 The maximum aggregate size	mm	15
	输送管内径 Delivery pipe diameter	mm	Φ57
	主机质量 Whole machine weight	kg	2200
	拖行速度 Towing speed	km/h	≤8
	外形尺寸(长×宽×高) Overall dimensions (length x width x height)	mm	4300 × 1500 × 1550

技术特点 Technical features

- 喷射量连续可调(无级变速);
- 速凝剂添加量连续可调;
- 集中润滑系统,有效延长了磨损件的使用寿命;
- 产品轮式设计小巧灵活、移动方便、维护简单;
- 原装进口伊顿阀组和分体活塞;
- 泵送压力高,输送喷射距离远;
- 高性能:喷层混凝土性能高、密实、匀质、高强度;
- 速凝剂添加与控制技术:国内名牌计量泵计量准确,雾化射流与喷嘴物料混合使得速凝剂与混凝土混合均匀;
- 降低了机旁和喷嘴外粉尘浓度。消除了对工人健康的危害;
- 回弹度低,干燥时,混凝土回弹度达15%-50%,采用湿喷技术,回弹率甚至可降低到10%以下,有效节约成本。
- Continuous adjustable jet(CVT).
- Continuous adjustable accelerator amount.
- Saintyol's lubrication pump system, effectively prolonged the service life of the wear parts.
- Wheel designed products, flexible, mobile convenience, simple maintenance.
- Imported Eaton valve group and the split piston.
- High pumping pressure, delivery and spray long distance.
- High performance, high performance of spraying layer concrete, dense homogeneous, high strength.
- Accelerating agent adding and control technology, the domestic famous brand metering pump, accurate measurement of atomizing jet and nozzle material makes the accelerating agent mixed with concrete mixing.
- Reduce the dust concentration on machine side and nozzle. eliminate the harm to workers health.
- Rebound degree is low, dry spray, concrete rebound degree is 15%-50%, adopts the wet spray technology, resilient rate can be reduced to below 10%, effectively saved the cost.

施工案例 Construction case





HBT系列混凝土泵技术参数

HBT series concrete pump technical parameters

项目 (Item)		单位 Unit	S 阀泵 S valve pump			
			HBT60S-13	HBT60S-16	HBT80S-13	HBT80S-16
理论混凝土输送量 Theoretic concrete delivery volume	低压 low pressure	m³/h	60	60	80	80
	高压 high pressure	m³/h	36	35	47	46
理论混凝土输送压力 Theoretic concrete delivery pressure	低压 low pressure	Mpa	7.6	9.6	7.6	9.6
	高压 high pressure	Mpa	12.5	15.7	12.5	15.7
液压系统压力 Hydraulic pressure		Mpa	32	32	32	32
电机转速 Electric motor speed		r/min	1480			
主油泵 Main oil pump		-	德国原装进口哈威 / 力士乐, 日本川崎 Original German Hawe, Rexroth and Japanese Kawasaki			
主油缸/杆径 × 行程 Main cylinder dia./pole dia × stroke		mm	125/80 × 1650	140/90 × 1650	125/80 × 1650(1800)	140/90 × 1650(1800)
输送缸直径 Diameter of delivery cylinder		mm	200			
电机功率 Electric motor power		Kw	90	110	110	132
液压油箱容积 Capacity of hydraulic oil tank		L	500			
料斗容积 Hopper capacity		m³	0.6			
整机重量 Overall weight		Kg	5100	5200	5200	5500
最大泵送距离 Maximum pumping distance	垂直 Vertical	m	180	250	180	250
	水平 Horizontal	m	700	1000	700	1000

柴油系列混凝土泵技术参数

Diesel engine concrete pump technical parameters

项目 (Item)		单位 Unit	S 阀泵 S valve concrete pump			
			DHBT60S-13	DHBT60S-16	DHBT80S-13	DHBT80S-16
理论混凝土输送量 Theoretic concrete delivery volume	低压 low pressure	m³/h	60	60	80	80
	高压 high pressure	m³/h	36	35	47	46
理论混凝土输送压力 Theoretic concrete delivery pressure	低压 low pressure	Mpa	7.6	9.6	7.6	9.6
	高压 high pressure	Mpa	12.5	15.7	12.5	15.7
液压系统压力 Hydraulic pressure		Mpa	32	32	32	32
柴油机 (选配) Diesel engine (can be selected)		-	原装进口德国进口沃尔沃 / 道依茨 Original VOLVO/DEUTZ imported from Germany			
主油泵 Main oil pump		-	德国原装进口哈威 / 力士乐, 日本川崎 Original German Hawe, Rexroth and Japanese Kawasaki			
主油缸/杆径 × 行程 Main cylinder dia./pole dia × stroke		mm	125/80 × 1650	140/90 × 1650	125/80 × 1650(1800)	140/90 × 1650(1800)
输送缸直径 Diameter of delivery cylinder		mm	200			
柴油功率 Diesel engine Power		Kw	118	140	140	174
耗油量 Fuel consumption		g/Kwh	218	223	223	228
液压油箱容积 Capacity of hydraulic oil tank		L	500			
料斗容积 Hopper capacity		m³	0.6			
整机重量 Overall weight		Kg	5300	5500	5800	6000
最大泵送距离 Maximum pumping distance	垂直 Vertical	m	180	250	180	250
	水平 Horizontal	m	700	1000	700	1000



QINGDAO SAINTYOL DAWIN MACHINERY CO., LTD. XBS and diesel engine concrete pump



XBS、柴油引擎系列混凝土泵 青島思源達威機械有限公司

XBS系列混凝土泵技术参数

XBS series concrete pump technical parameters

项目 Item	单位 Unit	XBS30-10-37	XBS40-11-45	HBX50-11-55
最大理论输送量 Maximum theoretic delivery volume	m³/h	30	40	50
最大出口压力 Maximum outlet pressure	Mpa	10	11	11
骨料最大粒径 Maximum aggregate diameter	mm	≤30	≤30	≤50
缸径×行程 Cylinder diameter×stroke	mm	Φ140×800	Φ140×1200	Φ180×1200
主电机 Main motor	Kw	37	45	55
主油泵 Main oil pump		cone1e80	cone1e100	cone1e112
输送管内径 Inner diameter of delivery pipeline	mm	Φ80	Φ80	Φ125
外型尺寸 Outline dimension	mm	4300×1500×1550	4300×1500×1550	4300×1500×1550
重量 Overall weight	Kg	2200	2500	3200
最大理论输送距离 Maximum theoretic delivery distance	M	水平 Horizontal 500 垂直 Vertical 175	水平 Horizontal 570 垂直 Vertical 190	水平 Horizontal 570 垂直 Vertical 190

柴油机系列混凝土泵技术参数

Diesel engine series concrete pump technical parameters

项目 Item	单位 Unit	DXBS40-11-56	DHBX50-11-56
最大理论输送量 Maximum theoretic delivery volume	m³/h	40	50
最大出口压力 Maximum outlet pressure	Mpa	11	11
骨料最大粒径 Maximum aggregate diameter	mm	≤30	≤50
缸径×行程 Cylinder diameter×stroke	mm	Φ140×1200	Φ180×1200
柴油发动机功率 Diesel engine power	Kw	56	56
主油泵 Main oil pump		cone1e100	cone1e100
输送管内径 Inner diameter of delivery pipeline	mm	Φ80	Φ125
外型尺寸 Outline dimension	mm	4500×1500×1720	4300×1500×1720
重量 Overall weight	Kg	2800	3500
最大理论输送距离 Maximum theoretic delivery distance	M	水平 Horizontal 570 垂直 Vertical 190	水平 Horizontal 570 垂直 Vertical 190

电控系统 Electric system



主要电器采用施耐德、LS、正泰品牌。
Main electric elements are Schneider, LS and Zhengtai brand.

液压系统 Hydraulic system



全新的电控换向技术的应用使得泵送工作更加可靠，液压系统故障率更低；配置电控系统特制阀，大流量低能耗并且冲击小，延长使用寿命。The new hydraulic commutation control technology makes the pump work more reliable and has a lower failure rate of hydraulic system. It is equipped with specially-made valves with large flows, little energy consumption and light impact, ensuring longer service lives.

分体活塞 Separate piston



聚氨酯材质的分体活塞，随损，寿命长，保障泵送要求。
Use air cooled radiator fin type, make sure the system work under the allowed maximum temperature.

泵送系统 Pumping system



Φ140、180大直径输送缸，吸料性好，泵送排量。
Φ200、Φ230 large diameter cylinder, absorb good, pumping large displacement.

S管、眼镜板、切割环 S valve, glass plates, cutting ring



硬质合金眼镜板、切割环寿命长，保养方便。
Carbide eye plate, cutting ring long life, maintenance.

料斗 Glasses plates, cutting ring



大容量集料斗，无死角，容易清洗。
Big capacity hopper, easy to rush.

六点润滑 Six points lubrication pump



六点润滑保障关键部件免受磨损。
Six points lubrication protects main components from wear and tear

散热系统 Cooling system



采用风冷或水冷双冷却系统，不仅适用于高温气候，而且适用于严寒气候，有效控制液压系统油温，保障了设备运行的安全可靠。It adopts dual-cooling system, with cooling and water cooling, not only for hot climate but also for cold climate; it can effectively control the oil temperature of hydraulic system and ensure the safety and reliability.

技术优势 Technical superiority

- XBS DXBS系列产品是针对地暖施工的特点而专门开发的砂浆输送设备,适用于地暖工程中细石混凝土填充层或砂浆填充层的大面积、高效率的施工；
- XBS DXBS系列产品还适用于各类工程建设中细石混凝土的输送，耐火、保温材料的输送；生态环境建设中的绿化土壤的输送，各类基础桩的压力灌浆；
- XBS DXBS系列细石混凝土输送管基础上换成Φ100的输送管，可以输送3cm以下混凝土，使XBS细石泵的用途更加广泛。
- XBS DXBS series products are a kind of mortar conveying equipments specially developed according to the characteristics of floor heating projects. They are extensively applied in the large-area and highly efficient construction of fine stone concrete or mortar stuffing in floor heating projects.
- XBS DXBS series products are also widely used for the conveying of fine stone concrete, fire-resistant and heat-insulating materials in various construction projects; the delivery of afforesting soil in eco-environmental construction; the pressure grouting of various basic piles.
- The inner diameter of conveying pipe has developed into Φ100 based on former Φ80 so that XBS DXBS series products can convey concrete with diameter no more than 30mm, which makes XBS DXBS series products have broader applications such as the conveying of mortar, small stones and large aggregate concrete.

施工现场 Construction site





耐火材料专用高压泵技术参数

Ultra-high pressure spray pump

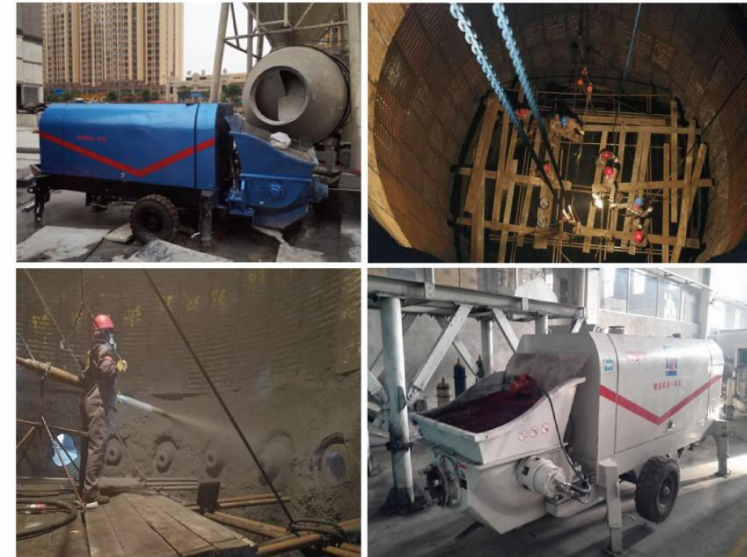
	参数名称 The parameter name	单位 Unit	参数 Parameter
The machine performance 整机性能	最大理论喷射量 The maximum theoretical spray output	m ³ /h	16
	最大理论输送压力 The maximum theoretical pumping pressure	Mpa	16
	最高泵送次数 The maximum pumping frequency	次/min	15
	分配阀形式 Distributing valve form		S管阀
	输送缸规格 Delivery cylinder specification	mm	Φ140 × 1200
Power system 动力系统	出料口直径 Discharging outlet diameter	mm	Φ125
	上料高度 Feeding height	mm	1100
	额定电压 The rated voltage	V	380
	主电机功率 Main motor power	kw	55
Hydraulic system 液压系统	额定转速 Rated speed	r/min	1470
	液压油路形式 Hydraulic circuit form		开式回路
	主系统最高油压 The main system MTP	Mpa	32
	液压油箱容积 The hydraulic oil tank volume	L	200
Other parameters 其它参数	允许最大骨料粒径 The maximum aggregate size	mm	30
	输送管内径 Delivery pipe diameter	mm	Φ 80
	主机质量 Whole machine weight	kg	2800
	拖行速度 Towing speed	km/h	≤8
	外形尺寸(长×宽×高) Overall dimensions (length x width x height)	mm	4300 × 1500 × 1550

整机概况 Whole machine profile

耐火材料超高压喷涂泵，适用于密集的耐火喷射混凝土和砂浆喷涂的应用。我们的超高压活塞泵可以每小时输送12吨。这台机器在最苛刻的耐火材料安装过程中，可以轻易地将耐火材料泵入超过100米的垂直高度。分体式搅拌和泵送式超高压喷涂泵，可以更加方便地进行移动、运输和维修。

Our ultra-high pressure spray pump, suitable for dense refractory sprayed concrete and mortar spraying. Our ultra-high pressure piston pump can deliver 12t/h. This machine even in the most demanding installation situation, still can easily pump refractories over a vertical height of more than 100 meters. Split mixer and pumping ultra-high pressure spray pumps is easier for moving, transporting and maintenance.

施工现场 Construction site





搅拌拖泵技术参数

Drag the mixing pump technical parameters

项目 Item	单位 Unit	JBT40	DJBT40
最大理论混凝土搅拌量 The maximum theoretical concrete mixing volume	m ³ /h	20	20
最大理论混凝土输送量 The theoretical maximum output	m ³ /h	40	40
混凝土输送压力 Concrete delivery pressure	MPa	11	11
混凝土缸规格/行程 Concrete cylinder specifications/stroke	mm	Φ180 × 700	Φ180 × 700
出料口直径 Discharging outlet diameter	mm	150	150
料斗容积/上料高度 Hopper capacity / Pumping height	L × mm	600 × 1070	600 × 1070
油箱容积 Oil volume	L	200	200
允许最大骨料粒径 The maximum aggregate size	mm	卵石: 50 碎石: 40	卵石: 50 碎石: 40
液压油路形式 Hydraulic oil circuit form	mm	电控换向开式回路	电控换向开式回路
分配阀形式 Distributing valve form		S管阀	S管阀
额定转速 Rated speed	rpm	1480	1480
泵送电机(柴油机)功率 The electrical power	KW	45	56
提升电机功率 Boost motor power	KW	4.5	—
外形尺寸 Overall dimension	mm	4900 × 2050 × 2600	4900 × 2050 × 2600
整机重量 Total mass	kg	4800	5200

整机概况 Whole machine profile

用机械化代替人工已成为了这些承包商的大多选择。一台小型的铲车加上一台搅拌拖泵,即可代替五六人的工作量,而且工作效率也提高了数倍。利用铲车将砂子、石子、水泥等材料送入搅拌拖泵,用遥控操作搅拌拖泵料斗上料,之后搅拌拖泵即可自行完成搅拌、泵送到楼面等工作,整个操作相当简单,基本解放了劳动力。并且,搅拌拖泵还具有体积小、拖运方便、能耗小等特点,非常适合农村小型民建的使用。

With mechanization replace artificial has become the most choices of these contractors. A small forklift truck with a mixing pump, can instead of the five or six people work, but also improve the work efficiency many times. Using a forklift to sand and gravel, cement and other materials into mixing pump, operated by remote control mixing hopper feeding pump, and pump itself after mixing, pump to the floor, etc, the whole operation is fairly simple, basic liberated labour, Moreover, the mixing pump has small volume, convenient transferring, low energy consumption, etc, very suitable for the use of rural small committee.

技术特点 Technical features

- 一体化设计,使设备占用空间小,移动灵活方便;
- 集搅拌和泵送于一体,使用户更方便地进行高效率施工;
- 配置高性能稳定。全自动化操作,经久耐用易维护,寿命长;
- 施工时,不会对楼板的钢筋结构造成影响,浇筑的楼板质量更优秀;
- 适用于各种民建房,公路,农田水利等工程建设。
- Integrated design, make the equipment to take up a little space move flexible and convenient.
- Integrating mixing and pumping, make the user more easily to use for efficient construction.
- Configuration of high performance stability. Full automatic operation, durable easy maintenance, long service life.
- When on construction, it will not affect floor reinforcement structure, the quality of casting slab is better.
- Suitable for all kinds of people to build, highway, water conservancy project construction, etc.

施工案例 Construction case





轻质土（发泡混凝土）制备设备技术参数

Light soil (foam concrete) preparation equipment technical parameters

项目 Item	单位 Unit	参数 Parameter
发泡水泥输送量 Foam cement delivery	m ³ /h	100
主电机功率 Main motor power	kw	15
空压机电机功率 Air compressor motor power	kw	7.5
搅拌仓电机功率 Mixing tank motor power	kw	5.5
搅拌仓上料高度 Mixing tank height	mm	1100
三次搅拌仓容积 Three mixing tank volume	m ³	2
主机外型尺寸 Host size	mm	4600x2500x2200
主机重量 Host weight	kg	3400
最大输送距离 Maximum conveying distance	m	水平500 垂直100

整机概况 Whole machine profile

泡沫混凝土填充专用生产设备CSP100是集发泡系统、计量系统、混合系统、泵送系统、操作系统于一体的大量轻质土生产设备，是我公司针对泡沫混凝土填充工程量大，要求设备施工速度快，施工效率高，性能稳定的施工需求，精心设计而成的发泡水泥填充专用设备。本设备成功攻克传统发泡水泥机运用于填充工程，施工速度慢等技术难题，使施工更加方便快捷，操作更加简单，产品质量更加标准。

Foam concrete filling production equipment CSP100 is a foam system, metering systems, hybrid systems, pumping systems, operating systems in one of the large amount of light soil production prepared, is my company for the large amount of foam concrete filling project, requiring equipment construction speed, high construction efficiency, stable performance of the construction needs, carefully designed from the foam cement filled with special equipment. The equipment successfully overcome the traditional foam cement machine used in filling the project, the construction of technical problems, so that the construction more convenient and more efficient operation simple, more standard product quality.

施工案例 Construction case





水泥发泡机技术参数

Cement foaming machine technical parameters

项目 Item	单位 Unit	CSP30	CSP40	CSP60
发泡水泥输送量 Foamed cement throughput	m³/h	20~30	30~40	50~60
电机总功率 The electrical power	kw	22	30	37
搅拌槽容积 Stirred tank volume	L	580	580	580
搅拌仓上料高度 Mixing warehouse loading height	mm	1100	1100	1100
主机外型尺寸 The host installation dimensions	mm	2600 × 1600 × 1550	2600 × 1600 × 1550	2600 × 1850 × 1650
搅拌仓外型尺寸 Mixing silo installation dimensions	mm	1740 × 670 × 1450	1740 × 670 × 1450	1740 × 670 × 1450
上料机外型尺寸 Feeder installation dimensions	mm	3300 × 760 × 650	3300 × 760 × 650	3900 × 760 × 650
液压油箱容积 The hydraulic oil tank volume	L	150	150	225
主机重量 Whole machine weight	kg	1700	1900	2300
最大输送距离 Maximum transmission distance	M	水平400 垂直120	水平500 垂直150	水平500 垂直160

整机概况 Whole machine profile

CSP系列中小型水泥发泡机，是我公司自主开发的专利产品，采用全机械输送系统，可靠耐用，克服了螺杆泵寿命低，易磨损的缺点。该系列设备均集泵送、发泡和搅拌系统于一体，功能完善，结构简单，维护方便。发泡水泥的密度均可连续调节，稳定可靠，能满足各种密度的发泡水泥制品的需要。

CSP series of small and medium-sized cement foaming machine, are our company independent development of the patented product, adopt the whole mechanical transmission system, reliable and durable, overcome the low working life of the screw pump, easy to wear and tear of the faults. This series of equipment are integrating pumping, foaming and mixing system, perfect function, simple structure, convenient maintenance. The density of foamed cement can be continuous adjustment, stable and reliable, can meet the needs of all kinds of density of foamed cement products.



矿用泵技术参数

Mine pump technical parameters

项目 Item	单位 Unit	HBMG15/8-22SZ	HBMG30/12-75S
最大理论混凝土输送量 The theoretical maximum output	m³/h	16	31
最大理论泵送压力 The maximum theoretical pumping pressure	Mpa	8	12
输送管公称直径 Delivery pipe nominal diameter	mm	Φ80	Φ100
最大理论输送距离（水平/垂直） The maximum theoretical delivery distance	m	350/115	535/180
泵送油缸缸径/行程 Pumping oil cylinder diameter/stroke	mm	80/600	100/1000
混凝土输送缸缸径/行程 Concrete cylinder diameter/stroke	mm	140/600	160x1000
最大骨料尺寸 The maximum aggregate size	mm	30	30
外形尺寸 Overall dimensions (length x width x height)	mm	3720x1360x1500	主机：4024x1533x1500 动力：3790x1533x1640
整机质量 Whole machine weight	kg	2300	4950

整机概况 Whole machine profile

混凝土泵正越来越广泛地应用在建筑、交通、能源等基础设施建设中，它对保证工程质量、提高施工进度起着十分重要的作用。青科重工有限公司吸收世界各国混凝土泵的先进技术，自行设计、制造的HBMG15、30、80煤矿用混凝土泵，选用国际先进的液压组件，单回路、全液控的液压系统，具有结构合理、技术先进、性能优良及可靠性高等优点，是施工单位理想选择设备。

The concrete pump is increasingly applied extensively in the infrastructure constructions (building, traffic, and energy infrastructures) and plays an important role to guarantee the construction quality and improve the construction speed. The HBMG15, 30, and 80 coal mining concrete pumps designed and manufactured independently by Co-nele Group Co., Ltd. through the absorption of advanced technologies from the global concrete pumps adopt internationally advanced hydraulic units and single-circuit fully hydraulically-controlled hydraulic system, featuring the advantages of reasonable structure, advanced technology, outstanding performances, and high reliability, and are the ideal choices of equipment for construction units.



矿用混凝土湿喷机技术参数

Mine concrete wet spraying machine technical parameters

目 Item	单位 Unit	参数 Parameter
最大理论喷射量 The maximum theoretical spray output	m ³ /h	8
大理论泵送压力 The maximum theoretical pumping pressure	MPa	10
分配阀形式 Distributing valve form		S 管摆阀
送管公称直径 Delivery pipe nominal diameter	mm	Φ57
最大理论输送距离水平/垂直 The maximum theoretical delivery distance (Horizontal/vertical)	m	350/115
送油缸缸径/行程 Pumping oil cylinder diameter/stroke	mm	Φ80/1800
混凝土输送缸缸径/行程 Concrete cylinder diameter/stroke	mm	Φ140/800
斗容积/上料高度 Hopper capacity /Pumping height	m ³ /mm	0.28/1100
最大骨料尺寸 The maximum aggregate size	mm	15
混凝土坍落度 Concrete Slump	mm	80 ~ 220
电机功率/转速 The electrical power/speed	kW/ (r/min)	22/1470
源电压/频率 Power supply voltage/frequency	V/Hz	(380/660) /50
油箱容积 he hydraulic oil tank volume	L	200
洁方式 Clean way	/	高压水洗
外形尺寸: The dimensions:	mm	4300 × 1500 × 1550
机质量 Whole machine weight	kg	2300

整机概况 Whole machine profile

HSPM-12-10-22是一种带有轨道轮和拖动机构的矿用混凝土输送泵为隔爆、全液压型煤矿用湿喷机泵，采用电机驱动，广泛适用于煤矿井下工作环境。

HSPM-12-10-22 is a kind of mine concrete delivery pump with the track wheel and drag mechanism, it is a mine concrete pump for preventing explosion, automatic hydraulic working, driven by electrical motor, widely used in the coal mine working environment.

技术特点 Technical features

- 非常适用于煤矿井下狭窄空间的混凝土施工作业；
- 喷射压力可调(无级变速)；
- 设备配件消耗低主要易损件使用寿命长,集中润滑系统,有效延长了磨损件的使用寿命；
- 采用轮式设计小巧灵活、移动方便、维护简单；
- 送压力大, 输送喷射距离远；
- 高性能: 喷层混凝土性能高, 密实、匀质、高强度；
- 高可靠性: 关键件采用国内知名品牌保证设备高可靠性；
- 速凝剂添加与控制技术: 国内名牌计量泵计量准确, 雾化射流与喷嘴物料混合使得速凝剂与混凝土混合均匀；
- 降低了机旁和喷嘴外的粉尘浓度, 消除了对工人健康的危害；
- 回弹度低, 干喷时, 混凝土回弹度达15%—50%, 采用湿喷技术, 回弹率甚至可降低到10%以下, 有效节约成本。
- It is very suitable to the narrow space under the mine of the concrete construction operation.
- Continuous adjustable jet (CVT).
- Low equipment accessories consumption main pads, long service life, centralized lubrication system, effectively prolong the service life of the wear parts.
- Product wheel design flexible, mobile convenience, simple maintenance.
- High pumping pressure, jet distance.
- High performance, high performance concrete spray layer, dense homogeneous, high strength.
- High reliability: key-module adopt domestic famous brands to ensure equipment high additivity.
- Accelerating agent adding and control technology, the domestic famous brand metering pump, accurate measurement of atomizing jet and nozzle material makes the accelerating agent mixed with concrete mixing.
- Reduce the machine side and nozzle of dust concentration, to eliminate the harm to workers health.
- Rebound degree is low, dry spray, concrete rebound degree of 15%—50%, uses the wet spray technology, resilient rate can be reduced to below 10%, even effective cost savings.

施工案例 Construction case





污泥、煤泥泵技术参数

Sludge, coal slurry pump technical parameters

	参数名称 The parameter name	单位 Unit	参数 Parameter
Concrete pump/Concrete pump	最大理论输送量 The theoretical maximum output	m ³ /h	40
	输送压力 The maximum theoretical delivery pressure	Mpa	11
	最高泵送频率 The maximum pumping frequency	次/min	25
	分配阀形式 Distributing valve form		S管阀
	输送缸规格: 缸径×行程 Concrete cylinder diameter/stroke	mm	180×1200
	出料口直径 Discharging outlet diameter	mm	Φ125
	电机功率 The electrical power	kw	55
	额定电压/频率 Rated voltage/frequency	v/Hz	~380/50
	额定转速 Rated speed	r/min	1480
液压系统 Hydraulic system	液压油路形式 Hydraulic circuit form		开式回路
其它参数 Other parameters	泵送系统油压(安全阀设定值) The main system MTP(safety valve set point)	Mpa	32
	允许最大骨料粒径 The maximum aggregate size	mm	30
	输送管内径 Delivery pipe nominal diameter	mm	Φ125
	外形尺寸(长×宽×高) Overall dimensions (length x width x height)	mm	4710×1500×1550
	主机质量 Whole machine weight	kg	3000

整机概况 Whole machine profile

本系统拟采用世界先进的全液压双缸活塞泵;工作时料仓内的污泥通过螺旋给料机压入到泵送机构的料斗中,在液压活塞后退吸力作用下进入工作缸,经过液压系统中的液压油进出反向,液压驱动分配阀换向,另一个工作缸中的液压活塞开始后退并吸入污泥,而工作缸中的液压活塞向前推挤污泥使其快速流入管道。如此反复动作,使污泥源源不断流入管道可任意输送到各指定地点。如:锅炉内、干化设备中、转载车箱中、堆放填埋场等。

system in this paper adopts world advanced hydraulic double cylinder piston pump: on working the sludge in the bins through screw feeder hopper pumped into the pump body under the action of a hydraulic piston back suction cylinder into the cylinder a hydraulic system of hydraulic oil in and out of the reverse, hydraulic drive distributing valve reversing, another work cylinder of the hydraulic piston started receding and inhaled sludge, and working cylinder of the hydraulic piston push forward the sludge to make it fast into the pipeline. Such action, make the sludge flowing into the pipeline can be arbitrary transported to the designated place. Such as boiler, drying equipment, reproduced in the trunk, piled up in the landfill, etc.

技术特点 Technical features

- 结构合理、占地面积小,管道布置灵活,可以架空或地沟铺设、垂直上下及90度转弯。与传统的螺杆泵输送方式相比,可节省大量的基建投资;
- 输送过程全封闭、无污染,可改善工作环境,达到环保要求;
- 输送压力大、距离远、输送高度高;
- 全程自动化控制、远程监控,可实现泵房、集控室两地操作;
- 操作简单、故障率低,全程无人值守、维修方便,运行成本低廉。
- Reasonable structure, cover a small area; Piping layout flexibility, can be raised or trench laying, vertical turn up and down and 90 degrees change. Compared with the traditional way of conveying pump, cansave a lot of infrastructure investment.
- Totally enclosed conveying process, no pollution, can improve the working environment, to achieve environmental protection requirement.
- High delivery pressure, long distance and high.
- Full automatic control, remote monitoring, can realize pump room, control room operating in different place.
- Simple operation, low failure rate, the entire unattended, easy maintenance, low operating cost.

施工案例 Construction case





MPS55



N2



N5

喷浆机技术参数

Shotcrete machine technical parameters

项目 Item	单位 Unit	参数 Parameter		
型号 Model	-	MPS55	N2	N5
电机 Pumping motor	KW	5.5+2.2KW-380V	4KW-380V	7.5KW-380V
最大颗粒 Allowed max. Aggregate diameter	mm	3	3	3
理论排量 Material theoretical output	l/min	40	30	22
输送压力 Conveying pressure	Bar	40	30	25
上料高度 Feeding height	cm	56	125	25
搅拌机容积 Mixer capacity	L	120	-	110
尺寸 Dimension	mm	2300X800X1300	1620X480X1020	1200X720X1600
重量 Weight	kg	380	165	265

整机概况 Whole machine profile

喷浆机系列产品是我公司结合我国建筑和建材的特点，在德国先进技术的基础上研制改进的一种新型节能、环保的建筑机械。这种新型机械完全适合我国的各类建筑喷浆施工。

我公司通过完美的设计，配合卓越的工业技术才制造出这种性能可靠、适应性强、坚固耐用、操作简单的喷浆机组，受到各级建筑行业人士的称赞和表扬，也受到有关领导的大力支持和推广。

结合当前市场出现的墙体结构薄、保温体系的CS板、SB板、聚苯乙烯板(EPS)、聚苯颗粒板等等，这些网板上的砂浆墙面机器操作容易、硬度高、粘合力强、无空鼓、开裂等现象；而人工操作网架结构的砂浆墙面难度高、硬度低、粘合力不够，容易出现空鼓、开裂等。

PJB series are a new type of energy-saving and environmentally-friendly construction machinery developed by our company and enhanced on the basis of Germany advanced technologies. It's completely applicable to all types of spraying constructions. With perfect spraying assembly, blending perfect design with excellent industrial technologies, is reliable, adaptable, strong and durable, and easy to operate. Therefore, it has been praised and recognized by insiders at all levels and strongly recommended and generalized by relevant leaders.

Assorted with the current sound-and-thermal insulation system of the space truss structure like CS board, SB board, EPS board, and polyphenyl particle board, the mortar wall sudace machine of these half-tones is featured by easy use, high hardness, good adhesion, and no hollowness and cracks, distinct from the shortcomings of high difficulty, low hardness, insufficient adhesive, and likely hollowness and cracks of that of the manually-operated space truss structure.

技术特点 Technical features

- 适用：喷涂抹灰轻质干粉材料，例如：石膏基、水泥基、石灰基及保温砂浆材料等，同时也可适用于自流平机械泵送施工。
- 特点：全自动预混搅拌、水计量、喷涂功能于一体。
- 高端配置：德国隔膜式空压机，西门子电器；喷射式水泵，意大利水流量控制系统；德国螺杆泵（D6-3），意大利灰浆管（25mm-15m）；韩国空气管（10mm-16mm），喷枪遥控等。
- Application, Be used to spray ash light dry mortar material, such as gypsum-based, cement-based, lime-based and insulation mortar materials, etc. can also be used for self-leveling mechanized pumping construction.
- Feature, Automatic premixed mixing, water metering, spray function in one
- High configuration, German diaphragm air compressor, Siemens Jet pump, Italian water flow control system. German screw pump(D6-3), Italy mortar pipe(25mm-15m). Korea air pipe(10mm-16mm), spray gun remote control.

施工案例 Construction case



服务承诺 Service Promise

- 我们定期为服务工程师提供技术、服务、礼仪等全面的培训，使服务队伍的各项技能得到持续提升，让每位工程师都成为行业技术专家。

We will train the engineer about technology, service, etiquette and so on regularly, which can promote the service people's all skills and ensure everyone become to the industry expert.

- 以客户为中心，从售前、售中、售后全方位为您提供优质、高效的服务。

We insist "Customer-focused", we supply the high quality and efficient service from pre-sales, sales and after-sales.

- 如遇问题，请及时拨打服务热线0532-89659612 我们为您提供全天候、全方位的咨询服务。接到您的电话后，及时派员与您进行联系沟通，迅速为您排除故障，使您满意。

Any problems, please call our service hotline 0532-89659612, all-round consultation service will be prepared for you. After your call, we can arrange the expert to communicate with you and help you solve the problems satisfactorily.

售前 Pre-sales

- 担当您的技术助理，根据现有土地条件和施工状况及特殊要求为您量身订制最佳施工方案。

Work as your technical assistant, special design for you according to your land, construct condition and other requirement.

Hotline 0086 186 69798625



售中 Sales

- 根据合同进行设备的安装调试工作；

Install and debug equipment according to contract.

- 服务工程师协助您进行首次开机准备工作并为您进行调试；

After sales engineer will help you do prepare works for the first start-up and debug for you.

- 现场免费提供操作及维修人员的培训，保证操作人员掌握设备的使用方法、工况要求，产品的正确保养方法，产品常见故障的正确诊断和排除方法。

On the working site, we supply operation and serviceman training for free. Besides, we can make sure operator can get hold of usage, working requirement, correct maintain way and diagnose remove correctly when machine broke down.

售后 After-sales

- 对设备定期巡检，提醒客户保养维护设备；

Inspect machine regularly, remind user maintain machine.

- 控制程序终生免费升级；

Update control system for free.

- 保修期内产品发生故障时，免费上门维修，保修配件免费送货上门；

We will visit and repair for free when machine break down during warranty period. Guarantee spare parts also free delivery to your door.

- 保修期外，提供终身有偿服务，产品终身供应配件。

Out of warranty period, we can supply paid service and spare parts all time.

客户至上、敏捷有效、合作共赢

Customer is God, quick and efficient, cooperation and win

为客户创造价值才能为自己创造价值

Creating value for customer equal to for ourselves

简捷、全面、可靠、积极、主动、优质、及时

Simple and direct, comprehensive, reliable, positive, initiative, high quality, timely