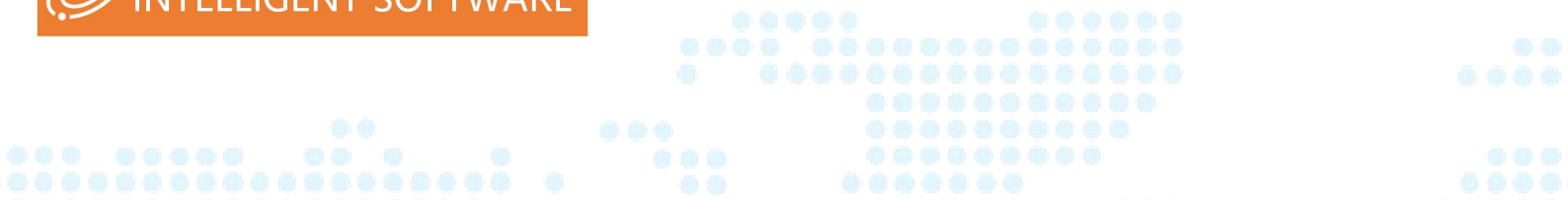


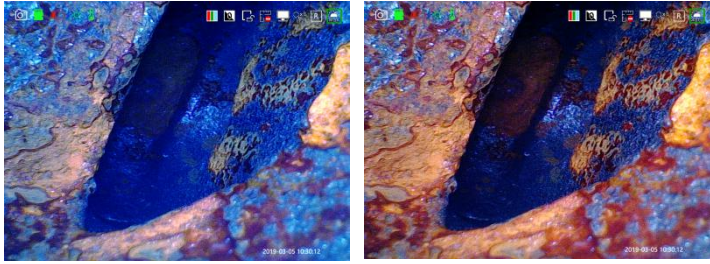
JEET TU SERIES HD BORESCOPE



**Industrial Video Borescope
Solution Provider**



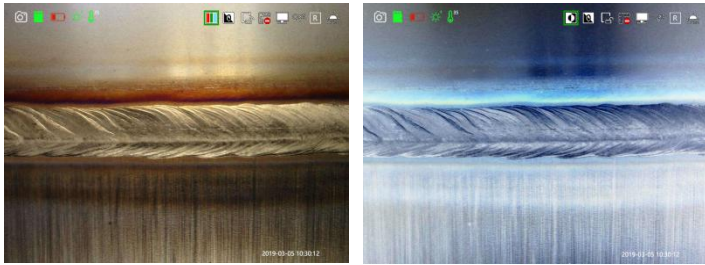
Strong intelligent image processing system: with the functions of mage rotation, white balance, exposure control, negative film and zoom in & out, comparative measurement, it can meet all kinds of complicated inspection



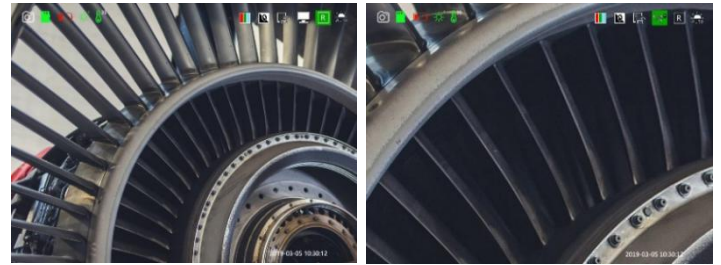
White Balance: Auto white balance with strong color reduction; manual-control white balance according to inspection needs.



Exposure Setting: exposure suppression--the polished object is also inspected clearly; exposure compensation--when checking large cavity, it can be more effective and clearer

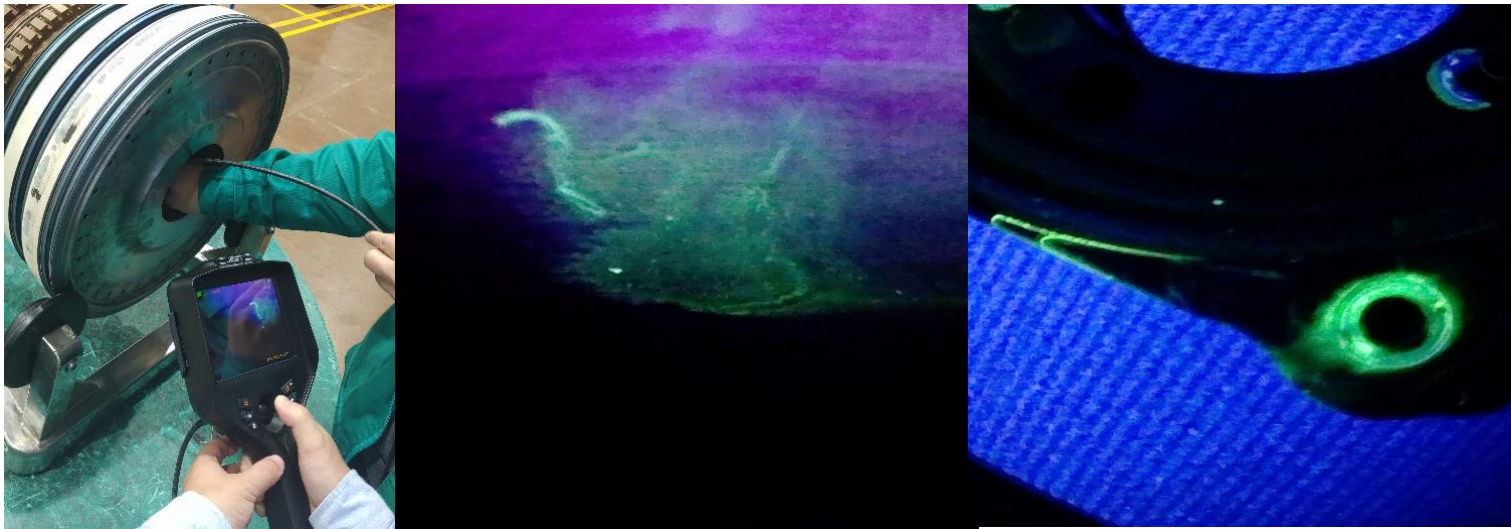


Normal Mode: HD image effect Negative Film Mode: Enhance the ability to compare and analyze the internal defects of the inspected objects.



Support 8X zoom in/out

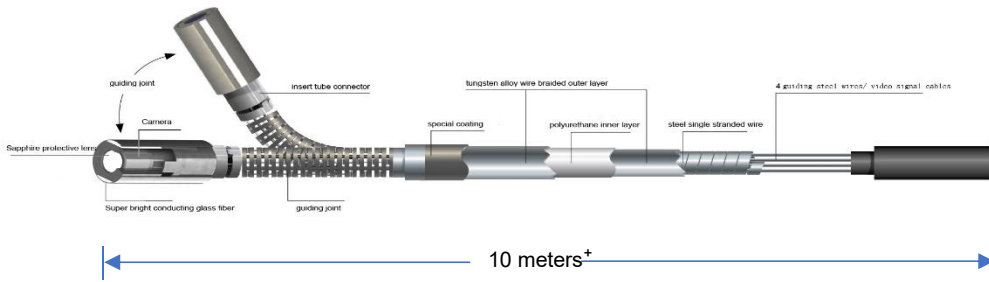
UV Inspection on Site



FLEXIBLE ARTICULATION CONTROL

360 ° joystick-control articulation, damping type positioning design, precise probe locking technology, make the detection more accurate and efficient. Independently developed technology of long-distance transmission ensures bending angle $\geq 100^\circ$, even the tube reaches 10 meters.





360° precision articulation

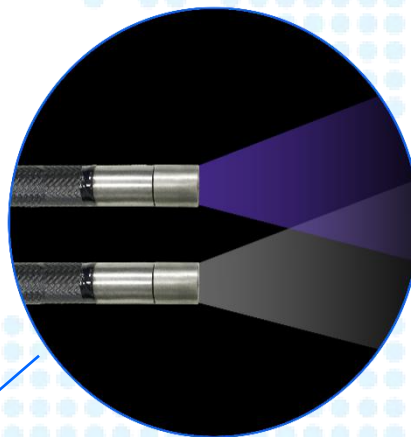


maximum bending angle $\geq 190^\circ$

STRONG HARDWARE

TU series HD UV fluorescent videoscope adopts modular design, the host and the handle can be separated with one button. The dual light source of the probe is designed in an integrated way, and an insert tube is equipped with both ultraviolet light and white light at the same time. By one-key switch through the universal button, white light can be used to find the direction, and ultraviolet fluorescence detection can be performed.

Monitor and tube can be separated by one button.



WIFI button



360° joystick control



damping control



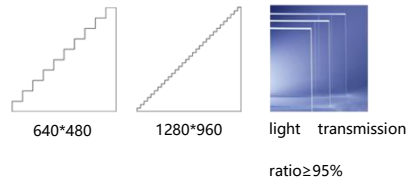
High temperature alarm function: Orange alarm when the temperature is above 65 °C; Red alarm and shutdown when the temperature is more than 80 °C.



The image can be outputted to HD display by HDMI.



Original dual battery design, 8 hours working time; real-time battery indication



Display resolution: 1280*960, high light, wide color gamut, all sight viewing angle, ensure clear image, rich colors and good color reproduction.

QUALITY ASSURANCE

All products are complied with RoHS, CE and ISO standard and passed testing for temperature, waterproof, drop, vibration and pressure. We devote ourselves to providing high-quality professional inspection instrument to every customer.



PARAMETERS

| | | |
|-------------|---------------------------------|---|
| Tube System | Probe Diameter(mm) | Φ6 |
| | Camera Pixels | 1,000,000 |
| | Image Resolution | 1280×720 |
| | Video Resolution | 1280×720 |
| | DOF | 10-100mm |
| | FOV | 120° |
| | Viewing Direction | front view |
| | Light Source | Rear-mounted optic fiber cold UV+White source |
| | Illuminance | 1200uw/cm ² |
| | Tube Length | 1.5m/3.0m/5.0m(customized for other length) |
| | Protecting Device of Durability | 42mm buffer protection device between tube and handle |
| | Articulation | 360° joystick-control articulation |

| | | |
|----------------|---|--|
| | Bending Angle | Maximun:190° |
| | Probe Positioning | Damping positioning & articulation lock device |
| | Wi-Fi Transmission | Image transmission to Mobile phone, computer by Wi-Fi(optional) |
| Monitor System | Display | 5.1" color IPS display, all sight viewing angle, sunshade design |
| | Display Resolution | 1280*960 |
| | Zoom In/Out | 8X |
| | Language | English / French / German / Spanish / Japanese / Traditional Chinese / Simplified Chinese / Russian / Korean |
| | White Balance Suppression | 5 levels adjustable |
| | White Balance | Auto white balance, automatically adjusts and eliminates speckles to achieve optimal images. |
| | Image Effect | Negative film/ black & white/standard |
| | Temperature Indication | High temperature alarm (optional) |
| | IP Level | Probe/tube: IP67 |
| | Software Function | Playback, image parameters adjust and rotate |
| | Structure | Hand-held integrated design |
| | Image/Video Format | JPEG/MOV |
| | Comparative Measurement | Use measuring probe and analog scale to compare and analyze the internal defect and size of the inspected object. |
| | Data Port | HDMI video output, Micro USB port with water & dust proof device |
| | Working Time | ≥8h |
| | Battery Capacity | 3.7V, 3200mAh×2 |
| | Power Charge | DC5V, 1A |
| | Weight | ≤0.8Kg |
| Compatibility | Interchangeable monitor and tube with different diameters | |
| Accessories | Standard Configuration | Instrument case:1pc; videoscope: 1 set; battery: 2pcs; card reader: 1pc; 32G. TF card: 1pc; charger: 1pc; USB cable: 1pc; user manual: 1 set |

Due to product updates, the final parameters should be based on specific models.