

# THREADING AND GROOVING

## Threading Machine

# SQ100F-L



### Capacity

- **Pipe:** ½"-4" (8mm-100mm)
- **Bolt:** 10mm-33mm

### Features

- Heavy-duty proven performance.
- Threads ½"-¾" pipe at 36RPM, 1"-2" at 20RPM, 2½"-4" at 11RPM.
- An induction motor ensures sound levels well when using.
- A special capacitor-start / capacitor run motor allows the machine to thread where voltage drop is experienced.

### Technical Specifications

- **Motor:** 1500W induction, 50/60Hz, single phase.
- **Switch:** ON/OFF heavy duty switch, foot switch and FOR/OFF/REV switch is optional.
- **Spindle Speed:** 36/20/11 RPM.
- **Front Chuck:** Hammer type with replaceable rocker action jaw inserts.
- **Rear Centering Device:** Cam action.
- **Oiling System:** Through die head, with intergral oil reservoir.

### Standard Dies

- ½"-¾" universal HS dies set.
- 1"-2" universal HS dies set.
- 2 1/2"-4" universal HS dies set.

### Ordering Information

Catalog No.	Model No.	Description	Spindle Speed RPM	Pipe Threading Capacity		Rod Threading Capacity	N.W (kg)
				in.	mm.	metric	
304306	SQ100F-L	110V, 50/60Hz	36/20/11	½-4	8-100	M10-M33	140
304307	SQ100F-L	220V, 50/60Hz	36/20/11	½-4	8-100	M10-M33	140

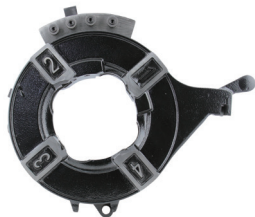
\* Die head and dies, order separately.

### Accessories

Catalog No.	Model No.	Description	N.W(kg)
	428	Die head, Self-open, ½"-2"	5.6
	447	Die head, Self-open, 2½"-4"	9
4581011	819	Nipple Chuck (optional)	4.5
40601008		reinforced cutting wheel	



428 die head



447 die head



reinforced cutting wheel



672A stand (optional)