

# THREADING AND GROOVING

## Threading Machine



### Capacity

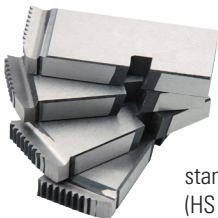
- **Pipe:** ¼"-1½" (8mm-40mm)
- **Bolt:** 12mm-33mm

### Features

- Compact, light weight design.
- Powerful motor and transmission.
- Through die head oiling.

### Technical Specifications

- **Motor:** 1500W universal, 50/60Hz
- **Switch:** ON/OFF heavy duty switch, foot switch and FOR/OFF/REV switch optional
- **Spindle Speed:** 56 RPM
- **Front Chuck:** Hammer type with replaceable rocker action jaw inserts.
- **Rear Centering Device:** Cam action.
- **Oiling:** Through die head.
- **Oil Pump:** Self-priming constant flow.



standard dies  
(HS standard)

### Standard dies

- ¼"-3/8" universal CS dies set.
- ½"-¾" universal CS dies set.
- 1"-2" universal CS dies set.



425 die head

### Ordering Information

Catalog No.	Model No.	Description	Spindle Speed RPM	Pipe Threading Capacity		Rod Threading Capacity	N.W (kg)
				in.	mm.	metric	
301503	SQ40	110V, 50/60Hz	38	¼-1½	8-40	M12-M33	38
302502	SQ40	220V, 50/60Hz	38	¼-1½	8-40	M12-M33	38

\* Die head and dies, order separately.



reinforced cutting wheel

### Accessories

Catalog No.	Model No.	Description	N.W(kg)
	425	Die head, Quick-open (standard)	5.3
	424	Die head, Self-open (optional)	5.8
40601009		reinforced cutting wheel	