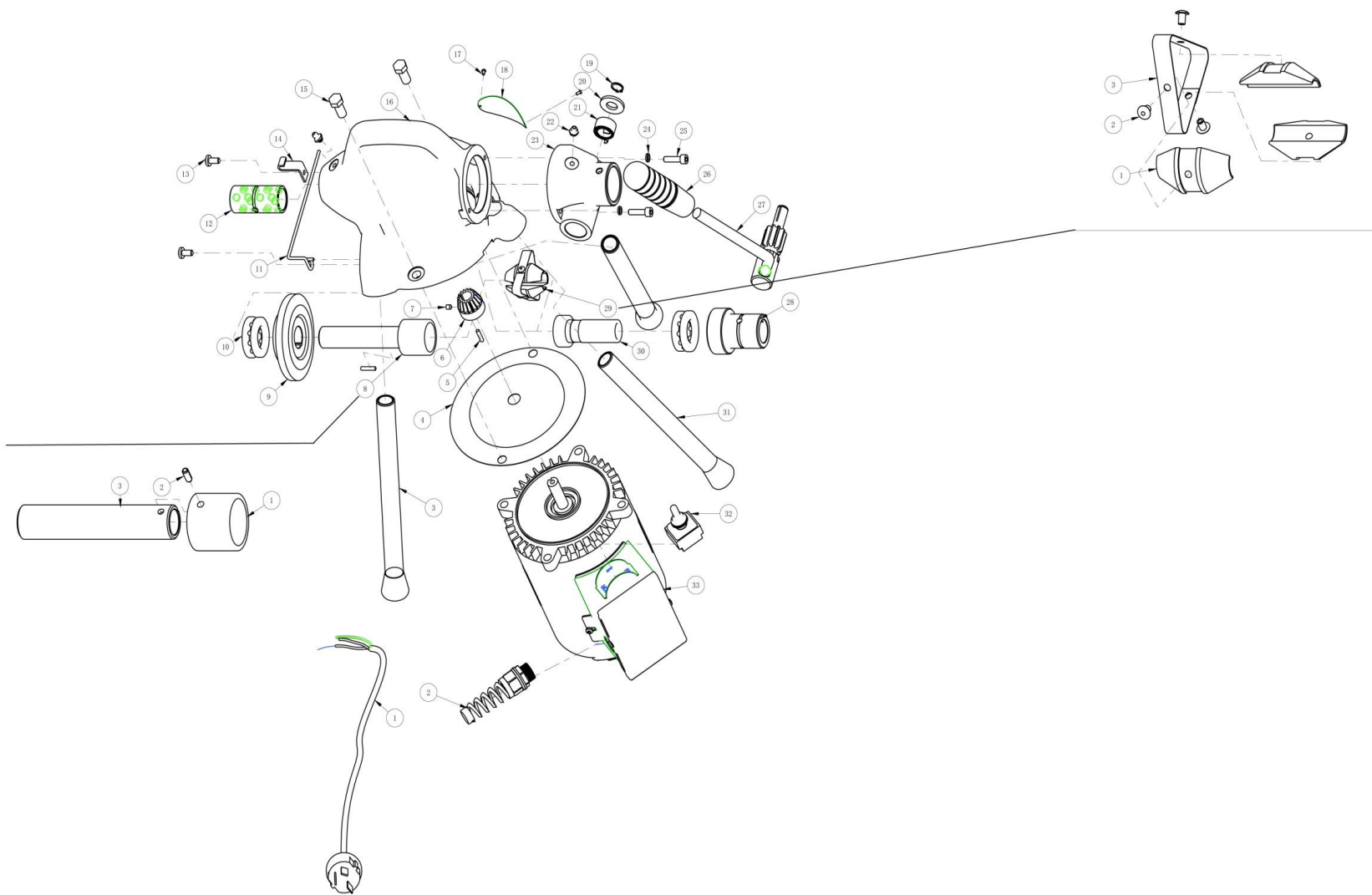


# A75中英文爆炸图 ( A75 spare parts list )





S/N	Ref. No.	品名	Description	Qty	S/N	Ref. No.	品名	Description	Qty
1	30402067/30402066	电源线	Power Cord	1	18	40801008	铭牌	Nameplate	1
2		长尾拉不脱	Cord Grommet	1	19	GB/T894.1-86	A型轴用弹性挡圈	Retaining Ring	
3	30109045	前长支脚总成	Front Leg Assy.	2	20	1/2"	美制平垫圈	Pinion Stem Washer	1
4	41601008	防护罩	Insulating Motor Gasket	1	21	40503003	发条弹簧	Pinion Spring	1
5	GB/1096-79	普通平键	Pin	2	22	GB1152-89	直通式压注油杯	Grease Fitting	2
6	40203006	小锥齿轮	Pinion Gear	1	23	40904001	抱轴定位套	Rack and Pinion Housing	1
7	GB/T79-2000	内六角圆柱端紧定螺钉	Hex Screw	1	24	GB/T93-1987	标准型弹簧垫圈	Washer	2
8	30101002	前磨擦套总成	Shaft	1	25	GB70.1-2000	内六角圆柱头螺钉	Screw	2
9	40203007	大锥齿轮	Bevel Gear	1	26	41705051	橡胶手柄	Handle Grip	1
10	UN	美制单向推力球轴承	Single Direction Thrust Ball Bearer	2	27	30102044	抱轴齿轮总成	Handle with Pinion Assembly	1
11	41004002	刀头架	Auger/Cutter Holder	1	28	41501015	滑套轴承	Gear Rack	1
12	41501014	铜合金轴套	Bronze Bushing	1	29	30102001	抱轴总成	Clutch Jaw Assembly	1
13	GB/T818-2000	十字槽盘头螺钉	Screw	2	30	41503021	后端磨擦套	Rear Clutch Cone Sleeve	1
14	41004001	挡扣	Catch	1	31	30109044	后短支脚总成	Rear Leg Assy.	1
15	GB/T5783-2000	全螺纹六角头螺栓	Hexagon Bolt	2	32	30402069	拨动开关	Switch	1
16	40104001	机体	Machine Body	1	33	30401075	电机总成220v50HZ	Motor 220V/50Hz	1
17	GB867-86	标牌铆钉	Nameplate Pin	2		30401076	电机总成110v60HZ	Motor 110V/60Hz	1
						30105017	16mm活动弯头钻	drop head cutter	
						30105018	16mm回收钻	retrieving auger	
						30105019	16mm漏斗型刀头	funnel auger	
						30105020	16mm鲨齿钻	shaektooth cutter	