

Overview

STI series inverter is a pure sine wave power frequency inverter which can convert 12/24/48VDC to 220/230VAC 50Hz based on full digital and intelligent design. It features high reliability, high efficiency, concise outline, full protection functions, easy installation and operation. The inverter can be applied in many fields, such as household appliances, electric tools and industrial devices etc, especially for solar photovoltaic power system.


Features

- Complete isolation-type inverter technology, noiseless output
- Adoption of advanced SPWM technology, pure sine wave output
- Dynamic current loop control technology to ensure inverter reliable operation
- Wide DC input voltage range
- Excellent EMC design
- Low output harmonic distortion (THD ≤ 3%)
- LED indicators for input voltage range, load power range, normal output & failure state.
- Optional energy saving mode
- Electronic protect for reverse polarity
- Extensive protections: short-circuit, overload, under/over input voltage, over-temperature, and inverter's inner fault identification protections
- Wide working temperature range (industrial level)
- Continuous operation at full power



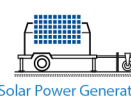
Solar Car



Solar Home



Solar Boat



Solar Power Generator

Technical Specifications

Model	STI200-12-220	STI200-12-230	STI200-24-220	STI200-24-230
Nominal Battery Voltage	12V		24V	
Input Voltage Range	10.5 ~16VDC		21 ~32VDC	
No Load Consumption	≤4W		≤5W	
Output Wave	Pure Sine Wave			
Output Voltage	220VAC±3%	230VAC±3%	220VAC±3%	230VAC±3%
Continuous Power	200VA			
Power 10 sec	300VA			
Power 1.5 sec	400VA			
Surge Power	640VA			
Frequency	50Hz±0.2%			
Distortion THD	≤ 3%(resistive load)		≤ 2%(resistive load)	
Efficiency at Rated Power	≥81%		≥85%	
Max. Efficiency	≥88%		≥89%	
Dimensions	314.5×166×100.8mm			
Installation	200×154mm			
Hole Size	8mm			
Net Weight	4.5kg			
Working Temperature	-20°C ~ +50°C			
Storage Temperature	-35°C ~ +70°C			
Humidity	< 95%(N.C.)			
Altitude	< 5000 m (Derating to operate according to IEC62040 at a height exceeding 1000 m)			

Technical Specifications

Model	STI300-12-220	STI300-12-230	STI300-24-220	STI300-24-230
Nominal Battery Voltage	12V		24V	
Input Voltage Range	10.5 ~16VDC		21 ~32VDC	
No Load Consumption	≤5W		≤6W	
Output Wave	Pure Sine Wave			
Output Voltage	220VAC±3%	230VAC±3%	220VAC±3%	230VAC±3%
Continuous Power	300VA			
Power 10 sec	450VA			
Power 1.5 sec	600VA			
Surge Power	960VA			
Frequency	50Hz±0.2%			
Distortion THD	≤ 3%(resistive load)		≤ 2%(resistive load)	
Efficiency at Rated Power	≥81%		≥87%	
Max. Efficiency	≥90%		≥91%	
Dimensions	314.5×166×100.8mm			
Installation	200×154mm			
Hole Size	8mm			
Net Weight	5.3kg			
Working Temperature	-20℃~ +50℃			
Storage Temperature	-35℃~ +70℃			
Humidity	< 95%(N.C.)			
Altitude	< 5000 m (Derating to operate according to IEC62040 at a height exceeding 1000 m)			

Technical Specifications

Model	STI500-12-220	STI500-12-230	STI500-24-220	STI500-24-230
Nominal Battery Voltage	12V		24V	
Input Voltage Range	10.5 ~16VDC		21 ~32VDC	
No Load Consumption	≤5W		≤6W	
Output Wave	Pure Sine Wave			
Output Voltage	220VAC±3%	230VAC±3%	220VAC±3%	230VAC±3%
Continuous Power	500VA			
Power 10 sec	750VA			
Power 1.5 sec	1000VA			
Surge Power	1600VA			
Frequency	50Hz±0.2%			
Distortion THD	≤ 5%(resistive load)		≤ 2%(resistive load)	
Efficiency at Rated Power	≥81%		≥87%	
Max. Efficiency	≥91%		≥93%	
Dimensions	324.5×186.6×111.8mm			
Installation	200×174.6mm			
Hole Size	8mm			
Net Weight	7.3kg			
Working Temperature	-20°C~ +50°C			
Storage Temperature	-35°C~ +70°C			
Humidity	< 95%(N.C.)			
Altitude	< 5000 m (Derating to operate according to IEC62040 at a height exceeding 1000 m)			

Technical Specifications

Model	STI700-24-220	STI700-24-230
Nominal Battery Voltage	24V	
Input Voltage Range	21 ~32VDC	
No Load Consumption	≤8.5W	
Output Wave	Pure Sine Wave	
Output Voltage	220VAC±3%	230VAC±3%
Continuous Power	700VA	
Power 10 sec	1050VA	
Power 1.5 sec	1400VA	
Surge Power	2240VA	
Frequency	50Hz±0.2%	
Distortion THD	≤ 3%(resistive load)	
Efficiency at Rated Power	≥87%	
Max. Efficiency	≥93%	
Dimensions	335×232×123.3mm	
Installation	230×216mm	
Hole Size	8mm	
Net Weight	9.4kg	
Working Temperature	-20°C~ +50°C	
Storage Temperature	-35°C~ +70°C	
Humidity	< 95%(N.C.)	
Altitude	< 5000 m (Derating to operate according to IEC62040 at a height exceeding 1000 m)	

Technical Specifications

Model	STI1000-24-220	STI1000-24-230	STI1000-48-220	STI1000-48-230
Nominal Battery Voltage	24V		48V	
Input Voltage Range	21 ~32VDC		42 ~64VDC	
No Load Consumption	≤10W		≤12W	
Output Wave	Pure Sine Wave			
Output Voltage	220VAC±3%	230VAC±3%	220VAC±3%	230VAC±3%
Continuous Power	1000VA			
Power 10 sec	1500VA			
Power 1.5 sec	2000VA			
Surge Power	3200VA			
Frequency	50Hz±0.2%			
Distortion THD	≤ 3%(resistive load)		≤ 2%(resistive load)	
Efficiency at Rated Power	≥87%		≥89%	
Max. Efficiency	≥93%		≥94%	
Dimensions	373×232×123.3mm			
Installation	260×216mm			
Hole Size	8mm			
Net Weight	11.8kg			
Working Temperature	-20°C ~ +50°C			
Storage Temperature	-35°C ~ +70°C			
Humidity	< 95%(N.C.)			
Altitude	< 5000 m (Derating to operate according to IEC62040 at a height exceeding 1000 m)			