


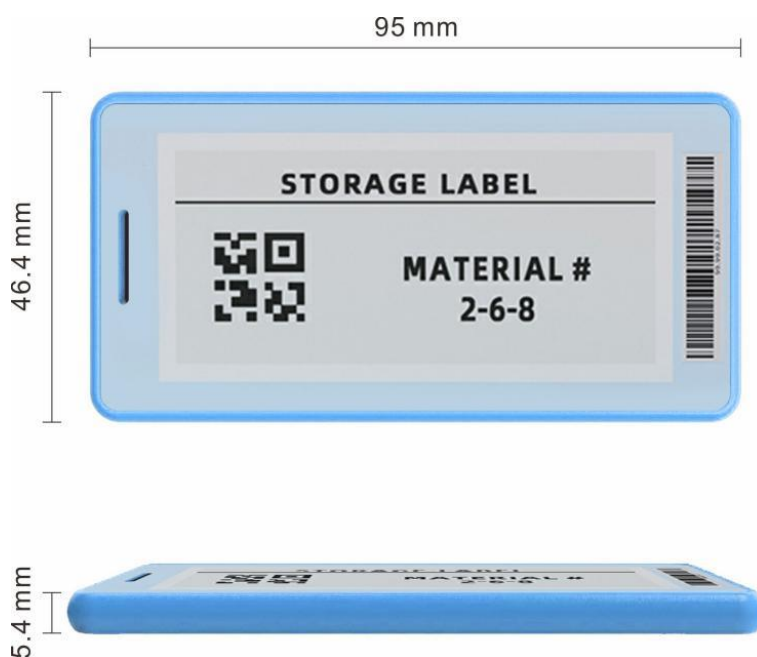
# 2.9 inch NFC Electronic Card SETPN29\_S Specification

DALIAN SERTAG TECHNOLOGY CO., LTD

# Sertag

## 2.9 " SETPN29\_S

	TECHNICAL DETAILS	Product code	SETPN29_S
		Dimensions (mm)	95*46.4*5.4mm
		Display technology	E ink
		Active display area (mm)	29(H) * 66.9(V)
		Resolution (pixels)	296*128
		Pixel size (mm)	0.227*0.226
		Pixel colors	Black/White
		Viewing angle	180°
		Operating temperature	0-50℃
		Power	No Battery & NFC power supply
		Operating frequency	13.56 MHZ NFC
		Proximity sensing	Yes
		Support content format	Text/Picture/QR code/Barcode
		Template design DIY	Yes



## Product features:

1. NFC card is a passive ultra-thin card that requires no power supply and can update more than 1 million times, providing a long service life
2. Original fast scanning technology, intelligent NFC sensing label, quickly update in seconds.
3. Supported content format: text/bar code/qr code/picture.
4. Pop-up editing interface, template design can be DIY, more templates to switch at will.
5. Ultra-thin shell, size: 95\*46.4\*5.4mm.
6. Support data interconnection and use a dedicated card reader.
7. IP66 waterproof and dust-proof structure design, safer.
8. Built-in status prompt LED to ensure the use of certainty.
9. Customers can develop apps by themselves, and we provide protocol.



ADER

## NFC ESL Solution:

NFC labels connect to the servers and controllers through dedicated card reader devices. The customer sends instructions to the controller, which transmits data through a dedicated card reader device, and the label content will be updated immediately.

### NFC ESL work program:

**Program ① Cloud NFC solution(Software+V2.4 Label Controllers+Card Reader+NFC card):**

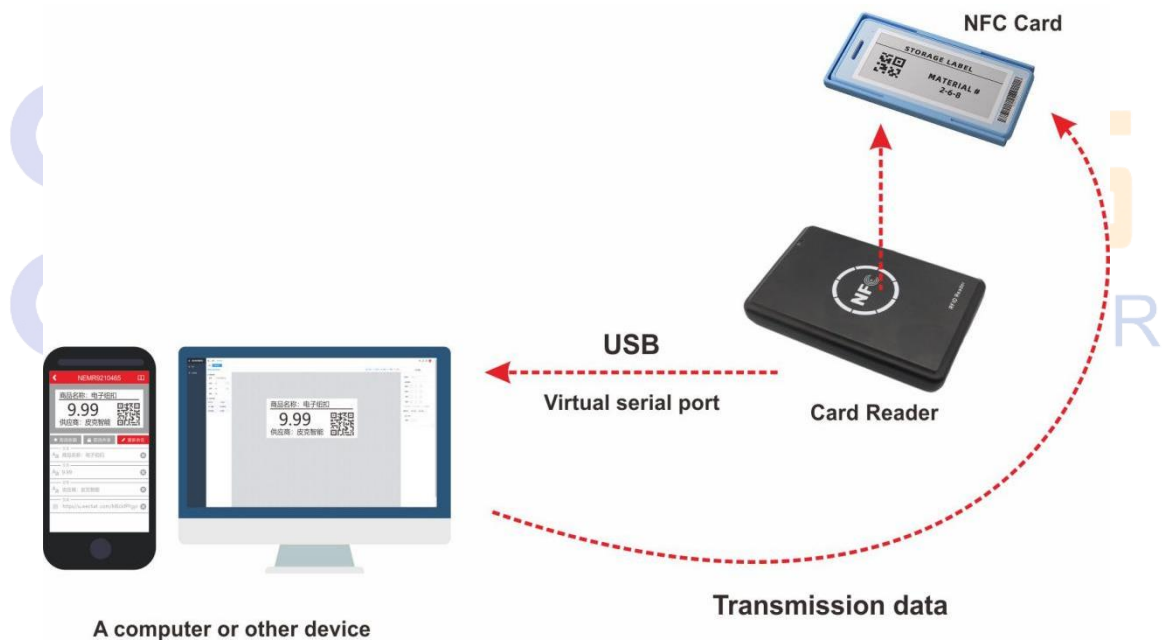
It is suitable for any scenarios.

**Program ② Local NFC solution(V4.4 Label Controller+Card Reader+NFC card):** V4.4 Label Controller is an integrated server and software device that can be directly connected to the local network without installing the software. It is very simple and convenient to install on the local. It is suitable for Testing ,small scenarios like:store,bakery, shop,pharmacy and so on.

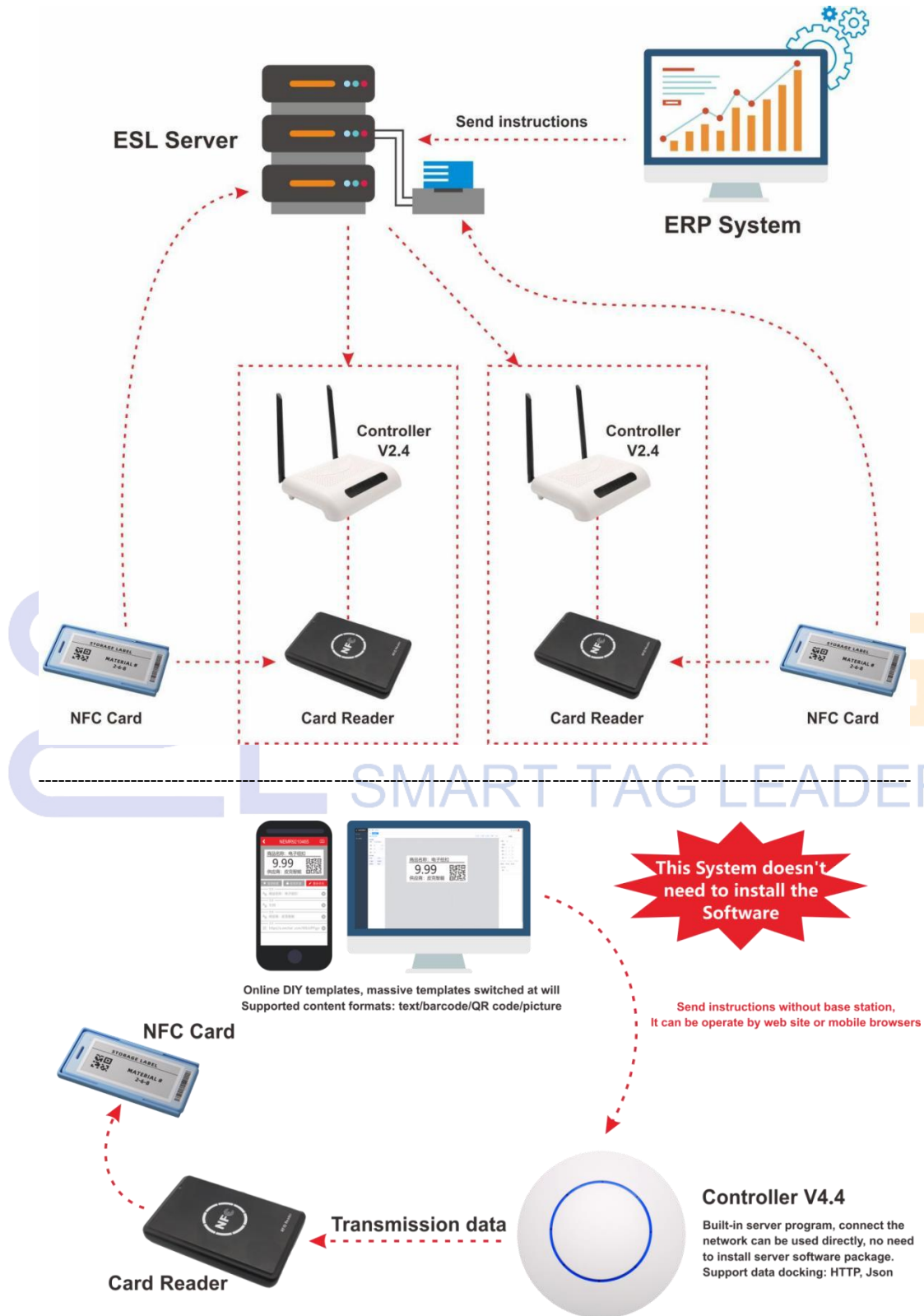
**Program ③ Mobile phone NFC solution:** Customers develop their own applications to control NFC cards, and we will provide a protocol.

## NFC ESL Direction:

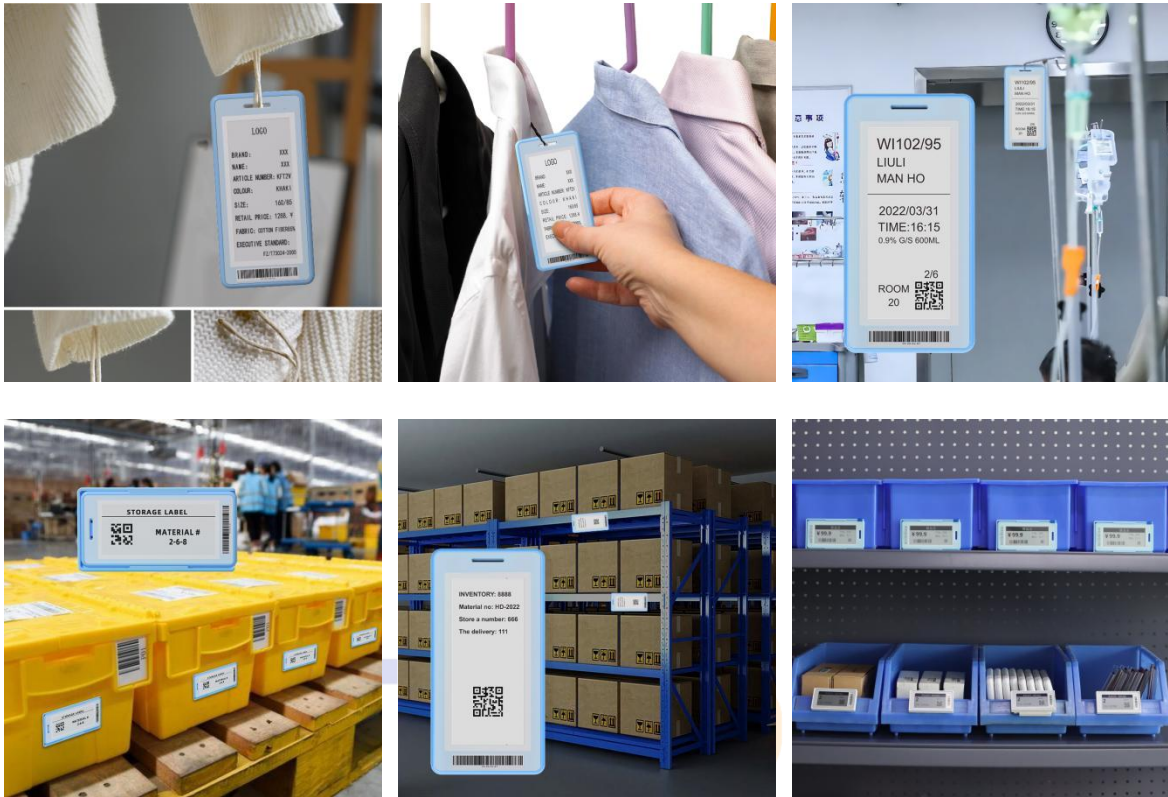
1. We provide agreements to develop our own mobile APP;
2. We provide the data protocol of card reader and card reader, which can send data through the serial port of the upper machine;
3. We provide the controller + card reader, operate and modify the content on the computer web page, to ensure the flexible use of the case, do not do any development can also operate on the web page, brush the card content;
4. The device sends instructions to operate through the network interface protocols to realize system docking and automatic card swiping (the data comes from your server).



## How does the NFC card work:



## Application scenario:

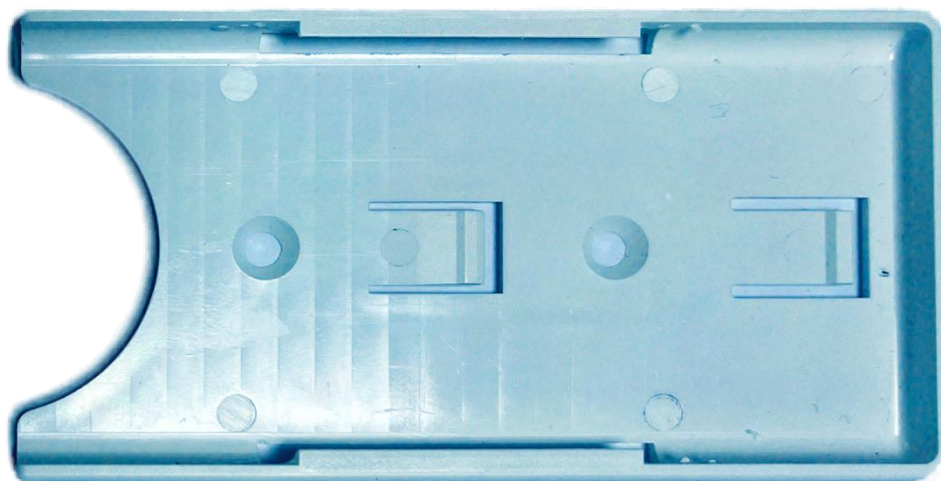


SMART TAG LEADER

## Product installation mode:

Way	Picture
Paste	
Hang rope hole	





**ST** SERTAG  
SMART TAG LEADER

