

Pick To Light System

---SETP_Label_V13

Pick to Light

E-commerce
Warehouse



Intelligent
Manufacturing



Intelligent
Warehousing



Dalian Sertag Technology Co.,Ltd

Innovation Point



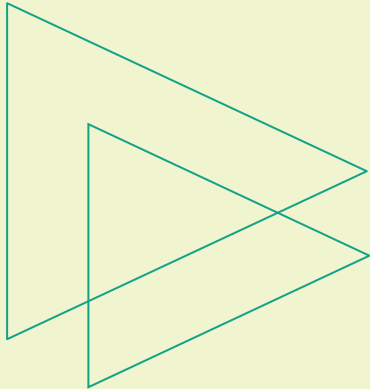
- 2.1 inch e-ink screen
- Wireless communication
- Buttons and three-color high-brightness LED indicator
- 250*122 dot matrix screen
- Support 24V external power supply / battery power supply
- DIY interface supports text/barcode/qr code
- Ultra-low power consumption

Summary of picking system

The electronic label picking system is a logistics auxiliary operation system developed using advanced electronic technology and communication technology. It is usually used in the sorting process of warehousing or modern logistics centers. It has the characteristics of fast picking speed, high efficiency, low error rate and paperless , standardized operating characteristics. As an advanced operating method, the electronic label-assisted picking system is more efficient when used in conjunction with a warehouse management system (WMS) or other logistics management systems.

The electronic label picking system is a set of electronic equipment installed on the shelf storage space. It is controlled by computers and software, and uses indicator lights or digital displays as auxiliary tools to guide pickers to complete their work correctly, quickly and easily.

Characteristics and benefits



Improve operation speed and quality



Easy and fast deployment



Achieve paperless standardized operations



Reduce operator training time



Reduce labor costs, management costs, etc.

Electronic Pick Tag

Receive and analyze the data information sent by the router, make corresponding instructions, and click the button to complete the picking.

- 2.1 inch e-ink screen
- Comes with 1 button
- Tag ID code is displayed on the front
- Wireless communication 868M, frequency hopping communication
- Communication rate 200K/50K
- Covering a communication radius of more than 30 meters
- Multi-color LED highlight indicator light
- Resolution 250*122, supports character, barcode, QR code display
- Dimensions: 70*34.7*13.6mm
- Two power supply methods are available: 1. Button battery pack, 2. 24V external power supply
- Customized two-way communication protocol, safe and reliable
- Screen display area: 23.71*48.55mm
- Docking interface protocol: HTTP & Json



Model: SETP_Label_V13

Electronic Pick Tag

SETP_Label_V13 (Battery Power Supply)

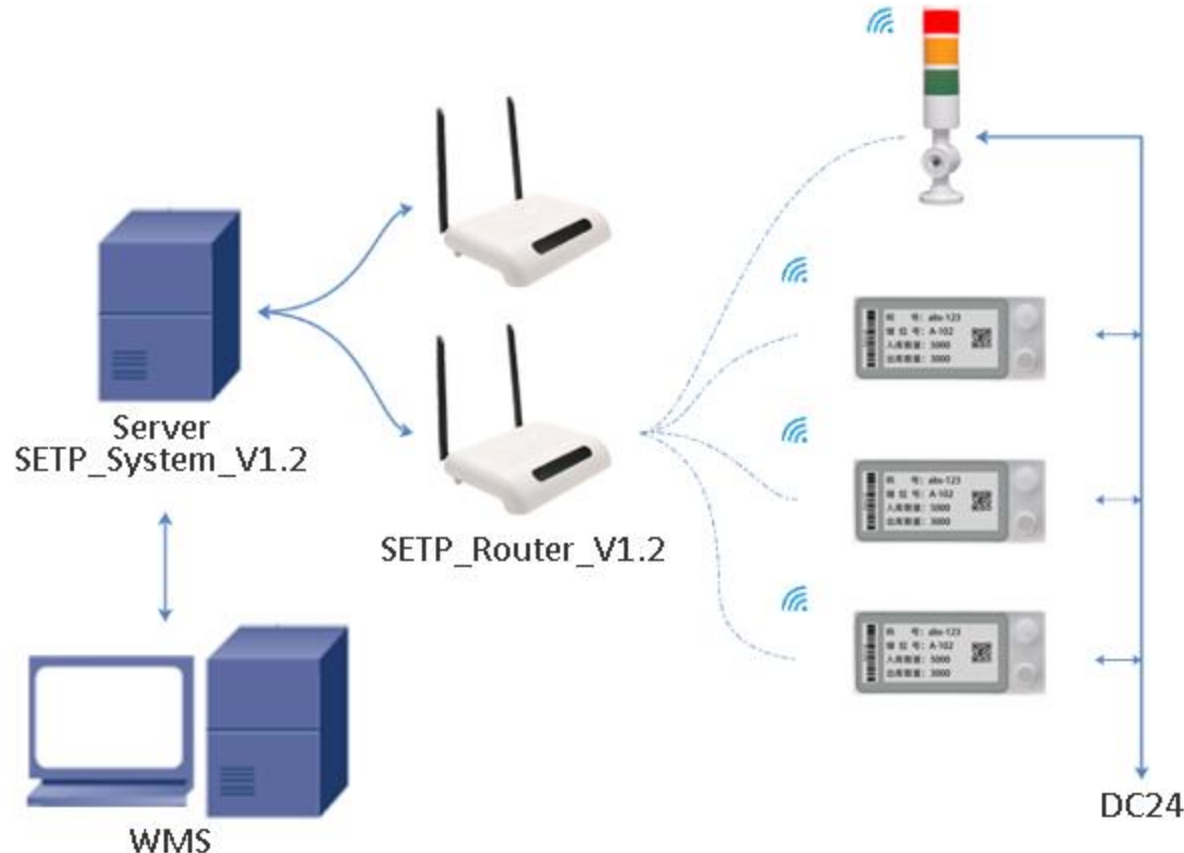
Model	SETP_Label_V13
Dimension	70x34.7x13.6mm
Screen Size	2.1 inch
Resolution	250*122
Pixel Density	130dpi
Display Technology	Full Graphic E ink Display
Pixel Color	Black & White
Case Color	Black
Button	1 Buttons
Indicator Light	1 RGB Lights
LED Color	7Colors(Red/Green/Blue/Yellow/purple/white/cyan)
Working Temperature	0~50°C
Operating Frequency	868MHz
Viewing Angle	Nearly 180°
Displayable content	Text/Picture/Barcode/QRcode
Power	Battery Power
Battery	2200mAh(CR2477*2),Replaceable
Battery Lifetime	>2year (10 times per day)
Communication Mode	Wireless
Compliance	CE, RoHS
Wireless Firmware Update	Yes
Template design DIY	Yes
Mounting Type	Rail Mounting
Communication equipment	Controller: SETP_Router_V1.4/ SETP_Router_V1.2

Electronic Pick Tag

SETP_Label_V13 (External Power Supply)

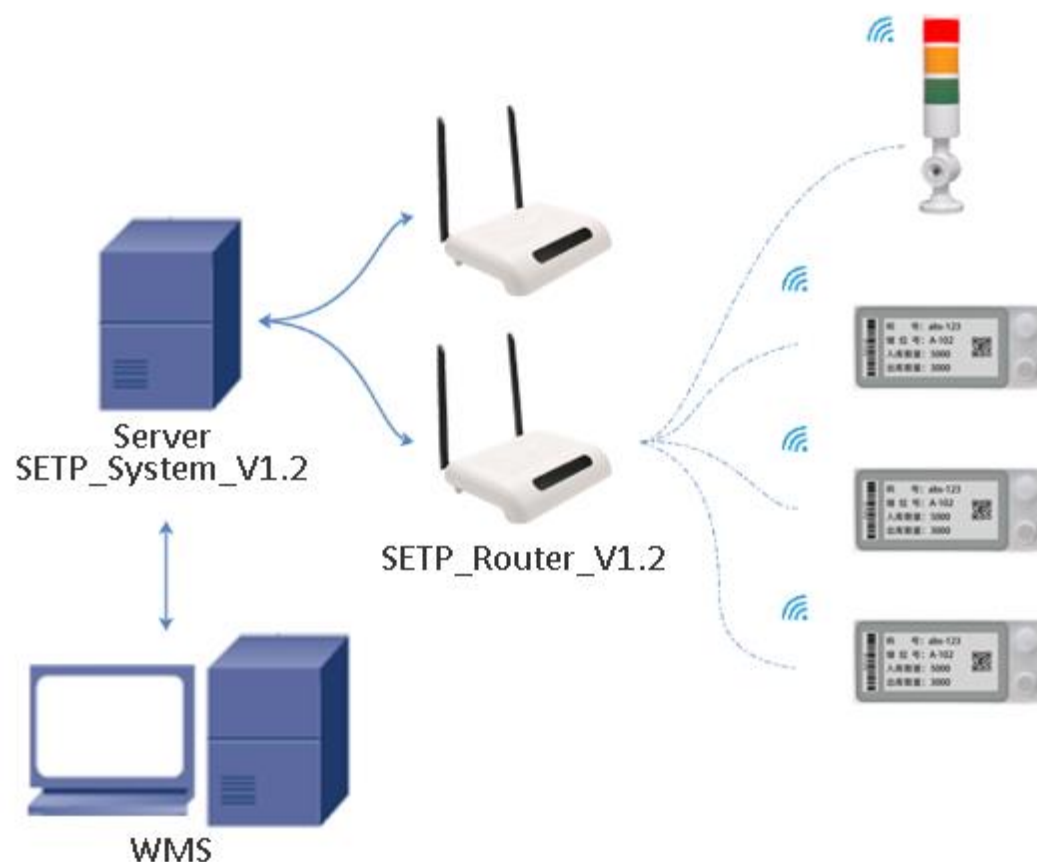
Model	SETP_Label_V13
Dimension	70x34.7x13.6mm
Screen Size	2.1 inch
Resolution	250*122
Pixel Density	130dpi
Display Technology	Full Graphic E ink Display
Pixel Color	Black & White
Case Color	Black
Button	1 Buttons
Indicator Light	1 RGB Lights
LED Color	7Colors(Red/Green/Blue/Yellow/purple/white/cyan)
Working Temperature	0~50°C
Operating Frequency	868MHz
Viewing Angle	Nearly 180°
Displayable content	Text/Picture/Barcode/QRcode
Power	DC 24V
Battery	2200mAh(CR2477*2)
Battery Lifetime	>2year (10 times per day)
Communication Mode	Wireless
Compliance	CE, RoHS
Wireless Firmware Update	Yes
Template design DIY	Yes
Mounting Type	Rail Mounting
Communication equipment	Controller: SETP_Router_V1.4/ SETP_Router_V1.2

System Structure V1.2(External Power Supply)

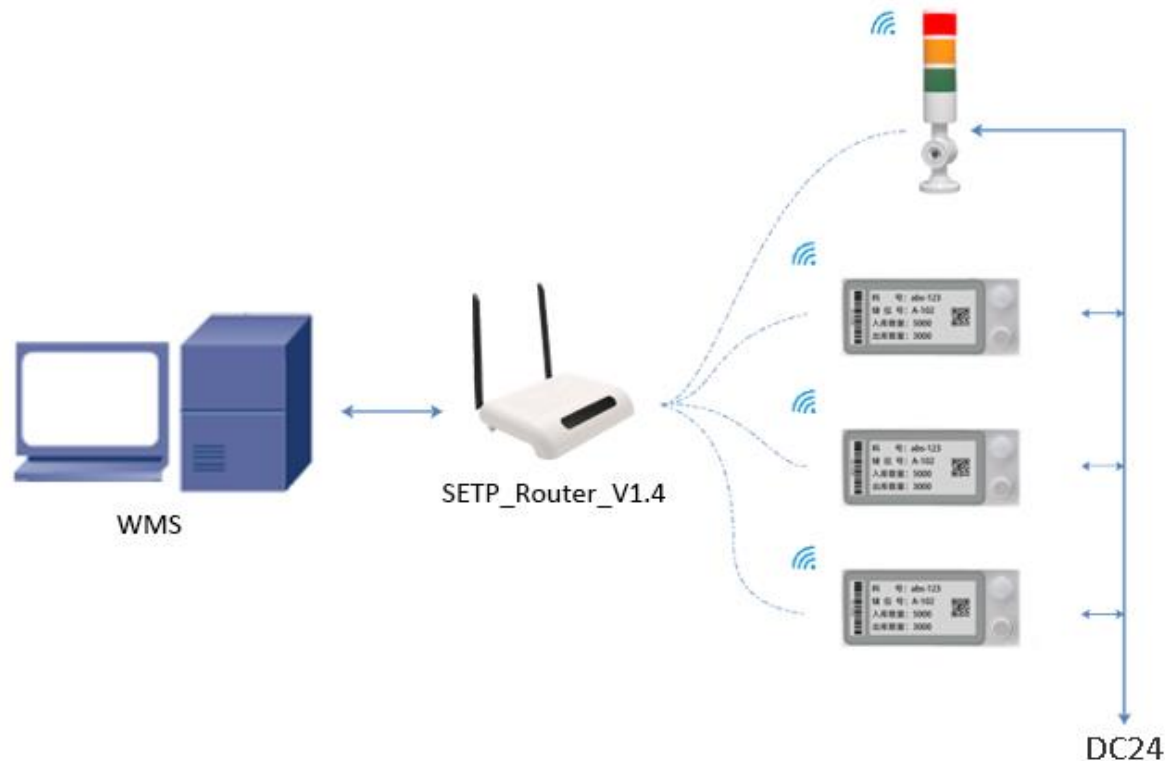


The electronic label picking system sends instructions through a PC or scanner, forwards them through a router, and controls the LED lights or screens on the electronic labels to guide the pickers to accurately and quickly pick the corresponding goods at the designated location.

System Structure V1.2(Battery Supply)

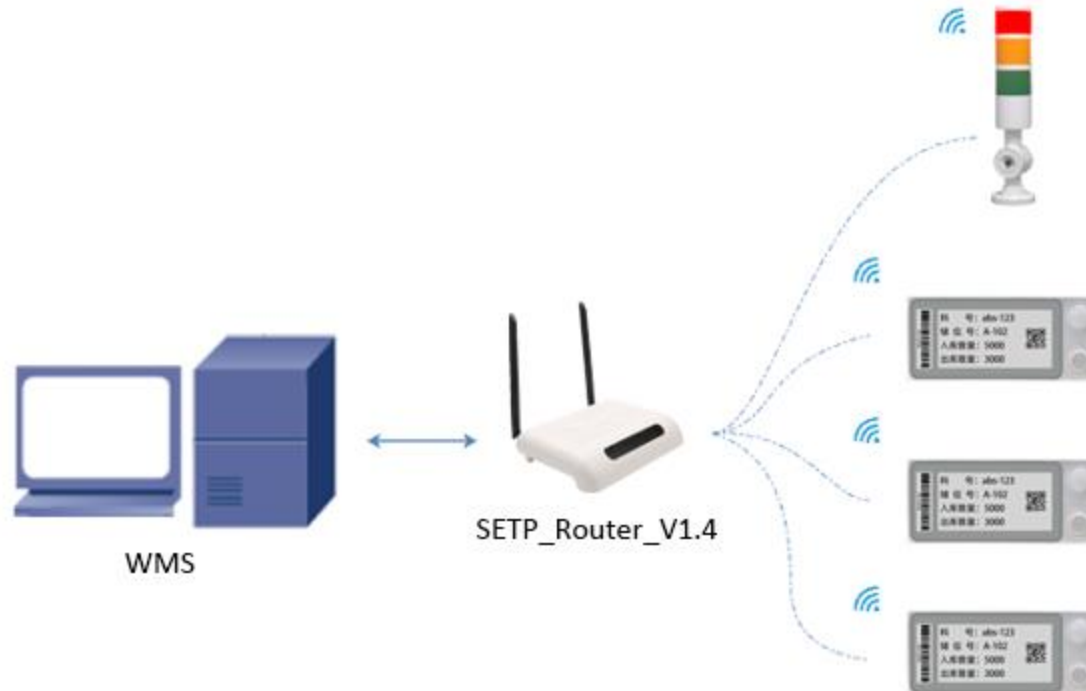


System Structure V1.4(External Power Supply)



Note: The V1.4 version of the base station has a built-in server program. Users only need to send operating instructions to the base station to realize data transfer, making it easier to use.

System Structure V1.4 (Battery Supply)



Power Supply Type

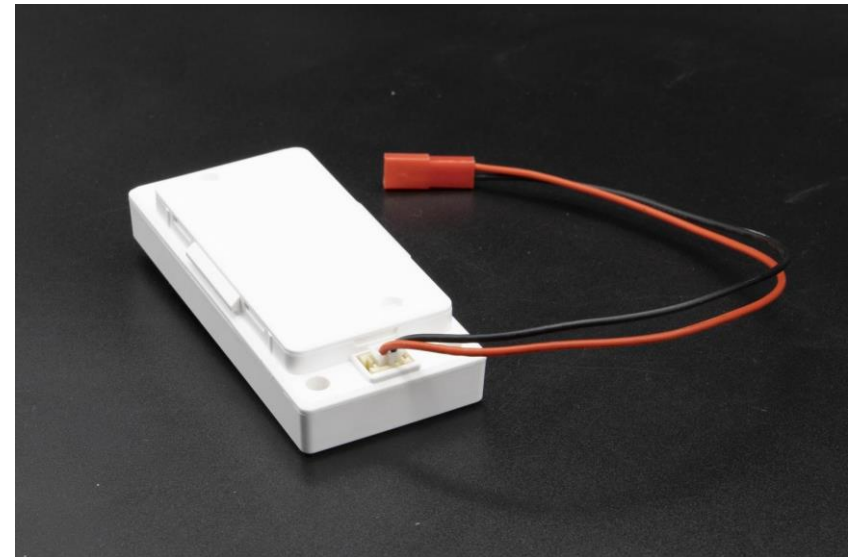
Two power supply modes:

1. Powered by button battery pack (battery version)



CR2477x2 power supply, voltage 3V

2. DC24V external power supply (external power supply version)



Installation Method



1. Paste and fix



2. Magnetic fixation

3. Track groove fixation (can be customized)

Corresponding slot size 34.5*66.5mm



Physical Display

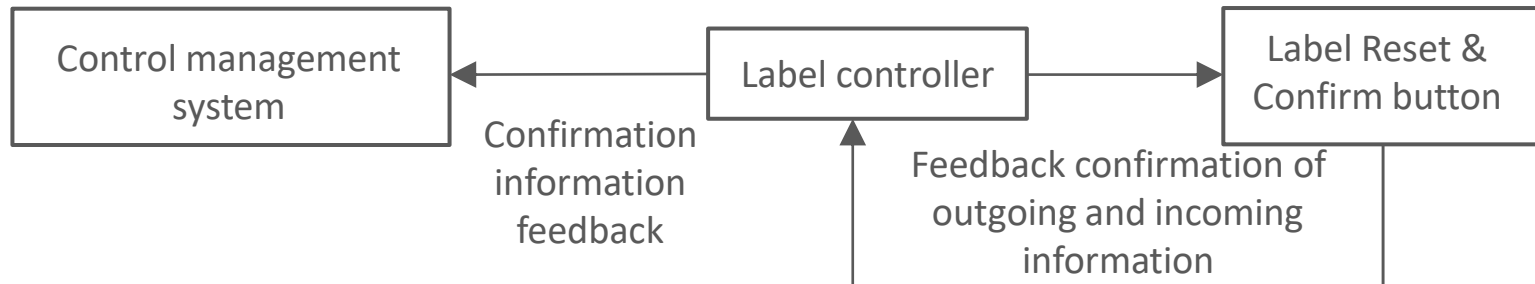


Front



Back

Button Control Flow



Button function description:



SETP_Label_V13 has only one button

Function 1: Confirm button to confirm the completion of the outgoing and warehousing, and the information is fed back to the upper control management system;

Function 2: It is a registration button. Pressing this button three times in succession will register the label information to the server;

Function 3: It is a custom function button. After pressing the button, the system will feedback the button action to the control management system. The system can customize the function application as needed.

Router

Receive the operation instructions issued by the PC, analyze them and then send them to the electronic tag through RF.

- Wireless communication distance 30m
- Wireless communication rate 200kbps
- Network communication rate 10/100 Mbps
- Custom two-way data communication protocol to ensure data transmission speed and accuracy
- There is no upper limit for covering electronic labels
- Supports synchronization of multiple routers
- Parallel communication, safe and fast
- Omnidirectional transmission, no dead ends
- Support online software upgrade
- Operating system: linux
- Supports POE power supply or external DC12V power supply



Tag controller

Model: SETP_Router_V1.2

The V1.2 base station has an independent routing function and needs to cooperate with the label server.

Model: SETP_Router_V1.4

The V1.4 version base station comes with its own server program and can directly accept instructions.

Tower Light with Buzzer

Wirelessly receive the data information sent by the router and analyze it, make corresponding instructions and cooperate with the picking lane prompts.

- Used with label picking
- All three lights (red, yellow and green) can be controlled independently
- Wireless communication 868M, frequency hopping communication
- Communication rate 50K
- Covering a communication radius of more than 30 meters
- Multi-color LED highlight indicator light
- 24V external DC power supply, maximum current <0.2A
- Built-in buzzer, controllable by command

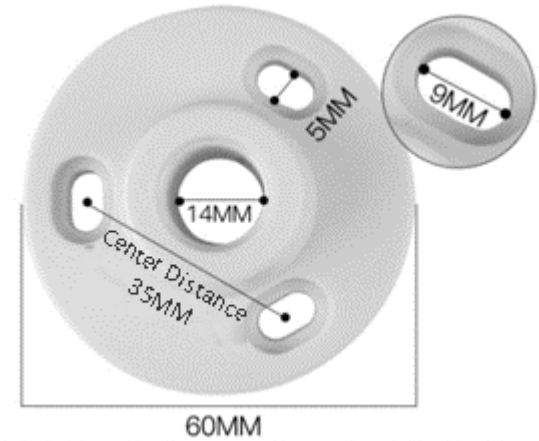
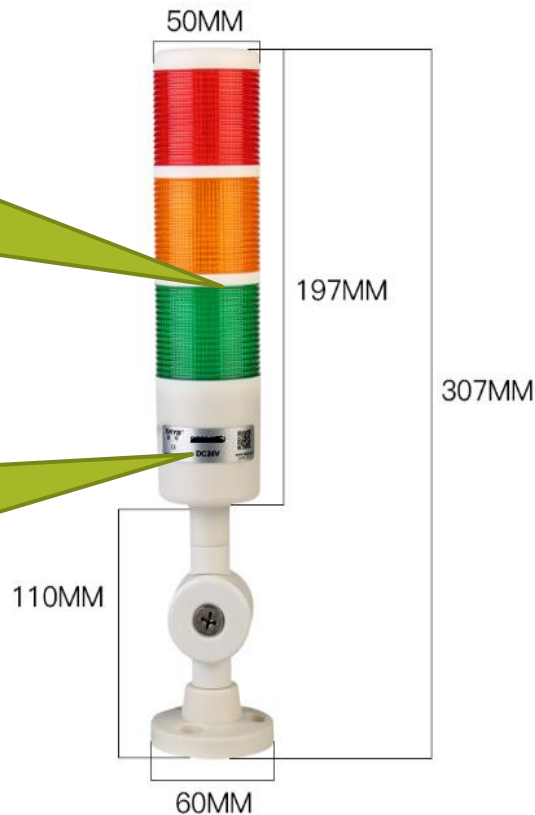


Tower Light with Buzzer
Model: SETP_Label_V9

Tower Light with Buzzer

All three lights can
be controlled
independently

Magnetic
proximity
triggers
registration



DC5.5 * 2.1
Power supply DC24V, <0.2A

Manual

Initial: Set the server and label parameters

Step 1: The customer sends the picking information to the label server

Step 2: The server parses the command requirements and wirelessly lights up the tunnel lights and tags

Step 3: Pick items according to the illuminated label and press the confirmation button to turn off the light, and the screen content is updated with the result after the operation.

Multifunctional Operation Interface

Through the background management interface, comprehensive management, control and operation of information are achieved.

- Multi-account management background
- Web-based software, you can remotely control tags by entering the URL
- Real-time viewing of base station and tag status
- Label display style template customization
- Import user product data table
- Quick screen refresh and lighting operations
- Simple docking interface (HTTP & Json)
- System software supports cloud and local private server deployment

Contact information

Dalian Sertag Technology Co., Ltd

Experience the power of a solution that's uniquely yours. Let's collaborate and create a tailor-made pick to light system that transforms the way you work.

- Email: sales@sertag.com
- Tel: 86-13664268735 / 86-411-84641910
- WhatsApp: +86 13664268735
- Skype: epaperlabel@hotmail.com
- Website: www.eslmfg.com
- www.lightpicksystems.com

