


7.5-inch WiFi Electronic Tag SETPW0750R_V1 User Manual

DALIAN SERTAG TECHNOLOGY CO., LTD

Sertag

7.5 inch Wi-Fi ESL SETPW07050R_V1

| TECHNICAL DETAILS | Product code | SETPW07050R_V1 |
|---|--------------------------|--|
|  | Dimensions (mm) | 180*130*13mm |
| | Display technology | 3-color E ink display |
| | Active display area (mm) | 163.2(H) * 97.92(V) |
| | Resolution (pixels) | 800*480 |
| | Pixel size (mm) | 0.204*0.204 |
| | Pixel colors | Black/White/Red |
| | Viewing angle | Nearly 180° |
| | Working temperature | 0 - 40°C |
| | Product weight | 200g |
| | Battery | 3000mAh(Rechargeable polymer batteries) |
| | Power | Type-C interface charging |
| | Battery lifetime | Up to 1year of autonomy on a single charge |
| | Lights and Buttons | 1 × 3 color LED & 1key |
| | Communication mode | wifi b/g/n |
| | Support content format | Text/Picture/QR code/Barcode |
| | Wireless firmware update | Yes |
| Support remote control | Yes | |
| Interface interconnection | Yes | |

Product Installation Method

| Installation Method | Picture |
|---------------------|--|
| Desktop Stand |  |
| Adhesive Bracket |  |
| Lanyard hole |  |

Device registration process:



Key: Register key

Back hole: Reset key

Long press the button still, the green light, the pin under the back hole, wait for the green flash, you can release the button, the blue light flashes slowly, the device can enter the configuration registration mode.

Log in to the WiFi label management system :

<http://192.144.234.153:8000/index>

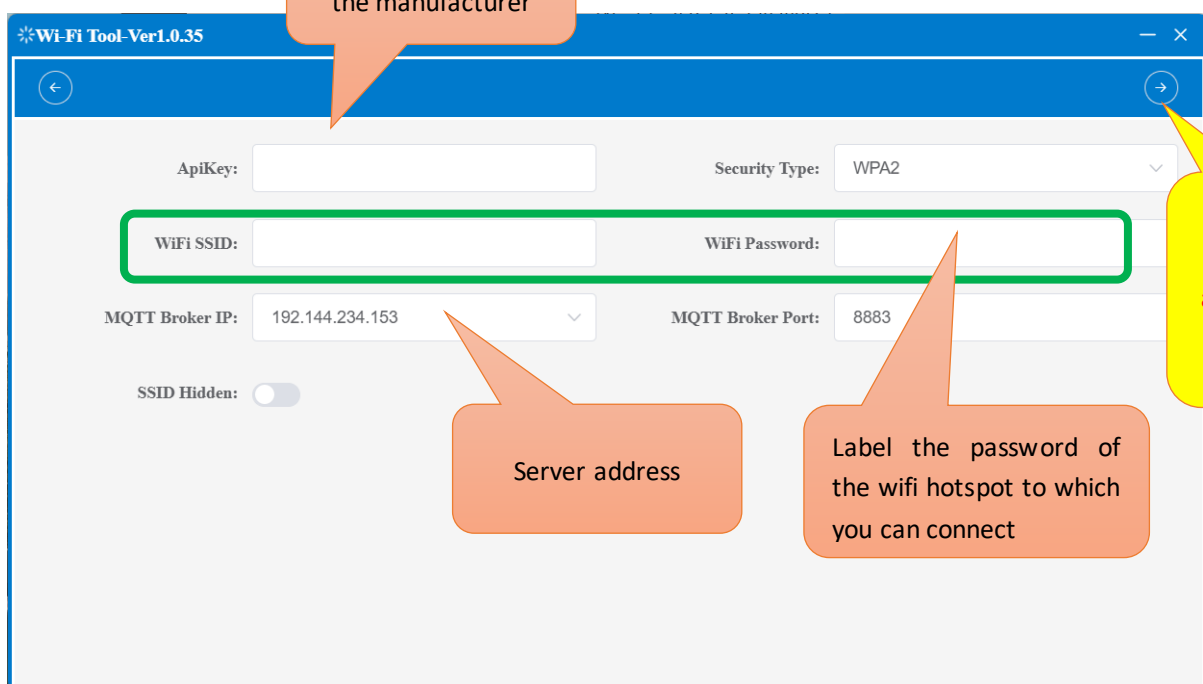
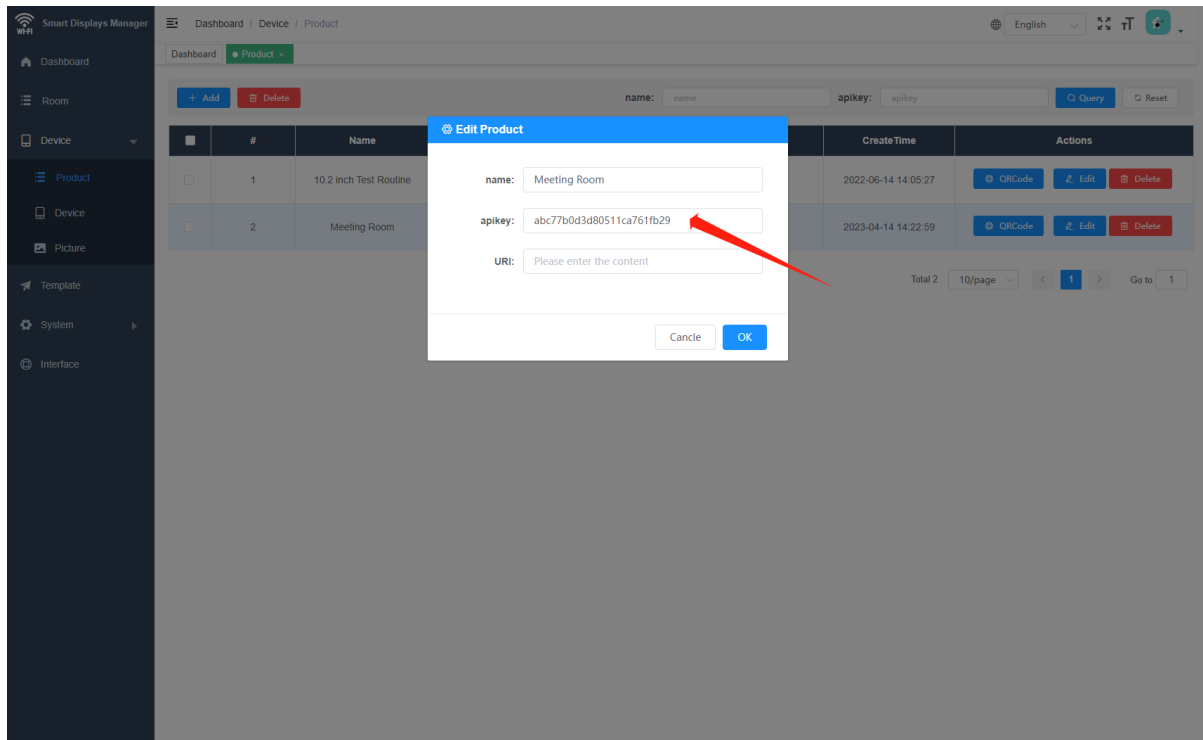
Test account: user1080 Cipher: 123456 (For test use only)



Download software package:

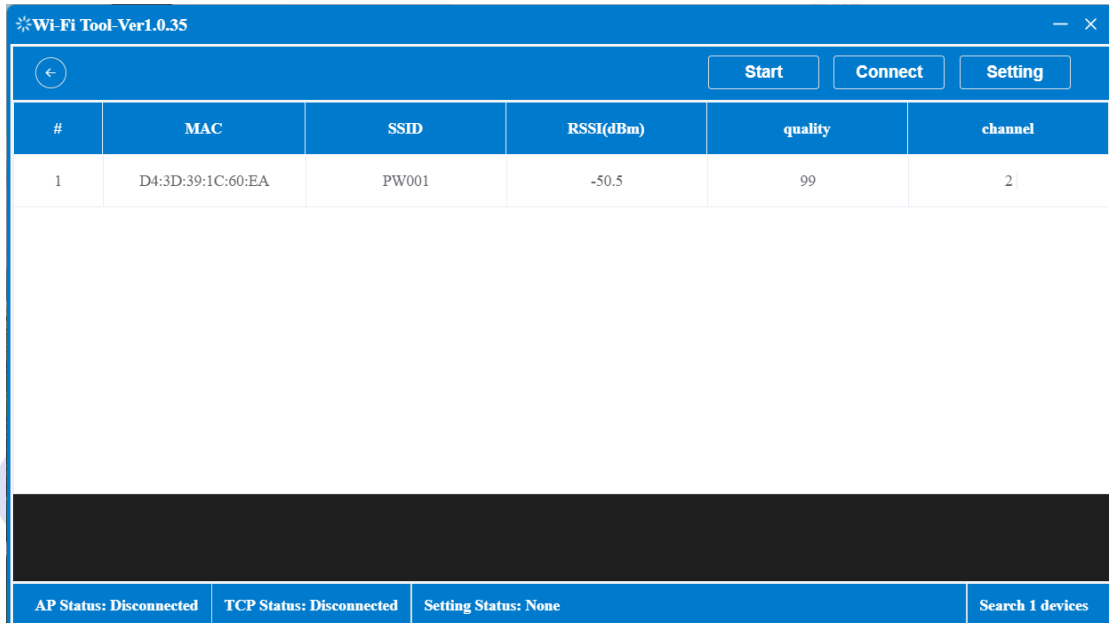
<http://a.picksmart.cn:8088/picksmart/app/WiFi-Tool-Setup-V1.0.37.zip>

1. Log in the system to Device Management-Product management, copy the value of [product KEY], go to [wifi-tools] software tool, fill in the parameters and go to the next step;



Note: Laptop is recommended if the computer has WIFI connection, with wireless card

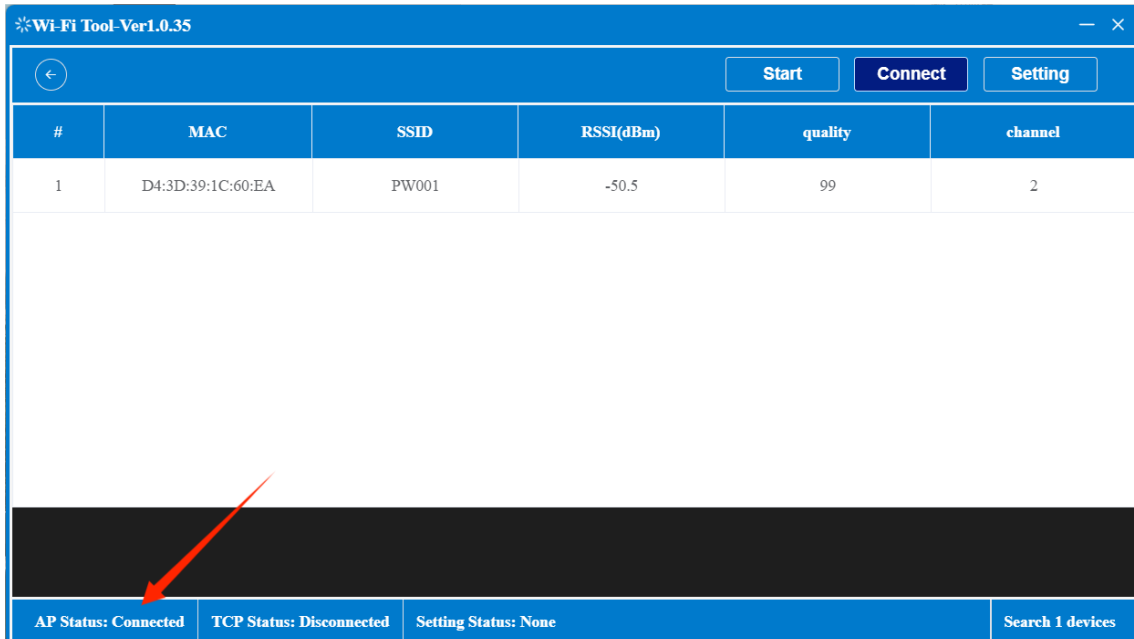
2. Click [Start Search], the MAC address of the product device is displayed successfully, and the green light blinks slowly;



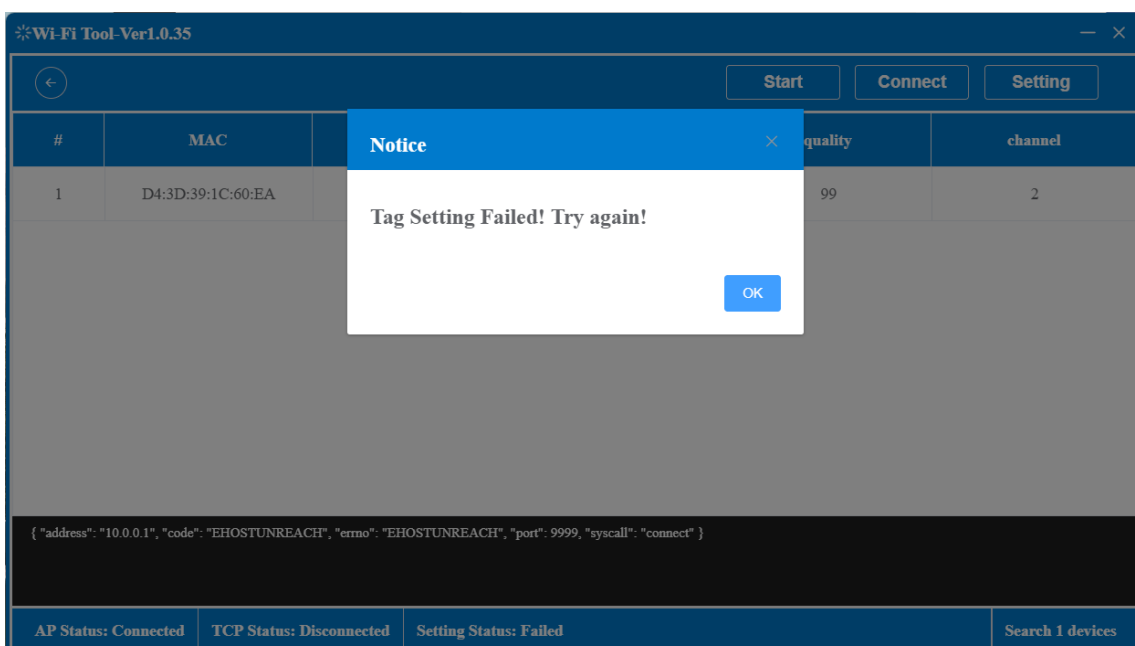
Note: If you can't find it, click the WIFI in the lower right corner of the computer to refresh



3. Click Connect Device. AP connection status in the lower left corner: Connect, indicating that the device is connected.



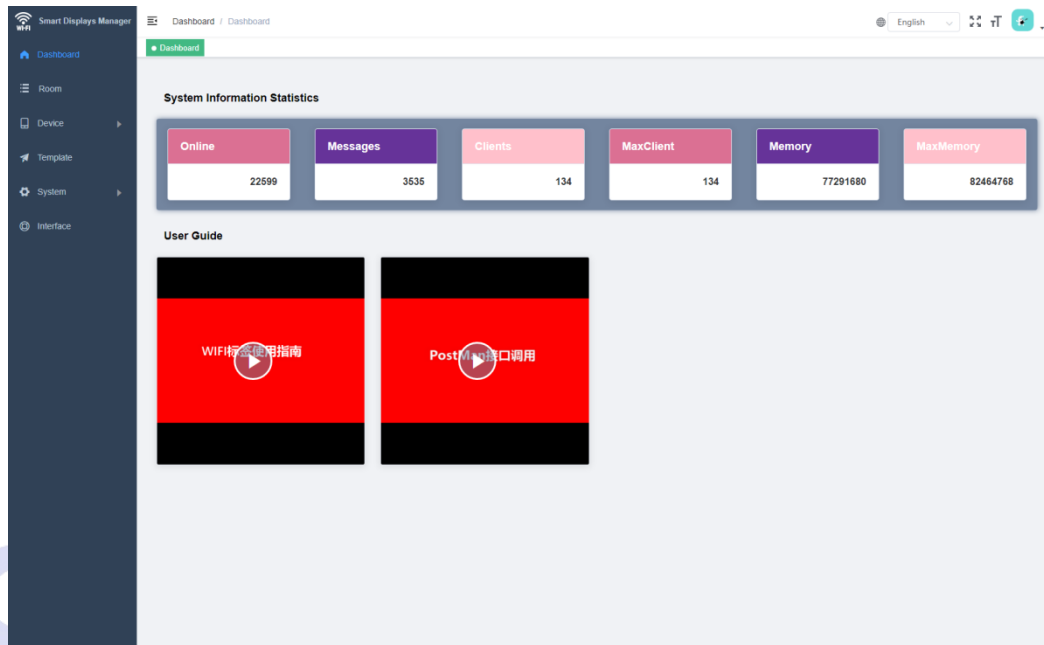
4. Click [Set parameters], the lower left corner of the TCP connection status: connection, pop up the label setting successful prompt, indicating that the device parameters successfully registered, the green light will blink a few times faster, and the indicator will automatically turn off.



Operation process:

<http://192.144.234.153:8000/index>

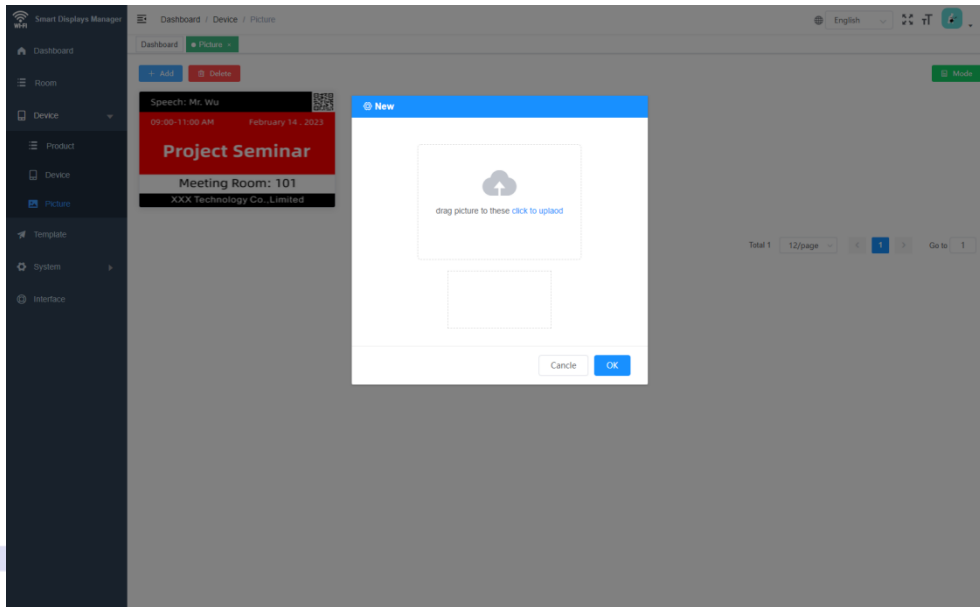
- ① Click the URL link to log in to the WiFi label management system



- ② Template Management - New, select the screen resolution
- ③ Template editing, select the device MAC address parameters, click the screen to refresh the screen



- ④ Als het sjabloon in andere software wordt gemaakt, moet de resolutiegrootte van het bijbehorende label worden ingesteld
- ⑤ Device management - Image management - New, upload image template



- ⑥ Press the K key in the base of the product, and the MAC address of the device will be displayed in the lower right corner. Copy the parameters to the MAC address search device managed by the device, and click the Settings screen to refresh the uploaded image template

