

2024

Wi-Fi Electronic Tag User Manual

DALIAN SERTAG TECHNOLOGY CO., LTD

The Wi-Fi Label Registration Process:

Wi-Fi table card



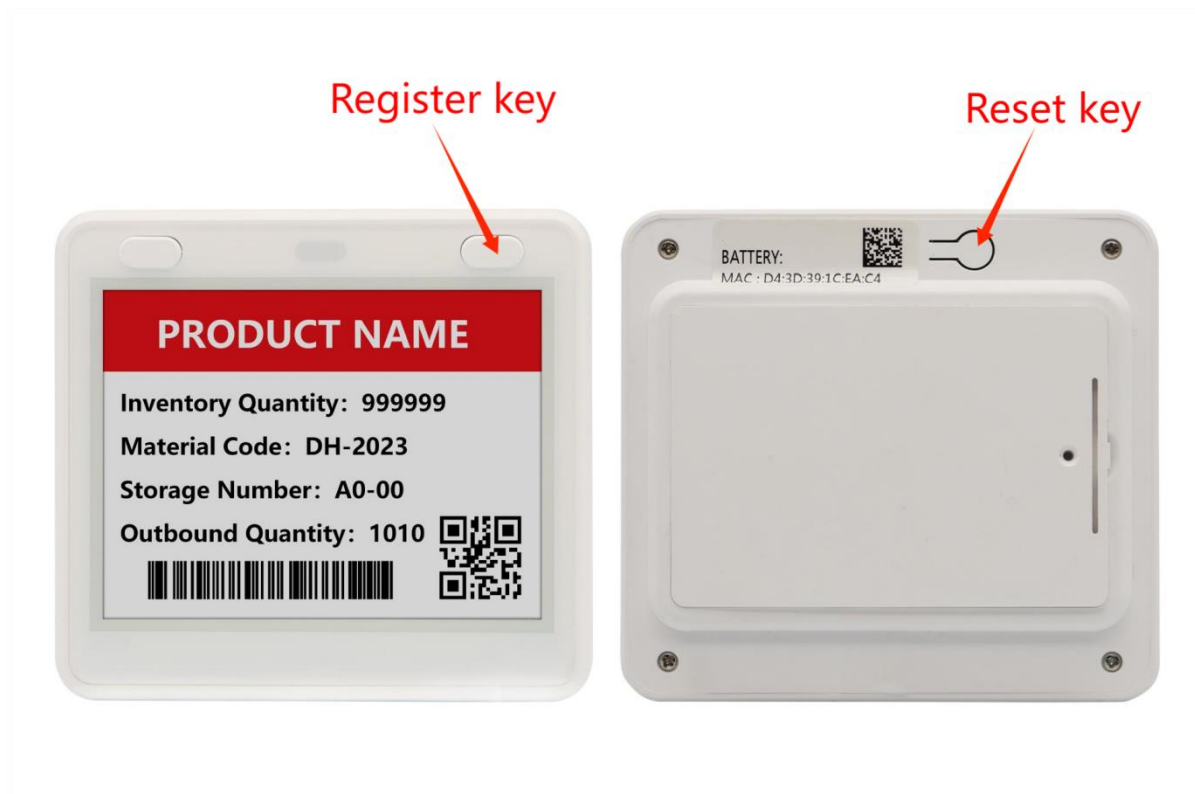
K: Register key

SMART TAG LEADER

R: Reset key

Press the K key for a long time and the green light will be on for a long time. Press the R key again and release the key after the green light flashes quickly. When the green light flashes slowly, the device can enter the configuration registration mode.

4.2-inch Wi-Fi label



Right key: Register key

Back key: Reset key

Long press the right button, the green light, then press the back reset button, wait for the green flash, you can release the button, the blue light flash slowly, the device can enter the configuration registration mode.

4.2-inch Wi-Fi label



Big key: Register key

Back hole: Reset key

Long press the button still, the green light, the pin under the back hole, wait for the green flash, you can release the button, the blue light flashes slowly, the device can enter the configuration registration mode.

The 7.5/10.2/13.3-inch Wi-Fi label



Key: Register key

Back hole: Reset key

Long press the button still, the green light, the pin under the back hole, wait for the green flash, you can release the button, the blue light flashes slowly, the device can enter the configuration registration mode.

Log in to the WiFi label management system :

<http://192.144.234.153:8000/index>

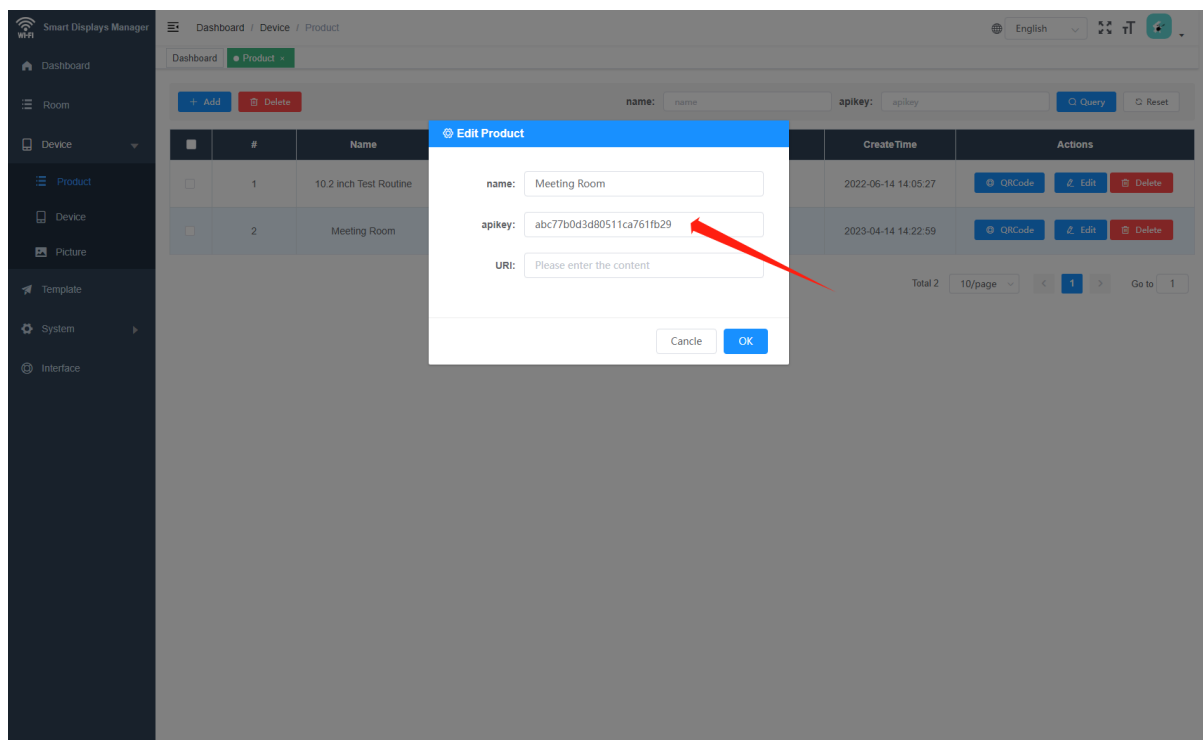
Test account: user1080 Cipher: 123456 (For test use only)

Download software package:

<http://a.picksmart.cn:8088/picksmart/app/WiFi-Tool-Setup-V1.0.37.zip>



1. Log in the system to Device Management-Product management, copy the value of [product KEY], go to [wifi-tools] software tool, fill in the parameters and go to the next step;



The screenshot shows the configuration interface of the Wi-Fi Tool. The fields and their corresponding callouts are:

- ApiKey:** A text input field with a callout: "ApiKey Supplied by the manufacturer".
- Security Type:** A dropdown menu set to "WPA2".
- WiFi SSID:** A text input field highlighted with a green border, with a callout: "Fill in the parameter and proceed to the next step".
- WiFi Password:** A text input field with a callout: "Label the password of the wifi hotspot to which you can connect".
- MQTT Broker IP:** A dropdown menu set to "192.144.234.153" with a callout: "Server address".
- MQTT Broker Port:** A text input field set to "8883".
- SSID Hidden:** A toggle switch currently turned off.

Note: Laptop is recommended if the computer has WIFI connection, with wireless card

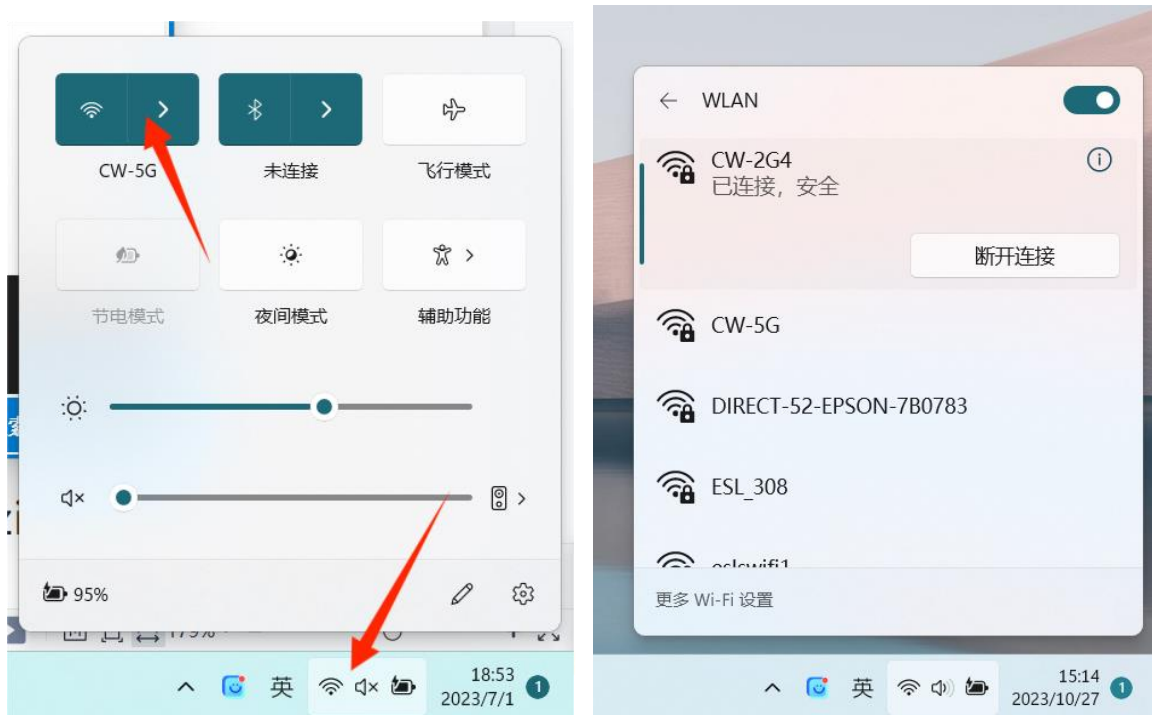
2. Click [Start Search], the MAC address of the product device is displayed successfully, and the green light blinks slowly;

The screenshot shows the search results interface of the Wi-Fi Tool. The interface includes a table with the following data:

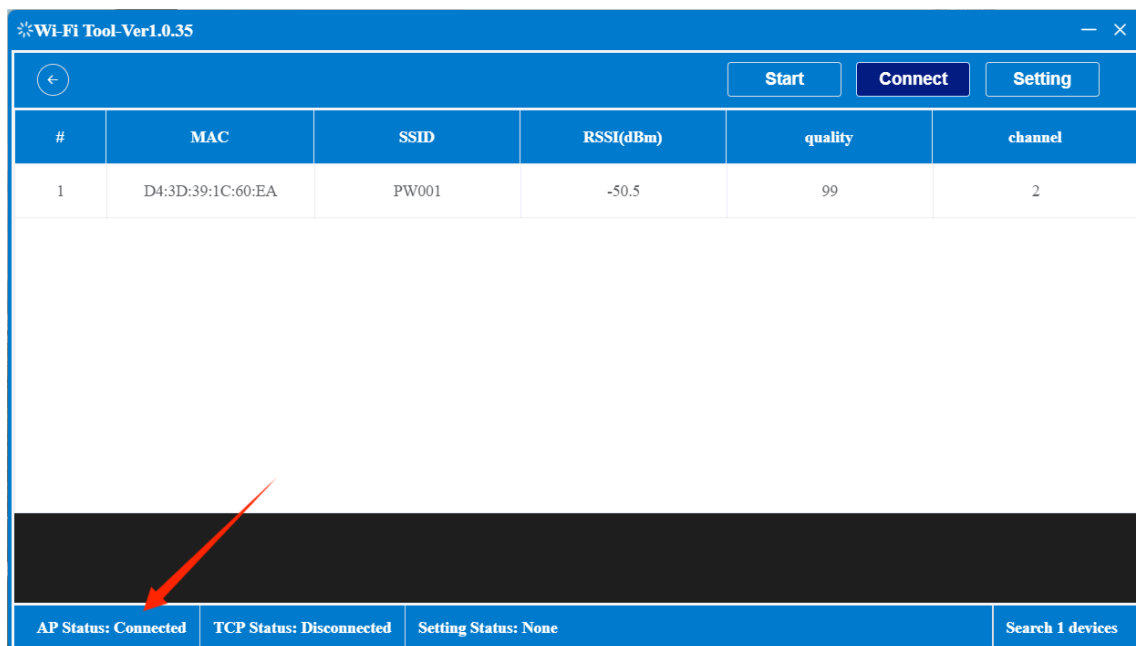
#	MAC	SSID	RSSI(dBm)	quality	channel
1	D4:3D:39:1C:60:EA	PW001	-50.5	99	2

At the bottom of the interface, there are status indicators: AP Status: Disconnected, TCP Status: Disconnected, Setting Status: None, and a search count: Search 1 devices.

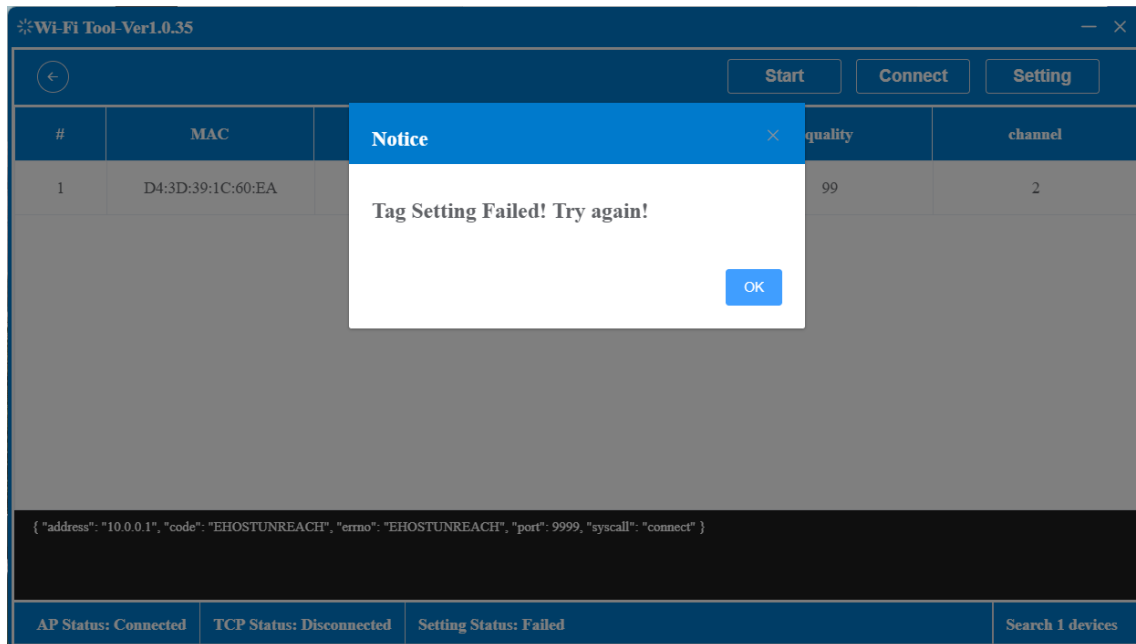
Note: If you can't find it, click the WIFI in the lower right corner of the computer to refresh



3. Click Connect Device. AP connection status in the lower left corner: Connect, indicating that the device is connected.



4. Click [Set parameters], the lower left corner of the TCP connection status: connection, pop up the label setting successful prompt, indicating that the device parameters successfully registered, the green light will blink a few times faster, and the indicator will automatically turn off.

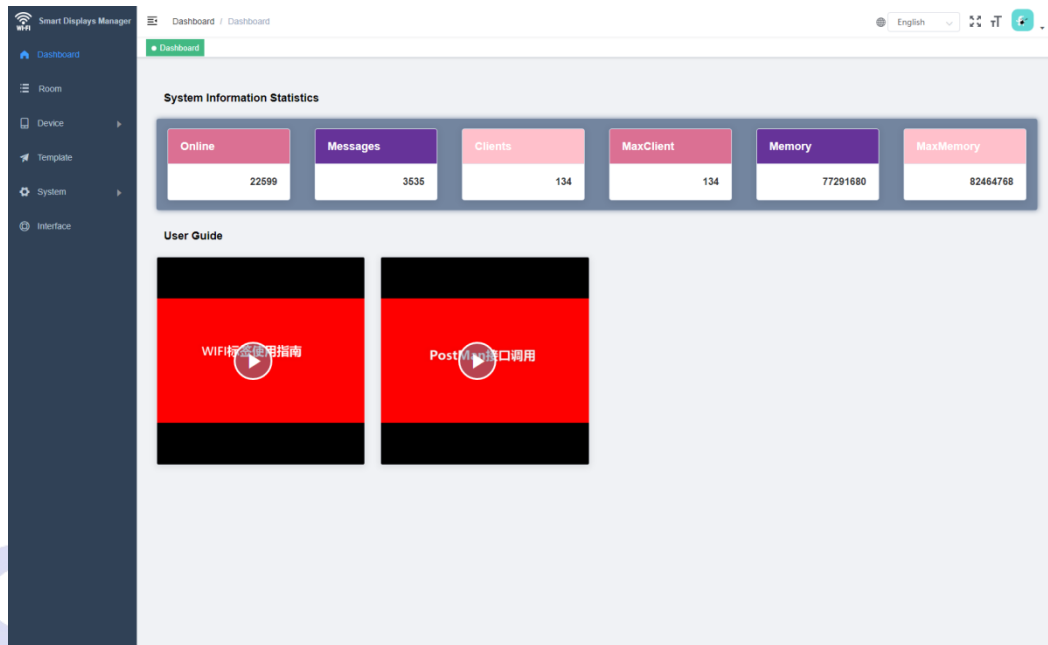


SMART TAG LEADER

Operation Process:

<http://192.144.234.153:8000/index>

- ① Click the URL link to log in to the WiFi label management system

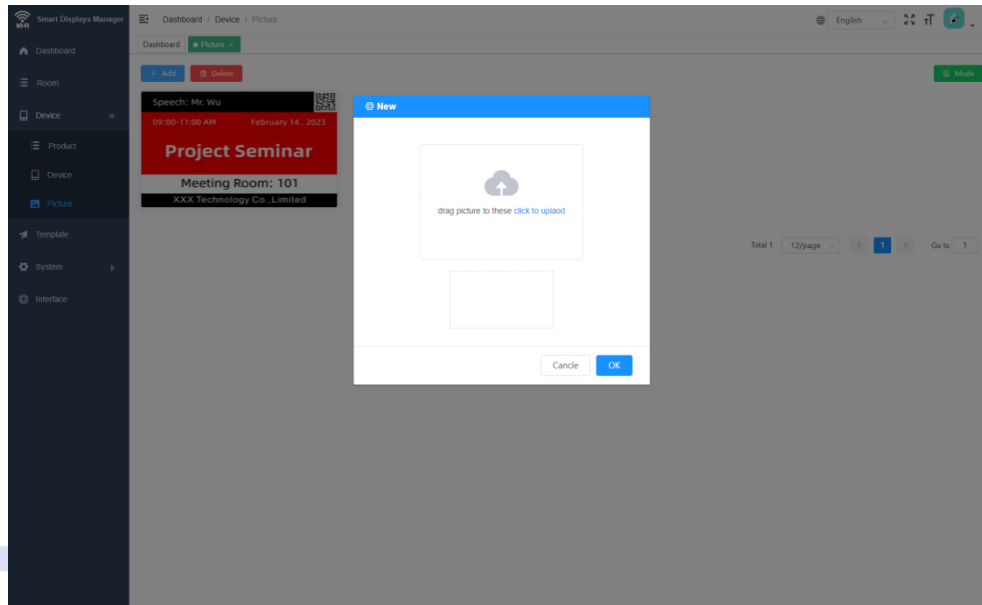


- ② Template Management - New, select the screen resolution
- ③ Template editing, select the device MAC address parameters, click the screen to refresh the screen



④ Als het sjabloon in andere software wordt gemaakt, moet de resolutiegrootte van het bijbehorende label worden ingesteld

⑤ Device management - Image management - New, upload image template



⑥ Press the K key in the base of the product, and the MAC address of the device will be displayed in the lower right corner. Copy the parameters to the MAC address search device managed by the device, and click the Settings screen to refresh the uploaded image template

