

# Pick To Light System

## ---SETP\_Label\_V3

Pick to Light

E-commerce  
Warehouse



Intelligent  
Manufacturing



Intelligent  
Warehousing



## Innovation Point



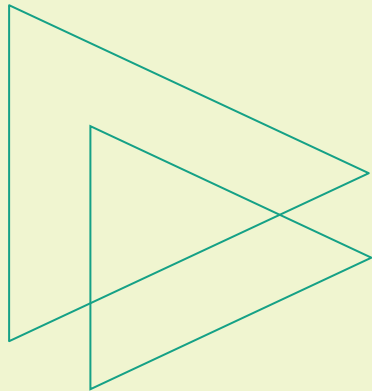
- 2.9 inch e-ink screen display
- Wireless communication
- Buttons and three-color high-brightness LED indicator
- 296\*128 dot matrix screen
- Supports 24V external power supply/ battery power supply
- DIY interface supports text/barcode/QR code
- Ultra-low power consumption

# Summary of picking system

The electronic label picking system is a logistics auxiliary operation system developed using advanced electronic technology and communication technology. It is usually used in the sorting process of warehousing or modern logistics centers. It has the characteristics of fast picking speed, high efficiency, low error rate and paperless , standardized operating characteristics. As an advanced operating method, the electronic label-assisted picking system is more efficient when used in conjunction with a warehouse management system (WMS) or other logistics management systems.

The electronic label picking system is a set of electronic equipment installed on the shelf storage space. It is controlled by computers and software, and uses indicator lights or digital displays as auxiliary tools to guide pickers to complete their work correctly, quickly and easily.

# Characteristics and benefits



Improve operation speed and quality



Easy and fast deployment



Achieve paperless standardized operations



Reduce operator training time



Reduce labor costs, management costs, etc.

# Electronic Pick Tag

Receive and analyze the data information sent by the router, make corresponding instructions, and click the button to complete the picking.

- 2.9 inch E-ink screen
- Comes with 4 buttons
- The label ID is displayed on the front
- Wireless communication 868M, frequency hopping communication
- Communication rate 200K/50K
- Covering a communication radius of more than 30 meters
- Multi-color LED highlight indicator
- Resolution 296\*128, support character, bar code, two-dimensional code display
- Dimensions: 114.5\*44.5\*19mm
- Two power supply modes are available: 1. button battery pack, 2. 24V external power supply
- Custom two-way communication protocol, safe and reliable
- Screen display area: 68\*30mm
- Interface protocol: HTTP & Json



Model: SETP\_Label\_v3

# Button Function

Button 3 is used for registration: register newly installed or replaced tags to the server.

In addition to button functions, 2, 3, and 4 also have lighting functions, highlighting three-color indicator lights.  
**(Exclusive function of external power supply version)**

**Highlight three-color indicator light**

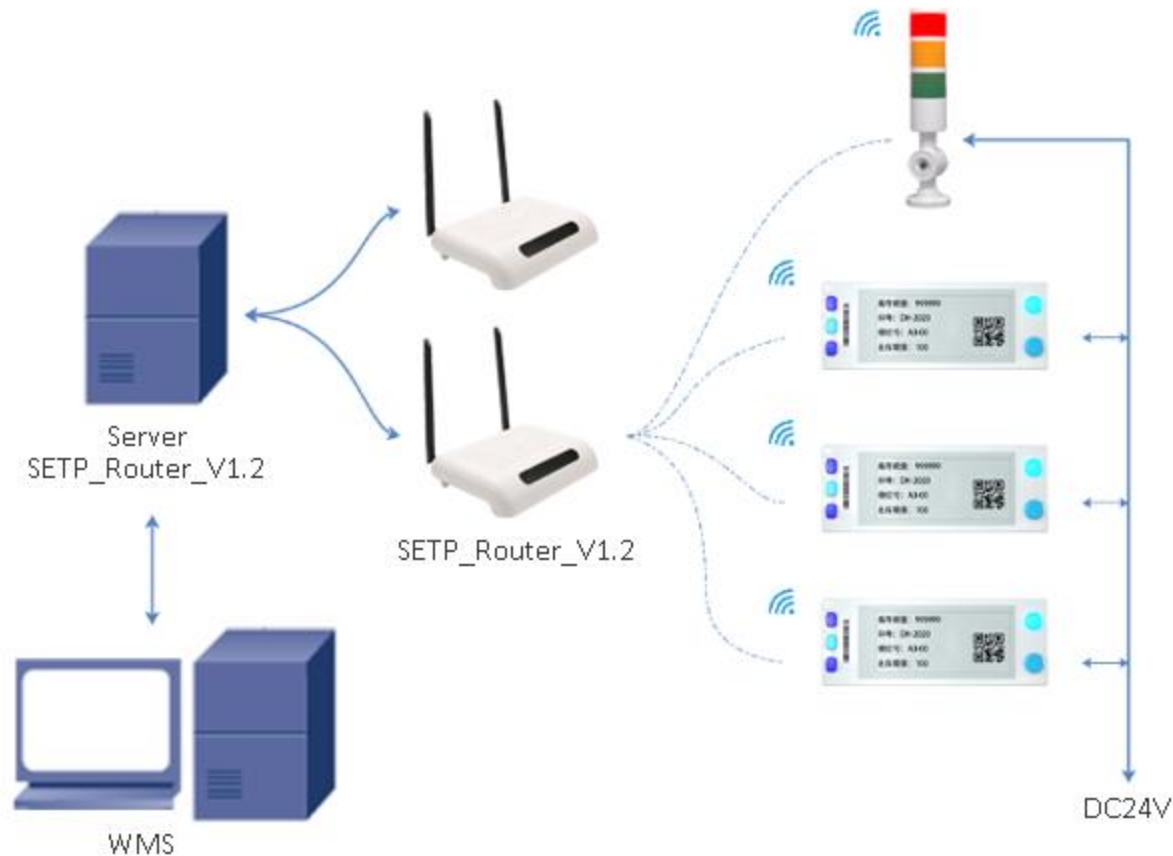


The functions of buttons 2 and 4 can be customized, and the button actions will be fed back to the application system. The application system can be used as customized applications such as out-of-stock reminders, material exceptions, and expiration reminders.

2.9 inch e-ink screen

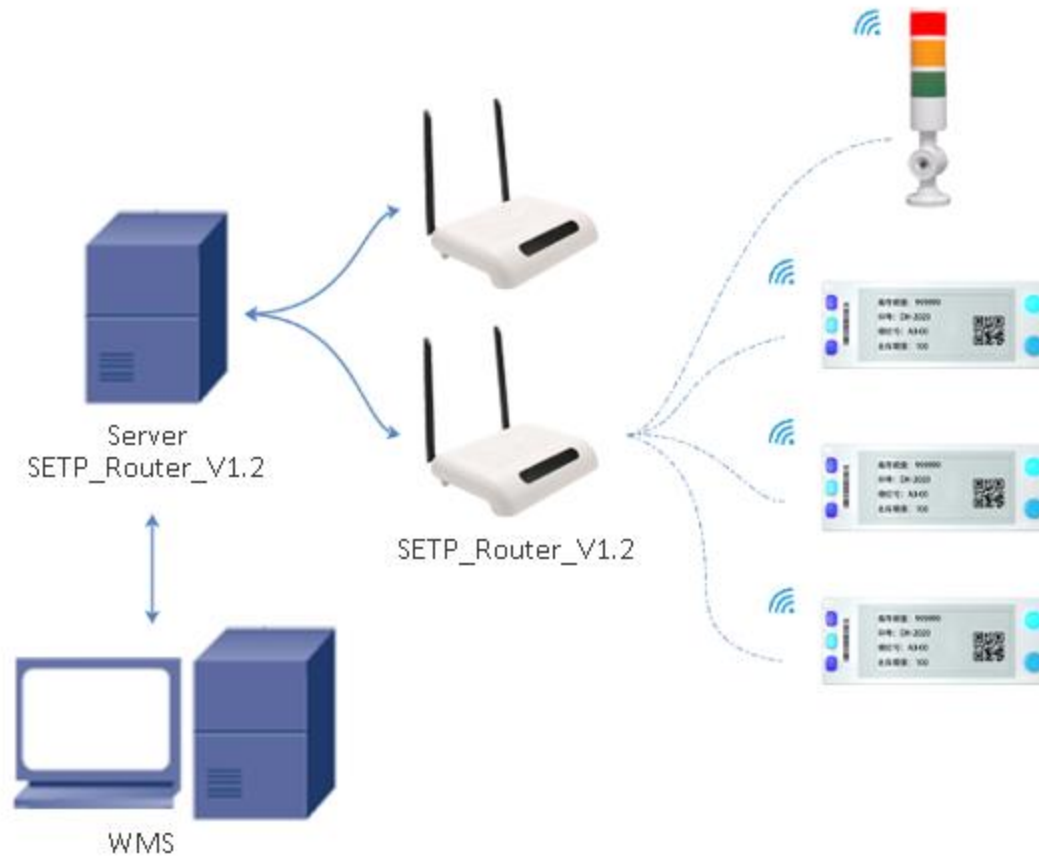
Enter

# System structure V1.2 (External Power Supply)



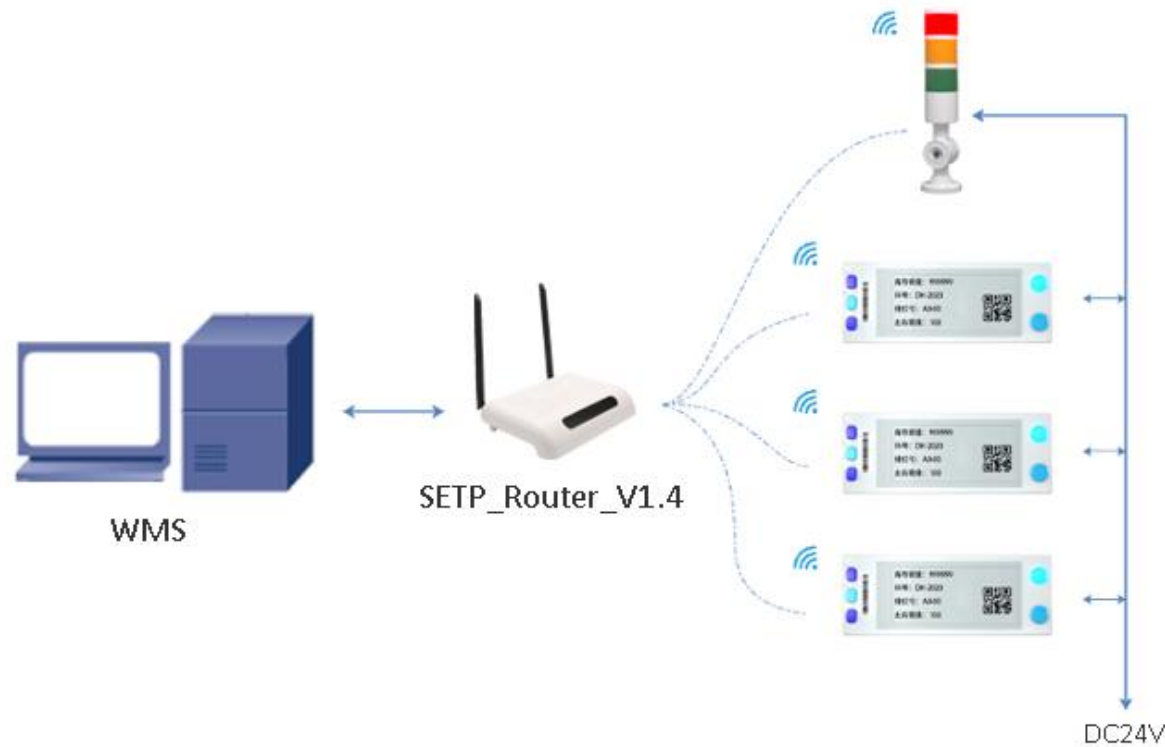
The electronic label picking system sends instructions through a PC or scanner, forwards them through a router, and controls the LED lights or screens on the electronic labels to guide the pickers to accurately and quickly pick the corresponding goods at the designated location.

# System structure V1.2(Batteries Supply)



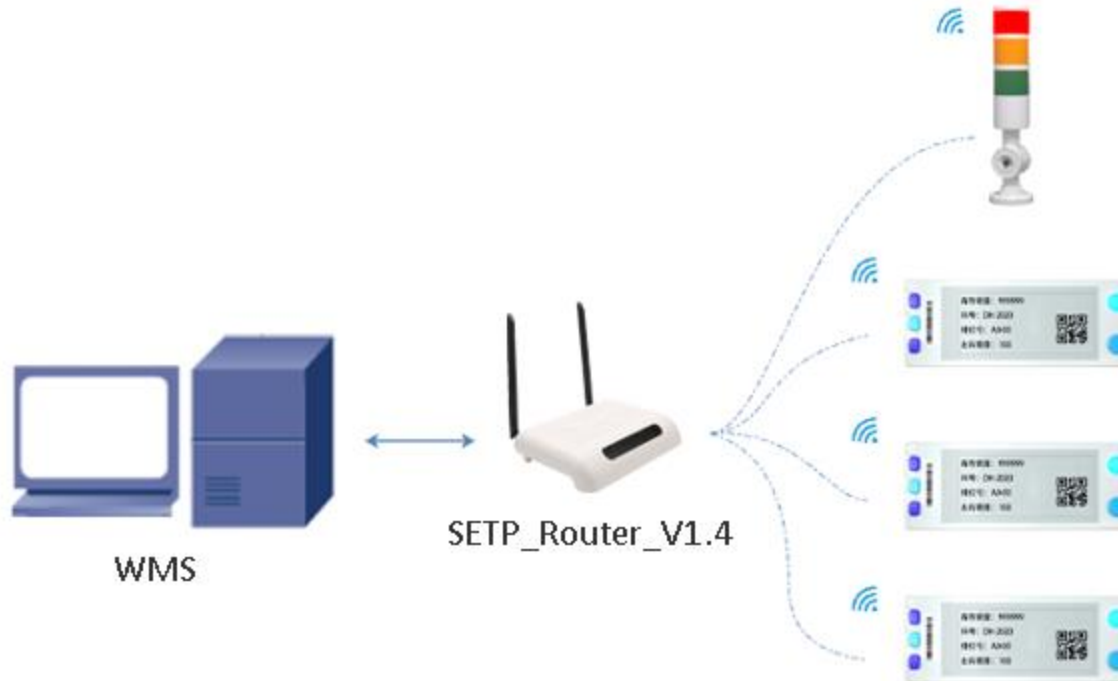


# System structure V1.4(External Power Supply)



Note: V1.4 version of the base station built-in server program, the user only sends the operation instructions to this base station to achieve data transfer, the use is simpler.

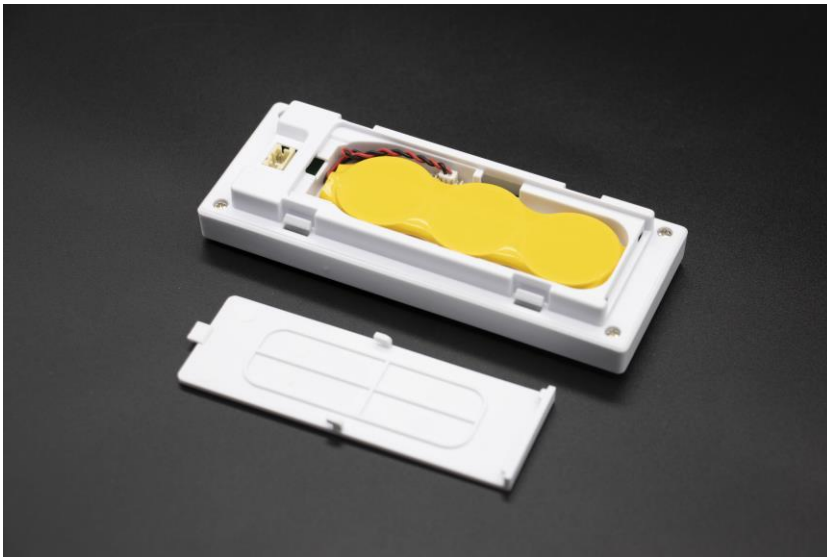
# System structure V1.4 (Batteries Supply)



# Power Supply Type

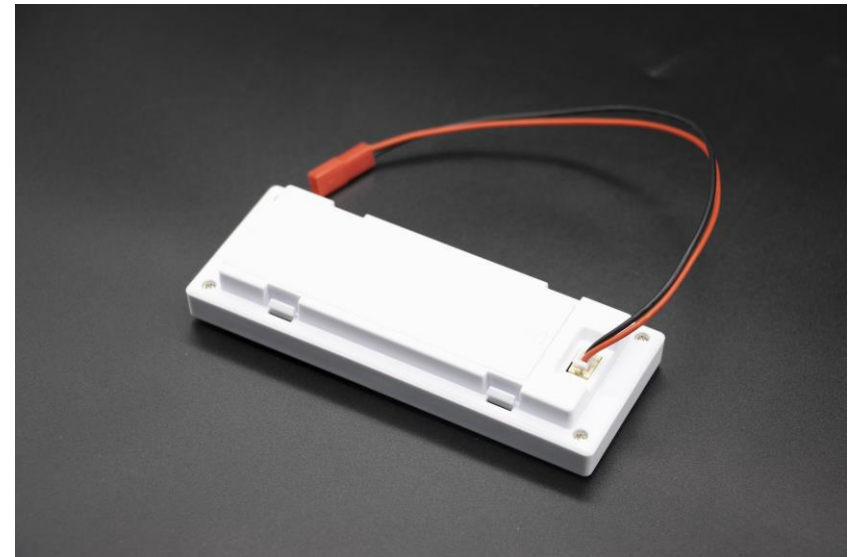
## Two power supply modes:

1. Button battery power supply  
(battery version)



CR2450x3 parallel power supply, voltage 3V

2. DC24V external power supply  
(external power supply version)



# Installation Method



1. Paste and secure



2. Magnetic fixation

3. Track groove fixing (customizable)

Corresponds to the slot size  
34.5\*66.5mm



# Physical Display



Front



Reverse side

# Router

Receive the operation instructions issued by the PC, analyze them and then send them to the electronic tag through RF.

- Wireless communication distance 30m
- Wireless communication rate 200kbps
- Network communication rate 10/100 Mbps
- Custom two-way data communication protocol to ensure data transmission speed and accuracy
- There is no upper limit for covering electronic labels
- Supports synchronization of multiple routers
- Parallel communication, safe and fast
- Omnidirectional transmission, no dead ends
- Support online software upgrade
- Operating system: linux
- Supports POE power supply or external DC12V power supply



Tag controller

**Model: SETP\_Router\_V1.2**

The V1.2 base station has an independent routing function and needs to cooperate with the label server.

**Model: SETP\_Router\_V1.4**

The V1.4 version base station comes with its own server program and can directly accept instructions.

# Tower Light with Buzzer

Wirelessly receive the data information sent by the router and analyze it, make corresponding instructions and cooperate with the picking lane prompts.

- Used with label picking
- All three lights (red, yellow and green) can be controlled independently
- Wireless communication 868M, frequency hopping communication
- Communication rate 50K
- Covering a communication radius of more than 30 meters
- Multi-color LED highlight indicator light
- 24V external DC power supply, maximum current <math><0.2A</math>
- Built-in buzzer, controllable by command

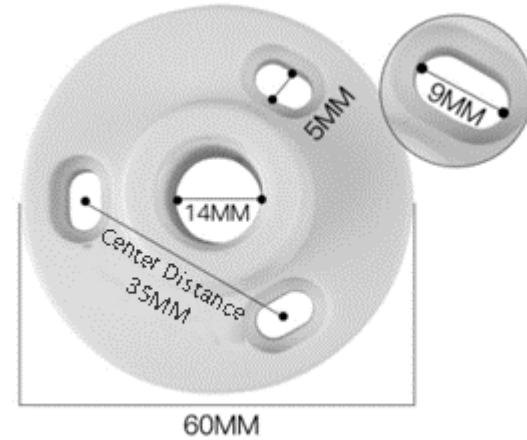
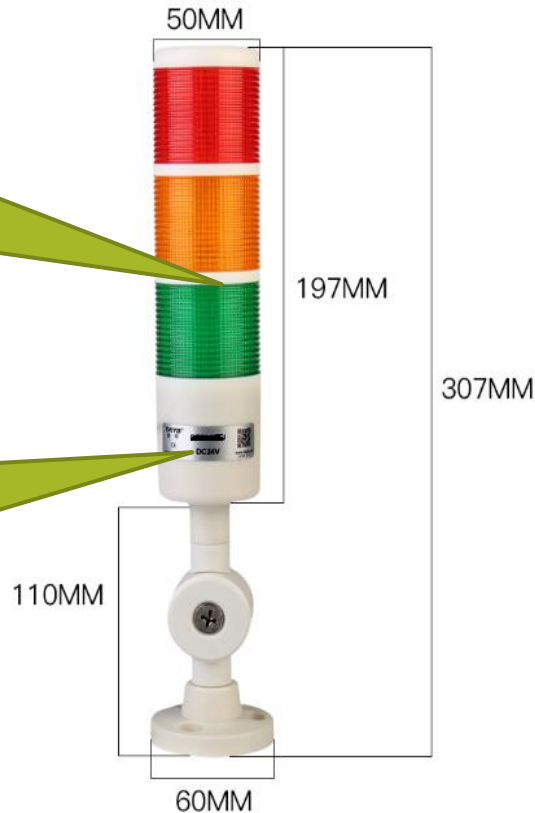


Tower Light with Buzzer  
Model: SETP\_Label\_V9

# Tower Light with Buzzer

All three lights can be controlled independently

Magnetic proximity triggers registration



**DC5.5 \* 2.1**  
Power supply DC24V, <0.2A



# Manual

**Initial:** Set the server and label parameters

---

**Step 1:** The customer sends the picking information to the label server

**Step 2:** The server parses the command requirements and wirelessly lights up the tunnel lights and tags

**Step 3:** Pick items according to the illuminated label and press the confirmation button to turn off the light, and the screen content is updated with the result after the operation.

# System Functions

- Supports tag registration usage
- Single light lighting interface
- Light up in batches
- Light up result query
- Button feedback
- Tag inspection
- Tag inspection result query
- Support online software upgrade
- Large coverage radius, unlimited number of nodes
- Intelligent routing and transmission, sufficient communication tolerance
- Rich and complete management background, the status of each device is under control

# Multifunctional Operation Interface

Through the background management interface, comprehensive management, control and operation of information are achieved.

- Multi-account management background
- Web-based software, you can remotely control tags by entering the URL
- Real-time viewing of base station and tag status
- Label display style template customization
- Import user product data table
- Quick screen refresh and lighting operations
- Simple docking interface (HTTP & Json)
- System software supports cloud and local private server deployment

# Contact information

## Dalian Sertag Technology Co., Ltd

*Experience the power of a solution that's uniquely yours. Let's collaborate and create a tailor-made pick to light system that transforms the way you work.*

- Email: [sales@sertag.com](mailto:sales@sertag.com)
- Tel: 86-13664268735 / 86-411-84641910
- WhatsApp: +86 13664268735
- Skype: [epaperlabel@hotmail.com](mailto:epaperlabel@hotmail.com)
- Website: [www.eslmfg.com](http://www.eslmfg.com)
- [www.lightpicksystems.com](http://www.lightpicksystems.com)

