

PTL Introduction

Smart Electronic TAG

Intelligent Retail



Intelligent
Manufacturing



Intelligent
Warehousing



Dalian Sertag Technology Co.,Ltd
www.eslmfg.com

CONTENTS

01 / Company Profile

02 / Product Introduction

03 / Our Customers



PART 01

Company Profile



Company Profile

Dalian Sertag Technology Co.,Ltd. is a professional visual intelligent tag system manufacture which has rich experiences in visual tag development, design, deployment and maintenance. And also be the first batch of intelligent tag R&D and design company in China.

Sertag commits to provide turnkey solution of visual intelligent tag system to our customer abide by “Customer-oriented” business philosophy, and dedicates for the development of the global internet, retail, manufacturing, warehousing and logistics industry .

From the system quality stability, system cost, product appearance and other aspects of the definition of product characteristics, to provide customers with the most reliable, the best cost-effective intelligent tag system. Help customers to reduce costs, improve work efficiency, improve customer competitiveness.





PART 02

Product Introduction



Overview of PTL

The electronic label picking system is a logistics auxiliary operation system developed using advanced electronic technology and communication technology. It is usually used in the sorting process of warehousing or modern logistics centers. It has fast picking speed, high efficiency, low error rate, and paperless , Standardized operating characteristics. As an advanced operation method, the electronic label assisted picking system is more efficient when used in conjunction with a warehouse management system (WMS) or other logistics management systems.

The electronic label picking system is a group of electronic equipment installed on the shelf storage space. It is controlled by the computer and software, and uses indicator lights or digital displays as auxiliary tools to guide the picking workers to complete the work correctly, quickly and easily.


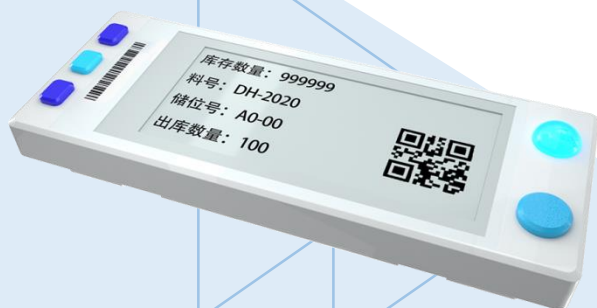


CK_Label_V3

Innovation

- 2.9 inch E-ink screen display
- Wireless communication
- Buttons and three-color highlight LED indicator
- 296 * 128 dot matrix screen
- Support 24V external power supply / battery power supply
- DIY interface supports text / barcode / QR code
- Ultra low power consumption

Production Features




Improve operation speed and quality



Easy and fast deployment

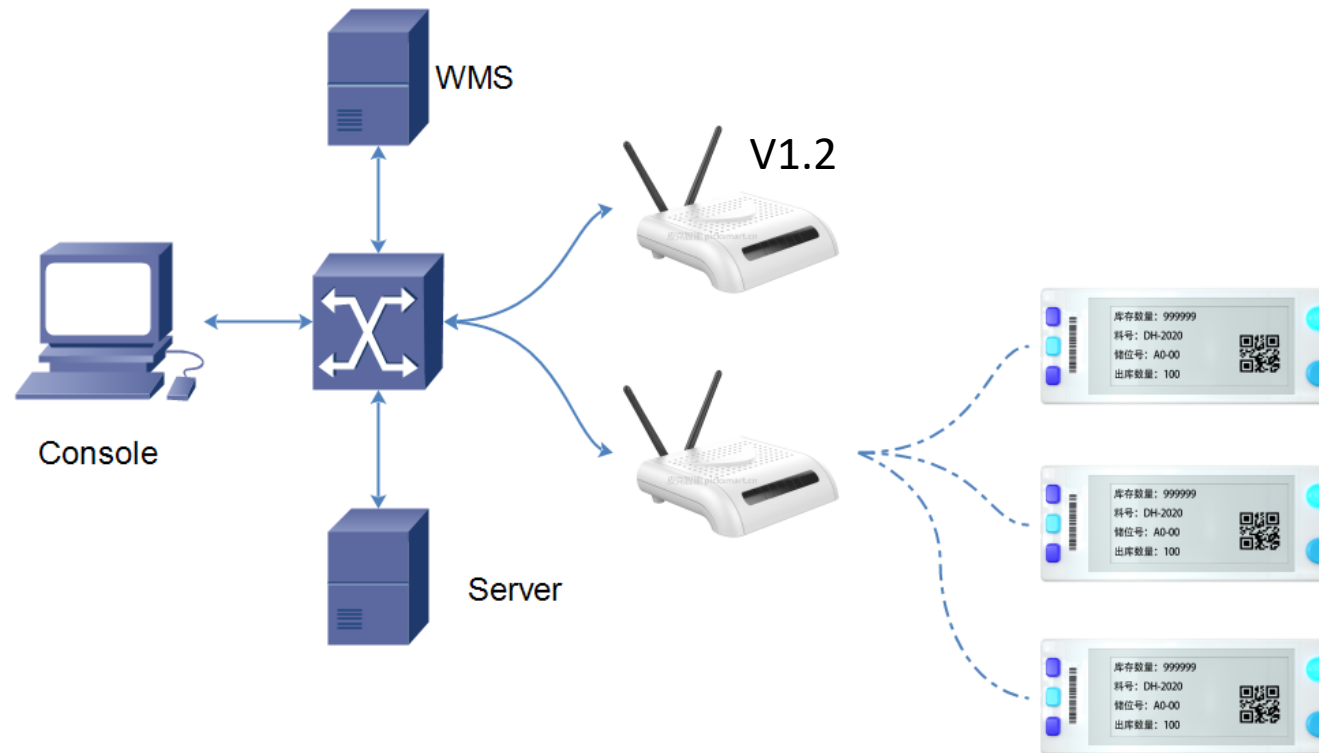


Reduce operator training time



Reduce labor costs, management costs, etc.

Structure 1

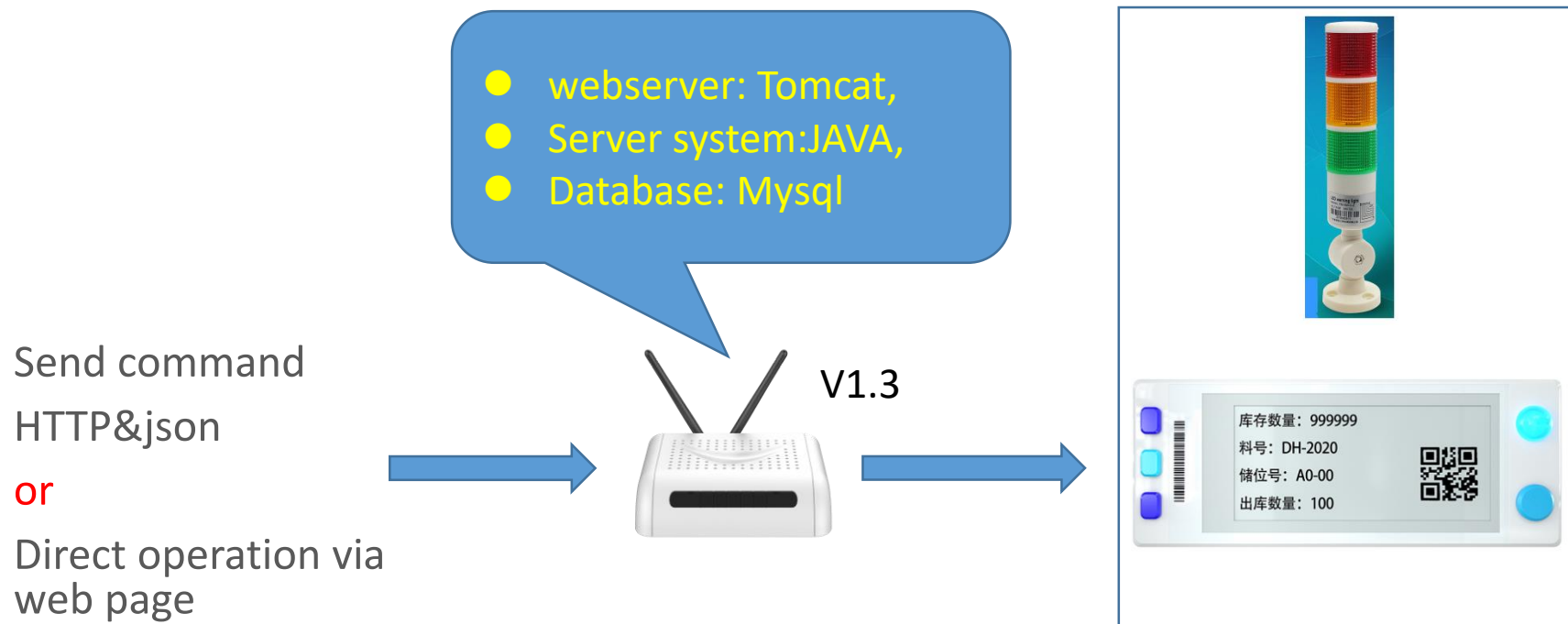


The PTL system is to send instructions through the picking system and forward it through the router, and control the LED lights and screens on the electronic tags to guide the pickers to accurately and quickly pick the corresponding goods to the designated location.

Structure 2

NEW

All in one, more powerful:



Note: The V1.3 version of the base station has a built-in server program. Users only need to send operation instructions to this base station, which is easier to use.

PTL(Pick to light)

Receive and analyze the data information sent by the router, make corresponding instructions, and click the button to complete the picking.

- Electronic ink screen 2.9 inch
- Comes with 4 buttons
- Label ID code displayed on the front
- Wireless communication 868M, frequency hopping communication
- Communication rate 200K / 50K
- Cover a communication radius of more than 30 meters
- Multi-color LED highlight indicator
- Resolution 296 * 128, support character, bar code, QR code display
- Length, width and thickness: 114.5x44.5x19mm
- Two power supply modes are available: 1. Button battery pack power supply, 2.24V external power supply
- Custom two-way communication protocol, safe and reliable
- Screen display area 68x30mm
- Interface Protocol: HTTP & Json



CK_Label_V3

Fixing the label

Two installation methods

1. Paste fixed



This kind of scene suitable for
button battery power supply

2. Track groove fixing

Hole size 36*100mm
Thickness: 1mm

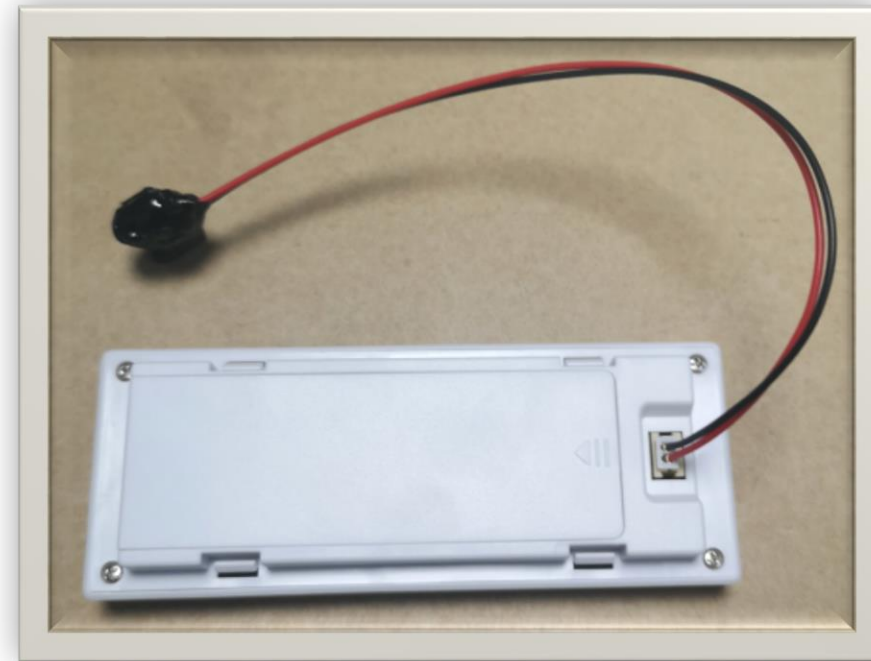


Two power supply methods:

1. Button battery powered



2. DC24V external power supply



Installation Show



Features and benefits

Improve operation speed and quality

Easy and fast deployment

Reduce operator training time

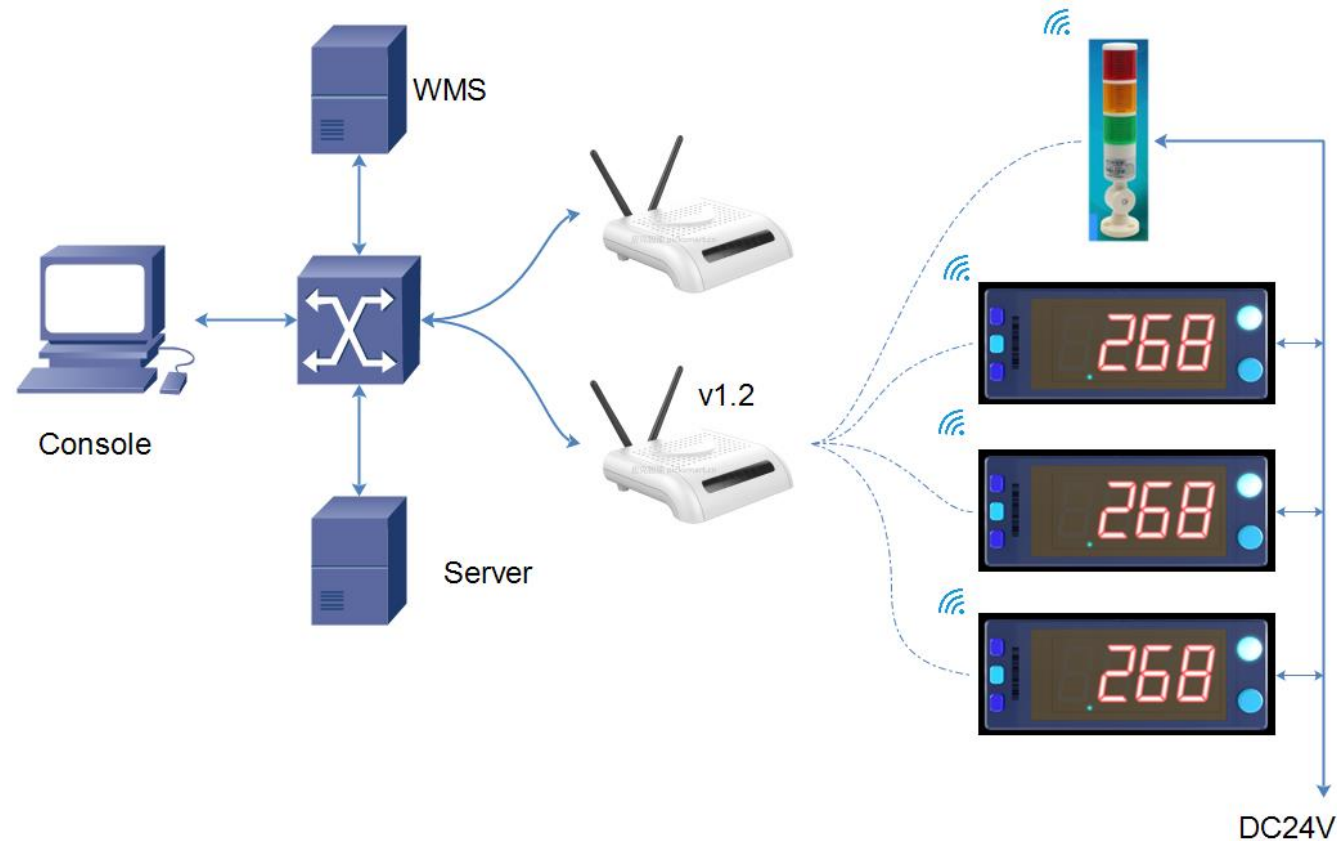
Reduce labor costs, management costs, etc.

Innovation

- 3-digit 0.8-inch highlight LED digital tube display
- Wireless communication
- Buttons and three-color highlight LED indicator
- Support 24V external power supply
- Ultra low power consumption



Structure 1

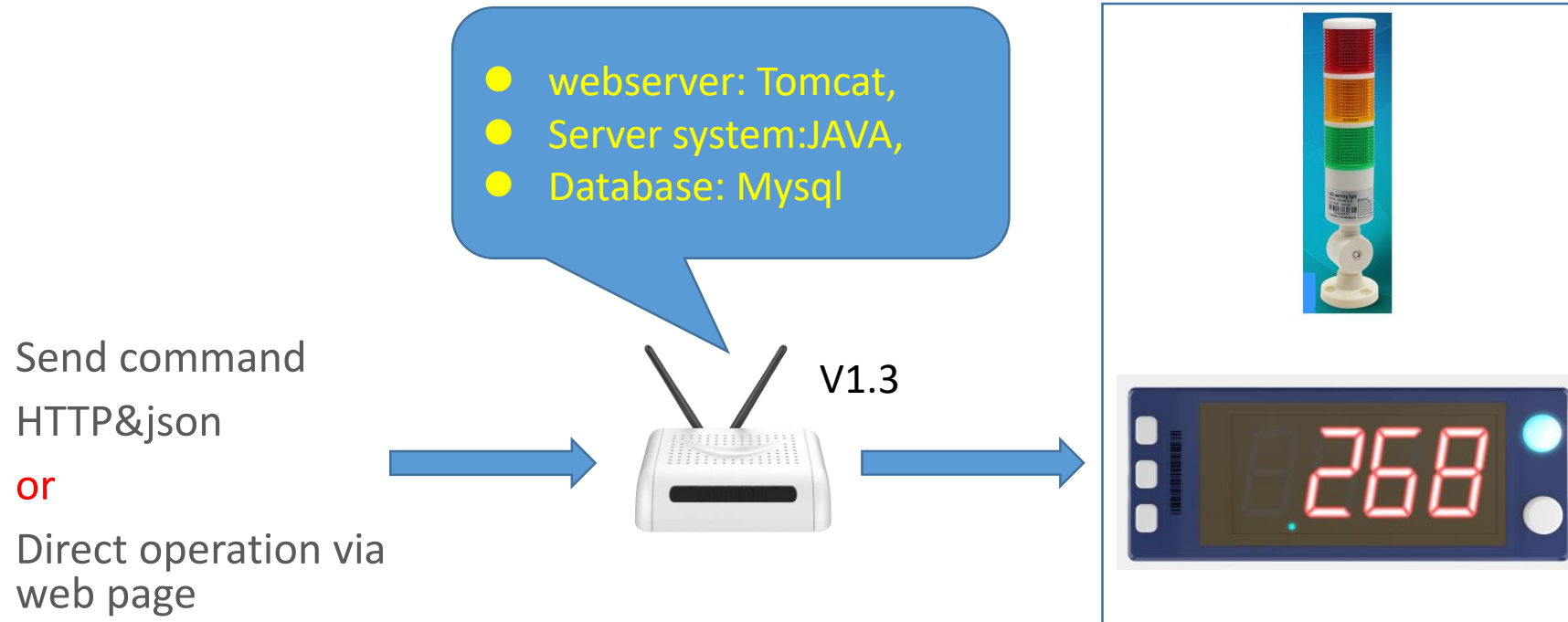


The PTL system is to send instructions through the picking system and forward it through the router, and control the LED lights and screens on the electronic tags to guide the pickers to accurately and quickly pick the corresponding goods to the designated location.

Structure 2

NEW

All in one, more powerful:



Note: The V1.3 version of the base station has a built-in server program. Users only need to send operation instructions to this base station, which is easier to use.

PTL(Pick to light)

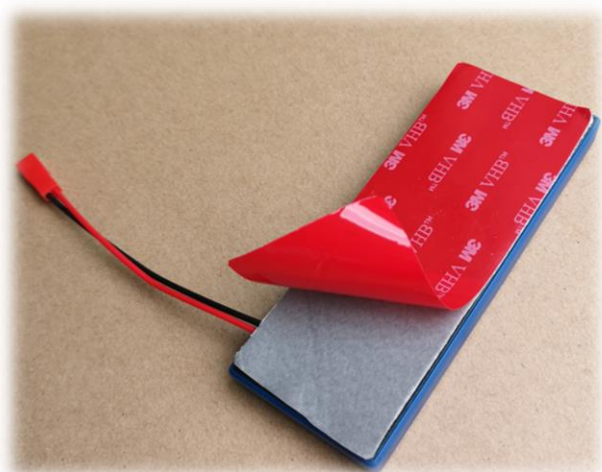
Receive and analyze the data information sent by the router, make corresponding instructions, and click the button to complete the picking.

- 3-digit 0.8-inch LED digital tube highlight
- Comes with 4 buttons
- Label ID code displayed on the front
- Wireless communication 868M, frequency hopping communication
- Communication rate 200K / 50K
- Cover a communication radius of more than 30 meters
- Multi-color LED highlight indicator
- Length, width and thickness: 114.5x44.5x11mm
- Power supply: 24V external power supply
- Custom two-way communication protocol, safe and reliable



CK_Label_V10

Fixing the label



Paste fixed



Installation: Paste fixed
ultra-thin body

Bottom installation
wiring duct

Power supply

DC24V external power supply



Installation Show



Production 3 Router

Receive the operation command issued by the server, parse it and then send it to the electronic tag through wireless

- Wireless communication distance 30m
- Wireless communication rate 200 / 50kbps
- Network communication rate 10/100 Mbps
- Custom two-way data communication protocol to ensure data transmission speed and accuracy
- No limit on the number of electronic tags covered
- Support multiple routers working synchronously
- Parallel communication, safe and fast
- All-round transmission, no dead ends
- Support online software upgrade



V1.2 version of the base station has an independent routing function and needs to cooperate with the label server

V1.3 version base station comes with server program

Production 4: Lane road lights

Wirelessly receive and analyze the data information sent by the router, make corresponding instructions, cooperate with the picking lane prompts

- Cooperate with label picking
- All three lights can be controlled independently
- Wireless communication 868M, frequency hopping communication
- Communication rate 50Kbps
- Cover a communication radius of more than 30 meters
- Multi-color LED highlight indicator
- 24V external DC power supply



CK_Label_v9

Step 1: Set the server and label parameter information

Step 2: The customer sends the picking information to the tag base station

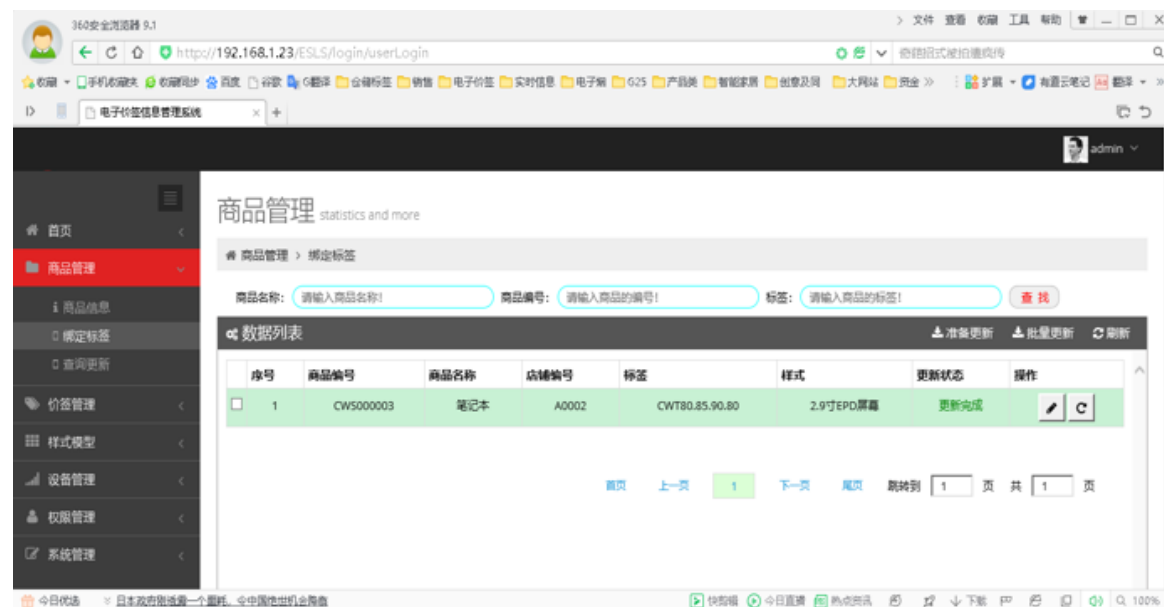
Step 3: The server analyzes the instruction requirements and wirelessly lights the roadway lights and tags

Step 4: Pick the goods according to the lighted label, press the confirm button to turn off the light, and the screen content is updated to the result of the operation

Multi-function operation interface

Through the background management interface, to achieve comprehensive management and control of information.

- Multi-account management background
- Web-side software, you can remotely control tags by entering the URL
- Real-time view of base station and tag status
- Label display style template customization
- User product data table import
- System software supports deployment of cloud and local private servers
- Quickly refresh and light up
- Simple docking interface



Docking interface

The operation interface can quickly realize the docking operation with other systems

1. Query label information interface
2. Update the ink screen interface
3. Feedback result of ink screen update
4. Three-color roadway light control

Type: POST,
Parameter format : json

Demo:

http://localhost/esls_new/associate/updateScreen 代码形式:
{ url : http://localhost/esls_new/associate/updateScreen, requestMethod :
POST, requestParameter:[{ { "mac":"99.99.08.51", "mappingtype":223,
"styleid":96, "ledstate":1, "ledrgb":"ff00", "料号":"abcdABCD-/*1234567890", "
版本号":"V12.27", "config":"config", "出库数量":"999999", "入库数量
":"999999", "储位号":"A0-b1", "库存数量":"99999", },] response:{ true} }



PART 03

Our Customers

Our Customers

Retailers



Home Retail Industry



3C Retail



Others

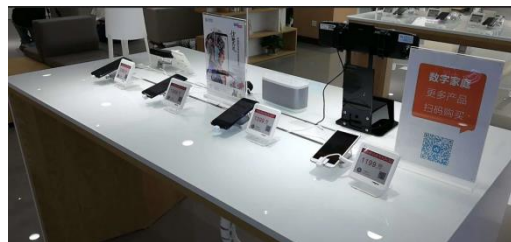
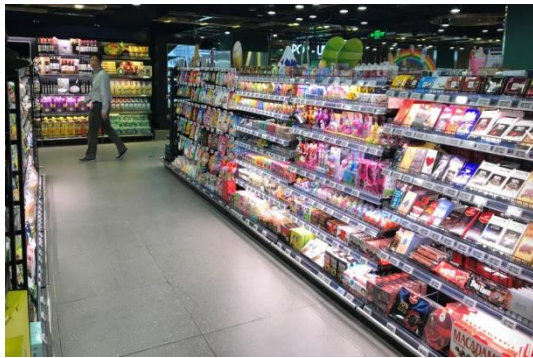
Industrial
Bakery
bookstore...



Our Customers



Our Customers



Worldwide partners

In China:



Overseas:



THANK YOU

Electronic Shelf Label

Electronic
shelf labels
manufacturer



Digital price
tags supplier



Professional ESL
system provider



Dalian Sertag Technology Co.,Ltd
sales@sertag.com



Contact us



86 411-84641910



86 13664268735/13124130003



www.eslmfg.com



sales@sertag.com