

Catalogue

[Product introduction]

[Solution]

[Partner]

[About us]

Product introduction

[Strip screen]

[Square screen]

[Splicing screen]

[Transparent screen]

Product introduction

Strip screen



In the past, the traditional media carriers were relatively flat and single in terms of aesthetics and information bearing, and the performance was unsatisfactory. However, the emerging multimedia LCD, whether in terms of the richness and form of information bearing, had a qualitative improvement compared with the traditional media carriers. Can maximize the use of existing space dynamic display of eye-catching media content, can also enhance the artistic value of the product itself. For example, airport, subway, art gallery or retail store, the product itself is also a work of art, which can be regarded as digital modern decoration. The long bar display supports the display of ultra-high-definition content. It can be divided into multiple areas on one screen to display different pictures. It can also create various formats of content, effectively publish business information and increase the manageability of content, and create and edit content simply and quickly.

Product introduction

Strip screen

	MON 4/10 22°C			MON 4/10 22°C	
	Apple	Orange		Chinese gooseberry	Blackberry
	\$ 0.8	\$ 0.5		\$ 2.8	\$ 0.5
		Bnana			Cherry
		\$ 1.2			\$ 1.2

Product features:

- special display proportion
- extra thin, ultra long, ultra light, ultra narrow design, easy to use
- high resolution, high contrast, high brightness, greatly improve the picture level sense, can better show the details
- has the function of automatic elimination of residual shadow to protect the long - term use of LCD screen
- with black level extension adaptive function, enhance image levels
- with professional LCD screen, the video image is brighter and the stereo sense is stronger
- 16.7M color, more natural and fine picture without tailing
- intelligent temperature control, environmental protection, high reliability and stability, especially suitable for working in harsh environment
- product performance is stable, supporting 7 * 24 hours of uninterrupted work, continuous working up to more than 50,000 hours

Product introduction

Strip screen specification



Item	Resolution/pixel	Brightness	Visible area/mm(ILxW)	System/Android
CN080TXP-V01	1280x400	700	205.78x67.80	6.0
CN088TXP-V01	1920x480	600	218.90x54.80	6.0
CN190TXP-V01	1920x360	300	476.64x89.37	6.0
CN210TXP-V01	1920x132	300	529.42x36.40	5.1.1
CN231TXP-V01	1920x158	500	585.60x48.19	5.1.1
CN240TXP-V01	1920x360	300	597.89x112.11	6.0
CN280TXP-V01	1920x360	700	699.84x131.22	6.0
CN290TXP-V01	1920x540	500	705.60x226.25	6.0
CN370TXP-V01	1920x540	700	899.71x253.05	6.0
CN371TXP-V01	1920x135	600/1000	941.18x66.18	6.0
CN377TXP-V01	1920x375	600/1000	941.18x177.40	6.0

Product introduction

Strip screen specification



Item	Resolution/pixel	Brightness	Visible area/mm(ILxW)	System/Android
CN380TXP-V01	1920x570	700	938.65x285.06	6.0
CN440TXP-V01	3840x1080	300/700	1071.36x301.32	5.1.1
CN490TXP-V01	3840x720	1000	1217.90x248.20	5.1.1
CN500TXP-V02	2560x1080	450	1179.20x502.10	HDMI/DVI/VGA
CN700TXP-V02	3840x1440	500/1000	1649.67x618.62	HDMI/DVI/VGA
CN860PV3-V02	3840x600	500	2149.50x336.70	HDMI/DVI/VGA
CN880TXP-V02	3840x1080	700	2149.50x599.40	HDMI/DVI/VGA

Product introduction

Square screen

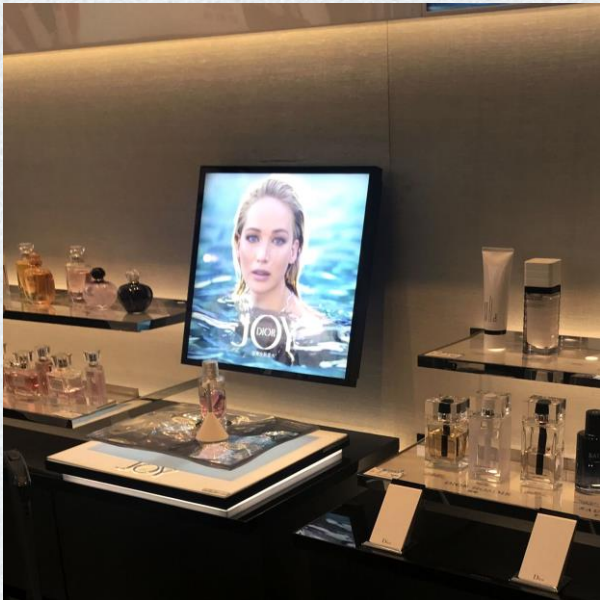
Product features:

- special display ratio (1:1)
- ultra thin, ultra long, ultra light, ultra narrow design, easy to use, beautiful
- high resolution (1920x120), high contrast, high brightness, greatly improving the image level sense, better performance of details
- has the function of automatic elimination of residual shadow to protect the long - term use of LCD screen
- With black level extension adaptive function
- With professional LCD screen, the video image is brighter and the stereo sense is stronger
- 16.7m color, the picture is more natural, delicate picture without tailing
- has intelligent temperature control, environmental protection, high reliability and good stability, especially suitable for working in harsh environment effectively
- Stable product performance, support 7*24 hours of uninterrupted work, continuous working up to more than 50,000 hours



Product introduction

Square screen



Item	Resolution/pixel	Bright ness	Visible area/mm(ILxW)	System
CN170FXP-V02	1920x1920	500	305.28x305.28	HDMI/DVI/VGA/DP
CN220FXP-V02	1920x1920	500	409.56x409.56	HDMI/DVI/VGA/DP
CN265FXP-V02	1920x1920	300	479.00x479.00	HDMI/DVI/VGA/DP
CN330FXP-V02	1920x1920	500	596.16x596.16	HDMI/DVI/VGA/DP

Product introduction

Splicing screen



Product introduction

65 " Splicing screen

Panel		
Screen Size	1216.4(W) x 687.8(H) x 90(D)mm	1437(W) x 814(H) x 110(D)mm
Active Screen Area	1209.6(H)x680.4(V)mm	1428.48(H) x 803.52(V)mm
2x2 TV Wall Size	2432.8 (W)x 1375.6(H)x 90(D) mm	2874(W) x 1628(H) x 110(D) mm
Backlight Type	LED Back-lit	
Resolution	UHD 3840x2160	
Panel Technology	S-IPS	
Active Screen Area	1428.48(H) x 803.52(V)mm	
Pixel Pitch	0.630 x 0.630	
Surface Treatment	Matte finish	
Aspect Ratio	16:09	
Brightness	500 cd/m²	
Contrast Ratio (typical)	6000:1	
Displayable Colors	16.7M	
Response Time (typical)	6.5ms	
Viewing Angle	178° Vert., 178° Hor. with CR>10	
Refresh Rate	20Hz-60Hz	
Light Life	60,000hrs	
Connectivity		
Input	HDMIx1/VGAx1/DVI-Dx1/BNCx1/RJ45x1/ISPDEBUGx1	
Output	BNCx1/RS-232	
Power		
Power Consumption	≤265W/<1W	
Voltage	AC110V-240V 50/60Hz	
Environmental Conditions		
Operating Temperature	32-122°F / 0-50°C	
Weight	24KG	

Product introduction

Transparent screen

Transparent display screen can make the screen as transparent as glass, keep the transparency and ensure the color richness and display details of the dynamic screen. Therefore, the transparent screen interactive display device let users watch the exhibits behind the screen at a close distance.

Application scope of transparent screen

In front of the transparent screen interactive device, there are 22 inch, 32 inch, 46 inch and other different sizes of screens. It is very suitable for shopping malls to display jewelry, various high-end goods and Museum industries to display some cultural relics

Future product trends

With the continuous development of display technology, transparent screen is entering the market. Compared with traditional LCD, transparent screen can bring users unprecedented visual experience and new experience. Because the transparent screen itself has the characteristics of screen and transparency, it can be applied to many occasions, that is, it can be used as a screen, and can replace the transparent flat glass. Transparent screen is mainly used for exhibition and product display, such as replacing window glass with transparent screen. In the future, transparent screen will have a very broad application field, for example, in the construction, transparent screen can be used to replace the window glass, and in the electrical products, it can be used as the glass door of refrigerators, microwave ovens and other electrical appliances. The transparent screen enables the audience to see the screen image and the objects behind the screen, which enhances the efficiency of information transmission and adds a lot of interest .



Solution

Background

“Stores need interactive content that is elaborate enough, but hiring a designer is expensive, and it takes a long time to communicate the content style .”



“Content updates or system failures mean long maintenance times, impact on customer experience, and cost more .”

Online e-commerce has become an irresistible trend in the world. How to provide the best consumption experience for the new generation of consumers growing up from the Internet? How to improve the way of operation, reduce costs and increase efficiency, These are not only the urgent tasks for traditional e-commerce enterprises to make up, but also the urgent new challenges for modern retail industry (new retail).

**Increase revenue, reduce cost and improve efficiency
through open source**

Solution

ims-DSL solution

ims-DSL can provide one-stop content management solutions for stores, including publishing, targeted advertising, consumer information collection and other functions. The main functions include: content design, schedule, content distribution, price management and unified management.

simple

Simple and intuitive editing interface, what you see is what you get. It also has an extensible component database, which is convenient for every user to design exquisite and high-quality content .

The user interface can display all software and hardware status at a glance, and support remote access to speed up troubleshooting. Support various types of display devices, so that the content can be sent synchronously in real time.

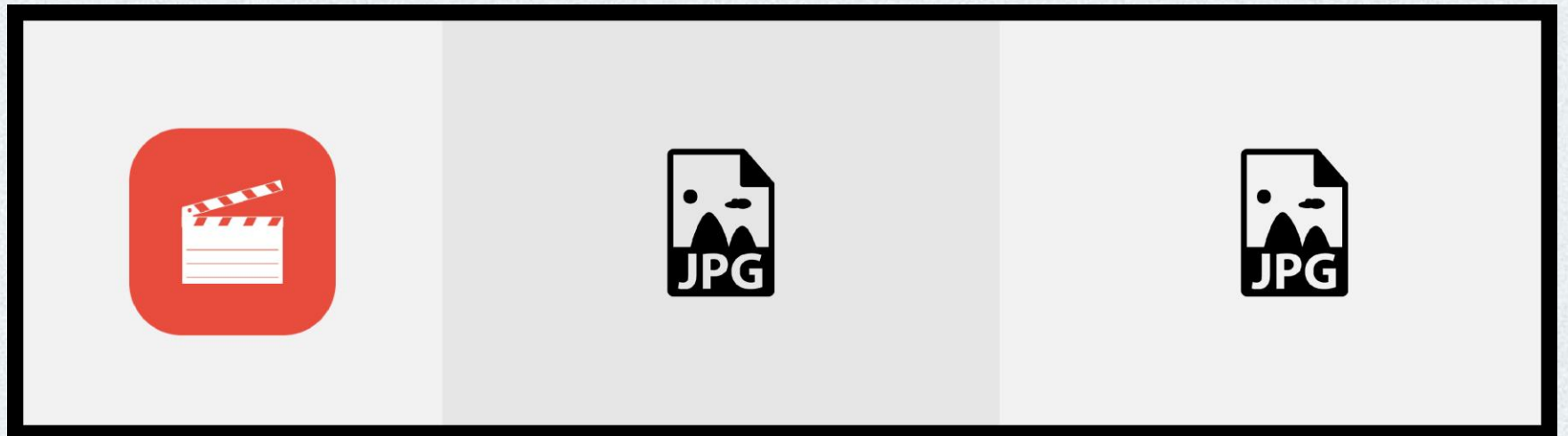
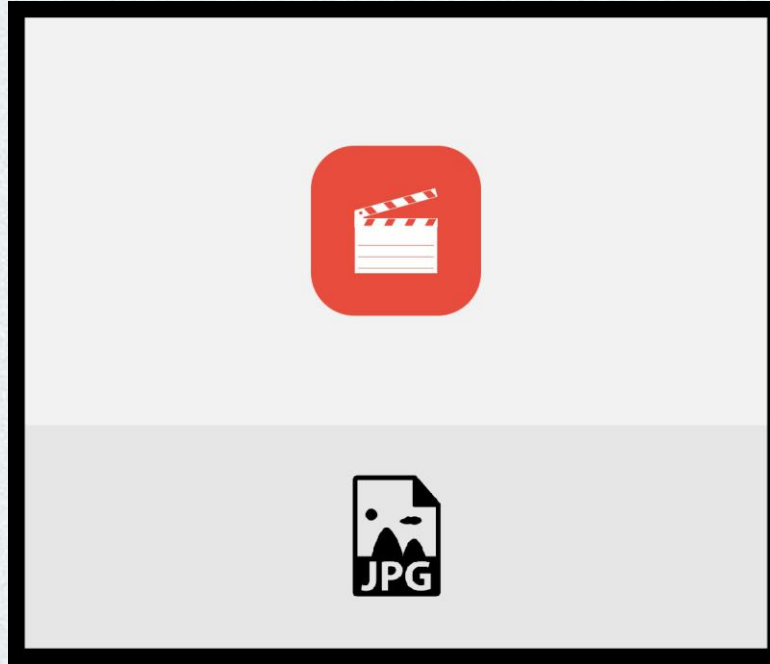
efficient

When consumers browse interactive content, IMS DSL can automatically collect data and convert it into easy to understand icons to help stores adjust their marketing strategies in real time. By importing product data into interactive templates, a large number of data can be maintained and updated quickly at the fingertips of mobile terminals.

smart

Solution

ims-DSL Sketch Map



ims-DSL supports any segmentation and any resource, including interaction with consumers, which will serve as the offline consumer information portal.

Solution

ims-DSL Software component

Provide rich templates

ims-DSL with more than 100 built-in templates, it provides professional design for various market segments, covering more than 10 application scenarios. Among them, multiple sets of interactive templates are provided, which can be embodied in e-menu, E-Shelf label, shopping guide, etc. Stores can import the product database into the template and simply deploy the content to the device with one click .

Content link

When designing content, the screen can be easily linked to any address or page as required, so as to make the content display more diversified.

Provide dynamic design

ims-DSL provide a variety of design components, you can use the lowest cost and energy to create content signs that you are satisfied with, you can insert various styles of pictures and videos, you can also add dynamic transformation of animation and bullet screen effect text. Even dynamic clocks and weather widgets generate rich Suites such as QR codes or interactive games to meet a variety of needs.



Solution

Application scope

Industrial process control display system

Radio and television display system

Shopping mall, hotel, communication information display system

Finance, securities information display system

Enterprises ,institutions multimedia video conference display system

Mining safety production system

Urban environmental command system

Fire control, meteorological and maritime flood control command systems

Airport, subway, flight display, line security system

Theater, media advertising, exhibition display system

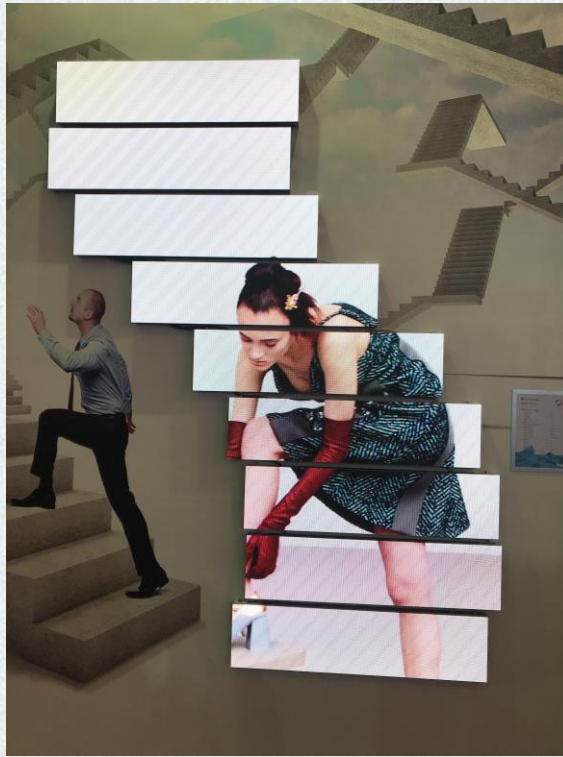
Brand store image display system

Live concert, etc.

Application scenes



Application scenes



Application scenes

