



Wind Shifter

JUST SHRED IT, THUS SORT IT.

harden

harden



Contact Harden for professional shredding and recycling solutions.

HARDEN MACHINERY LTD.

Address: XingDa Street, Torch Development Zone, Zhongshan city, China

Email: info@hardenmachinery.com Tel: 0760-89935422

Web: www.harden-shredder.com



JUST SHRED IT, THUS SORT IT.

About Us

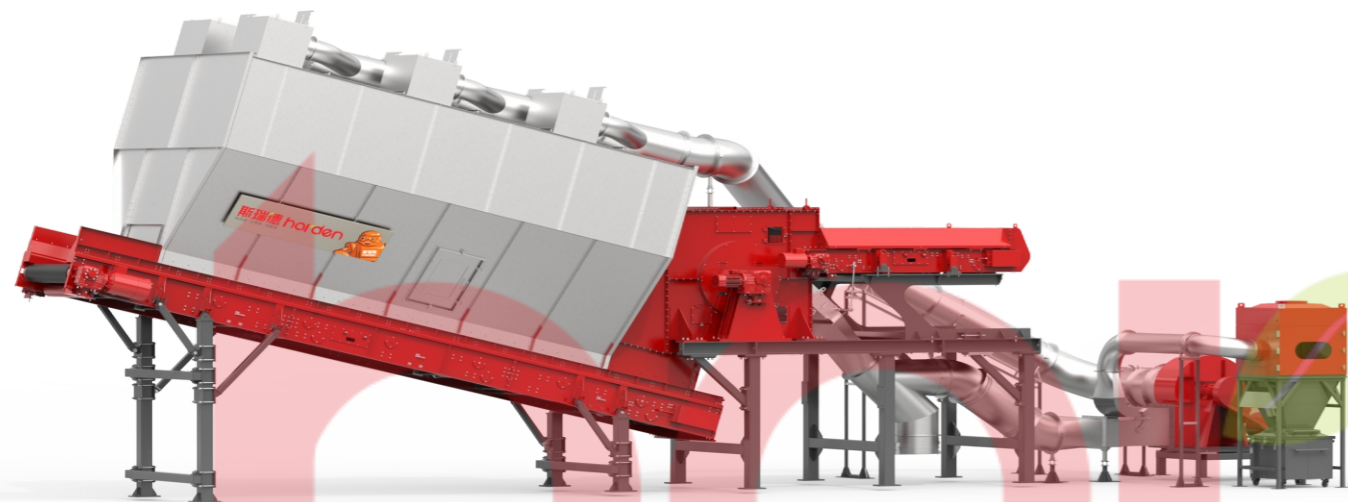
Founded in 2010, HARDEN MACHINERY LTD. is the expert in design and manufacturing of industry shredders, sorting machines and processing lines for various types of solid waste disposal. With its advanced technology, R&D capability, quality products and excellent after-sale service, HARDEN has become one of the leading companies in solid waste recycling industry in Asia and globally.

Core Advantages of Harden

- Leading enterprise for solid waste processing in China
- Cooperates with European companies
- Full ranges of products
- Famous brand configuration for core components
- The largest R&D scale for solid waste processing in China
- More than 10 years experience in waste industry
- Perfect solutions for solid waste
- More than 1,400 cases domestic and overseas

Wind Shifter

The blast wind shifter consists of a circulation extension unit, a separation drum unit, a conveyor, a diffusion chamber, and a dust collector. Operating on the principles of aerodynamics, this equipment employs controllable airflow as the medium for sorting. With the aid of controllable airflow, materials are separated based on density and particle size. The airflow can carry lighter materials upwards or horizontally to a distant location, while heavier materials either fall due to lack of support from the updraft or are propelled closer horizontally due to inertia. This wind sorting process leverages the settling characteristics of various solid wastes in the air to achieve the objective of classification, recycling, and reuse.



Technical Parameters

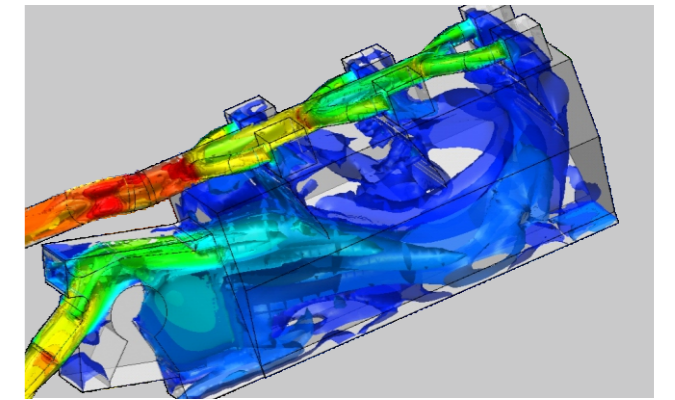
Product Model	SFX800	SFX1200	SFX1400
Feeding Materials Width	800	1200	1400
Processing Capacity	60m ³ /h	120m ³ /h	145m ³ /h
Installed Power	33KW	42KW	58KW
Machine Size	13600X3600X6000mm	17600X5200X6900mm	20000X6500X8100mm
Voltage	AC380V/50Hz		

Depending on the material's properties and bulk density, the above capacity may vary

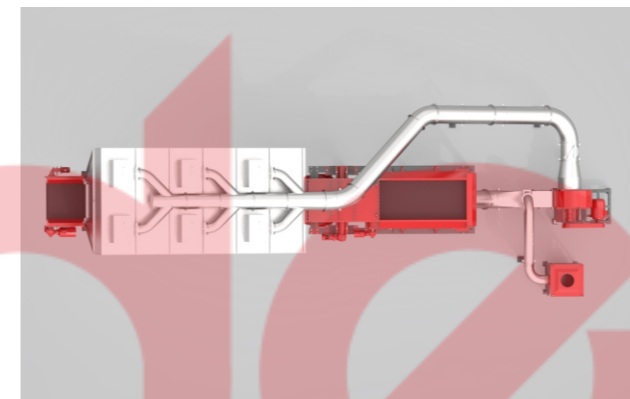
Product Features



The system offers high reliability and robust adaptability to handle a wide variety of materials while incurring low maintenance costs.



Utilizing negative pressure technology throughout, the entire system effectively minimizes dust emissions.



Benefiting from efficient recirculation airflow technology, the system achieves high efficiency and minimal energy consumption.



Its modular design allows for effortless assembly and swift adjustment of modules.

Typical Applications



Construction waste



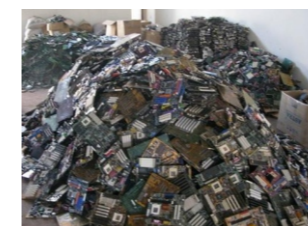
Biomass waste



Industrial waste



MSW waste



Electronic scrap



Waste plastic



Stale waste



Incineration residue

Applications



Processing materials: Domestic waste

Site: Daxing, Beijing
 Date: Oct. 2021
 Model: SFX1200 (15t/h, 20-80mm) SFX1200 (15t/h, 80-300mm)
 Application: Pretreatment before entering the photometric sorter and manual sorting



Processing materials: Industrial paper waste

Site: Dongguan, Guangdong Province
 Date: May. 2022
 Model: SFX1200 (20t/h, 80-250mm)
 Application: Screening rocks and metal objects to prepare RDF



Processing materials: Decoration Waste

Site: South Korea
 Date: Dec. 2021
 Model: SFX800 (20t/h 80-200mm)
 Application: Removing plastic impurities from decoration waste



Processing materials: Industrial Leather and Paper Waste

Site: Longyou, Zhejiang Province
 Date: Aug. 2022
 Model: SFX1200(15t/h,60-250mm) leather fabric
 SFX1200(20t/h,60-250mm) paper waste
 Application: Pretreatment before entering the shredder



Applications



Processing materials: Domestic waste

Site : South Korea
 Date : Dec.2022
 Model : SFX800 (10~12t/h 40-200mm)
 Application : Removing plastic impurities from decoration waste



Processing materials: Industrial Waste

Site : Zaozhuang, Shandong Province
 Date : Jan. 2023
 Model : SFX1200 (20t/h, 80-300mm)
 Application : Removing impurities from RDF fuel



Processing materials: Industrial Waste

Site : Dongguan, Guangdong Province
 Date : Dec. 2022
 Model : SFX1200 (20t/h 40-250mm)
 Application : Removing impurities from RDF fuel



Processing materials: Industrial Waste

Site : Zhangping, Fujian Province
 Date : Apr. 2023
 Model : SFX1200 (20t/h 40-300mm)
 Application : Removing impurities from RDF fuel



Applications



Processing materials: Industrial Leather and Fabric Waste
 Site: Yangjiang, Guangdong Province
 Date: June 2023
 Model: SFX1200 (20t/h, 40-300mm)
 Application: Removing impurities from RDF fuel



Processing materials: Industrial Waste
 Site: Yongfeng, Jiangxi Province
 Date: Apr. 2023
 Model: SFX1200 (20t/h 40-300mm)
 Application: Removing impurities from RDF fuel



Processing materials: Industrial Waste
 Site: Taiwan
 Date: July 2023
 Model: SFX800 (8t/h, 80-200mm)
 Application: Removing impurities from RDF fuel



Processing materials: Industrial Waste
 Site: Zhangping, Fujian Province
 Date: Apr. 2023
 Model: SFX1200 (20t/h, 40-300mm)
 Application: Removing impurities from RDF fuel

