



Primary Shredder

harden

JUST SHRED IT, THUS SORT IT.

harden



Contact Harden for professional shredding and recycling solutions.

HARDEN MACHINERY LTD.

Address: XingDa Street, Torch Development Zone, Zhongshan city, China

Email: info@hardenmachinery.com Tel: 0760-89935422

Web: www.harden-shredder.com



JUST SHRED IT, THUS SORT IT.

About Us

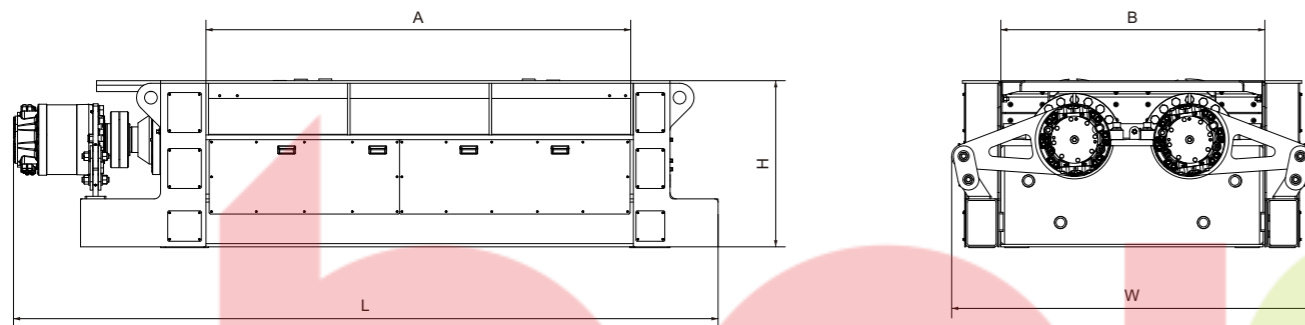
Founded in 2010, HARDEN MACHINERY LTD. is the expert in design and manufacturing of industry shredders, sorting machines and processing lines for various types of solid waste disposal. With its advanced technology, R&D capability, quality products and excellent after-sale service, HARDEN has become one of the leading companies in solid waste recycling industry in Asia and globally.

Core Advantages of Harden

- Leading enterprise for solid waste processing in China
- Cooperates with European companies
- Full ranges of products
- Famous brand configuration for core components
- The largest R&D scale for solid waste processing in China
- More than 10 years experience in waste industry
- Perfect solutions for solid waste
- More than 1,400 cases domestic and overseas

Primary Shredder

Harden large-scale hydraulic driven primary shredder, with the characteristics of high strength and low maintenance cost, is used for volume reduction of bulky waste and pretreatment application of solid waste, which combines with multiple processing mechanism such as shearing, chopping, tearing and extrusion, can easily process the complicated mixed solid waste, e.g. the untreated MSW, Decoration waste and Industrial waste. Harden primary shredder can discharge material flow with relative uniform particle size, which is convenient for sorting equipment to further separate or recycle the material, so as to obtain valuable recycling resources or high calorific value RDF. Besides, primary shredder can be used as "Bag opener" with the redesigned cutter.



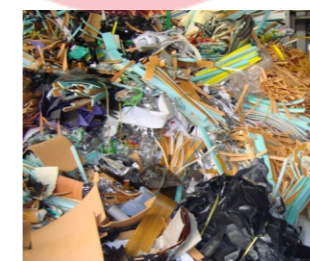
Technical Parameters

Model	TPH1026	TPH1620	TPH1826
Motor power (KW)	132-200	132-250	250-400
Rotational speed (RPM)	17-58	17-58	17-58
Cutting chamber (AxB)(mm)	1000x2600	1600x2000	1800x2600
Quantity of knives (pcs)	9-11	14-18	18-22
Overall dimensions (LxWxH)(mm)	5000x1550x1200	4400x2100x1060	5000x2350x1200
Capacity (t/h)	15-40	20-50	30-80

Applications of Primary Shredder



Untreated MSW



Commercial Waste



Bulky Waste



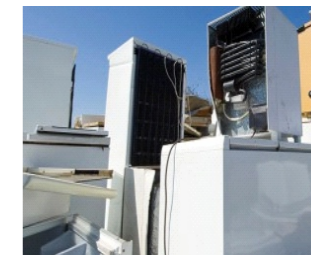
Biomass Waste



Decoration Waste



Waste Car



Household appliance



Iron & Aluminum Scraps

01

- **Knife material:** High impact & abrasion resistance.
- **Shaft material:** 42CrMo alloy, heat-treated & ultrasonic-tested.
- **Rotor knife:** Double hook design for efficiency, can be hard-faced.
- **Welded knife:** Rotor knives welded onto shaft. Stator knives welded onto cutting chamber.
- **Weld bead protection:** Protective sleeve welded onto shaft to protect weld points of the knives to the shaft.
- **Overlaying welding on shaft:** Increases durability

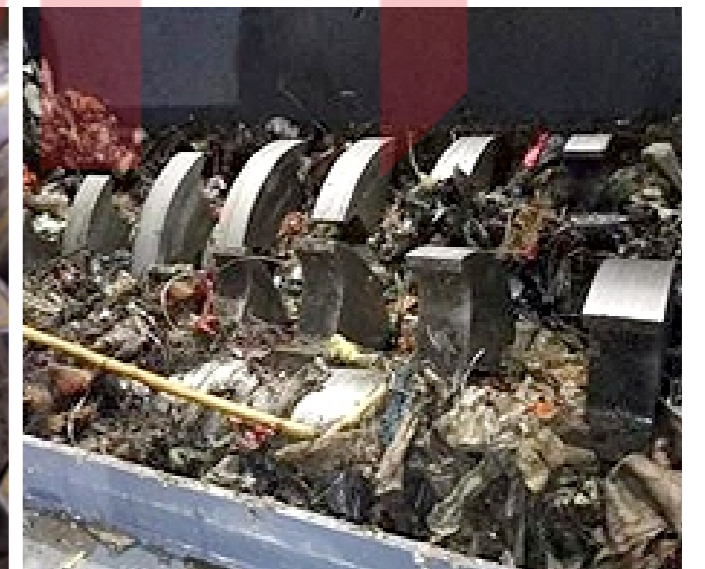
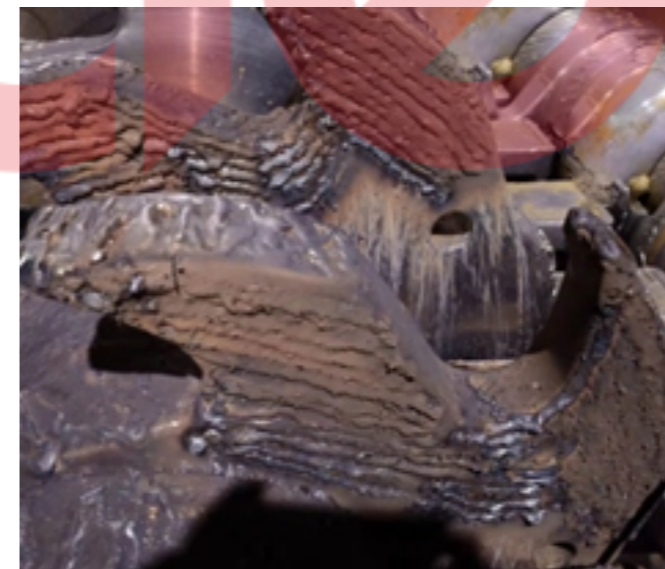
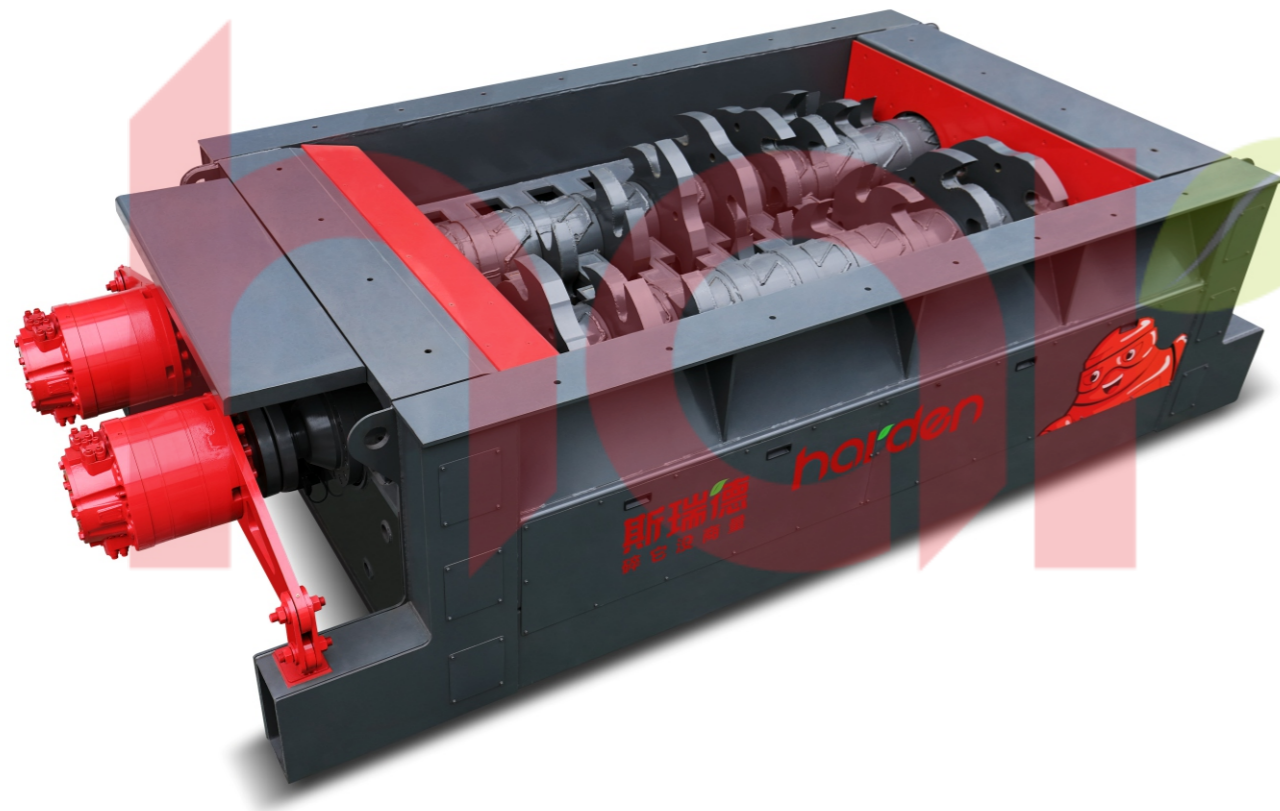


02

- **Driving:** direct & smart hydraulic driving, agile shaft forward & reverse running.
- **Max pressure:** 40mpa for continuous high torque output.
- **Vibration damper:** increases hydraulic motor lifespan.
- **Bearing lubrication:** auto lubrication system.

03

- **Shredding method:** alternates between forward and reverse for high efficiency.
- **Shredding mode:** multiple modes for different applications.
- **Bearing sealing:** 5 levels of sealing for harsh & dusty environment.
- **Shaft assembly:** integrated shaft & bearing design for easy disassembly.
- **Knives repair:** Knives on the shredder can be maintained via hard-facing directly without disassembly.
- **Bearing lubrication:** auto lubrication system



Selected Customers / Cases

