
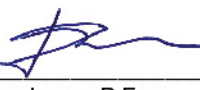


ALUMINIUM SHORING FRAME

Report NUMBER: 101111567COQ-002

Original Issue Date: March 27, 2013

Test No.	Height	[lbf]	[kN]	[kgf]
1	4.572m (15')	119,580	531.9	54,241
2	4.572m (15')	115,535	513.9	52,406
3	4.572m (15')	107,447	477.9	48,737
4	4.572m (15')	125,646	558.9	56,992
Average		117,052	520.7	53,094

Reported by: Chris Chang, P. Eng.
Engineer, Building ProductsReviewed by: Riccardo DeSantis
NORTH AMERICA Manager
Building ProductsReviewed by: Dan Lungu, P. Eng.
Engineer,
Manufactured Housing

Email: scaffoldingplus@163.com web: www.scaffoldingplus.com



Bending Test / Flexión

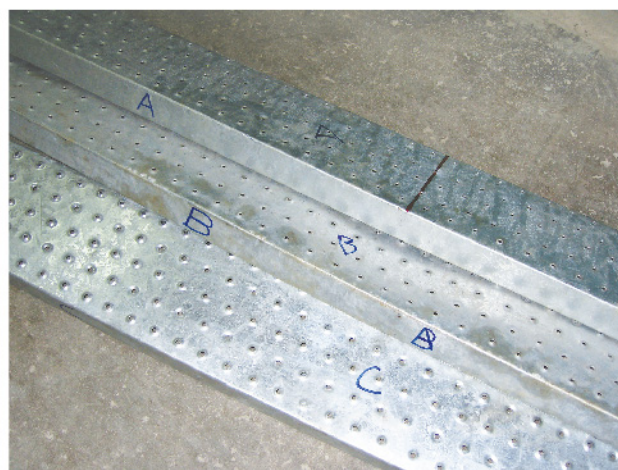
STEEL PLANK / PLATAFORMAS

Specimen size : 7' (2134mm) x 9" (229mm), Thickness 0.08" (2mm) Hot Dipped Galvanized
 Tamano de pieza : 7' (2134mm) x 9" (229mm), Espesor 0.08" (2mm) Galvanizado En Caliente

Specimen / Muestra	Maximum Deflection / Deflexión Maxima (mm)	Ultimate Load (kN / (kgs) / lbf)
A	30	7.825 / 798 / 1,759
B	28	7.703 / 786 / 1,732
C	30	7.626 / 777 / 1,714



TESTING / PRUEBAS



AFTER TEST / DESPUES DE