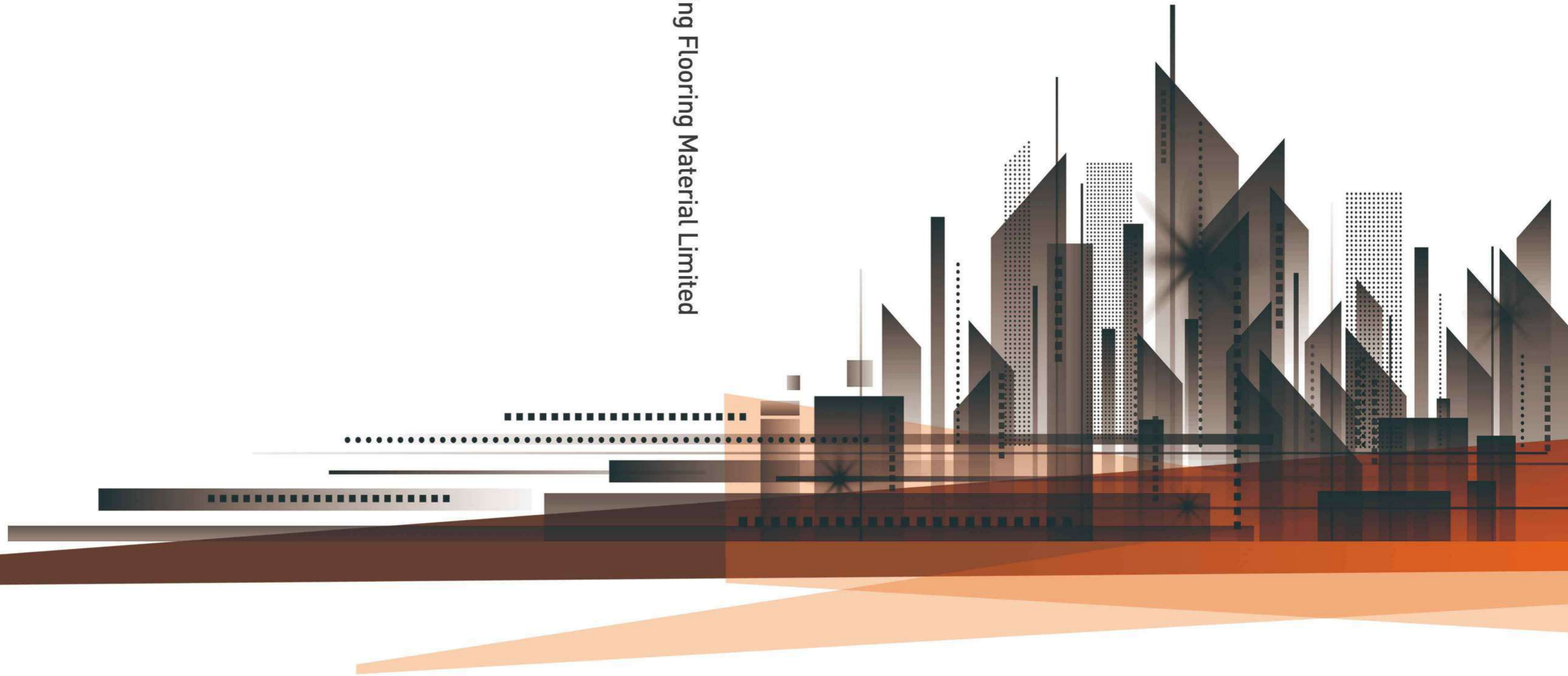


# PFM

## PROJECT 2019

PFM

Promising Flooring Material Limited



Promising Flooring Material Limited

**IDEAS  
TO  
REALITY BUILDER**

## **PFM MISSION**

To continue our history of providing first class, industry leading services in the global construction industry with an excellent and innovative spirit.

## **PFM PROMISE**

To reliably provide all clients with construction material solutions and modern technical support with highest level of professionalism.

## **PFM SERVICE**

We provide complete construction solutions including design, engineering, material selection, fabrication, shipping and installation. On site management services providing supervision, scheduling and quality control. 24h/7d technical support is available.

## **ABOUT US**

Promising Flooring Material Ltd. is one of the most successful, and rapidly expanding construction organizations in the east Asian region. Established in 2008, we offer the industry's most comprehensive range of construction materials. We are a one of a kind, turn-key, interior and contracting solution provider.

Our aim is to continue to grow, by taking on projects that more than demonstrate what we are capable of. Surpassing expectations, and continuing to enhance the lives of our people.

Our success is built on fostering strong, long-term relationships with clients and suppliers. These relationships are based on trust, respect, and transparent ethical working practices. Our clients' faith in us inspires us to complete projects on time, and on budget.

To achieve our goals, we continue to innovate by embracing leading-edge technology, and constantly monitoring and enhancing the way we work.

Chief Executive Officer  
Susan Chen



---

# OVERSEAS QUARRY

PFM has set up a joint venture with Tajik company, developed two quarries in Tajikistan in 2017, respectively lime stone and white marble. For the source and cost control of raw materials, we will have more advantage of the supply quantity and quality stability of the project.



## Tajikistan Limestone Quarry



## Tajikistan Milan White Quarry



-Tajikistan Factory



- Milan White Cut to Size

# INDEX

SERVICES SPAN 01

DESIGN ABILITY 03

## REPRESENTATIVE PROJECTS

QATAR PUBLIC PROJECT 07

DOHA MODERN PALACE PROJECT 17

TAJIKISTAN SPA HAYOT 23

TAJIKISTAN PRIVATE VILLA 27

CHECHNYA FOUNTAIN & DECORATION PROJECTS 33

PRIVATE PALACE AND MAJLIS PROJECT 43

MOSCOW FAMOUS SINGER'S VILLA 47

CAYMAN ISLANDS VILLA 51

LE CHATEAU PALACE 55

KUWAIT PRIVATE VILLA 59

HOTEL BACHAUMONT 63

BAB AL AMOUD RESTAURANT PROJECT 67

DIAMOND TWIN TOWER 71

TAM DAO CASTLE 75

JAIPUR FIVE STAR HOTEL 79

RIYADH SHOWROOM 83

COPTIC ORTHODOX CHURCH 87

BEVERLY HILLS VOL.1 91

BEVERLY HILLS VOL.2 97

BEVERLY HILLS VOL.3 101

LINDA FLORA MODERN RESIDENCE 105

KAGAWA MODERN RESIDENCE 109

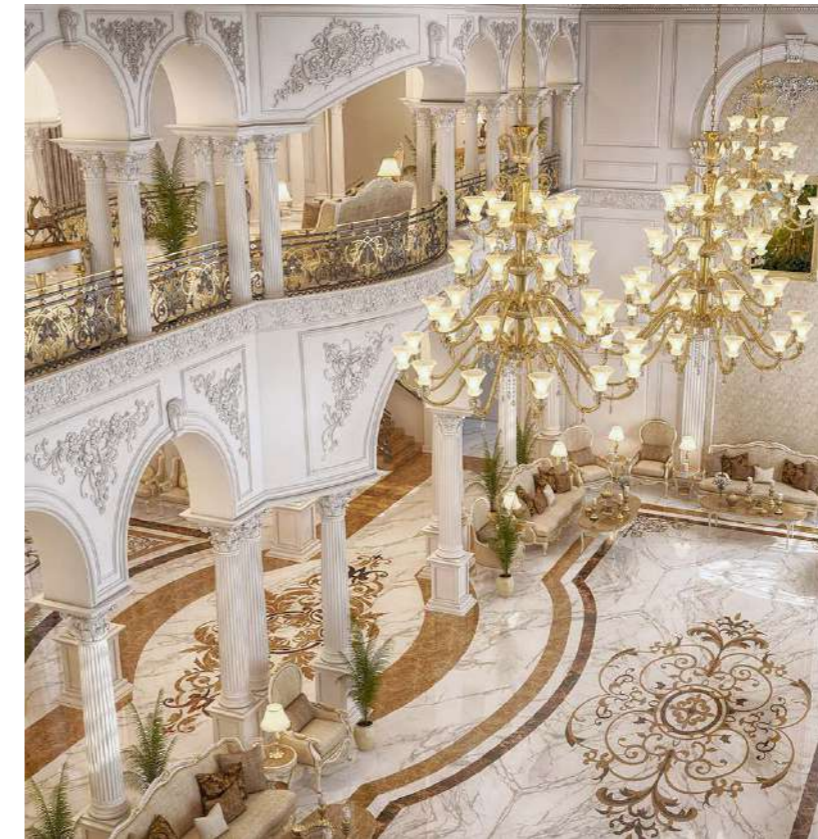
AUSTRALIA PRIVATE HOUSE 113

## SERVICES SPAN



### EXTERIOR & INTERIOR DESIGN

Exterior design is closely linked with both the interior design and landscape design. PFM design solutions integrate all the nuances that exterior and interior design must have! We converge the space planning, aesthetic design, sustainability, energy efficiency, lighting, ergonomics, acoustics, brand integration, color, material and furniture. As a result, a harmonious combination of interior, exterior, landscape design, and an aesthetically perfect image is created.



### BUILDING MATERIALS

PFM is the one-stop source for High-end villas, residential palaces and castles; construction projects. We carry a full line of landscape and building materials. Including granite exterior wall materials, marble flooring materials, glass curtain wall, and finishing material. In addition, we also provide a complete selection of interior decoration, doors and cabinets, curtain fabric, furniture, lamp fittings and so on.

### GENERAL CONTRACTING

PFM is ideally positioned to offer a full spectrum of construction oversight and project management services. From construction, utilities planning (air condition, culvert, electricity system), to executing the project with materials and a vision held to PFM's proven standard of excellence. The firm acts as each client's advocate and partner; in controlling costs and driving value.



### LABOR DISPATCHING

PFM has over 20 years of interior and exterior installation experience. To assist you in managing construction & installation worker scheduling. Including labor costs, efficiency with Snap Schedule and a reduction in scheduling issues that lead to increased operating costs, grievances, and high worker turnover.



# DESIGN ABILITY



Land Planning

## — EXTERIOR ARCHITECTURE DESIGN

The overall design of a building is the embodiment of a form of creation, the architectural creation. It depends mainly on the wishes of the project owner, the nature of the building and its internal functional and aesthetic needs, the budget available and the creativity of the architect. PFM take every project as a new challenge, interpreting the needs and wishes of the client.



Commercial Buildings



Hotel & Resort



Private Palace



Public Facility

## — INTERIOR 3D DESIGN

Our creative staff is comprised of exceptionally talented design professionals who have embraced PFM's philosophy of hospitality and residential design - to create a unique sense of space - and who are committed to perform effectively in order to provide our clients with the ultimate in well-conceived, innovative interior design solutions.

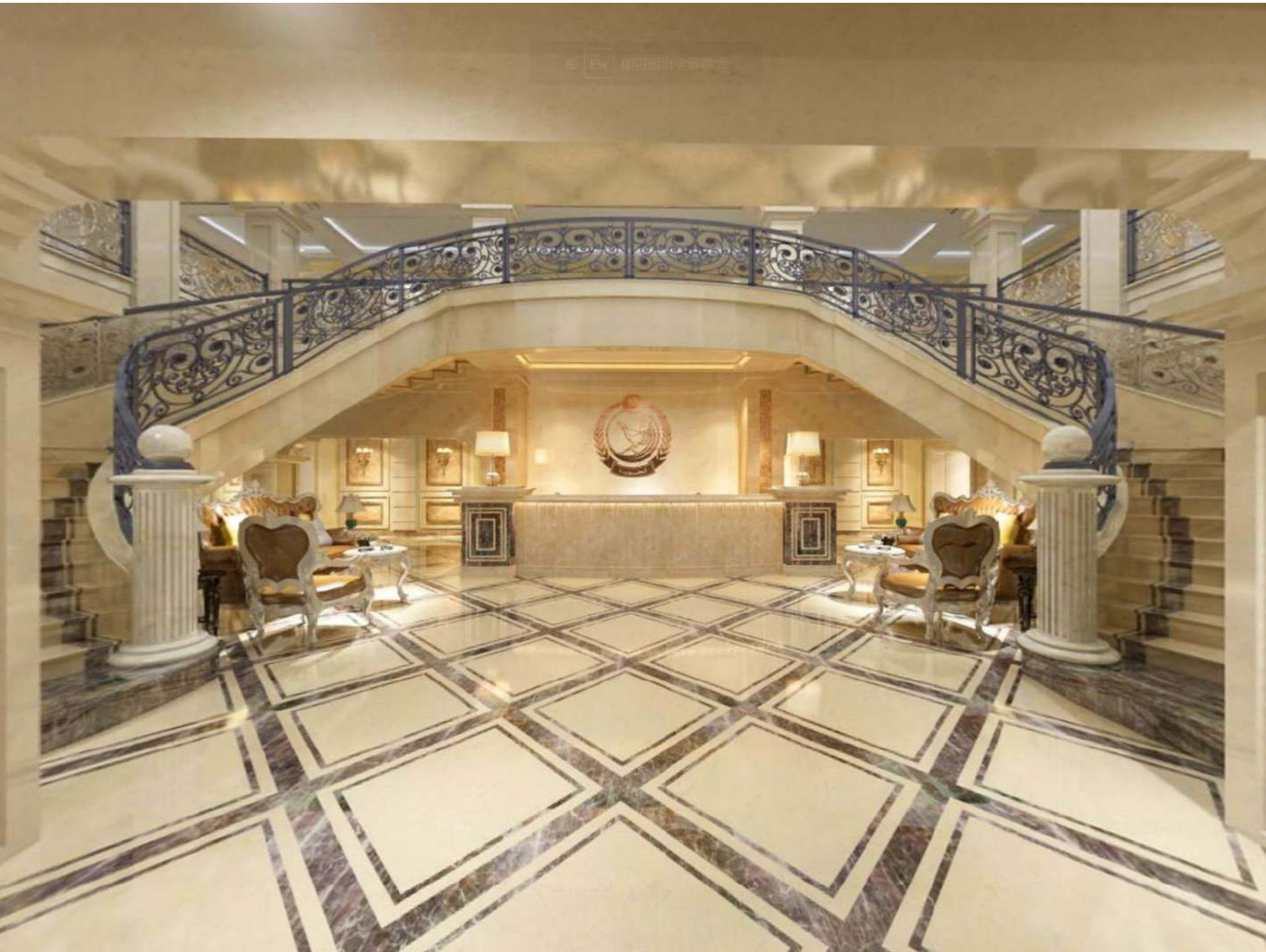


## — HIGH-END PRIVATE CUSTOM

Each design presents its own flavor, finish and experience that render a space in unique chapters of inspiration, history and creative endeavor. Therefore our team help our customer to ensure picking the perfect furniture, cabinets, decorative stuffs for their space and ambitions, and helping them achieve visual perfection with a lot less hassle, from idea to reality.







**REPRESENTATIVE  
PROJECTS**

## QATAR PUBLIC PROJECT



**LOCATION:** Doha, Qatar

**AREA:** 15684 m<sup>2</sup>

**DURATION:** 3 Months

### MATERIAL:

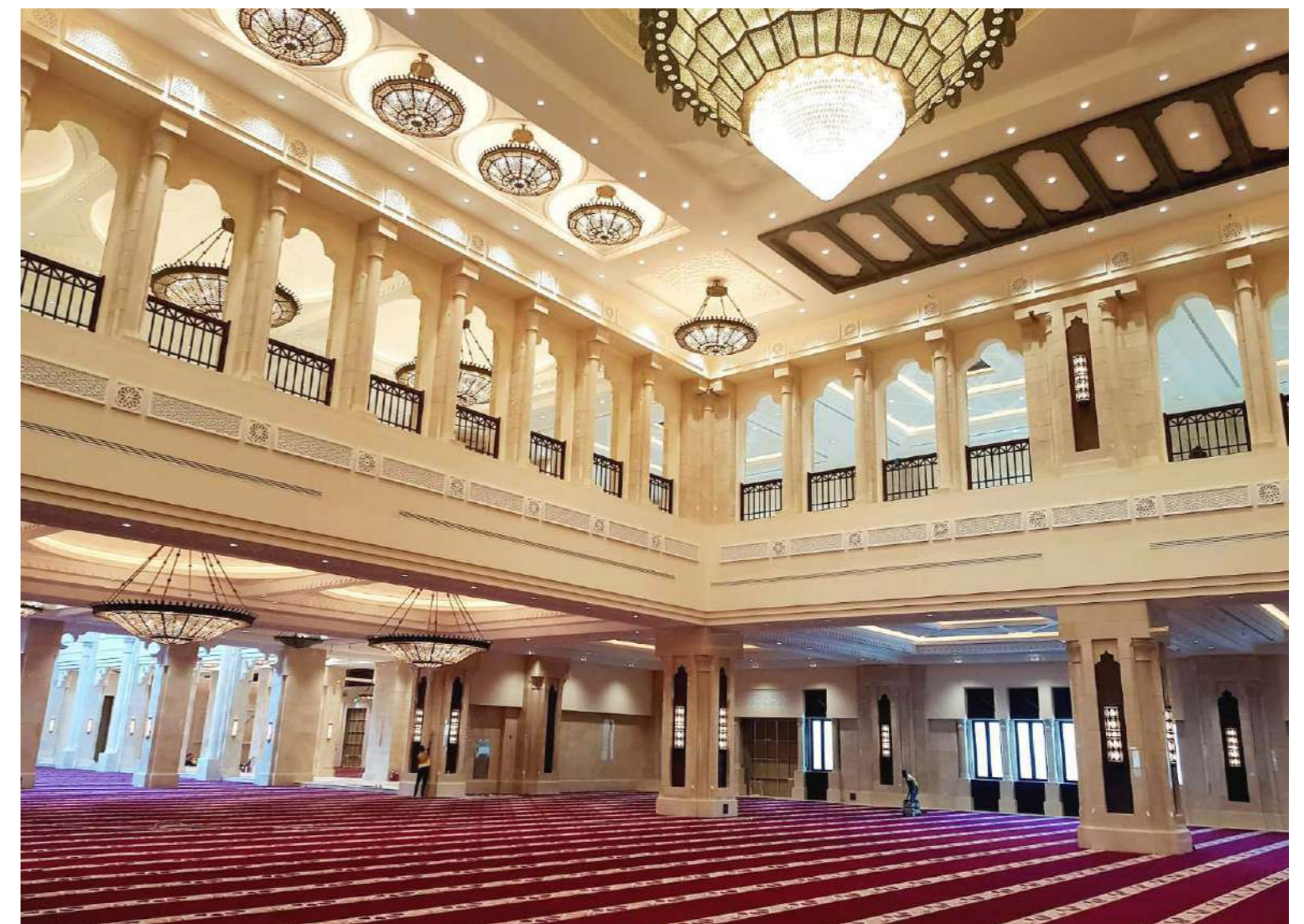
- Spanish cream marfil
- Dark emperador marble
- Rosso alicante marble
- Ariston greece marble
- Marble columns
- Relief carving
- Marble wall panel

### APPLICATION:

- Reception hall
- Curved staircases
- Exit staircase
- Office
- Mosque atrium
- Mosque hall

We represented as a subcontractor of a famous contracting company on year 2018, in Doha Qatar. Our cooperation was for a government project for Qatar's Installation of Gulf Area for 4 buildings and 1 mosque; including a mosque and four office buildings, one of them is for the Prime Minister of Qatar. We shipped more than 40 containers to the site within 2 months; catching the tight deadline. From the drawing confirmation, to the cutting to size. We perfectly achieved every target.

Other than material supply. We also provided labor for the installation. We brought the best craftsmen to install the marble tiles. Earning a great reputation for our quality materials, technical knowhow, and hard working spirit.



- Mosque Atrium



- Under Installation



- Installation Complete



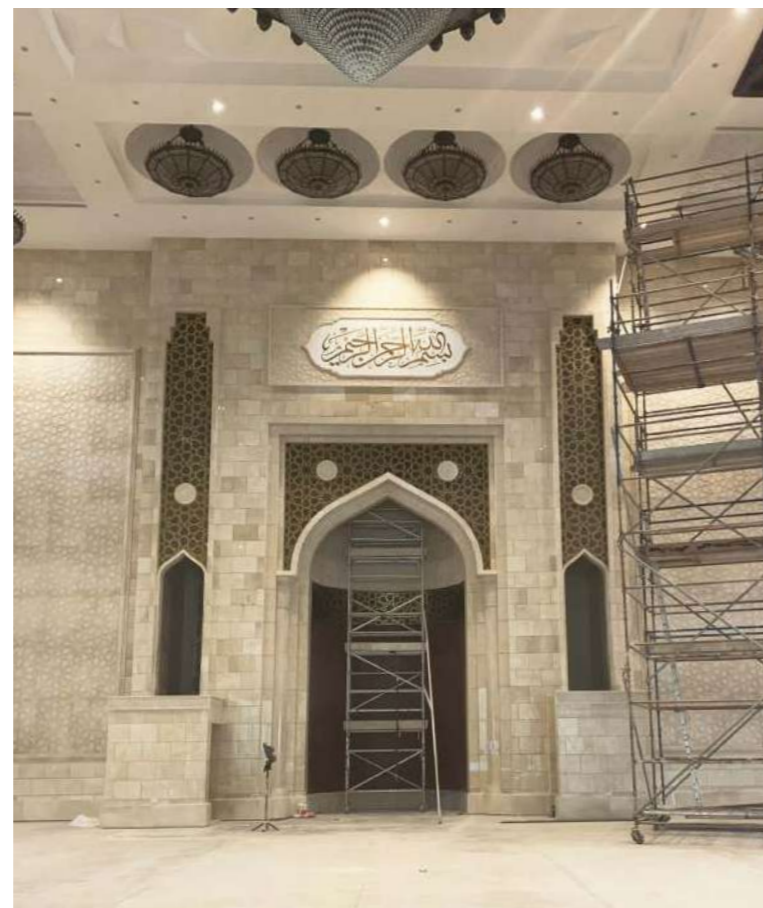
- Under Installation



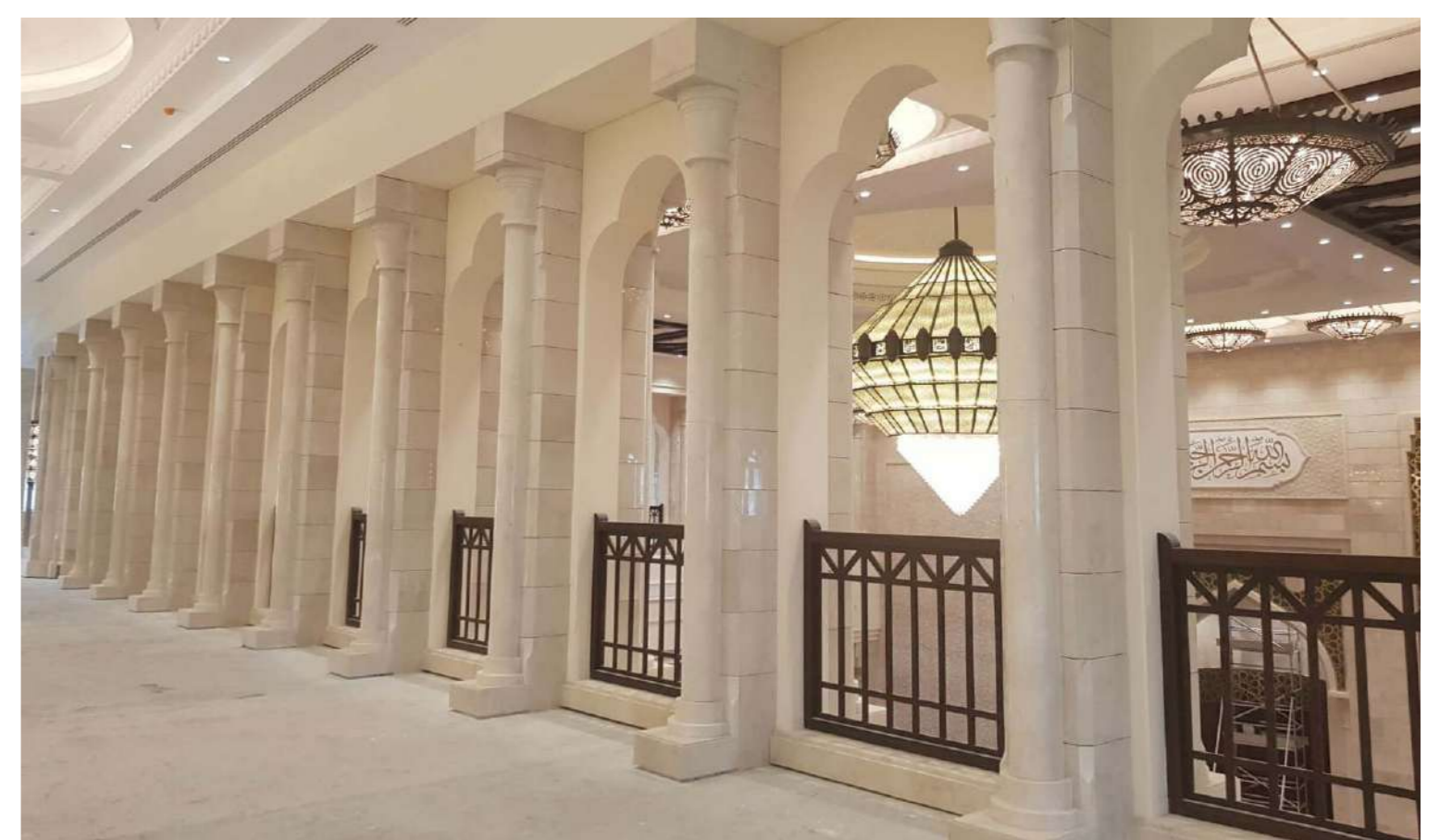
- Installation Complete



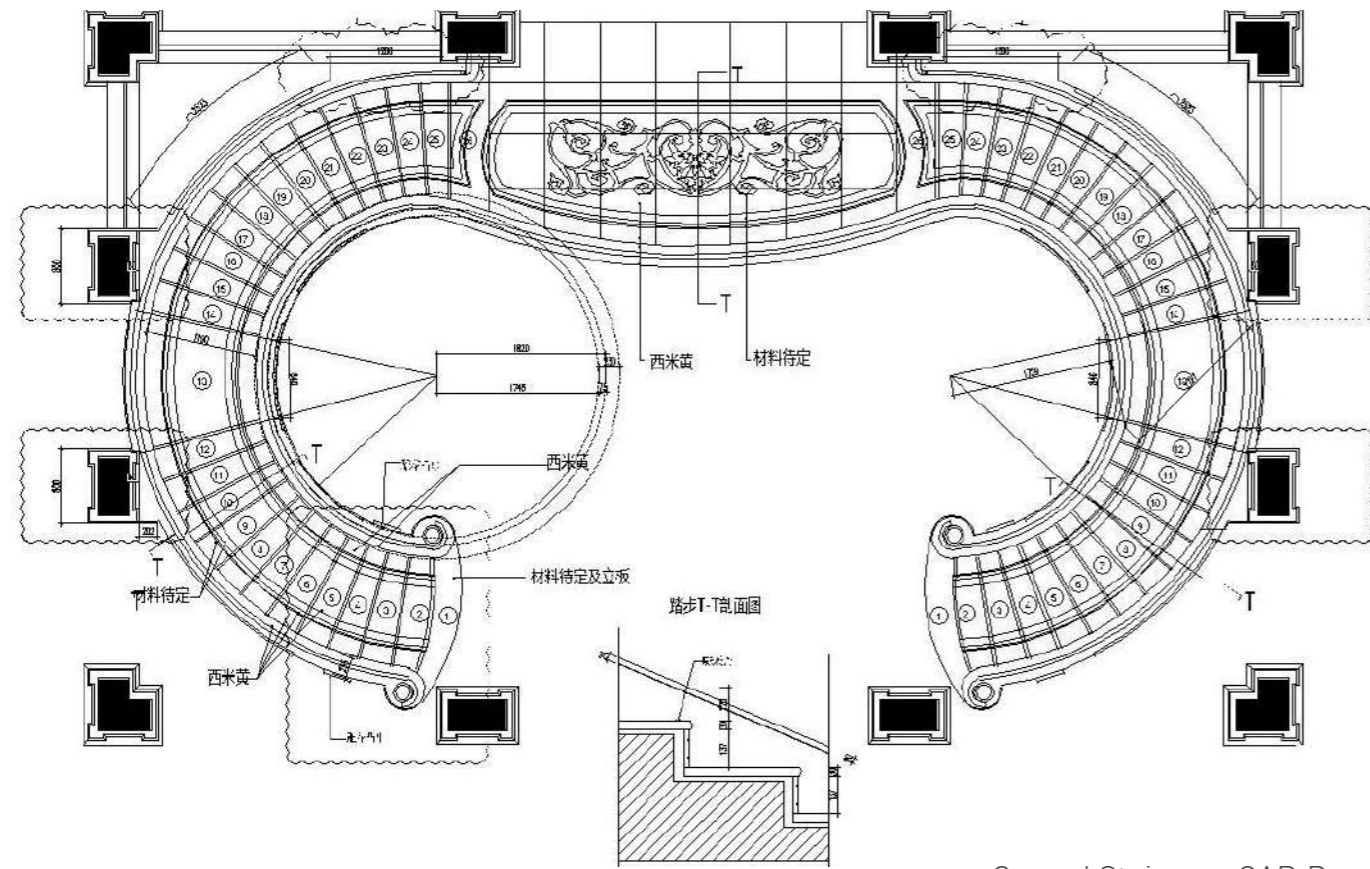
- Under Installation



- Installation Complete



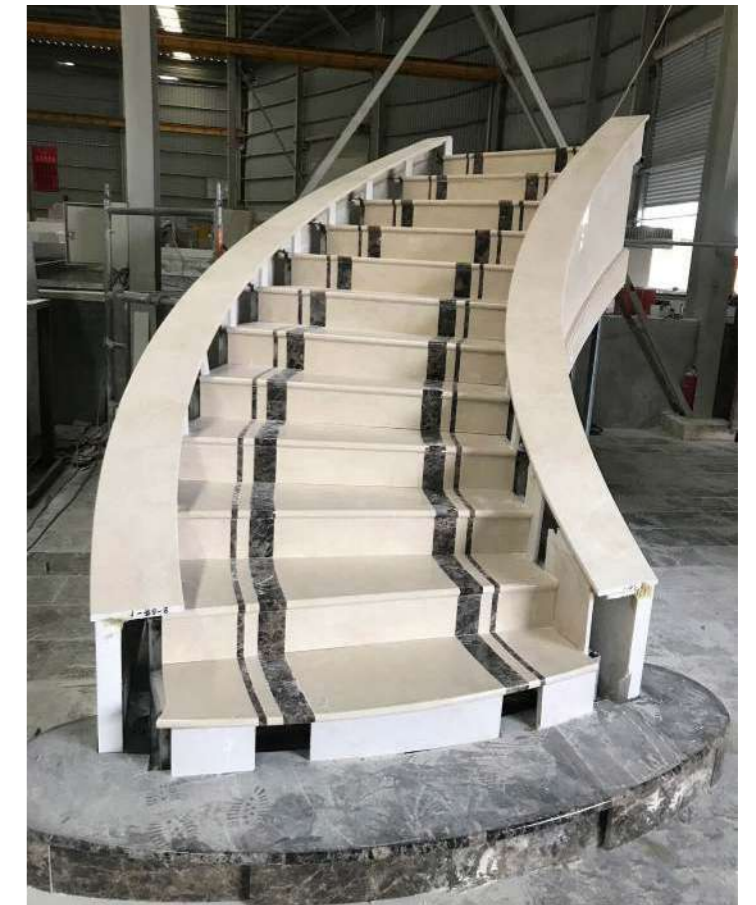
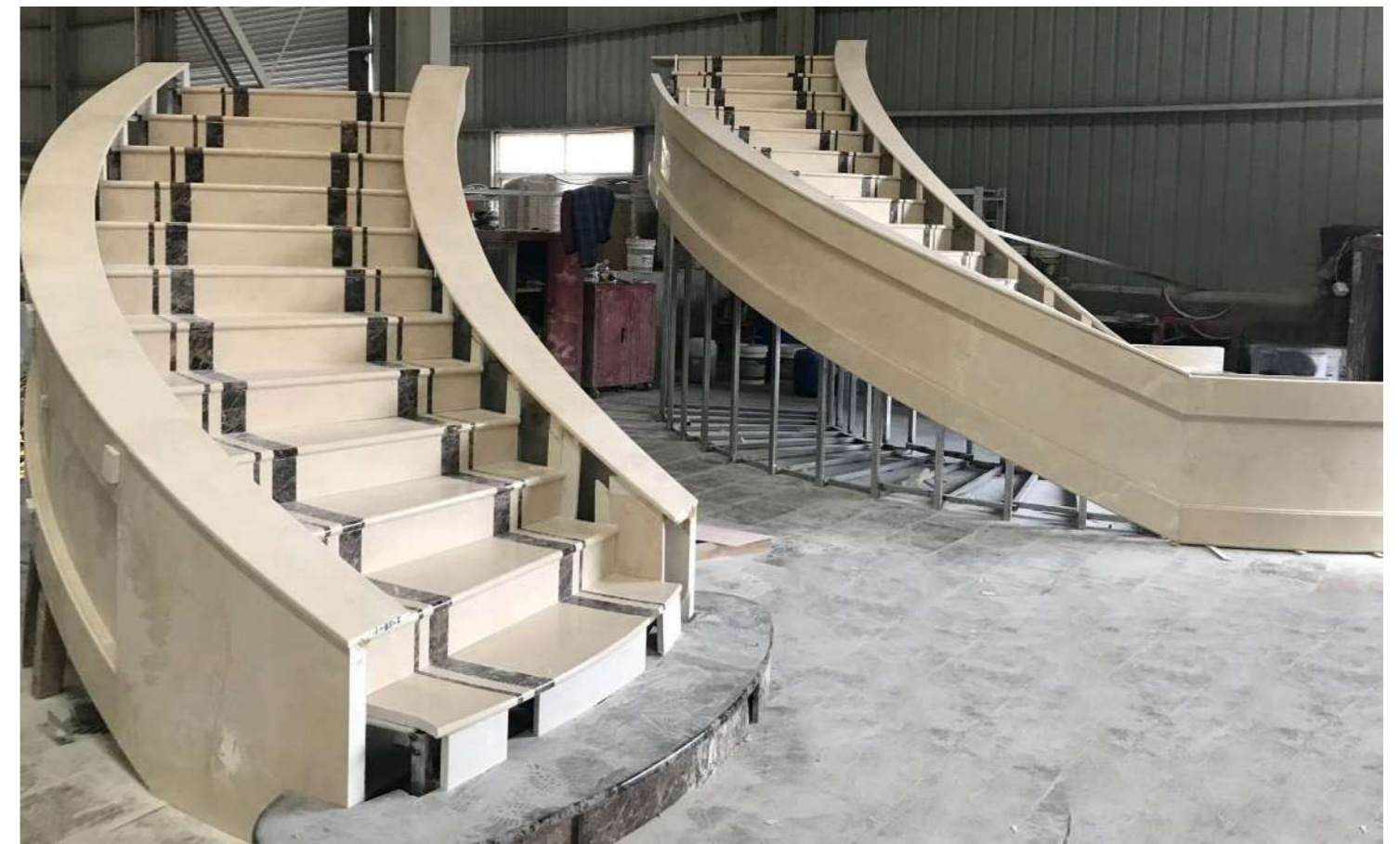
- Installation Complete



- Curved Staircase CAD Drawing



- Curved Staircase 3D Design



- Preassembly In Factory



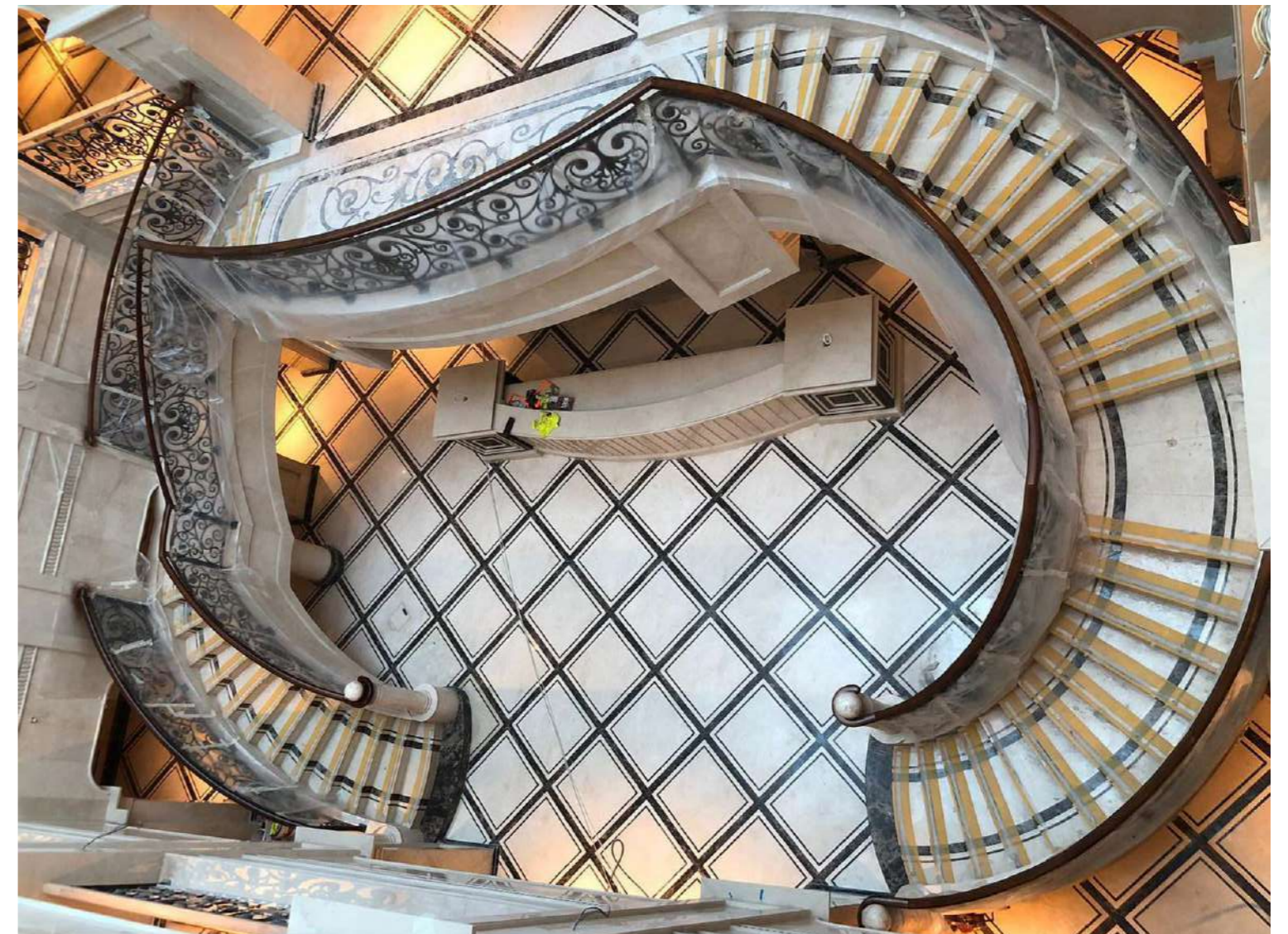
- Curved Staircase Site



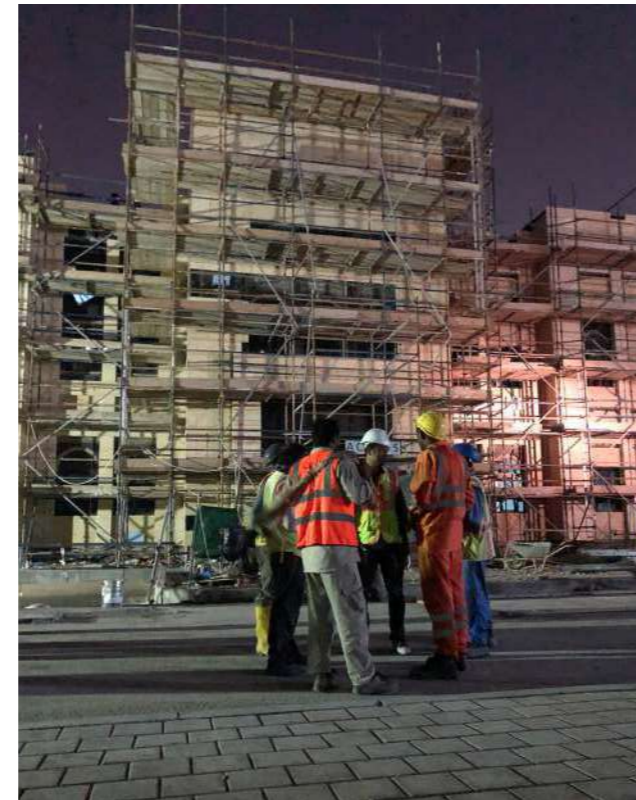
- Under Installation By PFM Team



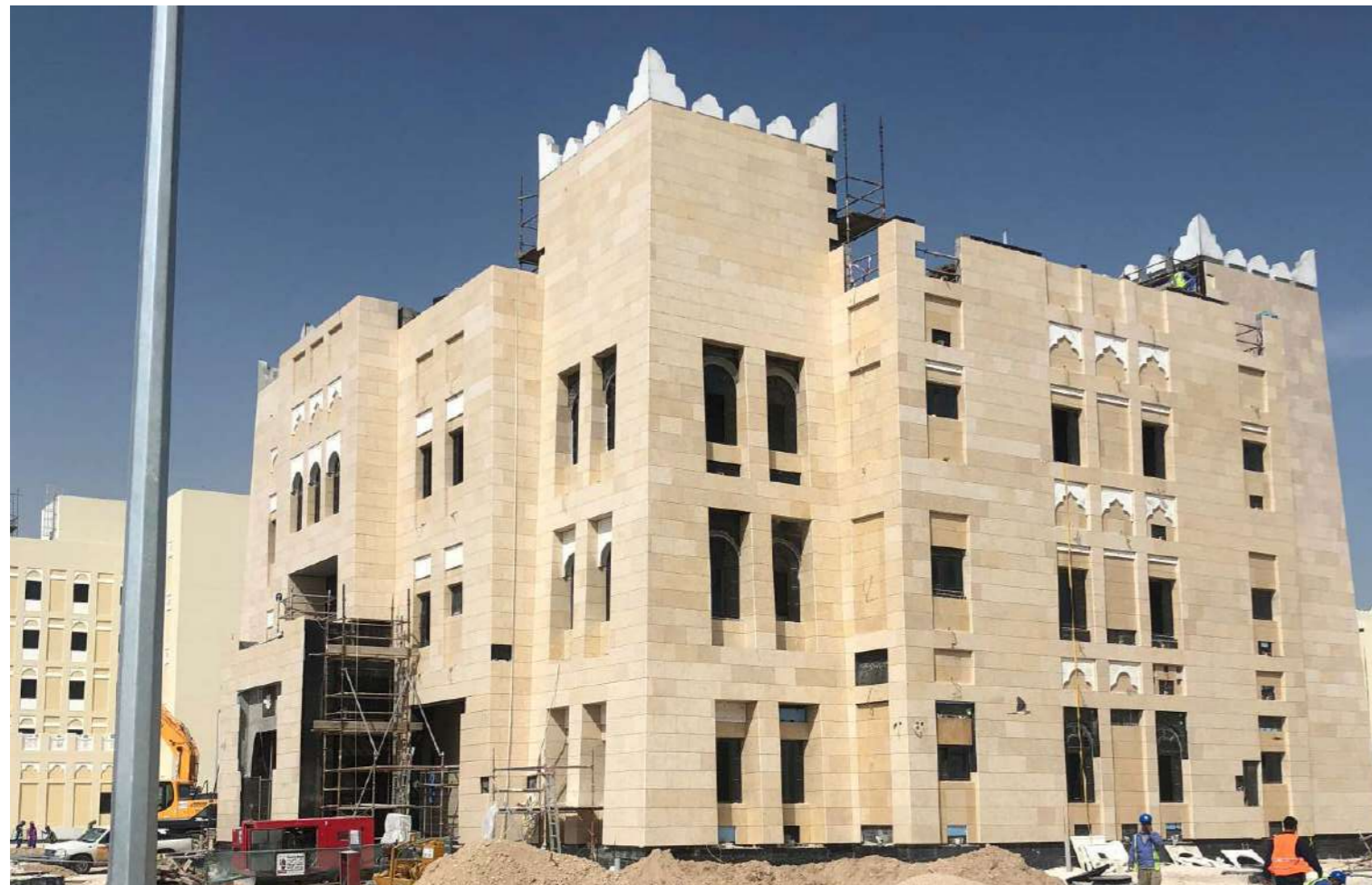
- Under Installation By PFM Team



- Installation Completed



- Exterior Wall Installation



- After Installation

## LABOR DISPATCHING



- Worker Safety Training Course Before Construction

# DOHA MODERN PALACE PROJECT



This big Palace is located in Markhiya area, near to West Bay, Doha, Qatar. It occupies 16,000 m<sup>2</sup> of land. The interior area is 11,000m<sup>2</sup>. It consists of two swimming pools, a majilis area, guest house, and the main palace.

We have taken on all of the exterior and interior construction work; including updating the pre-existing design. From the autumn of 2018, we started the installation work.

Our first step of work was to improve the interior designs based on the previous one; from Italy. Which was considered too elaborate. After deep communication with the client couple themselves. We offered several proposals to meet their requests. The clients were very happy and satisfied with the new style. In October of 2018, we sent the first 8 workers to start with the interior gypsum wall installation. Followed by 5 workers for facade wall cladding, and 4 workers for window installation. All the materials were shipped from China. Including all the tools, steel frames, marble, granite tiles, plaster powder and so on.

The project is still under construction. PFM puts all it's effort into fulfilling the satisfaction of the clients demands. We do our work with honor!

**LOCATION:** Al Markhiya Doha, Qatar

**AREA:** Total 160000 m<sup>2</sup>  
Interior area is 11000 m<sup>2</sup>

**DURATION:** 6 Months (still under construction)

**MATERIAL:**

- G682 granite
- Cherry blossom granite
- Volakas white marble
- Italy botticino classico
- Wood flooring
- Ceramic tile
- Diatom mud

**APPLICATION:**

- Basement
- Ground floor
- First floor
- Exterior wall
- Swimming pool



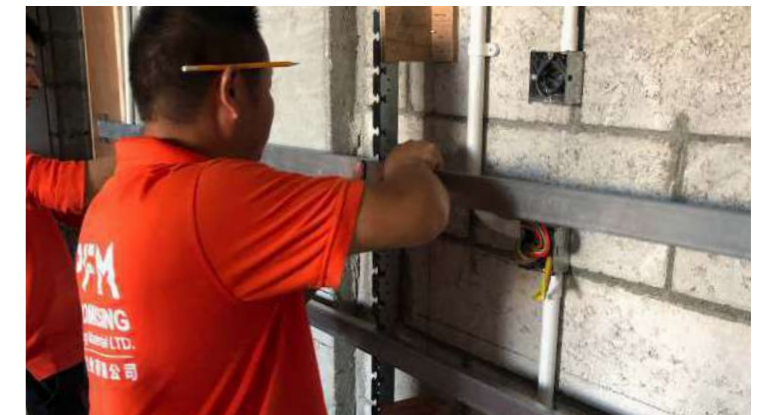
- Bird Eye View



- Living Room Design



- Design



- Bedroom Design

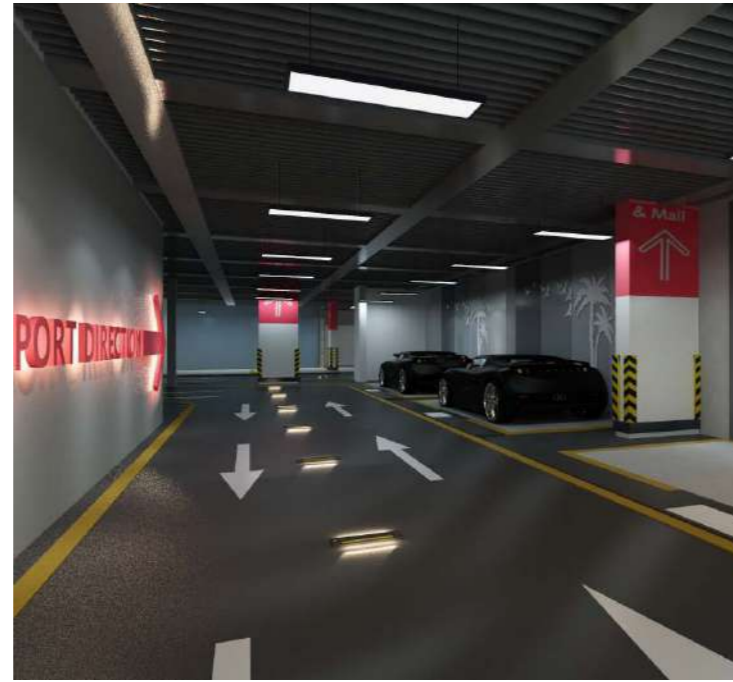


- Installation





- Roof Design



- Parking Area Design



- External wall and window installation



- Swimming Pool Design



- Folding Door Installation

## TAJIKISTAN SPA HAYOT



**LOCATION:** Dushanbe, Tajikistan

**AREA:** 5,000 m<sup>2</sup>

**DURATION:** 4 Months

### MATERIAL:

- Tan brown granite
- Chinese white granite
- Mother pearl mosaic
- Volakas white marble

### APPLICATION:

- Exterior facade
- Sauna room
- Leisure room
- Fitting room
- Shower room
- Stairs

Spa Hayot is one of Tajikistan's most famous luxury spas. The building's exterior wall has a total area of 5,000 m<sup>2</sup>. This project used a multitude of granites; slabs, pillars, stone lines, and sculptures. The quality of the materials went through the PFM quality control program.

PFM sent 45 skilled workers, and a project manager to guide and implement the on-site installation. The building was completed and was consistent with its professional, high-efficiency, and estetic stone work. This is a constant theme on how PFM completes its projects.

The PFM CEO, Susan Chen, was invited to attend the opening ceremony. She was praised by the President of Tajikistan, and other dignitaries; about design, quality of materials, and craftsmanship.



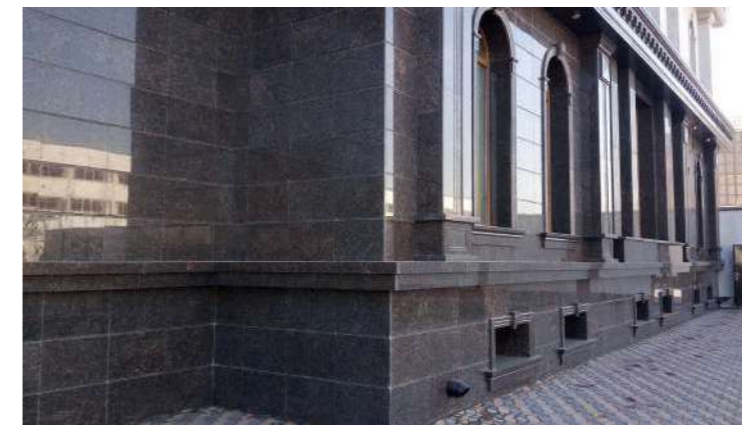
-Original Design



-Bird Eye View



-Before Installation



-Exterior Facade



-Under Installation



- Miss Susan Chan was praised by Mr. President of Tajikistan in the ceremony

## TAJIKISTAN PRIVATE VILLA



**LOCATION:** Dushanbe, Tajikistan

**AREA:** Exterior 5000 m<sup>2</sup>  
Interior 3000 m<sup>2</sup>

**DURATION:** 6 Months

### MATERIAL:

- Granite
- Marble
- Marble water jet medallions
- Glass mosaic
- Marble column

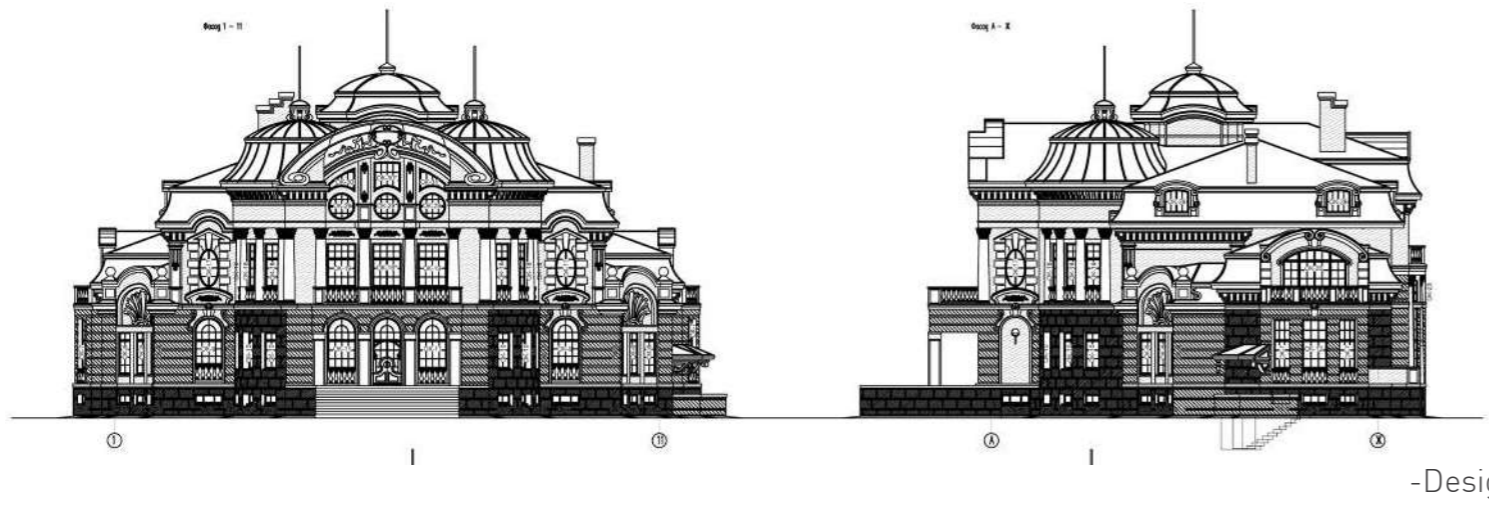
### APPLICATION:

- Exterior wall cladding
- Window set
- Door frame
- Swimming pool
- Interior flooring

This project is a private luxury villa. For this project, PFM provided 25 skilled workers and a project manager to participate in production, design, construction and site management. It required 2 months of production and 4 months of installation. PFM has again been successful in the indoor and outdoor installation of the main building and guest rooms. Our customer satisfaction was demonstrated by their happiness in our finished project.



-After Installation



-Design



-Under Installation



-Under Installation



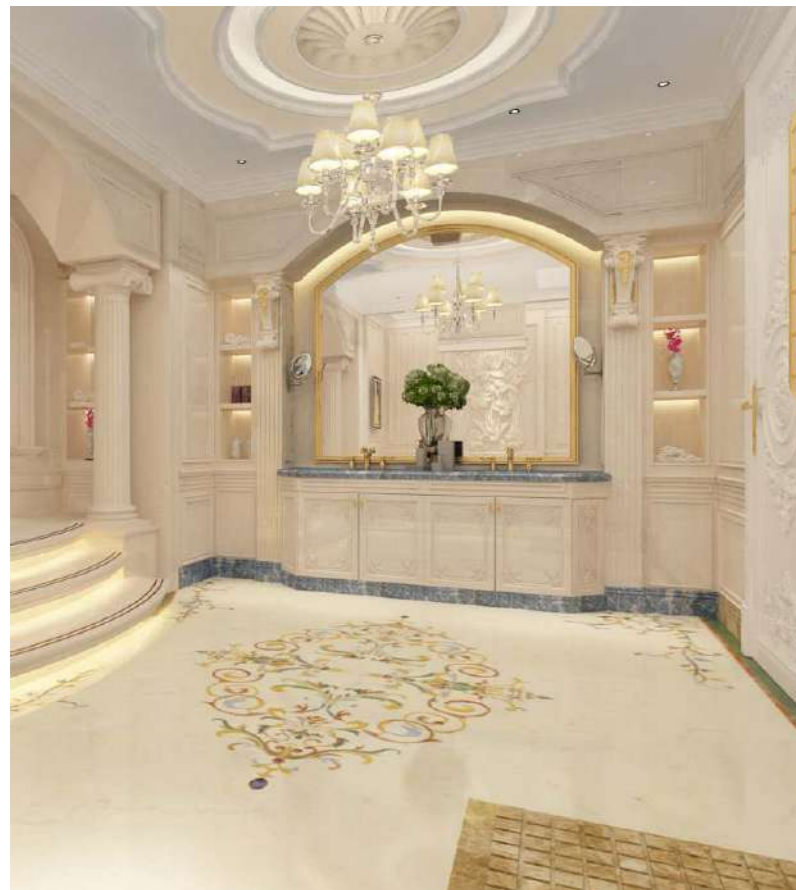
-After Installation



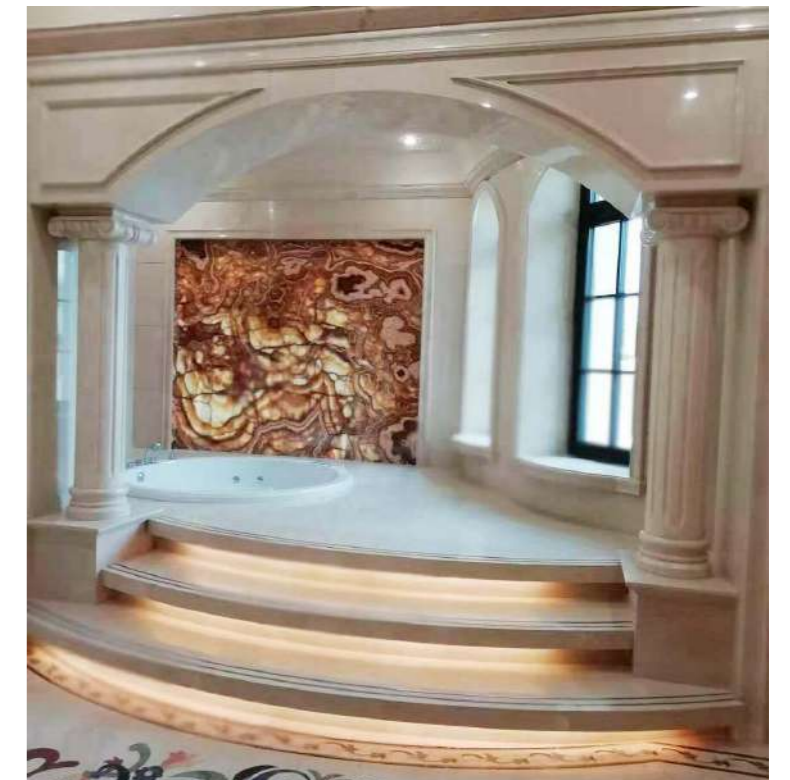
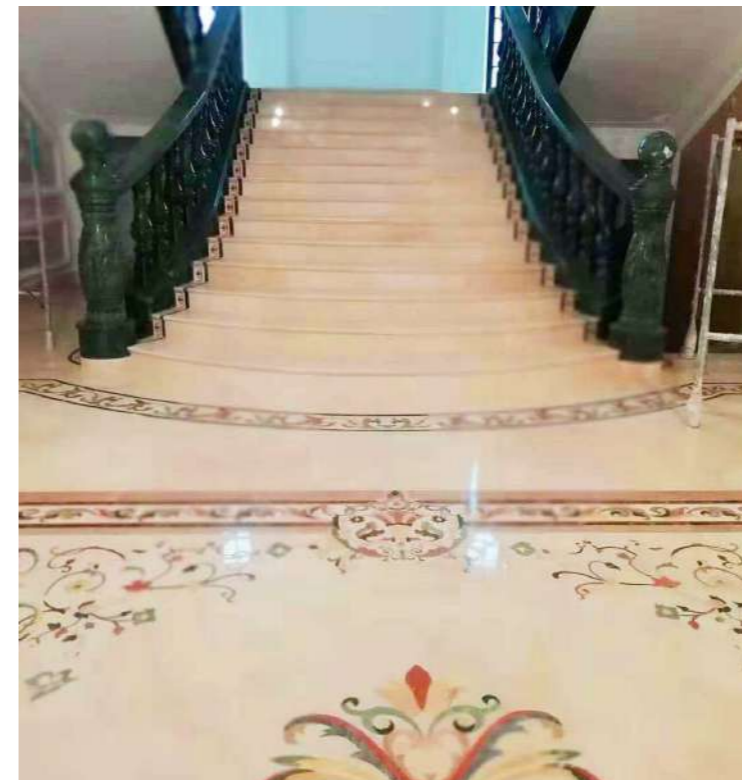
-Indoor Swimming Pool Design



-Installation



-Bathroom Design



-After Installation

## CHECHNYA FOUNTAIN & DECORATION PROJECTS



**LOCATION:** Grozny Chechnya, Russia

**AREA:** 3300 m<sup>2</sup>

**DURATION:** 6 Months

### MATERIAL:

- Chinese white marble
- Chinese yabai white marble
- Spain cream marfil
- Apple green onyx
- Rosa levanto marble
- Marble medallion

### APPLICATION:

- Water fountain
- Fireplace
- Interior flooring & wall
- Interior columns
- Swimming pool
- Inlay bathtub steps

Our Grozny (Chechnya) project customer ordered a large fountain with installation. After seeing our hard work and dedication, they release ordered two swimming pools, and ten sets of bathroom marble material; with installation work.

We helped to update the original 3D design and shop drawings for the customer. Our experienced designer turned the medallion pattern from design into a real product. Combining different natural stone colors together, to reflect the design spirit.

We also sent our engineer to the site; to do the field measurements. Ensuring each corner was a perfect match. Commitment, responsibility and efficiency is and will always be PFM's belief.



- Swimming Pool Design



- Rest Area Design



- Master Bathroom Design



- Bird Eye View



- Guest Bathroom Design



- Guest Bathroom Design



- Design



- Finished Product



- After Installation





- Under Installation By PFM Team



-Under Installation By PFM Team



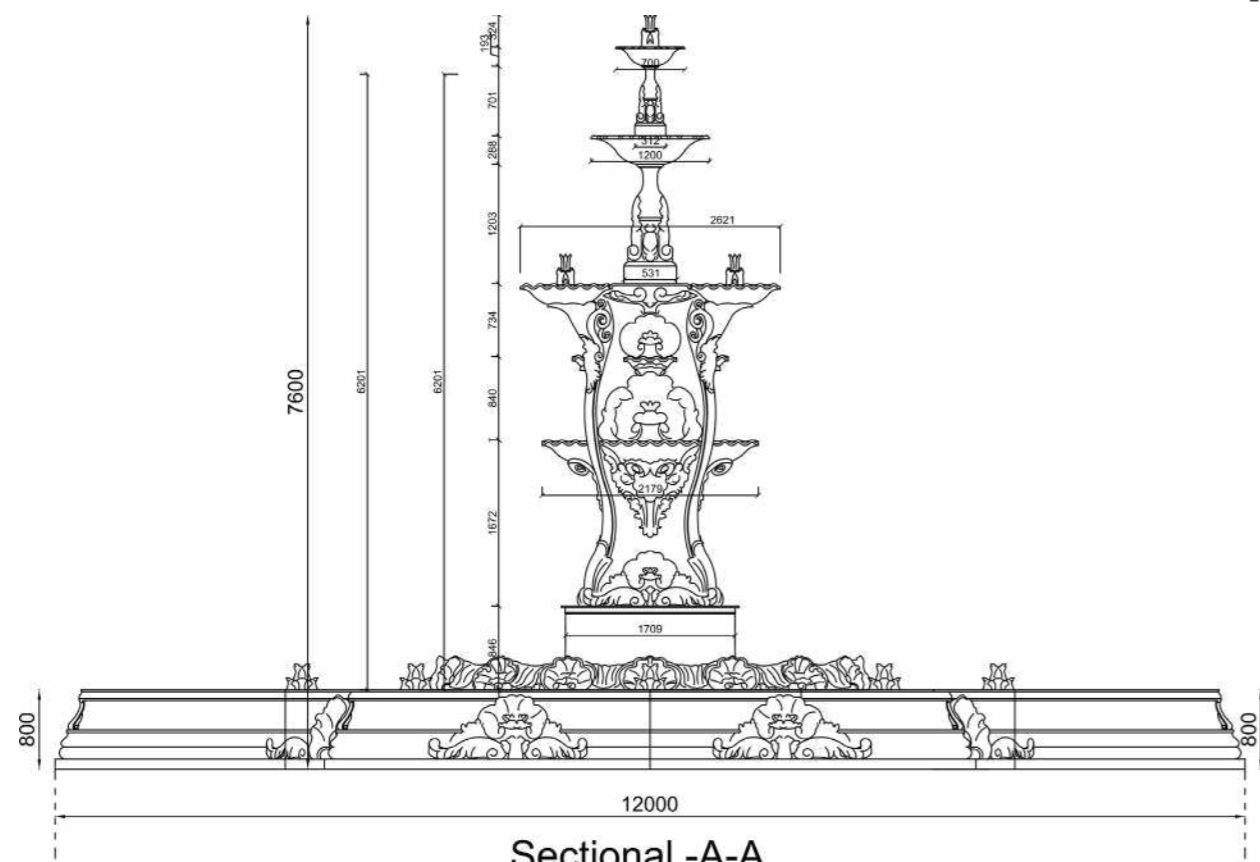
- 3D Design



- Preassembly



- Finished Sculpture



- CAD Design



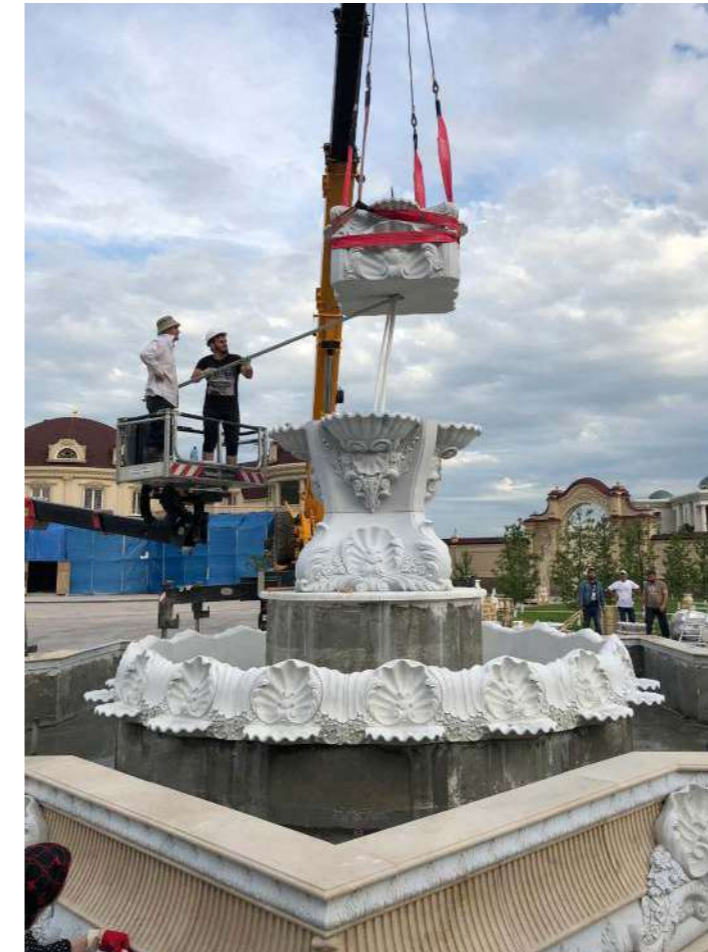
- CNC Machine Carving



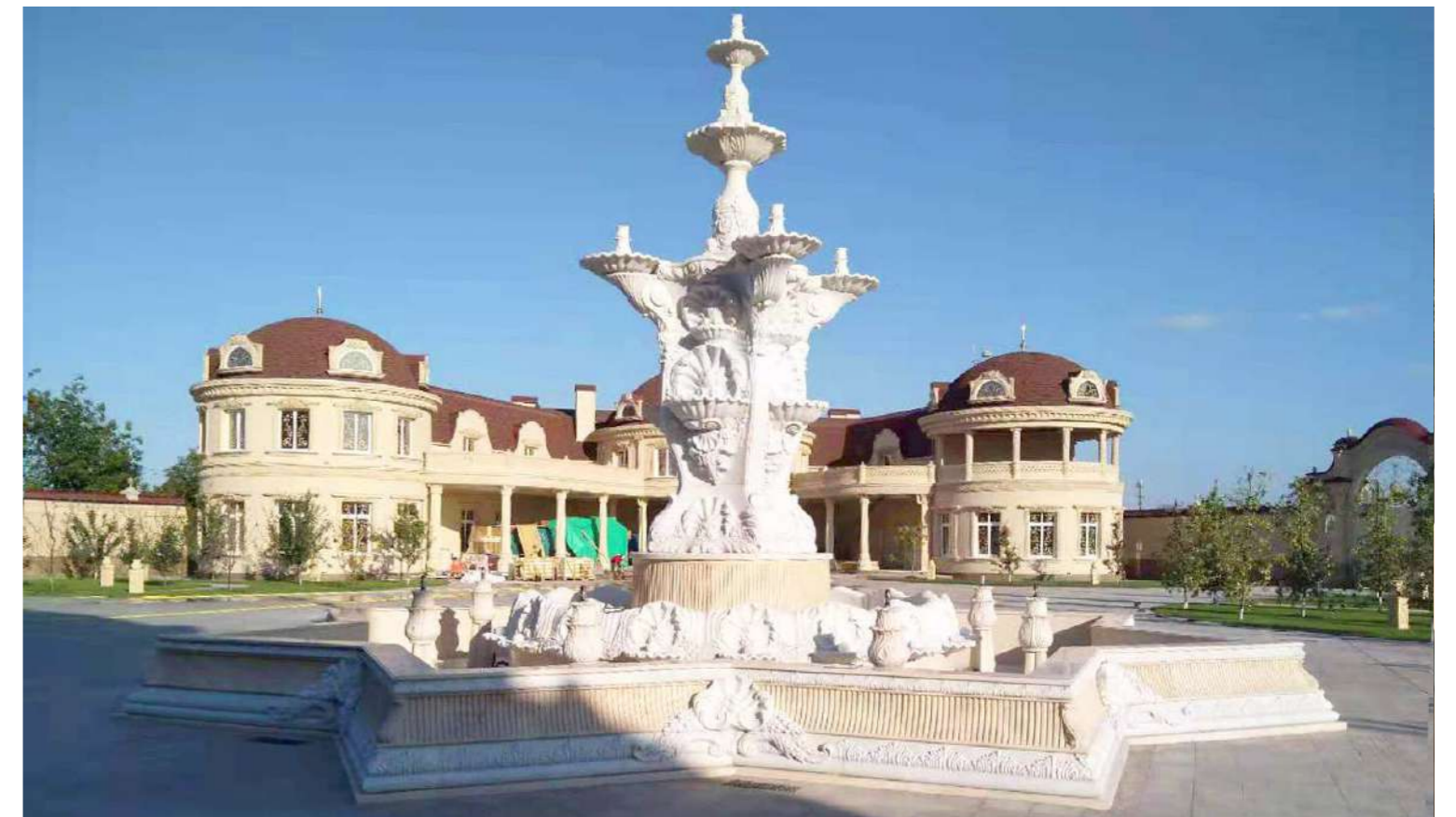
- Hand Carving



- Base Frame Construction



- Installation



- After Installation

# PRIVATE PALACE AND MAJLIS PROJECT



**LOCATION:** Doha , Qatar

**AREA:** 6,000 m<sup>2</sup>

**DURATION:** 2 Months

**MATERIAL:**

- Nano glass tiles
- Water jet medallion
- Nano glass pillar

**APPLICATION:**

- Interior floors
- Interior walls
- Lift frames

This luxury palace is unique in design as per our customers specifications. There are 2 parts in this project: palace and majlis. The area of stone needed for the palace is about 10,000 square meters, The majlis was 6,000 square meter. The main material of the project is nano glass stone with the highest quality, which is used in the ground of public area and bathroom. PFM's project manager and craftsmen completed this installation in 2 months.



-Family Setting Design



-Mater Bedroom Design



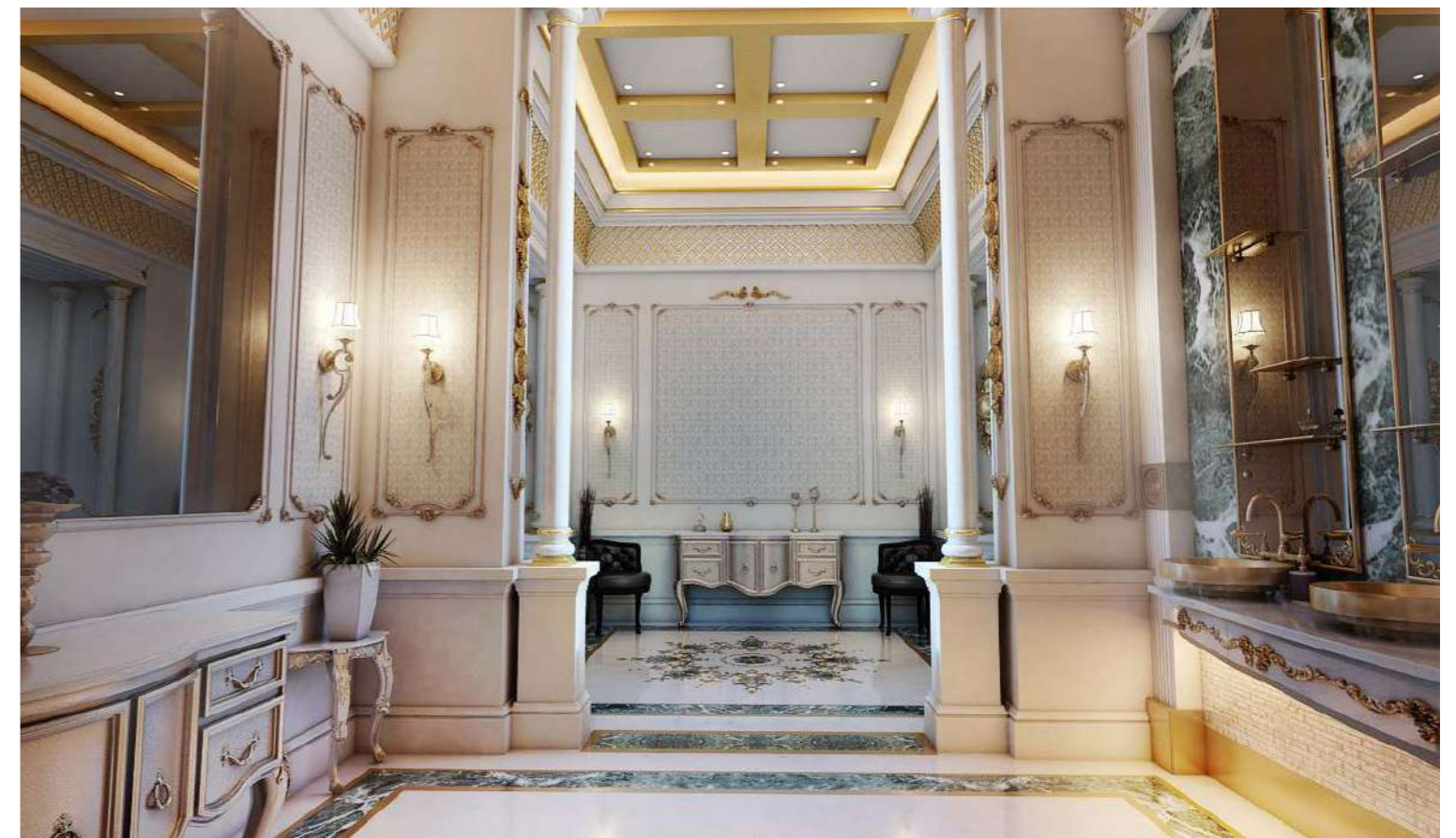
-Majlis Design



-Majlis Bathroom



-Installing



-Majlis Bathroom Design

## MOSCOW FAMOUS SINGER'S VILLA



**LOCATION:** Moscow, Russia

**AREA:** Total 4000 m<sup>2</sup>

**DURATION:** 6 Months

**MATERIAL:**

- Marble
- Granite
- Mosaic

**APPLICATION:**

- Marble floor
- Marble wall
- Granite facade
- Swimming pool mosaics

This marvelous 4000 m<sup>2</sup> house belongs to a famous Russian singer Alsou. It's located in suburb of Moscow, which is described as Beverly Hills of Russia. The neighbor of the house is President Putin's daughter. Alsou and her husband Yan Abramov who is banker and businessman, are both famous in Russia.

We are honored to have the chance to be involved in this project in 2014, PFM provided marble material for interior floor and wall, including marble tiles, mosaic, medallions and so on.



-Exterior Facade



-Molding Details



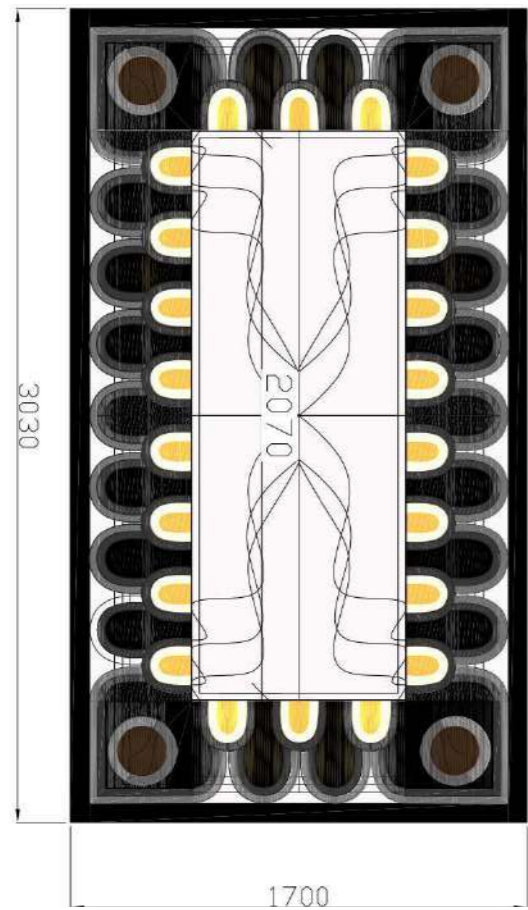
-Design



-After Installation



-Finished Product



-Design

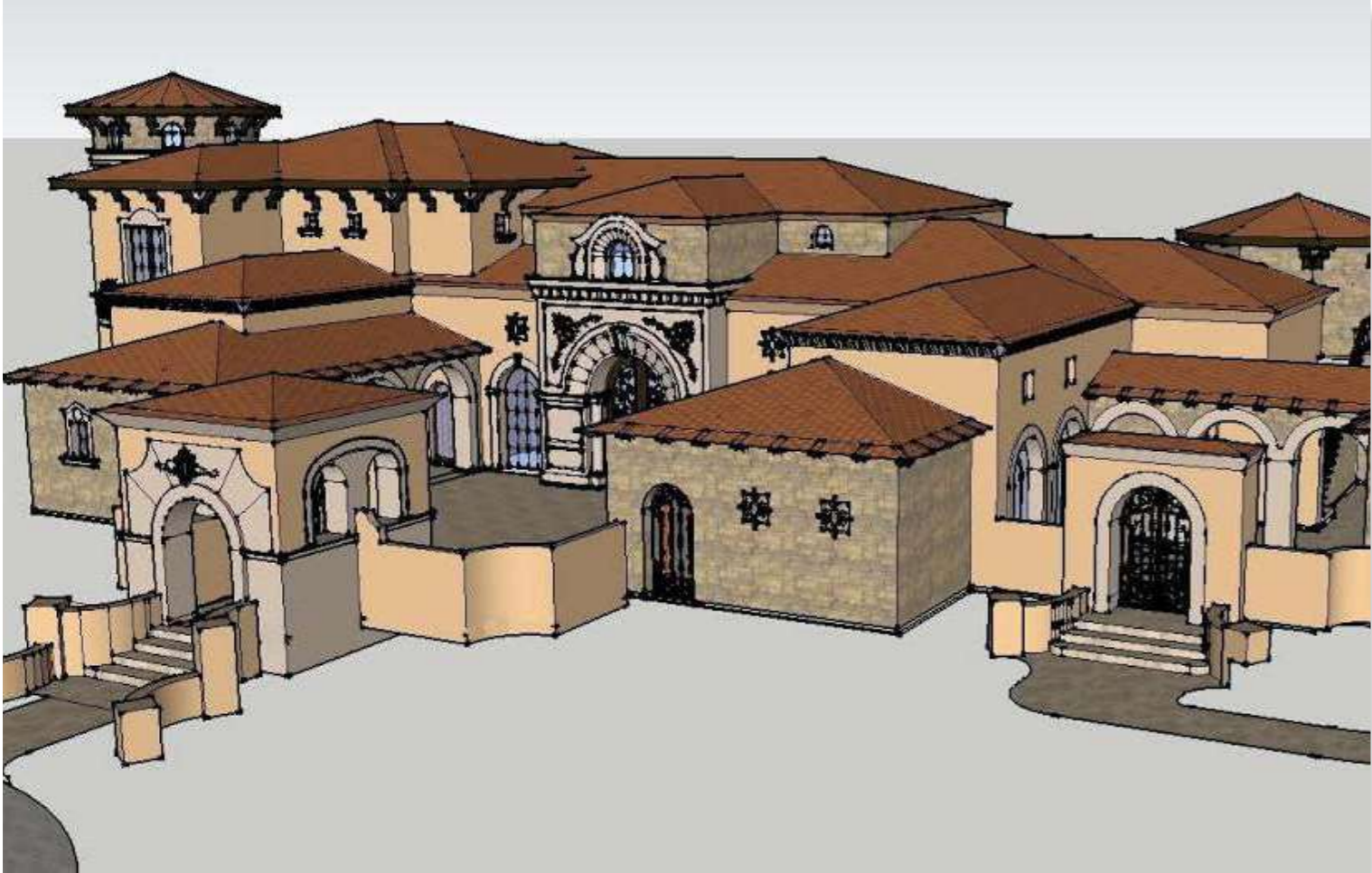


-After Installation



-After Installation

# CAYMAN ISLANDS VILLA



**LOCATION:** Cayman Islands

**AREA:** 1,824 m<sup>2</sup>

**DURATION:** 2 Months

**MATERIAL:**

- Molding
- Baluster
- Fountain
- Culture Stone
- Columns
- Fireplace
- Medallion
- Sculptures

**APPLICATION:**

- Exterior wall cladding
- Interior floor
- Corridor

This private villa is one of the most exclusive and luxurious villas in Grand Caymans. The owner had a very high expectation for stone quality and carving technology. He compared dozens of companies and decided PFM. His eye for detail and quality is exactly what PFM offers. The sculptures were of the highest quality and detail. Upon the completion of the project the customer did a final inspection. He found no deficiencies and was overjoyed at our quality.

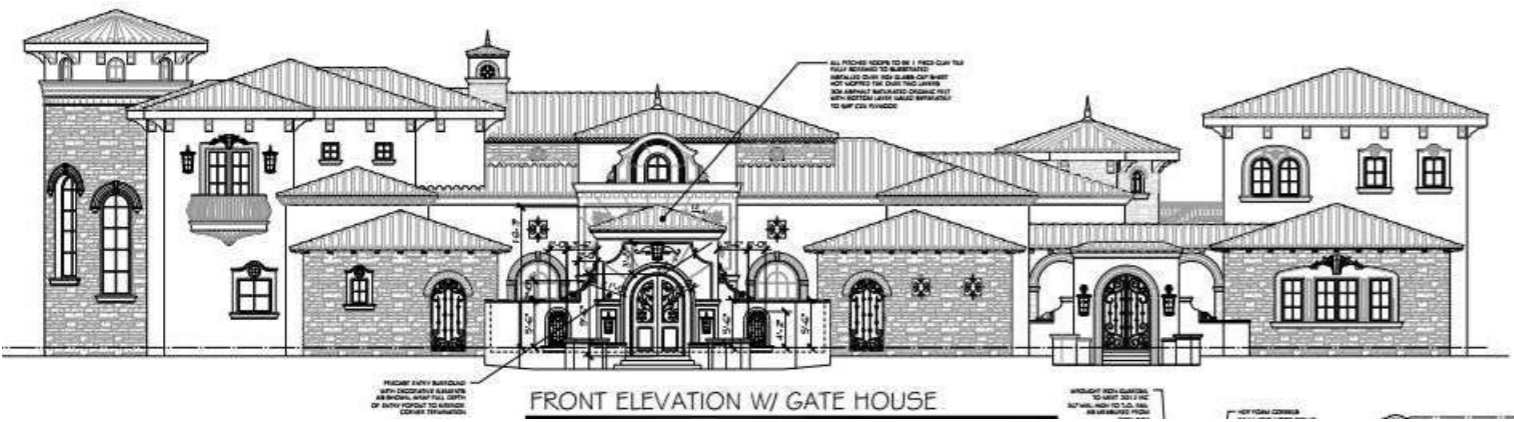


-Front Entry



-Facade Molding





-Design



-Facade



-Backyard



-Marble Column



-Outdoor Swimming Pool



-Corridor Design

# LE CHATEAU PALACE



**LOCATION:** Bucharest, Romania

**AREA:** 500 m<sup>2</sup>

**DURATION:** 1 Months

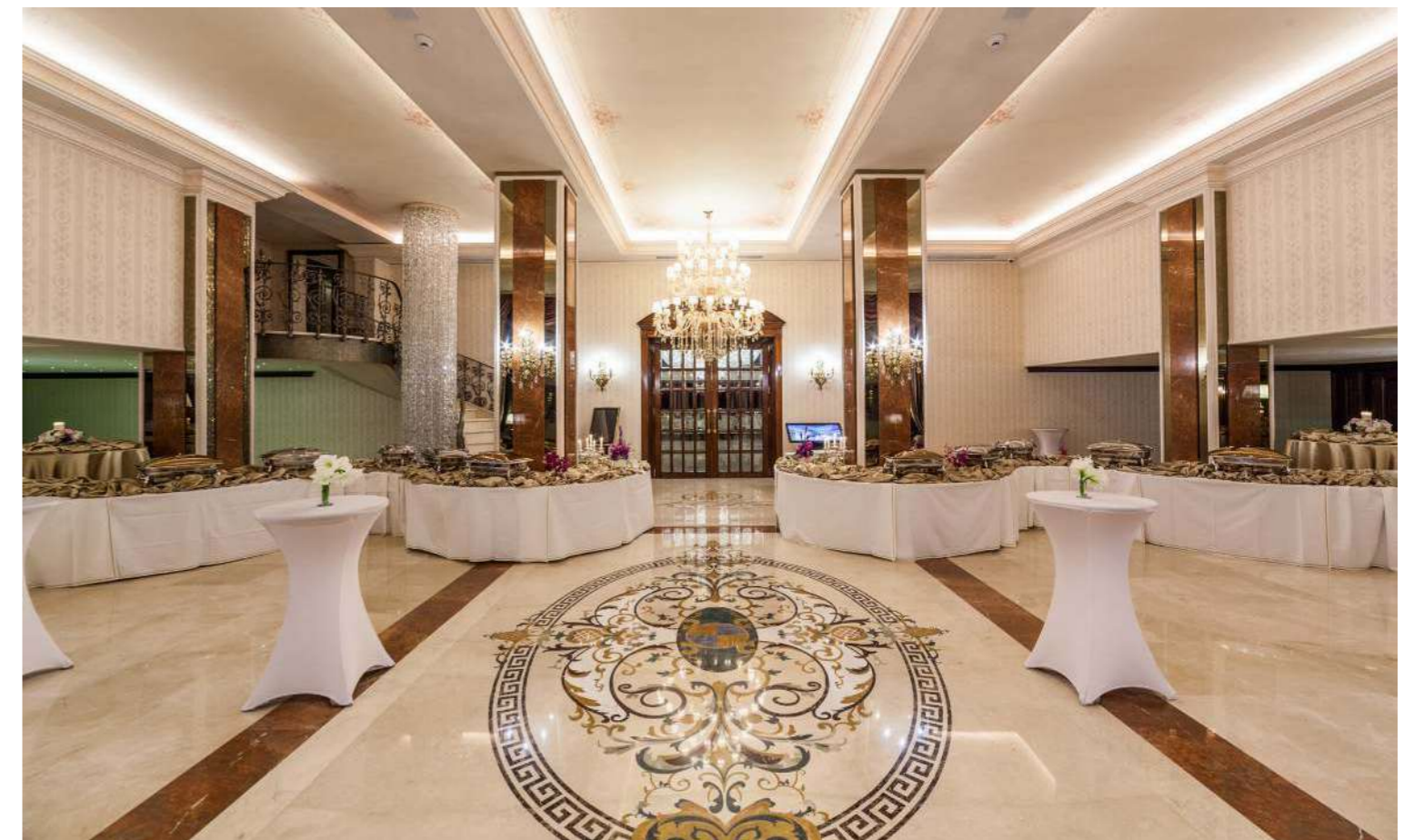
**MATERIAL:**

- Sodillite blue
- Spanish cream marfill molding
- Spanish cream marfill tiles
- Water jet medallion

**APPLICATION:**

- Banquet hall
- Conference room
- VIP room
- Dining hall

Le Chateau Palace is an interior decoration project undertaken by PFM in 2015. From the design stage, the customers goal was to meet and exceed the expectations of an exclusive and royal clientele. The future room was the entrance to the palace. Our use of 8 large water jet marble flooring tile in the entirety hall was breathtaking. Along with a number of semi-precious stones, including a royal favorite “The Blue Lapis Stone”, gives the hall a majestic and exquisite look.

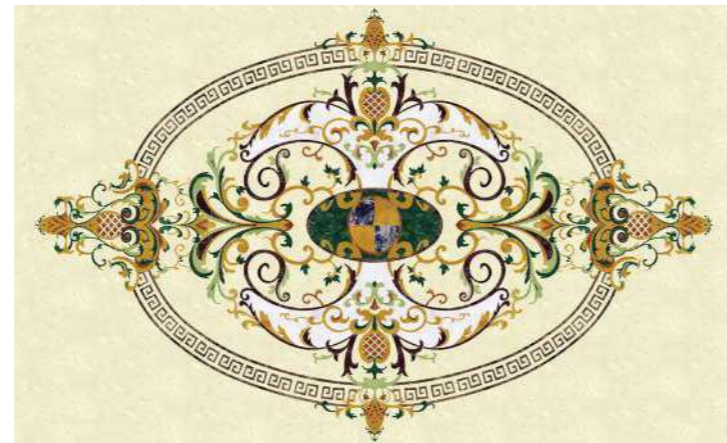


-Medallion After Installation

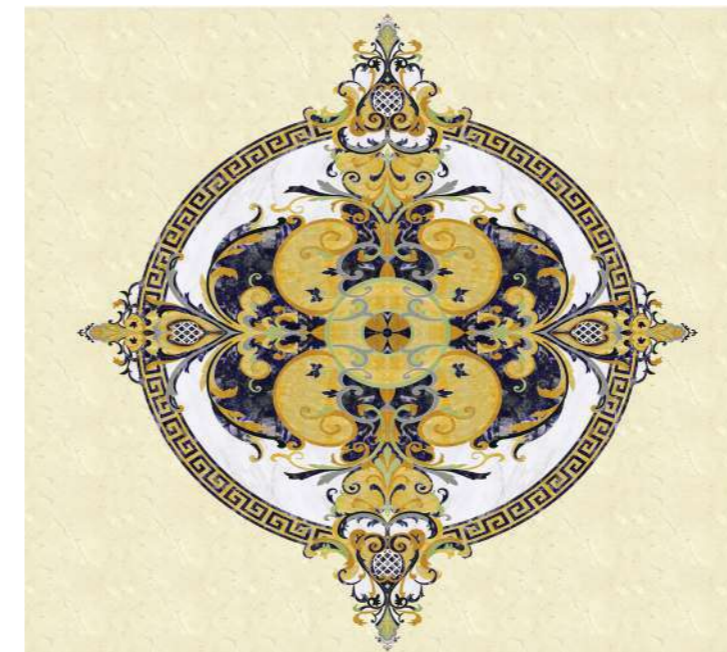




- "Le Chateau" Medallion Design



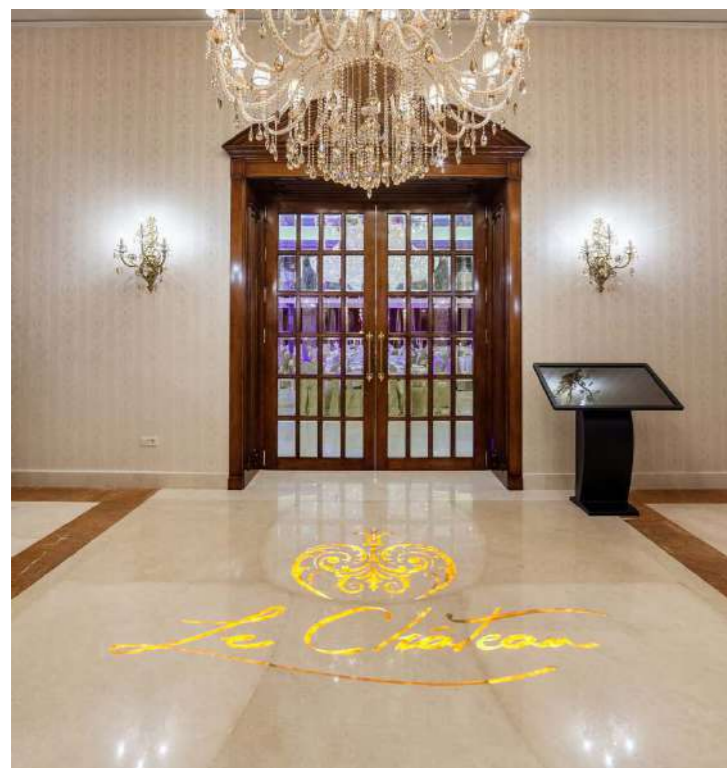
-Medallion Design Picture



-Medallion (With Sodaite Blue Material) Design Picture



-After Installation



-After Installation



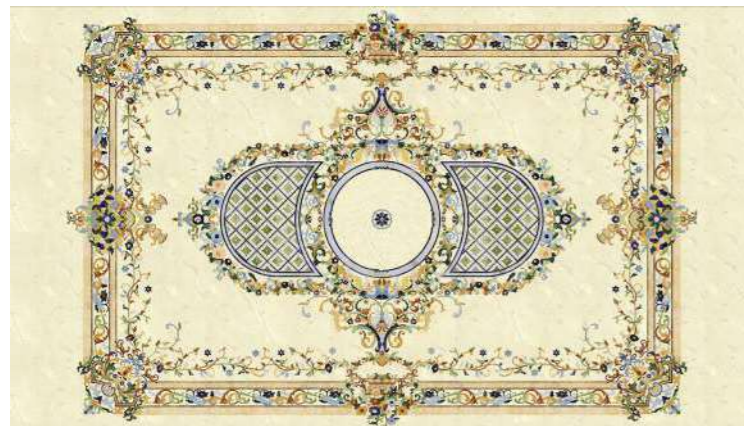
-After Installation



-Medallion Design Picture



-After Installation



-Medallion Design Picture



-Medallion After Installation



-Medallion Design Picture

## KUWAIT PRIVATE VILLA



**LOCATION:** Kuwait

**AREA:** 1,000 m<sup>2</sup>

**DURATION:** 2 Months

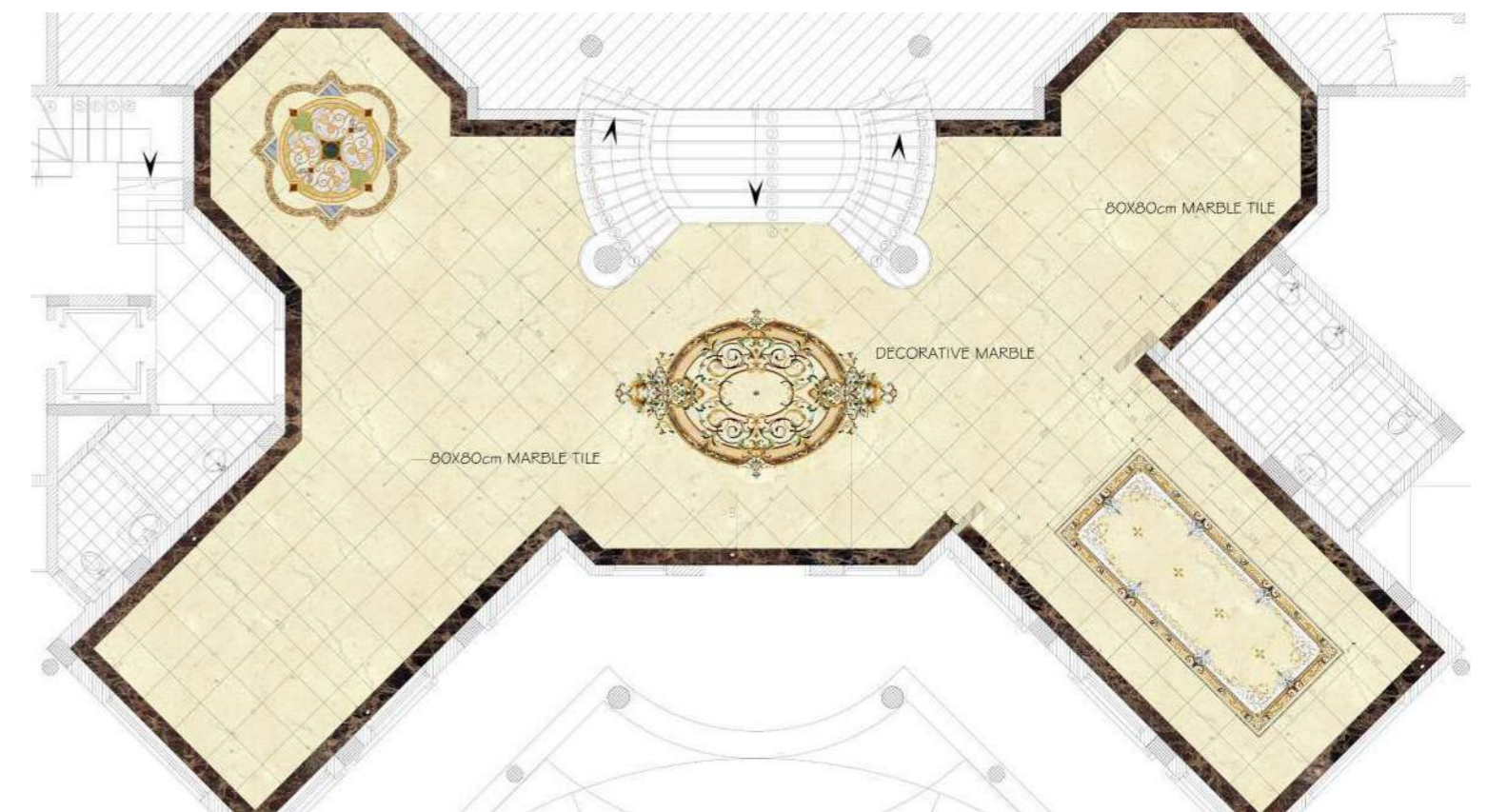
**MATERIAL:**

- Marble
- Water jet medallion

**APPLICATION:**

- Living hall
- Entrance
- Dining room
- Reception hall
- Hallway

This project was located in a affluent residential area. The 1,000 Sq m private villa is one of the premier villa's in Kuwait city. This project had three villas. The specifications were first established with a 3D layout by our designer, then approved and built as per customer requirements. The seamless connections of the water jet technology was of particular importance to the customer. He was very pleased with our completion of his villa's. He has and will continued to use our services.



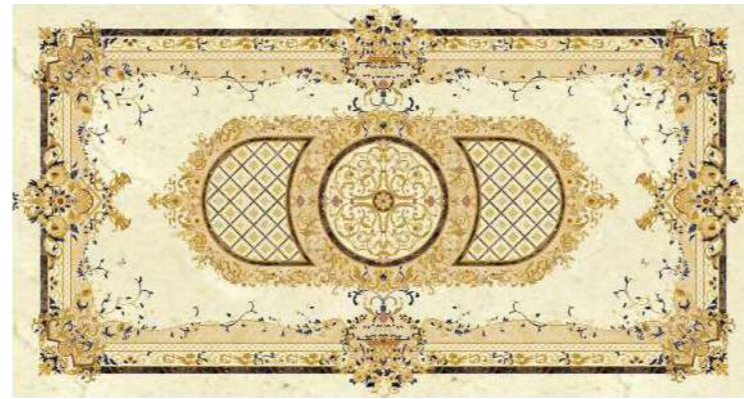
-3D AutoCAD Design



-Finished Product



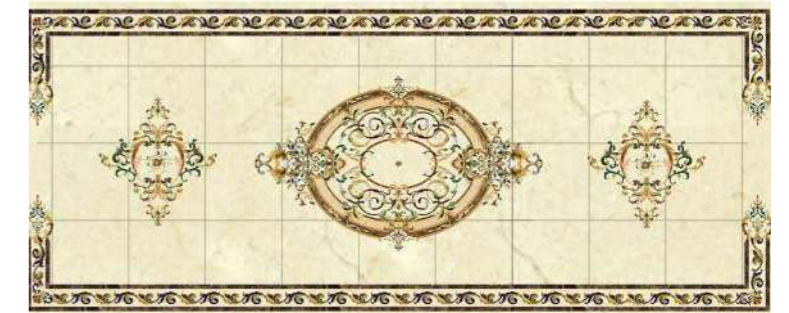
-Finished Product



-CAD Drawing Design



-Finished Product



-CAD Drawing Design



-Finished Product



-CAD Drawing Design



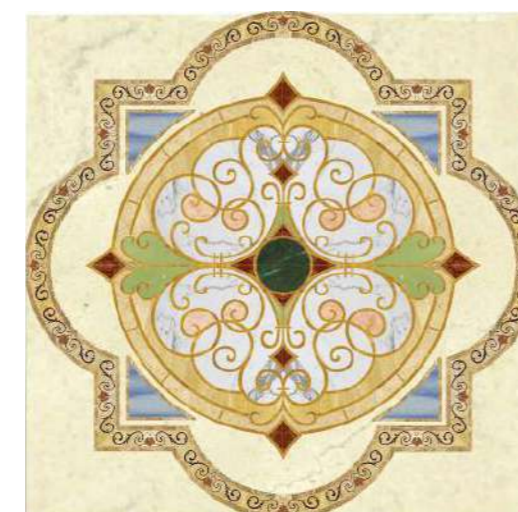
-Finished Product



-CAD Drawing Design



-Finished Product



-CAD Drawing Design



-Water Jet Craft

# HOTEL BACHAUMONT



**LOCATION:** Paris, France

**AREA:** 500 m<sup>2</sup>

**DURATION:** 1 Month

**MATERIAL:**

- Marble mosaic
- Marble art medallion
- Marble moulding

**APPLICATION:**

- Corridor
- Bathroom
- Living room
- Exterior door frame

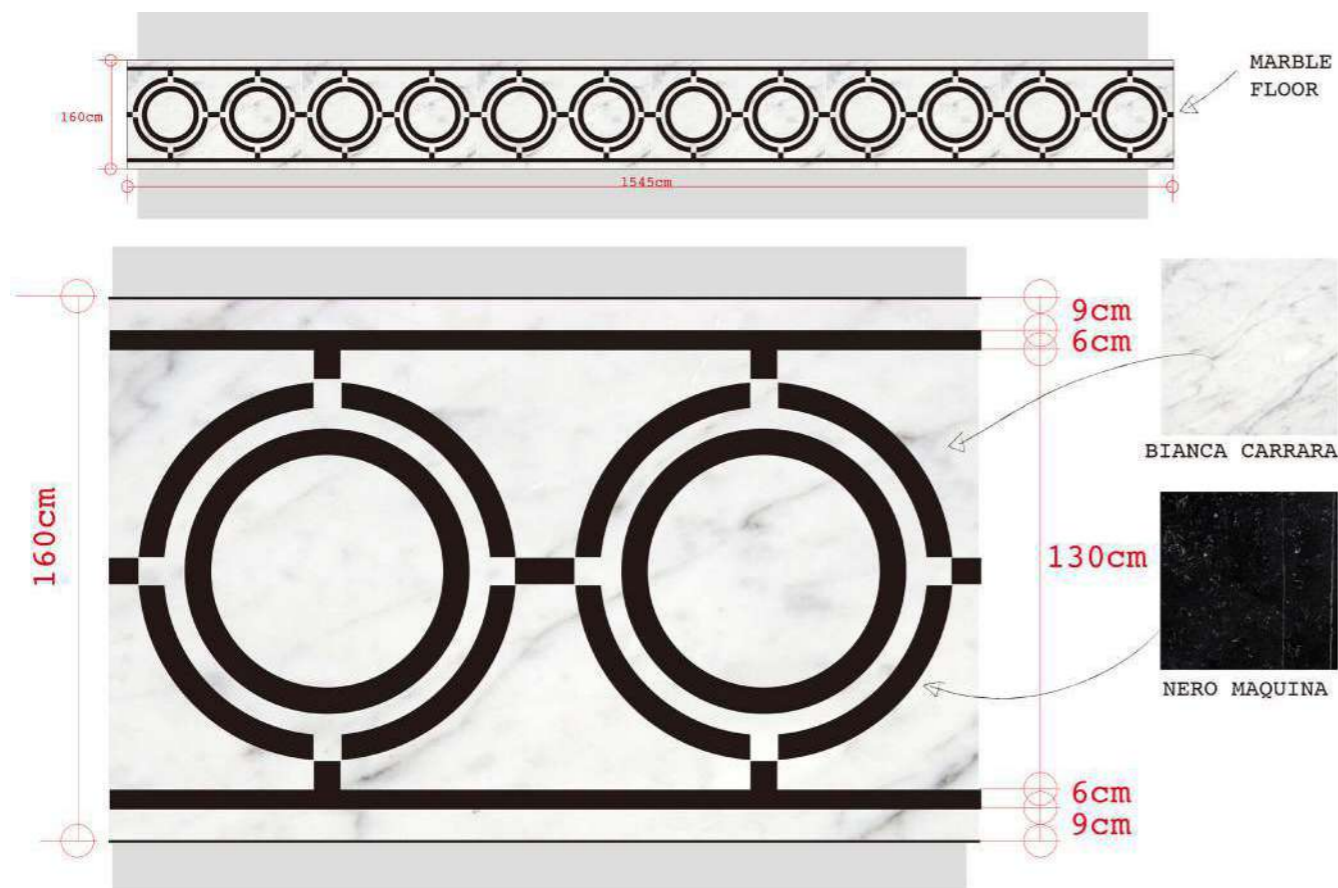
This hotel is located in the montorgueil neighborhood in Paris France. The Hotel Bachaumont is unique and maintains the the original design of the building. The 49 contemporary and corresponding rooms where built and adhered to the originality of the buildings identity. The PFM design team created a series of unique and luxurious surface water jet flooring designs for the hotel corridor and rooms. From our design,delivery,installation and completion, PFM has again exceeded our customers expectations.



-Front Fascia



-Bathroom



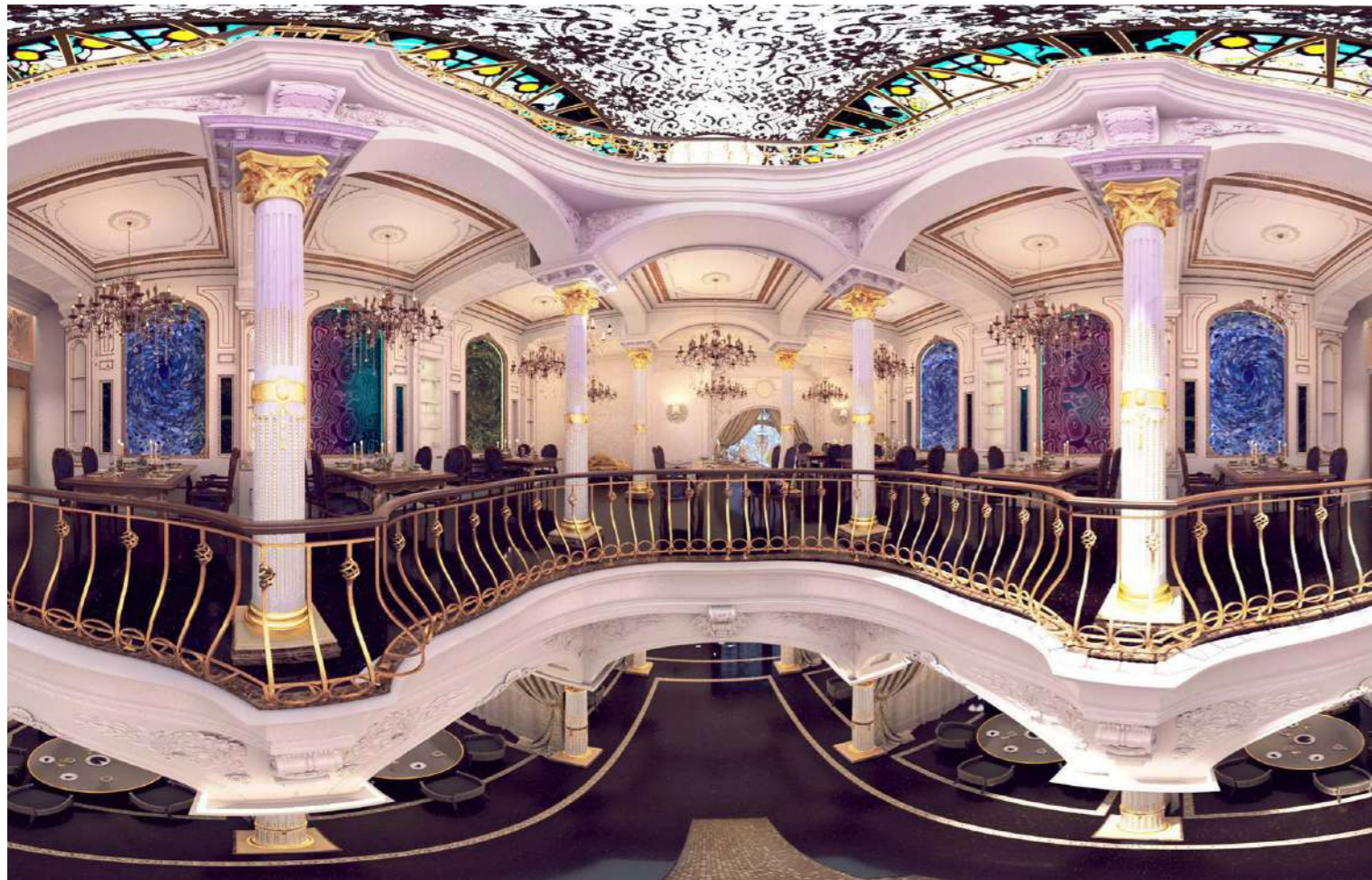
-Design



-After Installation



## BAB AL AMOUD RESTAURANT PROJECT



**LOCATION:** Doha Of Qatar

**AREA:** 500 m<sup>2</sup>

**DURATION:** 2 Months

### MATERIAL:

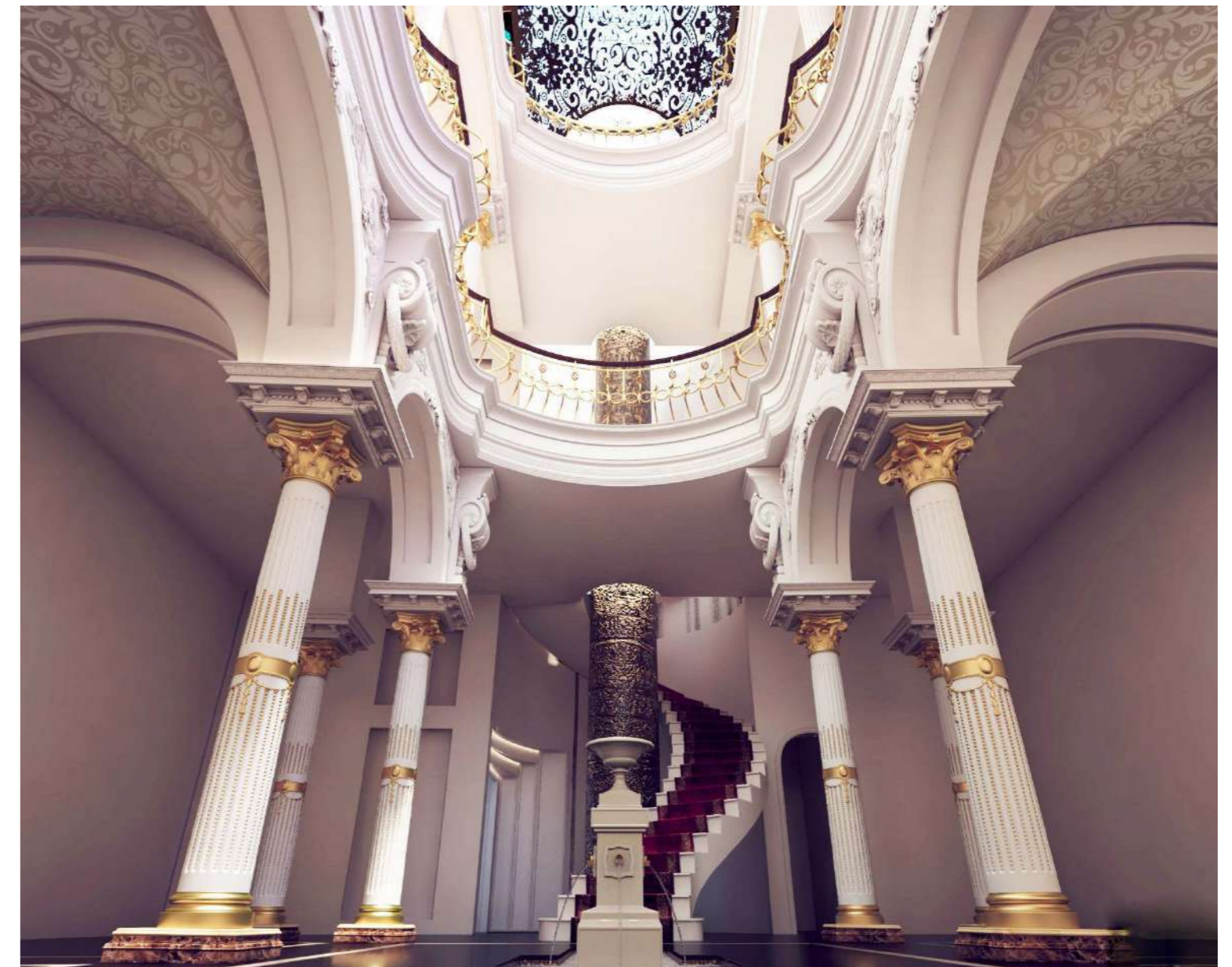
- Chinese black marquina marble
- Chinese white marble
- Vietnam crystal white marble
- Natural backlit agate panel
- Turkey marmara equator marble

### APPLICATION:

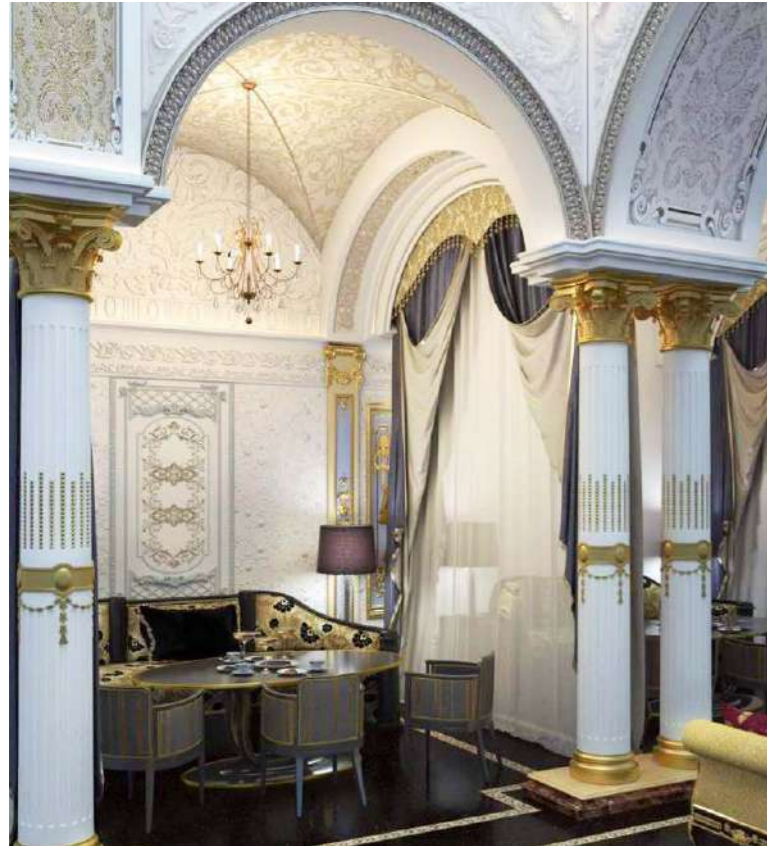
- Interior flooring & wall cladding
- Interior columns & fountain
- Interior feature wall

Bab Al Amoud restaurant is located in Al Hazm Mall, Doha, Qatar. It is a grand, high-end restaurant. Where modern luxury meets the traditional aesthetic. With various aspects of architectural elements, stories, and of course the cuisine itself.

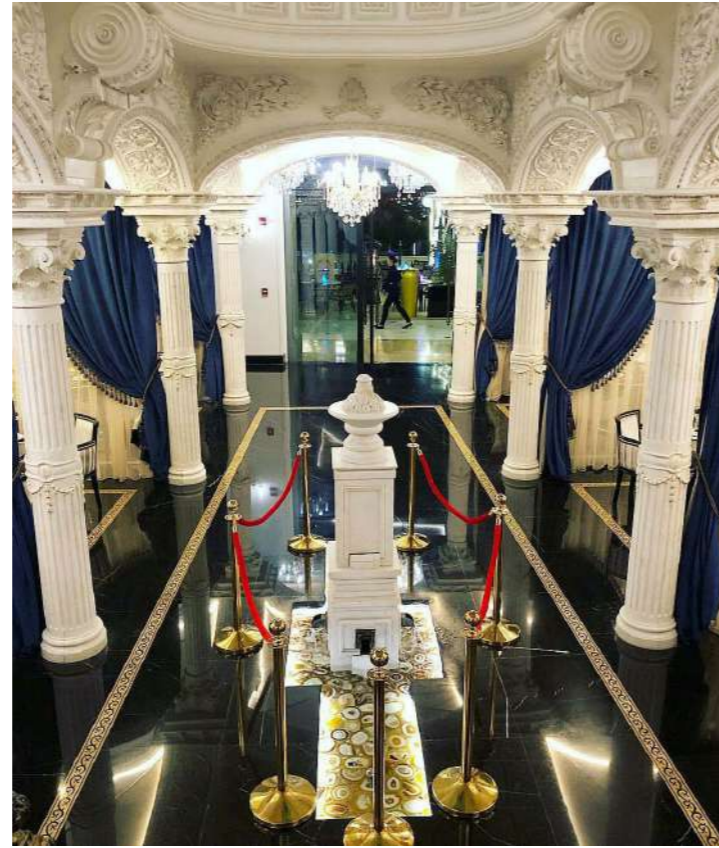
The client's designer made his revision after he visited our showroom in Guangzhou, China. He accepted our material suggestions. Making the project more than ideal. We helped him to amend the shop drawing; which made the design come to reality. The restaurant opened early 2019. We received an awe-inspiring appreciation from the owner and the customer.







- 3D Design



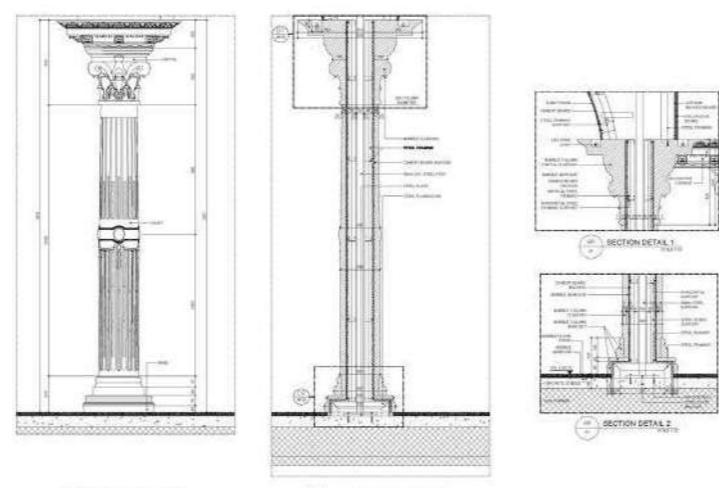
- After Installation



- Finished Product



- After Installation



- CAD Design



- Finished Product



- After Installation

## DIAMOND TWIN TOWER



**LOCATION:** Phnom Penh, Cambodia

**AREA:** 25,000 m<sup>2</sup>

**DURATION:** 2.5 Months

### MATERIAL:

- Burdur beige marble
- Bianco carrara marble
- Silver emperador grey marble
- Marble art medallion

### APPLICATION:

- The lobby of the hotel
- Living room
- Hotel restaurant
- Lift wall and hall way floor
- Lift frames

Diamond Twin Tower is Phnom Penh latest and greatest multi-purpose mega tower, located on the banks of the Mekong River. occupies a prime position adjacent to a main entrance way to Koh Pich and comprises two towers: a 32-storey serviced apartment block of 352 units and a 30-storey high-grade office tower that also includes retail space.

PFM met this challenge under the tight completion time. we updated the shop drawing, completed the delivery of 25,000Sqm marble within 2.5 months under the urgent request from the customer. PFM also provided extra project managers and craftsmen to accommodate our customers change of the construction site.

Beside, the customer bought expensive white marble from Italy, due to short of knowledge of natural marble character, they didn't do the necessary technical treatment on the stone before installation. After one month, there were yellow stain marks appeared on the surface from the bottom of the marble. Customer sought help to us, PFM sent experienced pro stuff to the site, reduce the stain problem with chemical liquid and proper instruction.



-3D Design Of Lobby



-Restaurant Design



-Hotel Design



-Reception Design



-Gym Design



-Outdoor Swimming Pool Design



-Installing



-Amusement Place Design



-Man-Made Beach Design

## TAM DAO CASTLE



**LOCATION:** Tam Dao, Vietnam

**AREA:** Interior 10,000 m<sup>2</sup>  
Exterior 2,000 m<sup>2</sup>

**DURATION:** 3 Months

**MATERIAL:**

- Limestone
- Marble art medallion
- Water jet mosaic tile
- Marble carving

**APPLICATION:**

- Exterior wall cladding
- Dining room
- Living room
- Garden

This project was situated on a majestic rocky mountain range in vietnam's north-eastern region in vinh phuc province. You can see a magnificent old world castle. In this project, PFM consulted and provided answers and solutions to complications arising from the location for the customer.



-Before Installation



-Original Design



-Lobby Design



-Patio Design



-Corridor Design



-Dining Hall

## JAIPUR FIVE STAR HOTEL



**LOCATION:** Jaipur, India

**SCULPTURE:** 5 set

**DURATION:** 3 Months

**MATERIAL:**

- Chinese white marble

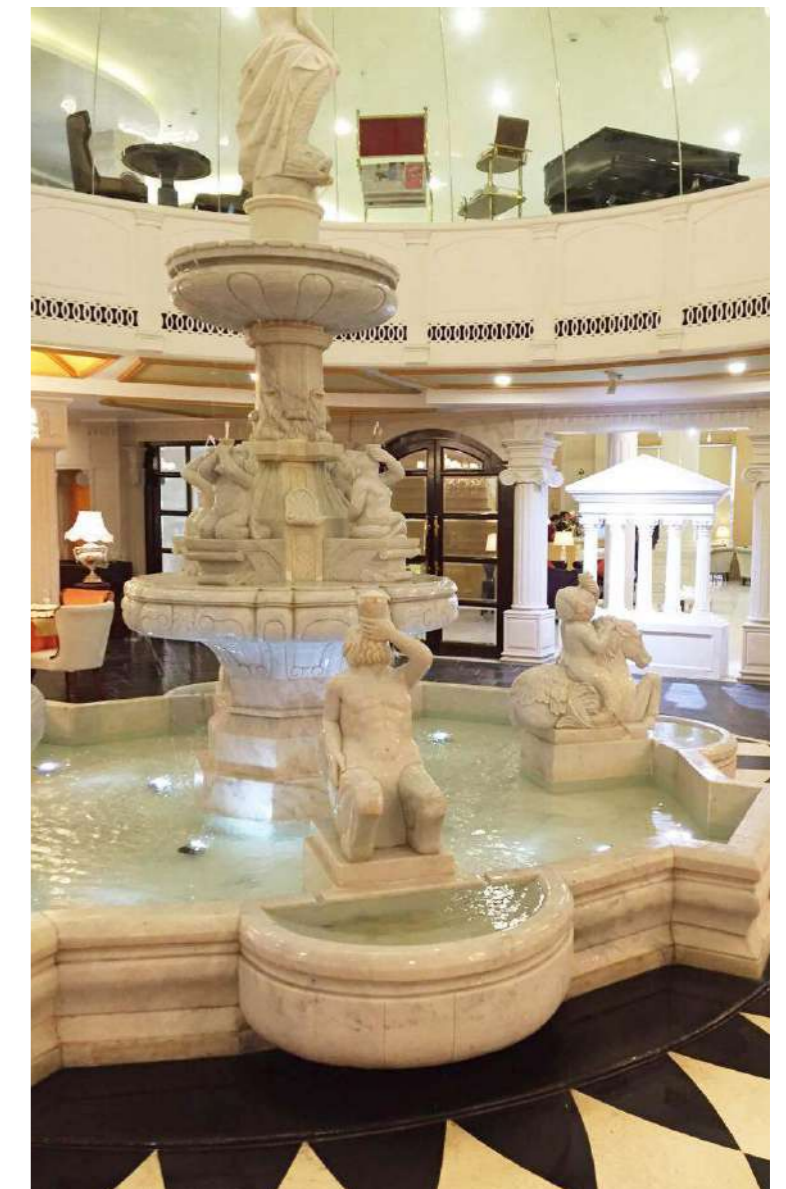
**APPLICATION:**

- Hotel lobby
- Swimming pool
- Dinning hall

Shakun hotels and resorts located in Jaipur India, the owner wanted to bring world class hospitality and aesthetic lodgings to the city. PFM was involved in this project's engraving, fountains and portraits. Our craftsmen showed best handicrafts making the carving absolutely lifelike. We also assisted the third party on installation. PFM considered every detail from the beginning to the end of installation, even timelines to ensure the project finished under control.



-Finished Sculpture



-Marble Fountain



-Pantheon



-Stone Carving Vase



-Stone Bust



-Statue

## RIYADH SHOWROOM



**LOCATION:** Saudi Arabia

**AREA:** 200 m<sup>2</sup>

**DURATION:** 2 Months

**MATERIAL:**

- Marble
- Water jet medallion
- Onyx
- Travertine
- Semi-precious stone
- Glass art mosaic

**APPLICATION:**

- Show room
- Majlis
- Decoration wall

Riyadh showroom is located in the stone district of Saudi Arabia. This location has more than 200 m<sup>2</sup> of warehouse space. The showroom dedicated to displaying of our natural stone at its very best. From 3D design, installation and to project completion, the three onsite project leaders and craftsmen were again successful in our customers satisfaction. The exhibition hall walls and floors were made of marble, waterjet flooring tile, onyx and semi-precious stones. The individual exhibitions overall design and display method avoids the visual interference between the exhibits. This allows the visitors to focus on each specific type of tiles, independently. Again, PFM provides a one-stop solution for all our customers and projects.



- Lobby Design





-Entry Foyer Design



-Under Installation



-After Installation



-Background Wall Design



- After Installation



-Reception Room Design

## COPTIC ORTHODOX CHURCH



**LOCATION:** New York, USA

**AREA:** 4,830 m<sup>2</sup>

**DURATION:** 3 Months

**MATERIAL:**

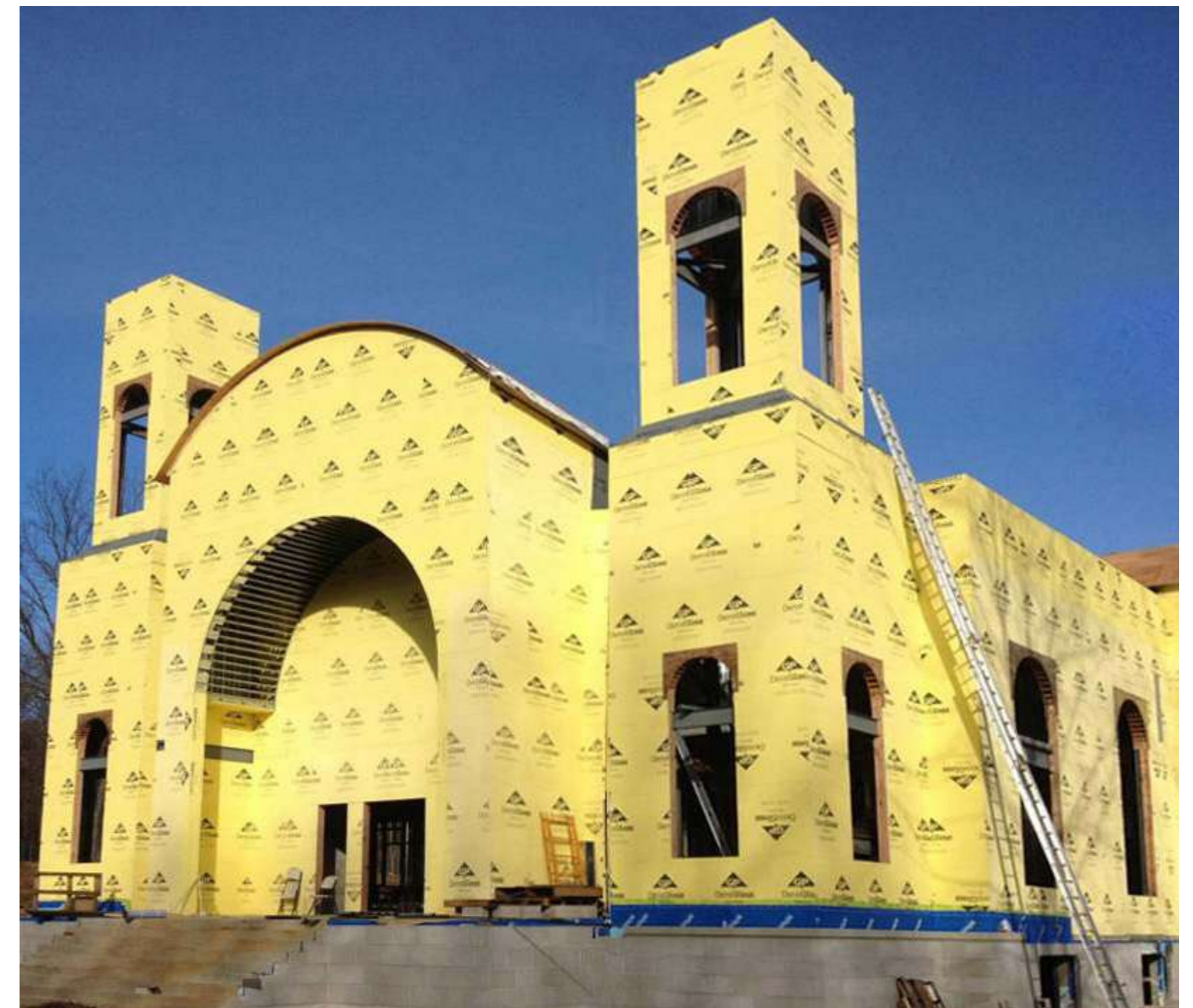
- Sandstone
- Artificial calacatta marble

**APPLICATION:**

- Interior flooring
- Exterior wall cladding

The Virgin Mary and St Bakhomious Coptic Orthodox Church is located in New York City. The administrative building attached to the church covers an area of more than 4,800 square meters. The client wished for us, to provide the highest quality stone materials. PFM participated in the design and installation of their stone products for the interior ground and exterior walls.

The PFM team received the highest praise from the churches project leader and archbishop.



-Installing



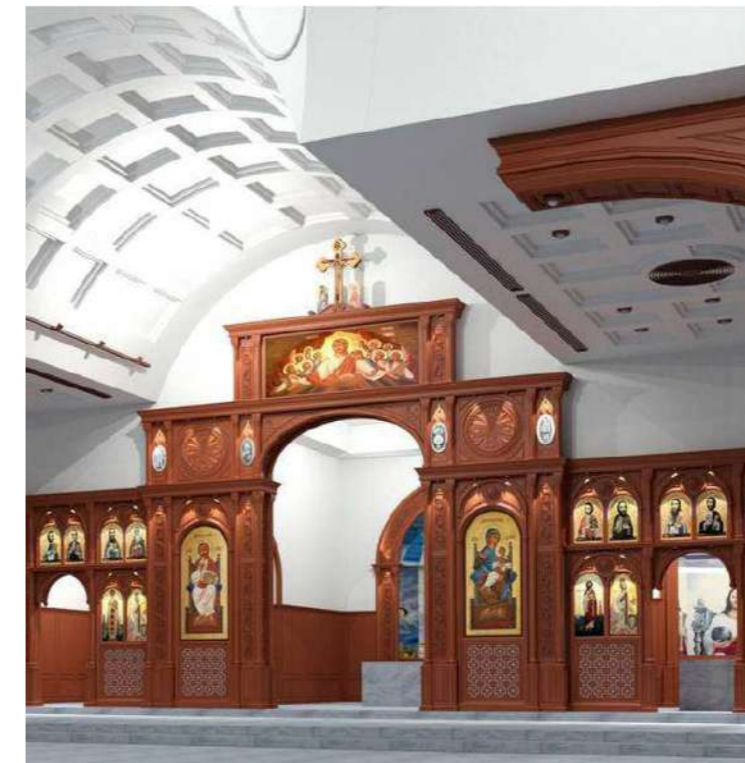
-Build Frame



-3D Design



-Sandstone



-Church Hall

# BEVERLY HILLS VOL.1



This luxury private villa is owned by a hollywood film director who had a dream. He wanted it to look like he was in the sky, with flowers and the goddess of music while he was swimming. PFM's design team along with the manager created this fantasy art mosaic swimming pool theme. The first time our customer swam in his dream pool, his reaction was of awe and amazement.



- 3D Design of The Pool

**LOCATION:** Los Angeles, USA

**AREA:** 724.6 m<sup>2</sup>

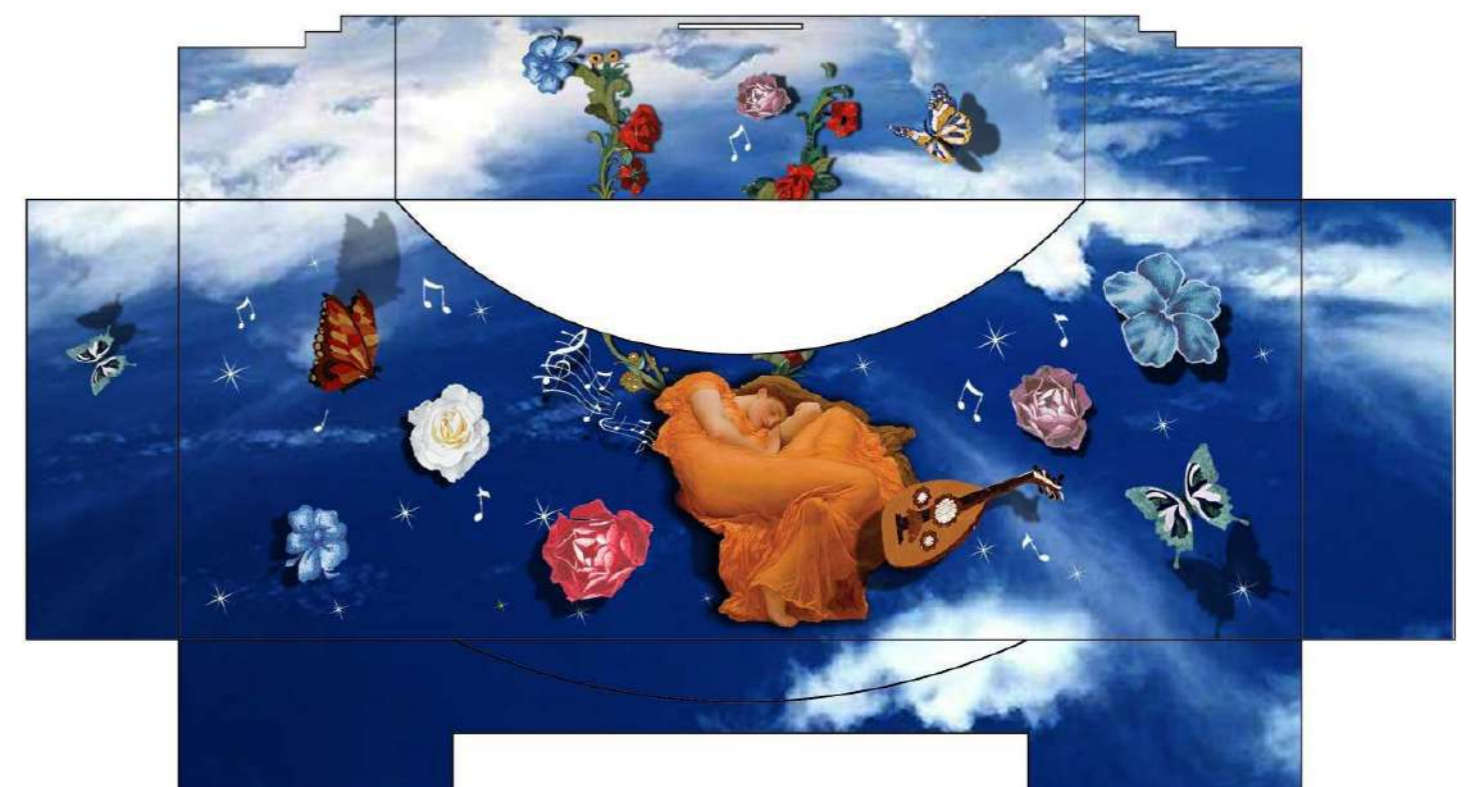
**DURATION:** 1.5 Months

**MATERIAL:**

- Glass art mosaic
- Marble statue
- Bianco cerraara fireplace
- Cerrara marble relief carving
- Honey onyx

**APPLICATION:**

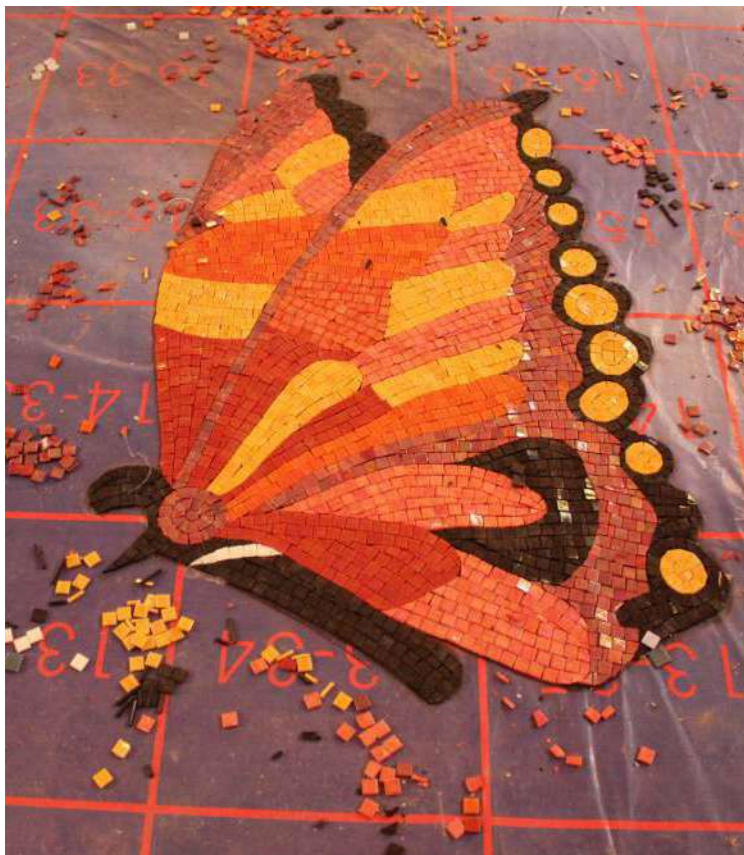
- Swimming pool
- Kitchen
- Living room
- Garden



-Design of The Pool



-After Installation



-Under Assembly



-Pool Area



-Pool Backwall



-Wall Fountain



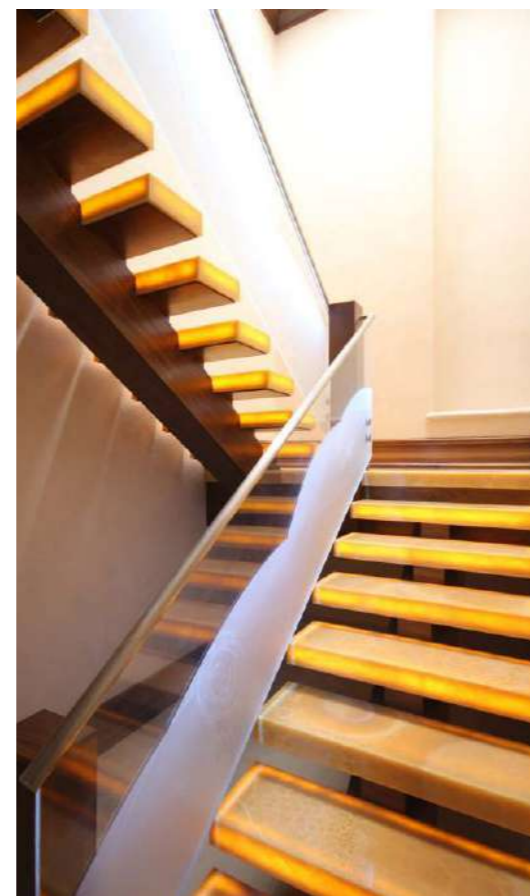
-CAD Drawing For The Kitchen Art Glass Mosaic



-After Installation



-Master Bathroom



-Onyx Stairs



-Entry Foyer



-Living Room Ceiling





**LOCATION:** Los Angeles, USA

**AREA:** Exterior 5000 m<sup>2</sup>  
Interior 3000 m<sup>2</sup>

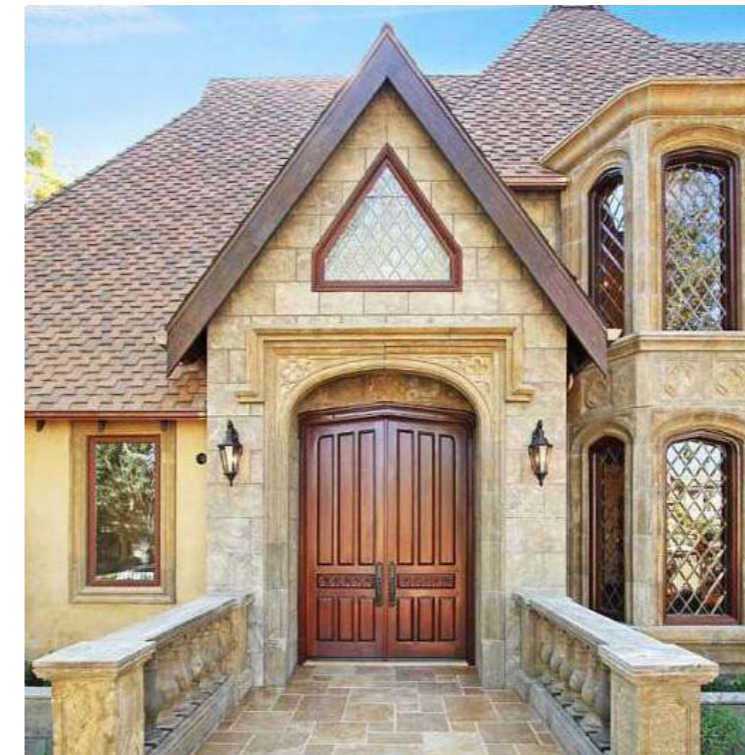
**DURATION:** 2 Month

**MATERIAL:**

- Onyx water jet medallion
- Cream marfill marble
- White onyx
- Honey onyx

**APPLICATION:**

- Living room
- Kitchen
- Bathroom
- Powder room
- Garden



-Front Entry



-Window



-Glass Mosaic For Pool Area



-Fire-Pit Area



-Pool Back Wall



-Backyard



-Family Room



-Design Of Medallion



-Master Bathroom



-Kitchen



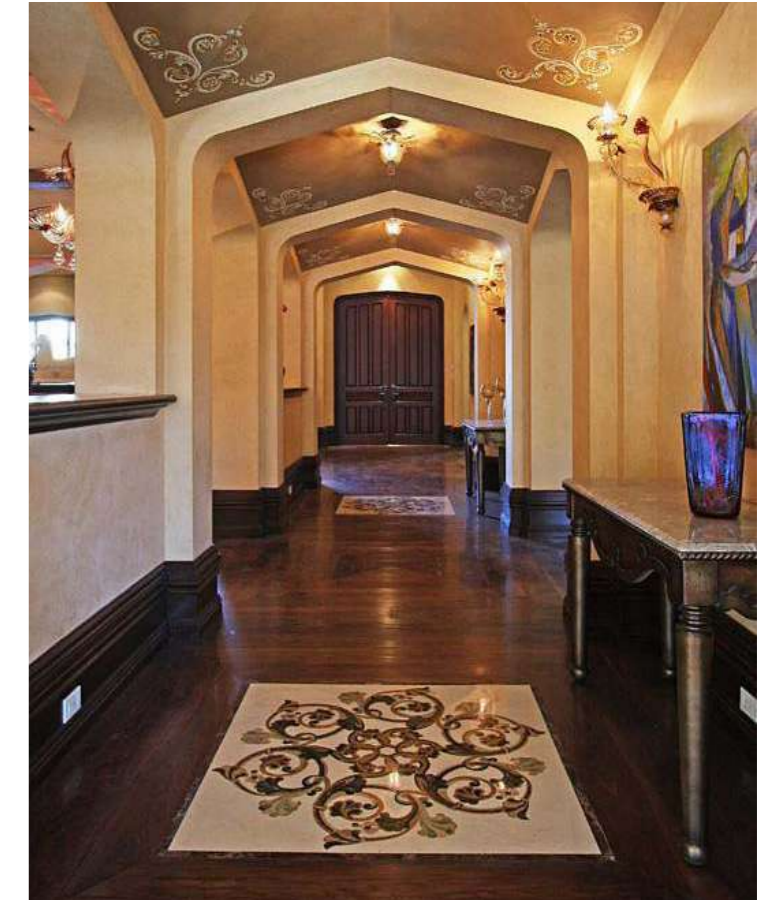
-Family Room Fireplace



-Library



-Design Of Medallion



-Gallery



## BEVERLY HILLS VOL.3



**LOCATION:** Los Angeles, USA

**AREA:** 1,037 m<sup>2</sup>

**DURATION:** 3 Months

**MATERIAL:**

- Glass art mosaic
- Marble medallion
- Bianco cerraia fireplace
- Cerraia relief carving
- Honey onyx

**APPLICATION:**

- Swimming pool
- Kitchen
- Living room
- Garden
- Wall fountain

Known as the most prestigious residential areas in the world, Beverly Hills is where many hollywood movie stars and royalty reside. Beverly Hills plays home to movie and television stars both on the screen and off. PFM began our Beverly Hills project tour in 2009. Our engineers and staffs cooperated with a local design company that makes design drawings become reality. In these projects, PFM's of stone supply, installation services, quality control of carving process and stone cutting technology have been flawless. Our attention to the quality and our customers' satisfaction is what builds long lasting relationships with our clients.



-Backyard



-Outdoor Breakfast



-Outdoor Patio



-Outdoor Fireplace



-Pool Area



-Basement Bar



-Basement



-Kitchen



-Living Room



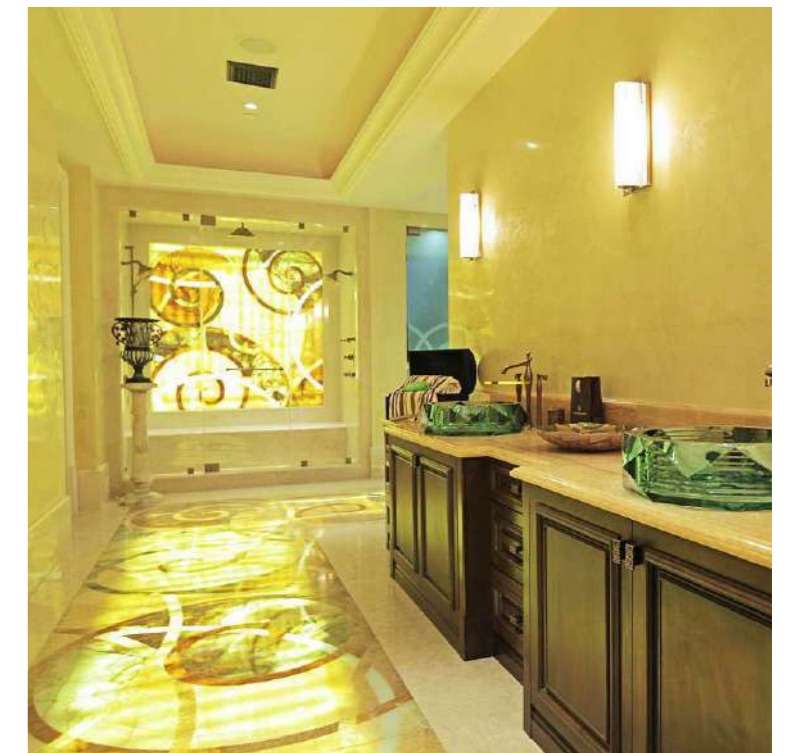
-Entry Foyer



-Library



-Master Bathroom



-Onyx Floor

## LINDA FLORA MODERN RESIDENCE



**LOCATION:** Los Angeles, California, US

**AREA:** 2600 m<sup>2</sup>

**DURATION:** 6 Months

### MATERIAL:

- Kenya Wood Marble
- Palissandro Classico Marble
- White Wood Marble
- Iran White Onyx
- Brazil Zebra Granite
- Chinese Dark Granite
- Glass Mosaic
- Antique Imitation Tile
- Wooden Parquet Flooring

### APPLICATION:

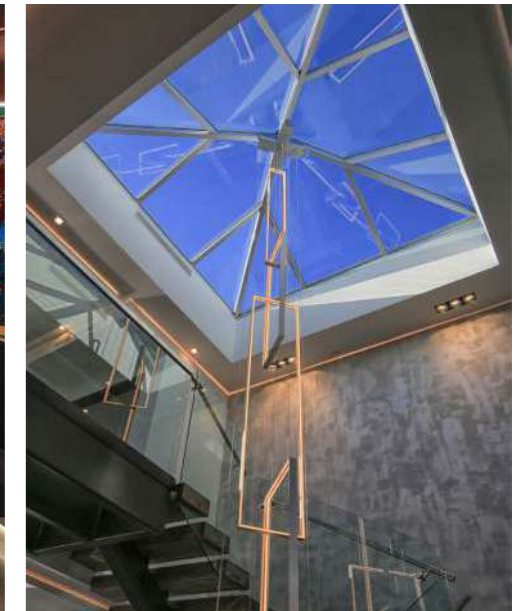
- Interior Wall Cladding
- Exterior Wall Cladding
- Living Room
- Bathroom
- Kitchen Top
- Bar Top
- Swimming Pool

This 2000 sqm home not only merges with its remarkable environment, but virtually disappears. Except for a few deft lines and angles – such as the ordered rows of the surrounding vineyard – there is very little perceivable ‘built’ presence. The entrance is marked by a single low wall, delicately cut into the land while sheltering a stairway that immediately begins the descent into the home.

Overlooking the vine yard terraces, floor-to-ceiling windows open onto an infinity-edged pool, which skims the edge of the terrace merging with the distant horizon. Portions of the house take on the abstract character of the adjacent landscape becoming an architectonic extension of the natural topography.



-Outdoor Lounge



-Meeting Room



-Open-plan Living Room



-Bathroom



-Bar



-Home Theater



-Showroom Closet



-Master Bedroom

## KAGAWA MODERN RESIDENCE



**LOCATION:** Los Angeles, California, US

**AREA:** 750 m<sup>2</sup>

**DURATION:** 2 Months

### MATERIAL:

- Ice Grey Marble
- New Milas Lilac Marble
- Guangxi White Marble
- Grey Wooden Vein Sandstone
- White Galaxy Quartz
- Marble Tiles
- Wooden Parquet Flooring
- Wool Carpet
- Glass Mosaic

### APPLICATION:

- Interior Wall Cladding
- Living Room, Bathroom
- Vanity Top, Kitchen Top
- Bar Top
- Swimming Pool

Stunning architectural masterpiece just a few blocks from Caruso's new Palisades Village. This entertainer's dream home, offers 6 large en-suite bedrooms, open floor plan and seamless indoor/outdoor flow. French White Oak wood floors complement high ceilings, and cove lighting. Chef's kitchen features oversized marble slab island, custom cabinetry and Sub Zero-Wolf appliances. Ultimate backyard living space features grassy lawn, sundeck, entertaining patio, BBQ, spectacular pool/spa with glass windows giving jaw dropping experience in the sun filled lower level with spacious entertainment area, bar, wine display and state of the art home theater. Floating staircase to master suite with peek-a-boo ocean views, large balcony, 2-sided fireplace, spacious walk-in-closet and bath spa retreat with steam shower and freestanding soaking tub. Four level elevator to impressive roof top deck with custom bar, fire pit, and hot tub with stunning panoramic ocean and mountain views.



- Outdoor Lounge



-Bedroom



-Open-plan Living Room



-Amusement Place



-Home Theater



-Open-plan Kitchen



-Bathroom

## AUSTRALIA PRIVATE HOUSE



**LOCATION:** Perth, Australia

**AREA:** 1,500 m<sup>2</sup>

**DURATION:** 2 Months

**MATERIAL:**

- Volakas white marble
- Beige travertine
- Chinese sea-pray granite

**APPLICATION:**

- Bathroom
- Kitchen
- Hall
- Floor
- Wall
- Countertop

This private luxury villa project was built by PFM in co-operation with an Australian designer in 2011. This modern but simple luxurious style was maintained throughout the entirety of the design. The living room mainly uses natural beige travertine stone to bring a warm and functional feeling to the entire space. This is another customer who has referred our services to his family, friends and business associates.



-Bathroom



-Bathroom



-Living Room



-Kitchen

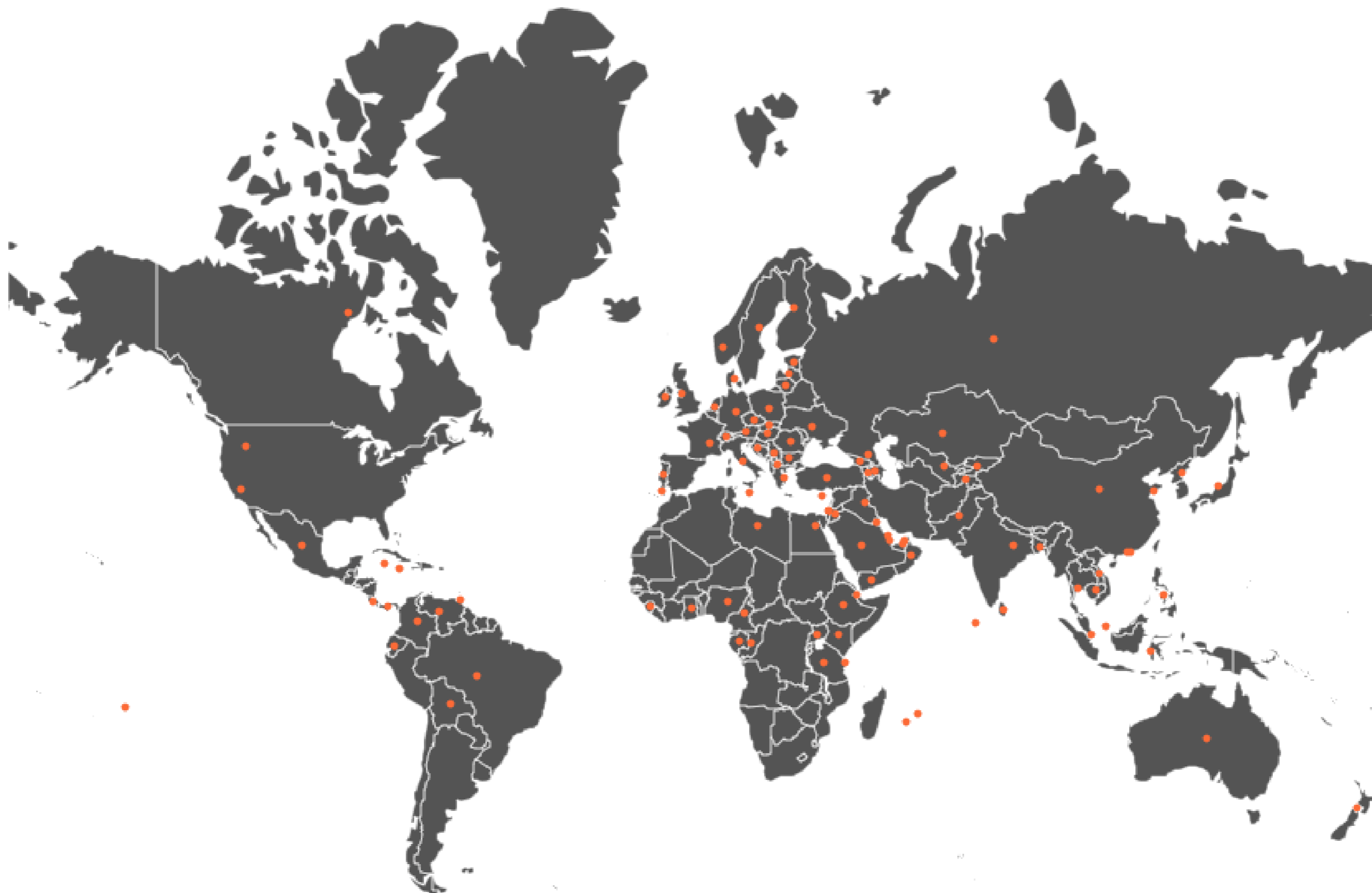


-Outdoor



# PFM Global Business Network

PFM has been providing materials and services to 103 countries & regions since 2006.



**Thank You For Watching This Profile :)**

Our services are from A to Z, from land planning to turn key project.  
Our dream is build your dream house with our effort.



**Promising Flooring Material Limited**  
**PFM Imp. & Exp. Co.,Ltd.**

**Tel:** +86-134 3430 4906

**Email:** susan@marblelegend.com

**Web:** www.pfmstone.com

**Instagram/Youtube/Facebook:** pfmstone

**Add.:** #301,MingRun Business Building,Huangbian No.9 NorthRoad,Baiyun

District,Guangzhou,China

(GPS | 23°13'20.0"N 113°17'24.1"E)