



PFM

2019
**MARBLE
FOUNTAIN
CATALOG**

INDEX

INTRODUCTION **01**

CLASSICAL FOUNTAINS 02 - 05

STATUARY FOUNTAINS 06 - 11

WALL FOUNTAINS 12 - 15

NATURAL STONE SWATCHES **16 - 17**

THE BESPOKE PROCESS **18 - 21**

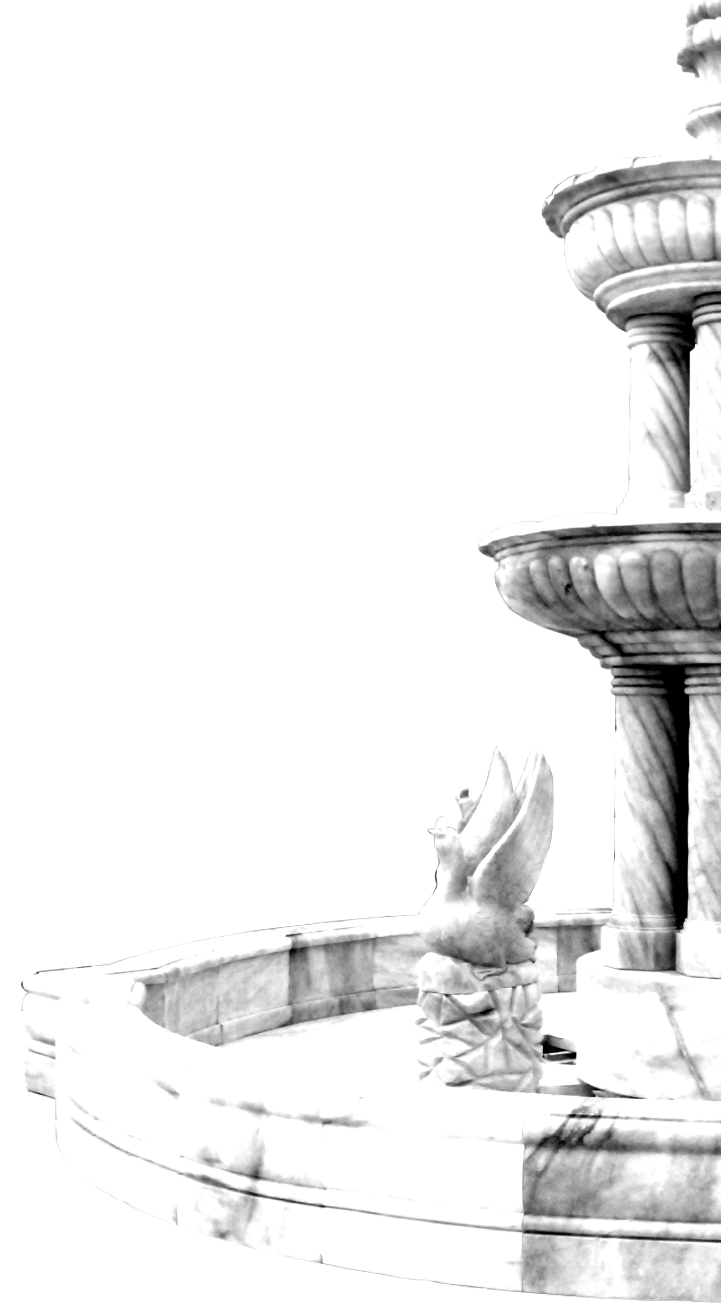
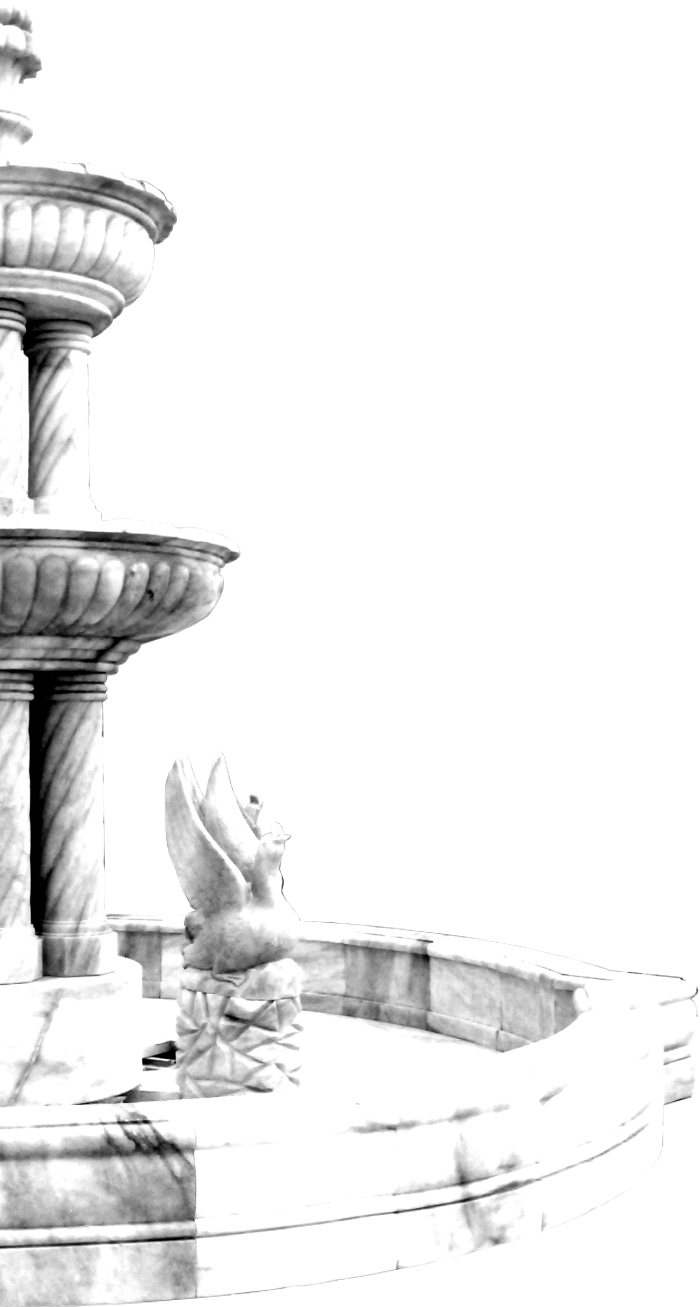
INTRODUCTION

PFM believes nothing is impossible with stone. We know luxury architecture demands the best design, craftsmanship and quality. And our specialty in custom architectural stone and water fountains prove exceptional to the most discerning homeowners, designers and architects.

An exquisitely designed water fountain will add elegance, grandeur or charm to your architectural set-up. Our water fountain is carved from 100% natural solid marble. And our huge selection of carved marble and granite products is second to none. Please explore our endless design options in this fountain collection.

PFM works with you every step of the way to turn your dreams into reality.

CLASSICAL FOUNTAINS





TF-0001
(Diameter:250cm Height:210cm)



TF-0002
(Diameter:150cm Height:200cm)



TF-0003
(Diameter:350cm Height:300cm)



TF-0004
(Diameter:350cm Height:275cm)



TF-0005
(Diameter:350cm Height:300cm)



TF-0006
(Diameter:250cm Height:210cm)



TF-0007
(Diameter:300cm Height:210cm)



TF-0008
(Diameter:350cm Height:200cm)



TF-0009
(Diameter:300cm Height:250cm)



TF-0010
(Diameter:450cm Height:330cm)



TF-0011
(Diameter:250cm Height:200cm)



TF-0012
(Diameter:230cm Height:220cm)



TF-0013
(Diameter:420cm Height:350cm)



TF-0014
(Diameter:730cm Height:482cm)



TF-0015
(Diameter:400cm Height:300cm)



STATUARY FOUNTAINS





TF-0016
(Diameter:200cm Height:200cm)



TF-0017
(Diameter:200cm Height:200cm)



TF-0018
(Diameter:305cm Height:244cm)



TF-0019
(Height:165cm)



TF-0020
(Diameter:300cm Height:200cm)



TF-0021
(Diameter:400cm Height:300cm)



TF-0022
(Diameter:500cm Height:380cm)



TF-0023
(Diameter:500cm Height:360cm)



TF-0024
(Diameter:480cm Height:360cm)



TF-0025
(Diameter:600cm Height:480cm)



TF-0026
(Diameter:420cm Height:380cm)



TF-0027
(Diameter:600cm Height:460cm)



TF-0028
(Height:160cm)



TF-0029
(Diameter:200cm Height:180cm)



TF-0030
(Diameter:500cm Height:300cm)



TF-0031
(Diameter:500cm Height:300cm)



TF-0032
(Diameter:600cm Height:300cm)



TF-0033
(Diameter:732cm Height:610cm)



TF-0034
(Diameter:400cm Height:300cm)



TF-0035
(Diameter:680cm Height:420cm)



TF-0036
(Diameter:500cm Height:500cm)



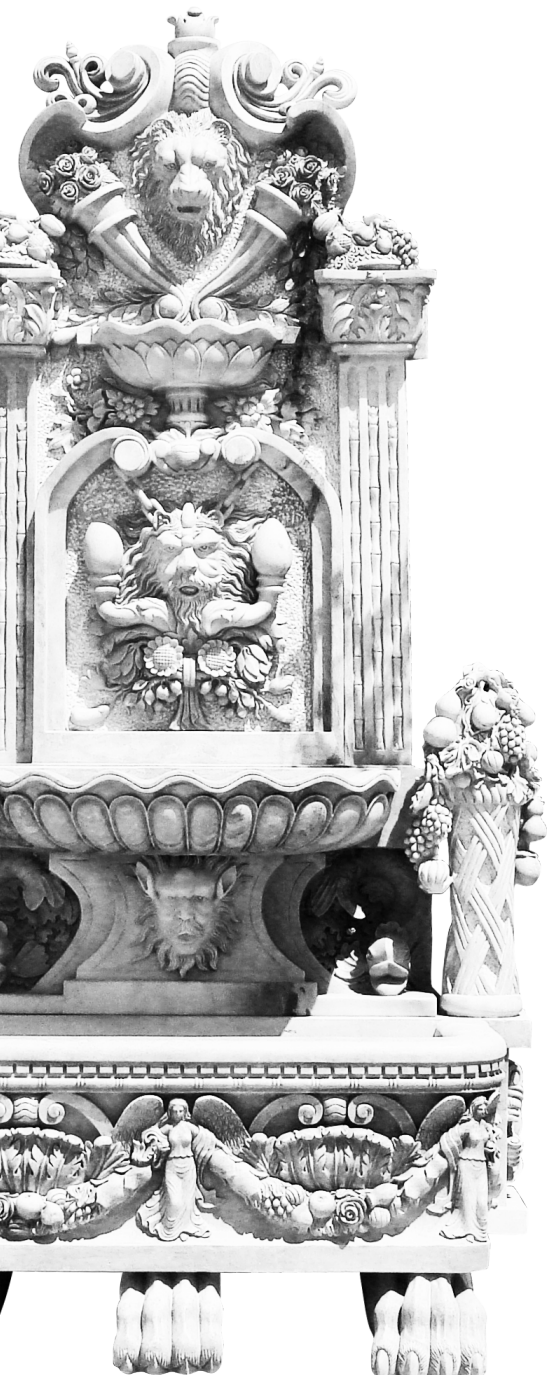
TF-0037
(Diameter:900cm Height:650cm)



TF-0038
(Diameter:900cm Height:650cm)



TF-0039
(Diameter:600cm Height:450cm)



WALL FOUNTAINS





TF-0040
(Height:180cm)



TF-0041
(Height:180cm)



TF-0042
(Height:180cm)



TF-0043
(Height:160cm)



TF-0044
(Height:200cm)



TF-0045
(Diameter:200cm Height:185cm)



TF-0046
(Height:250cm)



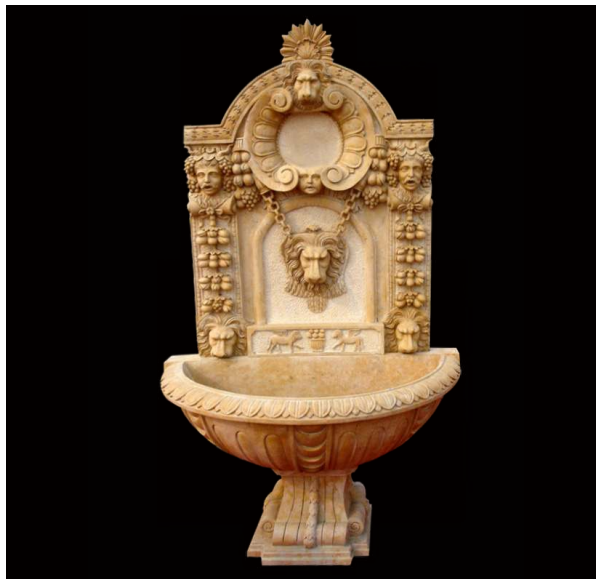
TF-0047
(Height:180cm)



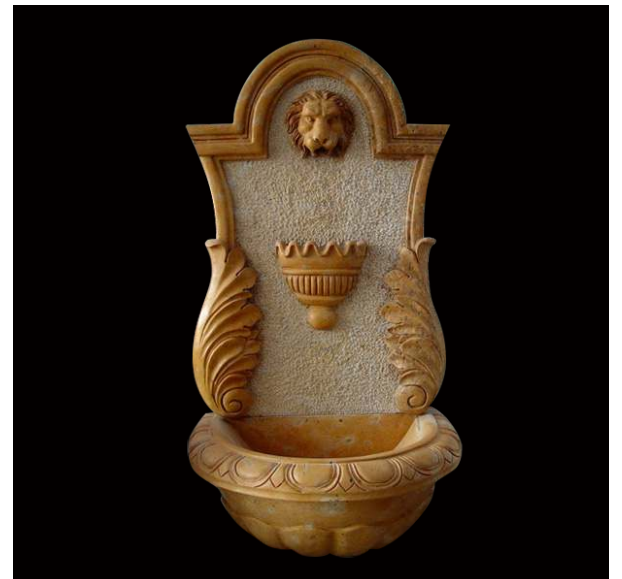
TF-0048
(Height:210cm)



TF-0049
(Height:180cm)



TF-0050
(Height:180cm)



TF-0051
(Height:110cm)



TF-0052
(L:260cm W:180cm H:230cm)



TF-0053
(Height:195cm)



TF-0054
(Height:190cm)



TF-0055
(Height:195cm)



TF-0056
(Height:180cm)



TF-0057
(Height:180cm)

NATURAL STONE SWATCHES

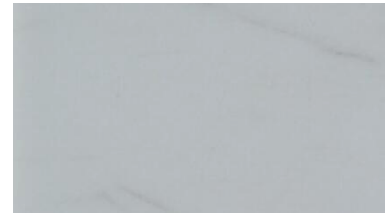
We source some of the finest material and quarries all over the world, including limestone, travertine, Italian white marble, such as carrara and arabescato, and a variety of coloured marble.



BIANCO CARRARA



MASHA WHITE



FANGSHAN WHITE



GUANGXI WHITE



ARABESCATO



EGYPT WHITE



MOON CREAM LIMESTONE



WHITE SANDSTONE



CREMA MARFIL



SUNNY BEIGE



BEIGE SANDSTONE



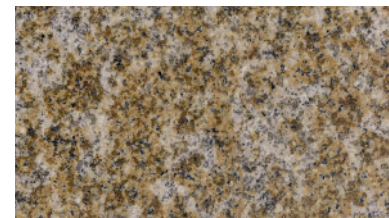
SUNSET RED



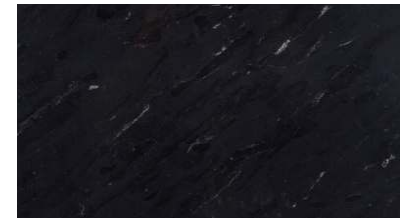
HENAN BEIGE LIMESTONE



CHINA TRAVERTINE



RUST STONE



BLACK JADE

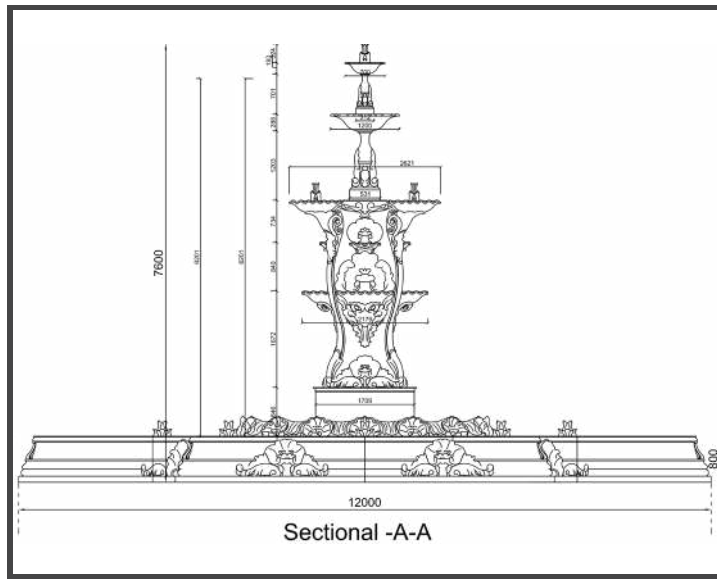
THE BESPOKE PROCESS

The manufacturing process of each fountain is entirely carried out by PFM from the concept design to the confirmed drawing, from the choice of stone block to the marble engraving. Our exclusive marble water fountain is made in our factory by our most experienced master workers and artisans.

The fountain can be a design that you would like to make with specific size requirements. We can provide our best proposal, once you give us design picture and size reference.

STEP 1:

Prior to commencing production, we will produce a technical drawing or 3D design for reviewing.



CAD Drawing



3D Rendering

STEP 2:

Once the technical drawing and marble blocks is agreed, our experienced team of stone masons and carvers will produce your fountain, using time honoured tools and methods lending the fountain both a traditional and unique quality. And All of our fountain are expertly pre-assembled to en sure that the finished result is absolutely perfect.



Marble Blocks Selection



Handcraft Carving



CNC Machine Carving



Pre-Assembling & Water Spray System Test

STEP 3:

The process to set up a marble fountain is not overly technical or complicated. Following these simple steps will help you to set up the fountain easily.



01.Concrete foundation construction



02.Water supply system installation



03.Surrounding pool installation



04.Internal installation



05.Preassembling with crane



06.Inspecting by worker



07.Installation completed



08.Water system test & acceptance



Promising Flooring Material Limited
PFM Imp. & Exp. Co.,Ltd.

Add.: #301,MingRun Business Building,Huangbian
No.9 North Road,Baiyun District,Guangzhou,China
(GPS | 23°13'20.0"N 113°17'24.1"E)

Tel: +86-134 3430 4906

Email: susan@marblelegend.com

Web: www.pfmstone.com

