

## PVC Concrete Formwork

PVC concrete formwork is an environmentally-friendly high-tech plastic composite formwork. It is mainly made of polyvinyl chloride, bamboo fiber or wood fiber, produced by extrusion foaming technology.

PVC formwork has great water resistance, heat resistance and dimensional stability, which can completely replace wooden formwork and avoid these shortcomings of wooden formwork. It is suitable for all parallel and vertical use, pillar, column, beam work, side wall, steps, elevator shaft, ladders of high-rise buildings, halls, bridges, viaducts, tunnels, etc.

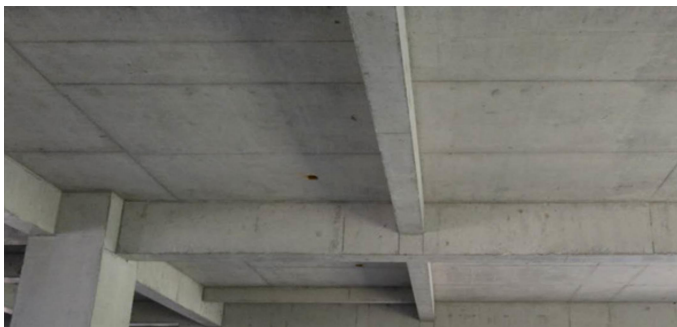
As the number of reuses of PVC concrete formwork increases, the material cost decreases. Using PVC formwork can reduce the overall cost of a project by 3/5 to 1/2 compared to a project using wood formwork.



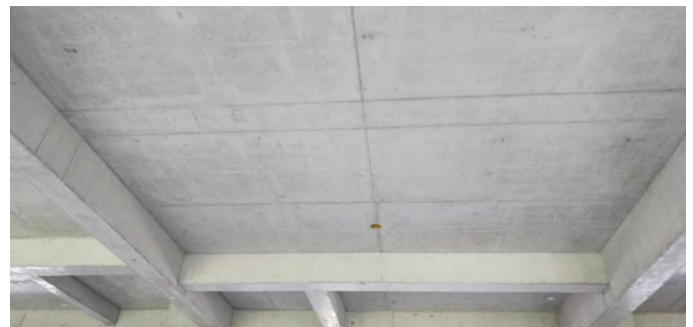
### Product Details

According to different project quality requirements, we provide two types of PVC concrete formwork, they are common pvc concrete formwork and fair-faced concrete formwork. For projects that require high-standard fine finishes, the fair-faced pvc concrete formwork is strongly recommended.

It has a more glossy surface, stronger toughness and rigidity. The surface of poured concrete can have a fair-faced and smooth finish, eliminating the cost of polishing and plastering.



Common PVC Concrete Formwork



Fair-faced PVC Concrete Formwork

We are able to provide curved pvc concrete formwork for bridge construction.



Concrete Formwork For Bridge



The Use And Loading Of Curved Formwork



PVC Formwork & Plywood

We made a practical use comparison between plywood formwork and PVC formwork on our construction site.

The picture shows the use of plywood formwork and PVC formwork in the same building and at the same area.

Both formworks have been reused **6 times**.

Formwork Performance	PVC Concrete Formwork	Plywood Formwork
Hardness	70 - 75 Shore D	Less than 30 Shore D
Flatness	Flat overall, slightly bent	The bending height is close to 2 cm
Surface	No damage on the surface, with small dent	The surface is damaged, especially near the edge
Corners	Good	The corners are cracked, not right angles
Expansive Deformation	No expansion	Expand and separated layer
Service life	Can continue to be used	Out of use

The concrete surface after demoulding of the two formworks. The quality of concrete using PVC concrete formwork is much better.

The following pictures show the comparison of the appearance of concrete surfaces. **Left: PVC formwork. Right: plywood formwork.**



Concrete Appearance	PVC Concrete Formwork	Plywood Formwork
Concrete Color	The color of concrete can be uniform and beautiful without a mold release agent	A release agent must be used, otherwise the color of the concrete cannot be uniform
Wall	Overall clean and smooth	Rough with dirt and scratch, and uneven concrete
Ceiling	Tight joints, with only a little concrete overflow	There is excess concrete in the joints, need to be removed manually
Beam	Overall clean and smooth	Rough with dirt and scratch, and uneven concrete, especially at the junction
Pillar	Overall clean and smooth	The concrete at the junction is uneven, with concrete overflow or insufficient

## Advantage



### Water-proof & mildew-proof

suitable for outdoor and humid environments



### Anti-corrosion

acid and alkali resistance, no corrosion



### Weather resistance

can be used in cold, hot and humid environments



### Nail-holding strength

tighten the screws without slipping



### Good impact resistance

not easy to crack after being dropped or hit



### Strong workability

can be easily drilled, nailed, sawed, cut, planed, glued, sanded, painted



### Cost efficiency

up to 30 times of repeated use, reducing engineering costs



### Save labor and working hours

can be easily drilled, nailed, sawed, cut, planed, glued, sanded, painted



### Good concrete surface

no mold release agent, no plastering

## Specification

Length	1830mm, 2440mm length can be customized
Width	915mm, 1220mm
Thickness	12mm, 15mm, 16mm, 18mm
Density	0.65 - 0.75 g/cm <sup>3</sup>
Surface	Smooth
Processing	Cut to size is available

## Physical Properties

Specimen: PVC concrete formwork, 18mm thick

Test Item	Method	Unit	Result
Density	ASTM D792	g/cm <sup>3</sup>	0.73
Hardness	ASTM D2240	Shore D	75
Water Absorption	ASTM D570	%	1.5
Flexural Strength	ASTM D790	MPa	26
Flexural Modulus	ASTM D790	MPa	1000
Tensile Strength at Yield	ASTM D638	MPa	30
Tensile Modulus	ASTM D638	MPa	1200
Elongation at Break	ASTM D638	%	15
Modulus of Elasticity	ASTM C1548-2	MPa	1600
Charpy Impact Resistance	ASTM D6110	KJ/m <sup>2</sup>	36



## Construction Sites

Apartment Buildings (aluminum support structure)



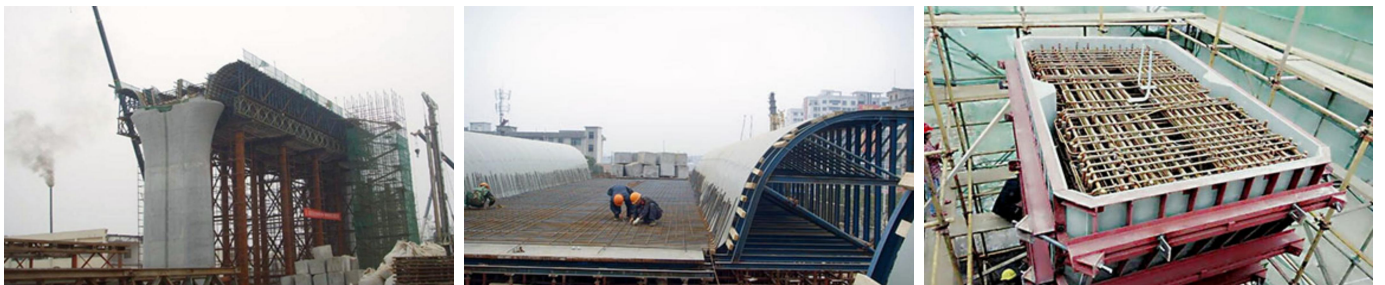
Apartment Buildings (wood support structure)



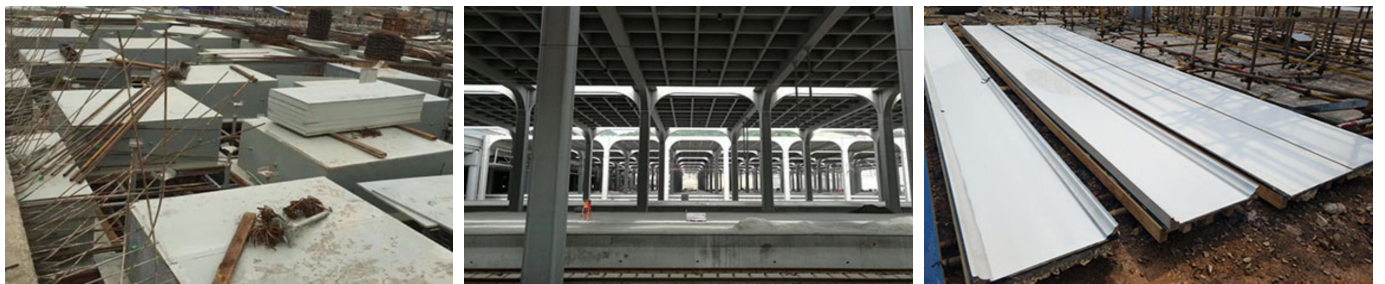
Art Museum (using fair-faced pvc concrete formwork)



Elevated Bridge



High-speed Railway Station





## Options For Customers

### For formwork wholesalers

We are able to provide PVC concrete formwork of different grades, different thicknesses and different dimensions. The size, thickness and density can be customized according to your requirements. We accept mixed specification shipments.



### For builders

We are glad to provide cut-to-size formwork according to your needs, such as 300x2450mm, 400x1200mm, 250x1200mm, 300x600mm, etc., to save labor costs on the construction site. If you need to purchase other accessories in China, such as structural parts, fasteners, tools, etc., we have resource advantages and are willing to help you purchase and ship.



### For developers & general contractors

We can provide you with a complete construction plans according to your drawings. Including the calculation of the total usage of the pvc concrete formwork required by your project, so as to calculate the optimal material cost and comprehensive use cost budget.

If you have contracted part of the concrete formwork project, or all of the concrete formwork project, Boardway construction team is very willing to visit your construction site to provide you with on-site construction technology.



**Welcome to our website to view more custom services.**  
[www.boardwaybuilding.com/comm22/processing\\_capacity.htm](http://www.boardwaybuilding.com/comm22/processing_capacity.htm)

# Boardway Building Material Co., Ltd

PLASTIC SHEETS & PROFILES MANUFACTURING, WHOLESALE AND CUSTOM PROCESSING

[www.boardwaybuilding.com](http://www.boardwaybuilding.com)

[www.boardway.en.alibaba.com](http://www.boardway.en.alibaba.com)



## Contact us

**Helen Lee**

E-mail: [helen@boardwaybuilding.com](mailto:helen@boardwaybuilding.com)

Tel: 86-759-3320922

WhatsApp: 0086 13828266785

Wechat: 13828266785

Skype: helenlee7608

## What We Do?

### Manufacturing, wholesale and custom processing



Boardway has been one of China's top professional manufacturers of plastic sheets since 2006. For 15 years, Boardway has devoted all its energy to the production of plastic sheets.

We have advanced research and development capability, a stable supply capacity, 8 extrusion production lines for foamed PVC board, which can not only meet the fast delivery, but also meet the orders in large quantity. We also have professional technical support and 24/7 high-quality service.

Custom processing is also what Boardway is good at. We provide customers with customized processing services for all plastic products.

For example, to provide customers in the building and decoration industry with CNC cutting, PUR laminating, sanding, chamfering, etc. Provide silk screen printing, UV printing and die cutting for customers in the advertising industry. Provide customers in the manufacturing industry with thermoforming of thermoplastic materials.



China has a large number of suppliers and different product quality, so how to choose a Chinese supplier? Boardway is willing to help you do supplier selection and resource integration.

We have a natural geographical advantage and can help you to confirm the product quality of each supplier, even visit their factory to check the authenticity. What we can do includes sourcing, prototyping, procurement, module assembly, product testing and improvement.

**15**

years manufacturing

**3**

locations

**22,000**

mt annual output

**∞**

solutions