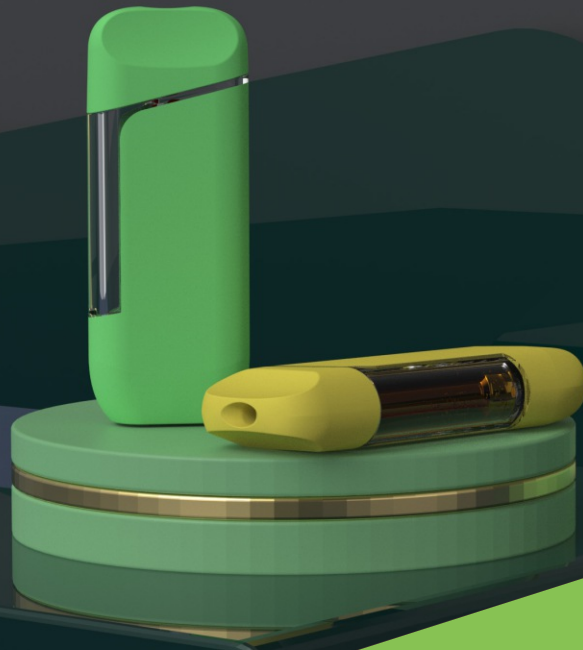


2024



**PRODUCT  
BROCHURE** 

# VAPE INDUSTRY LEADER

For 19 years Transpring has been a pioneer in innovation & technology, and dedicated to quality in the cannabis vape market.

## Contact Us

[info@transpring.com](mailto:info@transpring.com)  
[www.transpring.com](http://www.transpring.com)

1000000+

**1 Million+**  
Products Used Daily

1000K+

**1000k+**  
Monthly Output

20+

**20+**  
Countries & Territories

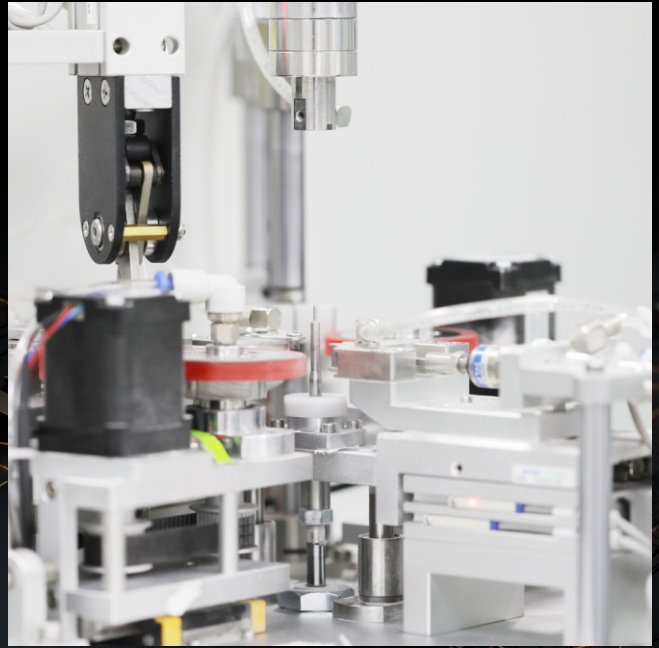
3500+

**3500+**  
Customers Served

# Lean Manufacturing

## State of the Art Facility

Located in the heart of Shenzhen, the innovation hub of China. Outfitted with breakthrough technologies, cutting-edge tools, and sophisticated equipment covering the entire spectrum of the manufacturing process including R&D, engineering, molding, and manufacturing. Transpring is a leading factory in the cannabis vaping industry, which spans 2600 square meters and is staffed by 1000 savvy professionals, ensuring excellent creativity and productivity.



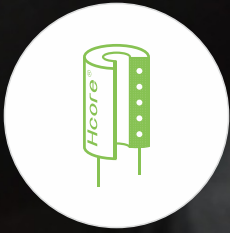
## Local Service

We are committed to providing our customers with the most excellent products and services. In order to better meet the needs of the US market, we have set up branch offices in California and Michigan, offering a one-stop shop for vape solutions including filling, capping, and custom branding on our local inventory. All at advanced machines and competitive prices. In addition, our service team will track your order throughout the process. If you have questions about our products or services, they will be available to assist you at any time.

## Custom Branding



- Prototyping
- Hardware Engineering
- Branding & Labeling
- Testing and Certification
- Inventory Fulfillment
- Technical Support
- Lifecycle Management
- Financing



## Hcore<sup>®</sup> Ceramic Heating Core

Transpring is the second company in this industry to independently develop ceramic heating cores. The Hcore<sup>®</sup> is the masterpiece of us. Compared with the flat and uneven surface ceramic with limited capacity to hold enough oil, Transpring Hcore<sup>®</sup> Ceramic Core adopts exclusive "Micro-vesicular" technology to offer more heating surface area, bioavailability, and higher vaporizing efficiency for a consistently rich taste.



## Nutun<sup>™</sup> Technology

Allowing you to program the microchip in our vaporizers, giving you granular control over the heating profile and enabling you to precisely tune the temperature to preserve the authentic flavors and full character of your extracts. This precise level of control allows you to tailor your vaping experience to your specific preferences, providing a customized and satisfying session consistently.



## Industry First Programmable Cartridge - CRMC<sup>®</sup>

The invention of CRMC<sup>®</sup> is another huge breakthrough. CRMC<sup>®</sup> is the very first programmable cartridge aiming to solve the most challenging problems in this industry once and for all: anti-counterfeit authentication enabled smart chip which makes seed-to-sale tracking not only possible but much more efficient and effective; automated concentrate specific temperature control (battery voltage output adjusted automatically to ensure the optimal vaping experience)

**CONTACT  
OUR  
TEAM**

Contact us today to get our full catalog, pricing, request a sample, or to begin your order.

[info@transpring.com](mailto:info@transpring.com)

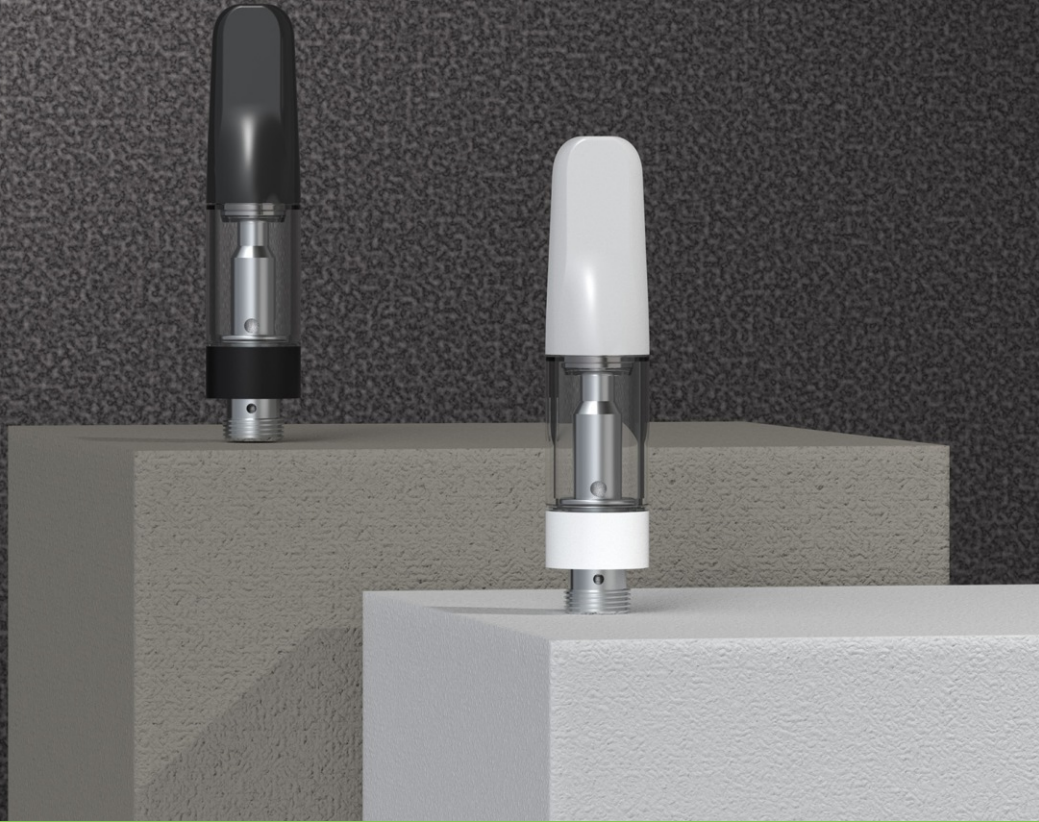
[www.transpring.com](http://www.transpring.com)

Ask About Filling, Capping, & Packaging Solutions

CannaMate™

# A10

## A Leading Flagship Model



### Optimal Performance and Safety

CannaMate™ A10 is designed with Hcore® Ceramic heating technology and high-quality materials of glass tank and SUS316L center post to deliver reliable and enjoyable performance.



### Customize Your cartridges

Transpring provides customizable cartridges with mouthpieces in a range of materials and designs to match your desired styling.



### Performance & Properties

**Volume:** 0.5ml / 1.0ml  
**Resistance:** 1.2-1.6 ohms  
**Aperture Inlet:** 4 x Ø1.6mm  
**Tank Material:** Borosilicate Glass  
**Center Post:** SUS316L



### Various Color Options



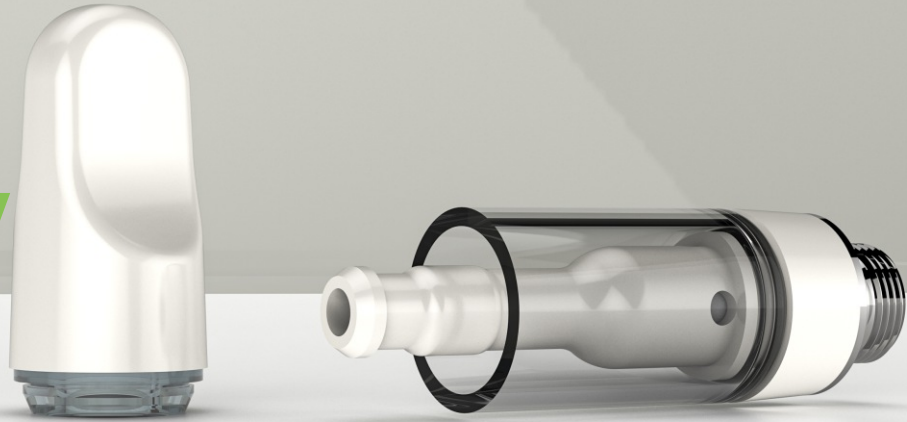
### Custom Mouthpieces

### Custom Logo Printing



CannaMate™

# MELLOW



## Durable Delights, Terpenes Take Flight



### Unbreakable Elegance

Fully made with lustrous white zirconia ceramic, MELLOW boasts exceptional durability, unmatched strength and excellent talent for accentuating the beauty of your premium extracts.

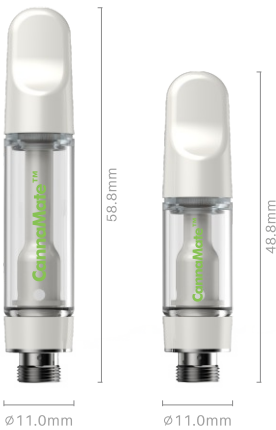


### Flavor Saver

Designed to safeguard the authenticity of extracts. Zirconia ceramic post ensures that your extracts are heated gently, allowing you to savor every nuanced note and aroma.

### Performance & Properties

- Volume:** 0.5ml/ 1.0ml
- Resistance:** 1.2-1.6 ohm
- Aperture Size:** 4 Air Inlets/1.8mm
- Tank Type:** Glass
- Center Post:** Zirconia



Custom Logo Printing

Branding Customization

CannaMate™

# CARBOY

## 2ml Spectacular for the Vaper Leagues



### Giga Tank Magic

Big on volume, big on visibility. Get ready for the long haul with our 2ml CARBOY 5 10 cartridge. Crystal-clear glass - never miss a beat - or a puff!



### Multiple Options

Why settle for one-size-fits-all? Craft your perfect device - choose your mouthpiece color, shape, material, and finger snap-on or auto-capping.

### Performance & Properties

**Volume:** 2.0ml  
**Resistance:** 1.4 ohm  
**Aperture Inlet:** 4 x Ø2.0mm  
**Tank Material:** Glass  
**Center Post:** SUS316L



### Various Color Options



Custom Logo Printing



Custom Surface Techniques

CannaMate™

# SMART CARTRIDGE

## Max Control, Minimal Impact



### Chiptastic Flavor Control

Embedded with a Microchip, A39 is programmed to cap max power output for the perfect low-temp hit, preserving precious terpenes and granting full mastery of your vaping adventure.



### Greener Highs

Win over eco-enthusiasts. Providing an optimal vaping experience similar to disposable but with minimal impact, A39 is the ideal high-performance choice to reach the environmental market.

### Performance & Properties

Volume: 1.0ml  
 Resistance: 1.3 - 1.7 ohm  
 Aperture Inlet: 4 x Ø2.0mm  
 Tank Material: Glass  
 Center Post: SUS316L



Custom Logo Printing



Various Color Options



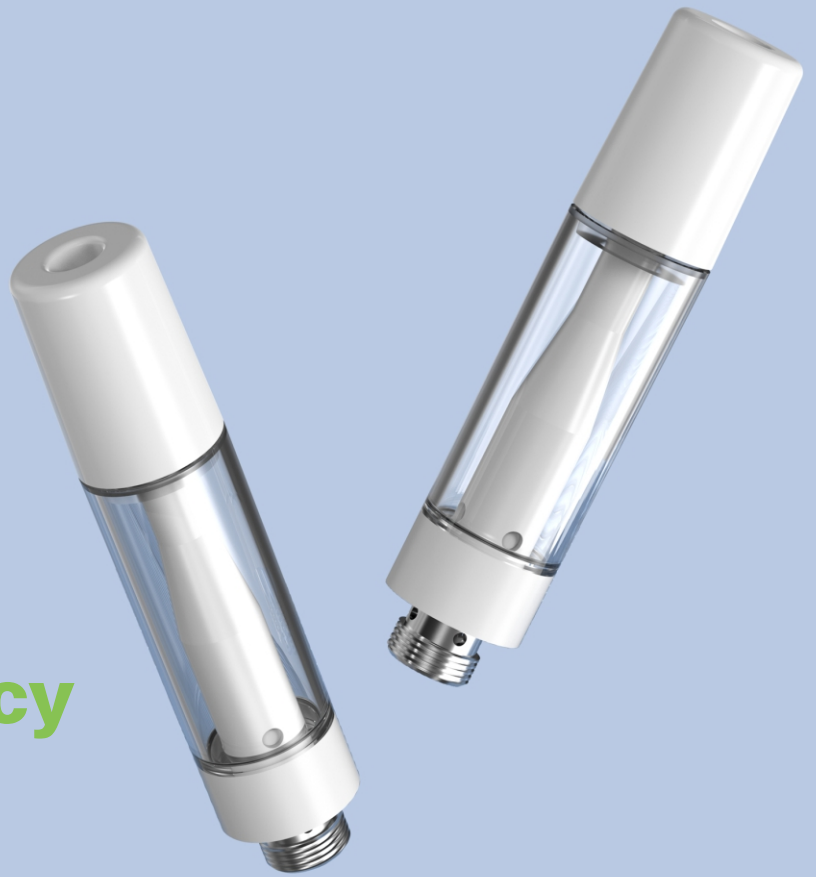
Custom Surface Techniques



CannaMate™

# CLEAR

## Max Flavor, Super Consistency



### Flavor Perfection

With a groundbreaking cotton-free heating structure, Clear is designed to deliver the full essence of your favorite extracts and ensure consistency in every inhale.



### Premium Health Assurance

No heavy metals, no cotton carbonization risks. Clear prioritizes your health without compromising on taste! Choosing a cleaner, safer way to elevate your experience.

### Performance & Properties

- Volume: 1.0ml
- Resistance: 1.2Ω
- Aperture Inlet: 4 x Ø1.7mm
- Tank Type: PC
- Center Post: Ceramic



**Branding Customization**

CannaMate™

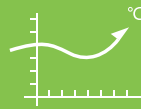
# CHILL

## Taste the Cleanest Hit Ever



### Cotton Free, Center Post Free

Experience smooth, clean hits with CHILL boasting a cotton-free heating core and no-center-post structure. Designed to prevent clogs and burnt flavors, CHILL is perfect for HTE.



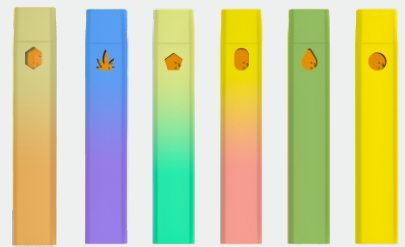
### Tailored Temp for Ultimate Flavor

Customize your ideal temperature curve to ensure every bit of extract is vaporized perfectly, preserving the richest flavors and most potent effects.



### Performance & Properties

- Volume: 0.5ml/1.0ml
- Resistance: 1.2-1.6 ohm
- Battery Capacity: 280mAh
- Tank Type: PCTG
- Battery Housing: Stainless Steel
- Preheat Mode: 4 Taps on the USB Port



### Various Viewing Window and Color Options



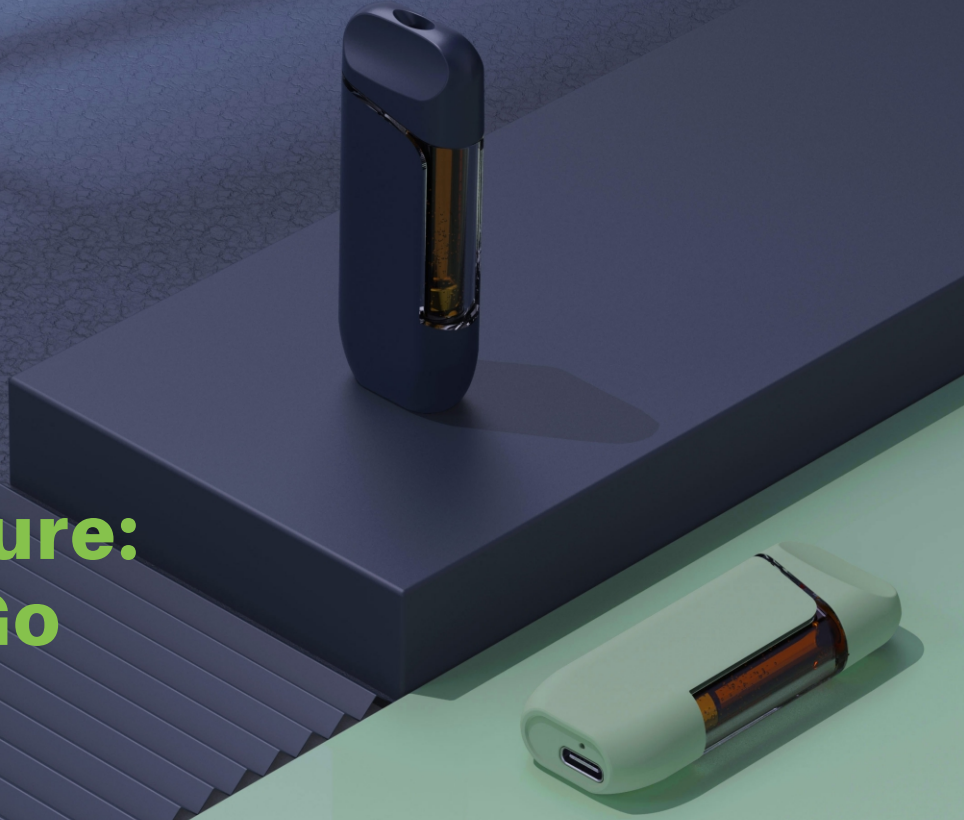
### Custom Logo Printing

### Custom Surface Techniques

CannaMate™

# GLOW

## Pocket Pleasure: Style on the Go



### Unparalleled Consistency

Programmed microchip for variable temp curve, GLOW knows how to keep things cool, consistent, and satisfying. No more burnt hits, every puff is as flavorful as the last.



### Big Views in a Mini Package

2ml GLOW AIO packs a punch with its sleek, portable design and a large viewing window, offering a big stage to showcase the beauty of your premium oils.

### Performance & Properties

Volume:	1.0ml/ 2.0ml
Resistance:	1.2-1.6 ohm
Battery Capacity:	260mAh
Aperture Inlet:	4 x Ø1.6mm
Tank Type:	PCTG
Center Post:	SUS316L
Preheat Mode:	4 Taps on the USB Port



### Various Color Options



### Custom Logo Printing

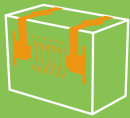


### Custom Surface Techniques

CannaMate™

# TWINX BOX

## Maximize Flavor: Bigger Clouds, Smoother Hits



### One Heating Core, Two Heating Areas

Dp101 is a postless vape with a core featuring dual heating areas, ensuring even heat distribution for richer flavor and larger vapor production.



### Effortless Draw System

Unlock a new level of smoothness with DP101, equipped with dual airways that guarantee seamless inhalation, removing any risks of clogs for an enjoyable vaping experience.

### Performance & Properties

- Volume:** 1.0ml / 2.0ml
- Resistance:** 0.7ohm
- Battery Capacity:** 320mAh
- Tank Type:** PCTG
- Battery Housing:** Aluminum
- Preheat Mode:** 3 Clicks on the Button



Choose from 1.0ml or 2.0ml

Branding Customization

CannaMate™

# MEGA

## Big Vape, Big Wins



### Track Your 6ml Big Guy

Pack an enlarged capacity and intuitive display screen, MEGA allows users to enjoy extended vaping sessions and provides visual feedback for every step of the way.



### First Choice for Power Vaper

Elevate your vaping journey with our cutting-edge dual-core and adjustable airflow technology, enjoying the ultimate blend of power and control.



### Performance & Properties

<b>Volume:</b>	3.5ml/ 6.0ml
<b>Resistance:</b>	1.1-1.6ohm
<b>Battery Capacity:</b>	650mAh
<b>Aperture Inlet:</b>	4 x Ø1.6mm
<b>Tank Material:</b>	PCTG
<b>Center Post:</b>	SUS316L
<b>Preheat Mode:</b>	Two Clicks to Activate



Various Color Options

Custom Logo Printing



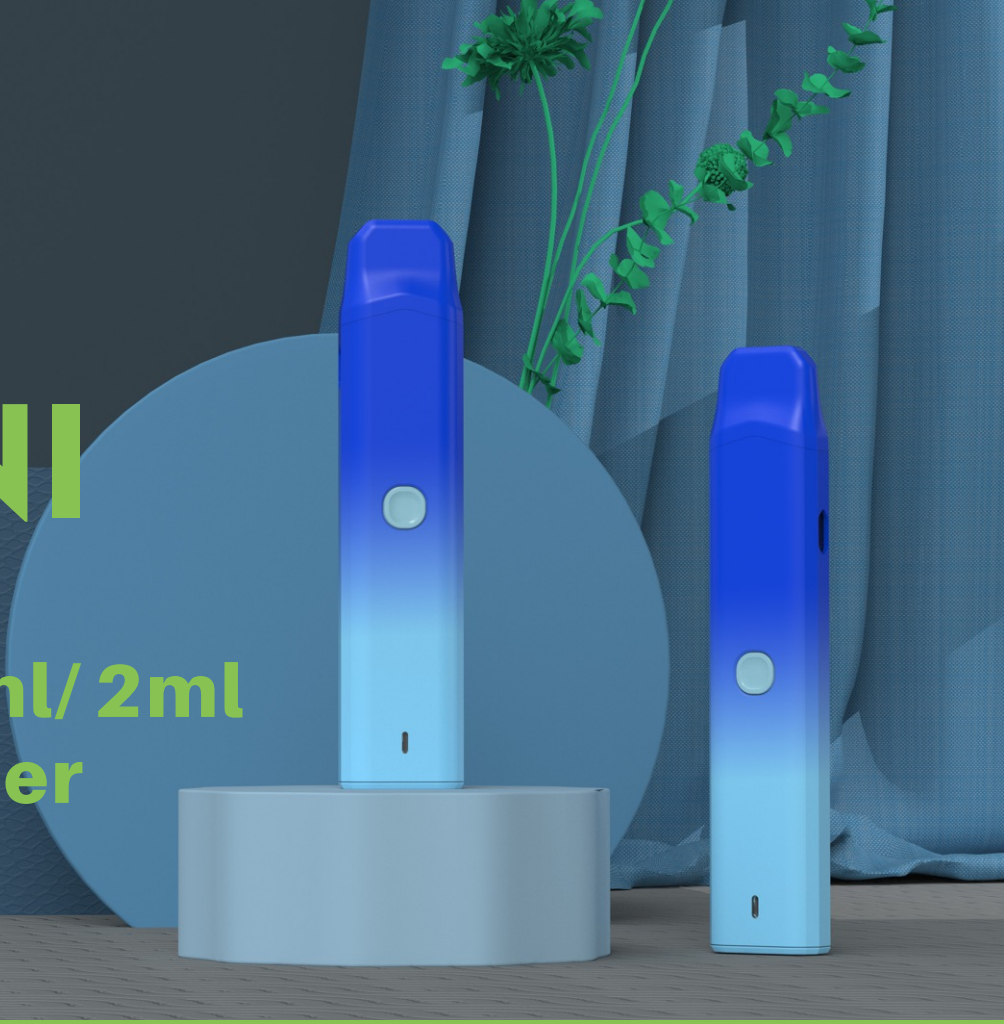
Custom Surface Techniques



CannaMate™

# GEMINI

All in One 1ml/ 2ml  
Dual Chamber  
Disposable



## Double the Power, Double the Flavour

GEMINI features a twin-chamber design (2×0.5ml/ 2×1.0ml), allowing you to enjoy two different flavors in one compact device.



## Effortless Flavor Transition

With a user-friendly flavor slider at the bottom, alternating between the chambers become easy. Effortlessly slide to switch between two flavors or enjoy them both at the same time.



## Performance & Properties

- Volume: 2×0.5ml/ 2×1.0ml
- Resistance: 1.2-1.6ohm
- Battery Capacity: 300mAh
- Aperture Inlet: 2×4 × ∅1.6mm
- Tank Material: PCTG
- Center Post: SUS316L
- Preheat Mode: 2 Clicks on the Button



Various Color Options

Custom Logo Printing



Custom Surface Techniques

CannaMate™

# LITE

## Double Blasts, Double Clouds



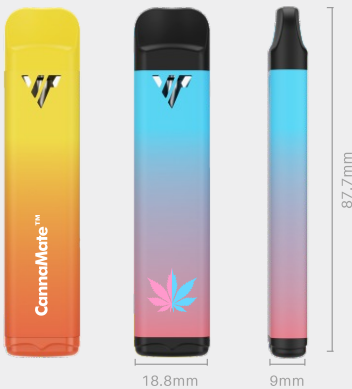
### Extreme Portability

Finger-sized with a compact and lightweight construction, Lite is renowned for its extreme portability.



### Dual Coils

Engineered for superior clouds and perfect hits, the dual-coil design offers more heating area, ensuring even heating and the purest flavor in each puff.



### Performance & Properties

Volume:	1.0ml
Resistance:	1.2-1.6ohm
Battery Capacity:	310mAh
Aperture Inlet:	2 x $\varnothing$ 1.5mm
Tank Material:	PCTG
Center Post:	SUS316L



### Various Color Options

Custom Logo Printing



Custom Surface Techniques

CannaMate™

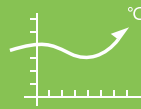
# PEAK

## The Peak of Vape Performance



### High-end

There is a 360-degree visible tank as well as a streamlined and metallic body to CannaMate™ PEAK, making it appear high-end and elegant to capture your customer's attention.



### Customize Power

Find out the most optimal power for an array of different extracts, Peak is supported to be connected with our testing device TSS READER.



### Performance & Properties

- Volume: 0.5ml / 1.0ml / 2.0ml
- Resistance: 1.2-1.6ohm
- Battery Capacity: 300mAh
- Aperture Inlet: 4 x Ø1.6mm
- Tank Material: PCTG
- Center Post: SUS316L
- Preheat Mode: Two Clicks to Activate



### Various Color Options

### Custom Logo Printing



Tailor Your Oil Specific Needs  
(Connect with TSS READER for Optimal Power)



### Custom Surface Techniques



CannaMate™

# AMBER

## Live the Dream, Vape Extreme



### Beautiful and Powerful

With cutting-edge ceramic heating technology and a sleek, minimalist design, CannaMate™ AMBER is the latest rage for cannabis lovers.



### Dual Airways Design

Eliminate clogging with the genius Dual Airways Design, getting the purest and most intense flavor.



### Performance & Properties

Volume:	1.0ml / 2.0ml
Resistance:	1.2-1.6ohm
Battery Capacity:	300mAh
Aperture Inlet:	4 x Ø1.6mm
Tank Material:	PCTG
Center Post:	SUS316L



Various Color Options

Custom Logo Printing



Custom Surface Techniques

CannaMate™

# ACE

## Get the Buzz Without the Mess



### Ultra-Compact

Modern design, sleek and compact. It can easily fit in your pocket or purse. We adopted ACE to be portable and as discreet as possible while still allowing you to savor the purest flavors.



### Dual Airways Design

Dual airways design helps ACE from clogging, improving the vaping experience to an unprecedented level. This device is sure to become a favorite.



### Performance & Properties

Volume:	0.3ml
Resistance:	1.2-1.6ohm
Battery Capacity:	280mAh
Aperture Inlet:	4 x Ø1.6mm
Tank Material:	PCTG
Center Post:	Lead-free Brass Chrome Plated



### Various Color Options

### Custom Logo Printing



### Custom Surface Techniques

CannaMate™

# ZEPHYR

## The Vape Future is in Your Hands



### Small Dia Heating Element Solution

Due to its elegant and stylish ultra-thin design, a small diameter ceramic heating element of less than  $\varnothing 3.5\text{mm}$  is applied, providing unrivaled performance.



### Premium Rechargeable Battery

Long-lasting and safe, UL safety and performance standards are strictly observed to ensure end users are free from the risk of fire, electric shock, and other hazards.



### Performance & Properties

Volume:	1.0ml
Resistance:	1.2-1.6ohm
Battery Capacity:	300mAh
Aperture Inlet:	4 x $\varnothing 1.6\text{mm}$
Tank Material:	PCTG
Center Post:	SUS316L
Preheat Mode:	Tap on the USB Port



Various Color Options



Custom Surface Techniques

Custom Logo Printing

CannaMate™

# VULCAN

## Great Vape for Delta-8-THC



### Strong and Thick Cloud

Another legendary follow-up to D8 series. Equipped with Hcore Silo™ Plus heat element, they are specially designed for those who crave a larger, thicker vaping cloud.



Alu

### More Surface Options for Customization

Manufactured in high-class aluminum profiles means more surface technique available. The customization is endless.



### Performance & Properties

Volume: 1.0ml / 1.5ml / 2.5ml  
 Resistance: 1.0-1.6ohm  
 Battery Capacity: 400mAh  
 Aperture Inlet: 4 x  $\varnothing$ 1.6mm  
 Tank Material: PCTG  
 Center Post: SUS316L



Various Color Options

### Custom Logo Printing



Tailor Your Oil Specific Needs  
 (Connect with TSS READER for Optimal Power)



Custom Surface Techniques

CannaMate™

# HERCULES

## Taste the Power of Super Cloud



### Unmatched Thickness

Atomizing Delta-8-THC to best effect. With Hcore Silo™ Plus serving as the vanguard, they can put out massive vapors in a smooth manner, while reducing the ramp-up time to the minimum.



### Premium Material

Food-grade stainless steel is the main material used for their construction, making them resistant to high temperatures, corrosion, and scaling.



### Performance & Properties

- Volume: 1.0ml / 1.5ml / 2.5ml
- Resistance: 1.0-1.6ohm
- Battery Capacity: 400mAh
- Aperture Inlet: 2 x  $\varnothing$ 2.0mm
- Tank Material: PCTG
- Center Post: SUS316L



Various Color Options

Custom Logo Printing



Custom Surface Techniques

CannaMate™

# PEAK X

## Distinguished Upgrade, Extraordinary Taste



### Great Market Value

Growing from the huge success of CannaMate™ PEAK, PEAK X is an upgrade pod system designed with a long-lasting battery and Type-C port, creating real market value and stable clients.



### Pure and Diversified Flavor

Outfitted with Hcore® ceramic heating element, customers can enjoy the pure and broad range of flavor from your oil.



### Performance & Properties

- Volume: 0.5ml / 1.0ml
- Resistance: 1.2-1.6ohm
- Battery Capacity: 300mAh
- Aperture Inlet: 4 x Ø1.6mm
- Tank Material: PCTG
- Center Post: SUS316L
- Preheat Mode: Two Clicks to Activate



### Various Color Options

### Custom Logo Printing



Tailor Your Oil Specific Needs  
(Connect with TSS READER for Optimal Power)

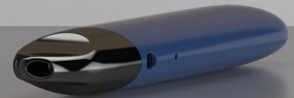


### Custom Surface Techniques

CannaMate™

# ZEPHYR V

## Where Convenience Meets Flavor



### High Portability

High portability and innovation set ZEPHYR V apart from ordinary pods in the market. The choice between flavor and lightweight is no longer a matter of compromise.



### Comforting Experience

Putting in the pod, preheating, then puffing, ZEPHYR V offers a comforting vaping experience from start to finish. The preheating mode removes any clogging or burnt smell problems out there.



### Performance & Properties

Volume:	1.0ml
Resistance:	1.2-1.6ohm
Battery Capacity:	300mAh
Aperture Inlet:	4 x Ø1.6mm
Tank Material:	PCTG
Center Post:	SUS316L
Preheat Mode:	4 Taps to Activate



Various Color Options

### Custom Logo Printing



Tailor Your Oil Specific Needs  
(Connect with TSS READER for Optimal Power)

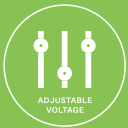


Custom Surface Techniques

CannaMate™

# B230

## Better Battery for the Best Journey



### Voltages Adjustable

There are three voltage settings which are indicated by the color of the LED ring (green: 2.6V/blue: 3.3V/red: 4.0V). Change the voltage with 3 clicks to personalize your vaping experience.



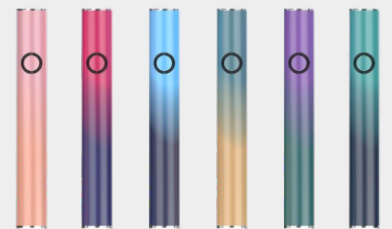
### Preheating Mode

Avoiding clogs and burnt taste, the preheat mode is a considerable innovation for cannabis extracts that are solid or crystalline at room temperature. Just 2 clicks to activate it.



### Performance & Properties

- Battery Capacity:** 230mAh
- Charge Port:** Type-C/Micro-USB
- Housing Material:** SS
- Battery Voltage:** 2.6V, 3.3V, 4.0V
- Activation:** Button Activated
- Preheat Mode:** 2 Clicks on the Button



### Various Color Options

Custom Logo Printing



### Custom Surface Techniques



CannaMate™

# B310-A

## Supports Buttonless, Autodraw Activation



### Easy to Use

B310 is straight forward, ultraportable, and easy to use. No buttons needed, just inhale to activate. Tip lights up to let you know it's working.



### Compatible

With a diameter of 10.5mm, you can connect B310 to most 510-threaded cartridges without having to purchase an adapter separately.



### Performance & Properties

- Battery Capacity:** 310mAh
- Charge Port:** 510 Thread Charger
- Housing Material:** SS
- Battery Voltage:** 3.5V
- Activation:** Draw Activated



Various Color Options

Custom Logo Printing



Custom Surface Techniques

CannaMate™

# B320

## Charge it Once and Use it a Lot



### Super Power and Quick Charge

A huge capacity makes B320 outlast the competition. And once the power is used up, it takes just 40 minutes to fully charge.



### Dual Circuit Protection Board

The safety features of the battery are always a top priority. The Dual Circuit Protection Board ensures the unrivaled safety, quality, reliability and performance of our batteries.



### Performance & Properties

- Battery Capacity:** 320mAh
- Charge Port:** 510 Thread Charger / Micro-USB
- Housing Material:** SS
- Battery Voltage:** 2.6V, 3.3V, 4.0V
- Activation:** Button Activated
- Preheat Mode:** 2 Clicks on the Button



Various Color Options

Custom Logo Printing



Custom Surface Techniques

CannaMate™

# B320-C

## Energy Only with the Best



### Controllable

Everything is at your fingertips. Vape with B320-C battery, 15s preheating mode and 3 voltage options will allow you to vape to your preference.



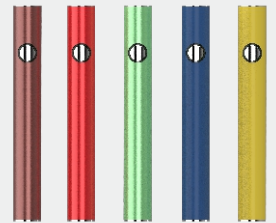
### Reliable and Flexible

Power your vape pen with high-capacity B320-C battery. Featuring 510 thread and Type-C flexible chargers, you can charge it from either end.



### Performance & Properties

**Battery Capacity:** 320mAh  
**Charge Port:** Type-C/510 Thread Charger  
**Housing Material:** SUS304  
**Activation:** Button Activated  
**Battery Voltage:** 2.6V, 3.3V, 4.0V



### Various Color Options



### Custom Surface Techniques

Custom Logo Printing

CannaMate™

# B400

## Dial to the Power You Need



### Extremely Simple to Use

Dial into the preferred power setting by simply twisting the pre-numbered knob on the bottom of B400. There is also a pre-heat function for colder climates or thicker oils.



### 400mAh High Capacity

Boasting 400mAh high capacity, B400 offers enough battery to vape throughout the day without charging, and it features a LED indicator light that will tell you when the time comes to plug it in.

### Performance & Properties

- Battery Capacity: 400mAh
- Charge Port: Type-C
- Housing Material: SUS304
- Battery Wattage:  Variable Wattage from 3.0W-12.0W
- Activation: Button Activation
- Preheat Mode: 2 Clicks on the Button



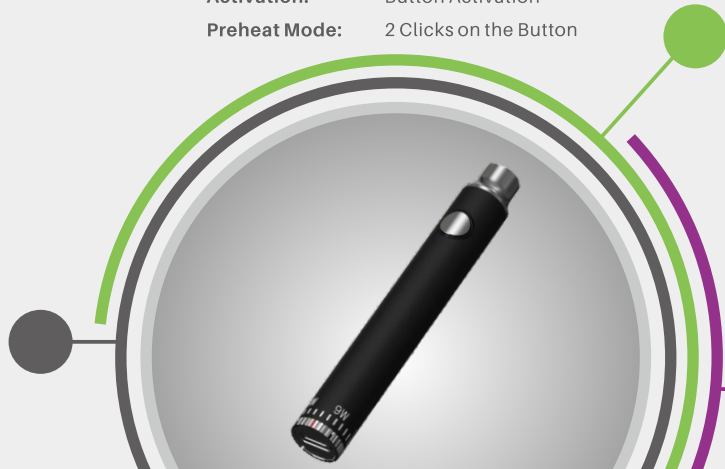
Various Color Options



Custom Surface Techniques



Custom Logo Printing





## **Shenzhen Transpring Enterprise Ltd**

✉ [info@transpring.com](mailto:info@transpring.com)

🌐 [www.transpring.com](http://www.transpring.com)

Shenzhen Transpring Enterprise Co., Ltd All rights reserved. Transpring reserves the right to make changes in specifications and/or to discontinue any product at any time without prior notice or obligation and will not be liable for any consequences from the use of this publication.