

**SHENZHEN KAWASAKI-BULLS
SPORTS GEAR CO.,LTD**

Kawasaki
川崎运动

Kawasaki

COMPANY TENET

Keep a commitment to quality and never miss a shi date

Kawasaki Sports is a professional and reliable supplier of sports products and services, specifically in providing all kinds of sportswear & equipments to wild world sports company and clubs,like Basketball Wear,Baseball Wear, Soccer Wear, Hockey Wear,Rugb Wear,Wresting Singlets,Rash Guard,Yoga Pants,MMA Shorts,Ameri-can Football Wear and So on

COMPANY ADVANTAGE

- 1.11 years experience in doing custom sportswear .
- 2.more stronger and durable sportswear.
- 3.Professional design team.
- 4.kawasaki since 1905.



PRODUCTION PROCESS



SALES CENTER



TEMPLATE



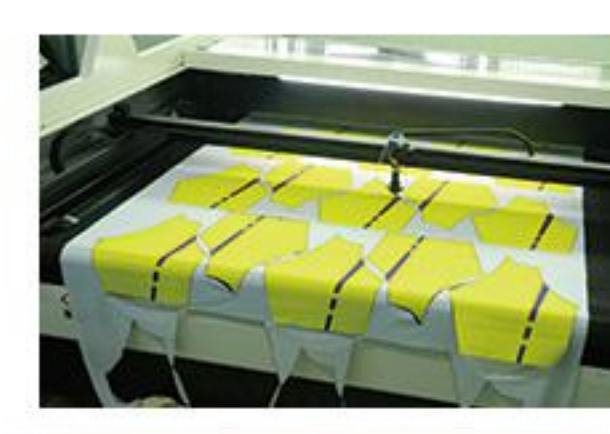
DESIGN



PRINTING



TRANSFER



CUTTING



PIECES QC



SEWING

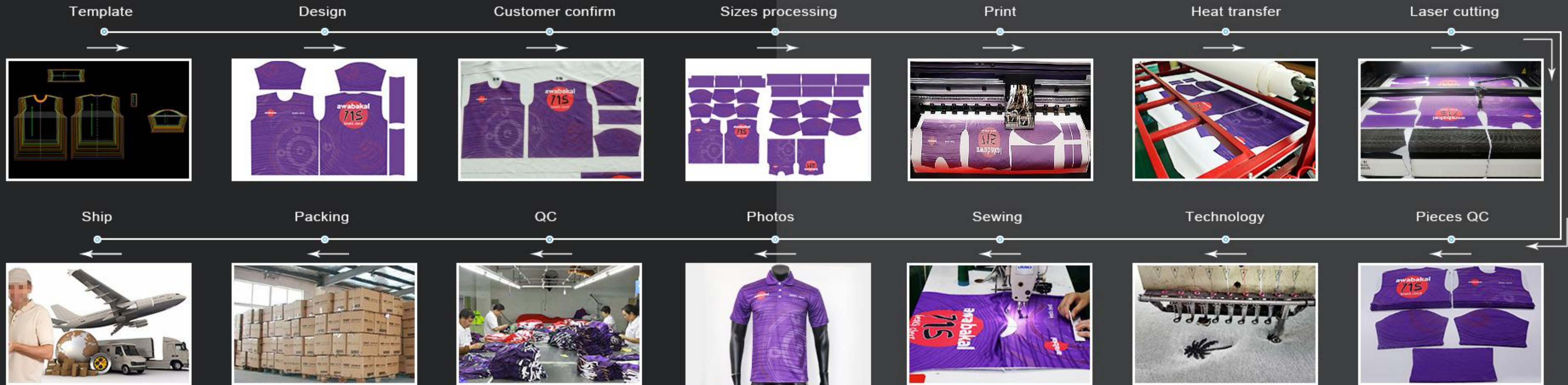


QC&PACKAGING

EIS SYSTEM INTRODUCTION

Now Kawasaki is launching an online tracking platform which you will see your order status when being production, you can see the live pictures of every link in all your orders. It's like you see it in person at the factory. when you place order with us ,we will create the ID for you ,and get on the website :www.kawasaki-sports.online , login in with your ID (ID is your E-mail, password is empty). you can track the order production status.

LET YOU SEE THE ORDER PRODUCTION STATUS IN REAL TIME.

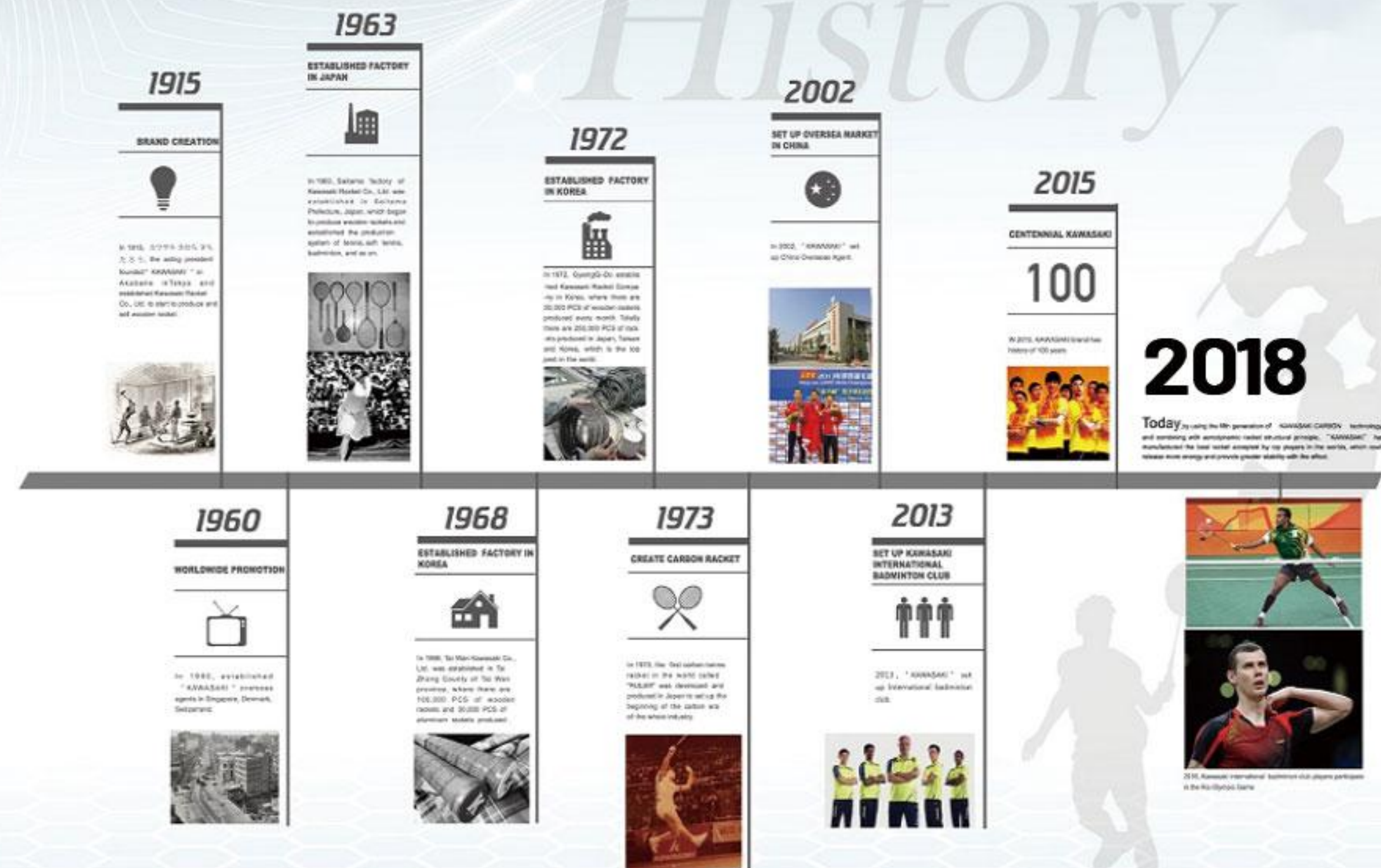


ENGLISH CONTENTS

AMERICA FOOTBALL	1 ~ 4
AUSTRALIAN FOOTBALL	5 ~ 6
BASEBALL SOFTBALL	7 ~ 9
RUGBY UNION	10 ~ 11
RUGBY LEAGUE	12 ~ 13
BASKETBALL	14 ~ 16
SOCCER	17 ~ 18
ICE HOCKEY	19 ~ 20
FIELD HOCKEY	21 ~ 22
LACROSSE	23 ~ 25
NETBALL	26 ~ 27
VOLLEYBALL	28 ~ 30
COMPRESSION	31 ~ 33
WRESTLING	34 ~ 35
TRACK SUIT	36 ~ 37
FISHING	38 ~ 39
CYCLING	40 ~ 41
FASHION	42 ~ 43
ELECTRONIC SPORTS	44 ~ 45
RACING SUIT	46
OUTFIELD	47 ~ 49



History



KAWASAKI was founded in 1915, which is one of the most famous sports brand all over the world!

AMERICAN FOOTBALL

VELOCITY STYLE JERSEY



SIZES : ADULT XS-5XL | YOUTH XS-XL
PART #: AFB-JS-111
FABRIC: 280g interlock spandex + 280g 4way mesh
DESCRIPTION: The Velocity Jersey is a pro style 14-panel design that utilizes the latest materials and fabrication techniques. The Velocity Jersey is constructed from a combination of heavy-weight 4-way stretch mesh and heavyweight spandex. The jersey features double layer reinforced shoulders, cap sleeves and a modern tapered fit. All seams are triple stitched and feature reinforced taping in key areas.

ELITE STYLE JERSEY



SIZES : ADULT XS-5XL | YOUTH XS-XL
PART #: AFB-JS-110
FABRIC: 280g interlock spandex + 280g 4way mesh
DESCRIPTION: The Elite Jersey is an incredible 14-panel design modelled after the pro style jerseys of today. The Elite Jersey is fabricated from a combination of heavy-weight 4-way stretch mesh and heavyweight spandex. The jersey features double layer reinforced shoulders, cap sleeves and a modern tapered fit. All seams are triple stitched and feature reinforced taping in key areas including collar.

CUT FABRIC



INTERLOCK SPANDEX
-280GSM

4WAY MESH-280 GSM

MAN MEASUREMENT unit: cm

PART	YXS	YS	YM	YL	YXL	XS
1/2CHEST	37	39	41	43	46	42.5
BACK LENGTH (HSP)	68	70	72	74	76	85

NAM MEASUREMENT unit: cm

PART	S	M	L	XL	2XL	3XL	4XL	5XL
1/2CHEST	45	47.5	50	52.5	55.5	57.5	60	62.5
BACK LENGTH (HSP)	86	87	88	89	91	93	95	97

CUT FABRIC



INTERLOCK SPANDEX
-280GSM

4WAY MESH-280 GSM

MAN MEASUREMENT unit: cm

PART	YXS	YS	YM	YL	YXL	XS
1/2CHEST	37	39	41	43	46	42.5
BACK LENGTH (HSP)	68	70	72	74	76	85

MAN MEASUREMENT unit: cm

PART	S	M	L	XL	2XL	3XL	4XL	5XL
1/2CHEST	45	47.5	50	52.5	55.5	57.5	60	62.5
BACK LENGTH (HSP)	86	87	88	89	91	93	95	97

WARRIOR CAP SLEEVE JERSEY



SIZES : ADULT XS-5XL | YOUTH XS-XL
PART #: AFB-JS-112
FABRIC: 280g interlock spandex + 280g 4way mesh
DESCRIPTION: The Warrior Cap Sleeve Jersey is a classic spandex and mesh 11-panel design that features a modern neckline and excellent ventilation. This design features heavyweight 4-way stretch mesh, double reinforced spandex shoulders, cap sleeves and a modern tapered fit. All seams are triple stitched and feature reinforced taping in key areas including collar..

CUT
FABRIC


INTERLOCKSPANDEX
-280GSM
4WAYMESH-280GSM

MAN MEASUREMENT		unit: cm					
PART	YXS	YS	YM	YL	YXL	XS	
1/2CHEST	40	42	45	47	49	45.5	
BACK LENGTH (HSP)	66	68	72	74	76	85	

MAN MEASUREMENT		unit: cm							
PART	S	M	L	XL	2XL	3XL	4XL	5XL	
1/2CHEST	45	47.5	50	52.5	55.5	57.5	60	62.5	
BACK LENGTH (HSP)	86	87	88	89	91	93	95	97	

STAR STYLE JERSEY



SIZES : ADULT XS-5XL | YOUTH XS-XL
PART #: AFB-JS-114
FABRIC: 280g interlock spandex + 280g 4way mesh
DESCRIPTION: Our Star Jersey is an economical variation of our Warrior Jersey that features a modern tapered fit with cap sleeve 5-panel design that is both stylish and economical. It is constructed of high strength, 2-way mesh with double layer reinforced spandex shoulders and sleeves. All seams are triple stitched and feature reinforced taping in key areas.

CUT
FABRIC


INTERLOCKSPANDEX
-280GSM
4WAYMESH-280GSM

MAN MEASUREMENT		unit: cm					
PART	YXS	YS	YM	YL	YXL	XS	
1/2CHEST	37	39	41	43	46	42.5	
BACK LENGTH (HSP)	68	70	72	74	76	85	

MAN MEASUREMENT		unit: cm							
PART	S	M	L	XL	2XL	3XL	4XL	5XL	
1/2CHEST	45	47.5	50	52.5	55.5	57.5	60	62.5	
BACK LENGTH (HSP)	86	87	88	89	91	93	95	97	

WARP SPEED STYLE JERSEY



SIZES : ADULT XS-5XL | YOUTH XS-XL
PART #: AFB-JS-113
FABRIC: 280g interlock spandex + 280g 4way mesh
DESCRIPTION: Our Warp Speed Jersey features a modern tapered fit and cap sleeve 6-panel design that is both stylish and economical. It is constructed of high strength, high stretch heavyweight spandex with 4-way mesh side inserts. The Warp Speed features double layer reinforced spandex shoulders and sleeves. This snug fit jersey also features triple stitching, reinforced seams and maximum logo flexibility.

CUT
FABRIC


INTERLOCKSPANDEX
-280GSM
4WAYMESH-280GSM

MAN MEASUREMENT		unit: cm					
PART	YXS	YS	YM	YL	YXL	XS	
1/2CHEST	37	39	41	43	46	42.5	
BACK LENGTH (HSP)	68	70	72	74	76	85	

MAN MEASUREMENT		unit: cm							
PART	S	M	L	XL	2XL	3XL	4XL	5XL	
1/2CHEST	45	47.5	50	52.5	55.5	57.5	60	62.5	
BACK LENGTH (HSP)	86	87	88	89	91	93	95	97	

WARRIOR TRADITIONAL SLEEVE JERSEY



SIZES : ADULT XS-5XL | YOUTH XS-XL
PART #: AFB-JS-119
FABRIC: 280g interlock spandex + 280g 4way mesh
DESCRIPTION: The Warrior Traditional Sleeve Jersey is a classic spandex and mesh 11-panel design that features a modern neckline and excellent ventilation. This design features heavyweight 4-way stretch mesh, double reinforced spandex shoulders, traditional sleeves and a modern tapered fit. All seams are triple stitched and feature reinforced taping in key areas including collar.

CUT
FABRIC


INTERLOCKSPANDEX
-280GSM
4WAYMESH-280GSM

MAN MEASUREMENT		unit: cm					
PART	YXS	YS	YM	YL	YXL	XS	
1/2CHEST	40	42	45	47	49	45.5	
BACK LENGTH (HSP)	66	68	72	74	76	85	

MAN MEASUREMENT		unit: cm							
PART	S	M	L	XL	2XL	3XL	4XL	5XL	
1/2CHEST	45	47.5	50	52.5	55.5	57.5	60	62.5	
BACK LENGTH (HSP)	86	87	88	89	91	93	95	97	

GRIDIRON STYLE JERSEY



SIZES : ADULT XS-5XL | YOUTH XS-XL
PART #: AFB-JS-115
FABRIC: 280g interlock spandex + 200g 2way mesh
DESCRIPTION: Our Gridiron Jersey is a belt length, cap sleeve, 7-panel design made from 2-way stretch mesh with double layer spandex shoulders and side inserts. The Gridiron Jersey features double reinforced stitching on all seams. Traditional design and large front and back panels allow maximum design and number flexibility. A budget friendly design with pro style features.

CUT FABRIC



INTERLOCKSPANDEX
-280GSM
2WAYMESH-200GSM

MAN MEASUREMENT unit: cm					
PART	YXS	YS	YM	YL	YXL
1/2CHEST	40	42	45	48	50
BACK LENGTH (HSP)	53	55	58	62	65

MAN MEASUREMENT unit: cm								
PART	S	M	L	XL	2XL	3XL	4XL	5XL
1/2CHEST	50	54	58	62	66	70	74	78
BACK LENGTH (HSP)	70	72	74	76	78	80	82	84

PATRIOT FLAG JERSEY



SIZES : ADULT XS-5XL | YOUTH XS-XL
PART #: AFB-JS-131
FABRIC: 190g interlock + 140g 2way mesh
DESCRIPTION: Our new Flag Football Jersey is a belt length 5-panel design with a v-neck collar. The Flag Jersey features similar styling to our traditional jerseys in a non-shoulder pad size. The design features a light-weight mesh front and interlock shoulders and sleeves. Reinforced overlock stitching on all seams.

CUT FABRIC



INTERLOCKSPANDEX
-190GSM
2WAYMESH-140GSM

MAN MEASUREMENT unit: cm					
PART	YXS	YS	YM	YL	YXL
1/2CHEST	37	39.5	42	45.5	49.5
BACK LENGTH (HSP)	49	53	56	61.5	66.5

MAN MEASUREMENT unit: cm							
PART	S	M	L	XL	2XL	3XL	4XL
1/2CHEST	53.5	56	58.5	62	66	68.5	71
BACK LENGTH (HSP)	75	77.5	80	83	85	87.5	90.4

TRIBUTE FANWEAR JERSEY



SIZES : ADULT XS-5XL | YOUTH XS-XL
PART #: AFB-JS-115
FABRIC: 190g interlock + 140g 2way mesh
DESCRIPTION: Our Gridiron Jersey is a belt length, cap sleeve, 7-panel design made from 2-way stretch mesh with double layer spandex shoulders and side inserts. The Gridiron Jersey features double reinforced stitching on all seams. Traditional design and large front and back panels allow maximum design and number flexibility. A budget friendly design with pro style features.

CUT FABRIC



INTERLOCKSPANDEX
-190GSM
2WAYMESH-140GSM

WOMEN MEASUREMENT unit: cm					
PART	XS	S	M	L	XL
1/2CHEST	42.5	45	47.5	50	52.5
BACK LENGTH (HSP)	62	64	66	68	70

MAN MEASUREMENT						unit: cm						
PART	YXS	YS	YM	YL	YXL	S	M	L	XL	2XL	3XL	4XL
1/2CHEST	37	39.5	42	45.5	49	53	56	58.5	62	66	68.5	71
BACK LENGTH (HSP)	46	49	54	58	63	71	73	76	78	81	83	86

VICTORY PANTS



SIZES : ADULT XS - 5XL | YOUTH XS-XL
PART #: AFB-PS-110 (Sublimated), AFB-PH-110 (Hybrid)
FABRIC: 280g interlock spandex + 280g 4way mesh
DESCRIPTION: Our premium Victory Football Pant Series is fabricated from ultra-durable heavy-weight spandex fabric with heavy-weight mesh side inserts for ventilation. The Victory Pant features a slotted silicon anti-slip waistband, integrated belt, built-in thigh and knee pad pockets and fly-less design. The Victory Pant is offered in fully sublimated and hybrid versions. Hybrid version features pre-dyed body panels with sublimated belt and side mesh insert.

CUT FABRIC



INTERLOCKSPANDEX
-280GSM
4WAYMESH-280GSM

MAN MEASUREMENT unit: cm					
PART	YXS	YS	YM	YL	YXL
OUTSEAM	50	52	53	54	55
1/2HIP	30.5	33	35.5	38	40.6

MAN MEASUREMENT		unit: cm						
PART	XS	S	M	L	XL	2XL	3XL	4XL
OUTSEAM	60	60	61	61	62	63	64	65
1/2HIP	43	45.7	48.2	50.8	53.4	55.9	58.4	60.9

ATTACK PANTS



SIZES : ADULT XS - 5XL | YOUTH XS-XL
PART #: AFB-PS-111 (Sublimated), AFB-PH-111 (Hybrid)
FABRIC: 280g interlock spandex + 280g 4way mesh
DESCRIPTION: Our premium Attack Football Pant Series is fabricated from ultra-durable heavy-weight spandex fabric with heavy-weight mesh side inserts for ventilation. The Attack Pant features a slotted silicon anti-slip waistband, integrated belt, built-in thigh and knee pad pockets and fly-less design. The Attack Pant is offered in fully sublimated and hybrid versions. Hybrid version features pre-dyed body panels with sublimated belt and side mesh insert.

CUT FABRIC



INTERLOCKSPANDEX
-280GSM

4WAYMESH-280GSM

MAN MEASUREMENT unit: cm

PART	YXS	YS	YM	YL	YXL
OUTSEAM	50	52	53	54	55
1/2HIP	30.5	33	35.5	38	40.6

MAN MEASUREMENT unit: cm

PART	XS	S	M	L	XL	2XL	3XL	4XL
OUTSEAM	60	60	61	61	62	63	64	65
1/2HIP	43	45.7	48.2	50.8	53.4	55.9	58.4	60.9

GAME DAY PANTS



SIZES : ADULT XS - 5XL | YOUTH XS-XL
PART #: AFB-PS-112 (Sublimated), AFB-PH-112 (Hybrid)
FABRIC: 280g interlock spandex + 280g 4way mesh
DESCRIPTION: Our premium Game Day Football Pant Series is fabricated from ultra-durable heavy-weight spandex fabric with heavy-weight top-to-bottom mesh side inserts for ventilation. The Game Day Pant features a slotted silicon anti-slip waistband, integrated belt, built-in thigh and knee pad pockets and fly-less design. The Game Day Pant is offered in fully sublimated and hybrid versions. Hybrid version features pre-dyed body panels with sublimated belt and side mesh insert.

CUT FABRIC



INTERLOCKSPANDEX
-280GSM

4WAYMESH-280GSM

MAN MEASUREMENT unit: cm

PART	YXS	YS	YM	YL	YXL
OUTSEAM	50	52	53	54	55
1/2HIP	30.5	33	35.5	38	40.6

MAN MEASUREMENT unit: cm

PART	XS	S	M	L	XL	2XL	3XL	4XL
OUTSEAM	60	60	61	61	62	63	64	65
1/2HIP	43	45.7	48.2	50.8	53.4	55.9	58.4	60.9

SALUTE PANTS



SIZES : ADULT XS - 5XL | YOUTH XS-XL
PART #: AFB-PS-113 (Sublimated), AFB-PD-113 (Pre Dyed)
FABRIC: 280g interlock spandex
DESCRIPTION: Our premium Salute Football Pants are fabricated from ultra-durable heavyweight spandex fabric. The Salute Pant also features a slotted silicon anti-slip waistband, integrated belt, built-in thigh and knee pad pockets and fly-less design. The Salute Pant is offered in 2 styles – fully sublimated and an all dyed version.

CUT FABRIC



INTERLOCKSPANDEX
-280GSM

4WAYMESH-280GSM

MAN MEASUREMENT unit: cm

PART	YXS	YS	YM	YL	YXL
OUTSEAM	50	52	53	54	55
1/2HIP	30.5	33	35.5	38	40.6

MAN MEASUREMENT unit: cm

PART	XS	S	M	L	XL	2XL	3XL	4XL
OUTSEAM	60	60	61	61	62	63	64	65
1/2HIP	43	45.7	48.2	50.8	53.4	55.9	58.4	60.9

STARTER PANTS



SIZES : ADULT XS - 5XL | YOUTH XS-XL
PART #: AAFB-PS-116 (Sublimated), AFB-PD-116 (Pre Dyed)
FABRIC: 280g interlock spandex
DESCRIPTION: Our Starter Football Pants are fabricated from the same ultra-durable heavyweight spandex fabric as our premium line of pants. The Starter pant features built-in thigh and knee pad pockets, fly-less design and internal draw-string closure. No belt is required. The Starter Pant is offered in 2 styles – fully sublimated and an all dyed version.

CUT FABRIC



INTERLOCKSPANDEX
-280GSM

4WAYMESH-280GSM

MAN MEASUREMENT unit: cm

PART	YXS	YS	YM	YL	YXL
OUTSEAM	50	52	53	54	55
1/2HIP	30.5	33	35.5	38	40.6

MAN MEASUREMENT unit: cm

PART	XS	S	M	L	XL	2XL	3XL	4XL
OUTSEAM	60	60	61	61	62	63	64	65
1/2HIP	43	45.7	48.2	50.8	53.4	55.9	58.4	60.9

Australian Football

LIGHTNING JERSEY PRO NECK



DESCRIPTION: Our Lightning jersey pro neck made using heavyweight 260 GSM double sided interlock fabric ,feature reinforced seams and standard pro collar for durability, the cuff binding is made up of a single side stretched fabric ,to give the arm a better stretch and comfort

CUT FABRIC



260 GSM double sided interlock fabric

YOUTH SIZE

unit: cm

PART	4	6	8	10	12	14	16	18
FRONT LENGTH	57	58	59	60	61	62	63	63
BACK LENGTH	65	64	65	66	67	68	69	70
CHEST	41	42	43	44	45	46	47	48

ADULT SIZE

unit: cm

PART	XS	S	M	L	XL	2XL	3XL	4XL
FRONT LENGTH	66	67	68	70	72	74	76	78
BACK LENGTH	71	72	73	75	77	79	81	83
CHEST	50	51	52	54	56	58	60	62

LIGHTNING JERSEY V NECK



DESCRIPTION: Using heavyweight 260 GSM double sided interlock fabric ,feature reinforced seams to keep the jersey in high durability, the collar made using traditional v neck ,keep the whole jersey in strongest seams, the cuff binding is made up of a single side stretched fabric ,to give the arm a better stretch and comfort.

CUT FABRIC



260 GSM double sided interlock fabric

YOUTH SIZE

unit: cm

PART	4	6	8	10	12	14	16	18
FRONT LENGTH	57	58	59	60	61	62	63	63
BACK LENGTH	65	64	65	66	67	68	69	70
CHEST	41	42	43	44	45	46	47	48

ADULT SIZE

unit: cm

PART	XS	S	M	L	XL	2XL	3XL	4XL
FRONT LENGTH	66	67	68	70	72	74	76	78
BACK LENGTH	71	72	73	75	77	79	81	83
CHEST	50	51	52	54	56	58	60	62

LIGHTNING JERSEY WINGS NECK



DESCRIPTION: Using heavyweight 260 GSM double sided interlock fabric ,feature reinforced seams to keep the jersey in high durability, the collar made using traditional v neck ,keep the whole jersey in strongest seams, the cuff binding is made up of a single side stretched fabric ,to give the arm a better stretch and comfort.

CUT FABRIC



260 GSM double sided i
nterlock fabric

YOUTH SIZE

unit: cm

PART	4	6	8	10	12	14	16	18
FRONT LENGTH	57	58	59	60	61	62	63	63
BACK LENGTH	65	64	65	66	67	68	69	70
CHEST	41	42	43	44	45	46	47	48

ADULT SIZE

unit: cm

PART	XS	S	M	L	XL	2XL	3XL	4XL
FRONT LENGTH	66	67	68	70	72	74	76	78
BACK LENGTH	71	72	73	75	77	79	81	83
CHEST	50	51	52	54	56	58	60	62

AFL SHORTS



DESCRIPTION: Using heavyweight 220 GSM Woven fabric ,full sublimated available,feature reinforced seams ,sometime sewing a anti-slip belt in the back side of waistband ,the AFL shorts offer a combination of comfort and feature resistant ,which is the best shorts style for AFL player

CUT FABRIC



220G WOVEN

STANDARD FIT

unit: cm

PART	XS	S	M	L	XL	2XL
HIP	52	54	56	58	60	62
LEG OPENNING	28	29	30	32	33	34
FRONT RAISE	29	30	31	32	33	34
WIDEST POINT AT LEG	34	35	36	37	38	39

Baseball Softball

DINGER JERSEY SERIES



SIZES : MEN XS - 3XL | YOUTH XS-XL
PART #: BA-JS-116 (Full Button)
FABRIC: 180g pinhole
DESCRIPTION: The Dinger Series Short Sleeve Baseball Jerseys are a traditional mens jersey offered in 2 different profiles - Short Sleeve and Sleeveless. In addition each profile can be ordered as a 2-Button or a Full Button jersey. The Dinger Series is manufactured from our pinhole mesh fabric. This fabric offers a high degree of moisture management and ventilation coupled with excellent comfort, range of motion and durability. Optional sublimated twill numbers are available.

CUT FABRIC



PINHOLE-180 GSM

MAN	MEASUREMENT										unit: cm
PART	YS	YM	YL	YXL	S	M	L	XL	2XL	3XL	
1/2CHEST	42.5	45	47	50	52	55	60	65	70	75	
FRONT LENGTH(HSP)	60	64.5	68.5	73.5	75	78	80	82	85	88	

ACE JERSEY SERIES



SIZES : WOMEN XS-3XL | YOUTH XS-XL
PART #: BA-JS-127 (Full Button)
FABRIC: 180g pinhole
DESCRIPTION: The Ace Series Softball jerseys are offered in both a traditional womens racerback sleeveless design and a short sleeve design. Both sleeveless and short sleeve are offered in 2 different profiles - 2 Button and Full Button. The Ace Series is manufactured from our pinhole mesh fabric. This fabric offers a high degree of moisture management and ventilation coupled with excellent comfort, range of motion and durability. Optional sublimated twill numbers are available.

CUT FABRIC



PINHOLE-180 GSM

WOMEN'S MEASUREMENT							unit: cm
PART	YXL	S	M	L	XL	2XL	3XL
1/2CHEST	30	45	50	55	60	66	70
FRONT LENGTH(HSP)	67	67	70	72	73	75	77

DINGER JERSEY SERIES



SIZES : MEN XS - 3XL | YOUTH XS-XL
PART #: BA-JS-111 (Full Button)
FABRIC: 180g pinhole
DESCRIPTION: The Dinger Series Short Sleeve Baseball Jerseys are a traditional mens jersey offered in 2 different profiles - Short Sleeve and Sleeveless. In addition each profile can be ordered as a 2-Button or a Full Button jersey. The Dinger Series is manufactured from our pinhole mesh fabric. This fabric offers a high degree of moisture management and ventilation coupled with excellent comfort, range of motion and durability. Optional sublimated twill numbers are available.

CUT FABRIC



PINHOLE-180 GSM

MAN MEASUREMENT unit: cm										
PART	YS	YM	YL	YXL	S	M	L	XL	2XL	3XL
1/2CHEST	42.5	45	47	50	52	55	60	65	70	75
FRONT LENGTH(HSP)	60	64.5	68.5	73.5	75	78	80	82	85	88

ACE JERSEY SERIES



SIZES : WOMEN XS-3XL | YOUTH XS-XL
PART #: BA-JS-120 (2-Button)
FABRIC: 180g pinhole
DESCRIPTION: The Ace Series Softball jerseys are offered in both a traditional womens racerback sleeveless design and a short sleeve design. Both sleeveless and short sleeve are offered in 2 different profiles - 2 Button and Full Button. The Ace Series is manufactured from our pinhole mesh fabric. This fabric offers a high degree of moisture management and ventilation coupled with excellent comfort, range of motion and durability. Optional sublimated twill numbers are available.

CUT FABRIC



PINHOLE-180 GSM

MAN MEASUREMENT unit: cm										
PART	S	M	L	XL	2XL	3XL				
1/2CHEST	30	45	55	60	66	70				
CENTER BACK LENGTH	67	67	70	72	73	75				

STARTER JERSEY SERIES



SIZES : MEN XS - 4XL | WOMEN XS-3XL | YOUTH XS-XL
PART #: NECK: Men BA-JS-140 / Crew Neck BA-JS-141 / V-Neck Women BA-JS-142 / Crew Neck BA-JS-143 / V-Neck
FABRIC: 180g pinhole
DESCRIPTION: The Starter Series is an economical baseball/-softball jersey offered in either crew neck or V-neck styles. Manufactured from the same high tech pinhole mesh fabric as our Dinger and Ace Jerseys the Starter Series offers a high degree of moisture management and ventilation coupled with excellent comfort, range of motion and durability. Please note that Women's cut features cap sleeves

CUT FABRIC



PINHOLE-180 GSM

MEN'S MEASUREMENT unit: cm										
PART	YS	YM	YL	YXL	S	M	L	XL	2XL	3XL
1/2CHEST	42.5	45	47	50	52	55	60	65	70	75
FRONT LENGTH(HSP)	60.5	64.5	68.5	73.5	75	78	80	82	85	88

WOMEN'S MEASUREMENT unit: cm							
PART	YXL	S	M	L	XL	2XL	3XL
1/2CHEST	30	45	50	55	60	66	70
CENTER BACK LENGTH	67	67	70	72	73	75	77

HOME RUN BASEBALL PANTS



SIZES : MEN XS-4XL | YOUTH XS-XL
PART #: BA-PS-111 (Full Sublimated)
FABRIC: 280g spandex poly
DESCRIPTION: Our Home Run pants are a full length baseball pant offered in a fully sublimated version as well as a hybrid version where just the sides, belt loops and pocket trim is sublimated. Manufactured from our heavyweight interlock fabric these pants are both durable and incredibly comfortable.

CUT FABRIC



SPANDEX POLY-280 GSM

MAN MEASUREMENT unit: cm										
PART	YS	YM	YL	YXL	S	M	L	XL	2XL	3XL
1/2HIP	39	42	45	49	52	55	58	63	66	69
OUTSEAM	80	84	89	93.2	102	105	108	111	114	118

ACE SOFTBALL PANTS



SIZES : WOMEN XS-2XL | YOUTH XS-XL
PART #: BA-PH-116 (Hybrid)
FABRIC: 280g spandex poly
DESCRIPTION: Our Ace Womens Softball pants are a 3/4 length softball pant offered in a fully sublimated version as well as a hybrid version where just the sides, belt loops and pocket trim is sublimated. Manufactured from our heavyweight interlock fabric these pants are both durable and incredibly comfortable.

CUT FABRIC



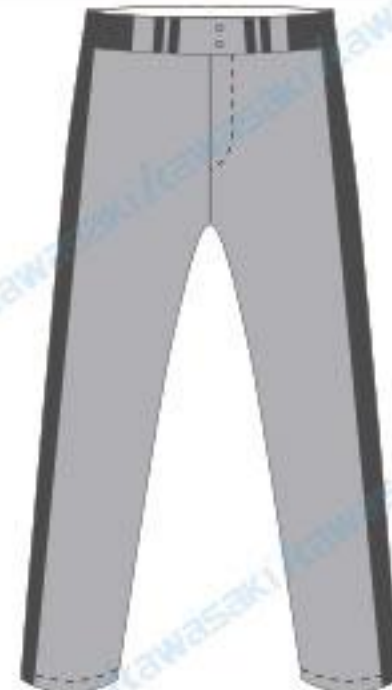
SPANDEX POLY-280 GSM

WOMEN'S MEASUREMENT

PART	YS	YM	YL	YXL	S	M	L	XL	2XL
1/2HIP	37	39	41	45	47	49	52	55	58
OUTSEAM	54	60	66	72	75	77	79	82	84

unit: cm

HOME RUN BASEBALL PANTS



SIZES : MEN XS-4XL | YOUTH XS-XL
PART #: A-PH-111 (Hybrid)
FABRIC: 280g spandex poly
DESCRIPTION: Our Home Run pants are a full length baseball pant offered in a fully sublimated version as well as a hybrid version where just the sides, belt loops and pocket trim is sublimated. Manufactured from our heavyweight interlock fabric these pants are both durable and incredibly comfortable.

CUT FABRIC



SPANDEX POLY-280 GSM

MAN MEASUREMENT

PART	YS	YM	YL	YXL	S	M	L	XL	2XL	3XL
1/2HIP	39	42	45	49	52	55	58	63	66	69
OUTSEAM	80	84	89	93.2	102	105	108	111	114	118

unit: cm

RUGBY UNION

EDGE JERSEY TRADITION



SIZES : MEN XS - 5XL | WOMEN 5-12
PART #: RU-JS-105 / V-Neck
Collar RU-JS-106 / Tradition Collar
FABRIC: 260g interlock polyester
DESCRIPTION: Our Edge Jersey features a standard fit and is available in two collar choices - V Neck and Tradition. Manufactured using our heavyweight interlock the Edge jersey provides outstanding durability and comfort. All Edge jerseys feature reinforced seams and taped twill collar for durability. Optional front number and reinforced underarm stitching.

EDGE JERSEY V-NECK



SIZES : MEN XS - 5XL | WOMEN 5-12
PART #: RU-JS-105 / V-Neck
Collar RU-JS-106 / Tradition Collar
FABRIC: 260g interlock polyester
DESCRIPTION: Our Edge Jersey features a standard fit and is available in two collar choices - V Neck and Tradition. Manufactured using our heavyweight interlock the Edge jersey provides outstanding durability and comfort. All Edge jerseys feature reinforced seams and taped twill collar for durability. Optional front number and reinforced underarm stitching.

CUT FABRIC



INTERLOCK
POLYESTER-260 GSM

STANDART FIT

	10	12	14	16	XS	S	M	L	XL	2XL	3XL
FRONT LENGTH(HSP)	60	64	68	70	72	74	76	78	80	82	84
1/2 CHEST	42	44	46	49	52	55	57	60	62.5	65	67.5

unit: cm

PRO FIT

	7-8	9-10	11-12	2XS	XS	S	M	L	XL	2XL	3XL
CONTRE BACK(HSP)	55	57	59	65	67	69	71	73	76	78	80
1/2 CHEST	32	34.5	37	38.5	41	43.5	46	49	52	55	58

unit: cm

female fit

PART	YXS	YS	YM	YL	YXL	XS	S	M	L	XL	2XL
Centre back(hsp)	50	52	56	58	60	62	64	66	68	70	72
1/2CHEST	32	34	36	38	40	42.5	45	47.5	50	52.5	55

unit: cm

CUT FABRIC



INTERLOCK
POLYESTER-260 GSM

STANDART FIT

	10	12	14	16	XS	S	M	L	XL	2XL	3XL
FRONT LENGTH(HSP)	60	64	68	70	72	74	76	78	80	82	84
1/2 CHEST	42	44	46	49	52	55	57	60	62.5	65	67.5

unit: cm

PRO FIT

	7-8	9-10	11-12	2XS	XS	S	M	L	XL	2XL	3XL
CONTRE BACK(HSP)	55	57	59	65	67	69	71	73	76	78	80
1/2 CHEST	32	34.5	37	38.5	41	43.5	46	49	52	55	58

unit: cm

FEMALE FIT

PART	YXS	YS	YM	YL	YXL	XS	S	M	L	XL	2XL
1/2CHEST	50	52	56	58	60	62	64	66	68	70	72
FRONT LENGTH(HSP)	32	34	36	38	40	42.5	45	47.5	50	52.5	55

unit: cm

EDGE JERSEY CHAMPION



SIZES : MEN XS - 5XL | WOMEN 5-12
PART #: RU-JS-105 / V-Neck Collar RU-JS-106 / Tradition Collar
FABRIC: 260g interlock polyester
DESCRIPTION: Our Edge Jersey features a standard fit and is available in two collar choices - V Neck and Tradition. Manufactured using our heavyweight interlock the Edge jersey provides outstanding durability and comfort. All Edge jerseys feature reinforced seams and taped twill collar for durability. Optional front number and reinforced underarm stitching.

CUT
FABRIC

INTERLOCK
POLYESTER-260 GSM

STANDART FIT											
	10	12	14	16	XS	S	M	L	XL	2XL	3XL
FRONT LENGTH(HSP)	60	64	68	70	72	74	76	78	80	82	84
1/2 CHEST	42	44	46	49	52	55	57	60	62.5	65	67.5
PRO FIT											
	7-8	9-10	11-12	2XS	XS	S	M	L	XL	2XL	3XL
CONTR BACK(HSP)	55	57	59	65	67	69	71	73	76	78	80
1/2 CHEST	32	34.5	37	38.5	41	43.5	46	49	52	55	58
FEMALE FIT											
PART	YXS	YS	YM	YL	YXL	XS	S	M	L	XL	2XL
CONTR BACK(HSP)	50	52	56	58	60	62	64	66	68	70	72
1/2CHEST	32	34	36	38	40	42.5	45	47.5	50	52.5	55

unit: cm

ELITE SHORTS



SIZES : MEN S - 3XL | WOMEN 5-12
PART #: RU-SS-101
FABRIC: 220g woven + 260g spandex + 125g suede
DESCRIPTION: Our Elite short is simply one of the finest rugby shorts in the world today. Manufactured from a unique combination of durable twill, high stretch spandex and our exclusive sweat wiper suede. The Elite shorts offer a combination of the comfort and features a discerning rugby player could ever want.

CUT
FABRIC

INTERLOCK
POLYESTER
-260GSM

STANDARD FIT						
PART	XS	S	M	L	XL	2XL
HIP	52	54	56	58	60	62
LEG OPENNING	28	29	30	32	33	34
FRONT RAISE	29	30	31	32	33	34
WIDEST POINT AT LEG	34	35	36	37	38	39

unit: cm

UNION SHORTS



SIZES : MEN 2XS - 7XL | WOMEN 5-12
PART #: RU-SS-105
FABRIC: 220g woven
DESCRIPTION: Our Union Short is a traditional short with the addition of a flexible and comfortable spandex crotch. The spandex crotch significantly increase range of motion and comfort while maintaining a traditional union rugby look.

CUT
FABRIC


220G WOVEN

STANDARD FIT						
PART	XS	S	M	L	XL	2XL
HIP	52	54	56	58	60	62
LEG OPENNING	28	29	30	32	33	34
FRONT RAISE	29	30	31	32	33	34
WIDEST POINT AT LEG	34	35	36	37	38	39

RUGBY LEAGUE

EDGE JERSEY U - NECK



SIZES : MEN XS - 5XL | WOMEN 5-12

PART #: RU-JS-105 / V-Neck
Collar RU-JS-106 / Tradition Collar

FABRIC: 260g interlock polyester

DESCRIPTION: Our Edge Jersey features a standard fit and is available in two collar choices - V Neck and Tradition. Manufactured using our heavyweight interlock the Edge jersey provides outstanding durability and comfort. All Edge jerseys feature reinforced seams and taped twill collar for durability. Optional front number and reinforced underarm stitching.

EDGE JERSEY ROUND - NECK



SIZES : MEN XS - 5XL | WOMEN 5-12

PART #: RU-JS-105 / V-Neck
Collar RU-JS-106 / Tradition Collar

FABRIC: 260g interlock polyester

DESCRIPTION: Our Edge Jersey features a standard fit and is available in two collar choices - V Neck and Tradition. Manufactured using our heavyweight interlock the Edge jersey provides outstanding durability and comfort. All Edge jerseys feature reinforced seams and taped twill collar for durability. Optional front number and reinforced underarm stitching.

CUT FABRIC



INTERLOCK
POLYESTER
-260GSM

STANDARD FIT

PART	10	12	14	16	XS	S	M	L	XL	2XL
FRONT LENGTH	60	64	68	70	72	74	76	78	80	82
1/2CHEST	42	44	46	49	52	55	57.5	60	62.5	65

unit: cm

PRO FIT

PART	7-8	9-10	11-12	2XS	XS	S	M	L	XL	2XL
CENTRE BACK	55	57	59	65	67	69	71	73	76	78
1/2CHEST	32	34.5	37	38.5	41	43.5	46	49	52	55

unit: cm

FEMALE FIT

PART	YXS	YS	YM	YL	YXL	XS	S	M	L	XL
CENTRE BACK	50	52	56	58	60	62	64	66	68	70
1/2CHEST	32	34	36	38	40	42.5	45	47.5	50	52.5

unit: cm

CUT FABRIC



INTERLOCK
POLYESTER
-260GSM

STANDARD FIT

PART	10	12	14	16	XS	S	M	L	XL	2XL
FRONT LENGTH	60	64	68	70	72	74	76	78	80	82
1/2CHEST	42	44	46	49	52	55	57.5	60	62.5	65

unit: cm

PRO FIT

PART	7-8	9-10	11-12	2XS	XS	S	M	L	XL	2XL
CENTRE BACK	55	57	59	65	67	69	71	73	76	78
1/2CHEST	32	34.5	37	38.5	41	43.5	46	49	52	55

unit: cm

FEMALE FIT

PART	YXS	YS	YM	YL	YXL	XS	S	M	L	XL
CENTRE BACK	50	52	56	58	60	62	64	66	68	70
1/2CHEST	32	34	36	38	40	42.5	45	47.5	50	52.5

unit: cm

EDGE JERSEY NEW GRANDAD



SIZES : MEN XS - 5XL | WOMEN 5-12

PART #: RU-JS-105 / V-Neck Collar RU-JS-106 / Tradition Collar

FABRIC: 260g interlock polyester

NUMBERS:: Back sublimated number included

DESCRIPTION: Our Edge Jersey features a standard fit and is available in two collar choices - V Neck and Tradition. Manufactured using our heavyweight interlock the Edge jersey provides outstanding durability and comfort. All Edge jerseys feature reinforced seams and taped twill collar for durability. Optional front number and reinforced underarm stitching.

CUT
FABRIC

INTERLOCK
POLYESTER
-260GSM

unit: cm

STANDARD FIT

PART	10	12	14	16	XS	S	M	L	XL	2XL
FRONT LENGTH	60	64	68	70	72	74	76	78	80	82
1/2CHEST	42	44	46	49	52	55	57.5	60	62.5	65

PRO FIT

PART	7-8	9-10	11-12	2XS	XS	S	M	L	XL	2XL
CENTRE BACK	55	57	59	65	67	69	71	73	76	78
1/2CHEST	32	34.5	37	38.5	41	43.5	46	49	52	55

unit: cm

FEMALE FIT

PART	YXS	YS	YM	YL	YXL	XS	S	M	L	XL
CENTRE BACK	50	52	56	58	60	62	64	66	68	70
1/2CHEST	32	34	36	38	40	42.5	45	47.5	50	52.5

Rugby league shorts



SIZES : MEN S - 3XL | WOMEN 5-12

PART #: RU-SS-101

FABRIC: 220g woven + 260g spandex + 125g suede

DESCRIPTION: Our Elite short is simply one of the finest rugby shorts in the world today. Manufactured from a unique combination of durable twill, high stretch spandex and our exclusive sweat wiper suede. The Elite shorts offer a combination of the comfort and features a discerning rugby player could ever want.

CUT
FABRIC

220G WOVEN + 260G
SPANDEX
+ 125G SUEDE

unit: cm

STANDARD FIT

PART	XS	S	M	L	XL	2XL				
HIP	52	54	56	58	60	62				
LEG OPENNING	28	29	30	32	33	34				
FRONT RAISE	29	30	31	32	33	34				
WIDEST POINT AT LEG	34	35	36	37	38	39				

BASKETBALL

PUMP FAKE JERSEY



SIZES : MEN XS - 3XL | WOMEN XS-2XL | YOUTH XS-XL
PART #: BB-JS-111
FABRIC: 200g interlock + 180g 4way mesh
DESCRIPTION: Our Pump Fake Jersey is designed for the elite player and features 4-panel construction, V-neck and overlock stitching with double stitch hems. Constructed from stylish and durable interlock fabric on the front and highly comfortable and breathable 4-way stretch mesh on the back.

CUT FABRIC



INTERLOCK-200GSM

4WAY MESH-180 GSM

MAN MEASUREMENT

unit: cm

PART	YS	YM	YL	YXL	S	M	L	XL	2XL	3XL
1/2CHEST	40	43	46	49	49	52	55	58	61	64
FRONT LENGTH(HSP)	60	63	69	72	76	77	78	80	82	82

WOMEN'S MEASUREMENT

unit: cm

PART	YS	YM	YL	YXL	S	M	L	XL	2XL
1/2CHEST	38	40	42	44	47	50	53	56	59
FRONT LENGTH(HSP)	67	69	71	74	76	78	80	82	84

PROFILE



SIZES : MEN S - 3XL | YOUTH XS-XL
PART #: BB-JS-114 Profile
FABRIC: 180 4way mesh or similar
DESCRIPTION: Our Profile Jerseys put a premium on comfort and style. Both jerseys feature 2-panel construction from our 4-way stretch spandex mesh on front and back for unsurpassed breathability and comfort. The jerseys also feature sublimated ribbed openings for a stylish finish and great design options. In addition the feature overlock stitching and double stitched hems.

CUT FABRIC



180 4WAY MESH OR SIMILAR

MAN MEASUREMENT

unit: cm

PART	YS	YM	YL	YXL	S	M	L	XL	2XL	3XL
1/2CHEST	40	43	46	49	49	52	55	58	61	64
FRONT LENGTH(HSP)	60	63	69	72	76	77	78	80	82	82

WOMEN'S MEASUREMENT

unit: cm

PART	YS	YM	YL	YXL	S	M	L	XL	2XL
1/2CHEST	38	40	42	44	47	50	53	56	59
FRONT LENGTH(HSP)	67	69	71	74	76	78	80	82	84

LEAGUE



SIZES : MEN S - 3XL | YOUTH XS-XL
PART #: BB-JS-114 Profile
FABRIC: 180 4way mesh or similar
DESCRIPTION: Our Profile Jerseys put a premium on comfort and style. Both jerseys feature 2-panel construction from our 4-way stretch spandex mesh on front and back for unsurpassed breathability and comfort. The jerseys also feature sublimated ribbed openings for a stylish finish and great design options. In addition the feature overlock stitching and double stitched hems.

CUT FABRIC



INTERLOCK-200GSM

4WAY MESH -180 GSM

WOMEN'S MEASUREMENT

unit: cm

PART	YS	YM	YL	YXL	S	M	L	XL	2XL
1/2CHEST	38	40	42	44	47	50	53	56	59
FRONT LENGTH(HSP)	67	69	71	74	76	78	80	82	84

MAN'S MEASUREMENT

unit: cm

PART	YS	YM	YL	YXL	S	M	L	XL	2XL	3XL
1/2CHEST	40	43	46	49	49	52	55	58	61	64
FRONT LENGTH(HSP)	60	63	69	72	76	77	78	80	82	82

DOUBLE TAKE REVERSIBLE



SIZES : MEN XS - 3XL | WOMEN XS-2XL | YOUTH XS-XL
PART #: BB-JS-135
FABRIC: Lightweight 2-layer mesh
DESCRIPTION: Our Double Take Reversible Jersey is a traditional two-layer reversible jersey that offers outstanding durability, comfort, breathability and value. Features 2-panel construction, 2-sided sublimation, V-Neck collar, 1cm binding on neck and arm openings and overlock stitching. Constructed from durable and breathable lightweight mesh.

CUT FABRIC



LIGHTWEIGHT 2-LAYER MESH

MEN'S MEASUREMENT

unit: cm

PART	YS	YM	YL	YXL	S	M	L	XL	2XL	3XL
1/2CHEST	40	43	46	49	49	52	55	58	61	64
FRONT LENGTH(HSP)	60	63	69	72	76	77	78	80	82	82

WOMEN'S MEASUREMENT

unit: cm

PART	YS	YM	YL	YXL	S	M	L	XL	2XL
1/2CHEST	38	40	42	44	47	50	53	56	59
FRONT LENGTH(HSP)	67	69	71	74	76	78	80	82	84

LA SHOOTER SHORT SLEEVE



SIZES : MEN XS - 3XL WOMEN XS-2XL | YOUTH XS-XL
PART #: BB-ACS-120
FABRIC: 225g terry 100% polyester or similar
DESCRIPTION: Our LA Shooter Short Sleeve is a performance oriented 1/4 zip long sleeve shooting shirt designed for maximum comfort and mobility. Made from our interlock fabric it offers excellent drape and comfort.

CUT FABRIC



TERRY 100% POLYESTER OR SIMAR-225 GSM

WOMEN'S MEASUREMENT

unit: cm

PART	XS	S	M	L	XL	2XL			
FRONT LENGTH(HSP)	62	64	66	68	70	72			
1/2CHEST	42.5	45	47.5	50	52.5	55			

MAN'S MEASUREMENT

unit: cm

PART	YS	YM	YL	YXL	S	M	L	XL	2XL	3XL
FRONT LENGTH(HSP)	49.5	54	58.5	63.5	71	73.5	76	78.5	81	83.5
1/2CHEST	39.5	42	45.5	49.5	53.5	56	58.5	62	66	68.5

AURA



SIZES : MEN XS - 3XL | WOMEN XS-2XL | YOUTH XS-XL
PART #: BB-SS-112
FABRIC: 200g interlock + 180g 4way mesh or similar
DESCRIPTION: Our premium Aura Short features modern styling with forward slanted side inserts. This short is constructed from durable and comfortable interlock on front and back with a 4-way stretch mesh insert in the crotch for breathability. The Aura Short features 4 panel construction, drawstring waistband, reinforced stitching and optional anti-slip waistband.

CUT FABRIC



INTERLOCK-200GSM
 4WAY MESH OR
 SIMILAR -180 GSM

MEN'S MEASUREMENT

MEASUREMENT

PART	YS	YM	YL	YXL	S	M	L	XL	2XL	3XL
1/2HIP	46	48	50	52	58	61	64	67	70	73
OUTSEAM	46	48	50	51	56	57	58	59	60	61
INSEAM	16	17	18	18	25.4	25.4	25.4	25.4	25.4	25.4

WOMEN'S MEASUREMENT

MEASUREMENT

PART	YS	YM	YL	YXL	S	M	L	XL	2XL
1/2HIP	49	51	53	56	60	62	65	68	71
OUTSEAM	45	46.5	47.5	48.5	49.5	50.5	51.5	52.5	53.5
INSEAM	16	16.5	17	17.5	18.5	18.5	19	19	19

LA SHOOTER SHORT SLEEVE



SIZES : MEN XS - 3XL | WOMEN XS-2XL | YOUTH XS-XL

PART #: BB-ACS-122

FABRIC: 190g interlock 100% polyester or similar

DESCRIPTION: Our LA Shooter Short Sleeve is a performance oriented 1/4 zip short sleeve shooting shirt designed for maximum comfort and mobility. Made from our interlock fabric it offers excellent drape and comfort.

CUT FABRIC



190G INTERLOCK 100% POLYESTER OR SIMILAR

WOMEN'S MEASUREMENT

PART	XS	S	M	L	XL	2XL			
BACK CENTER	62	64	66	68	70	72			
1/2CHEST	42	45	47.5	50	52.5	55			

unit: cm

MAN'S MEASUREMENT

PART	YS	YM	YL	YXL	S	M	L	XL	2XL	3XL
FRONT LENGTH(HSP)	49.5	54	58.5	63.5	71	73.5	76	78.5	81	83.5
1/2CHEST	39.5	42	45.5	49.6	53.5	56	58.5	62	66	68.5

unit: cm

TRANSITION



SIZES : MEN XS - 3XL | WOMEN XS-2XL | YOUTH XS-XL

PART #: BB-SS-111

FABRIC: Interlock / 4-way stretch mesh (crotch area)

DESCRIPTION: Our Transition Short is a traditionally styled basketball short that still features premium fabrication and features. This short is constructed from durable and comfortable interlock on front and back with a 4-way stretch mesh insert in the crotch for breathability. The Transition Short features 4 panel construction, drawstring waistband, reinforced stitching and optional anti-slip waistband.

CUT FABRIC



INTERLOCK-200GSM

4WAY MESH OR SIMILAR -180 GSM

MEN'S MEASUREMENT

PART	YS	YM	YL	YXL	S	M	L	XL	2XL	3XL
1/2HIP	46	48	50	52	58	61	64	67	70	73
OUTSEAM	46	48	50	51	56	57	58	59	60	61
INSEAM	16	17	18	18	25.4	25.4	25.4	25.4	25.4	25.4

unit: cm

WOMEN'S MEASUREMENT

PART	YS	YM	YL	YXL	S	M	L	XL	2XL
1/2HIP	49	51	53	56	60	62	65	68	71
OUTSEAM	45	46.5	47.5	48.5	49.5	50.5	51.5	52.5	53.5
INSEAM	16	16.5	17	17.5	18.5	18.5	19	19	19

unit: cm

FADEAWAY



SIZES : MEN XS - 3XL | WOMEN XS-2XL | YOUTH XS-XL

PART #: BB-SS-110

FABRIC: Interlock / 4-way stretch mesh (crotch area)

DESCRIPTION: Our premium Fadeaway Short features modern styling with accent side inserts. This short is constructed from durable and comfortable interlock on front, back and sides with a 4-way stretch mesh insert in the crotch for breathability. The Fadeaway Short features 5 panel construction, drawstring waistband, reinforced stitching and optional anti-slip waistband.

CUT FABRIC



INTERLOCK / 4-WAY STRETCH MESH (CROTCH AREA)

MEN'S MEASUREMENT

PART	YS	YM	YL	YXL	S	M	L	XL	2XL	3XL
1/2HIP	46	48	50	52	58	61	64	67	70	73
OUTSEAM	46	48	50	51	56	57	58	59	60	61
INSEAM	16	17	18	18	25.4	25.4	25.4	25.4	25.4	25.4

MEASUREMENT

WOMEN'S MEASUREMENT

PART	YS	YM	YL	YXL	S	M	L	XL	2XL
1/2HIP	49	51	53	56	60	62	65	68	71
OUTSEAM	45	46.5	47.5	48.5	49.5	50.5	51.5	52.5	53.5
INSEAM	16	16.5	17	17.5	18.5	18.5	19	19	19

MEASUREMENT

DOUBLE TAKE REVERSIBLE



SIZES : MEN XS - 3XL | WOMEN XS-2XL | YOUTH XS-XL

PART #: BB-JS-135

FABRIC: Lightweight 2-layer mesh

DESCRIPTION: Our Double Take Reversible Jersey is a traditional two-layer reversible jersey that offers outstanding durability, comfort, breathability and value. Features 2-panel construction, 2-sided sublimation, V-Neck collar, 1cm binding on neck and arm openings and overlock stitching. Constructed from durable and breathable lightweight mesh.

CUT FABRIC



RIB POLYESTER-100GSM

2 WAY MESH -140GSM

PART	YS	YM	YL	YXL	S	M	L	XL	2XL	3XL
1/2CHEST	40	43	46	49	49	52	55	58	61	64
FRONT LENGTH(HSP)	60	63	69	72	76	77	78	80	82	82

WOMEN'S MEASUREMENT

PART	YS	YM	YL	YXL	S	M	L	XL	2XL
1/2CHEST	38	40	42	44	47	50	53	56	59
FRONT LENGTH(HSP)	67	69	71	74	76	78	80	82	84

MAN'S MEASUREMENT

SOCCER

EURO JERSEY



SIZES : MEN XS - 2XL | WOMEN S-2XL | YOUTH XS-X
PART #: SO-JS-101
FABRIC: 145g interlock + 180g 4way mesh
DESCRIPTION: Our premium Euro Jersey features 10 panel construction, 4 way stretch mesh inserts for ventilation, interlock body panels, a european inspired snap button placket and overlock stitching throughout.

VARIANT JERSEY



SIZES : MEN XS - 2XL | WOMEN S-2XL | YOUTH XS-XL
PART #: SO-JS-105
FABRIC: 145g interlock + 180g 4way mesh
DESCRIPTION: Our Variant Jersey features 6-panel construction, 4-way stretch mesh inserts for ventilation, interlock body panels, V-neck collar and overlock stitching.

CUT FABRIC



INTERLOCK-145GSM

4WAY MESH-180 GSM

MAN MEASUREMENT	unit: cm										
PART	YXS	YS	YM	YL	YXL	S	M	L	XL	2XL	3XL
1/2CHEST	37	39	42	45	49.5	53	56	58	62	86	68
FRONT LENGTH(HSP)	46	49	54	58	63	71	73	76	78	81	83.5

WOMEN'S MEASUREMENT	unit: cm					
PART	XS	S	M	L	XL	2XL
1/2CHEST	42.5	45	47	50	52	55
BACK LENGTH(HSP)	62	64	66	68	70	72

CUT FABRIC



INTERLOCK-145GSM

4WAY MESH-180 GSM

MAN MEASUREMENT	unit: cm										
PART	YXS	YS	YM	YL	YXL	S	M	L	XL	2XL	3XL
1/2CHEST	37	39	42	45	49.5	53	56	58	62	86	68
FRONT LENGTH(HSP)	46	49	54	58	63	71	73	76	78	81	83.5

WOMEN'S MEASUREMENT	unit: cm					
PART	XS	S	M	L	XL	2XL
1/2CHEST	42.5	45	47	50	52	55
BACK LENGTH(HSP)	62	64	66	68	70	72

UNIVERSAL JERSEY



SIZES : MEN S-2XL | WOMEN S-2XL | YOUTH XS-XL
PART #: SO-JS-103
FABRIC: 145g interlock + 180g 4way mesh
DESCRIPTION: Our Universal Jersey features 6-panel construction, 4-way stretch mesh inserts for ventilation, interlock body panels, round neck collar and overlock stitching.

CUT FABRIC



INTERLOCK-145GSM

4WAY MESH-I80 GSM

MAN MEASUREMENT		unit: cm										
PART	YXS	YS	YM	YL	YXL	S	M	L	XL	2XL	3XL	
1/2CHEST	37	39	42	45	49.5	53	56	58	62	86	68	
FRONT LENGTH(HSP)	46	49	54	58	63	71	73	76	78	81	83.5	

WOMEN'S MEASUREMENT		unit: cm					
PART	XS	S	M	L	XL	2XL	
1/2CHEST	42.5	45	47	50	52	55	
BACK LENGTH(HSP)	62	64	66	68	70	72	

UNIVERSAL SHORTS



SIZES : MEN XS - 2XL | WOMEN S-2XL | YOUTH XS-XL
PART #: SO-SS-113
FABRIC: 145g interlock + 180g 4way mesh
DESCRIPTION: Our Universal Shorts feature 4-panel construction, drawstring elasticized waist, vented crotch, interlock body panels and overlock stitching throughout.

CUT FABRIC



PINHOLE-180 GSM

MAN MEASUREMENT		unit: cm										
PART	YXS	YS	YM	YL	YXL	S	M	L	XL	2XL	3XL	
1/2HIP	39.5	42	44.5	48.5	52	56	58.5	61	65	68	72	
OUTSEM	30	33	35	38	41	47	48	49	51	52	54	

WOMEN'S MEASUREMENT		unit: cm				
PART	S	M	L	XL	2XL	
1/2HIP	56	58	61	64.5	68.5	
OUTSEM	44	45	46.5	48	50	

EURO SHORTS



SIZES : MEN XS - 2XL | WOMEN S-2XL | YOUTH XS-XL
PART #: SO-SS-111
FABRIC: 145g interlock + 180g 4way mesh
DESCRIPTION: Our premium Euro Shorts feature 5-panel construction, drawstring elasticized waist, 4-way stretch mesh ventilation inserts in side and crotch, interlock body panels and overlock stitching throughout.

CUT FABRIC



INTERLOCK-145GSM

4WAY MESH-I80 GSM

MAN MEASUREMENT		unit: cm										
PART	YXS	YS	YM	YL	YXL	S	M	L	XL	2XL	3XL	
1/2HIP	39.5	42	44.5	48.5	52	56	58.5	61	65	68	72	
OUTSEM	30	33	35	38	41	47	48	49	51	52	54	

WOMEN'S MEASUREMENT		unit: cm				
PART	S	M	L	XL	2XL	
1/2HIP	56	58	61	64.5	68.5	
OUTSEM	44	45	46.5	48	50	

ICE HOCKEY

ENFORCER JERSEY



SIZES : MEN S-3XL | YOUTH

XS-XL

PART #: HK-JS-101

FABRIC: 200g hockey mesh

DESCRIPTION: The Enforcer is a classic 4-panel hockey jersey with V-Neck collar and insert. Double shoulders and elbows as well as reinforced double stitching throughout. Optional lace collar and fight strip.

REVOLUTION JERSEY



SIZES : Mens XS-2XL / Boys

XS-XL / Goalie Youth-Intermediate-Adult

PART #: HK-JS-106

FABRIC: 200g hockey mesh

DESCRIPTION: The Revolution Jersey is our newest hockey jersey and features our exclusive new Elite Collar. The elite collar is more durable than traditional hockey collars and far less susceptible to picking and abrasion due to its lay flat design. Multi-panel design and Classic yoke styling is perfect for names and league identification. Optional fight strip.

CUT FABRIC



HOCKEY MESH -200GSM

MEN'S MEASUREMENT

unit: cm

PART	YXS	YS	YM	YL	YXL	AS	AM	AL	AXL	A2XL
1/2CHEST	44.5	47.9	51.4	54	56.5	63.5	66	68.6	72.7	76.8
LENGTH	59	62.9	67.3	71	75	77	80	82	85	87

CUT FABRIC



HOCKEY MESH -200GSM

MEN'S MEASUREMENT

unit: cm

PART	YXS	YS	YM	YL	YXL	AS	AM	AL	AXL	A2XL
1/2CHEST	44.5	47.9	51.4	54	56.5	63.5	66	68.6	72.7	76.8
LENGTH	59	62.9	67.3	71	75	77	80	82	85	87

**DOUBLE OVERTIME
REVERSIBLE HOCKEY JERSEY**


SIZES : Mens XS-2XL / Boys XS-XL / Goalie Youth-Intermediate-Adult
PART #: HK-JS-115
FABRIC: 200g hockey mesh
DESCRIPTION: Our new Double Overtime Reversible Hockey Jersey features the same great fit and styling as our standard hockey jerseys in a new 2-layer reversible design with v-neck. It is constructed of high strength 2-way mesh front and back for outstanding durability and breathability. All seams are triple stitched and feature reinforced taping in key areas.

**CUT
FABRIC**


HOCKEY MESH -200GSM

MEN'S MEASUREMENT

unit: cm

PART	YXS	YS	YM	YL	YXL	AS	AM	AL	AXL	A2XL
1/2CHEST	44.5	47.9	51.4	54	56.5	63.5	66	68.6	72.7	76.8
LENGTH	59	62.9	67.3	71	75	77	80	82	85	87

Hockey hoodie


DESCRIPTION: Our new hockey Hoodie features "hockey jersey" styling with the addition of a lace neck and yoke shoulder styling. The Hoodie also has a large center pocket and self fabric cuffs. The Hoodie is manufactured from our DNA 4-way stretch fabric which offers outstanding comfort, durability and range of motion. Optional Polar Fleece liner for 4-season comfort.

**CUT
FABRIC**

FLEECE-SELF
FABRIC CUFF-225GSM

MEN'S MEASUREMENT

unit: cm

PART	YS	YM	YL	YXL	S	M	L	XL	2XL	3XL
1/2CHEST	52	56	60	64	67	69	71	73	75	77
BACK LENGTH(HSP)	44	46	48	50	52	56	60	65	70	75

PRO STYLE SOCKS

SIZES : S,M,L,XL

PART #: HK-SS-100

FABRIC: 200g hockey mesh

DESCRIPTION: Pro Style socks feature double layer reinforced knee, velcro strips and double stitching throughout.

**CUT
FABRIC**

HOCKEY MESH-200
GSM

MAN MEASUREMENT

unit: cm

PART	YX - M	YL - XL	AS - M	AL - XL	AXXL
FRONT LENGTH	29.5	30.5	32	33	34

FIELD HOCKEY

BLADE JERSEY



SIZES : MEN XS - 3XL | YOUTH XS-XL

PART #: FH-JS-110

FABRIC: 145g interlock + 180g 4way mesh

DESCRIPTION: Our Blade Mens Field Hockey Jersey features a combination of comfortable and stylish interlock fabric coupled with high breathable 4 way stretch mesh inserts.

CUT FABRIC



INTERLOCK-145 GSM

4WAY MESH-180 GSM

MAN'S MEASUREMENT

unit: cm

PART	YS	YM	YL	YXL	S	M	L	XL	2XL	3XL
1/2CHEST	39.5	42	45.5	49.5	53.5	56	58.5	62	66	68.5
LENGTH	53	56.5	61.5	66.5	75	77.5	80	83	85	87.5

ADVANTAGE SHORT SLEEVE



SIZES : WOMEN XS-2XL | YOUTH XS-XL

PART #: FH-JS-103

FABRIC: 210g spandex poly + 180g 4way mesh

DESCRIPTION: Our womens Advantage Field Hockey short sleeve jersey is both stylish and extremely comfortable. The jersey features V-neck collar, 4-panel construction, overlock stitching and reinforced seams. Fabricated from a combination of a solid compression spandex front with a 4-way stretch back this jersey is offers unsurpassed comfort, range of motion and breathability.

CUT FABRIC



SPENDEX POLY-210 GSM

4WAY MESH-180 GSM

MAN MEASUREMENT

unit: cm

PART	YS	YM	YL	YXL	XS	S	M	L	XL	2XL
1/2CHEST	31	33	35	37	39	41	43	45	47	49
LENGTH	52	56	60	62	64	66	68	70	72	74

ADVANTAGE SLEEVELESS



SIZES : WOMEN XS-2XL | YOUTH XS-XL
PART #: FH-JS-101
FABRIC: 210g spandex poly + 180g 4way mesh
DESCRIPTION: Our womens Advantage Field Hockey sleeveless jersey is both stylish and extremely comfortable. The jersey features V-neck collar, 2-panel construction, racer back design, trim binding on sleeve openings, overlock stitching and reinforced seams. Fabricated from a combination of a solid compression spandex front with a 4-way stretch back this jersey is offers unsurpassed comfort, range of motion and breathability.

CUT FABRIC



SPANDEX POLY
-210GSM

4WAYMESH
-180GSM

MEN'S MEASUREMENT		MEASWEMENT										unit: cm
PART	YS	YM	YL	YXL	XS	S	M	L	XL	2XL		
1/2CHEST	31	33	35	37	39	41	43	45	47	49		
LENGTH	52	56	60	62	64	66	68	70	72	74		

BLADE SHORT



SIZES : MEN XS - 3XL | YOUTH XS-XL
PART #: FH-SS-107
FABRIC: 145g interlock 100% polyester or similar
DESCRIPTION: Our Blade Mens Short features a combination of comfortable and stylish interlock fabric coupled with high breaaathable 4 way stretch mesh crotch insert. Draw-string closure.

CUT FABRIC



INTERLOCK100%
POLYESTER OR
SIMILAR-145GSM

SIZE	YOUTH AND MENS										unit: cm
PART	YS	YM	YL	YXL	XS	S	M	L	XL	2XL	
1/2HIP	42	44.5	48.5	52	56	58.2	61	65	68	72	
OUTSEAM	14	15	16.5	18	20.5	20.5	20.5	20.5	20.5	20.5	

ADVANTAGE SKIRT/SKORT



SIZES : WOMEN XS-2XL | YOUTH XS-XL
PART #: FH-SS-101(Skirt) / FH-SS-104 (Skort)
FABRIC: 210g spandex poly
DESCRIPTION: Traditional Womens Field Hockey Skirt fabricat-ed from compression spandex for excellent comfort and range of motion. The Skort adds a fully integrated and sublimated compres-sion short.

CUT FABRIC



SPANDEXPOLY-210GSM

WOMEN' s MEASWEMENT		unit: cm									
PART	YS	YM	YL	YXL	XS	S	M	L	XL	2XL	3XL
1/2 WALST	27	29	31	33	35	36.5	38	41	44	47	49
SIDE SEAM	28.5	29.5	30.5	31.5	32.5	33.5	34.5	35.5	36.5	37.5	38.5

LACROSSE

VAPOR ELITE JERSEY



SIZES : MEN S - 3XL | YOUTH XS-XL
PART #: LX-JS-101
FABRIC: 200g hockey mesh + 280g 4way mesh
DESCRIPTION: The Vapor Elite is our premium 6-panel design lacrosse jersey. The Vapor Elite Jersey is constructed from a combination of heavyweight micro mesh and 4-way stretch mesh underarm inserts. The jersey features a premium badge style collar, reinforced seams, overlock stitching, strategic ventilation and a generous fit.

CUT FABRIC


HOCKEYMESH
-200GSM

4WAY MESH-280 GSM

MAN MEASUREMENT

unit: cm

PART	YS	YM	YL	YXL	S	M	L	XL	2XL	3XL
1/2CHEST	48	50	52	54	56	59	64.5	67.5	71	74
FRONT LENGTH(HSP)	59	61	63	65	66	68	73.6	73.6	78.7	82.7

VAPOR JERSEY



SIZES : MEN S - 3XL | YOUTH XS-XL
PART #: LX-JS-103
FABRIC: 200g hockey mesh
DESCRIPTION: Our Vapor Lacrosse Jersey is a traditional 4-panel design. The Vapor Jersey is constructed from heavyweight micro mesh and features a stylish v-neck collar, reinforced seams, overlock stitching and a generous fit.

CUT FABRIC


HOCKEY MESH
-280GSM

MAN MEASUREMENT

unit: cm

PART	YS	YM	YL	YXL	S	M	L	XL	2XL	3XL
1/2CHEST	48	50	52	54	56	59	64.5	67.5	71	74
FRONT LENGTH(HSP)	59	61	63	65	66	68	73.6	73.6	78.7	82.7

VAPOR JERSEY



SIZES : MEN S - 3XL | YOUTH XS-XL
PART #: LX-JS-103
FABRIC: 200g hockey mesh
DESCRIPTION: Our Vapor Lacrosse Jersey is a traditional 4-panel design. The Vapor Jersey is constructed from heavyweight micro mesh and features a stylish v-neck collar, reinforced seams, overlock stitching and a generous fit.

CUT
FABRIC


200G HOCKEY MESH

MAN	MEASUREMENT	unit: cm									
PART	YS	YM	YL	YXL	S	M	L	XL	2XL	3XL	
1/2CHEST	48	50	52	54	56	59	64.5	67.5	71	74	
FRONT LENGTH(HSP)	59	61	63	65	66	68	73.6	73.6	78.7	82.7	

MAGNUM SHOOTER



SIZES : MEN S - 3XL | YOUTH XS-XL
PART #: LX-JS-105
FABRIC: 145g interlock polyester + 180g 4way mesh
DESCRIPTION: Our Magnum Lacrosse Shooter is a stylish, highly breathable shooter design. Features lightweight yet durable interlock front construction with a 4-way stretch mesh back for comfort and ventilation.

CUT
FABRIC

145G INTERLOCK
POLYESTER +
180G 4WAY MESH

MAN	MEASUREMENT	unit: cm									
PART	YS	YM	YL	YXL	S	M	L	XL	2XL	3XL	
1/2CHEST	39	42	45.5	49.5	53.5	56	58.5	62	86	86.5	
FRONT LENGTH(HSP)	49	54	58.5	63.5	71	73.5	76	78.5	81	83.5	

ZONE REVERSIBLE VEST



SIZES : MEN S - 3XL | YOUTH XS-XL
PART #: LX-JS-135
FABRIC: 280g spandex
DESCRIPTION: Our Zone Reversible Vest is a modern single layer reversible jersey that offers outstanding durability, comfort, range of motion and value. Features 2-panel construction, 2-sided sublimation and accent binding on all openings. Constructed from durable 4-way stretch heavyweight spandex.

CUT
FABRIC


SPANDEX-280GSM

MAN	MEASUREMENT	unit: cm									
PART	YS	YM	YL	S	M	L	XL	2XL			
1/2 CHEST	43	46	50	52	56	61	65	70			
LENGTH	59	61	63	66	68	73.6	73.6	78.7			

DOUBLE DOWN
REVERSIBLE VEST


SIZES : MEN S - 3XL | YOUTH XS-XL
PART #: LX-JS-140
FABRIC: 140g 2way mesh
DESCRIPTION: Our Double Down Reversible Vest is a traditional 2-ply reversible jersey that offers outstanding durability, comfort and value. Features 2-panel, 2-ply construction and reinforced overlock stitching.

CUT
FABRIC


140G 2WAY MESH

MAN	MEASUREMENT	unit: cm									
PART	YS	YM	YL	S	M	L	XL	2XL			
1/2 CHEST	43	46	50	52	56	61	65	70			
LENGTH	59	61	63	66	68	73.6	73.6	78.7			

VAPOR ELITE SHORTS



SIZES : MEN S - 3XL | YOUTH XS-XL
PART #: LX-SS-106
FABRIC: 200g hockey mesh + 180g 4way mesh
DESCRIPTION: The Vapor Elite Short is our premium 6-panel design lacrosse short. This short is constructed from our heavyweight micro mesh with a comfortable and breathable 4-way mesh crotch insert. The Vapor Elite short features pockets, flat lock stitching and reinforced seams.

CUT FABRIC



HOCKEY MESH-200 GSM

4WAY MESH -180 GSM

MEN'S MEASUREMENT					MEASUREMENT						unit: cm
PART	YS	YM	YL	YXL	S	M	L	XL	2XL	3XL	
1/2HIP	44	47	50	53	56	59	62	65	68	70	
OUTSEAM	44	46	48	50	52	54	55	57	58	59	
INSEAM	19	20	22	22	23	24	25	25	25	25	

VAPOR SHORTS



SIZES : MEN S - 3XL | YOUTH XS-XL
PART #: LX-SS-102
FABRIC: 200g hockey mesh + 180g 4way mesh
DESCRIPTION: Our Vapor Short is a traditional 4-panel design that features side pockets and comfortable flat lock stitching. Constructed from a combination of a heavyweight micro mesh with a 4-way stretch mesh crotch insert. Exceptionally comfortable with excellent ventilation.

CUT FABRIC



HOCKEY MESH-200 GSM

4WAY MESH -180 GSM

MEN'S MEASUREMENT					MEASUREMENT						unit: cm
PART	YS	YM	YL	YXL	S	M	L	XL	2XL	3XL	
1/2HIP	44	47	50	53	56	59	62	65	68	70	
OUTSEAM	44	46	48	50	52	54	55	57	58	59	
INSEAM	19	20	22	22	23	24	25	25	25	25	

NETBALL

PRIVOT A-LINE NETBALL DRESS



SIZES : WOMEN XS-6XL | GIRL 4-14
PART #: NB-ALND-112
FABRIC: 200g birdseye mesh
DESCRIPTION: Our pivot netball dress is ideal for the serious netballer at any level. It Features a classy and comfortable 200g birdseye mesh construction and pre-fitted Velcro tabs on front and back. This dress is stylish, durable and fits great.

CUT FABRIC



SPANDEX-250GSM

BIRDEYE MESH-200 GSM

WOMEN'S MEASUREMENT										unit: cm
PART	4	6	8	10	12	14	XS	S	M	
1/2CHEST	23	25.5	30	34	35.5	38	40	43.5	45	
FRONT LENGTH(HSP)	60	63	66	70	74	78	82	86	87	

WOMEN'S MEASUREMENT										unit: cm
PART	L	XL	2XL	3XL	4XL	5XL	6XL	7XL		
1/2CHEST	48	49.5	52	55	57	61	63	66		
FRONT LENGTH(HSP)	90	93	95	97	100	102	104	106		

REBOUND A-LINE NETBALL DRESS



SIZES : WOMEN XS-6XL | GIRL 4-14
PART #: NB-ALND-111
FABRIC: 250g spandex + 200g birdseye mesh
DESCRIPTION: For those who really want it all. Designed for elite level netball this dress is constructed from 200g birdseye mesh with 250g spandex panels in all the right places. The end result is great airflow, added strength and durability. All in a dress that looks amazing and will flex in all the right places when required.

CUT FABRIC



BIRDEYE MESH-200 GSM

WOMEN'S MEASUREMENT										unit: cm
PART	4	6	8	10	12	14	XS	S	M	
1/2CHEST	23	25.5	30	34	35.5	38	40	43.5	45	
FRONT LENGTH(HSP)	60	63	66	70	74	78	82	86	87	

WOMEN'S MEASUREMENT										unit: cm
PART	L	XL	2XL	3XL	4XL	5XL	6XL	7XL		
1/2CHEST	48	49.5	52	55	57	61	63	66		
FRONT LENGTH(HSP)	90	93	95	97	100	102	104	106		

AIRBORNE NETBALL TOP



SIZES : WOMEN XS-6X
PART #: NB-ALND-121
FABRIC: 250g spandex
DESCRIPTION: Simple, comfortable and stylish. This netball top contains just the right amount of spandex to make it easy to get on and off, fit great and be super-durable. Add a modern lapel collar and velcro tabs and you have the perfect netball top for today's netballer.

CUT FABRIC



SPANDEX-250 GSM

MEN'S MEASUREMENT		MEASUREMENT										unit: cm	
PART		XS	S	M	L	XL	2XL	3XL	4XL	5XL	6XL		
1/2WAIST		37	39	40	41	42	44	46	48	50	52		
1/2CHEST		41	43	44	45	46	48	50	52	54	56		
LENGTH		55	57	58	60	61	62	63	65	67	69		

LUNGE NETBALL SKORTS



SIZES : WOMEN XS-6XL | GIRL 4-14
PART #: NB-ALND-131
FABRIC: 250g spandex
DESCRIPTION: Our lunge netball shorts are the perfect addition to your netball club uniform. Constructed from spandex these shorts will twist and bend with you while providing warmth and comfort.

CUT FABRIC



SPANDEX-250 GSM

WOMEN'S MEASUREMENT										unit: cm	
PART		4	6	8	10	12	14	XS	S		
1/2 pant open width		17.5	18.5	19.5	20.5	21.5	22.5	23.5	24.5		
out seam		17.5	18.5	19.5	21.5	22	24	25	26		
1/2 waist		23	25	27	29	31	33	35	37.		
PART		M	L	XL	2XL	3XL	4XL	5XL	6XL		
1/2 pant open width		25.5	26.5	27.5	28.5	29.5	30.5	31.5	32.5		
out seam		27.5	28.5	30.5	31.5	33	34	35	36		
1/2 waist		38	39	40	41	42	44	46	48.		

DODGE NETBALL SKORTS



SIZES : WOMEN XS-6XL
PART #: NB-ALND-122
FABRIC: 250g spandex
DESCRIPTION: Everything the modern high-level netballer wants in a netball skirts. Our Dodge skirt features built in high-waisted spandex shorts and a sturdy and durable construction. The skirt looks and fits amazing.

CUT FABRIC



SPANDEX-250 GSM

WOMEN'S MEASUREMENT												unit: cm	
PART		XS	S	M	L	XL	2XL	3XL	4XL	5XL	6XL		
1/2WAIST		35	37	38	39	40	41	42	44	46	48		
1/2CHEST		25	26	27.5	28.5	30.5	31.5	33	34	35	36		
LENGTH		39	40	41	42	43	44	45	46.	47	48		

VOLLEYBALL

SPIKE SHORT SLEEVE JERSEY - MEN



SIZES : MEN S-3XL | YOUTH

XS-XL

PART #: VB-JS-110

FABRIC: 160g mini waffle polyester + 180g 4way mesh

DESCRIPTION: Our Spike Mens Short Sleeve Volleyball Jersey offers superb performance and great styling. High tech mini waffle fabric front and back and 4-way stretch mesh on sides offer an unbeatable combination of mobility, ventilation and durability.

CUT FABRIC



MINI WAFFLE
POLYESTER-210 GSM

4WAY MESH-180 GSM

MEN MEASUREMENT

unit: cm

PART	YXS	YS	YM	YL	YXL	S	M	L	XL	2XL
1/2CHEST	36.8	39.7	42	45.8	49.6	53.4	56	58.5	62.3	66.1
FRONT LENGTH(HSP)	46	49.6	54	58.5	63.5	71.2	73.7	76.2	78.8	81.3

DINGER JERSEY SERIES



SIZES : MEN S-3XL | YOUTH

XS-XL

PART #: VB-JS-111

FABRIC: 160g mini waffle polyester + 180g 4way mesh

DESCRIPTION: Our Spike Mens Sleeveless Volleyball Jersey offers superb performance and great styling. High tech mini waffle fabric front and back and 4-way stretch mesh on sides offer an unbeatable combination of mobility, ventilation and durability.

CUT FABRIC



MINI WAFFLE
POLYESTER-160 GSM

4WAY MESH-180 GSM

MEN MEASUREMENT

unit: cm

PART	YXS	YS	YM	YL	YXL	S	M	L	XL	2XL
1/2CHEST	36.8	39.4	42	45.8	49.6	53.4	56	58.5	62.3	66.1
FRONT LENGTH(HSP)	46	49.6	54	58.5	63.5	71.2	73.7	76.2	78.8	81.3

ATTACK CAP SLEEVE - WOMEN



SIZES : WOMEN S-2XL | YOUTH XS-XL
PART #: VB-JS-130
FABRIC: 210g spandex poly + 180g 4way mesh
DESCRIPTION: Our Attack Line of Womens Volleyball Jerseys combine the latest in high performance fabrics with great style. The Attack Cap Sleeve Jersey is constructed of compression spandex mesh on the front and sleeves and our 4-way stretch mesh on the back. This combination offers unsurpassed range of motion, durability and ventilation.

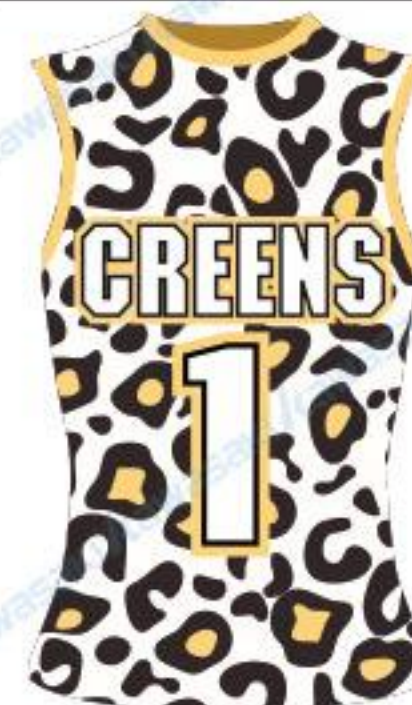
CUT FABRIC



INTERLOCKSPANDEX
-210GSM
 4WAYMESH-180GSM

MEN MEASUREMENT unit: cm										
PART	YS	YM	YL	YXL	XS	S	M	L	XL	2XL
1/2CHEST	31	33	35	37	39	41	43	45	47	49
LENGTH(HSP)	52	56	60	62	64	66	68	70	72	74

ATTACK SLEEVELESS - WOMEN



SIZES : WOMEN S-2XL | YOUTH XS-XL
PART #: SO-JS-101
FABRIC: 210g spandex poly + 180g 4way mesh
DESCRIPTION: Our Attack Line of Womens Volleyball Jerseys combine the latest in high performance fabrics with great style. The Attack Sleeveless Jersey is constructed of spandex mesh on the front and our 4-way stretch mesh on the back. This combination offers unsurpassed range of motion, durability and ventilation.

CUT FABRIC



SPANDEX-210GSM
 4WAYMESH-180GSM

MEN MEASUREMENT unit: cm										
PART	YS	YM	YL	YXL	XS	S	M	L	XL	2XL
1/2CHEST	31	33	35	37	39	41	43	45	47	49
LENGTH(HSP)	52	56	60	62	64	66	68	70	72	74

ATTACK LONG SLEEVE - WOMEN



SIZES : WOMEN S-4XL | YOUTH XS-XL
PART #: VB-JS-132
FABRIC: Compression Spandex (white) / 4-Way Stretch Mesh (yellow)
DESCRIPTION: Our Attack Line of Womens Volleyball Jerseys combine the latest in high performance fabrics with great style. The Attack Long Sleeve Jersey is constructed of compression spandex mesh on the front and sleeves and our 4-way stretch mesh on the back. This combination offers unsurpassed range of motion, durability and ventilation.

CUT FABRIC



SPANDEX POLY-210GSM
 4WAYMESH-180GSM

MEN MEASUREMENT unit: cm										
PART	YS	YM	YL	YXL	XS	S	M	L	XL	2XL
1/2CHEST	31	33	35	37	39	41	43	45	47	49
LENGTH(HSP)	52	56	60	62	64	66	68	70	72	74

SENTINEL CAP REVERSIBLE - WOMEN



SIZES : WOMEN S-2XL | YOUTH XS-XL
PART #: VB-JS-140
FABRIC: 280g spandex poly
DESCRIPTION: Our Sentinel Cap Sleeve Reversible Jersey is a modern single layer reversible jersey that offers outstanding durability, comfort, range of motion and value. Features 2-panel construction, 2-sided sublimation, Round collar and trim binding on all openings. Constructed from durable and comfortable heavyweight spandex.

CUT FABRIC



SPANDEX POLY
-280GSM

WOMEN MEASUREMENT unit: cm										
PART	YS	YM	YL	YXL	XS	S	M	L	XL	2XL
1/2CHEST	31	33	35	37	39	41	43	45	47	49
LENGTH(HSP)	52	56	60	62	64	66	68	70	72	74

SPIKE SHORTS - MEN



SIZES : MEN S-3XL | YOUTH XS-XL
PART #: VB-SS-120
FABRIC: 145g interlock + 180g 4way mesh
DESCRIPTION: Our Spike Mens Volleyball Shorts offer great fit, comfort and styling. Comfortable and stylsih interlock fabric with a 4-way stretch mesh crotch insert offer an unbeatable combi- nation of mobility, ventilation and durability.

CUT
FABRIC


INTERLOCK-145GSM
 4WAYMESH-180GSM

MEN MEASWEMENT											unit: cm	
PART	YS	YM	YL	YXL	XS	S	M	L	XL	2XL		
1/2HIP	39.5	42	44.5	48.5	52	56	58.5	61	65	68		
OUTXEAM	30	33	35	38	41	47	48	49	51	54		

DIG SHORTS - WOMEN



SIZES : MEN S-3XL | YOUTH XS-XL
PART #: VB-SS-130
FABRIC: 210g spandex poly
DESCRIPTION: Our Dig Shorts are a compression fit short that features our moisture wicking spandex fabric that is comfortable and offers complete range of motion. Our Dig Short also features a stretch waist for snug and secure fit,

CUT
FABRIC


SPANDEX POLY
 -210GSM

MEN MEASWEMENT											unit: cm	
PART	XS	S	M	L	XL	2XL						
1/2CHEST	35	37	39	41	43	45						
OUTSEAM	28	29	30	34	36	38						

COMPRESSION

MENS - TIGHT SLEEVELESS



SIZES : MEN S-3XL | YOUTH XS-XL

PART #: AW-CMPS-115

FABRIC: 220g spandex 12% polyester 88%

DESCRIPTION: Our Tight Sleeveless is a modern 4-panel compression design with spandex mesh side inserts for increased breathability. All Tight compression garments feature accent flat lock stitching and reinforced seams. Compression garments are proven to increase circulation, performance and recovery in elite athletes. Our durable compression spandex fabric provides incredible range of motion, superb comfort and excellent moisture management.

CUT FABRIC



SPANDEX12%-220GSM

POLYESTER88%-220GSM

MEN'S MEASUREMENT

unit: cm

PART	YS	YM	YL	YXL	S	M	L	XL	2XL	3XL
1/2CHEST	29	33	36	38	43	46	49	53	54	59
FRONT LENGTH(HSP)	50	54	56	58	62	64	66	68	71	72

MENS - TIGHT SHORT SLEEVE



SIZES : MEN S-3XL | YOUTH XS-XL

PART #: AW-CMPS-116

FABRIC: 220g spandex 12% polyester 88%

DESCRIPTION: Our Tight Short Sleeve is a modern 6-panel compression design with spandex mesh side inserts for increased breathability. All Tight compression garments feature accent flat lock stitching and reinforced seams. Compression garments are proven to increase circulation, performance and recovery in elite athletes. Our durable compression spandex fabric provides incredible range of motion, superb comfort and excellent moisture management.

CUT FABRIC



SPANDEX12%-220GSM

POLYESTER88%-220GSM

MEN'S MEASUREMENT

unit: cm

PART	YS	YM	YL	YXL	S	M	L	XL	2XL	3XL
1/2CHEST	29	33	36	38	43	46	49	53	54	59
FRONT LENGTH(HSP)	50	54	56	58	62	64	66	68	71	72

MENS - TIGHT 1/2 SLEEVE



SIZES : MEN S-3XL | YOUTH XS-XL
PART #: AW-CMPS-117
FABRIC: 220g spandex 12% polyester 88%
DESCRIPTION: Our Tight 1/2 Sleeve is a modern 6-panel compression design with spandex mesh side inserts for increased breathability. All Tight compression garments feature accent flat lock stitching and reinforced seams. Compression garments are proven to increase circulation, performance and recovery in elite athletics. Our durable compression spandex fabric provides incredible range of motion, superb comfort and excellent moisture management.

CUT
FABRIC


SPANDEX12%-220GSM

POLYESTER88%-220GSM

MEN'S MEASUREMENT

unit: cm

PART	YS	YM	YL	YXL	S	M	L	XL	2XL	3XL
1/2CHEST	29	33	36	38	43	46	49	53	54	59
FRONT LENGTH(HSP)	50	54	56	58	62	64	66	68	71	72

MENS - TIGHT SHORTS



SIZES : MEN S-3XL | YOUTH XS-XL
PART #: AW-CMPS-201
FABRIC: 260g spandex 12% polyester 88%
DESCRIPTION: DESCRIPTION: Our Mens Tight Shorts are a 3-panel compression design that feature accent flat lock stitching, secure and flexible waistband and reinforced seams. Compression garments are proven to increase circulation, performance and recovery in elite athletics. Our durable compression spandex fabric provides incredible range of motion, superb comfort and excellent moisture management.

CUT
FABRIC

SPANDEX12%
POLYESTER88%-260GSM

MAN'S MEASUREMENT

unit: cm

PART	YS	YM	YL	YXL	XS	S	M	L	XL	2XL
OUTSEAM	29	31	33	35	39	41	43	45	47	49
1/2HIP	33	36	39	42	37	39.7	41	43	45	46

DINGER JERSEY SERIES



SIZES : MEN S-3XL | YOUTH XS-XL
PART #: AW-CMPS-118
FABRIC: 220g spandex 12% polyester 88%
DESCRIPTION: Our Tight Long Sleeve is a modern 6-panel compression design with spandex mesh side inserts for increased breathability. All Tight compression garments feature accent flat lock stitching and reinforced seams. Compression garments are proven to increase circulation, performance and recovery in elite athletics. Our durable compression spandex fabric provides incredible range of motion, superb comfort and excellent moisture management.

CUT
FABRIC


SPANDEX12%-220GSM

POLYESTER88%-220GSM

MAN'S MEASUREMENT

unit: cm

PART	YS	YM	YL	YXL	S	M	L	XL	2XL	3XL
1/2CHEST	29	33	36	38	43	46	49	53	54	59
FRONT LENGTH(HSP)	50	54	56	58	62	64	66	68	71	72

MENS - TIGHT 3/4 LEGGING



SIZES : MEN S-3XL | YOUTH XS-XL
PART #: AW-CMPS-202
FABRIC: 220g spandex 12% polyester 88%
DESCRIPTION: Our Mens Tight 3/4 Leggings are a 3-panel compression design that feature accent flat lock stitching, secure and flexible waistband and reinforced seams. Compression garments are proven to increase circulation, performance and recovery in elite athletics. Our durable compression spandex fabric provides incredible range of motion, superb comfort and excellent moisture management.

CUT
FABRIC

SPANDEX12%
POLYESTER88%-220GSM

MAN MEASUREMENT

unit: cm

PART	YS	YM	YL	YXL	XS	S	M	L	XL	2XL
OUTSEAM	54	57	61	63	64	65	66	66	67	68
1/2HIP	33	36	39	42	40	42	44	46	48	50

MENS - TIGHT LONG LEGGING


SIZES : MEN S-3XL | YOUTH XS-XL
PART #: AW-CMPS-203
FABRIC: 220g spandex 12% polyester 88%
DESCRIPTION: Our Mens Tight Long Leggings are a 3-panel compression design that feature accent flat lock stitching, secure and flexible waistband and reinforced seams. Compression garments are proven to increase circulation, performance and recovery in elite athletes. Our durable compression spandex fabric provides incredible range of motion, superb comfort and excellent moisture management.

**CUT
FABRIC**


SPANDEX12%
POLYESTER88%-220GSM

MAN MEASUREMENT		unit: cm									
PART		YS	YM	YL	YXL	XS	S	M	L	XL	2XL
OUTSEAM		54	57	61	63	64	65	66	66	67	68
1/2HIP		33	36	39	42	40	42	44	46	48	50

WOMENS - TIGHT FULL LENGTH LEGGINGS


SIZES : WOMEN XS-2XL
PART #: AW-CMPS-209
FABRIC: 260g spandex 12% polyester 88%
DESCRIPTION: Our "Women's Cut" Tight 3/4 Leggings are a 2-panel compression design that feature accent flat lock stitching, secure and flexible waistband and reinforced seams. Compression garments are proven to increase circulation, performance and recovery in elite athletes. Our durable compression spandex fabric provides incredible range of motion, superb comfort and excellent moisture management.

**CUT
FABRIC**


SPANDEX12%
POLYESTER88%-260GSM

WOMEN' S MEASUREMENT		unit: cm			
PART		S	M	L	XL
1/2HIP		32	33	35	36.5
OUTSEAM		58	59	60	61

WOMENS -TIGHT 3/4 LENGTH LEGGINGS


SIZES : WOMEN XS-2XL
PART #: AW-CMPS-208
FABRIC: 260g spandex 12% polyester 88%
DESCRIPTION: Our "Women's Cut" Tight 3/4 Leggings are a 2-panel compression design that feature accent flat lock stitching, secure and flexible waistband and reinforced seams. Compression garments are proven to increase circulation, performance and recovery in elite athletes. Our durable compression spandex fabric provides incredible range of motion, superb comfort and excellent moisture management.

**CUT
FABRIC**


SPANDEX12%
POLYESTER88%-260GSM

WOMEN' S MEASUREMENT		unit: cm			
PART		S	M	L	XL
1/2HIP		32	33	35	36.5
OUTSEAM		58	59	60	61

WRESTLING

QUANTUM WRESTLING SINGLET - MENS



SIZES : MEN S-3XL | YOUTH XS-XL

PART #: WR-JS-100

FABRIC: Heavyweight Compression Spandex

DESCRIPTION: Our Quantum Mens Wrestling Singlet is manufactured from heavyweight moisture wicking spandex fabric. Features a durable 2-panel design, double overlock stitching, silicone leg gripper and binding trim on arm and neck openings. The combination of fabric and design results is a superb singlet that offers incredible range of motion, superb comfort and excellent moisture management.

CUT FABRIC



SPANDEX -260GSM

MAN MEASUREMENT

unit: cm

PART	S	M	L	XL		
1/2CHEST	34	37	40	43		
BACK LENGTH (HSP)	50	50.5	53	55.5		

QUANTUM WRESTLING SINGLET - WOMENS



SIZES : WOMEN S-3XL

PART #: WR-JS-102

FABRIC: Heavyweight Compression Spandex

DESCRIPTION: Our Quantum Womens Wrestling Singlet is manufactured from heavyweight moisture wicking spandex fabric. Features a durable 2-panel design, double overlock stitching, silicone leg gripper and binding trim on arm and neck openings. The combination of fabric and design results is a superb singlet that offers incredible range of motion, superb comfort and excellent moisture management.

CUT FABRIC



SPANDEX -260GSM

MAN MEASUREMENT

unit: cm

PART	XS	S	M	L	XL	2XL
1/2CHEST	32	34	36	38	40	42
BACK LENGTH (HSP)	73	75	77	79	81	83

QUANTUM SHORT



SIZES : Mens XS-3XL / Womens XS-2XL
PART #: Mens / WR-JS-110
Womens / WR-JS-112
FABRIC: Heavyweight Compression Spandex
DESCRIPTION: Our Quantum Wrestling Shorts are manufactured from heavyweight moisture wicking spandex fabric. The shorts feature a durable 5-panel design, double overlock and fl at lock stitching and silicone leg and waist gripper as standard. This combination of fabric and design results in a superb short that offers incredible range of motion, superb comfort and excellent moisture management. Offered in mens and womens sizes.

CUT FABRIC



HOCKEY MESH-200 GSM

4WAY MESH -180 GSM

MEN'S MEASUREMENT		MEASUREMENT								unit: cm	
PART		XS	S	M	L	XL	2XL	3XL	4XL	5XL	6XL
1/2WAIST					40	43.5	46.5	50			
1/2HIP					53	54	55	56			
LENGTH					52	54	56	58			

MMA STYLE SHORT



SIZES : Mens S-3XL | Youth XS-XL | Womens S-2XL
PART #: Mens / WR-JS-300
Womens / WR-JS-302
FABRIC: 4-way stretch woven fabric
DESCRIPTION: Our new MMA Style Shorts are constructed from a lightweight 4-way stretch woven fabric that provides unsurpassed comfort and durability. Reinforced and fl at-lock stitching strengthens all stress points and provides a great look. Self fabric front patch completes the "MMA" look. Drawstring waist closure provides a secure fit. Makes a great wrestling, MMA or workout short.

CUT FABRIC



HOCKEY MESH-200 GSM

4WAY MESH -180 GSM

MEN'S MEASUREMENT		MEASUREMENT								unit: cm	
PART		XS	S	M	L	XL	2XL	3XL	4XL	5XL	6XL
1/2WAIST					40	43.5	46.5	50			
1/2HIP					53	54	55	56			
LENGTH					52	54	56	58			

TRACK SUIT

SPRINT CROP SINGLET



SIZES : WOMEN S-3XL | YOUTH XS-XL

PART #: TF-JS-107

FABRIC: 210g spandex

DESCRIPTION: Womens crop top length running singlet. Compression fabric ensures comfortable fit with complete range of motion

CUT FABRIC



SPAMDEX-210 GSM

MAN MEASUREMENT

unit: cm

PART	XS	S	M	L	XL
1/2CHEST	31	34	37	40	43
1/2 BOTTOM WIDTH	24	27	30	33	36
CENTER BACK LENGTH	29	31	33	35	37

DINGER JERSEY SERIES



SIZES : MEN S-3XL | WOMEN S-3XL | YOUTH XS-XL

PART #: Men TF-JS-101 / Women TF-JS-102

FABRIC: 130g birdeye 100% polyester

DESCRIPTION: Our Miler Singlet is a traditional design running singlet fabricated in our lightweight and highly breathable birdeye mesh fabric. Offered in both Men' and Womens cuts.

CUT FABRIC



BIRDEYE100% POLYESTER-130 GSM

WOMEN' S MEASUREMENT

unit: cm

PART	XS	S	M	L	XL
1/2CHEST	31	34.5	37.5	40.5	43.5
BACK LENGTH	63	65	67	69	71

MEN'S MEASUREMENT

unit: cm

PART	YS	YM	YL	YXL	S	M	L	XL
1/2CHEST	35	37	39	41	43	46	50	53
FRONT LENGTH	55	57	60	63	70	72	74	76

SPRINT SINGLET



SIZES : MEN S-3XL | WOMEN S-3XL | YOUTH XS-XL
PART #: Men TF-JS-105 / Women TF-JS-106
FABRIC: 210g spandex + 180g 4way mesh
DESCRIPTION: Our Sprint Singlets are offered in both Mens and Womens cuts. Manufactured from a combination of 4-way stretch spandex and 4-way stretch spandex mesh these singlets are both stylish and comfortable while still offering complete range of motion and enhanced ventilation.

CUT
FABRIC

4WAY MESH-180 GSM
 SPANDEX-210 GSM

WOMEN'S MEASUREMENT unit: cm

PART	XS	S	M	L	XL
1/2CHEST	31	34.5	37.5	40.5	43.5
BACK LENGTH	63	65	67	69	71

MEN'S MEASUREMENT unit: cm

PART	YS	YM	YL	YXL	S	M	L	XL
1/2CHEST	35	37	39	41	43	46	50	53
FRONT LENGTH	55	57	60	63	70	72	74	76

SWIFT SHORT



SIZES : MEN S-3XL | WOMEN S-3XL | YOUTH XS-XL
PART #: TF-SS-105
FABRIC: 120g 4way microfbire
DESCRIPTION: Traditional loose fit track short features our 4-way stretch woven body with interlock accent trim and mesh brief. Available in mens, womens and youth sizes.

CUT
FABRIC

4WAY MICRIBIRE
 -120 GSM

MEN'S MEASUREMENT unit: cm

PART	S	M	L	XL	2XL
1/2HIP	51	55	59	63	67
OUTSEAM	32	33	34	35	36

WOMEN'S MEASUREMENT unit: cm

PART	S	M	L	XL
1/2HIP	49	51	53	55
OUTSEAM	25	26	27	28

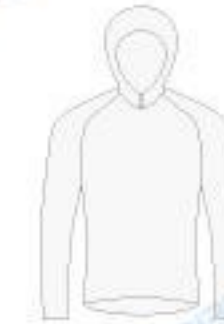
FISHING

HOODIED FASHING SHIRT



DESCRIPTION: these style fishing shirts were made by uv protection mesh fabric ,There is a hole in the cuff and a hat on top of the head can protect your hands from solar radiation, two pockets ,two pockets can hold some pocket money or place small items can be made by fully sublimated or pre-dyed solid fabric ,

CUT FABRIC



INTERLOCK-145 GSM

4WAY MESH-180 GSM

MAN MEASUREMENT

unit: cm

PART	S	M	L	XL	2XL
CHEST	48	50	52	54	56
SHOULDER BREADTH	40	41.8	43.6	45.4	47.2
SLEEVE LENGTH	62.5	64	65.5	67	68.5
CLOTHES LENGTH	66	68	70	72	74
HIGH CAP	35	36	37	38	39
CAP WIDTH	23	23.7	24.4	25.1	25.8

FISHING SHIRT LONG SLEEVES



DESCRIPTION: Fishing shirt long sleeves These fishing shirts style is similar to a long sleeves polo shirts , full sublimated on the 165 GSM anti-UV fabrics with creative designs , will good luck to you to have a havest

CUT FABRIC



BIRDEYE MESH 165G

MEN MEASUREMENT

unit: cm

PART	XS	S	M	L	XL	2XL	3XL	4XL	5XL
1/2CHEST	51	53	56	58	61	65	69	73	77
CENTRE BACK	68	70	73	75	78	82	86	89	93
SLV LENGTH	53	54	56	57	59	60	62	62	62

FISHING SHIRT WITH HIDDEN ZIPPER


DESCRIPTION: These fishing shirts style is similar to a long sleeves polo shirts with hidden zipper , full sublimated on the 165 GSM anti-UV fabrics with creative designs , will good luck to you to have a havest

**CUT
FABRIC**


BIRDEYE MESH 165G

MEN MEASUREMENT		unit: cm									
PART	XS	S	M	L	XL	2XL	3XL	4XL	5XL		
1/2CHEST	51	53	56	58	61	65	69	73	77		
CENTRE BACK	68	70	73	75	78	82	86	89	93		
SLV LENGTH	53	54	56	57	59	60	62	62	62		

SLEEVES FISHING SHIRT


DESCRIPTION: sleeves fishing shirts is made by 165 GSM anti-UV fabrics with creative designs ,3 buttons down, full sublimated ,quick dry and breathable

**CUT
FABRIC**


BIRDEYE MESH 165G

MEN MEASUREMENT		unit: cm									
PART	XS	S	M	L	XL	2XL	3XL	4XL	5XL		
1/2CHEST	51	53	56	58	61	65	69	73	77		
CENTRE BACK	68	70	73	75	78	82	86	89	93		
SLV LENGTH	53	54	56	57	59	60	62	62	62		

CYCLING

CYCLING PANTS



SIZES : MEN S-3XL | YOUTH XS-XL

PART #: CY-JS-100

FABRIC: Lightweight Birdeye Mesh

DESCRIPTION: Our premium bib shorts are manufactured from a combination of lightweight dri fit fabric and 4-way stretch mesh for ventilation. the designs feature the 4 needle 6 thread stitching. Silicone gripper hem won't ride up when you're sown in drop,Insert with the imported italian cycling gel pad

CUT FABRIC



INTERLOCKSPANDEX
-210GSM

4WAYMESH-180GSM

MEN MEASUREMENT

unit: cm

PART	S	M	L	XL	XXL	3XL				
WAIST	62	64	66	68	70	72				
INGROWTH	62	64	66	68	70	72				
FOREIGN CLOTHES	96	98	100	102	104	106				

CYCLING LONG SLEEVES SHIRT



DESCRIPTION: Our premium cycling shorts/pants are manufactured from a combination of 20%spandex80%poly-ester supreme quality lycra fabric . the designs feature the 4 needle 6 thread stitching. Supre soft and comfortable

CUT FABRIC



INTERLOCKSPANDEX
-210GSM

4WAYMESH-180GSM

MEN MEASUREMENT

unit: cm

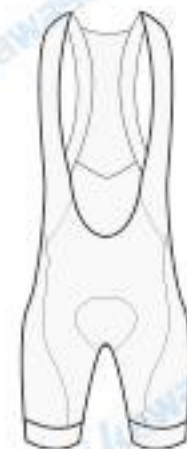
PART	S	M	L	XL	XXL	3XL				
BUST	95	97	101	105	109	113				
AFTER THE LENGTH	69	71	73	75	77	79				
FOREPART LENGTH	53	55	57	58	60	62				
OUTSIDE SLEEVE	72	74	76	78	80	82				

CYCLING BIB SHORTS



DESCRIPTION: Our premium bib shorts are manufactured from a combination of lightweight dri fit fabric and 4-way stretch mesh for ventilation. the designs feature the 4 needle 6 thread stitching. Silicone gripper hem won't ride up when you're sown in drop,Insert with the imported italian cycling gel pad

CUT FABRIC



INTERLOCKSPANDEX
-210GSM

MEN MEASWEMENT

unit: cm

PART	2XS	XS	S	M	L	XL	2XL	3XL	4XL
TOTAL LENGTH	39	41	43	45	47	49	51	53	55
FRONT RISE	19	20	21	22	23	24	25	26	27
INNER LENGTH	20	21	22	23	24	25	26	27	28
LEG OPENING	31	33	35	37	39	41	43	45	47
BACK STRAPS LENGTH FOR BIBS	35.5	36.5	36.5	37.5	37.5	38.5	38.5	39.5	39.5

CYCLING SHORTS



DESCRIPTION: Our premium bib shorts are manufactured from a combination of lightweight dri fit fabric and 4-way stretch mesh for ventilation. the designs feature the 4 needle 6 thread stitching. Silicone gripper hem won't ride up when you're sown in drop,Insert with the imported italian cycling gel pad

CUT FABRIC

INTERLOCKSPANDEX
-210GSM

MEN MEASWEMENT

unit: cm

PART	2XS	XS	S	M	L	XL	2XL	3XL	4XL
TOTAL LENGTH	39	41	43	45	47	49	51	53	55
FRONT RISE	19	20	21	22	23	24	25	26	27
INNER LENGTH	20	21	22	23	24	25	26	27	28
LEG OPENING	31	33	35	37	39	41	43	45	47
BACK STRAPS LENGTH FOR BIBS	35.5	36.5	36.5	37.5	37.5	38.5	38.5	39.5	39.5

CYCLING SHIRT



DESCRIPTION: Our premium cycling shorts/pants are manufactured from a combination of 20%spandex80%poly-ester supreme quality lycra fabric . the designs feature the 4 needle 6 thread stitching. Supre soft and comfortable

CUT FABRIC



SPANDEX-210GSM

MEN MEASWEMENT

unit: cm

PART	S	M	L	XL	2XL	3XL	4XL
FRONT ZIP LENGTH	50	52	54	56	58	60	61
CIRCUM	95	99	103	107	111	115	119
BACK LENGTH	64	66	68	70	72	74	76
CUFF OPENING	25	26	27	28	29	30	31
HEN STRENTCHING	70-86	74-90	78-94	82-98	86-102	90-106	94-110

FASHION

ALL OVER PRINT TEE



DESCRIPTION: Our all over designs are printed on ultra-soft fabric and then individually sewn together to ensure a flawless graphic and a comfortable fit. The shirt is made with 100% Premium Polyester and the artwork On Front & Back

CUT FABRIC



SPANDEX-210GSM

4WAYMESH-180GSM

MEN MEASUREMENT unit: cm

PART	YS	YM	YL	YXL	XS	S	M	L	XL	2XL
1/2CHEST	37	39	42	45.5	49.5	53.5	56	58	62	66
LENGTH(HSP)	46	49.5	54	58.5	63.5	71	73.5	76	78.5	81

ALL OVER PRINT TANK TOPS



DESCRIPTION: Our all over designs are printed on ultra-soft fabric and then individually sewn together to ensure a flawless graphic and a comfortable fit. The shirt is made with 100% Premium Polyester and the artwork On Front & Back

CUT FABRIC



SPANDEX-210GSM

4WAYMESH-180GSM

MEN MEASUREMENT unit: cm

PART	YS	YM	YL	YXL	S	M	L	XL		
1/2CHEST	35	37	39	41	43	46	50	53		
LENGTH(HSP)	55	57	60	63	70	72	74	76		

ALL over print crew neck sweatshirt



DESCRIPTION: This premium sweat-shirt is handmade by highly skilled craftsmen .Each panel is individually cut, then sewn together to ensure a flawless graphic with zero imperfections.

CUT FABRIC



INTERLOCK SPANDEX
-210GSM
4WAY MESH-180GSM

MEN MEASUREMENT		unit: cm									
PART	YS	YM	YL	YXL	XS	S	M	L	XL	2XL	
1/2CHEST	39	42	45.5	49.5	53.5	56	58.5	58.5	62	66	
LENGTH(HSP)	53	56.5	61.5	66.5	75	77.5	80	83	85	87.5	

ALL OVER PRINT HOODIES



DESCRIPTION: This premium hoodie is handmade by highly skilled craftsmen .Each panel is individually cut, then sewn together to ensure a flawless graphic with zero imperfections.

CUT FABRIC



SPANDEX POLY-210GSM
4WAY MESH-180GSM

MEN MEASUREMENT		unit: cm									
PART	YS	YM	YL	YXL	S	M	L	XL	2XL	3XL	
1/2CHEST	52	56	60	64	67	69	71	73	75	77	
BACK CENTRE LENGTH	44	46	48	50	52	56	60	65	70	75	

ALL OVER PRINT SWEAT PANTS



DESCRIPTION: The pants are printed on ultra-soft fabric and then individually sewn together to ensure a flawless graphic and a comfortable fit.
100% Microfiber Polyester,
Elastic Waist With Drawstring,
2 Front Pockets
Moisture Wicking

CUT FABRIC



SPANDEX-210GSM
4WAY MESH-180GSM

MEN MEASUREMENT		unit: cm									
PART	XS	S	M	L	XL	2XL	3XL	4XL	5XL	6XL	
1/2WAISTLINE	27.5	31	34.5	38	41.5	45	48.5	52	55.5	59	
OUTSIDE LENGTH	97	99	101	103	105	107	109	111	113	115	

ELECTRONIC SPORTS

ATTACK CAP SLEEVE - WOMEN



DESCRIPTION: Our mission is to provide quality apparel to esports teams and e-athletes with the functionality and emotional edge, the Kawasaki Esports T-shirts feature a combination of comfortable and stylish interlock fabric coupled with high breathable 4 way stretch mesh inserts.

CUT FABRIC



INTERLOCK SPANDEX
-210GSM

4WAYMESH-180GSM

MAN MEASUREMENT		unit: cm									
PART	YXS	YS	YM	YL	YXL	S	M	L	XL	2XL	3XL
1/2CHEST	37	39	42	45	49.5	53	56	58	62	86	68
FRONT LENGTH(HSP)	46	49	54	58	63	71	73	76	78	81	83.5

ATTACK LONG SLEEVE - WOMEN



DESCRIPTION: This hoodie is the perfect choice for playing electronic game, cheer and gymnastic clubs and features a full zip design with flat lock stitching throughout. Manufactured from our 4-way stretch DNA fabric this hoodie is the ultimate in comfort and style.

CUT FABRIC



SPANDEX POLY-210GSM

4WAYMESH-180GSM

MEN MEASUREMENT		unit: cm								
PART	YS	YM	YL	YXL	S	M	L	XL	2XL	3XL
1/2CHEST	52	56	60	64	67	69	71	73	75	77
BACK CENTRE LENGTH	44	46	48	50	52	56	60	65	70	75

ATTACK SLEEVELESS - WOMEN



FABRIC: spandex-210gsm4way-mesh-180gsm
DESCRIPTION: Our all over designs are printed on ultra-soft fabric and then individually sewn together to ensure a flawless graphic and a comfortable fit. The shirt is made with 100% Premium Polyester and the artwork On Front & Back

CUT
FABRIC


SPANDEX-210GSM

MEN MEASUREMENT		unit: cm									
PART	YS	YM	YL	YXL	XS	S	M	L	XL	2XL	
1/2CHEST	39	42	45.5	49.5	53.5	56	58.5	58.5	62	66	
LENGTH(HSP)	53	56.5	61.5	66.5	75	77.5	80	83	85	87.5	

SENTINEL CAP REVERSIBLE - WOMEN



DESCRIPTION: This jacket is the perfect choice for playing electronic game, cheer and gymnastic clubs and features a full zip design with flat lock stitching throughout. Manufactured from our 4-way stretch DNA fabric this jacket is the ultimate in comfort and style.

CUT
FABRIC


SPANDEX POLY-210GSM

MEN MEASUREMENT		unit: cm									
PART	YS	YM	YL	YXL	XS	S	M	L	XL	2XL	
LENGTH	68	70	72	74	76	78	80	82	84	86	
WIDE	53	55	57	59	61	63	65	67	69	71	
OUTSIDE SLEEVE	48	50	52	54	56	58	60	62	64	66	

RACING SUIT

LONG SLEEVES RACING SHIRT



DESCRIPTION: Our racing shirt is modern and light weight with-Compression style which are proven to increase circulation, performance and recovery in motor-cycling athletics. Our durable mesh spandex fabric provides incredible range of motion, superb comfort and excellent moisture management.

CUT FABRIC


INTERLOCKSPANDEX
-210GSM

4WAYMESH-180GSM

MAN	MEASUREMENT	unit: cm									
PART	SM	MD	LG	XL	2XL	3XL					
CHEST	21	22.5	24	25.5	27	29					
SLEEVE	30	30.5	31	31.5	32	32.5					

DESERT RACING SHIRT



DESCRIPTION: Full button woven short sleeve. Using the hard woven fabric to keep a strong feeling ,full sublimated printing makes the shirts never fade even in Wind and rain

CUT FABRIC



SPANDEX POLY-210GSM

4WAYMESH-180GSM

STANDART FIT unit: cm										
	10	12	14	16	XS	S	M	L	XL	2XL
FRONT LENGTH(HSP)	60	64	68	70	72	74	76	78	80	82
1/2 CHEST	42	44	46	49	52	55	57	60	62.5	65
PRO FIT unit: cm										
	7-8	9-10	11-12	2XS	XS	S	M	L	XL	2XL
CONTRE BACK(HSP)	55	57	59	65	67	69	71	73	76	78
1/2 CHEST	32	34.5	37	38.5	41	43.5	46	49	52	55
FEMALE FIT unit: cm										
PART	YXS	YS	YM	YL	YXL	XS	S	M	L	XL
1/2CHEST	50	52	56	58	60	62	64	66	68	70
FRONT LENGTH(HSP)	32	34	36	38	40	42.5	45	47.5	50	52.5

OUTFIELD

CHEERLEADING SHIRT



DESCRIPTION: When the big game or competition is approaching, the last thing you want to worry about is your uniform. Cheerleading is about exuding excitement and looking great all the time, so you need uniforms that are going to match your energy, our cheerleading uniforms were made by 200GSM supreme spandex polyester, high elastic and comfortable

CUT FABRIC



INTERLOCKSPANDEX
-210GSM

MAN	MEASUREMENT	4	6	8	10	12	14	16	18	20	22	24
	PART											
	BUST	32	33	34	35	36	38	39	41	43	45	49
	WAIST	61	63	66	68	71	75	79	82	87	93	108
	HIPS	87	90	93	95	98	101	105	109	114	119	134

unit: cm

CHEERLEADING SHORTS



DESCRIPTION: When the big game or competition is approaching, the last thing you want to worry about is your uniform. Cheerleading is about exuding excitement and looking great all the time, so you need uniforms that are going to match your energy, our cheerleading uniforms were made by 200GSM supreme spandex polyester, high elastic and comfortable

CUT FABRIC



SPANDEX POLY-210GSM

MAN	MEASUREMENT	4	6	8	10	12	14	16	18	20	22	24
	PART											
	BUST	32	33	34	35	36	38	39	41	43	45	49
	WAIST	61	63	66	68	71	75	79	82	87	93	108
	HIPS	87	90	93	95	98	101	105	109	114	119	134

unit: cm

POLO Shirts



DESCRIPTION: The Coach Polo is a our traditional polo shirt offered in a variety of 2-way stretch knit fabrics to suit every performance requirement. Offered in both men's and women's cuts the Baha Polo is a 4-panel, 2-button design that features overlock construction and reinforced self collar. All fabrics offered are both anti-microbial and moisture wicking. See fabric benefits on previous page. Optional long sleeve and chest pocket.rts

CUT FABRIC



INTERLOCK
POLYESTER-260 GSM

STANDART FIT unit: cm											
	10	12	14	16	XS	S	M	L	XL	2XL	3XL
FRONT LENGTH(HSP)	60	64	68	70	72	74	76	78	80	82	84
1/2 CHEST	42	44	46	49	52	55	57	60	62.5	65	67.5
PRO FIT unit: cm											
	7-8	9-10	11-12	2XS	XS	S	M	L	XL	2XL	3XL
CONTRE BACK(HSP)	55	57	59	65	67	69	71	73	76	78	80
1/2 CHEST	32	34.5	37	38.5	41	43.5	46	49	52	55	58
female fit unit: cm											
PART	YXS	YS	YM	YL	YXL	XS	S	M	L	XL	2XL
Centre back(hsp)	50	52	56	58	60	62	64	66	68	70	72
1/2CHEST	32	34	36	38	40	42.5	45	47.5	50	52.5	55

FREE SPIRIT PULLOVER HOODIE



DESCRIPTION: Our traditional design Free Spirit Hoodie is offered in both a pullover and full zip design. Both models feature an adjustable drawstring neck, large center pocket (s) and self fabric cuffs. The Free Spirit Hoodie is manufactured from our DNA 4-way stretch fabric which offers outstanding comfort, durability and range of motion. Both models are available with an optional polar fl eece liner for 4-season comfort.

CUT FABRIC



INTERLOCK POLYESTER-190 GSM

MAN MEASWEMENT unit: cm											
PART	YS	YM	YL	YXL	S	M	L	XL	2XL	3XL	
BACK CENTRE	52	56	60	64	67	69	71	73	75	77	
1/2CHEST	44	46	48	50	52	56	60	65	70	75	

TRAINING LONG SLEEVES HOODIES



DESCRIPTION: Our new light-weight Training Hoodies feature the same great styling as our heavyweight hoodies in a light-weight design. Ideally suited for both inside and outside use the Training Hoodies are offered in both a traditional long sleeve design as well as a sleeveless. These unique offerings are a cross between a traditional hoodie and a t-shirt and feature large center pockets and double sided hood sublimation.

CUT FABRIC



SPANDEX -280 GSM OR FLEECE
TERRY -255GSM SELF
FABRIC CUFF

MAN MEASWEMENT unit: cm											
PART	YS	YM	YL	YXL	S	M	L	XL	2XL	3XL	
BACK CENTRE	52	56	60	64	67	69	71	73	75	77	
1/2CHEST	44	46	48	50	52	56	60	65	70	75	

REACTION KNIT WARM UP JACKET



DESCRIPTION: Our Reaction Knit Warm Up Jacket is traditionally styled warm up jacket offered in both men's and womens cuts. The jacket features full length zipper with neck protector, side pockets and self cuff. The Reaction Knit Warm Up Jacket is offered in a variety of knit fabrics to suit every performance characteristic and budget. Please refer to Outerwear Collection fabric descriptions at the beginning of this section for features and benefits of each fabric.]

CUT FABRIC



SPANDEX-280 GSM
FLEECE/TERRY-225
GSM SEF FABRIC C
UFF

MAN MEASWEMENT unit: cm											
PART	YS	YM	YL	YXL	S	M	L	XL	2XL	3XL	
BACK CENTRE	52	56	60	64	67	69	71	73	75	77	
1/2CHEST	44	46	48	50	52	56	60	65	70	75	

REACTION WARM UP PANT


DESCRIPTION: Our Reaction Warm Up Pant is a traditionally styled pant that features side pockets, elastic waistband and a unique 4-way stretch mesh insert at back of pant for comfort and breathability. The Reaction Warm Up Pant is offered in a variety of fabrics designed to match up with our Reaction, Response, Elements and Team Jackets. Please refer to Outerwear Collection fabric descriptions at the beginning of this section for features and benefits of each fabric.

**CUT
FABRIC**


STRETCHABLE MICRO FIBRE-120GSM

MESH POLYESTER -180GSM

MAN	MEASUREMENT													
PART	S	M	L	XL	2XL	3XL								
OUTSEAM	104	106	109	112	114	116								
1/2CHEST	51	54	57	61	64	67								

unit: cm

POWER LONG SLEEVE


DESCRIPTION: Our Power Long Sleeve offers traditional t-shirt styling for both men and women. The men's cut features a crew neck collar and the women's cut feature a v-neck. The Power Short Sleeve is offered in 3 fabrics - Interlock, Bird-eye and Mini Waffle. Please see fabric benefits at end of this section. All fabrics are moisture wicking and anti-microbial.

**CUT
FABRIC**


SPANDEX -280 GSM OR FLEECE

TERRY -255GSM SELF FABRIC CUFF

MEN	MEASUREMENT													
PART	S	M	L	XL	2XL	3XL								
1/2CHEST	53	56	58.5	62	66	68.5								
BACK CENTRE	71	73.5	76	78.5	81	83.5								

unit: cm

WOMEN	MEASUREMENT													
PART	XS	S	M	L	XL	2XL								
1/2CHEST	42.5	45	47	50	52.5	55								
BACK CENTRE	62	64	66	68	70	72								

unit: cm

POWER SHORT SLEEVE


DESCRIPTION: Our Power Short Sleeve offers traditional t-shirt styling for both men and women. The men's cut feature a crew neck collar and standard sleeves and the women's cut feature a v-neck and cap sleeves. The Power Short Sleeve is offered in 3 fabrics - Interlock, Bird-eye and Mini Waffle. Please see fabric benefits at end of this section. All fabrics are moisture wicking and anti-microbial.

**CUT
FABRIC**


INTERLOCK POLYESTER-190 GSM

MAN	MEASUREMENT													
PART	YXS	YS	YM	YL	YXL	S	M	L	XL	2XL	3XL			
1/2CHEST	37	39.5	42	45.5	49.5	53.5	56	58	62	66	68.5			
BACK CENTRE	46	49	54	58	63	71	73	76	78	81	83.5			

unit: cm

TRAINING SLEEVELESS HOODIES


DESCRIPTION: Our new lightweight Training Hoodies feature the same great styling as our heavyweight hoodies in a lightweight design. Ideally suited for both inside and outside use the Training Hoodies are offered in both a traditional long sleeve design as well as a sleeveless. These unique offerings are a cross between a traditional hoodie and a t-shirt and feature large center pockets and double sided hood sublimation.

**CUT
FABRIC**


INTERLOCK POLYESTER-190 GSM

MAN	MEASUREMENT													
PART	YS	YM	YL	YXL	S	M	L	XL	2XL	3XL				
BACK CENTRE	52	56	60	64	67	69	71	73	75	77				
1/2CHEST	44	46	48	50	52	56	60	65	70	75				

unit: cm