

Bimetal Thermometers for food service
Stainless Steel version

OVEN THERMOMETER

"OT" SERIES

REFRIGERATOR THERMOMETER

"RT" SERIES



APPLICATIONS

Oven, refrigerator, household, hotel, manufacturer.

DESCRIPTION

These thermometers are designed for measuring the temperature in a simple way, just by putting them into the oven or the refrigerator.

Easy to be carried inside pocket or bag. All Stainless Steel 304 material.

ASME B40.200-2008
(Revision of ASME B40.200-2001)

GENERAL SPECIFICATIONS

Case: corrosion resistant SS304 case and bezel. Designed and constructed for food service, which prevents fogging and damage caused by moisture to the working components.

Dial: aluminum flat type. It offers accurate indication of °C and °F scales.

Window: glass lens. The glass lens is suitable for high temperatures.

Bimetal Element: an extremely responsive temperature sensing element which has been carefully sized and tested in order to ensure continued accuracy.

Standards: QualityWell manufactures bimetal thermometers for food service in compliance with ASME_B40.200-2008 standards.

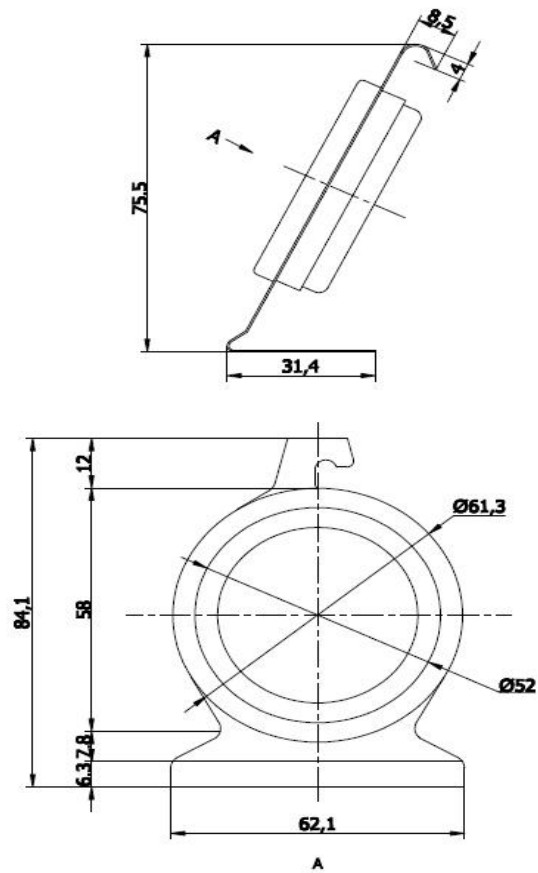
Accuracy: $\pm 25^{\circ}\text{F}$ (10°C) oven thermometer, $\pm 2^{\circ}\text{F}$ (1°C) refrigerator thermometer.

One Year Warranty: the units are guaranteed to be free from defects in material and workmanship under normal use and service.

STANDARD FEATURES

| | |
|--|--|
| Measuring element: | bi-metal coil |
| Case: | SS304 |
| Bezel: | SS304, sealed type |
| Nominal Size: | 2.5" (63mm) |
| Dial: | aluminum, flat, black lettering |
| Pointer: | aluminum, red |
| Window: | glass |
| Accuracy: | $\pm 25^{\circ}\text{F}$ (10°C) OT series, $\pm 2^{\circ}\text{F}$ (1°C) RT series |
| Range: | single in °C or °F, double in °C & °F |
| Temperature limits for storage and transport: | -20 ... +80°C |

STANDARD SIZE:



How to Order

QualityWell
Standard

OT (RT) - **221** - **(Range)**

| Description | Dial | Range |
|-------------------------------|------------|---|
| OT = Over Thermometer | 221 = 2.5" | All Ranges from -40C~ +120C~ +300C~ +500C |
| RT = Refrigerator Thermometer | | |

Options:

- ☆ Custom / Logo Dials
- ☆ Range: Single in °C or °F , Dual in °C and °F
- ☆ High Temperature(up to 500C)