

TX-90140ST Anti-drip Ink Electric Flatbed Screen Printing Machine



★Scope of application

This 90140ST anti-drip electric flatbed screen printing machine is widely applicable to printing on large-size wood boards, aluminum plates, steel plates, acrylic boards, advertising stickers, cardboard packaging and other products .

★Main parameters

model	TX-90140ST	Printing thickness	≤ 50mm
Maximum printing size	900*1400mm	Printing pressure	4.0~6.0 kfg/cm ²
Platform size	1000*1500mm	Voltage/Power	380V/50HZ/4.5KW
Maximum Frame	1300*1800mm	Machine size	L2100*W1500*H1760mm
Highest Print Speed	800 pcs/h	Machine weight	1250KG

★Main Performance

1. Vertical structure, the vertical lifting of the screen is driven by a variable frequency electric motor, and the left and right movement of the printing head is driven

by a variable frequency electric motor.

2. The microcomputer control circuit uses independent motors to drive both printing and screen lifting .

3. The switching of the printing /return ink blade holder is driven by a Taiwanese brand cylinder , with the stroke controlled by a photoelectric eye and independently calibrated.

4. Three modes are available: manual, semi-automatic, and fully automatic, with digital control of printing indirect time.

5. The independently designed printing head lifting device makes it convenient to load and unload the doctor blade/return blade, screen, and clean the screen.

6. The left and right mesh clamps are equipped with double guide posts and a plate spacing adjustment device for easy adjustment.

7. The print head is equipped with **an anti-drip device** , which can effectively prevent ink from dripping onto the board when the print head is lifted.

★ Detailed Display



Partial display



exhaust countertop



Imprint head structure



Imprint head structure



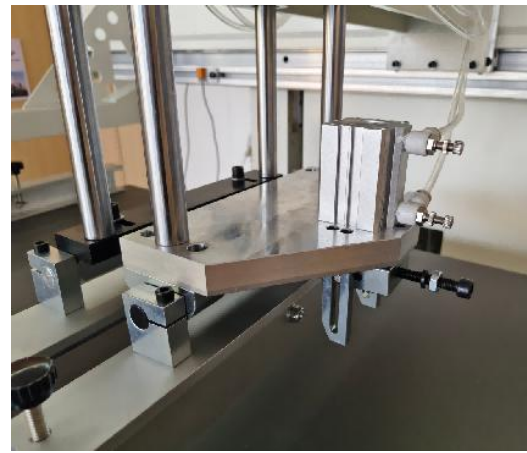
Left arm



Right arm



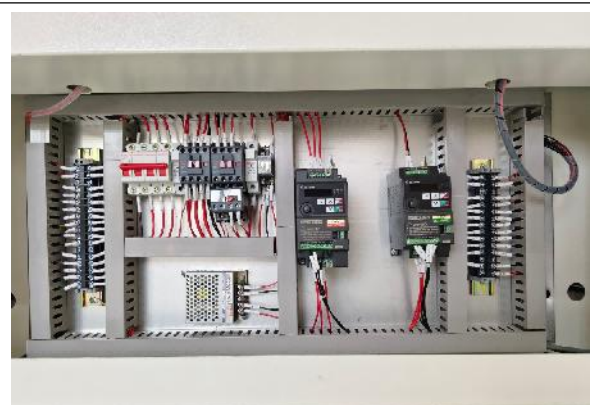
Platform fine-tuning handle



Anti-drip ink device



Control panel and emergency stop switch



Control circuit



Main beam lifting guide rail



Main beam lifting gear motor



left and right motors of the printing head



Foot switch

★ Configuration Instructions

- ① The machine is controlled by a microcomputer .
- ② The circuit uses Delixi AC contactors and Philicos photoelectric proximity switches.
- ③ The printing process uses a Taiwanese brand geared motor and a Taiwanese brand frequency converter to control the printing drive.
- ④ The printing doctor blade and ink return blade are controlled by pneumatic components from a Taiwanese brand .
- ⑤ The left and right horizontal scraping uses HIWIN precision linear guides made in Taiwan.
- ⑥ The printing plate is filled with an aluminum honeycomb structure, with a hard

anodized surface and suction holes .

★ Configuration List

Serial Number	Accessory Name	Accessory Brands	Parts manufacturing location	Component
1	Gear reducer motor	WanXin	Taiwan	print
2	guide	HIWIN	Taiwan	print
3	cylinder	H&N	Taiwan	scraper / ink scraper
4	speed reducer	Taiwanese brands	Taiwan	Main beam lifting
5	Lifting motor	Gui Fong	China	Main beam lifting
6	frequency converter	Zhongchen	Taiwan	Main beam lifting
7	frequency converter	Shihlin	Taiwan	Printing drive control
8	AC contactor	Delixi	China	Overall machine control
9	relay	Delixi	China	Overall machine control
10	microcomputer controller	JIP Technology	China	Overall machine control
11	Control switch	Taiwanese brands	Taiwan	Overall machine control
12	proximity switch	FANICS	China	Overall machine control
13	Air source pressure regulating valve	NANPU	China	Overall machine control
14	Solenoid valve	Yadek	Taiwan	Overall machine control
15	Gas source connector	Shih An	Taiwan	Overall machine control
16	Vacuum pump	Gree	Suzhou, China	Printing platform
17	breaker	Delixi	China	Overall machine control
18	Suction Flat Plate	Tao Xing	Self-produced	Printing platform

★Machine maintenance

- ① Before starting work, clean the machine of any debris and wipe it clean. Regularly add lubricating grease to moving parts such as guide rails, guide pillars, and bearings.
- ② The worktable is a critical component affecting printing quality. To prevent impacts from hard objects, ink, thinner, and other organic solvents must not be dripped onto the worktable surface during printing.
- ③ The control panel and buttons should be protected from direct or indirect contact with solvents such as thinner and thinner to prevent damage.
- ④ The purpose of painting the frame is to prevent the machine from rusting. It is important to prevent solvents such as thinner and thinner from coming into direct or indirect contact with the machine and causing damage.
- ⑤ Wastewater and dirt should be drained from the oil mist combiner promptly to prevent them from entering the pneumatic components and affecting normal operation. The oil cup should be cleaned regularly, and 2 % lubricating oil should be added to the oil cup of the oil mist combiner.
- ⑥ When adjusting the flow restrictor valve, the tightening nut must be loosened first before adjusting by hand. The handle screw on the machine is for positioning; once it is securely positioned, it does not need to be tightened excessively.
- ⑦ After work, turn off the power / gas supply, clean the wire mesh, and store it properly. Protect it from dust , pressure , and puncture by hard objects.

★Delivery List

Serial Number	Tool Name	Specification	unit	quantity	Remark
1	power cord	Standard configuration	root	1	
2	Foot switch	Standard configuration	indivual	1	
3	Phillips screwdriver	Standard configuration	Bundle	1	
4	movable wrench	Standard configuration	Bundle	1	
5	Allen wrench	Standard configuration	set	1	
6	Toolbox	Standard configuration	Indivual	1	
7	Instruction Manual		Book	1	

★Corporate Image





★ Company Honors



★ After-sales service instructions

- ① support for all products shipped from our factory .
- ② After installation and commissioning, it comes with a one-year free warranty (excluding consumable parts and damage caused by human error), and lifetime

maintenance.

- ③ We conduct regular visits for maintenance, on-site operation, and technical training.
- ④ After-sales service content:
 - ▲ If the equipment malfunctions, please first contact us by phone. If the problem cannot be resolved by phone, our company will arrive on-site as soon as possible to resolve the issue.
 - ▲ Our after-sales service includes not only equipment repair and maintenance, but also dedicated support in process technology. Our technical staff can provide on-site technical training and offer a complete set of screen printing process technology, information and equipment solutions.
 - ▲ Professional technicians will visit users periodically to monitor the usage of their equipment.
 - ▲ Repair and maintenance of screen printing equipment and auxiliary equipment.
 - ▲ Design and customize screen printing equipment and auxiliary equipment for special products.