

TX- 4060SF-A automatic loading and positioning screen printing machine



★ Application areas

This automatic loading flat screen printer is suitable for high-precision positioning printing on wood boards, aluminum substrates, PCB circuit boards, home appliance glass, ABS, computer keyboards, plastic hardware, membrane switches, button nameplates and other products .

★ Main parameters (manual measurement, there are errors)

Machine Model	TX - 4060SF-A	Printing size	Maximum 400*600mm Minimum 250*300mm
Work surface size	750 * 1000mm	Maximum screen frame	800 * 1200 mm
Printing thickness range	0~30 mm-30 mm	Printing accuracy	±0.03 mm

Printing speed	1000pcs/h	Printing pressure	0.5-0.6Mpa
Vertical and horizontal fine adjustment of workbench	±10 mm	Air consumption	About 35L/min
Power supply/power	AC380V / 3.5KW	Machine weight	About 1000KG
Body size	Length 1520* width 1200* height 1740mm	Conveyor belt size	Length 2130*width 130mm
Loading machine size	Length 1080*Width 1200*1300mm	Silo size	Length 800*Width 600 * Lifting height 350mm

★Main performance

Application and performance characteristics:

1. Automatic feeding, automatic dust removal, automatic positioning printing.
2. Adopt PLC control circuit and touch screen operation panel, with sensitive operation and complete functions. The electrical and pneumatic components are all international brands, with stable product performance and reliable quality.
3. The vertical lifting is driven by a variable frequency motor and controlled by a frequency converter, which has a long service life and stable operation;
4. The printing movement is driven by a motor, with variable frequency speed regulation and free switching of the scraper;
5. The printing platform has high precision, scientific structure, small air resistance, strong vacuum suction force during operation, and the first printing platform adjustment mechanism to solve similar
The problem of difficulty in adjusting the thickness of the substrate of the machine model;
6. The first mechanical synchronous off-grid mechanism of the same type of machine improves the printing suitability of the whole machine. Equipped with multiple protection systems to ensure safe operation .

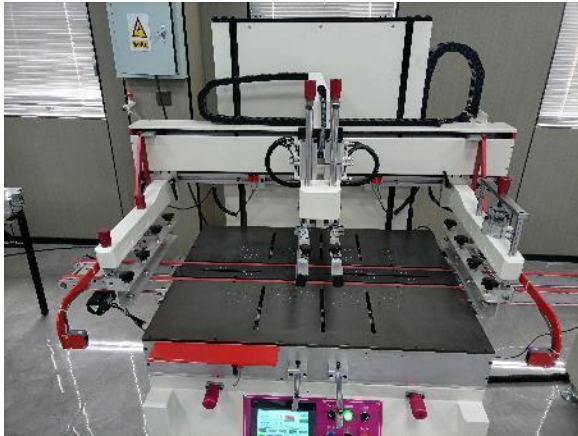
★ Details display



Appearance



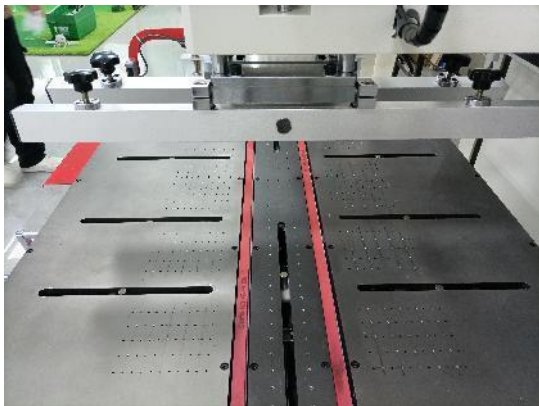
Print head



Girder and frame clamp



control Panel



Positioning table



conveyor



Automatic feeding machine



Feeder silo

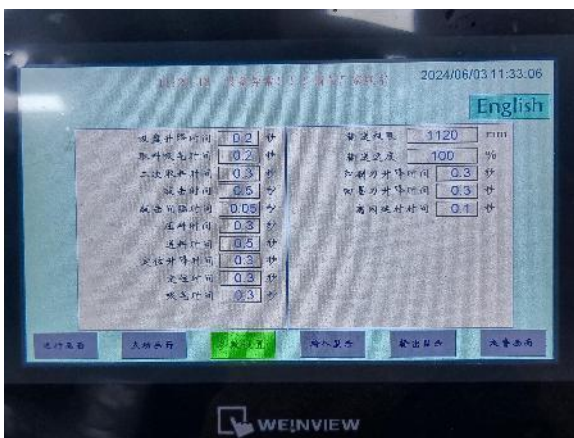
★ Touch screen operation interface



Running screen



Click animation



Parameter settings



Input Display

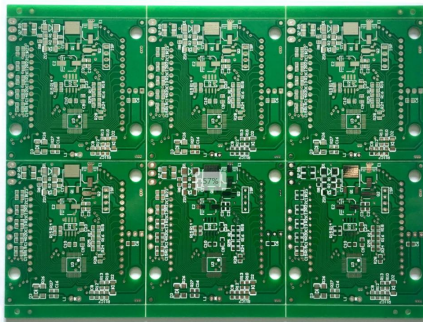


Output Display

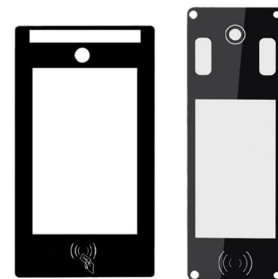


Alarm screen

★ Printing samples



PCB circuit board



Home appliance glass



Wooden Jigsaw Puzzle



Metal nameplate

★ Main components configuration

Parts Name	brand	Parts Name	brand
Frequency Converter	Taiwan Zhengxuan	AC contactor	CHINT

Gear motor	Taiwan	Limit switch	Taiwan Yangming
Linear Guides	Taiwan SDAT	Proximity switches	Taiwan Yangming
Intermediate relay	CHINT	cylinder	AirTac
Solenoid valve	AirTac	Oil-water separator	AirTac
Flow limiting valve	AirTac	Thermal relay	CHINT

★ Delivery tools list

Serial number	Tool Name	Specification	unit	quantity	Remark
1	Power cord	Standard	root	1	
2	Foot switch	Standard	individual	1	
3	Phillips screwdriver	Standard	Bundle	1	
4	Adjustable wrench	Standard	Bundle	1	
5	Hexagon socket wrench	Standard	set	1	
6	Toolbox	Standard	individual	1	
7	User Manual		Book	1	

★ After-sales service instructions

- ① support for all factory products .
- ② After installation and commissioning, free warranty for one year (excluding wearing parts and man-made damage) and lifelong maintenance.
- ③ Conduct maintenance visits, on-site operations and technical training at irregular intervals.
- ④ After-sales service content:
 - ▲ If the equipment fails, we will first communicate by phone. If the problem cannot be solved, our company will arrive at the site as soon as possible to solve it.
 - ▲ After-sales service includes not only equipment repair and maintenance, but also dedicated support for process technology. Our technicians can conduct on-site technical training and provide a full set of screen printing process technology, information and equipment solutions.
 - ▲ Professional technicians visit from time to time to track the usage of user equipment.
 - ▲ Repair and maintenance of screen printing equipment and auxiliary equipment.
 - ▲ Design and customize special product screen printing equipment and auxiliary equipment.

Corporate image





★ Company Honors

