


FCC TEST REPORT

Product Name: Automatic soap dispenser

Trademark:  惠高洁

Model Number: Ses11
Ses21, Ses22, Ses12, Ses13, Ses14, Ses15, Ses23, Ses24, Ses25,
Ses01, Ses02, Ses03, Ses04, Ses05, Ses06

Prepared For: shenzhen Smarlean Hygiene Co., Ltd

Address: Room 401, Floor 4, Hua fan Industrial park, Tongsheng community,
Dalang street, Longhua district, Shenzhen, China

Manufacturer: shenzhen Smarlean Hygiene Co., Ltd

Address: Room 401, Floor 4, Hua fan Industrial park, Tongsheng community,
Dalang street, Longhua district, Shenzhen, China

Prepared By: Shenzhen BCTC Testing Co., Ltd.

Address: BCTC Building & 1-2F, East of B Building, Pengzhou Industrial,
Fuyuan 1st Road, Qiaotou Community, Fuyong Street, Bao'an
District, Shenzhen, China

Sample Received Date: Jun. 15, 2020

Sample tested Date: Jun. 15, 2020 to Jun. 19, 2020

Issue Date: Jun. 19, 2020

Report No.: BCTC2006001080E

Test Standards 47 CFR FCC Part 15 Subpart B

Test Results PASS

Compiled by:



Icey Chen

Reviewed by:



Eric Yang

Approved by:


Zero Zhou/Manager

The test report is effective only with both signature and specialized stamp. This result(s) shown in this report refer only to the sample(s) tested. Without written approval of Shenzhen BCTC Testing Co., Ltd, this report can't be reproduced except in full. The tested sample(s) and the sample information are provided by the client.

TABLE OF CONTENT

Test Report Declaration	Page
1. VERSION.....	3
2. TEST SUMMARY.....	4
3. MEASUREMENT UNCERTAINTY.....	5
4. PRODUCT INFORMATION AND TEST SETUP	6
5. TEST FACILITY AND TEST INSTRUMENT USED.....	7
6. CONDUCTED EMISSION AT THE MAINS TERMINALS TEST	8
6.1 Block Diagram Of Test Setup	8
6.2 Limit.....	8
6.3 Test procedure	8
6.4 Test Result	9
7. RADIATION EMISSION TEST	11
7.1 Block Diagram Of Test Setup	11
7.2 Limit.....	11
7.3 Test Procedure	12
7.4 Test Result	13
8. EUT PHOTOGRAPHS	15

(Note: N/A means not applicable)

1. VERSION

Report No.	Issue Date	Description	Approved
BCTC2006001080E	Jun. 19, 2020	Original	Valid

2. TEST SUMMARY

The Product has been tested according to the following specifications:

Standard	Test Item	Test result
FCC 15.107	Conducted Emission	Pass
FCC 15.109	Radiated Emission	Pass

3. MEASUREMENT UNCERTAINTY

Where relevant, the following measurement uncertainty levels have been estimated for tests performed on the Product as specified in CISPR 16-4-2. This uncertainty represents an expanded uncertainty expressed at approximately the 95% confidence level using a coverage factor of $k=2$.

Test item	Value (dB)
Conducted Emission (150kHz-30MHz)	3.20
Radiated Emission(30MHz~1GHz)	4.80
Radiated Emission(1GHz~6GHz)	4.90

4. PRODUCT INFORMATION AND TEST SETUP

4.1 Product Information

Ratings: DC 6V from adapter
DC 6V from battery

Adapter Information: Manufacture: /
Model No.: WTA12-0601500-G
Input: AC 100-240V 50/60Hz 1A
Output: DC 6V 1.5A 9W

Model difference: All models are identical except for the appearance color, the test model is Ses11 and the test results are applicable to other tests.

4.2 Test Setup Configuration

See test photographs attached in EUT TEST SETUP PHOTOGRAPHS for the actual connections between Product and support equipment.

4.3 Support Equipment

No	Device Type	Brand	Model	Series No.	Data Cable	Power Cord
1.	ADAPTER	UGREEN	CD122	---	---	---

Notes:

1. All the equipment/cables were placed in the worst-case configuration to maximize the emission during the test.
2. Grounding was established in accordance with the manufacturer's requirements and conditions for the intended use.

4.4 Test Mode

Test item	Test Mode	Test Voltage
Conducted Emission (150KHz-30MHz) Class B	Working	DC 5V from adapter input AC 120V/60Hz*
Radiated mission(30MHz-1GHz) Class B	Working	DC 5V from adapter input AC 120V/60Hz*
	Working	DC 6V
All test mode were tested and passed, only Conducted Emissions, Radiated Emissions shows (*) is the worst case mode which were recorded in this report.		

5. TEST FACILITY AND TEST INSTRUMENT USED

5.1 Test Facility

All measurement facilities used to collect the measurement data are located at BCTC Building & 1-2F, East of B Building, Pengzhou Industrial, Fuyuan 1st Road, Qiaotou Community, Fuyong Street, Bao'an District, Shenzhen, China. The site and apparatus are constructed in conformance with the requirements of ANSI C63.4 and CISPR 16-1-1 other equivalent standards.

5.2 Test Instrument Used

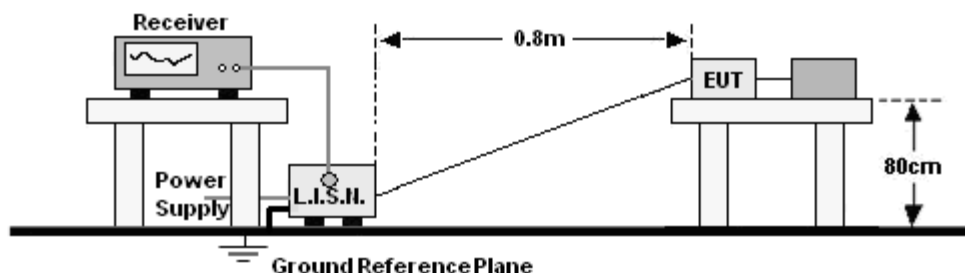
Conducted emission Test					
Equipment	Manufacturer	Model#	Serial#	Last Cal.	Next Cal.
Receiver	R&S	ESR3	102075	Jun. 08, 2020	Jun. 07, 2021
LISN	R&S	ENV216	101375	Jun. 04, 2020	Jun. 03, 2021
Software	Frad	EZ-EMC	EMC-CON 3A1	\	\

Radiated disturbance Test (966 chamber)					
Equipment	Manufacturer	Model#	Serial#	Last Cal.	Next Cal.
966 chamber	ChengYu	966 Room	966	Jun. 06, 2020	Jun. 05, 2021
Receiver	R&S	ESR3	102075	Jun. 08, 2020	Jun. 07, 2021
Receiver	R&S	ESRP	101154	Jun. 08, 2020	Jun. 07, 2021
Amplifier	Schwarzbeck	BBV9744	9744-0037	Jun. 04, 2020	Jun. 03, 2021
TRILOG Broadband Antenna	schwarzbeck	VULB 9163	VULB9163 -942	Jun. 04, 2020	Jun. 03, 2021
Horn Antenna	SCHWARZBECK	BBHA9120 D	1201	Jun. 08, 2020	Jun. 07, 2021
Amplifier	Schwarzbeck	BBV9718	9718-309	Jun. 10, 2020	Jun. 09, 2021
Software	Frad	EZ-EMC	FA-03A2 RE	\	\

6. CONDUCTED EMISSION AT THE MAINS TERMINALS TEST

6.1 Block Diagram Of Test Setup

For mains ports:



6.2 Limit

Limits for Class B devices

(MHz)	Limits dB(μV)	
	Quasi-peak	Average
0,15 to 0,50	66 to 56*	56 to 46*
0,50 to 5	56	46
5 to 30	60	50

Notes: 1. *Decreasing linearly with logarithm of frequency.

2. The lower limit shall apply at the transition frequencies.

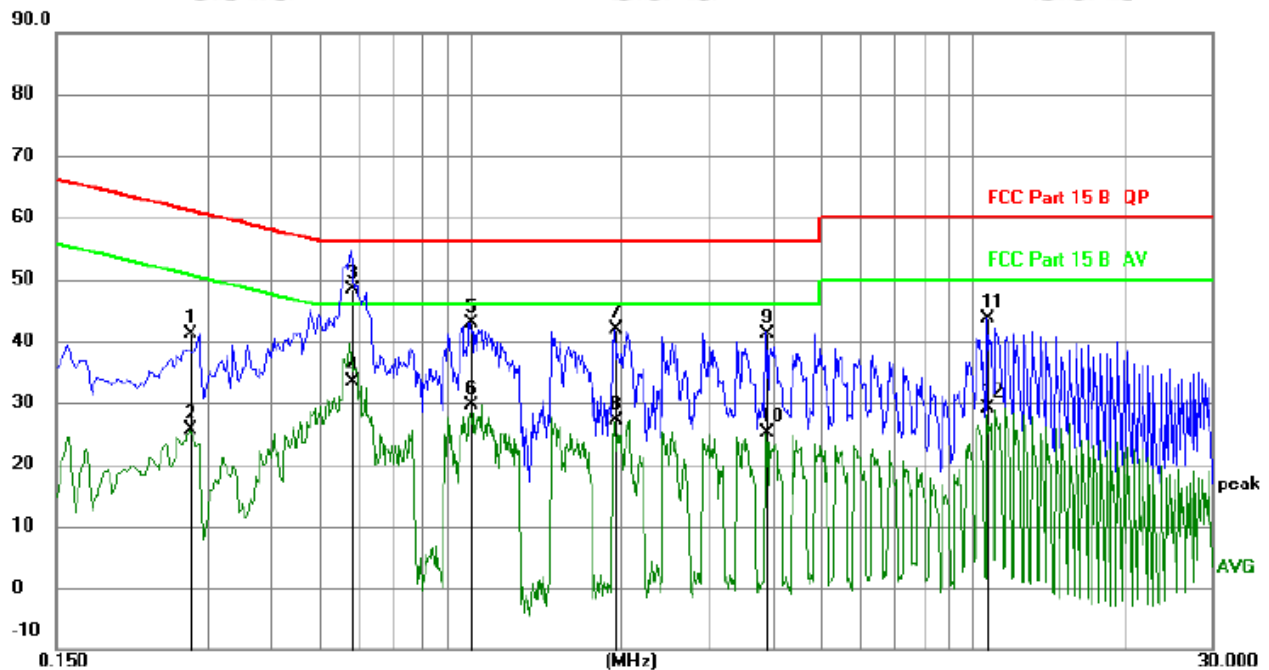
6.3 Test procedure

For mains ports:

- The Product was placed on a nonconductive table 0.8 m above the horizontal ground reference plane, and 0.4 m from the vertical ground reference plane, and connected to the main through Line Impedance Stability Network (L.I.S.N).
- The RBW of the receiver was set at 9 kHz in 150 kHz ~ 30MHz with Peak and AVG detector in Max Hold mode. Run the receiver's pre-scan to record the maximum disturbance generated from Product in all power lines in the full band.
- For each frequency whose maximum record was higher or close to limit, measure its QP and AVG values and record.

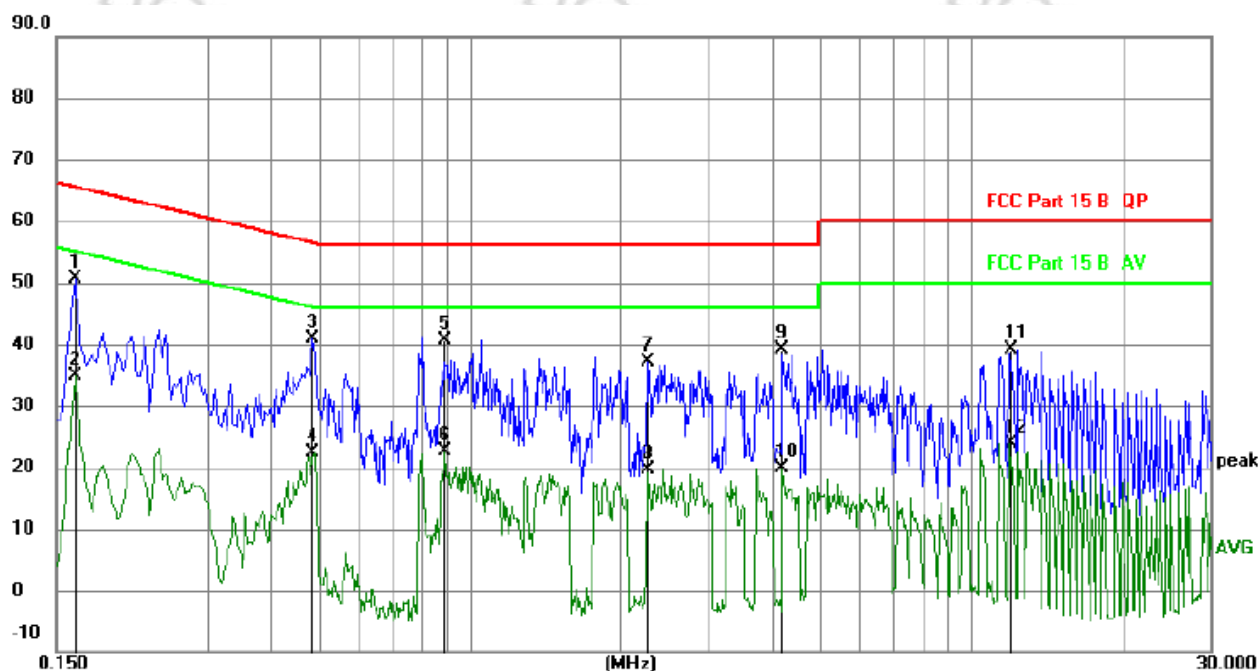
6.4 Test Result

Temperature:	26 °C	Relative Humidity:	54%
Pressure:	101kPa	Phase :	Line
Test Voltage :	DC 5V from adapter input AC 120V/60Hz	Test Mode:	Working



No.	Mk.	Freq. MHz	Reading Level	Correct Factor dB	Measure- ment dBuV	Limit dBuV	Over dB	Detector	Comment
1		0.2760	31.60	9.55	41.15	60.94	-19.79	QP	
2		0.2760	15.96	9.55	25.51	50.94	-25.43	AVG	
3	*	0.5810	38.54	9.92	48.46	56.00	-7.54	QP	
4		0.5810	23.49	9.92	33.41	46.00	-12.59	AVG	
5		1.0005	33.37	9.57	42.94	56.00	-13.06	QP	
6		1.0005	19.94	9.57	29.51	46.00	-16.49	AVG	
7		1.9455	32.37	9.59	41.96	56.00	-14.04	QP	
8		1.9455	17.64	9.59	27.23	46.00	-18.77	AVG	
9		3.8895	31.43	9.72	41.15	56.00	-14.85	QP	
10		3.8895	15.42	9.72	25.14	46.00	-20.86	AVG	
11		10.7070	33.91	9.69	43.60	60.00	-16.40	QP	
12		10.7070	19.36	9.69	29.05	50.00	-20.95	AVG	

Temperature:	26 °C	Relative Humidity:	54%
Pressure:	101kPa	Phase :	Neutral
Test Voltage :	DC 5V from adapter input AC 120V/60Hz	Test Mode:	Working



No.	Mk.	Freq. MHz	Reading Level dB	Correct Factor dB	Measure- ment dBuV	Limit dBuV	Over dB	Detector	Comment
1	*	0.1633	41.23	9.50	50.73	65.29	-14.56	QP	
2		0.1633	25.38	9.50	34.88	55.29	-20.41	AVG	
3		0.4863	31.22	9.58	40.80	56.23	-15.43	QP	
4		0.4863	12.90	9.58	22.48	46.23	-23.75	AVG	
5		0.8944	31.03	9.60	40.63	56.00	-15.37	QP	
6		0.8944	13.08	9.60	22.68	46.00	-23.32	AVG	
7		2.2606	27.54	9.61	37.15	56.00	-18.85	QP	
8		2.2606	9.90	9.61	19.51	46.00	-26.49	AVG	
9		4.2018	29.27	9.74	39.01	56.00	-16.99	QP	
10		4.2018	10.19	9.74	19.93	46.00	-26.07	AVG	
11		11.9328	29.32	9.69	39.01	60.00	-20.99	QP	
12		11.9328	14.29	9.69	23.98	50.00	-26.02	AVG	

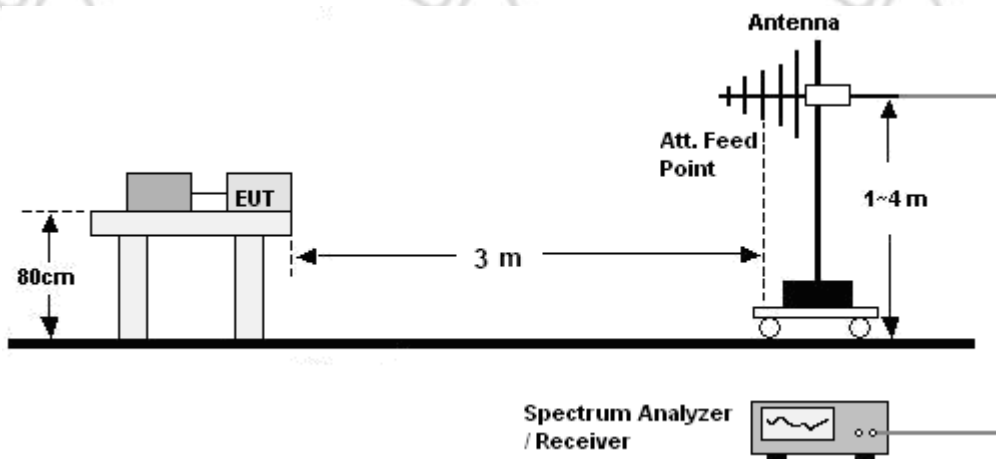
Remark:

1. All readings are Quasi-Peak and Average values.
2. Factor = Insertion Loss + Cable Loss.

7. RADIATION EMISSION TEST

7.1 Block Diagram Of Test Setup

30MHz ~ 1GHz:



7.2 Limit

Limits for Class B devices

Frequency (MHz)	limits at 3m dB(μV/m)		
	QP Detector	PK Detector	AV Detector
30-88	40.0	--	--
88-216	43.5	--	--
216-960	46.0	--	--
960 to 1000	54.0	--	--
Above 1000	--	74.0	54.0

Note: The lower limit shall apply at the transition frequencies.

7.3 Test Procedure

30MHz ~ 1GHz:

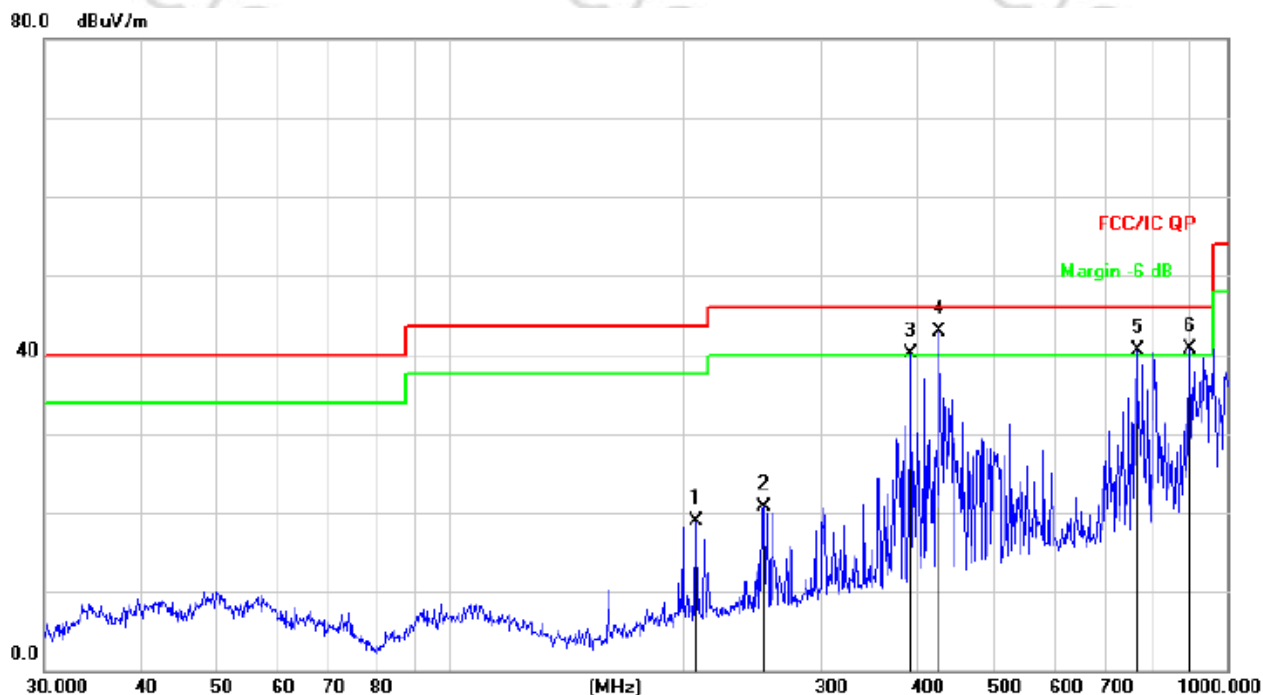
- a. The Product was placed on the nonconductive turntable 0.8 m above the ground at a chamber.
- b. Set the spectrum analyzer/receiver in Peak detector, Max Hold mode, and 120 kHz RBW. Record the maximum field strength of all the pre-scan process in the full band when the antenna is varied between 1~4 m in both horizontal and vertical, and the turntable is rotated from 0 to 360 degrees.
- c. For each frequency whose maximum record was higher or close to limit, measure its QP value: vary the antenna's height and rotate the turntable from 0 to 360 degrees to find the height and degree where Product radiated the maximum emission, then set the test frequency analyzer/receiver to QP Detector and specified bandwidth with Maximum Hold Mode, and record the maximum value.

Remark:

The highest frequency of the internal sources of the EUT is less than 108 MHz, so the measurement shall only be made up to 1 GHz.

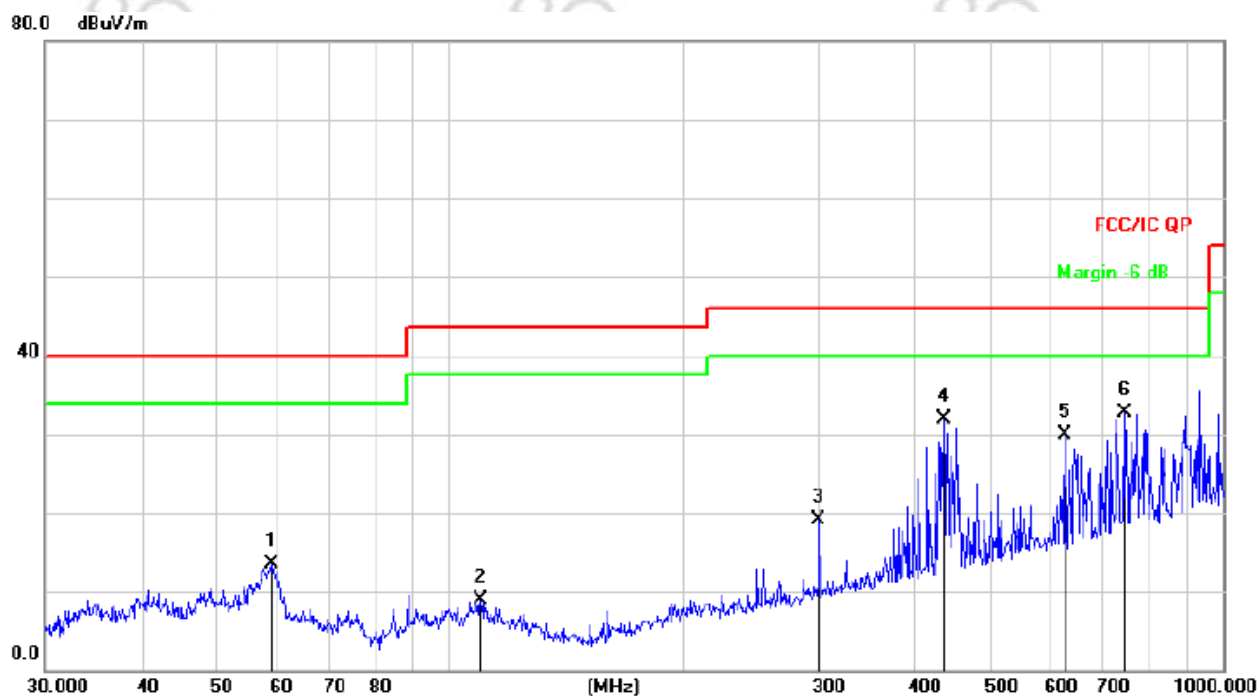
7.4 Test Result

Temperature:	26 °C	Relative Humidity:	54%
Pressure:	101kPa	Phase :	Horizontal
Test Voltage :	DC 5V from adapter input AC 120V/60Hz	Test Mode:	The worst mode



No.	Mk.	Freq.	Reading Level	Correct Factor	Measurement	Limit	Over	Antenna Height	Table Degree	
		MHz	dBuV	dB	dBuV/m	dB/m	dB	cm	degree	Comment
1		207.1226	35.12	-16.14	18.98	43.50	-24.52	QP		
2		253.8367	35.66	-15.03	20.63	46.00	-25.37	QP		
3	!	392.0951	51.46	-11.27	40.19	46.00	-5.81	QP		
4	*	426.5210	53.33	-10.50	42.83	46.00	-3.17	QP		
5	!	766.0571	44.63	-4.12	40.51	46.00	-5.49	QP		
6	!	896.9965	42.31	-1.56	40.75	46.00	-5.25	QP		

Temperature:	26 °C	Relative Humidity:	54%
Pressure:	101kPa	Phase :	Vertical
Test Voltage :	DC 5V from adapter input AC 120V/60Hz	Test Mode:	The worst mode



No.	Mk.	Freq.	Reading Level	Correct Factor	Measurement	Limit	Over	Antenna Height	Table Degree	
		MHz	dBuV	dB	dBuV/m	dB/m	dB	cm	degree	Comment
1		58.8185	29.22	-15.78	13.44	40.00	-26.56	QP		
2		109.7960	25.73	-16.91	8.82	43.50	-34.68	QP		
3		300.3672	32.63	-13.59	19.04	46.00	-26.96	QP		
4		435.5898	42.25	-10.29	31.96	46.00	-14.04	QP		
5		625.0780	36.63	-6.67	29.96	46.00	-16.04	QP		
6	*	744.8661	37.17	-4.42	32.75	46.00	-13.25	QP		

Remark:

Factor = Antenna Factor + Cable Loss – Pre-amplifier.

8. EUT PHOTOGRAPHS

EUT Photo 1



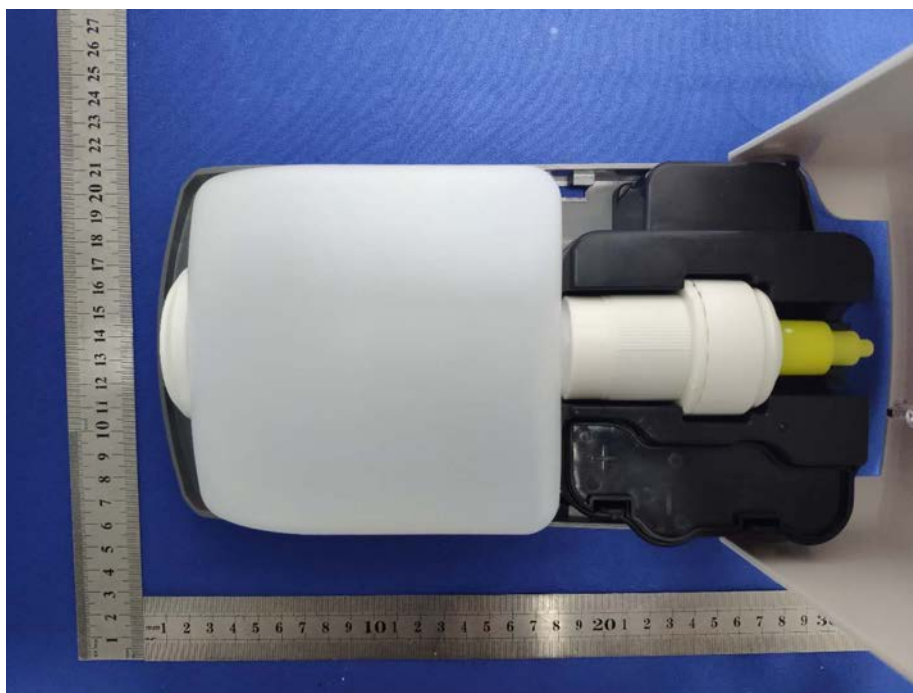
EUT Photo 2



EUT Photo 3



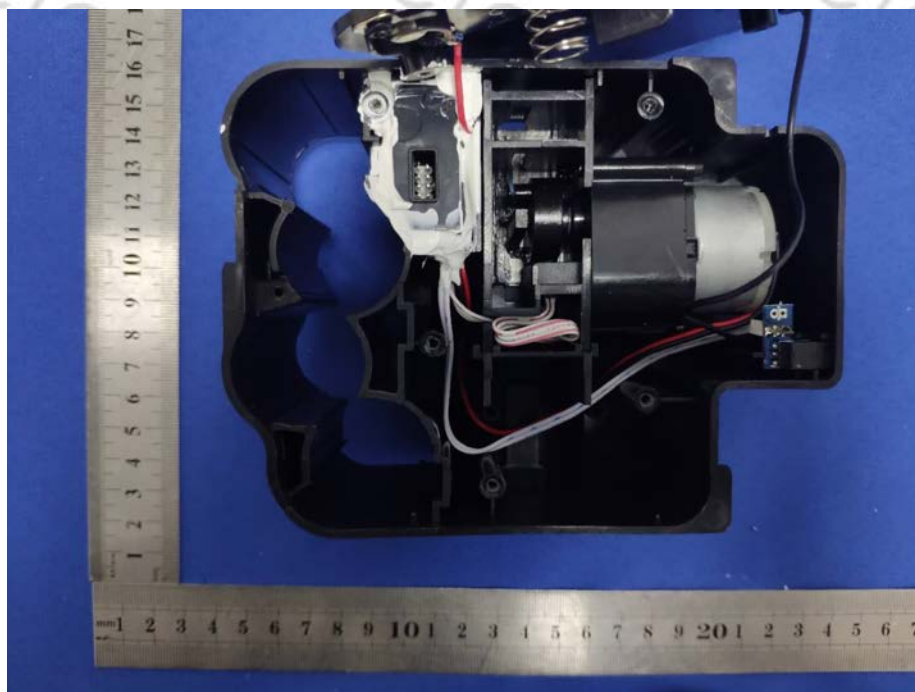
EUT Photo 4



EUT Photo 5



EUT Photo 6



9 EUT TEST SETUP PHOTOGRAPHS

CE



RE



***** END OF REPORT *****