

Allen-Bradley 6180W-15BS2KH

1500W VersaView Industrial Workstation



Limited Availability
Used and in Excellent Condition

Open Web Page

<https://www.artisanng.com/87011-1>

All trademarks, brandnames, and brands appearing herein are the property of their respective owners.



Your **definitive** source
for quality pre-owned
equipment.

Artisan Technology Group

(217) 352-9330 | sales@artisanng.com | artisanng.com

- Critical and expedited services
- In stock / Ready-to-ship
- We buy your excess, underutilized, and idle equipment
- Full-service, independent repair center

Artisan Scientific Corporation dba Artisan Technology Group is not an affiliate, representative, or authorized distributor for any manufacturer listed herein.

Product Profile

VersaView™ 1200W and 1500W Industrial Workstations

Bulletin 6180W

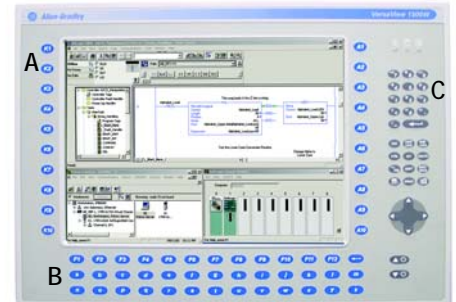
With the Allen-Bradley VersaView 1200W and 1500W industrial workstations, users now can run visual interface, maintenance, control, and basic information applications all from one machine. Use the 1200W or 1500W computer with its integrated keypad to control machinery or a process; display information necessary to repair, maintain, or start up a process; and gather basic production information for making informed business decisions.

The VersaView 1200W and 1500W industrial workstations are available in standard or performance models. The standard model provides the computing power necessary for most visual interface, maintenance, or basic information applications. However, if more computing power is needed, use a performance model.

Advantages

Like all VersaView products, the VersaView 1200W and 1500W industrial workstations include the following tools and services to provide reliable computing power on the factory floor:

- Application interoperability
- Technology change management
- Rugged yet cost-effective platforms for today's demanding factory environments
- Factory system recovery CD
- Unit level immediate exchange program
- Complete package for immediate startup
- Global sales and support
- Quick delivery



System Components

A	36 (1200W)/32 (1500W) function keys with software utility that allows function key programming; 1200W function keys are I/O capable via optional card
B	Full Alpha Input
C	Numeric Keypad
D	Parallel Port
E	Serial Port
F	2 USB Ports
G	10/100 M Ethernet Port
H	Audio Port
I	VGA – Video Display Cable

VersaView 1200W and 1500W Selection Table

Catalog Number ^{*1}	12" Display	15" Display	Resistive Touch Screen	DC Power	Standard: 2.0 GHz Pentium IV Celeron 256 MB RAM 80 GB HDD CD-ROM Drive	Performance: 2.0 GHz Pentium IV 512 MB RAM 80 GB HDD DVD/CD-RW Drive	HMI Software Image (non-activated) ^{*2}
6180W-12BPXPH	X		X			X	X
6180W-12KPXPH	X					X	X
6180W-12BPXPHDC	X		X	X		X	X
6180W-12KPXPHDC	X			X		X	X
6180W-12BSXPH	X		X		X		X
6180W-12KPXPH	X				X	X	X
6180W-15BPXPH		X	X			X	X
6180W-15KPXPH		X				X	X
6180W-15BPXPHDC		X	X	X		X	X
6180W-15BSXPH		X	X		X		X
6180W-15KSXPH		X			X		X
6180W-7PXPH						X	X
6180W-7PXPXPHDC				X		X	X

Notes: ^{*1} Replace "XP" with "2K" for a Windows 2000 image.

^{*2} Separate software activation and license purchase required.

VersaView 1200W and 1500W Specifications

	1200W Industrial Workstation	1500W Industrial Workstation
Display		
Type	Color TFT	Color TFT
Resolution	800 x 600, 24-bit color	1024 x 768, 24 bit color
System Components		
Expansion Slots	2 half length PCI 1 full length ISA	2 half length PCI 2 full length ISA
Electrical		
Input Voltage, DC	19...32V DC	
Input Voltage, AC	90...264 V AC, autoswitching	
Line Frequency	47...63 Hz	
Power Consumption, AC	160 VA (1.6...0.67A)	
Environmental		
Operating Temperature	0...50°C	
Storage Temperature	-20...60°C	
Humidity	5...90% without condensation	
Vibration – Operating	1.0g peak	
Vibration – Non-Operating	2.0g peak	
Shock – Operating	15g (1/2 sine, 11 msec)	
Shock – Non-Operating	30g (1/2 sine, 11 msec)	
Ratings	NEMA 12/13/4/4X, IP66	
Certifications	C-UL certified, UL listed, CE marked, C-Tick	
Mechanical		
Weight	16.3 kg (35.94 lbs)	18.5 kg (40.7 lb)
Dimensions Overall (H x W x D)	311 mm x 483 mm x 400 mm (12.24 x 19.02 x 15.75 in)	354 x 482 x 225 mm (14 x 19 x 8.86 in)
Cutout Dimensions (H x W)	279 x 450 mm (10.98 x 17.72 in)	326.4 x 429.3 mm (12.85 x 16.9 in)

www.rockwellautomation.com

Corporate Headquarters

Rockwell Automation, 777 East Wisconsin Avenue, Suite 1400, Milwaukee, WI, 53202-5302 USA, Tel: (1) 414.212.5200, Fax: (1) 414.212.5201

Headquarters for Allen-Bradley Products, Rockwell Software Products and Global Manufacturing Solutions

Americas: Rockwell Automation, 1201 South Second Street, Milwaukee, WI 53204-2496 USA, Tel: (1) 414.382.2000, Fax: (1) 414.382.4444

Europe/Middle East/Africa: Rockwell Automation SA/NV, Vorstlaan/Boulevard du Souverain 36, 1170 Brussels, Belgium, Tel: (32) 2 663 0600, Fax: (32) 2 663 0640

Asia Pacific: Rockwell Automation, 27/F Citicorp Centre, 18 Whitfield Road, Causeway Bay, Hong Kong, Tel: (852) 2887 4788, Fax: (852) 2508 1846

Headquarters for Dodge and Reliance Electric Products

Americas: Rockwell Automation, 6040 Ponders Court, Greenville, SC 29615-4617 USA, Tel: (1) 864.297.4800, Fax: (1) 864.281.2433

Europe/Middle East/Africa: Rockwell Automation, Brühlstraße 22, D-74834 Elztal-Dallau, Germany, Tel: (49) 6261 9410, Fax: (49) 6261 17741

Asia Pacific: Rockwell Automation, 55 Newton Road, #11-01/02 Revenue House, Singapore 307987, Tel: (65) 6356-9077, Fax: (65) 6356-9011

Publication 6180W-PP001F-EN-P—May 2004

Copyright © 2004 Rockwell Automation, Inc.. All rights reserved. Printed in USA.

Artisan Technology Group is an independent supplier of quality pre-owned equipment

Gold-standard solutions

Extend the life of your critical industrial, commercial, and military systems with our superior service and support.

We buy equipment

Planning to upgrade your current equipment? Have surplus equipment taking up shelf space? We'll give it a new home.

Learn more!

Visit us at artisanng.com for more info on price quotes, drivers, technical specifications, manuals, and documentation.

Artisan Scientific Corporation dba Artisan Technology Group is not an affiliate, representative, or authorized distributor for any manufacturer listed herein.

We're here to make your life easier. How can we help you today?

(217) 352-9330 | sales@artisanng.com | artisanng.com

