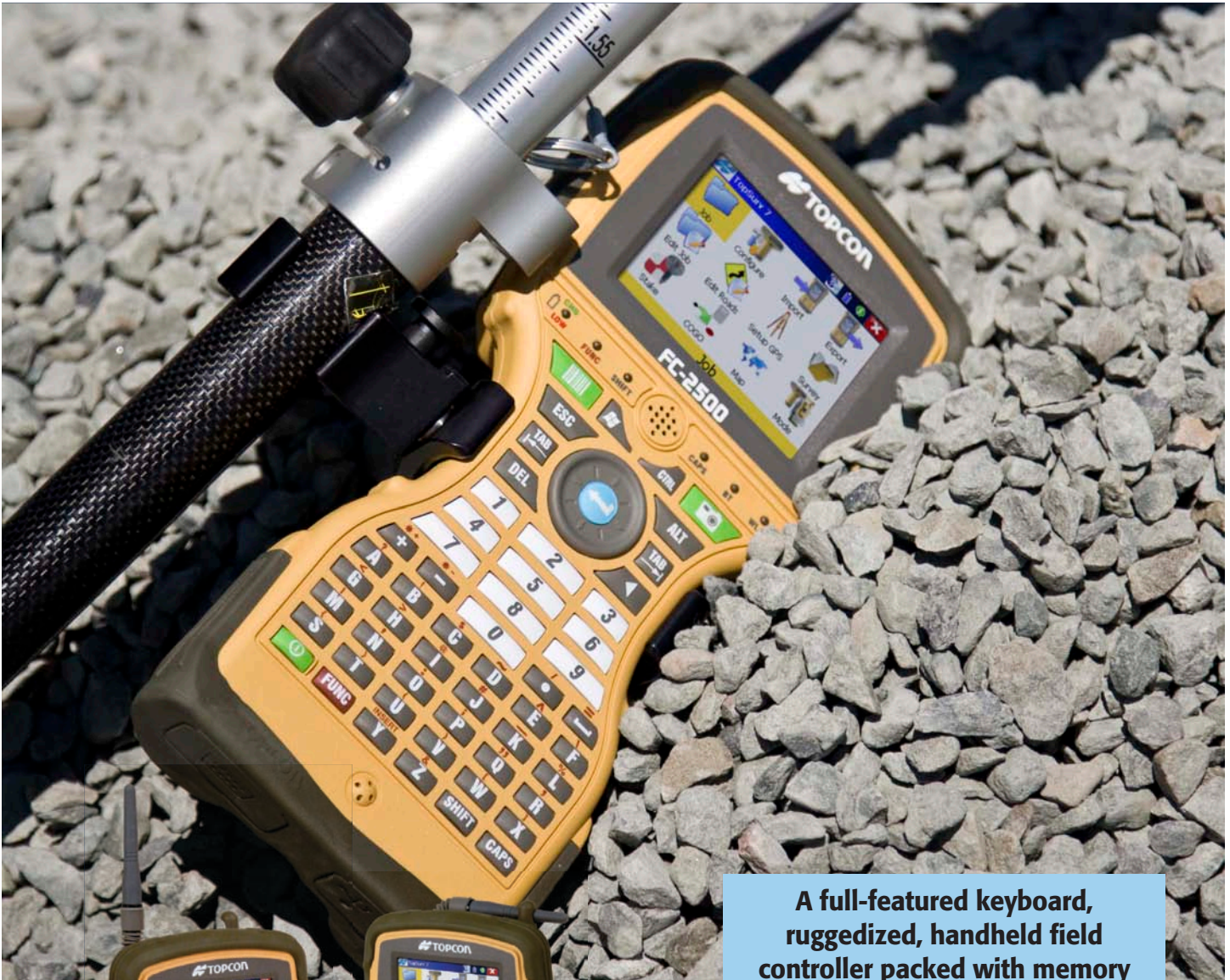


# FC-2500

## Rugged, Alphanumeric Field Controller



**A full-featured keyboard, ruggedized, handheld field controller packed with memory and built-in 5 megapixel camera.**

- 624MHz XSCALE PROCESSOR
- 5.17 MEGAPIXEL CAMERA AND BAR CODE READER
- 256MB RAM, 2GB ROM
- BUILT-IN WIRELESS BLUETOOTH® AND WiFi CONNECTIVITY
- WINDOWS® CE.NET 5.0 OPERATING SYSTEM
- ADD-ON ROBOTIC RADIO DESIGN
- 55 KEY ALPHANUMERIC KEYBOARD, PLUS JOYSTICK
- 8 WAY DIRECTIONAL ARROW AND ENTER KEY
- EASY ACCESS USB FLASH DRIVE
- ACCESSIBLE, RECHARGEABLE AND HOT SWAPPABLE BATTERIES

## 624MHz XScale Processor with Windows® CE.NET 5.0 Operating System

Windows CE.NET operating system provides a modern operating environment and added expandability with other application software. The fast 624MHz processor leads in performance and reliability.

### Built-in 5 Megapixel Camera

That's right, a full 5.17 megapixel camera with auto focus picture taking ability. That is why we built-in 2GB of RAM. The camera has an auto-focus function and a flash illumination. Store photos in BMP or JPG format, and if you fill the memory, simply use a common USB flash drive to offload images.

### Extra Memory

The FC-2500 is loaded with all the memory you should need. Primary program ram is 256MB. In addition, it includes 2GB Flash storage memory. We want you to use the camera and know those file sizes can add up fast.

### Bluetooth® and WiFi

Bluetooth and WiFi come standard. No need for expensive upgrades or CF cards. We built these into the standard unit. We provide a way to turn them off as well to conserve battery power when you do not need WiFi or Bluetooth. With Topcon's other advanced systems coming to market with built-in WiFi, this form of data exchange will become more and more important. Use your device in a typical Hotspot to surf the web, check weather, e-mail files back to the office, etc.

### Bar Code Reader

The digital camera doubles as a bar code reader. Laser pointers identify the bar code and scan that information directly into the text field you have your cursor placed. Imagine your stakeout locations having a bar code attached to the stake. Simply place your blinking cursor into the description or point number field of TopSURV and press the Bar Code scan button. The field will fill with the bar code information. There are so many possibilities for this function that we are sure our users will surprise us with unique applications.

### Windows® CE.NET 5.0

This operating platform is the most stable in today's platform offerings. Simple and familiar functionality leads to fast learning curves. It also allows higher resolution images to be processed.



**FC-2500**

Rugged, Alphanumeric Field Controller



### FC-2500 Add-on Robotic Radio Design

The FC-2500 has an add-on connection on the back of the unit to control a spread spectrum radio for robotics communication. Use this connector and an RS-1 to have a cable-free radio connection to the Topcon robotic instruments. Additional packs may be possible in the future.



### Alphanumeric Keyboard

Finally a 55 key alphanumeric keyboard plus joystick unit that can control the Robotic systems. We know that land surveyors typically prefer an alphanumeric keyboard data collector. This FC-2500 can handle the robotic radio as an expansion slot radio.



### USB Flash Drive

Use the USB mini port as both a Host and Client. This On-The-Go (OTG) functionality allows for expanded memory and easy file transfer through USB flash drives or ActiveSync connection. This design also provides rugged protection. The FC-2500 can not be compromised by opening a card door or flap. The entire unit is sealed and submersible.



### Removable, Hot Swappable Battery Packs

With two NiMH batteries loaded standard with 2500mAh each, battery performance can be as high as 50 hours. The typical power drain from a Bluetooth connection to a GPS receiver will run for 24 hours. Don't ever worry about overcharging, the FC-2500 has internal temperature monitors to prevent any unexpected high temperature issues.

### Waterproof and Rugged

The FC-2500 is rated at IP-67, which means it can be submersed in water. The unit also has a 4 foot drop proof rating.



**Rugged by design! A full-featured keyboard, ruggedized, handheld field controller packed with memory and built-in 5 megapixel camera.**



**Alphanumeric, Ruggedized Design**

If you are looking for an alphanumeric controller that provides big-time results, look no further than Topcon's FC-2500. The FC-2500 field controller incorporates the graphical Windows® CE.NET 5.0 operating system on a crisp, bright, color touch screen display that makes your field data come alive. This powerful operating system, combined with the versatility of USB jump drive removable media for data storage and transfer.

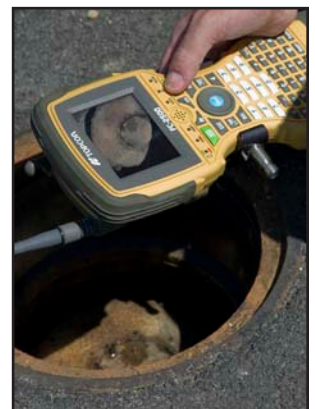
*Glove and weather friendly ergonomics.*



**5.17 Megapixel Camera**

Capture Reality in yet an additional device from Topcon. Topcon understands that a picture is worth more than a thousand words. This highly advanced camera can be used to associate photos with stored TopSURV points as Photo Notes. For every topo shot, as photo note can be stored.

*Photograph monuments with built-in camera.*



## The Leader in Positioning Technology...

Topcon offers positioning products that deliver unparalleled site-wide performance and integration. Topcon's history of technological advances and our reputation for superior reliability means there's no other company positioned to provide you with a better "Total Positioning Solution."

From survey to inspection, Topcon dealers throughout the world provide innovative technology that gives surveyors, civil engineers, contractors, equipment owners, and operators the competitive edge by addressing such critical issues as increasing profits, quality craftsmanship, improving productivity, lowering operating costs, and enhancing jobsite safety.

Full positioning integration field-to-finish: That's the goal of Topcon. When it's time for you to step up to the next level, it's time to turn to Topcon.

## The Leader in Customer Satisfaction...

To ensure that your Topcon product maintains peak performance, your local Topcon dealer offers factory trained and certified service technicians. If service isn't available in your area, our factory offers a repair and return policy second to none.

### Offices Worldwide

#### TOPCON CORPORATION

75-1 Hasunuma-cho, Itabashi-ku • Tokyo 174-8580, Japan  
Phone: 3-3558-2520 • Fax: 3-3960-4214 • www.topcon.co.jp

#### Topcon Europe Positioning B.V.

Essebaan 11, 2908 LJ Capelle a/d IJssel • THE NETHERLANDS  
Phone: 010-4585077 • Fax: 010-4585045 • www.topconeurope.com

#### Topcon Corporation Beijing Office

Block A No.9, Kangding Street, Beijing Economic Technological Development Area, Beijing 100176 • CHINA  
Tel: +86-10-6780-2799 • Fax: +86-10-6780-2790



### Topcon Positioning Systems, Inc.

7400 National Drive  
Livermore, CA 94550  
www.topconpositioning.com



Specifications subject to change without notice

©2009 Topcon Corporation All rights reserved.  
P/N: 7010-2009 Rev. B Printed in U.S.A. 12/09

## FC-2500 Specifications

General Specifications	
FC-2500	
Microprocessor	XScale PXA 270
Processor Speed	624 MHz
Operating System	CE.NET 5.0
Memory	256MB SDRAM 2GB System Flash
Display	
Display Resolution	320 x 240 QVGA
Type	3.52 in. TFT Color LCD
Light	LED Back Light
Touch Panel	Amorphous Silicon Active Matrix AD-TFT Color Display
Key-Board	55 Keys (Power Key Included)
LED	6 LED Indicators
Interface	RS-232C (D-Sub 9pin) Mini USB 2.0 A/B USB OTG Host and Client
Radio	Radio Adapter Included
Bluetooth® wireless technology	Bluetooth 1.2 Class II
External Power	12-18 VDC (36Watts)
Audio	Integrated Speaker and Microphone
WiFi	802.11 b/g
Water/Dust Resistance	IP67
Operating Temperature	-4°F to +122°F (-20°C to +50°C)
Storage Temperature	-4°F to +140°F (-20°C to +60°C)
Shock Resistance	4ft all faces, per MIL-STD 810F Method 516.51V
Operating Time	42 hours, Configuration Dependant
Charging Time	Approx. 3 hours
Dual Batteries	Hot-swappable, Li-ion Rechargeable, Smart battery System
Dimensions	10.85in x 5.34in x 2.19in
Screen Dimensions	2.89 in. x 2.19 in.
Weight	2.3 lbs. with dual batteries 2.42 lbs. with RS-1
RoHS Compliant	Yes
Available Radio Packs	RS-1 (2.4Ghz SpSp radio)
Camera Specifications: Rugged True-Camera-System	
5.17 megapixel color CMOS Sensor	5.17 mega pixel (4MP Processed) Auto-focus, Shutter, Aperture and Illumination
Image Capture Resolutions	QSXGA: 2048 x 1944, SXGA: 1280 x 960 VGA: 640 x 480, HF: 320 x 200
Regulatory	FCC Part 15 • CE • IC • RoHS Compliant • WEEE • C-tick • EU Battery Directive

## TopSURV Field Controller Software

Combine the power of this FC-2500 controller with TopSURV

TopSURV list of features:

- Large Graphical User Interface (GUI)
- Intuitive User Interface
- Graphical Stakeout
- Map View data collection
- Fast job management and storage
- Single Source Solution
- Advanced Roding available
- Unique Photo Note support
- Available for Windows® PC, Windows CE, Windows Mobile®, handhelds or on-board



Your local Authorized Topcon dealer is:

The Bluetooth® word mark and logos are registered trademarks owned by Bluetooth SIG, Inc. and any use of such marks by Topcon is under license. Other trademarks and trade names are those of their respective owners.