



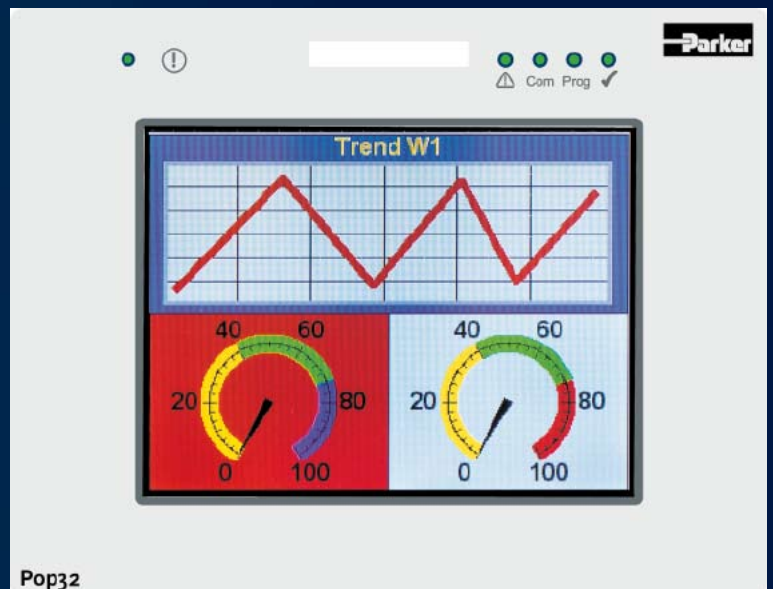
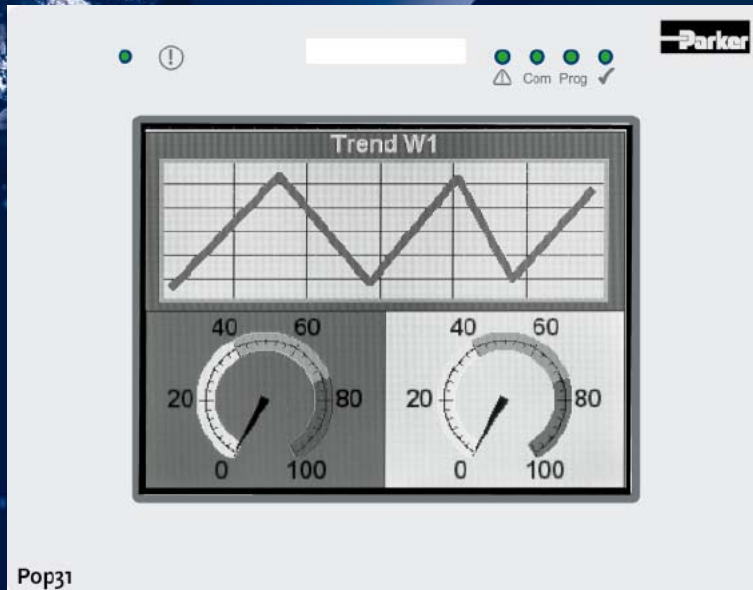
# Pop

## Parker operator panels

Catalogue: 192-081011 N3 / GB  
Version 3, July 2006







## Automation Control and Monitoring

# Parker Operator Panels

Parker supplies operator panels for all text and graphics applications in industrial environments. Features common to all versions include:

- Proven capability
- Extended functionality
- High reliability
- Ease of operation
- Excellent price-performance ratio
- Long life.

Text can be saved in multiple languages and used throughout the full range of Pop units.

The family of Pop operator panels extends from simple monochrome text and graphics panels (Pop12) to full-colour TFT touch screen displays (Pop32). Parker offers a wide choice of panels with a range of display sizes, numbers of function keys, LEDs, recipe memories, event lists and alarm lists. This means that panels are available to meet a wide variety of requirements. In addition to the standard RS232 and RS485 interfaces, the following optional field bus modules are available:

- Profibus DP
- CANopen
- DeviceNET
- Interbus S

Operator panels from the Pop series are all backlit, making them ideal for use in situations with poor lighting.

Versions are available with an IP65 protection rating to extend the range of industrial applications in which Pop panels may be used.

Along with Pop operating terminals, Parker also provides a software package called 'Pop Designer'. This software can be used with all panels whether for text and graphics displays or touch panels. Working with more than one type of operating terminal is made considerably easier due to compatibility throughout the range.

## Parker Operator Panels are Easily Programmable

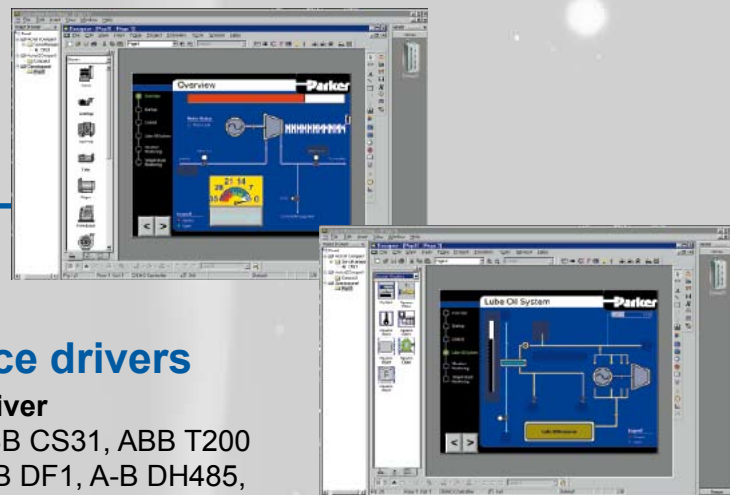
### Pop-Designer software for Windows

Integrated applications programming for Pop panels and Compax3 servo controllers is made possible with the GMS Global Machine Shop and Pop Designer

## Interfaces to the World of Automation

Pop panels are especially well suited for communicating with Parker automation equipment, particularly the Compax3 intelligent servo controller. The Global Machine Shop common programming environment makes simple, universal programming of Pop and Compax3 possible.

Pop panels also operate in conjunction with programmable logic controllers (PLCs) from various manufacturers.



### Available device drivers

**Manufacturer**

ABB:  
Allen Bradley:

Mitsubishi:  
Omron:  
Siemens:  
Télémécanique:  
Field busses:  
Parker EMD:

**Driver**

ABB CS31, ABB T200  
A-B DF1, A-B DH485,  
A-B Device Net, Device Net  
Mitsubishi FX, Mitsubishi A  
Omron C-Series  
S7 PPI, S7 MPI, DP S7 Profibus DP  
Unitelway, Telem TSX  
Profibus DP, CANopen, DeviceNET, Interbus S  
Compax, Compax3

Drivers for additional PLC products can be incorporated on request.



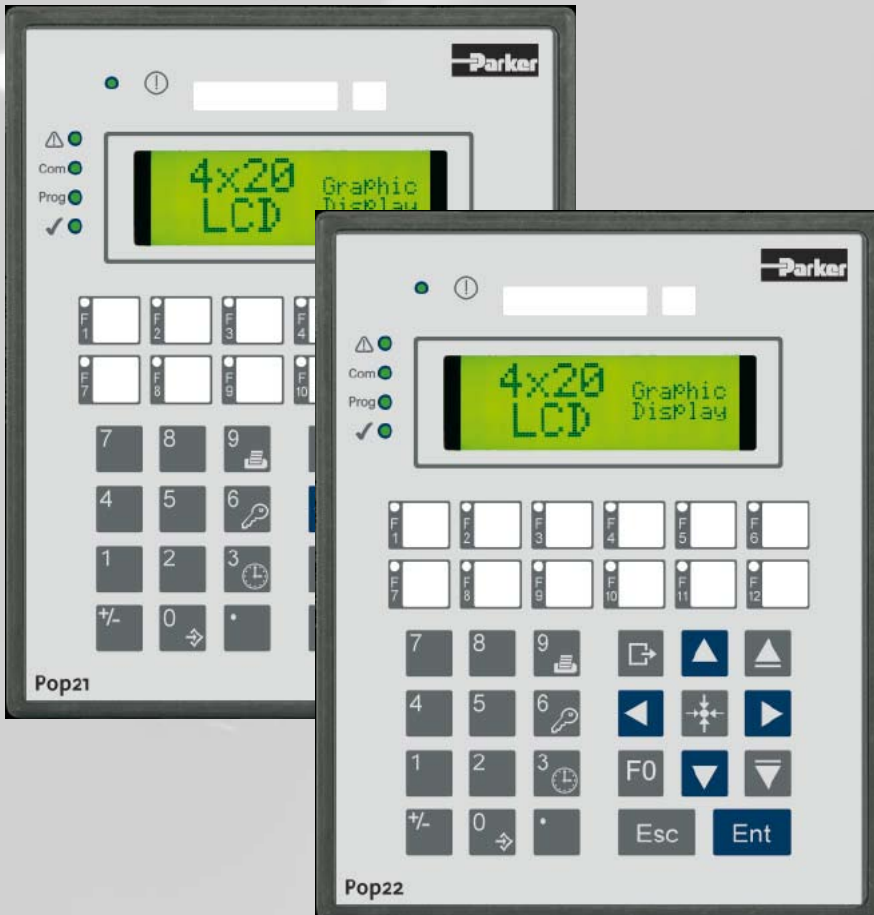
## Text and graphics-oriented Operating Systems



### Pop12

- 4 function keys with insertable labels
- 5 user LEDs
- Multilingual projects possible
- Connection to various bus systems
- RS-232, RS-422, RS-485, CL 20 mA
- 512 kB user program
- Dimensions in mm (wxhxd): 149x109x60
- Front plate depth: 5mm
- Monochrome **graphics display**
- 4 lines of 20 characters for text
- Downloadable font
- Scalable text

## Operator panels with Graphics Displays



### Pop21 / Pop22

- Monochrome graphics display
  - 4 lines of 20 characters for text
  - Downloadable font
  - Scalable text
  - 12 function keys with insertable labels
  - 13 user LEDs
  - Multilingual projects possible
  - Connection to various bus systems
  - Numeric keypad
  - RS-232, RS-422, RS-485, CL 20 mA
  - 512 kB user program
  - 512 kB expanded memory
  - Dimensions in mm (wxhxd): 141x176x75
  - Front plate depth: 5mm
- ### Pop22
- 32 kB recipe memory
  - Event list for alarms
  - Real time clock, battery-backed

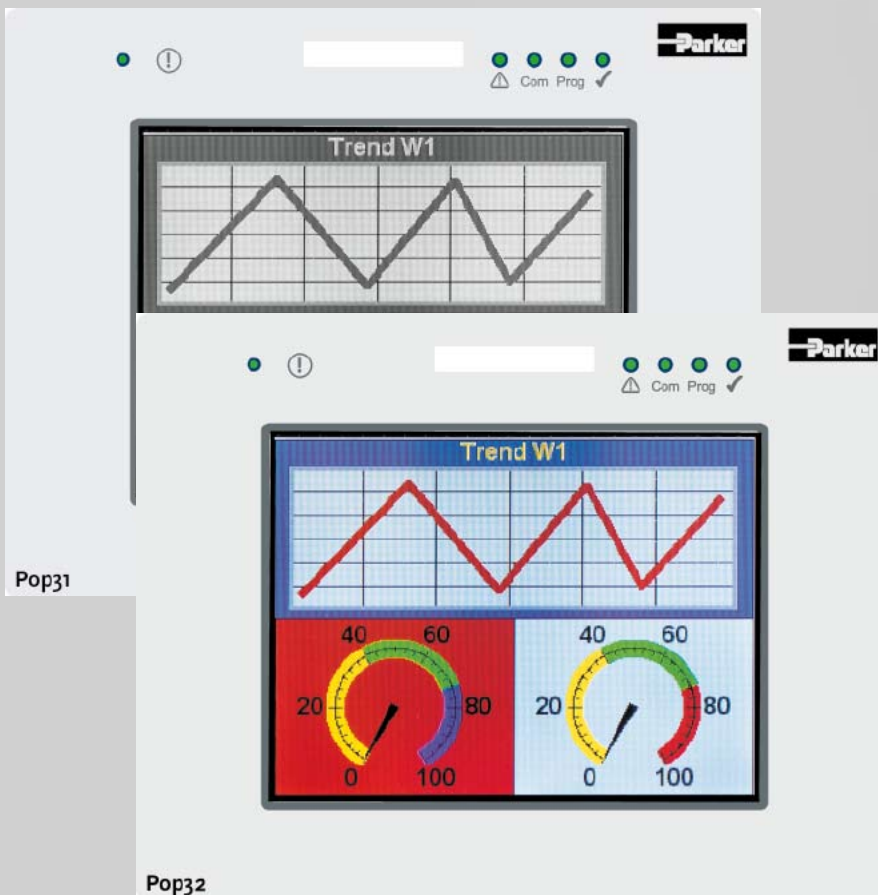
## Parker Operator Panel Pop



### Pop23

- Monochrome graphics display
- 8 lines of 40 characters for text
- Downloadable font
- Scalable text
- 23 function keys with insertable labels
- 24 user LEDs
- Multilingual projects possible
- Connection to various bus systems
- RS-232, RS-422, RS-485, CL 20 mA
- 512 kB user program
- 512 kB expanded memory
- Printer interface
- 16 kB recipe memory
- Event list for alarms
- Real time clock, battery-backed
- Dimensions in mm (wxhxd): 220x176x80
- Front plate depth: 5mm

## Full Graphics with Touch Screen



### Pop31 / Pop32

- 1/4 VGA display (320 x 240 Pixels), 5.6" diagonal
- 16 lines of 40 characters for text
- Resistive touch screen
- Can be connected to various bus systems
- Multilingual projects possible
- RS-232, RS-422, RS-485, CL 20 mA
- Printer interface
- 32 kB recipe memory
- Real time clock, battery-backed
- Event list for alarms
- Screensaver

### Pop31

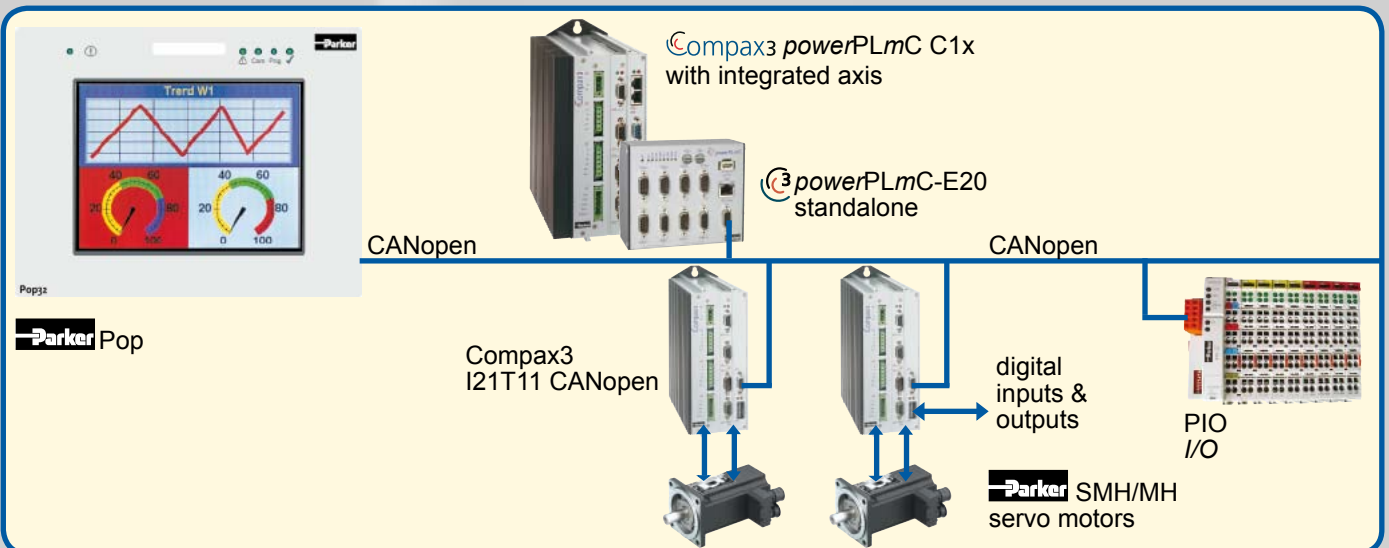
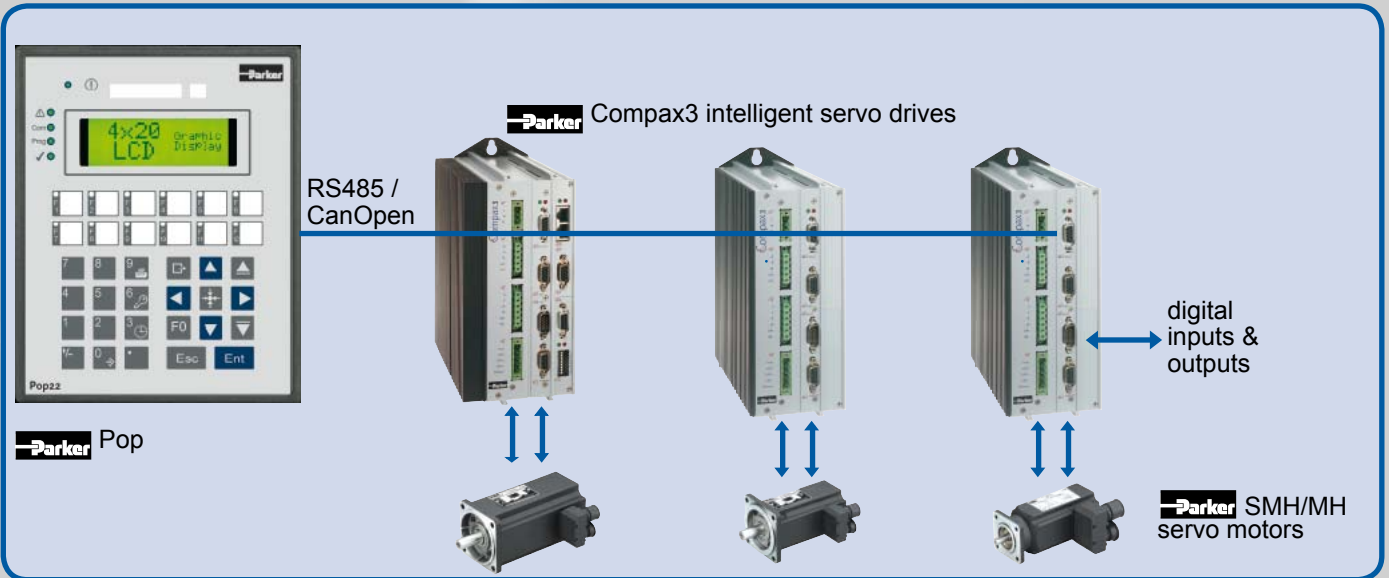
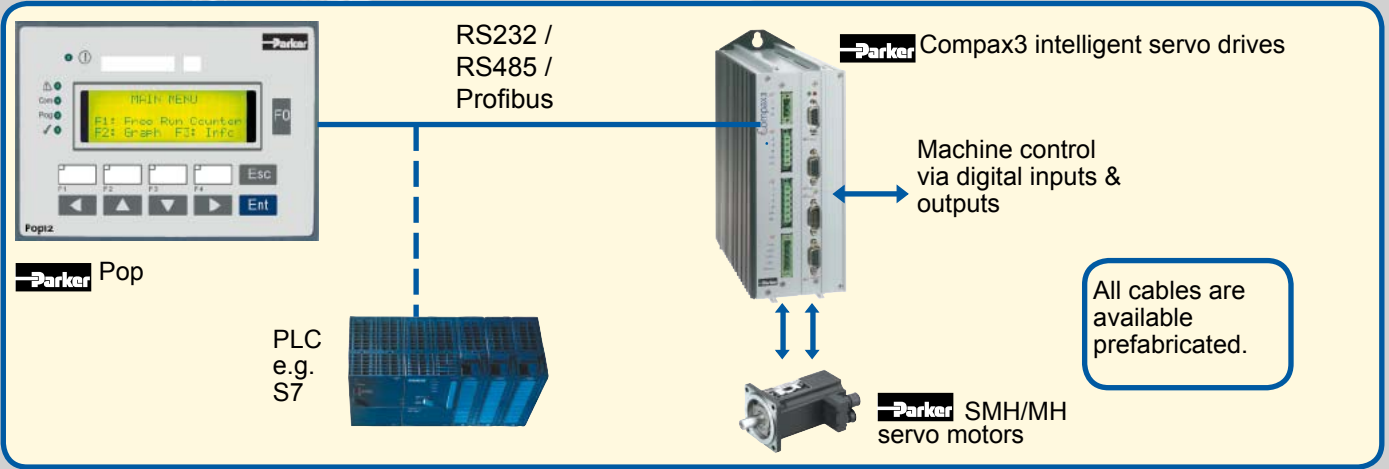
- Monochrome LCD display
- 8 MB flash memory on card
- Dimensions in mm (wxhxd): 187x147x79
- Front plate depth: 4mm

### Pop32

- STN color LCD display
- 8 MB flash memory on card
- Dimensions in mm (wxhxd): 187x147x90,4
- Front plate depth: 4mm

Parker Operator Panels offer flexible integration

Application examples with COMPAX and Compax3

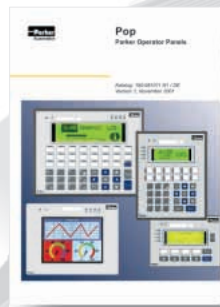




# - Your partner for automation

Would you like more information?  
We would be happy to send you our brochures and catalogs!  
Or call us and set up a meeting.

## Our product program:



Visualisation



Distributed Automation



Control Technology



Drive Technology  
Servo Drives / Stepper Drives



Motors / Gears



Direct Drive Technology  
Linear motors / Torque motors



Handling Actuators  
Cylinders / Actuators



Precision Actuators  
Screw Driven / Linear Motor Driven



Parker  
Electromechanical Automation

We reserve the right to make technical changes.  
The information contained in this manual corresponds to the current status at the time of printing.



**Parker Hannifin GmbH & Co.KG**  
Electromechanical Automation  
Robert-Bosch-Str. 22  
D-77656 Offenburg,  
Germany  
☎ +49 (0)781 509 0  
☎ +49 (0)781 509 98176  
Website: [www.parker-eme.com](http://www.parker-eme.com)  
e-mail: [sales.hauser@parker.com](mailto:sales.hauser@parker.com)

**Parker Hannifin S. p. A**  
Electromechanical Automation  
Via Gounod 1  
I-20092 Cinisello Balsamo (MI),  
Italy  
☎ +39 0266012459  
☎ +39 0266012808  
Website: [www.parker-eme.com](http://www.parker-eme.com)  
e-mail: [sales.sbc@parker.com](mailto:sales.sbc@parker.com)

**Parker Hannifin plc**  
Electromechanical Automation  
Arena Business Centre  
Holy Rood Close, Poole, Dorset.  
BH17 7BA UK  
☎ +44 (0)1202 606300  
☎ +44 (0)1202 606301  
Website: [www.parker-eme.com](http://www.parker-eme.com)  
e-mail: [sales.digiplan@parker.com](mailto:sales.digiplan@parker.com)