

# MotionPanel *QuickStart Guide*

## Get Started . . .

MotionPanel™ has been factory-configured to communicate by Ethernet with any Compumotor 6K controller (6K2, 6K4, 6K6, and 6K8). This means that in four easy steps, you can connect MotionPanel and a 6K controller and run the MotionPanel Interact application.

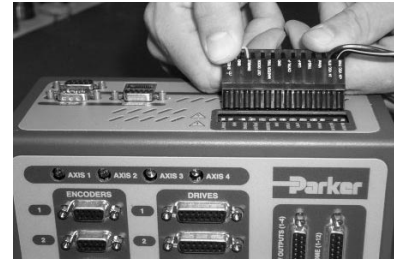
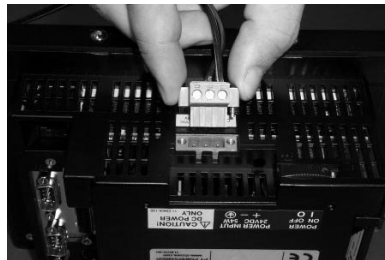
This *QuickStart Guide* will tell you how to connect MotionPanel and a 6K controller via Ethernet cable (shipped with MotionPanel) and enable the controller's Ethernet port.

You must have the following software installed:

- 6K controller operating system v. 5.1.3 or higher (in the controller)
- Motion Planner v. 2.70 or higher (in your development PC)

## . . . In Four Easy Steps

### **1** Connect power (24 VDC) to the MotionPanel and the controller.

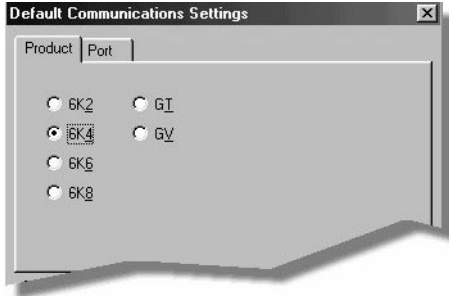


### **2** Connect the Ethernet cable to the MotionPanel and the controller.



### 3 Enable the controller's Ethernet port.

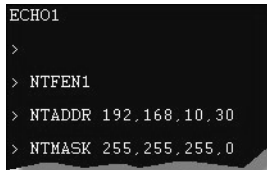
- a. Using a serial cable, connect your development PC to the COM2 port on the 6K controller.
- b. Launch Motion Planner on the development PC.  
The Default Communications Settings dialog box will appear.
- c. On the **Product** tab, select the 6K controller that you will use.



**Note** The default port setting for the development PC is **COM1**. If you wish, you can confirm this by selecting the **Port** tab.

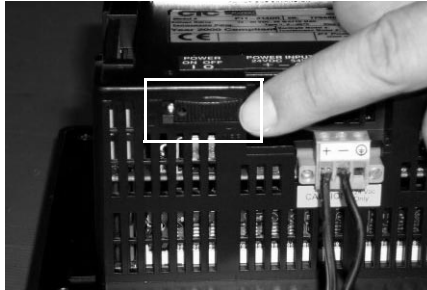
- d. Click **OK** to save your settings.  
The Motion Planner window will appear.
- e. Select the **Terminal1** tab, and type the following commands.  
Press **Enter** after each command.

```
NTFEN1
NTADDR 192,168,10,30
NTMASK 255,255,255,0
```

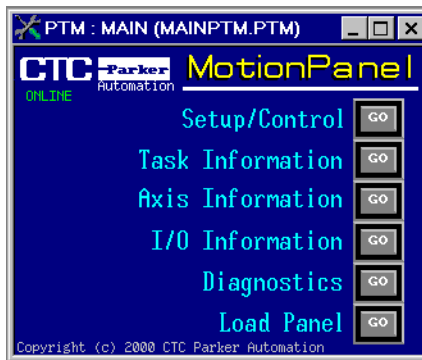


- f. Type **Reset** at the bottom of the screen, and then press **Enter**.

## 4 Turn on the MotionPanel.



The MotionPanel Main Menu will appear.



You are now ready to run the MotionPanel Interact application.

**Note** For instructions on how to mount MotionPanel in an enclosure, see the *PowerStation Model PI User Guide* on the MachineShop for MotionPanel Installation CD.

## Additional Applications

You can download two additional MotionPanel applications from CTC Parker's web site:

- 640 x 480 Application
- Input Tools Application

Just go to CTC's Home page at [www.ctcusa.com](http://www.ctcusa.com), and select the Motion-Panel page.