

# InteractX 4.0

Windows Supervisory HMI Software

Now Supports  
Windows 7  
32/64 Bit  
Runtime and  
Development



## The Shortest Distance Between Machine-Level and Supervisory HMI...

InteractX™ has always led the industry with breakthrough HMI graphics and built-in connectivity. Now with Version 4.0, InteractX leads the way into Supervisory HMI by dramatically reducing application development time and integration cost for your manufacturing operations.

InteractX 4.0 now provides powerful Trending and Analysis Tools that aggregate data from multiple machines or workcells. InteractX also makes it easy to push Interact Xpress™ machine-level HMI screens and data directly into its interface - without having to recreate applications or input tags!

Microsoft, Windows, Visual Basic and ActiveX are registered trademarks of Microsoft Corporation

## Contact Information:

Parker Hannifin Corporation  
**Electromechanical Automation Division**  
5500 Business Park Drive  
Rohnert Park, CA 94928  
**phone 800.358.9068**  
[www.parkermotion.com/HMI](http://www.parkermotion.com/HMI)



## Product Features:

- **Includes Quick Logging – start logging data in minutes**
- **Full featured Historical Trending software**
- **Supervisory-Level HMI aggregates data from multiple sources, including 3rd-party PLCs and HMI panels**
- **Time-saving “Distributed HMI” integration with Interact Xpress**
- **Scalable, lifelike graphics**
- **No preset limits on pens or logs**
- **Unlimited tags – no hidden costs**
- **Over 60 standard communication drivers included**
- **Sophisticated Recipe**
- **Management tools included**
- **Preconfigured and custom Panel Tool library for quick screen development**
- **Supports ActiveX controls for easy integration of 3rd-party tools**
- **Includes VB for Applications (VBA) for easy customization**
- **Vast 3rd-party OPC client/server support**
- **Easy multi-language support**
- **Includes Easy E-Sigs tools to simplify 21CFR11 compliance**

VICPAS  
HMI Parts Center

ENGINEERING YOUR SUCCESS.

# Reduce Supervisory Application Development Time By Up To 80%

Working with Xpress™ HMI, InteractX™ significantly lowers the cost of integrating Supervisory HMI

By far, the largest cost associated with moving your operation from standalone operation to Supervisory HMI has typically come from the time it takes to develop special applications for the Supervisory software. When supervising machines running Interact Xpress, InteractX eliminates most of that time and cost. That's because InteractX can import screens and data directly from Xpress applications. And InteractX's new Historical Trending Tool provides powerful monitoring and analysis of all machines being supervised.

InteractX also takes full advantage of Xpress' "Distributed HMI" architecture to remotely run, monitor and publish multi-machine HMI applications with reduced complexity and integration cost.

- **Leverage your existing Interact Xpress™ screens and data by bringing them directly into InteractX 3.0**
- **Full-featured Historical Trending software combines data from multiple machines and sources, including 3rd-party PLCs and HMI panels**
- **Take full advantage of Interact Xpress' Distributed HMI architecture to publish, monitor and trend machine operations**
- **Easily upgrade from standalone machine HMI to Supervisory HMI without complex systems integration**

## InteractX Supervisory HMI with Interact Xpress



## Advanced Connectivity Features

- **Bundled Communications Drivers:** InteractX's COMMServer includes 60+ bundled communications drivers, with serial and Ethernet drivers for major PLC and motion controller brands.
- **OPC Client Interface:** Provides connectivity to any 3rd-Party OPC Server; allowing InteractX to communicate with any of the hundreds of OPC Servers.
- **OPC Tag Server:** Any InteractX tag can be accessed by OPC Client applications such as SCADA systems, DCS, MIS applications, etc.
- **Networking:** Share real-time data via Ethernet between InteractX or other SCADA systems, Xpress HMI, Interact HMI and back office applications.



# Enhanced Interface Design Reduces Development Time

Parker's InteractX™ offers the most advanced development interface and graphics of any Windows HMI, with the lowest installed cost and development complexity.

You'll be able to use InteractX right out of the box, without special IT skills or assistance. It's user-friendly, visual design interface includes styles and templates that enable multiple users to quickly build applications with a consistent "look and feel." InteractX's toolbin allows custom tools or entire screens to be saved for drag and drop into other applications and easy sharing between designers.



With the **Navigation Panel Wizard**, you can quickly create menus for navigating through your entire HMI application.

Name	Data Source	Group
Soylec	(Local)	Recipe
Caramel	(Local)	Recipe
phosphoric_acid	(Local)	Recipe
Cola	(Local)	Recipe
SoftBrew	(Local)	Recipe
Volume	(Local)	Recipe
Sedl_Method	(Local)	Recipe
X_Cor	(Local)	Global
Lemon_line	(Local)	Recipe
Citric_Acid	(Local)	Recipe
sodium_citrate	(Local)	Recipe
Sodium_Benzoate	(Local)	Recipe
Food_Fiber	(Local)	Recipe

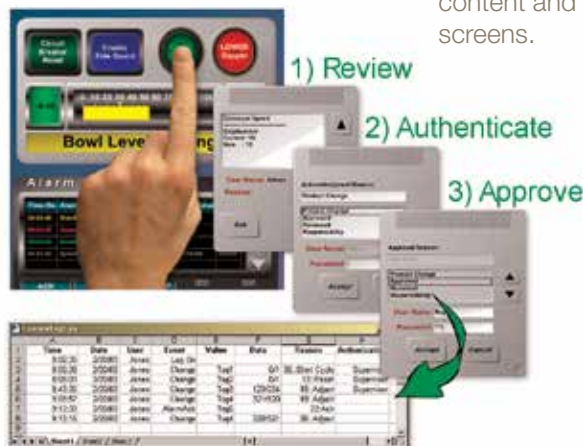
The **Integrated Tag Editor** includes time-saving Tag Group and Import Tag features for quickly creating, searching and editing tags. You can even import AB tags directly!



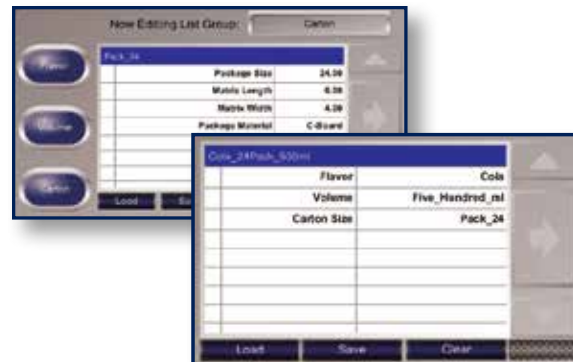
The enhanced **Browser Display Tool** dynamically browses web content and Help files via runtime screens.



Easily configure InteractX for **Multi-language Support**. All text, alarms, screens, and history/log data can be translated into a single CSV file.



InteractX simplifies 21CFR11 Compliance by tracking operator input and providing Electronic Signatures that are easily configured with no special scripting or programming required!



**Nested Recipes** can be downloaded as a data source, allowing InteractX to manage/edit detailed Recipes and formulations, which can also be shared with multiple machines running Xpress.

## InteractX System Requirements

<p><b>Development Supported:</b></p> <ul style="list-style-type: none"> <li>Windows XP Pro</li> <li>Windows 7 32-bit and 64-bit</li> </ul>	<p><b>Runtime Systems Supported:</b></p> <ul style="list-style-type: none"> <li>Windows XP Pro</li> <li>Windows 7 32-bit and 64-bit</li> </ul>
--	--



**Panel Tools:** Over 20 pre-configured panel tools for buttons, panel lamps, gauges, readouts and more.

**Graphics:** Eye-catching, vector-based graphic elements; free-form animation; high-quality graphics import, unlimited colors, roundness, gradients, materials and transparency.

**Alarms:** Monitor and acknowledge real-time and historical alarms with advanced features for user access, filtering, grouping, logging and printing.

**User Security Levels:** 21CFR11 compliant, multi-user access levels with unlimited number of users.

**ActiveX Support and Automation:**



Host standard, off-the-shelf, 3rd-party tools like Media Player, vision tools, trending, etc. Or customize application with Excel, Access, VB or C++ programs.

**Visual Basic for Applications (VBA):** Fully integrated VBA with access to tools, graphics, alarms, application properties and tags.



**Integrated Tag Editor:** Drag-and-drop tag editing with easy import/export, including PLC address and “Where Used” information. Support of full math capabilities for tag scaling and creation of complex expressions.

**Multi-Language Support:** Translate all text, alarms, screens, and history/log data in a single CSV file - including Asian character set.

**“Pack & Load” Project Management Tools:** Simplify application management, copying, transferring and installation in multiple locations.

**Bundled Communications Drivers:** Includes 60+ bundled communications drivers, including serial and Ethernet drivers for major PLC and motion controller brands.

**OPC Connectivity by Kepware:** Connectivity to any 3rd-party OPC Server; allowing communication with any of the hundreds of OPC Servers.



**OPC Tag Server:** Tags can be accessed by OPC Client applications such as SCADA systems, DCS, MIS applications, etc.

**Networking:** Real-time data sharing via Ethernet with AB, Siemens, Modbus and more.

**Trending:** Historical trend logging and replay in both Graphical and Log form views. No limits on the number of items logged or displayed in the Trend viewers.

All published product specifications are subject to change without notice.

© 2013 Parker Hannifin Corporation

INTX-1008 3.18.13



ENGINEERING YOUR SUCCESS.