

AIM-Android10-ARM_64-PPC1XX
User Manual
2021-12-10



Contents

1 About Manual.....	3
2 Introduction.....	3
2.1 New features	3
2.2 Device support list	3
2.3 Preview	3
3 Installation.....	4
3.1 Prepare an Installtion sdcard	4
3.2 Install android 10	5
3.3 Hardware Requirements.....	6
4 Usage.....	7
4.1 About SerialPort sample.....	7
4.2 About KioskSetting	7
4.3 About Screen RotationControl	14
4.4 Other Applications	15
4.5 How to use adb tool in windows	16

1 About Manual

Thank you for using Advantech product and AIM-Android 10. This manual is a user manual of AIM-Android 10. This manual may be copied and distributed in any medium, either commercially or non-commercially.

2 Introduction

AIM-Android 10 is developed for Advantech devices based on formal Android 10. It is customized to satisfy users' requirements and to add new functions and features.

2.1 New features

2.1.1 Automatic Installation

In the process of installation, device recognizing can make phase more automatically. It will ensure that the users use Advantech android in Advantech device more comfortably.

2.1.2 Debugging Support

In the Advantech device you can also use adb over USB OTG. It will ensure that the users use debugging in Advantech device more comfortably.

2.1.3 Serial Port Support

We have developed a demo serial port JNI, JAR and utility for users. It can test serial port functions with UI utility.

2.1.4 Pre-installed Third Party Applications

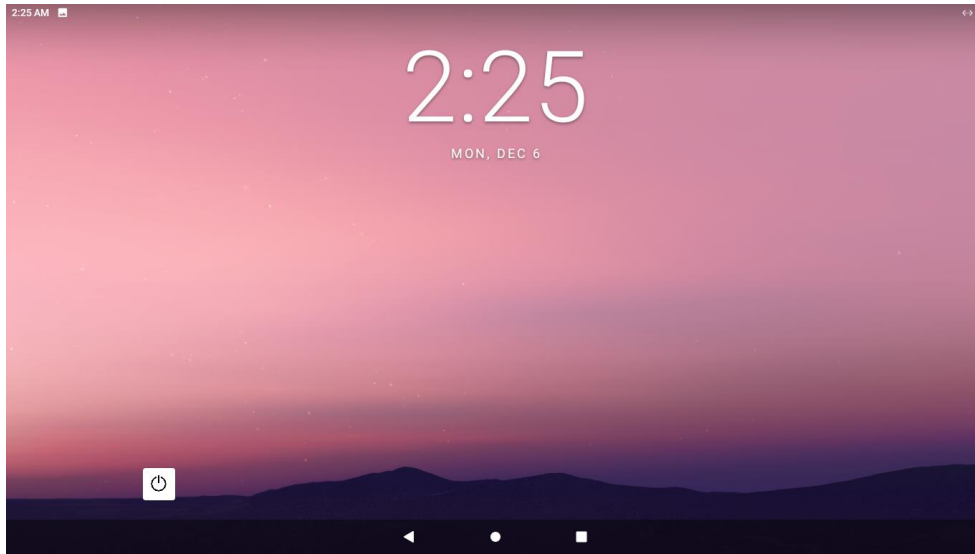
Third party applications are installed as default. It is more convenient for the user.

2.2 Device support list

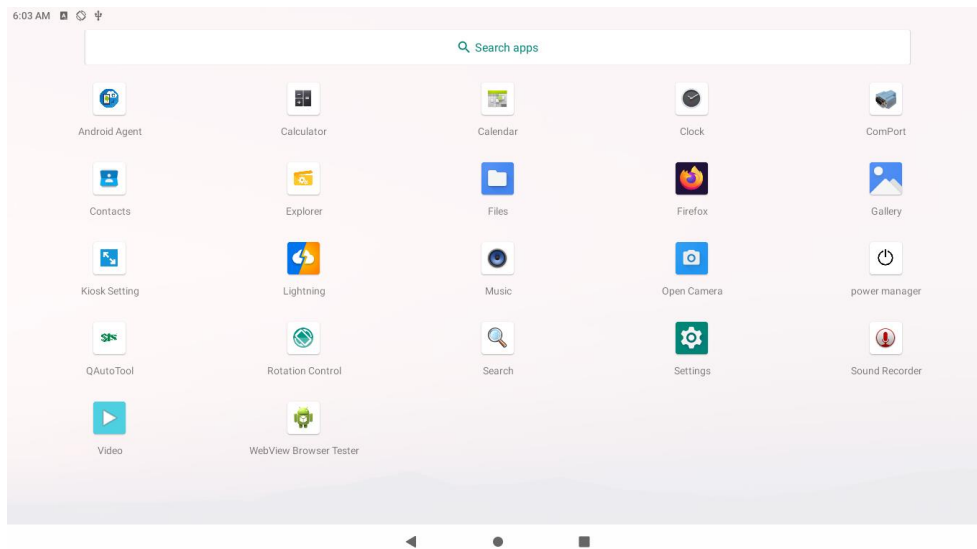
We currently support the following products:
PPC-1XXW

2.3 Preview

After installation, you can see the HOME and application list:



HOME

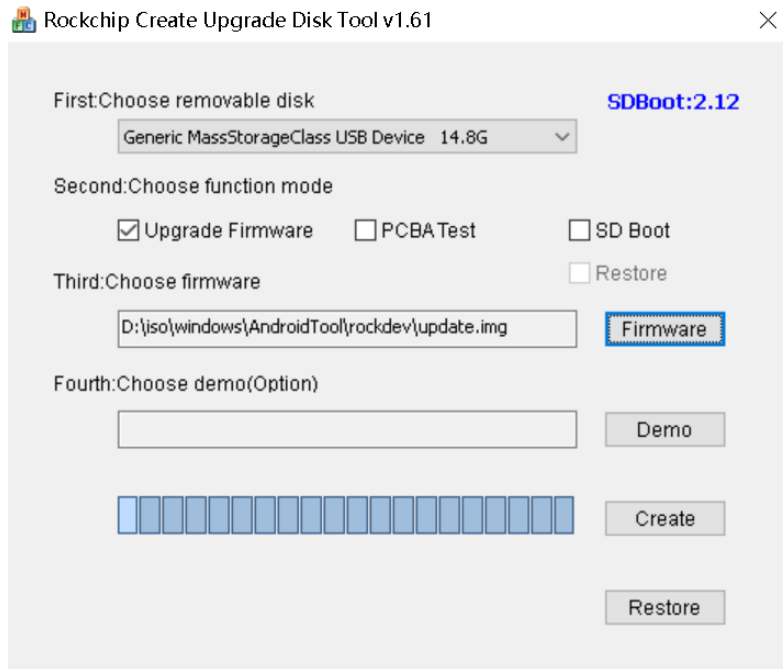


App List

3 Installation

It is easy to install AIM-Android 10 on a hard disk.

3.1 Prepare an Installtion sdcard



You should click the “Create” button to burn the sdcard.

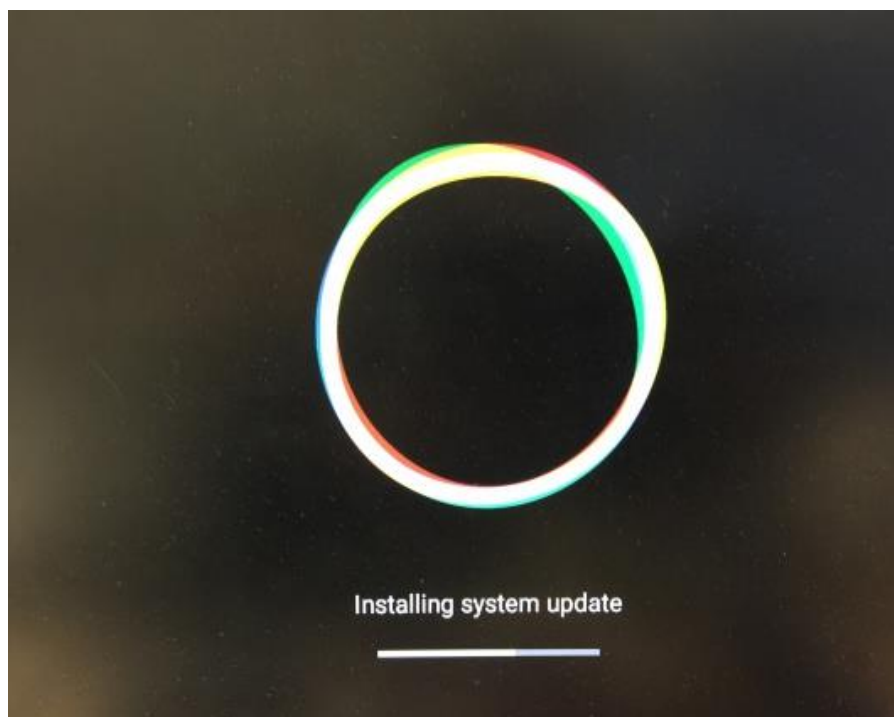
3.2 Install android 10

Step 1 : Please power off in PPC1XX.

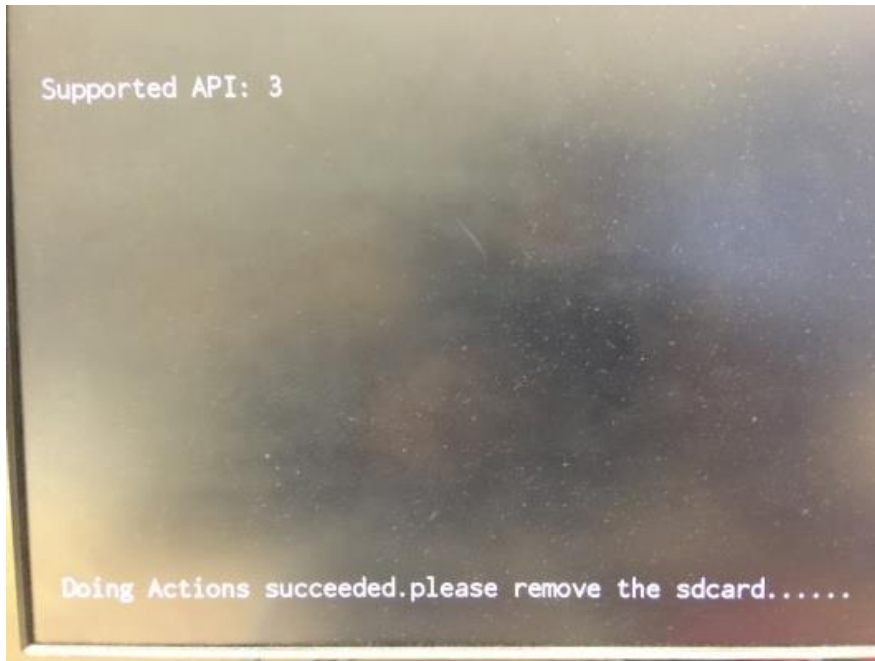
Step 2 : Insert the SD card.

Step 3 : Power on in PPC1XX.

Step 4 : Installing system update.



Step 5 : Please Remove the SD Card when PPC1XX show the message "Doing Action succeeded. please remove the sdcard.....".



Step 6 : Remove SD card.

The Android image will be auto-install.

3.3 Hardware Requirements

The following information represents the requirements necessary to install AIM-Android 10 successfully.

Sdcard Size

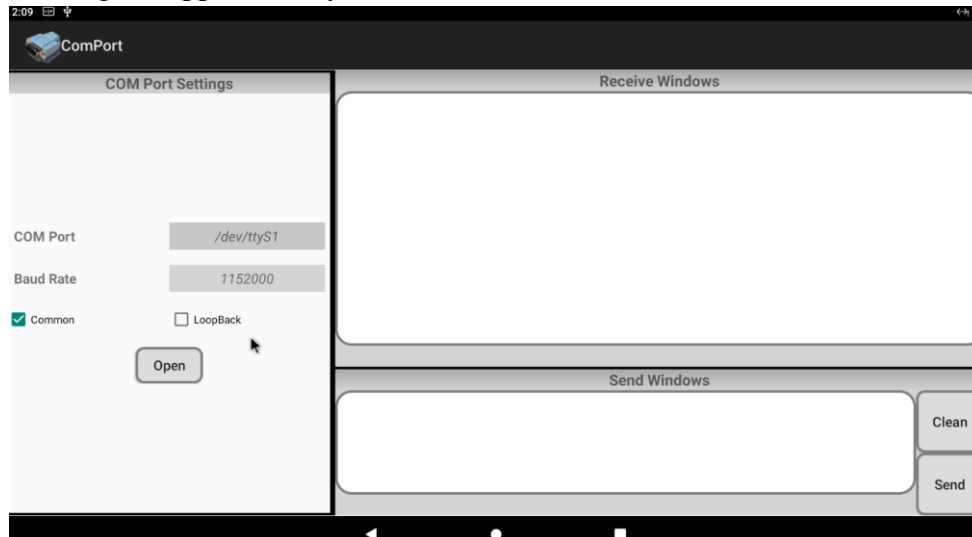
- Recommended : 8 G or more

4 Usage

4.1 About SerialPort sample

After installing AIM-Android, you will see a Serial application in App list. Users can test serial port with it.

After starting the application, you will see:



Serial port options

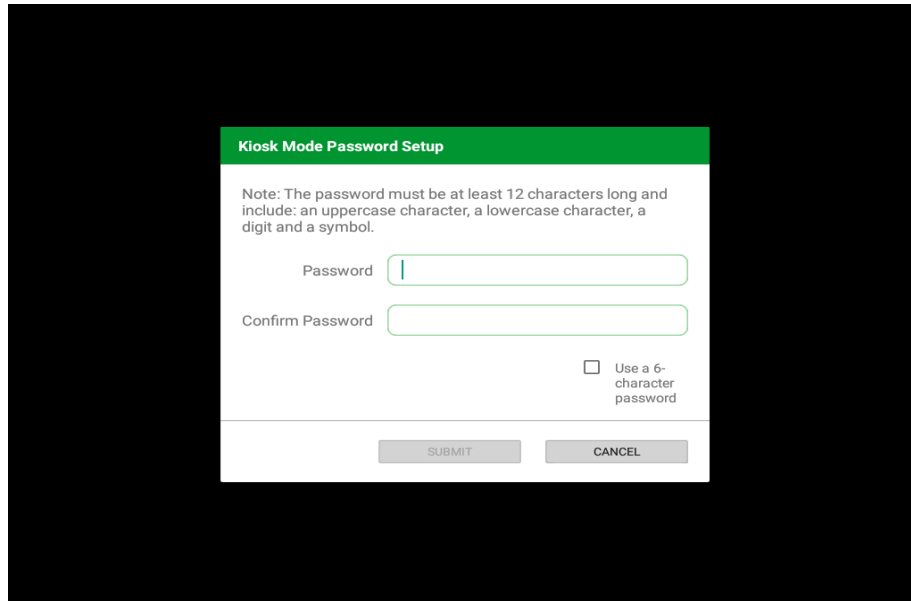
Usage: choose the port, baudrate.(e.g., ttyS1, 9600)

4.2 About KioskSetting

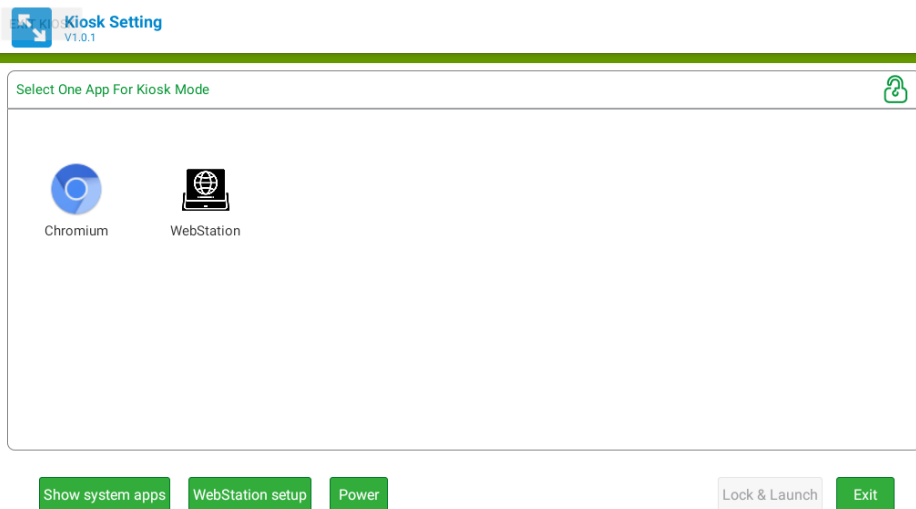
For Android Kiosk solution, Advantech provide a kiosk setting launch App, user can use this App to set any other android App as kiosk App, kiosk App means it will run in full screen when boot up, navigate bar and status bar of android will hide.

4.2.1 Set the Kiosk Setting app as the default launcher

Just launch the kiosksetting app, the app can be the android default home app. When KioskSetting app starts for the first time, you can see the following screen. Please set the password of kiosk mode according to the prompt information in the dialog box.

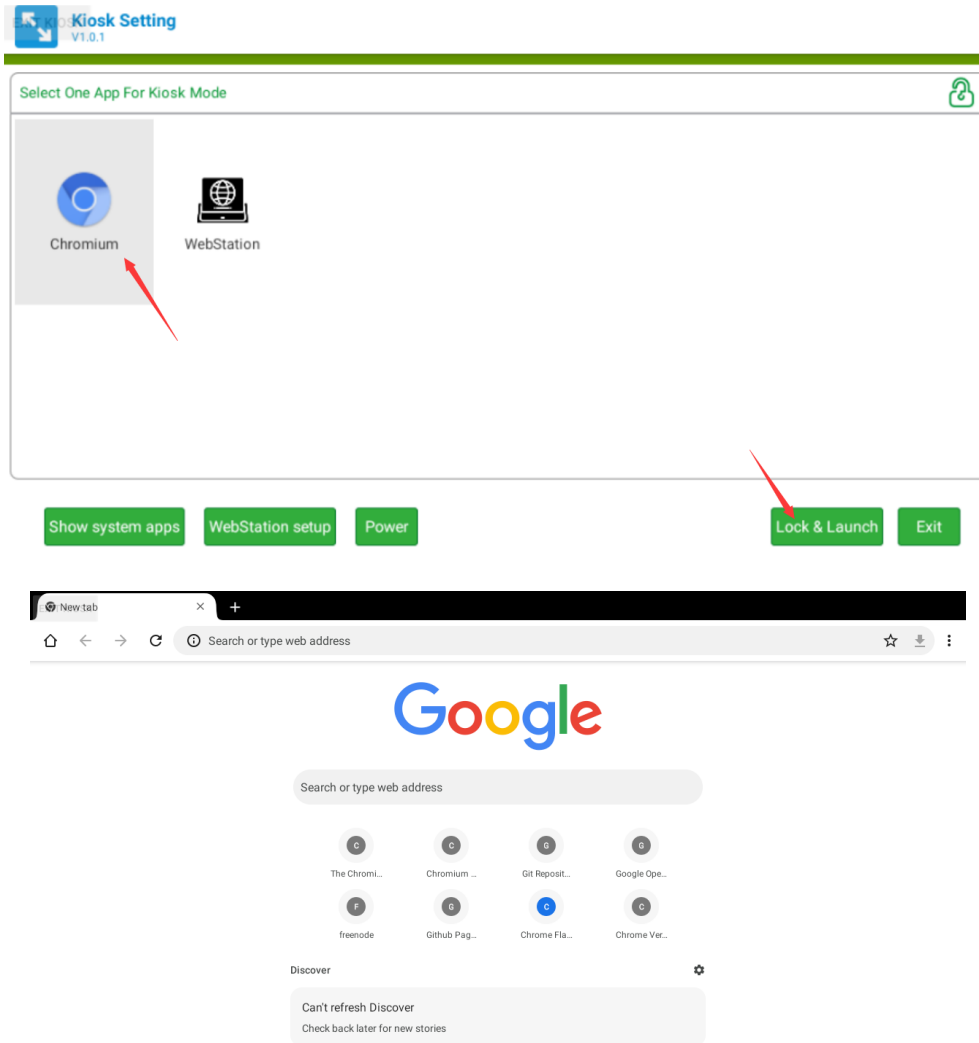


After input, click "SUBMIT" button to enter the app main interface.



4.2.2 Set third app as kiosk app

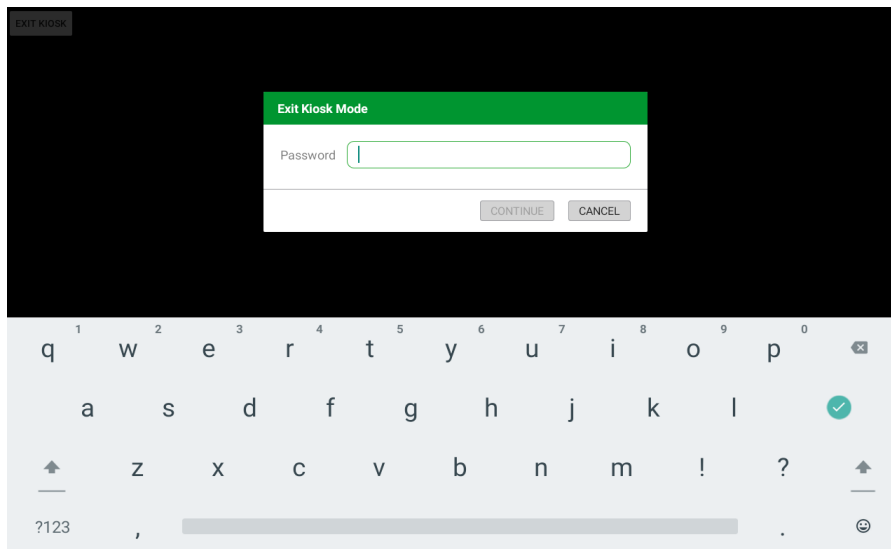
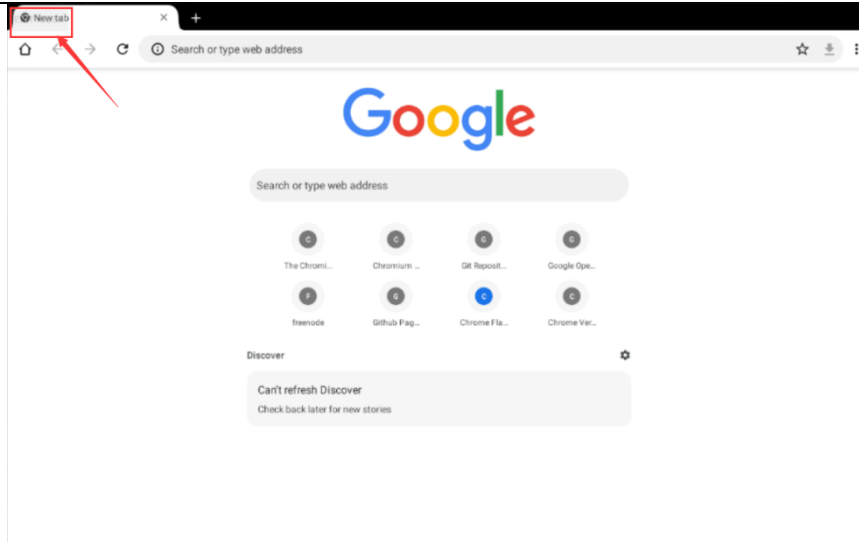
First, click the "Chromium" icon in the main interface, and then click the "lock & launch" button to set the Chromium app as kiosk app.



4.2.3 Exit kiosk app

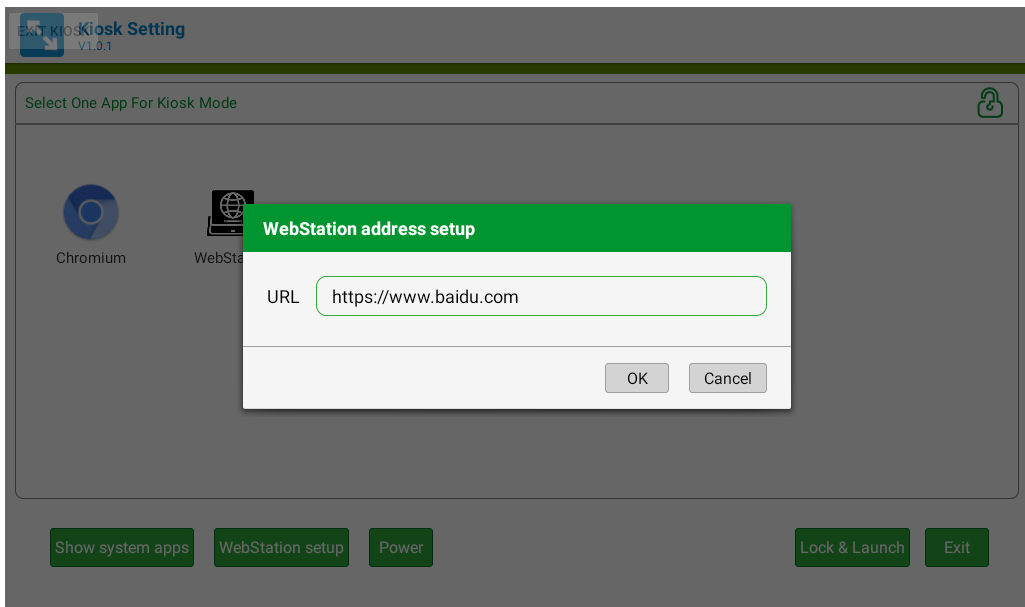
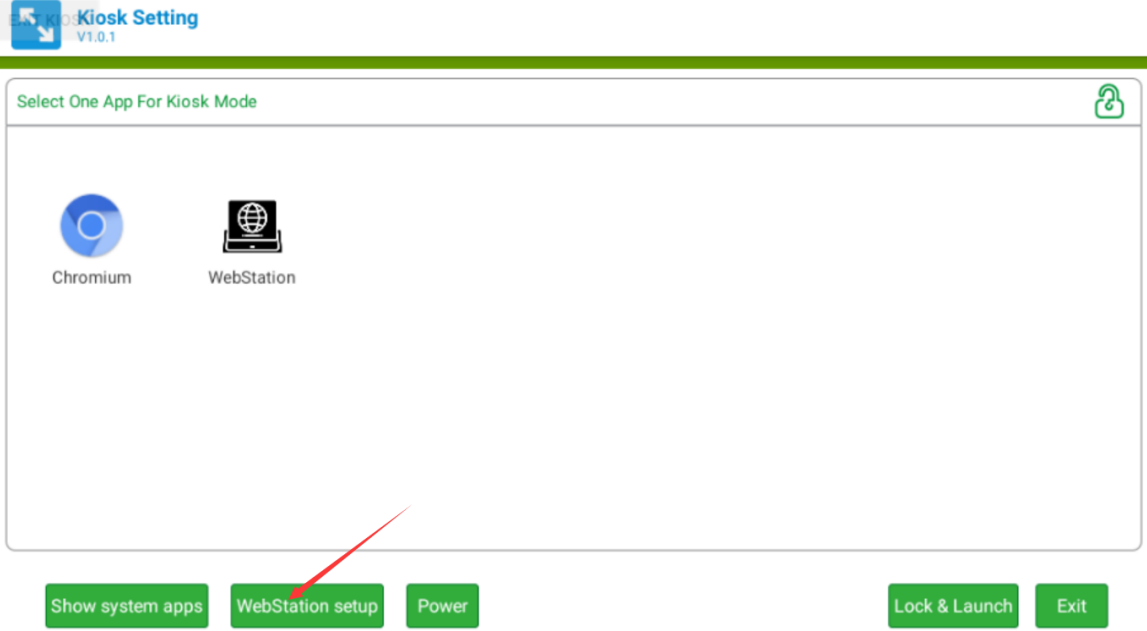
If you want to exit the kiosk app, you need to long press the “EXIT KIOSK” on the screen and enter the password for setting the kiosk mode before.

After long pressing the “EXIT KIOSK” on the screen, the following dialog box will appear to ask for the password. After entering the password, click “CONTINUE” button to return to the KioskSetting app interface.

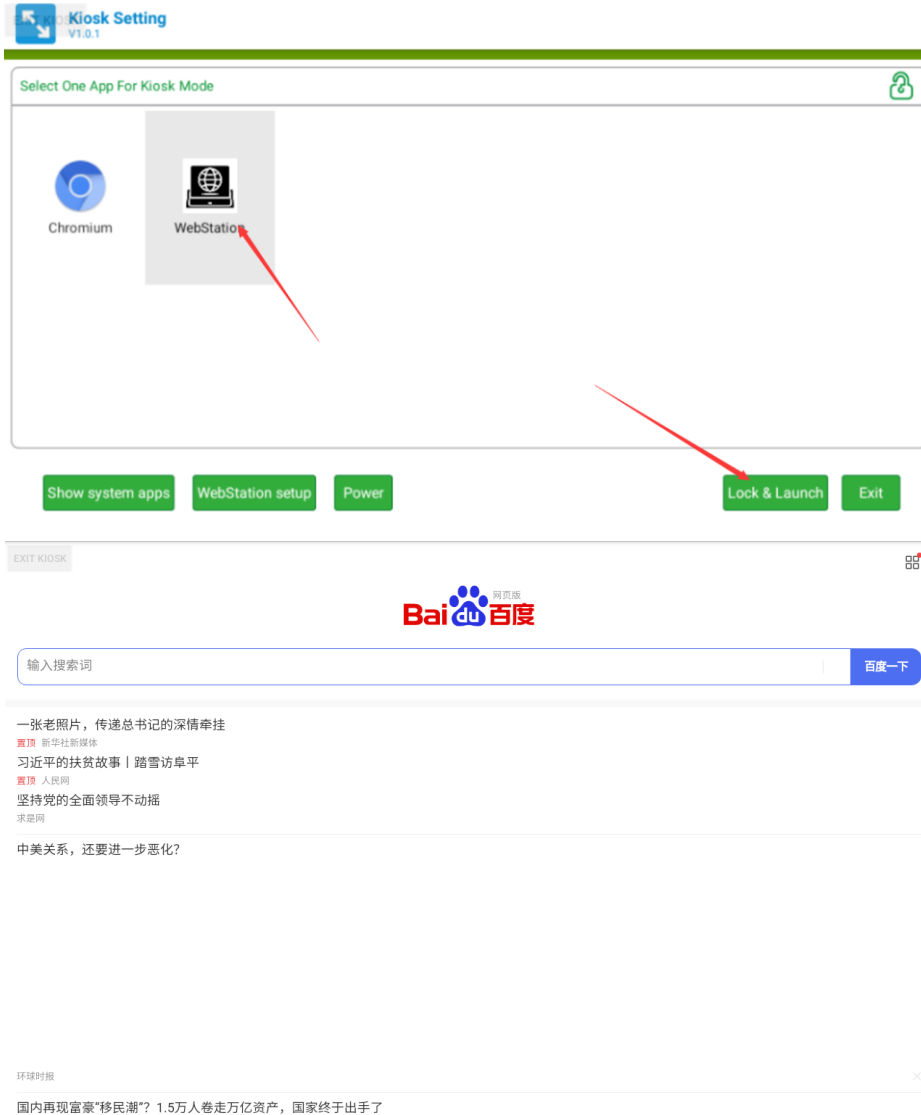


4.2.4 Set WebView as kiosk app

Click the "WebStation setup" and input the URL.



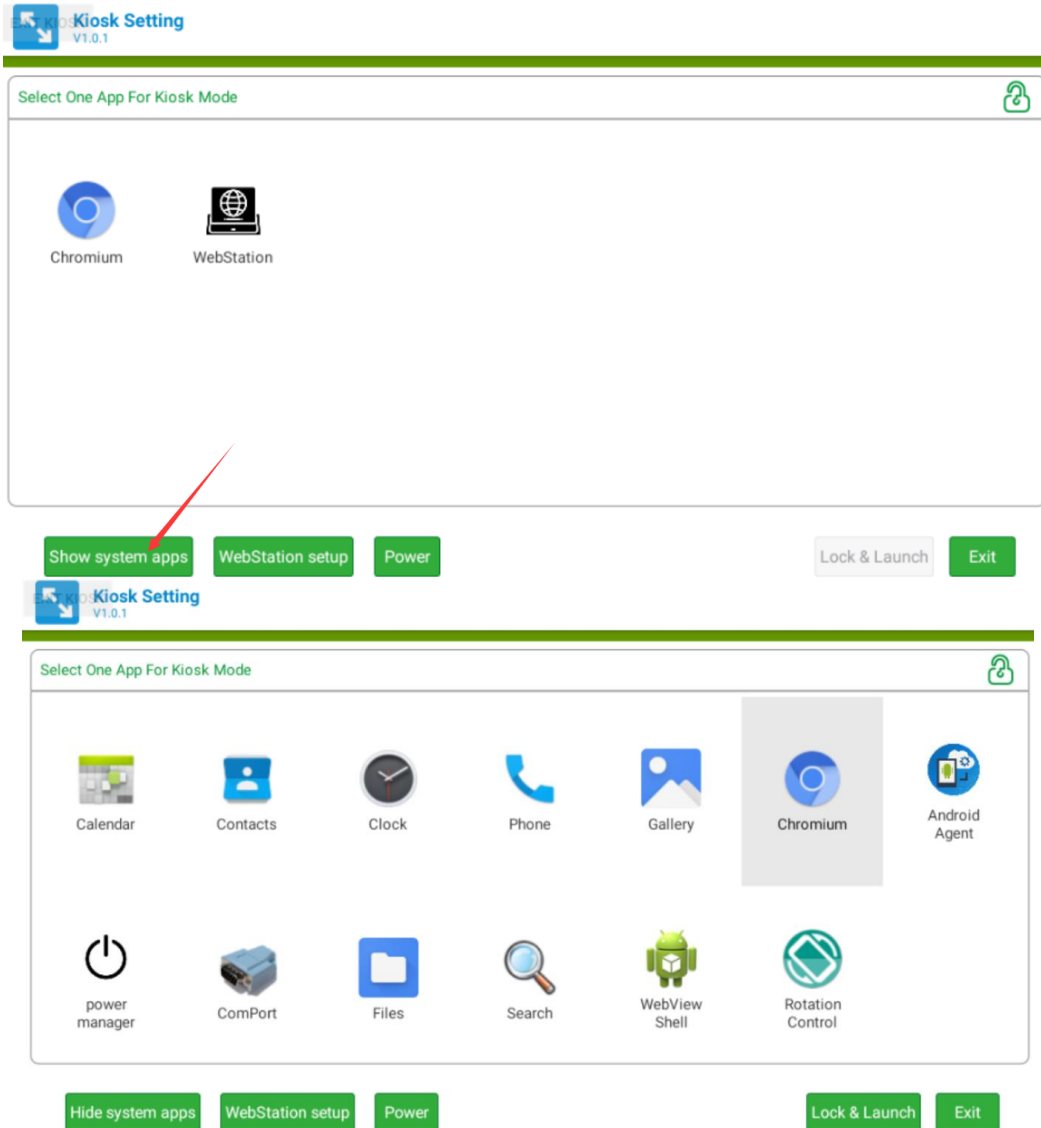
Click the "WebStation" icon in the main interface, and then click the "lock & launch" button to set the Chromium app as kiosk app.



If you want to exit the kiosk app, you need to long press the “EXIT KIOSK” on the screen and enter the password for setting the kiosk mode before.

4.2.5 Show system app

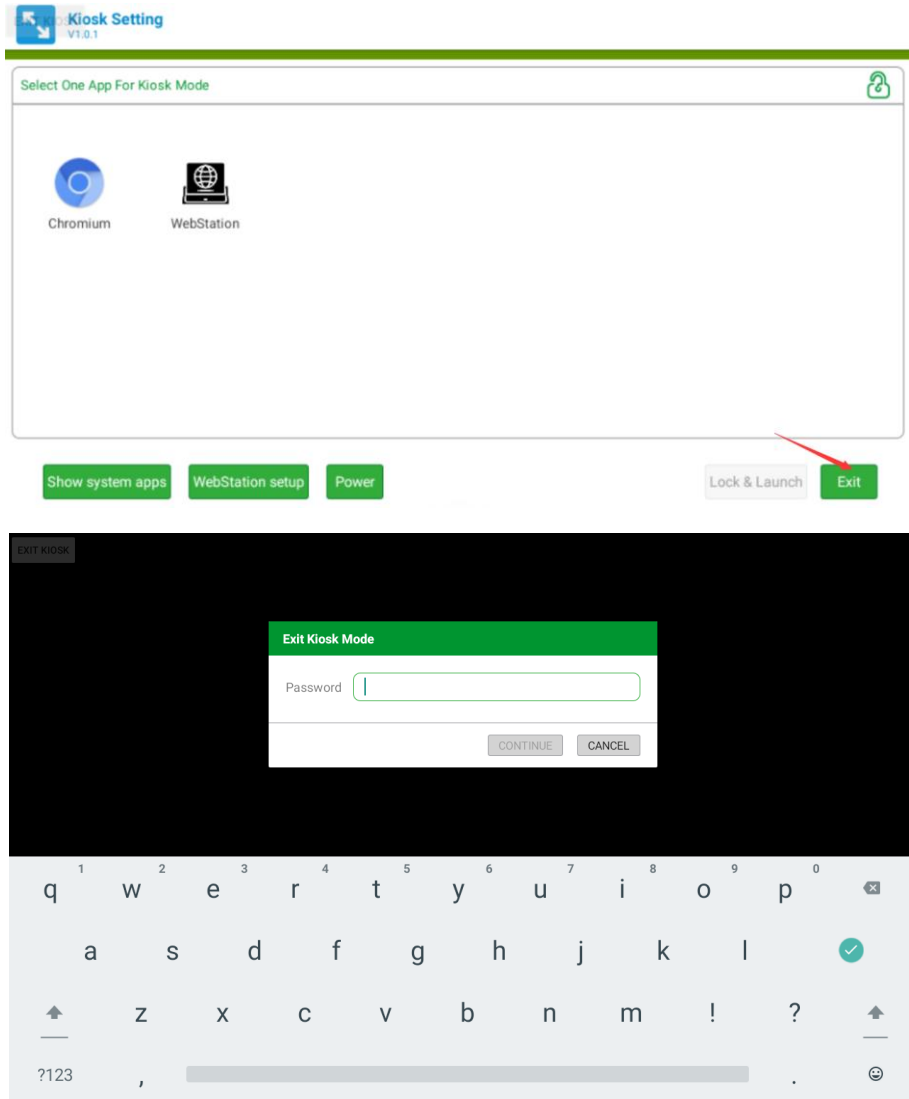
Click the "Show system apps" icon in the main interface



4.2.6 Exit kioskSetting

Click the "Exit" in the main interface and input the password.

If you exit the application successfully, the launch3 will be the default home app.

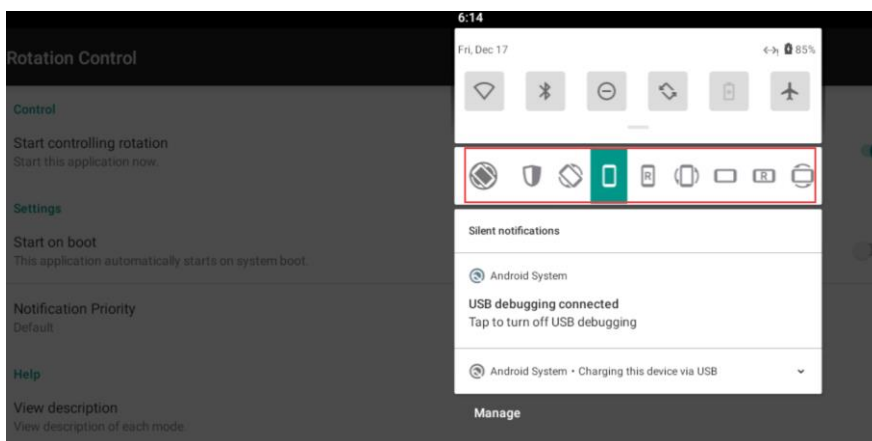
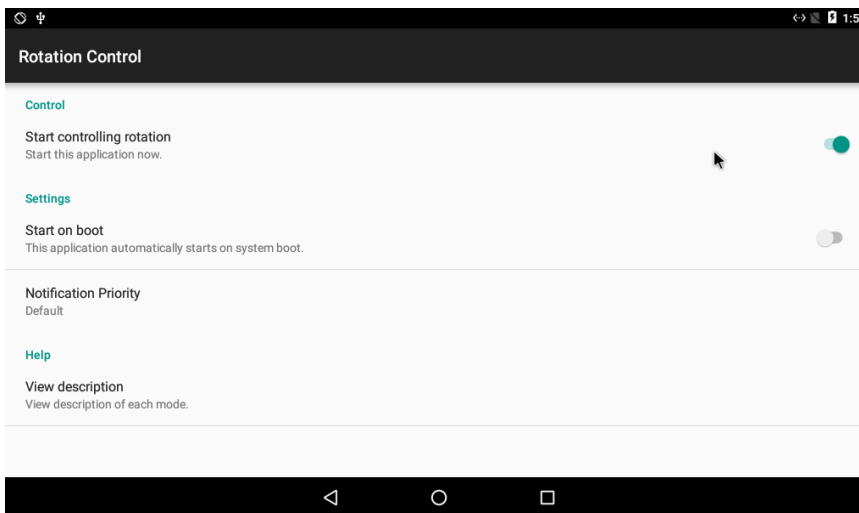
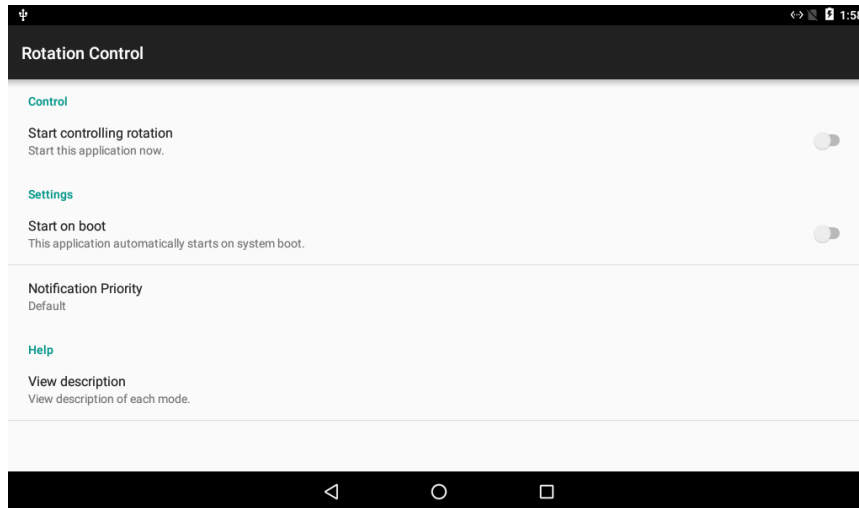


Note:

If you don't want to use the "EXIT KIOSK" button, we can deeply customize the image and use the gestures (similar to "√") to trigger the exit action.

4.3 About Screen RotationControl

The rotate step of the screen.



4.4 Other Applications

Many other applications for arm supported by Android or other resource web sites. You can search and download them from internet by yourself.

4.5 How to use adb tool in windows

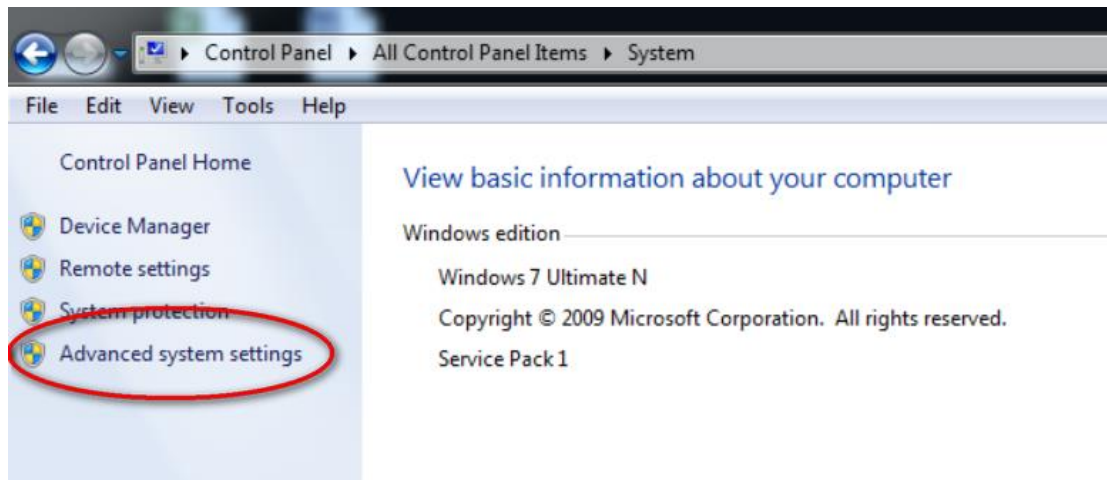
4.5.1 Install ADB

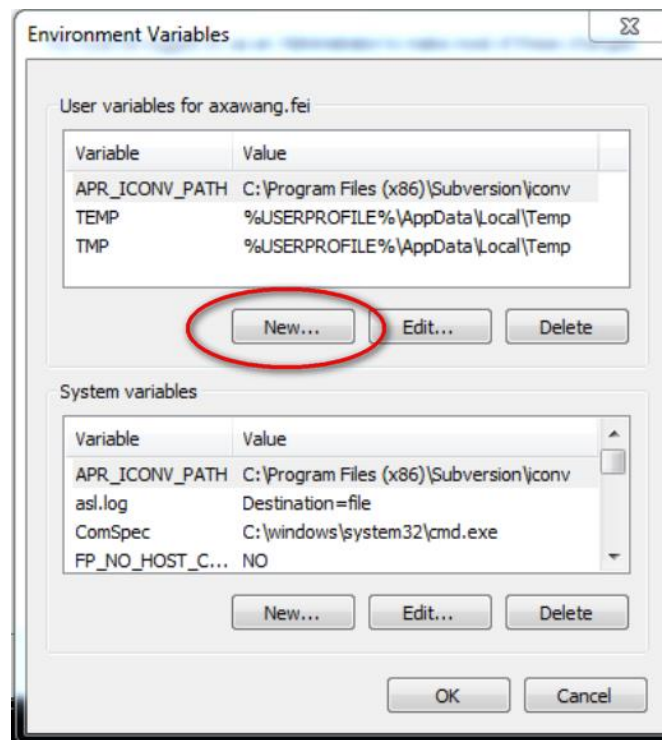
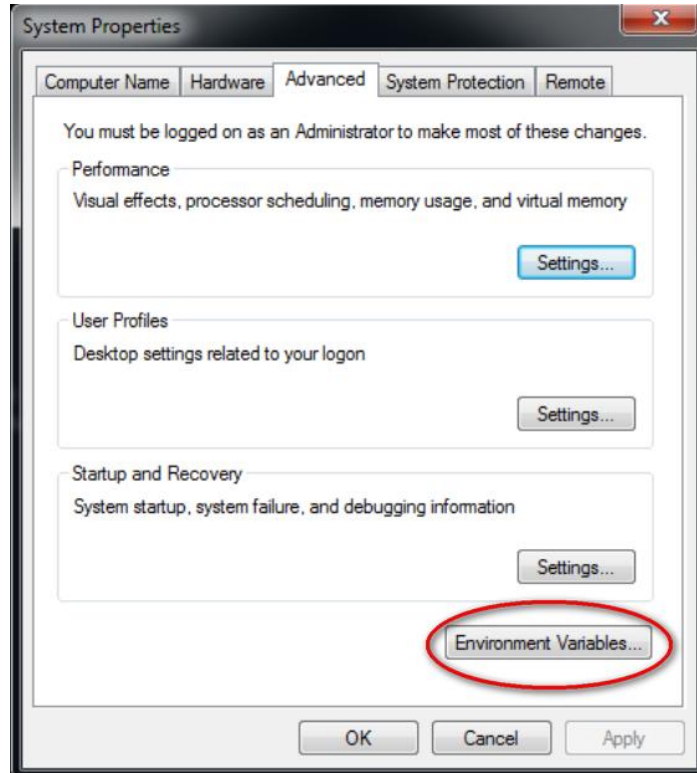
After the connection is built, download & execute “ADBDriverInstaller.exe” to install adb driver.

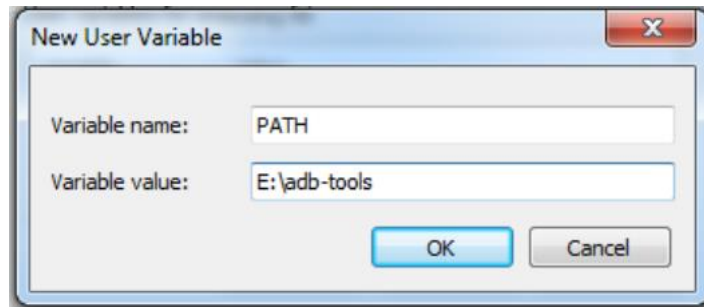
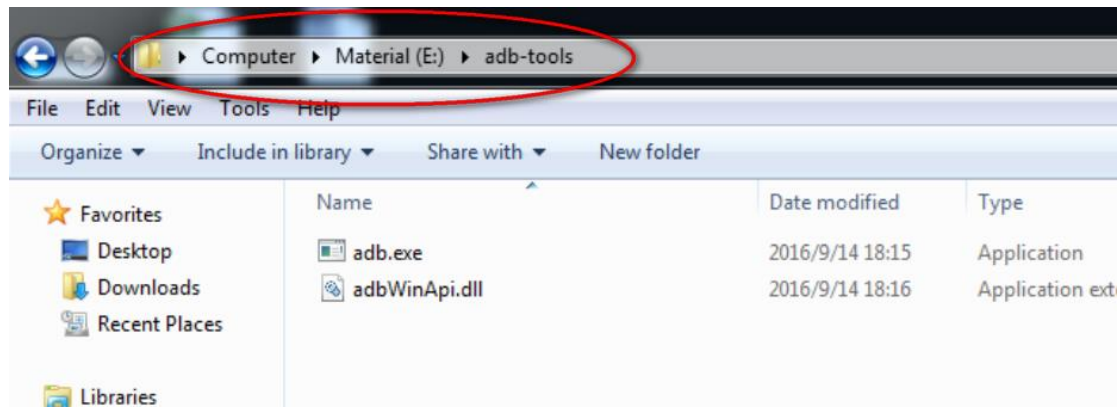


4.5.2 Create PATH

Add adb-tool and create path in windows.







Appendix

1. How to start application after booting android system?

After android system is started, it will broadcast an action message named 'android.intent.action.BOOT_COMPLETED'. You can receive this message and start your application.