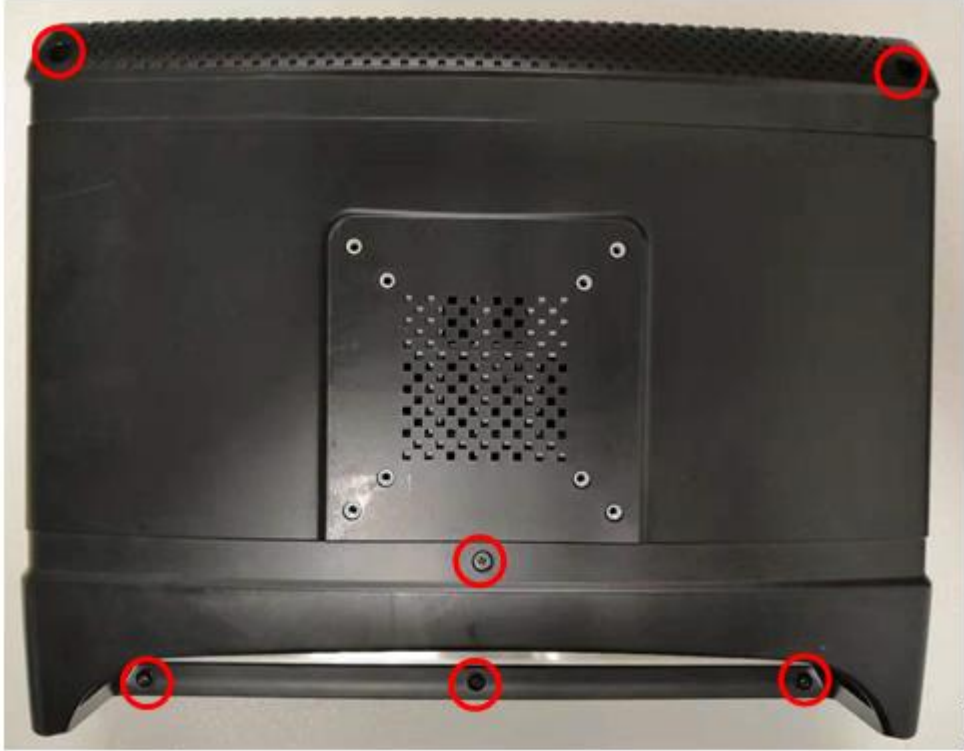


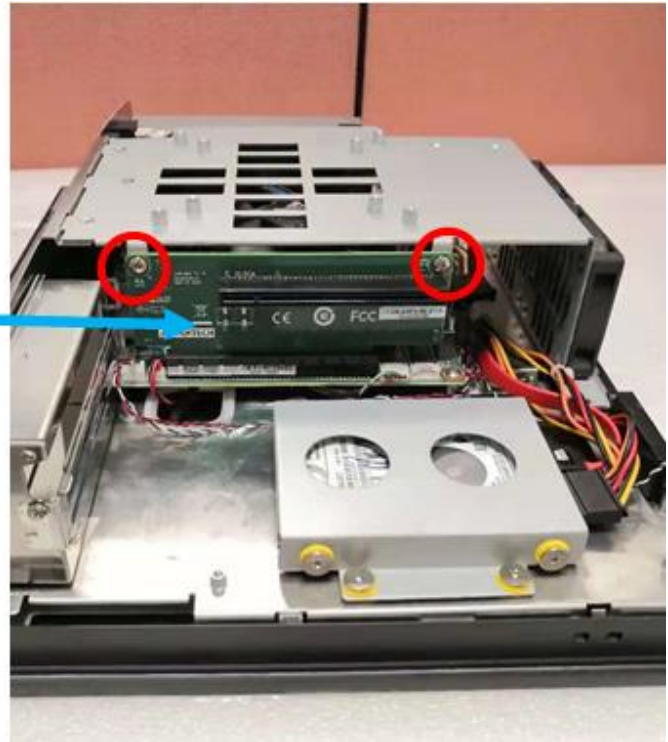
Graphic card installation guide for PPC-6000C

The following uses PPC-6171C-RTAE + PPC-MB-610 + SKY-QUAD-P2200-BLK for demonstration.

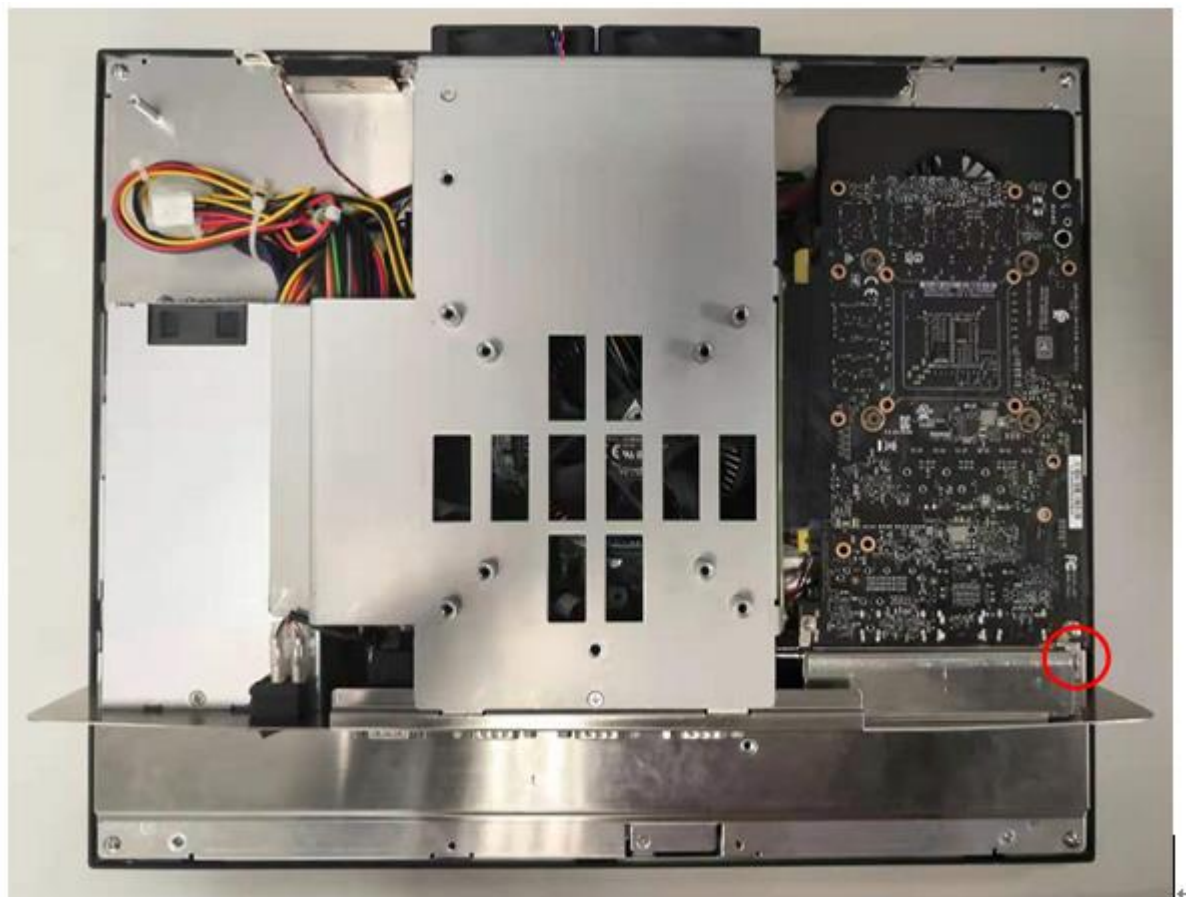
1. Unscrew the back cover screws, open the back cover



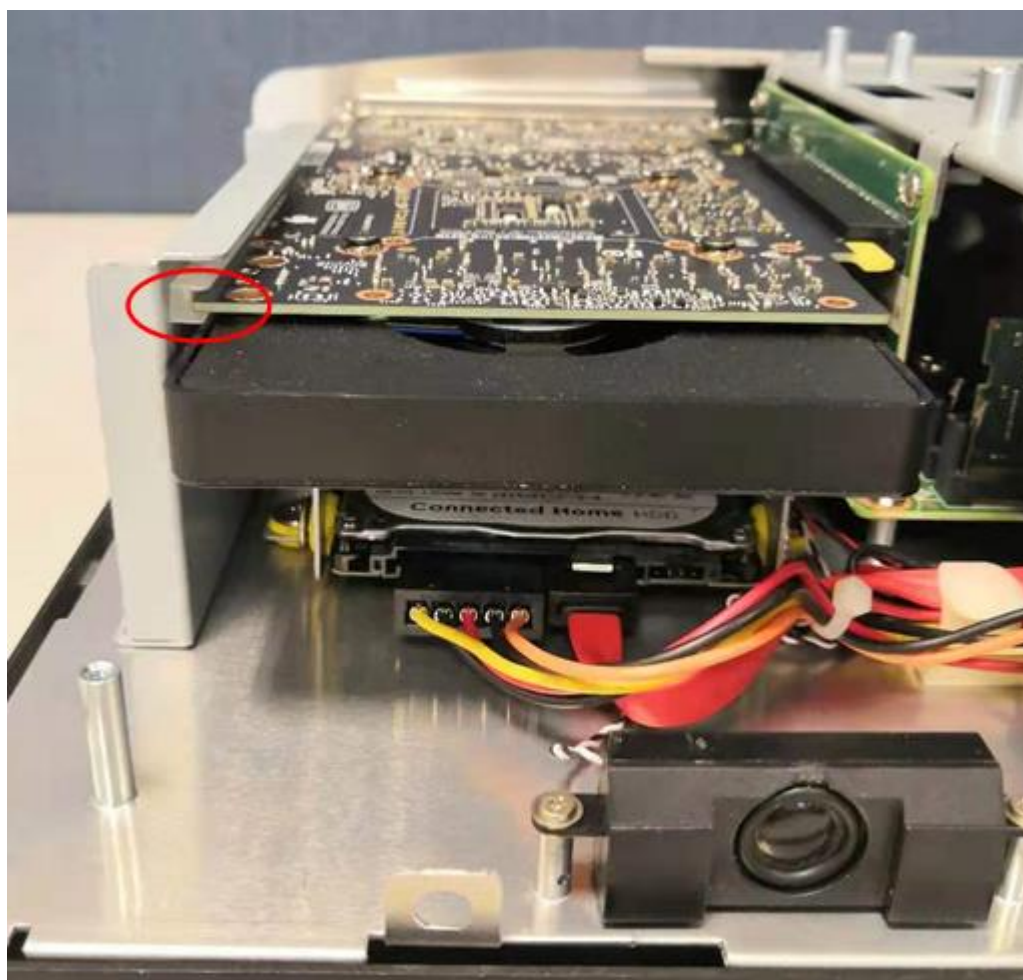
2. Unscrew the riser card screw to replace the riser card(9693BE20000)



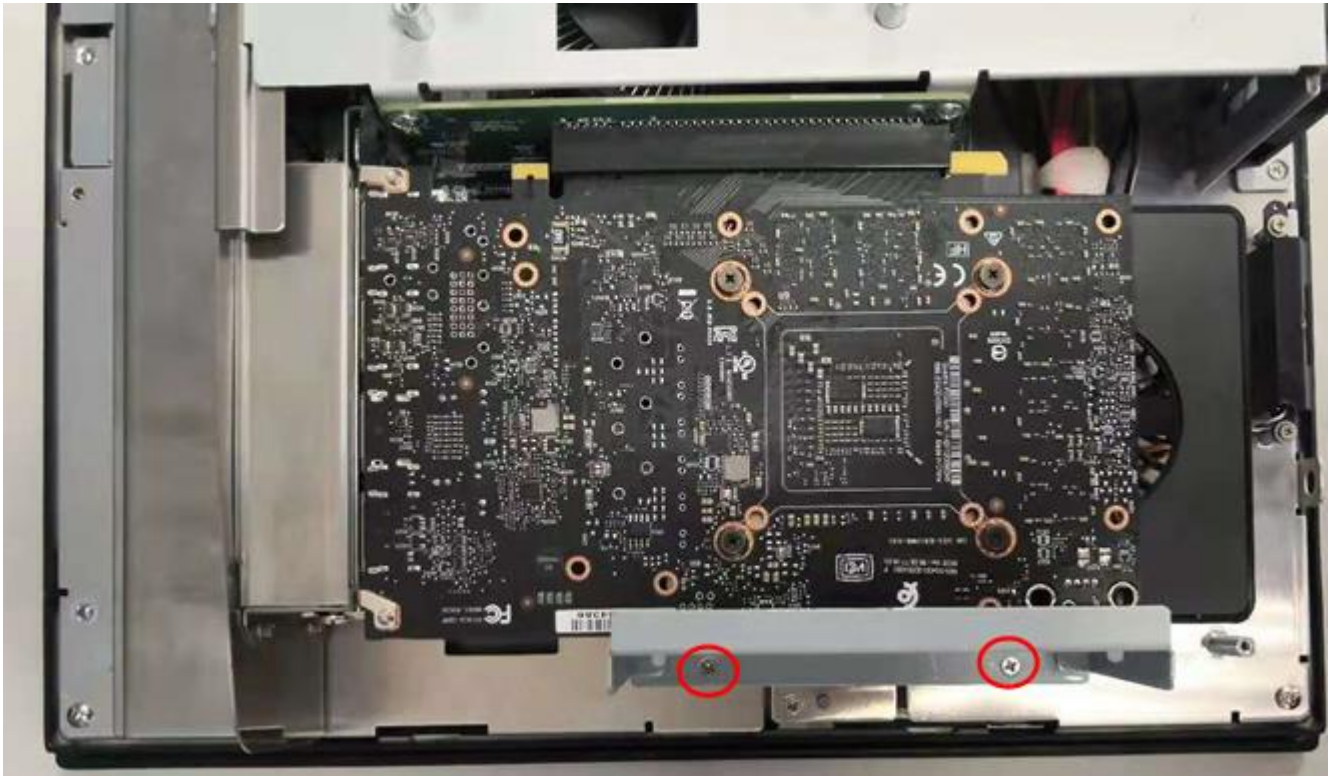
3. Install the graphic card into the PCIe slot and lock the screws



4. Install support frame



5. Attach the support frame with screws

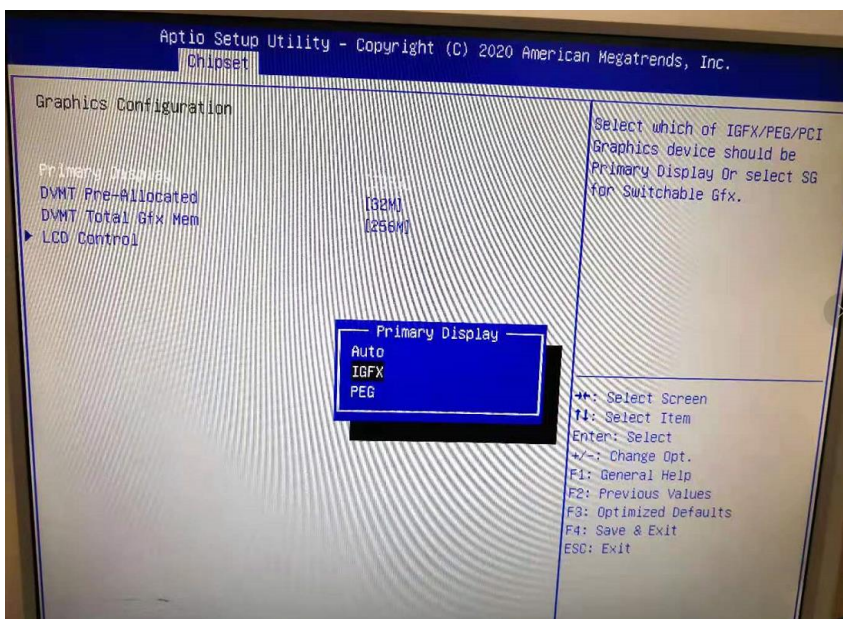


6. Reinstall the back cover to complete the installation

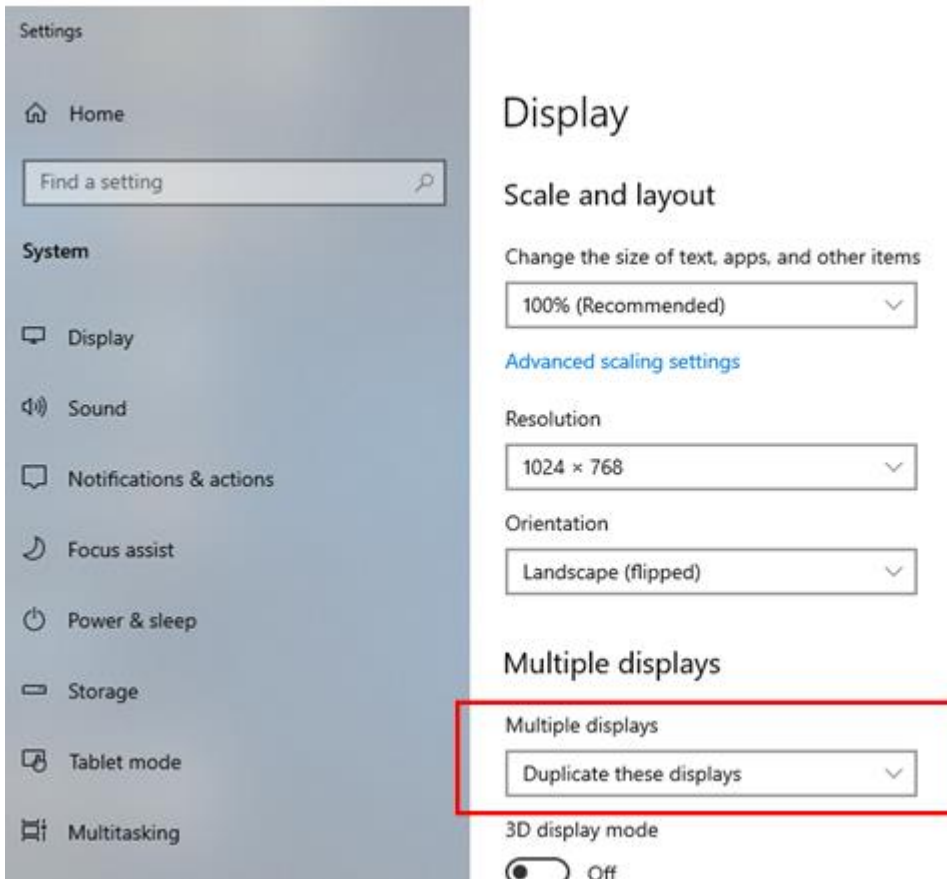
Note:

For PPC-6000C, you need to change BIOS setting, otherwise only the external graphic card will be displayed, the integrated graphics card will not be displayed.

Power on and press the delete key to enter the BIOS setup. Under Graphics configuration, set the Primary Display to **IGFX**, press F4 save and exit.



And also set the Multiple Displays as “Duplicate these displays” to get better performance.



1. The supported card sizes are as follows:

	Maximum card size (L*W*H)
PPC-6151C	178*107*20 mm
PPC-6171C	205*107*20 mm
PPC-6191C	205*107*20 mm

2. Recommend graphics card list as follows:

Graphic card PN	Description	TDP	Size	On PPC-6151C	On PPC-6171C	On PPC-6191C
GFX-NG710L16-3c	GT710 2G	14W	145x69x14mm	√	√	√
GFX-NG730L16-5C1	GT730 2G	32W	145x69x18mm	√	√	√
GFX-AE9171F16-5N	E9171 4G	40W	145x111x18mm	√	√	√
SKY-QUAD-P2200-BLK	Quadra P2200 5GB	75W	111x200mm	X	√	√