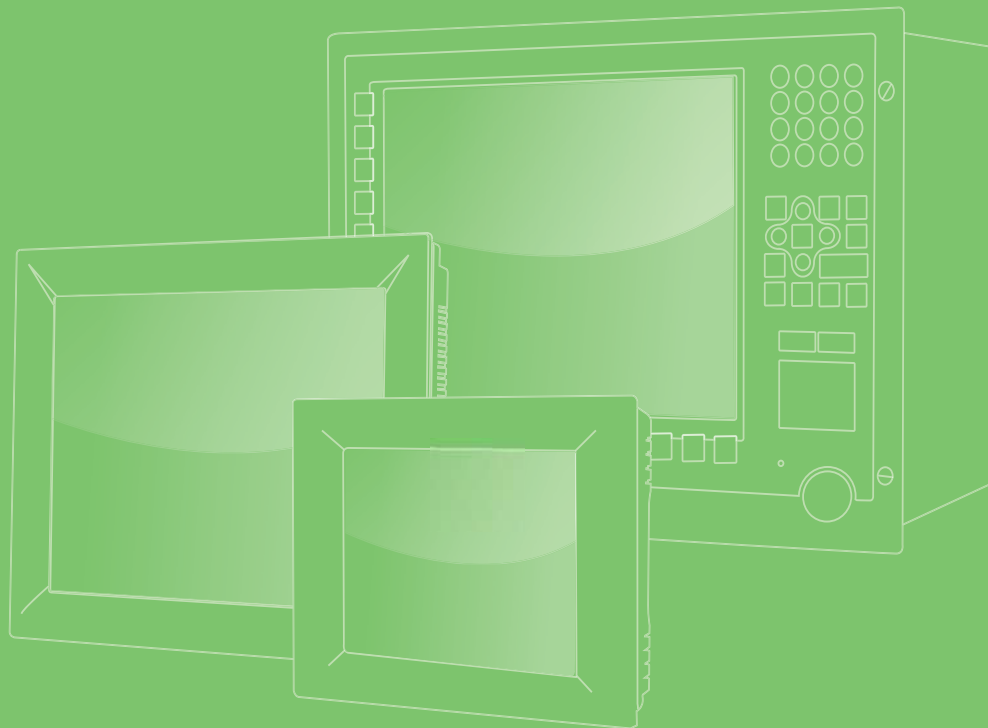


User Manual



IPPC-5211WS Series

Industrial Touch Panel Computers with
Intel® Celeron™ Processors

VICPAS
HMI Parts Center

ADVANTECH

Enabling an Intelligent Planet

Copyright

The documentation and the software included with this product are copyrighted 2015 by Advantech Co., Ltd. All rights are reserved. Advantech Co., Ltd. reserves the right to make improvements in the products described in this manual at any time without notice. No part of this manual may be reproduced, copied, translated or transmitted in any form or by any means without the prior written permission of Advantech Co., Ltd. Information provided in this manual is intended to be accurate and reliable. However, Advantech Co., Ltd. assumes no responsibility for its use, nor for any infringements of the rights of third parties, which may result from its use.

Acknowledgements

Intel is a trademark of Intel Corporation.

Microsoft Windows and MS-DOS are registered trademarks of Microsoft Corp.

All other product names or trademarks are properties of their respective owners.

This Manual Covers the Following Model:

- IPPC-5211WS Series

Product Warranty (2 years)

Advantech warrants to you, the original purchaser, that each of its products will be free from defects in materials and workmanship for two years from the date of purchase.

This warranty does not apply to any products which have been repaired or altered by persons other than repair personnel authorized by Advantech, or which have been subject to misuse, abuse, accident or improper installation. Advantech assumes no liability under the terms of this warranty as a consequence of such events.

Because of Advantech's high quality-control standards and rigorous testing, most of our customers never need to use our repair service. If an Advantech product is defective, it will be repaired or replaced at no charge during the warranty period. For out-of-warranty repairs, you will be billed according to the cost of replacement materials, service time and freight. Please consult your dealer for more details.

If you think you have a defective product, follow these steps:

1. Collect all the information about the problem encountered. (For example, CPU speed, Advantech products used, other hardware and software used, etc.) Note anything abnormal and list any onscreen messages you get when the problem occurs.
2. Call your dealer and describe the problem. Please have your manual, product, and any helpful information readily available.
3. If your product is diagnosed as defective, obtain an RMA (return merchandise authorization) number from your dealer. This allows us to process your return more quickly.
4. Carefully pack the defective product, a fully-completed Repair and Replacement Order Card and a photocopy proof of purchase date (such as your sales receipt) in a shippable container. A product returned without proof of the purchase date is not eligible for warranty service.
5. Write the RMA number visibly on the outside of the package and ship it prepaid to your dealer.

Declaration of Conformity

CE

This product has passed the CE test for environmental specifications when shielded cables are used for external wiring. We recommend the use of shielded cables. This kind of cable is available from Advantech. Please contact your local supplier for ordering information.

FCC Class A

Note: This equipment has been tested and found to comply with the limits for a Class A digital device, pursuant to part 15 of the FCC Rules. These limits are designed to provide reasonable protection against harmful interference when the equipment is operated in a commercial environment. This equipment generates, uses, and can radiate radio frequency energy and, if not installed and used in accordance with the instruction manual, may cause harmful interference to radio communications. Operation of this equipment in a residential area is likely to cause harmful interference in which case the user will be required to correct the interference at his own expense.

Technical Support and Assistance

1. Visit the Advantech web site at <http://support.advantech.com> where you can find the latest information about the product.
2. Contact your distributor, sales representative, or Advantech's customer service center for technical support if you need additional assistance. Please have the following information ready before you call:
 - Product name and serial number
 - Description of your peripheral attachments
 - Description of your software (operating system, version, application software, etc.)
 - A complete description of the problem
 - The exact wording of any error messages

Safety Instructions

1. Read these safety instructions carefully.
2. Keep this User Manual for later reference.
3. Disconnect this equipment from any AC outlet before cleaning. Use a damp cloth. Do not use liquid or spray detergents for cleaning.
4. For plug-in equipment, the power outlet socket must be located near the equipment and must be easily accessible.
5. Keep this equipment away from humidity.
6. Put this equipment on a reliable surface during installation. Dropping it or letting it fall may cause damage.
7. The openings on the enclosure are for air convection. Protect the equipment from overheating. **DO NOT COVER THE OPENINGS.**
8. Make sure the voltage of the power source is correct before connecting the equipment to the power outlet.
9. Position the power cord so that people cannot step on it. Do not place anything over the power cord.
10. All cautions and warnings on the equipment should be noted.
11. If the equipment is not used for a long time, disconnect it from the power source to avoid damage by transient overvoltage.
12. Never pour any liquid into an opening. This may cause fire or electrical shock.
13. Never open the equipment. For safety reasons, the equipment should be opened only by qualified service personnel.
14. If one of the following situations arises, get the equipment checked by service personnel:
 - The power cord or plug is damaged.
 - Liquid has penetrated into the equipment.
 - The equipment has been exposed to moisture.
 - The equipment does not work well, or you cannot get it to work according to the user's manual.
 - The equipment has been dropped and damaged.
 - The equipment has obvious signs of breakage.
15. **DO NOT LEAVE THIS EQUIPMENT IN AN ENVIRONMENT WHERE THE STORAGE TEMPERATURE MAY GO BELOW -20° C (-4° F) OR ABOVE 60° C (140° F). THIS COULD DAMAGE THE EQUIPMENT. THE EQUIPMENT SHOULD BE IN A CONTROLLED ENVIRONMENT.**
16. **CAUTION: DANGER OF EXPLOSION IF BATTERY IS INCORRECTLY REPLACED. REPLACE ONLY WITH THE SAME OR EQUIVALENT TYPE RECOMMENDED BY THE MANUFACTURER, DISCARD USED BATTERIES ACCORDING TO THE MANUFACTURER'S INSTRUCTIONS.**

The sound pressure level at the operator's position according to IEC 704-1:1982 is no more than 70 dB (A).

DISCLAIMER: This set of instructions is given according to IEC 704-1. Advantech disclaims all responsibility for the accuracy of any statements contained herein.

Caution! *Danger of explosion if battery is incorrectly replaced. Replace only with the same or equivalent type recommended by the manufacturer. Dispose of used batteries according to the manufacturer's instructions.*



Attention! Danger d'explosion si la pile est remplacée de façon incorrecte. Remplacez seulement avec le même type ou équivalent recommandé par le fabricant. disposer des piles usagées selon les instructions du fabricant.

Contents

Chapter 1	General Information	1
1.1	Introduction	2
1.2	Specifications	2
	1.2.1 System Kernel.....	2
	1.2.2 I/O Ports.....	2
	1.2.3 O/S support.....	2
	1.2.4 Safety and Environment.....	3
1.3	LCD Specifications	3
1.4	Touchscreen Specifications	4
1.5	Power	4
1.6	I/O Ports Arrangement	4
	Figure 1.1 I/O Port Arrangement	4
1.7	Mounting Type	5
	1.7.1 VESA mounting.....	5
	1.7.2 Foot system mounting.....	5
	1.7.3 Arm system mounting	5
1.8	Dimensions	6
	Figure 1.2 IPPC-5211WS Dimensions	6
Chapter 2	System Setup	7
2.1	System Setup	8
	Figure 2.1 Unpack the Package	8
	Figure 2.2 Power Connector and Power Lines	9
	Figure 2.3 Power Receptor & Button Pin Assignment	9
2.1.1	Installing the Drivers	9
2.2	Transport and Unpacking	10
2.3	Mounting Type	10
	2.3.1 VESA mounting.....	10
	2.3.2 Foot system mounting.....	11
	2.3.3 Arm system mounting	12
Chapter 3	Features in Windows Embedded	13
3.1	Features in Windows Embedded Platform	14
3.2	Enhanced Write Filter (EWF)	14
3.3	File-Based Write Filter (FBWF)	16
3.4	HORM	17
3.5	UWF	18
Appendix A	Serial Port Settings	19
A.1	Jumper, Dip switch and Connector location	20
	A.1.1 Top.....	20
	A.1.2 Bottom.....	21
A.2	Jumper setting and Description.....	22
	A.2.1 CMOS Clear Function (CN1)	22
A.3	Switch Setting	22
	A.3.1 Termination Resistor Select (SW3).....	23
A.4	Connector Pin Definition	23
	A.4.1 SATA connector (CN12)	23
	A.4.2 SATA Power connector (CN13).....	24

A.4.3	Mini PCIE slot (MINIPCIE).....	24
A.4.4	CFast slot (CN14).....	25
A.4.5	Power in connector (CN18).....	25
A.4.6	LAN RJ45 connector (CN7,CN8).....	26
A.4.7	USB connector (CN10).....	27
A.4.8	COM1 RS232 connector (CN15).....	27
A.4.9	COM2 RS232/422/485 connector (CN16).....	28

Appendix B **Driver Installation and Configuration..** **29**

B.1	Intel Chipset Software Installation Utility Installation.....	30
B.2	Intel Graphics Driver Installation.....	32
B.3	LAN Driver Installation.....	35
B.4	Intel® Trusted Execution Engine Driver Installation.....	38
B.5	Windows 7 USB 3.0 Driver Installation.....	42
B.6	Advantech EC Driver Installation.....	45
B.7	Advantech EC Brightness Control Tool Installation.....	47
B.8	Advantech EC Watchdog Timer Driver Installation.....	49
B.9	Advantech LMsensor Driver Installation.....	53

Appendix C **BIOS Setup 55**

C.1	Introduction.....	56
C.2	Entering Setup.....	56
C.2.1	Main Setup.....	57
C.2.2	Advanced BIOS Features Setup.....	58
C.2.3	Chipset Configuration.....	68
C.2.4	Security.....	69
C.2.5	Boot.....	70
C.2.6	Save & Exit.....	71

Chapter 1

General Information

1.1 Introduction

The IPPC-5211WS 21.5" fully sealed stainless steel multi-touch panel PC is IP69K rated and has a detachable product portfolio designed for OEMs and process manufacturing. It supports special functions via iDoor, iKey and an antenna, and is designed for HMIs which require better performance and functionality of machine-level interfaces used in Machinet-to-Machine (M2M), Internet of Things (IoT) etc which require extra protection for hygienic and harsh environments where the intrusion of dust, condensation and water jets is possible.

The IPPC-5211WS can also perform a touch shut-down to avoid accidental operation.

- The detachable accessory module support various mounting types by a flange connection adapter.
 - VESA system
 - The arm and foot system
- IP 69K is the highest standard in waterproofing. The customer can choose front side only or all around with IP69K.
- All of the IO ports can be locked by screws in order to avoid unintended unplugging during assembly.
- With the iDoor module, the IO parts can be easily and flexibly expanded.

1.2 Specifications

1.2.1 System Kernel

- **CPU:** Intel® Celeron Processor J1900
- **BIOS:** AMI UEFI BIOS
- **VGA:** Integrated in Intel® Celeron™ J1900
- **Ethernet:** 10/100/1000Base-T x 2
- **Watchdog Timer:** EC watchdog timer; 1.0 second timeout period
- **Storage:** CFast (optional), SSD (optional)

1.2.2 I/O Ports

- 10/100/1000 Mbps RJ45 x2
- RS-232 x 1, RS-232/RS-485/RS-422 x 1
- USB 2.0 x 1
- USB 3.0 x 1
- iDoor x 1(optional)
- Waterproof Wireless Antenna x 1(optional)

1.2.3 O/S support

- Microsoft® Windows
 - Windows Embedded Standard 7 (64bit)
 - Windows Embedded 8 Standard (64bit)
 - Windows 7 (32bit/64bit)
 - Windows 8 (64bit)

1.2.4 Safety and Environment

Safety

- FCC Class A
- CE certificated
- Waterproof standard
 - The front bezel is compliant with IP69k protection
 - The all around IP69K protection with detachable accessory

Environment

- **Operating Temperature:** 0 ~ 50° C (32 ~ 122° F)
- **Storage Temperature:** -20 ~ 60° C (-4 ~ 140° F)
- **Humidity:** 40°C @ 10~95% relative humidity (non-condensing)
- **Vibration:**
 - With CFast: 2 Grms (5~500 Hz)
 - With HDD: 1 Grms (5 ~ 500 Hz)
 - (Operating, random vibration)

1.3 LCD Specifications

Display Type	TFT LED LCD
Size	21.5"
Maximum Resolution	1920 x 1080 (Full HD)
Maximum Colors	16.7M
Viewing Angle (CR≥10)	178° /178°
Luminance (cd / m2)	300
Contrast Ratio	5000:1
Operating Temperature	0 ~ 60° C (32 ~ 140° F)
Backlight Lifetime	50,000 hours
Backlight	LED

Note! *There might be several bright or dark pixels on the LCD. This phenomenon is normal in today's LCD manufacturing. Inspection criteria are following specifications defined by LCD vendor.*



1.4 Touchscreen Specifications

- **Touch Type:** Projected Capacitive Touch
- **Base Glass Construction:** Tempered glass
- **Resolution:** 4096 x 4096
- **Light Transmission:** 90% ± 3% (Measured by BYK-Gardner)
- **Controller:** USB Interface

1.5 Power

- **Input Voltage:** 24V_{DC} +/- 20% (the fuse will become an open circuit if the input level exceeds 32 V_{DC})
- **Typical:** 24 V_{DC} @ 1.7Amp for IPPC-5211WS

1.6 I/O Ports Arrangement

The arrangement of the I/O ports is shown in Figure 1.1

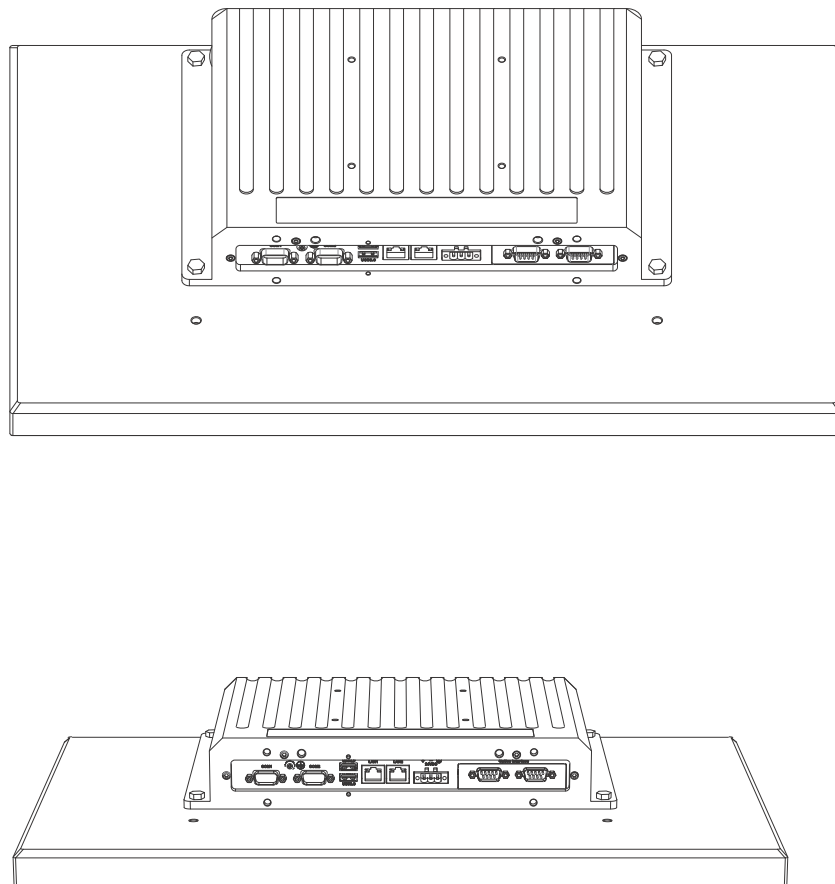


Figure 1.1 I/O Port Arrangement

1.7 Mounting Type

1.7.1 VESA mounting

1. Please ensure VESA equipment dimension as 100 x 100 mm.
2. Take screws from the accessory box.
3. Insert the screws into every screw holes and fasten them. These screws will push the VESA mounting and fix the unit.

1.7.2 Foot system mounting

1. Please ensure that the accessory module which is equipped with four parts.
 - a). The first part is the main structure and is in the shape of a triangle. The purpose of this main structure is for connecting between the front panel and the foot system in order to fulfill the various applications in different production lines.
 - b). And there are two circle covers. One is like a pie and another one is like a doughnut. Both of them are very slim but rugged. The diameter of the circle in the upper and lower side of the triangle are exactly the same. Therefore, the two circle covers can be exchanged based on different applications for the arm or foot system.
 - c). The 4th part is the long-trapezoid piece that is used to cover the triangle to make it waterproof for plugging the cable in to the rear of the IO ports of the computer.
2. Assemble the accessory module and a metal tube which customer prepare by themselves.
3. And then, put IPPC-5211WS on the accessory module and insert the screws into every screw holes and fasten them. These screws will push the accessory and fix the unit.

1.7.3 Arm system mounting

1. Please ensure that the accessory module which is equipped with four parts.
 - a). The first part is the main structure and is in the shape of a triangle. The purpose of this main structure is for connecting between the front panel and the arm system in order to fulfill the various applications in different production lines.
 - b). And there are two circle covers. One is like a pie and another one is like a doughnut. Both of them are very slim but rugged. The diameter of the circle in the upper and lower side of the triangle are exactly the same. Therefore, the two circle covers can be exchanged based on different applications for the arm or foot system.
 - c). The 4th part is the long-trapezoid piece that is used to cover the triangle to make it waterproof for plugging the cable in to the rear of the IO ports of the computer.
2. Assemble the accessory module and a metal tube which customer prepare by themselves.
3. And then, put IPPC-5211WS on the accessory module and insert the screws into every screw holes and fasten them. These screws will push the accessory and fix the unit.

1.8 Dimensions

IPPC-5211WS Series

- **Weight:** 15.8 kg
- **Dimensions (W x H x D):** 555 x 346.5 x 81 (21.85" x 13.64" x 3.19")

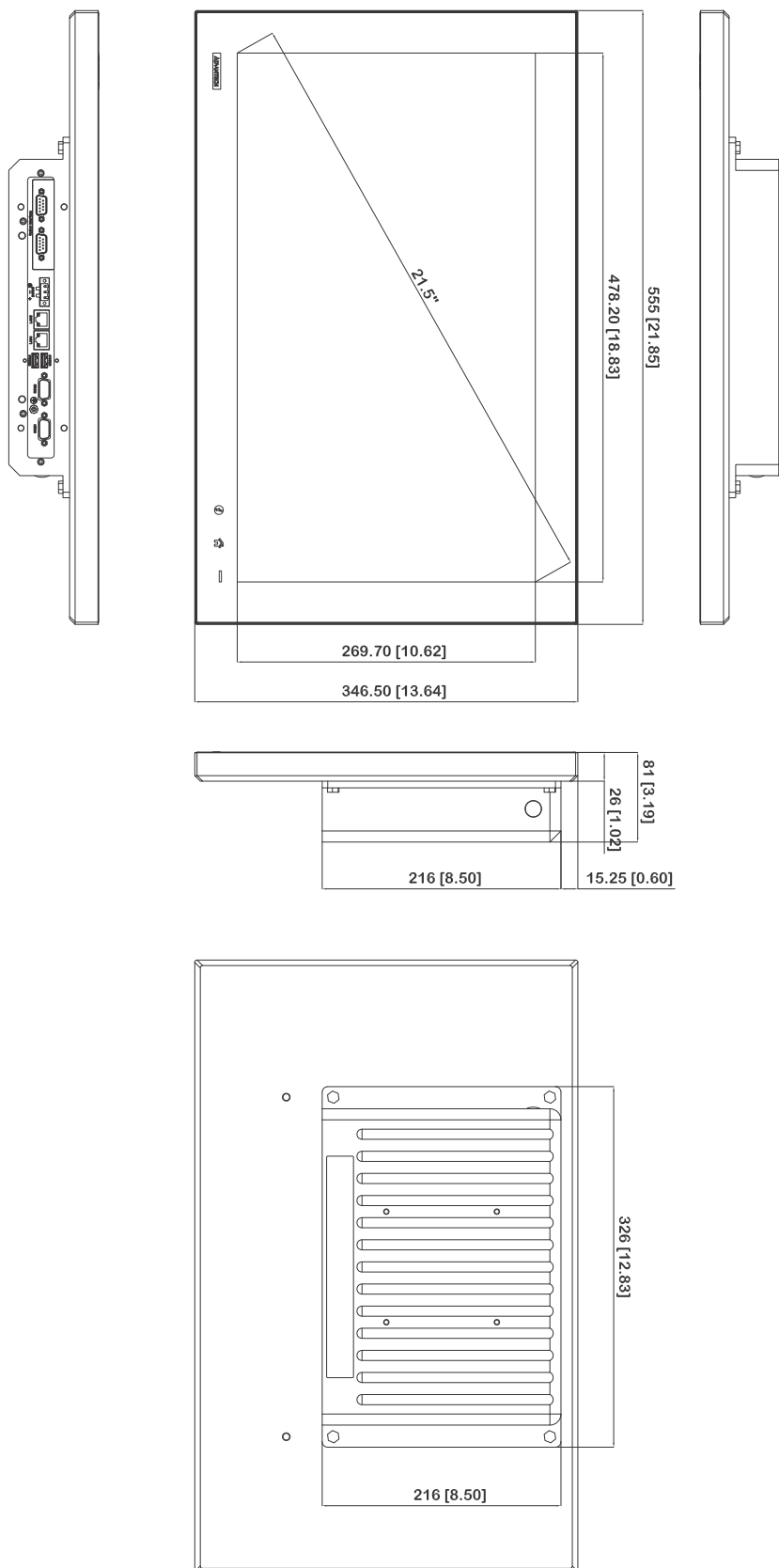


Figure 1.2 IPPC-5211WS Dimensions

Chapter 2

System Setup

2.1 System Setup

You can easily get IPPC started by following the below steps.

1. Unpack the IPPC package. Check the packing list at the beginning of this manual to make sure all items have been included.



Figure 2.1 Unpack the Package

Warning! *It is suggested to turn OFF system power as you plug in or pull out the memory card, even though the CompactFlash memory is hot swappable.*



Il est suggéré de désactiver l'alimentation du système que vous branchez ou retirez le carte mémoire, même si la mémoire CompactFlash est remplaçable à chaud.

2. Connect the power connector to the 24 V_{DC} power lines. The power lines can either be of some power adapter or in-house power source.

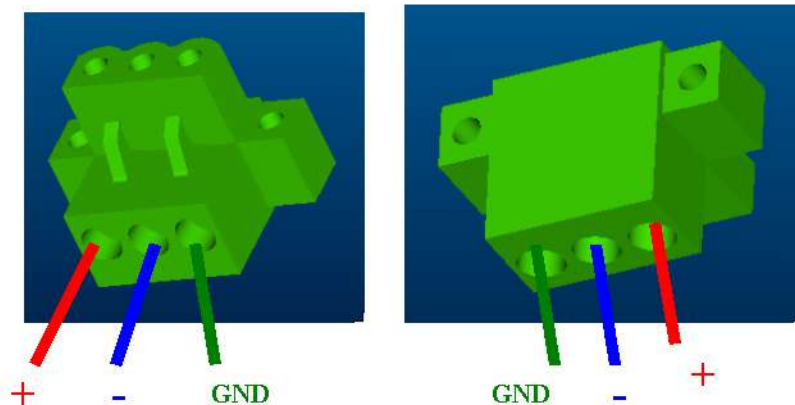


Figure 2.2 Power Connector and Power Lines

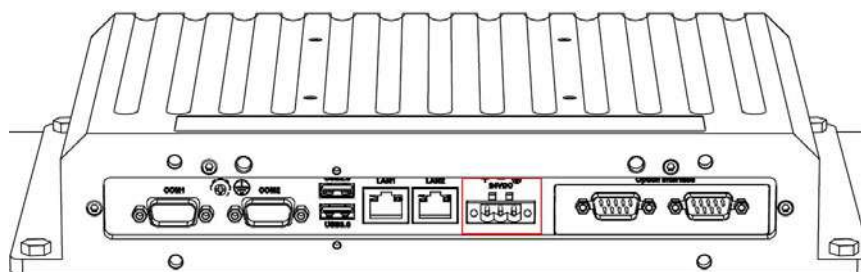


Figure 2.3 Power Receptor & Button Pin Assignment

3. Plug the power lines into the system power receptor.
4. Supply power to the system

2.1.1 Installing the Drivers

After installing your system software, you will be able to set up the Ethernet, VGA, and touchscreen functions. All drivers are stored in a CDROM disc entitled “IPPC-5211WS” which can be found in your accessory box.

The various drivers in the CD-ROM disc have their own text files which help users install the drivers and understand their functions. These files are a very useful supplement to the information in this manual.

Note! *The drivers and utilities used for the IPPC-5211WS panel PCs are subject to change without notice. If in doubt, check Advantech's website or contact our application engineers for the latest information regarding drivers and utilities.*



2.2 Transport and Unpacking

When accepting a delivery, please check the packaging for visible transport damage and check the delivery for completeness by comparing it with your order. If you notice any shipping damage or inconsistencies between the contents and your order, please inform the responsible delivery service immediately.

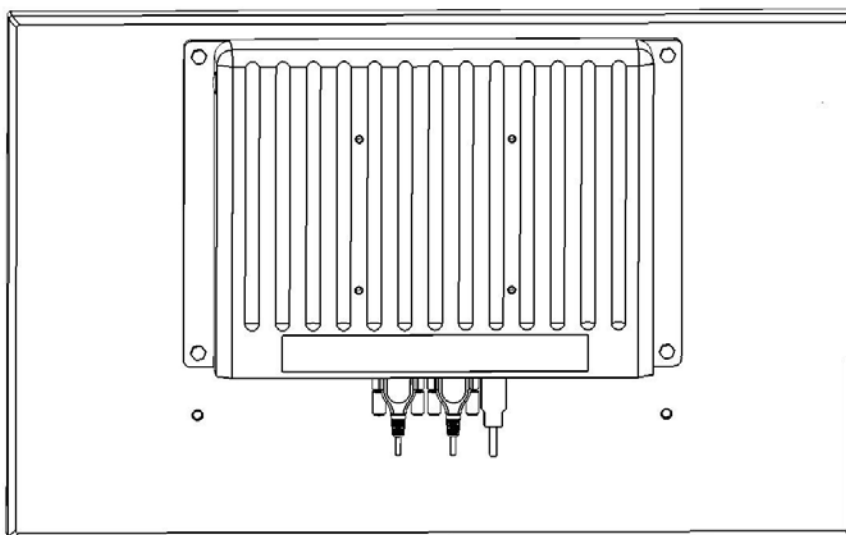
During transport, the IPPC should be protected from excessive mechanical stress. If the IPPC is transported or stored without packaging, shocks, vibrations, pressure and moisture may impact the unprotected unit. A damaged packaging indicates that ambient conditions have already had a massive impact on the device. Therefore, please use the original packaging during transportation and storage.

If the IPPC is transported in cold weather or is exposed to extreme variations in temperature, make sure that moisture (condensation) does not build up on or inside the HMI device. Moisture can result in short-circuits in electrical circuits and damage the device. To avoid that, please store the IPPC in a dry place and bring the IPPC to room temperature before starting it up. If condensation occurs, a delay time of approximately 12 hours must be allowed to make sure the IPPC is completely dry before the IPPC is switched on.

2.3 Mounting Type

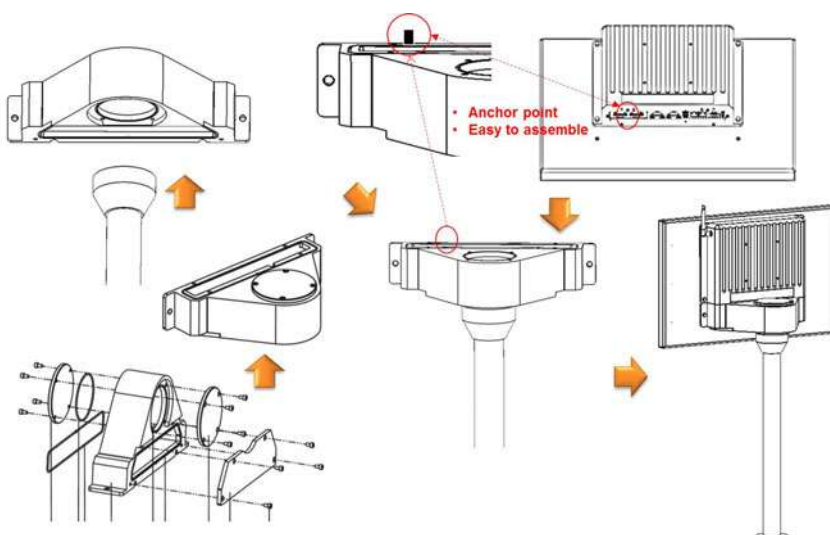
2.3.1 VESA mounting

1. Please ensure VESA equipment dimension as 100 x 100 mm.
2. Take screws from the accessory box.
3. Insert the screws into every screw holes and fasten them. These screws will push the VESA mounting and fix the unit.



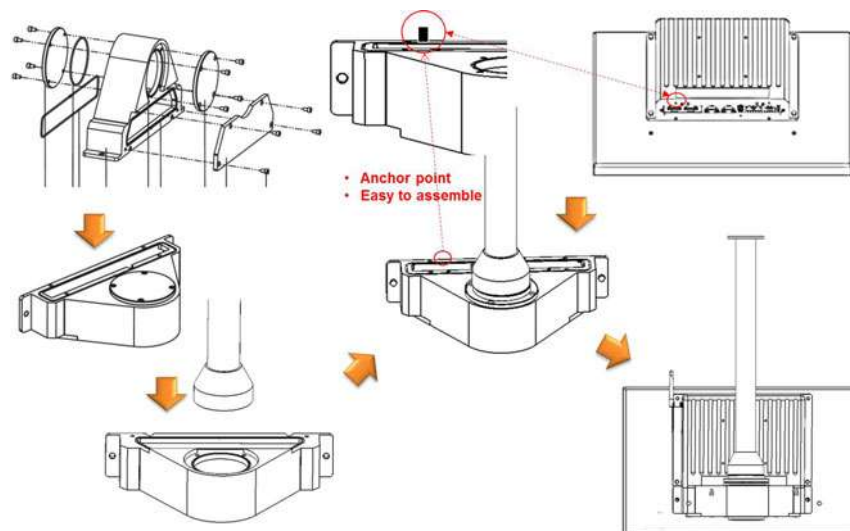
2.3.2 Foot system mounting

1. Please ensure that the accessory module which is equipped with four parts.
 - a). The first part is the main structure and is in the shape of a triangle. The purpose of this main structure is for connecting between the front panel and the foot system in order to fulfill the various applications in different production lines.
 - b). And there are two circle covers. One is like a pie and another one is like a doughnut. Both of them are very slim but rugged. The diameter of the circle in the upper and lower side of the triangle are exactly the same. Therefore, the two circle covers can be exchanged based on different applications for the arm or foot system.
 - c). The 4th part is the long-trapezoid piece that is used to cover the triangle to make it waterproof for plugging the cable in to the rear of the IO ports of the computer.
2. Assemble the accessory module and a metal tube which customer prepare by themselves.
3. And then, put IPPC-5211WS on the accessory module and insert the screws into every screw holes and fasten them. These screws will push the accessory and fix the unit.



2.3.3 Arm system mounting

1. Please ensure that the accessory module which is equipped with four parts.
 - a). The first part is the main structure and is in the shape of a triangle. The purpose of this main structure is for connecting between the front panel and the arm system in order to fulfill the various applications in different production lines.
 - b). And there are two circle covers. One is like a pie and another one is like a doughnut. Both of them are very slim but rugged. The diameter of the circle in the upper and lower side of the triangle are exactly the same. Therefore, the two circle covers can be exchanged based on different applications for the arm or foot system.
 - c). The 4th part is the long-trapezoid piece that is used to cover the triangle to make it waterproof for plugging the cable in to the rear of the IO ports of the computer.
2. Assemble the accessory module and a metal tube which customer prepare by themselves.
3. And then, put IPPC-5211WS on the accessory module and insert the screws into every screw holes and fasten them. These screws will push the accessory and fix the unit.



Chapter 3

Features in Windows Embedded

3.1 Features in Windows Embedded Platform

IPPC product supports the Windows Embedded platform. This section outlines the important features (EWF, FBWF and HORM), that are provided in WES7, and UWF provided in Windows Embedded 8 Standard.

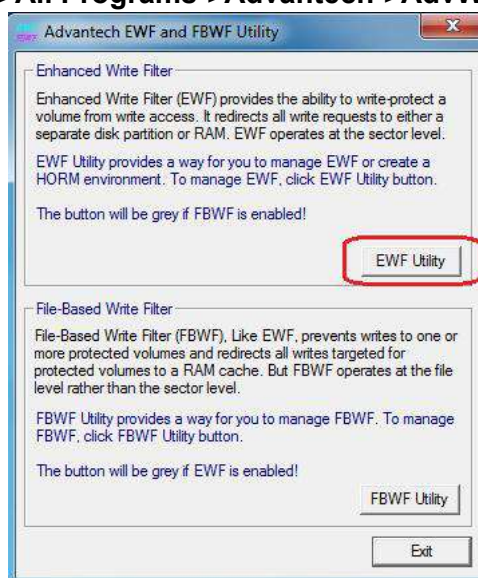
3.2 Enhanced Write Filter (EWF)

Enhanced Write Filter (EWF) and File-Based Write Filter (FBWF) redirect all writes targeted at protected volumes to a RAM or disk cache, called an overlay. The overlay stores changes made to the operating system, but is removed when the device is restarted, restoring the device to its original state. Note that there is no disk-based overlay support for Windows Embedded Standard 7.

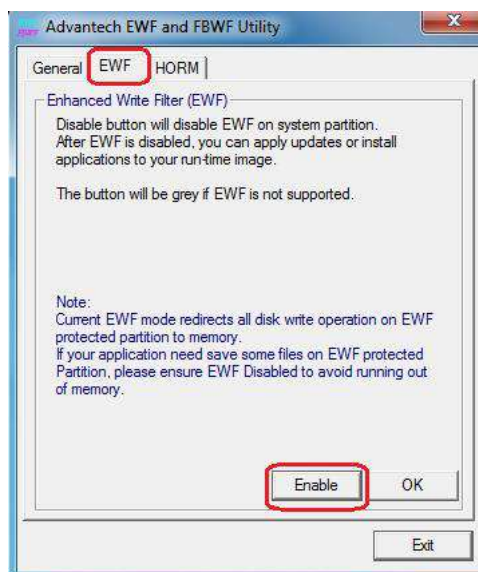
EWF works at the sector level on protected disks and allows you to commit changes so that they persist when the device is restarted. EWF is useful for thin clients that do not need to store cached information or receive frequent updates. Changes made to a system protected by EWF are stored in one or more layers that represent snapshots in time. Applying changes to an image applies all changes made to the operating system during a specific period of time.

Advantech provide utility to operate EWF. Refer below steps if you want to enable.

1. Click **Start Menu->All Programs->Advantech->AdvWF** and click **EWF Utility**



2. Click **EFW tab**, and click **“Enable”** button



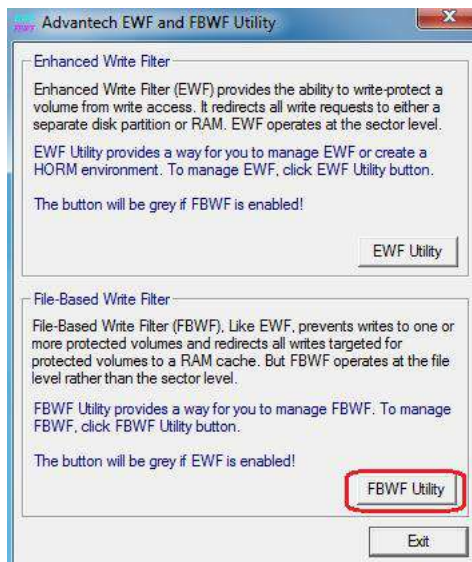
3. After the system is rebooted automatically, EWF enable

3.3 File-Based Write Filter (FBWF)

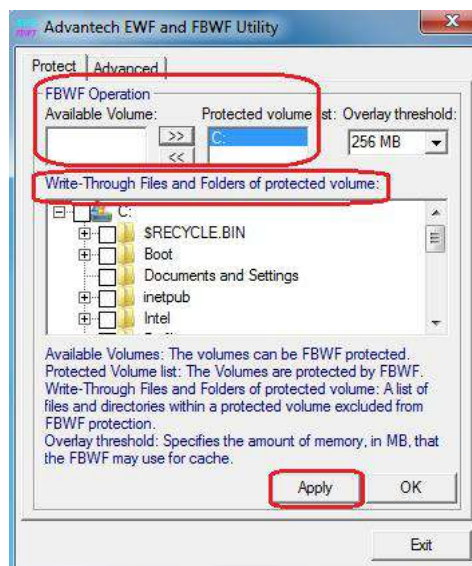
File-Based Write Filter (FBWF) works at the file level instead of the sector level on protected disks. By default, FBWF protects the whole disk, but selective write through exceptions can be granted to specific files and folders. Writes to folders with write-through exceptions will be persisted when the device restarts.

Advantech provide utility to operate FBWF. Refer below steps if you want to enable

1. Click **Start Menu->All Programs->Advantech->AdvWF** and **click FBWF Utility**



2. Move volume you want to protect from “Available Volume” to “Protected Volume” and choose “Write-Through Files and Folders”



3. Click **“Apply”**, and the system is rebooted automatically. Then FBWF enable.

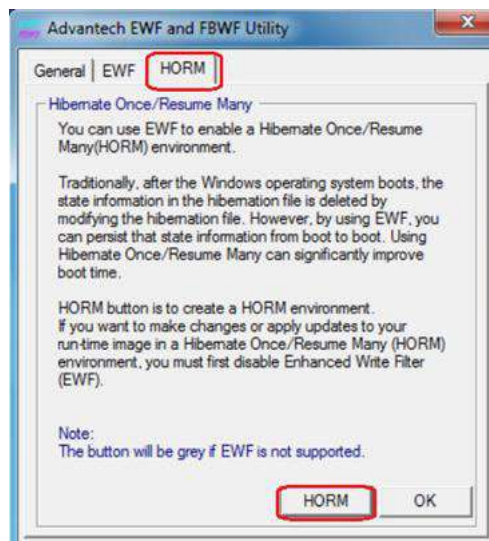
3.4 HORM

HORM stands for Hibernate Once Resume Many. In HORM environment, a single hibernation file is used to boot the system repeatedly. To set a HORM environment, please follow the steps below.

1. Make sure EWF is disabled. You can run OSUnlock to disable EWF.
2. Enable hibernation support: Open the command prompt and type “powercfg -h on”
3. Run “power options” in control panel, and then select “Enable Hibernation” in hibernation pane.

Enable EWF:

1. Run OSLock, and then system reboot automatically.
2. Open those software that customers want to directly use after system resume from hibernation.
3. Hibernate via Advantech HORM utility:
 1. Click **Start Menu->All Programs->Advantech->AdvWF**
 2. Select “Enable Hibernation” in “Power Options”.
 3. Open AdvWF and enable EWF
 4. After the system is rebooted automatically, open AdvWF and click EWF Utility.
 5. Click HORM tab, and click “HORM” button.



3.5 UWF

Unified Write Filter (UWF) is a sector-based write filter that you can use to protect your storage media. UWF intercepts all write attempts to a protected volume and redirects those write attempts to a virtual overlay. This improves the reliability and stability of your device and reduces the wear on write-sensitive media, such as flash memory media like solid-state drives.

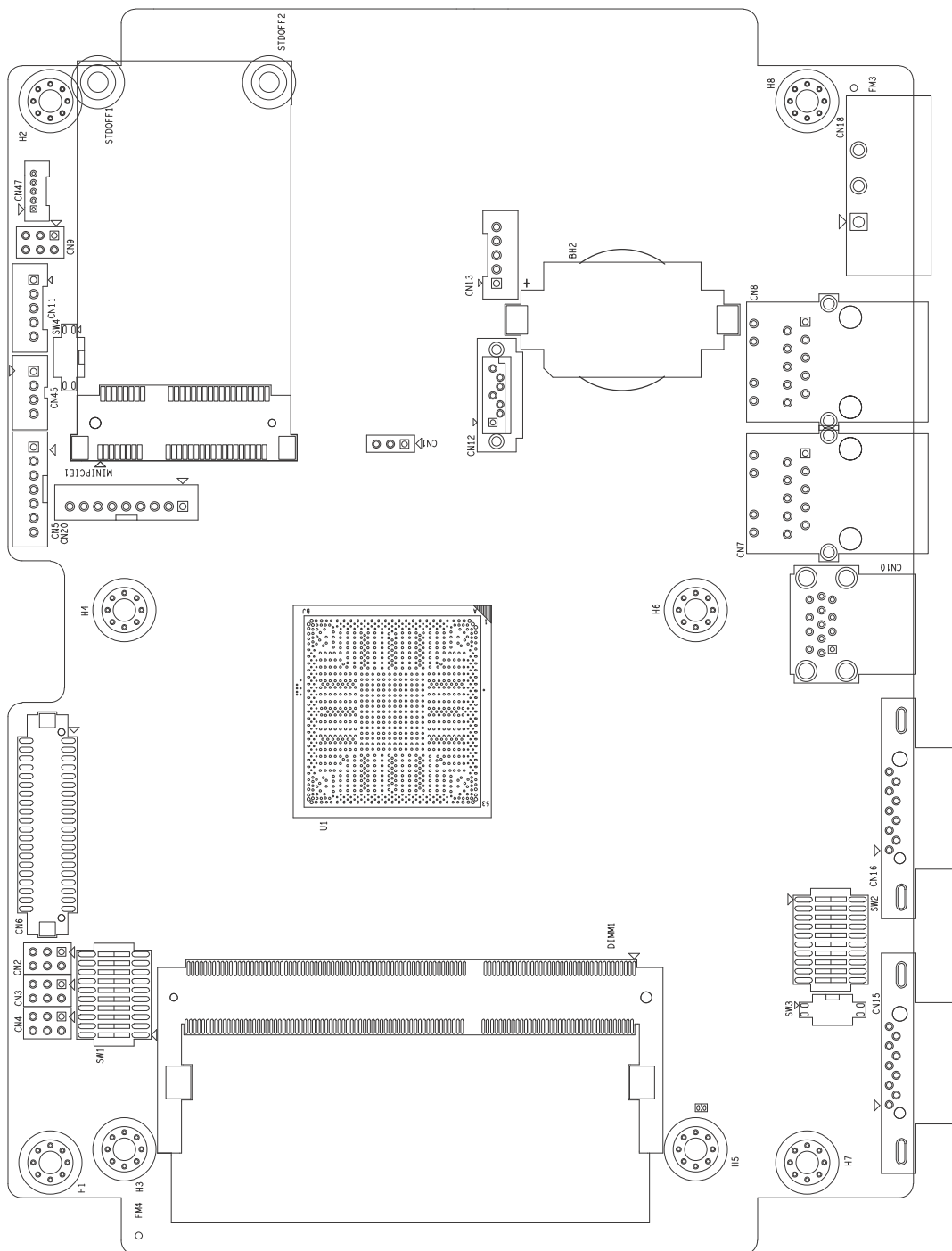
You can use Hibernate Once/Resume Many (HORM) or file and registry filtering exclusions with UWF. UWF is a new feature for Windows Embedded 8 Standard, and is not available as part of Windows 8. UWF integrates the functionality previously available in Enhanced Write Filter (EWF), File-Based Write Filter (FBWF), and Registry Filter in Windows Embedded Standard 7. EWF, FBWF, and Registry Filter are also included separately in Windows Embedded 8 Standard, primarily for backward compatibility.

Appendix **A**

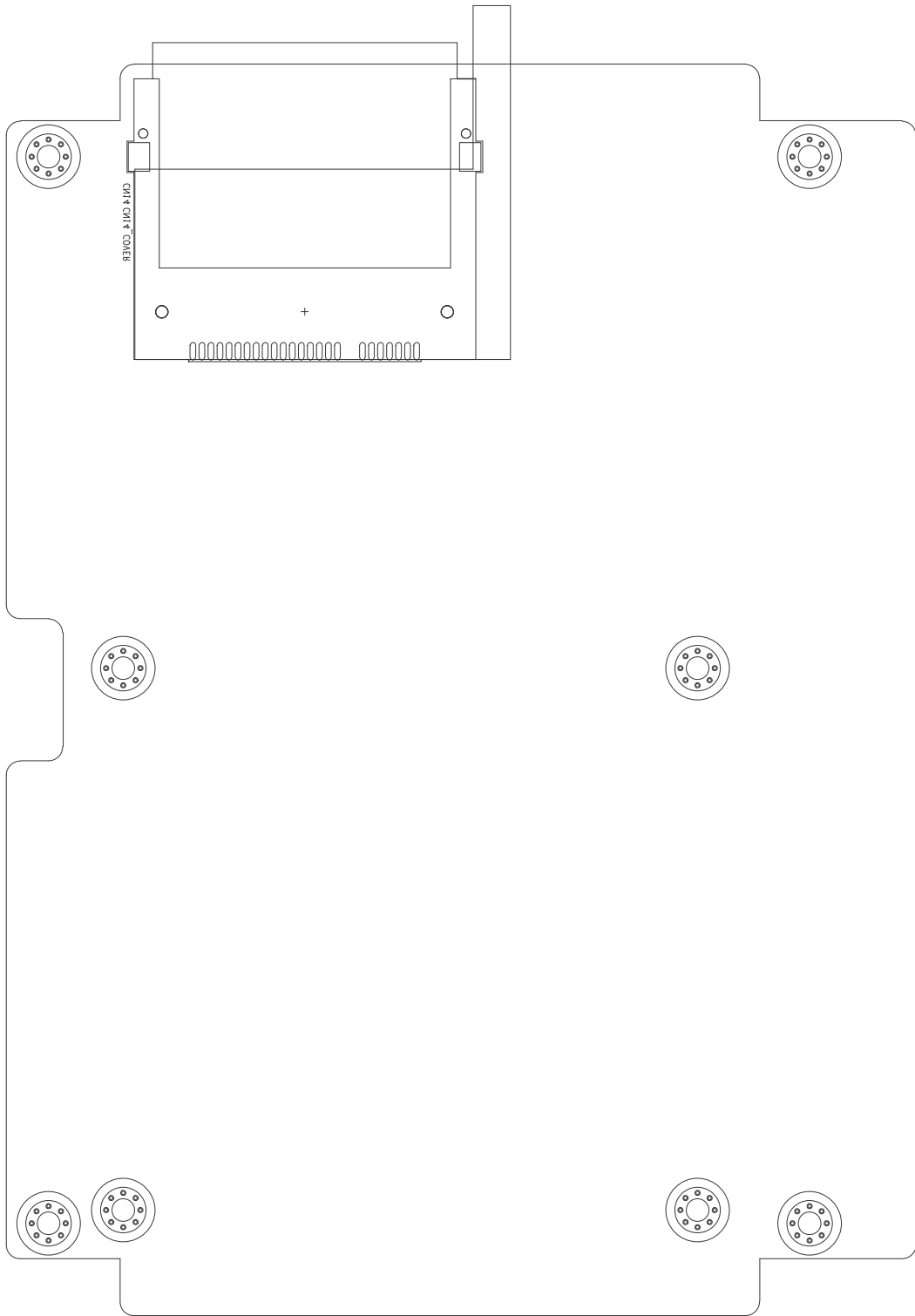
Serial Port Settings

A.1 Jumper, Dip switch and Connector location

A.1.1 Top



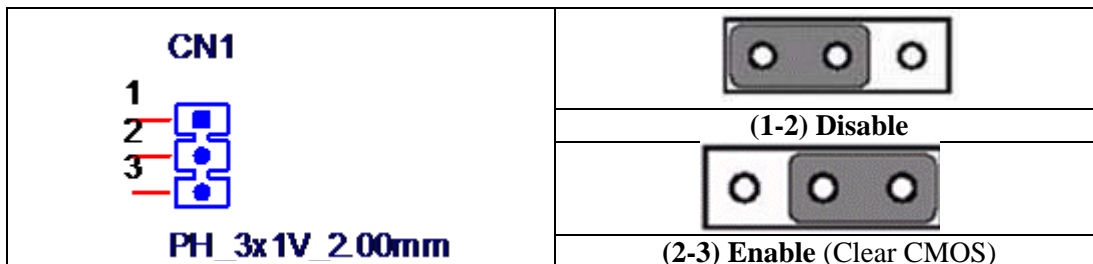
A.1.2 Bottom



A.2 Jumper setting and Description

A.2.1 CMOS Clear Function (CN1)

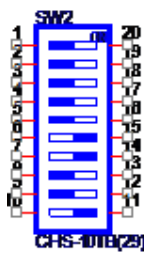
	CMOS Clear Function
Description	This jumper is used to select CMOS Clear Enable/Disable
Default	(1-2)
(2-3)	Clear CMOS
(1-2)	Normal



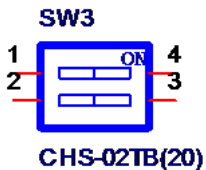
A.3 Switch Setting

COM2 RS232/422/485 mode setting (SW2)

	COM2 RS232/422/485 mode setting	
Description	This switch is used to select COM2 RS232/422/485 mode setting	
Default	RS232 mode	
RS232 Mode	Bit 1,2,3,4,5 ON Bit 6,7,8,9,10 OFF	<p>SW2</p> <p>1 20 2 19 3 18 4 17 5 16 6 15 7 14 8 13 9 12 10 11</p> <p>CHS-101B(28)</p>
RS422 Master Mode	Bit 1,2,3,4,5,10 OFF Bit 6,7,8,9 ON	<p>SW2</p> <p>1 20 2 19 3 18 4 17 5 16 6 15 7 14 8 13 9 12 10 11</p> <p>CHS-101B(28)</p>
RS422 Slave Mode	Bit 1,2,3,4,5 OFF Bit 6,7,8,9,10 ON	<p>SW2</p> <p>1 20 2 19 3 18 4 17 5 16 6 15 7 14 8 13 9 12 10 11</p> <p>CHS-101B(28)</p>

RS485 Mode	Bit 1,2,3,4,5,8,9 OFF Bit 6,7,10 ON	
------------	--	--

A.3.1 Termination Resistor Select (SW3)

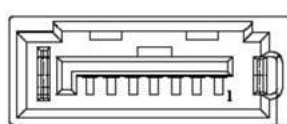
Termination Resistor Select	
Description	This switch is used to select Termination Resistor (120 ohm) for long distance transmission or device matching.
Default	Bit1 off & Bit2 off (DATA+ & RX-)
DATA+	Pin 1
RX-	Pin 2
R_RX+	Pin 3
R_DATA-	Pin 4
	

A.4 Connector Pin Definition

A.4.1 SATA connector (CN12)

1654004659 Serial ATA 7P 1.27mm 180D(M) DIP WATM-07DBN4A3B83.12

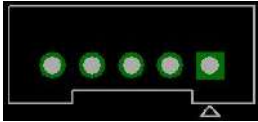
Pin	Signal	Description
1	GND	GND
2	A+	Signal Pair A : TX+/- (Transmit)
3	A-	
4	GND	GND
5	B-	Signal Pair B : RX+/ (Receive)
6	B+	
7	GND	GND



A.4.2 SATA Power connector (CN13)

1655000453 WAFER BOX 2.0mm 5P 180D(M) DIP WO/Pb JIH VEI

Pin	Signal	Description
1	+V3.3SATA	SATA power output 3.3V/1A
2	+V5SATA	SATA power output 5V/1A
3	+V12SATA	SATA power output 12V/0.5A
4	GND	GND
5	GND	GND



A.4.3 Mini PCIE slot (MINIPCIE)

1654002538 MINI PCI E 52P 6.8mm 90D SMD AS0B226-S68N7H

Supports PCI1.1, PCI1.2 Power Definition

Pin	Signal	Description	Pin	Signal	Description
52	+3.3Vaux / +3.3V	PCI1.1 was +3.3V, PCI1.2 was +3.3Vaux	51	Reserved	NC
50	GND		49	Reserved	NC
48	+1.5V		47	Reserved	NC
46	NC	NC	45	Reserved	NC
44	NC	NC	43	PIN43_MPCIE_PWRSEL	The pin to select the Pin 2, 52 power output for +3.3Vaux or +3.3V (PCI1.1 was Reserved and PIC1.2 was GND)
42	NC	NC	41	+3.3Vaux	
40	GND		39	+3.3Vaux	
38	USB_D+	USB serial data interface compliant to the USB 2.0 specification	37	GND	
36	USB_D-		35	GND	
34	GND		33	PETp0	PCI Express differential transmit pair
32	SMB_DATA	SMBus data signal compliant to the SMBus 2.0 specification	31	PETn0	
30	SMB_CLK		29	GND	
28	+1.5V		27	GND	
26	GND		25	PERp0	PCI Express differential receive pair
24	+3.3Vaux		23	PERn0	
22	PERST#	Functional reset to the card	21	GND	
20	W_DISABLE #	Active low signal. This signal is used by the system to disable radio operation on add-in cards that implement radio frequency applications. When implemented, this signal requires a pull-up resistor on the card.	19	Reserved	NC
18	GND		17	Reserved	NC
	Key	Key		Key	Key
16	NC	NC	15	GND	
14	NC	NC	13	REFCLK+	
12	NC	NC	11	REFCLK-	
10	NC	NC	9	GND	
8	NC	NC	7	CLKREQ#	Reference clock request signal
6	1.5V		5	NC	NC
4	GND		3	NC	NC
2	+3.3Vaux / +3.3V	PCI1.1 was +3.3V , PCI1.2 was +3.3Vaux	1	WAKE#	Open Drain active Low signal. This signal is used to request that the system return from a sleep/suspended state to service a function initiated wake event.

* +3.3Vaux was suspend Power , power out to device +3.3V/1.1A

* +3.3V was core power

* +1.5V was core power, power out to device +1.5V/0.5A

A.4.4 CFast slot (CN14)

1653004849 CFast 24P 1.27mm 90D(M) SMD N7G24-A0B2RA-10-0HT-

The host is connected to the CFast Card using a 7+17 pin connector

Pin	Segment	CFast Name	Description
S1	SATA	SGND	Ground for signal integrity
S2	SATA	A+	Signal Pair A : TX+/- (Transmit)
S3	SATA	A-	
S4	SATA	SGND	Ground for signal integrity
S5	SATA	B-	Signal Pair B : RX+/ (Receive)
S6	SATA	B+	
S7	SATA	SGND	Ground for signal integrity
	Key		
	Key		
PC1	PWR/CTL	CDI	NC
PC2	PWR/CTL	GND	GND
PC3	PWR/CTL	TBD	NC
PC4	PWR/CTL	TBD	NC
PC5	PWR/CTL	TBD	NC
PC6	PWR/CTL	TBD	NC
PC7	PWR/CTL	GND	GND
PC8	PWR/CTL	LED1	CF_PHYRDY LED
PC9	PWR/CTL	LED2	CF_HDDA LED
PC10	PWR/CTL	IO1	NC
PC11	PWR/CTL	IO2	NC
PC12	PWR/CTL	IO3	NC
PC13	PWR/CTL	PWR	CFast Power output to Device +3.3V / 1.2A
PC14	PWR/CTL	PWR	
PC15	PWR/CTL	PGND	Ground for Power return
PC16	PWR/CTL	PGND	
PC17	PWR/CTL	CDO	NC

A.4.5 Power in connector (CN18)

1652003104 PLUG-IN BLOCK 3P 5.08mm 90D(M) DIP ME050-50803

Pin	Signal	Description
1	Power IN V+	24VDC +-20% Power in
2	Power IN V- (GND)	
3	GND_EARTH	The GND_EARTH to connect a Screw hole for short with the chassis GND

CN18

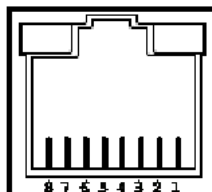
PLUG_3_5.08mm

A.4.6 LAN RJ45 connector (CN7,CN8)

1652002996 PHONE JACK RJ45 14P 90D(M) DIP RTA-195AAK1A

RJ45 Pin	Signal	Description
1	MDI0+	<ul style="list-style-type: none"> In BASE-T: Media Dependent Interface[0]: 1000BASE-T: In MDI configuration, MDI[0]+/- corresponds to BI_DA+/- and in MDI-X configuration MDI[0]+/- corresponds to BI_DB+/-.
2	MDI0-	<ul style="list-style-type: none"> 10BASE-T and 100BASE-TX: In MDI configuration, MDI[0]+/- is used for the transmit pair and in MDIX configuration MDI[0]+/- is used for the receive pair.
3	MDI1+	<ul style="list-style-type: none"> In BASE-T: Media Dependent Interface[1]: 1000BASE-T: In MDI configuration, MDI[1]+/- corresponds to BI_DB+ and in MDI-X configuration MDI[1]+/- corresponds to BI_DA+/-.
6	MDI1-	<ul style="list-style-type: none"> 10BASE-T and 100BASE-TX: In MDI configuration, MDI[1]+/- is used for the receive pair and in MDI-X configuration MDI[1]+/- is used for the transmit pair.
4	MDI2+	<ul style="list-style-type: none"> In BASE-T: Media Dependent Interface[3:2]: 1000BASE-T: In MDI and in MDI-X configuration, MDI[2]+/- corresponds to BI_DC+/- and MDI[3]+/- corresponds to BI_DD+/-. 100BASE-TX: Unused. 10BASE-T: Unused.
5	MDI2-	
7	MDI3+	
8	MDI3-	

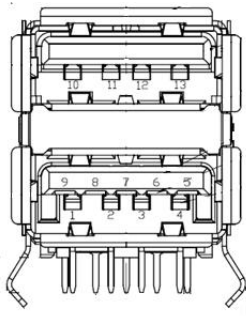
Left LED		Right LED	
10Link	100Link	1000 Link	Active
Off	Orange	Green	Green



A.4.7 USB connector (CN10)

1654010199 USB Conn. 2.0+3.0 13P 90D(F) DIP UEA1112C-UHS6-4

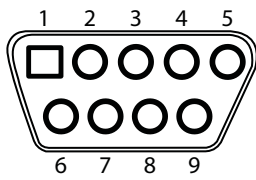
Pin	Signal	Description
1, 10	USB VBUS	USB Power output ,USB2.0 5V/0.5A and USB3.0 5V/0.9A
2, 11	USB_P-	USB2.0 date -
3, 12	USB_P+	USB2.0 date +
4,13	GND	Ground for Power return
5	SSRX-	USB3.0 RX -
6	SSRX+	USB3.0 RX +
7	GND_DRAIN	Ground for signal return
8	SSTX-	USB3.0 TX -
9	SSTX+	USB3.0 TX +



A.4.8 COM1 RS232 connector (CN15)

1654000056 D-SUB Conn. 9P 90D(M) DIP 070241MR009S200ZU

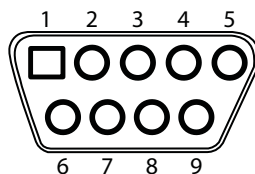
Pin	RS232
1	DCD
2	RX
3	TX
4	DTR
5	GND
6	DSR
7	RTS
8	CTS
9	RI



A.4.9 COM2 RS232/422/485 connector (CN16)

1654000056 D-SUB Conn. 9P 90D(M) DIP 070241MR009S200ZU

Pin	RS232	RS422	RS485
1	DCD	TX-	D-
2	RX	TX+	D+
3	TX	RX+	
4	DTR	RX-	
5	GND	GND	GND
6	DSR		
7	RTS		
8	CTS		
9	RI		



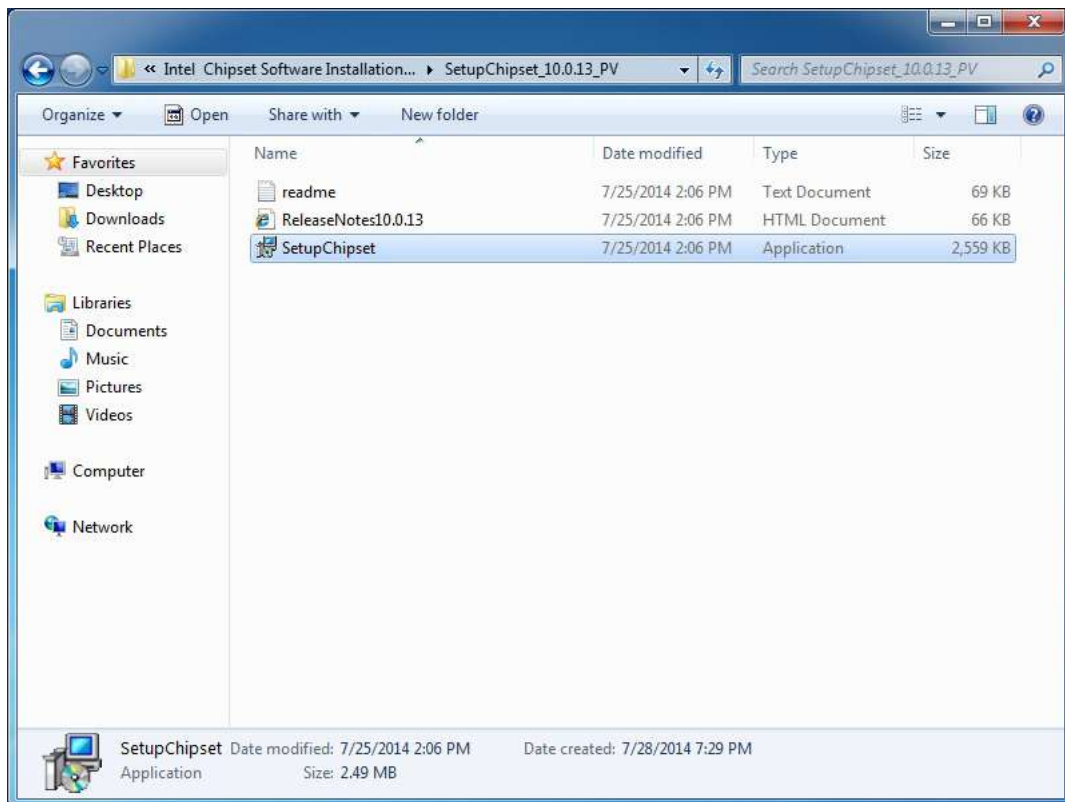
Appendix **B**

Driver Installation and Configuration

B.1 Intel Chipset Software Installation Utility Installation

Follow the steps below to install the Intel Chipset Software Installation Utility:

1. Launch <Driver Root Path>\Intel Chipset Software Installation Utility\SetupChipset_XX.X.XX_PV
2. Install SetupChipset.exe



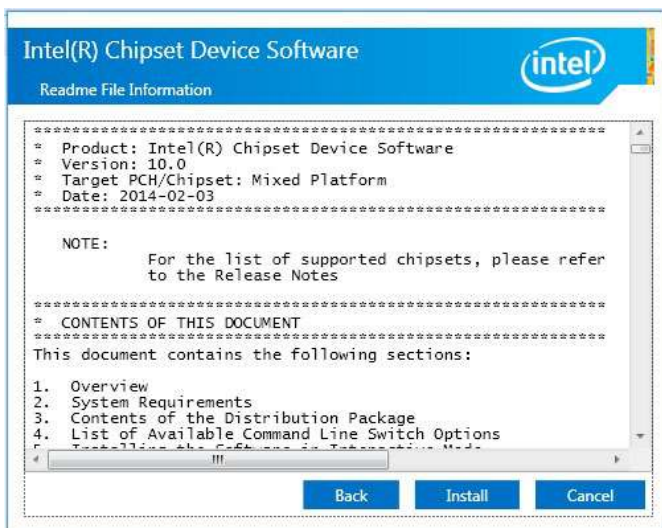
3. Click **Next**



4. Click **Accept**



5. Click **Install**



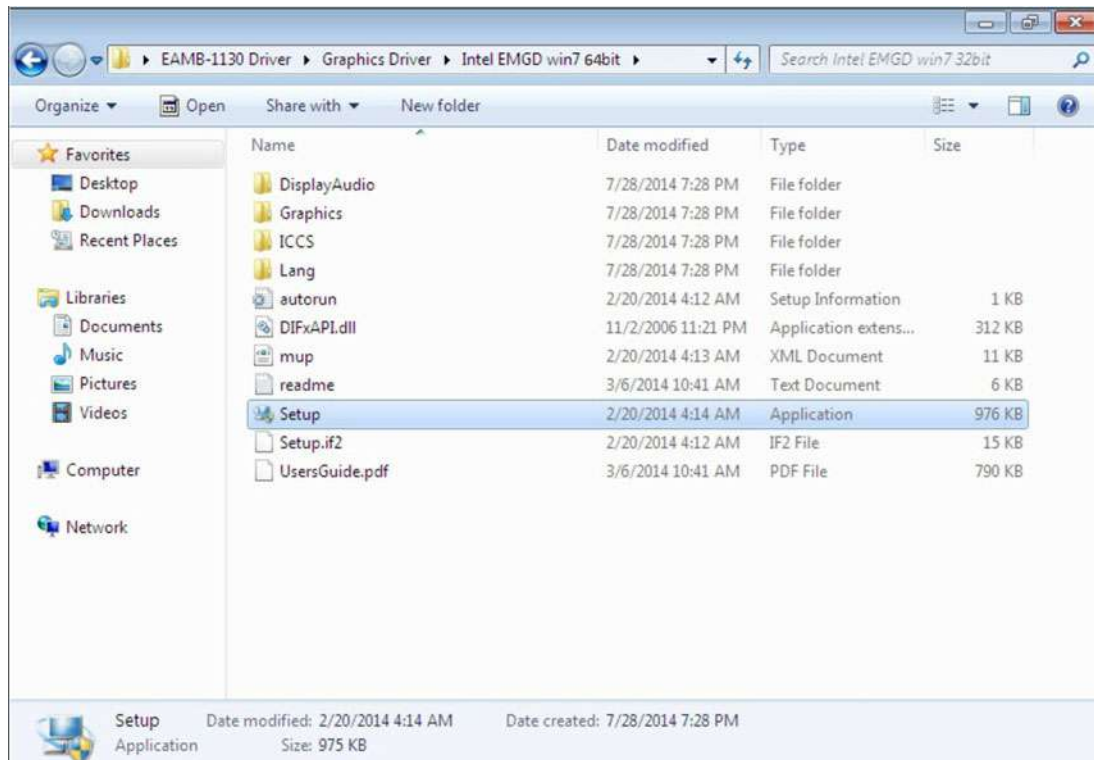
6. Click **Finish**



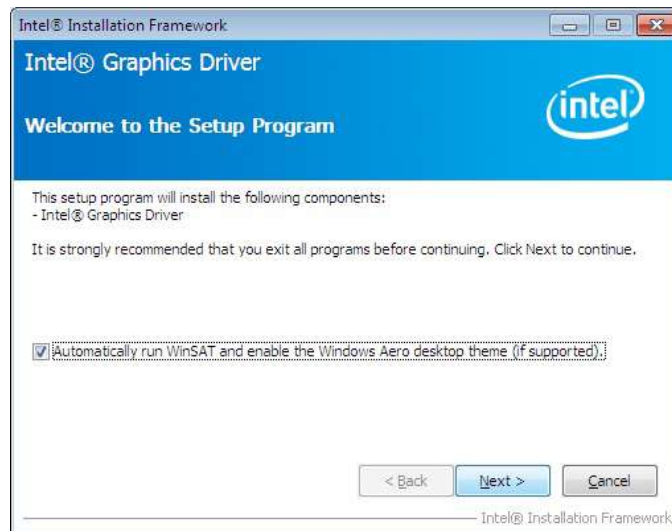
B.2 Intel Graphics Driver Installation

Follow the steps below to install the Intel Graphics driver:

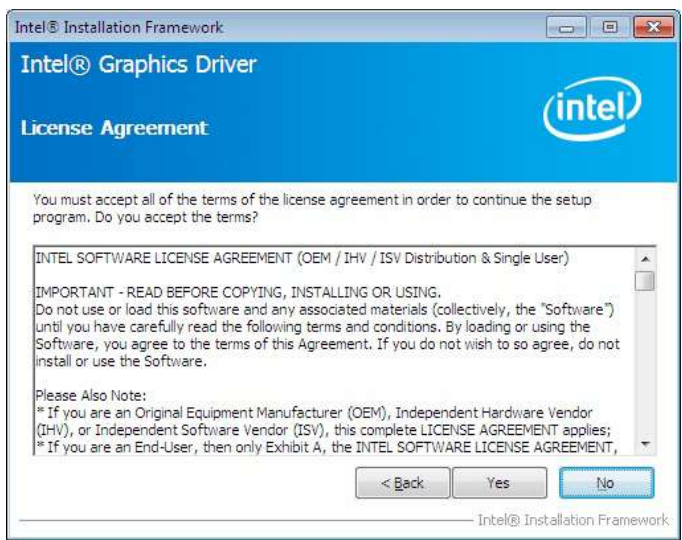
1. Launch folder <Driver Root Path>\Graphics Driver\Intel EMGD win7 XX bit\
2. Install Setp.exe



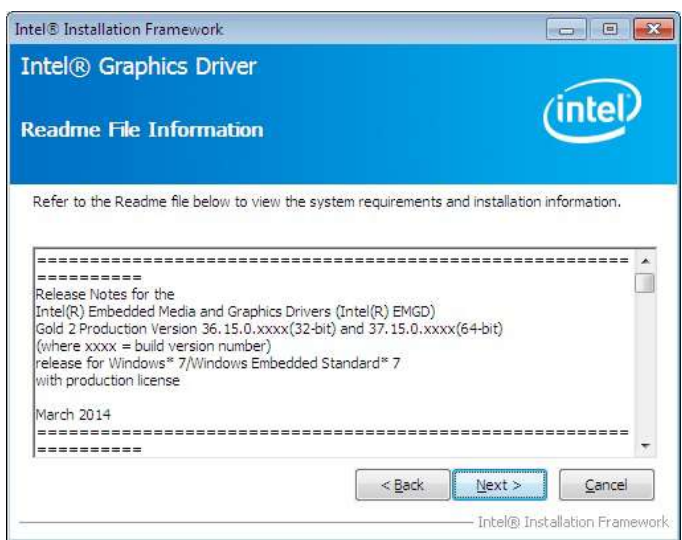
3. Click **Next**



4. Click **Yes**



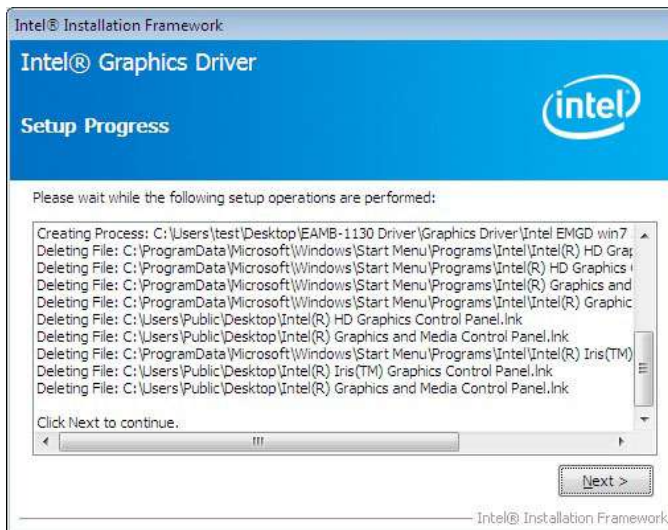
5. Click **Next**



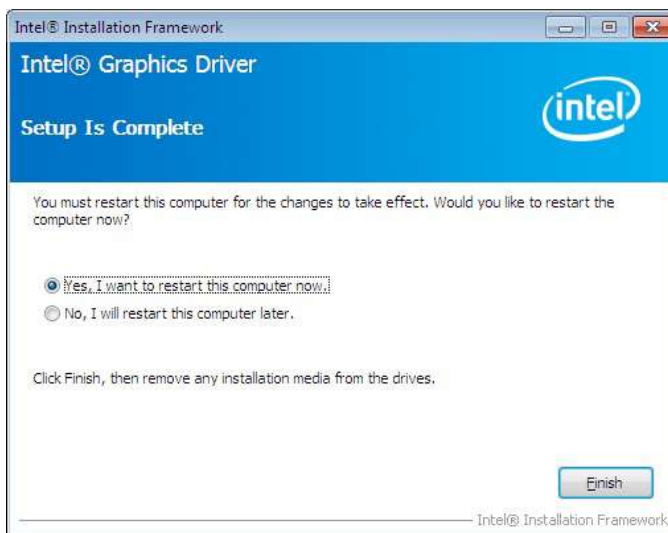
6. Click **Install**



7. Click **Next**



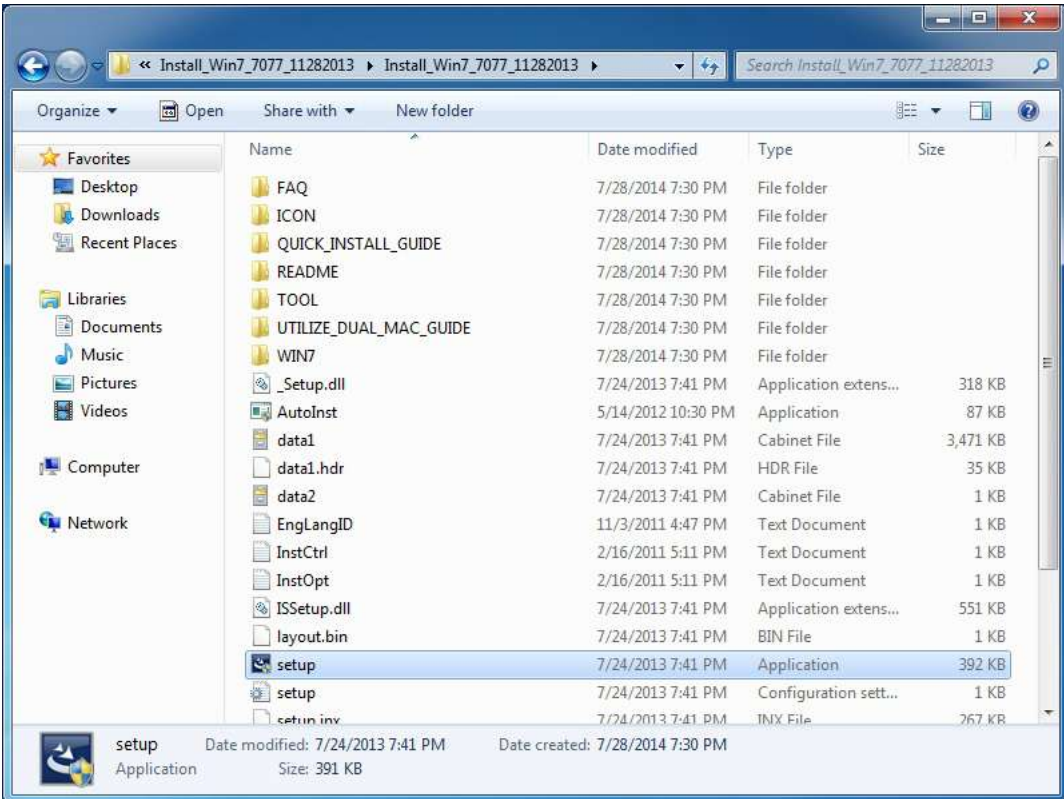
8. Choose **Yes**, then click **Finish** to restart



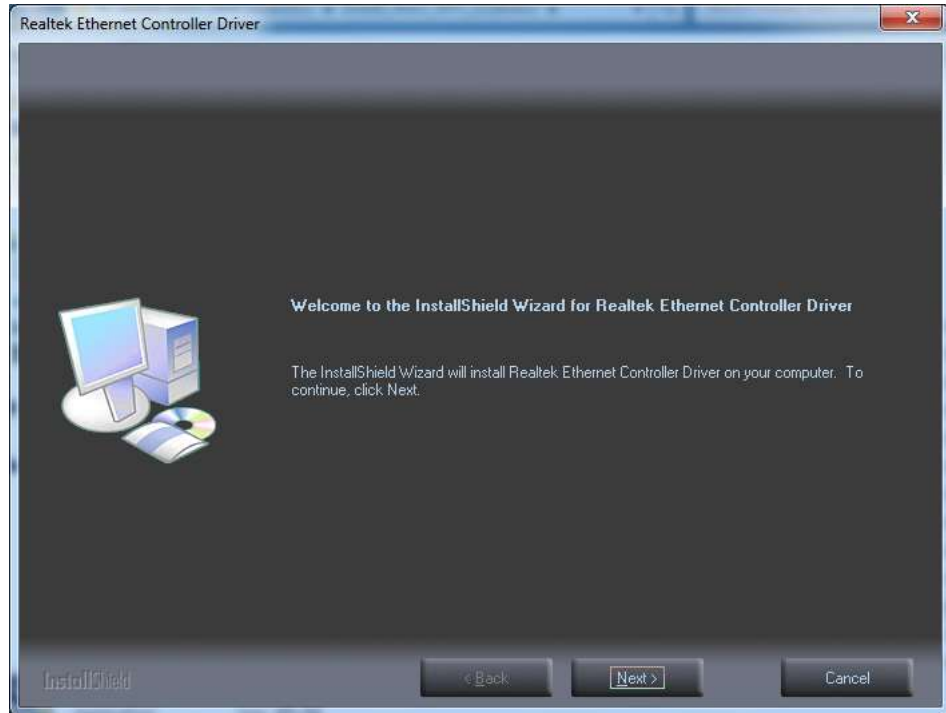
B.3 LAN Driver Installation

Follow the steps below to install the LAN driver:

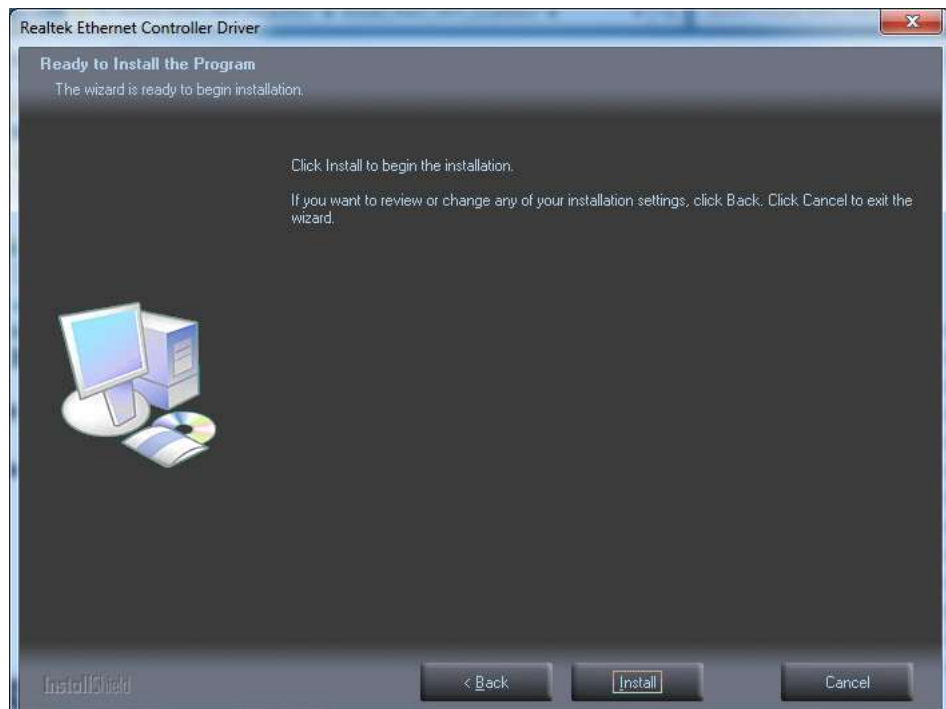
1. Launch folder <Driver Root Path>\LAN\Win7 \Install_Win7_XXX_XXXXXXXX
2. Install setup.exe



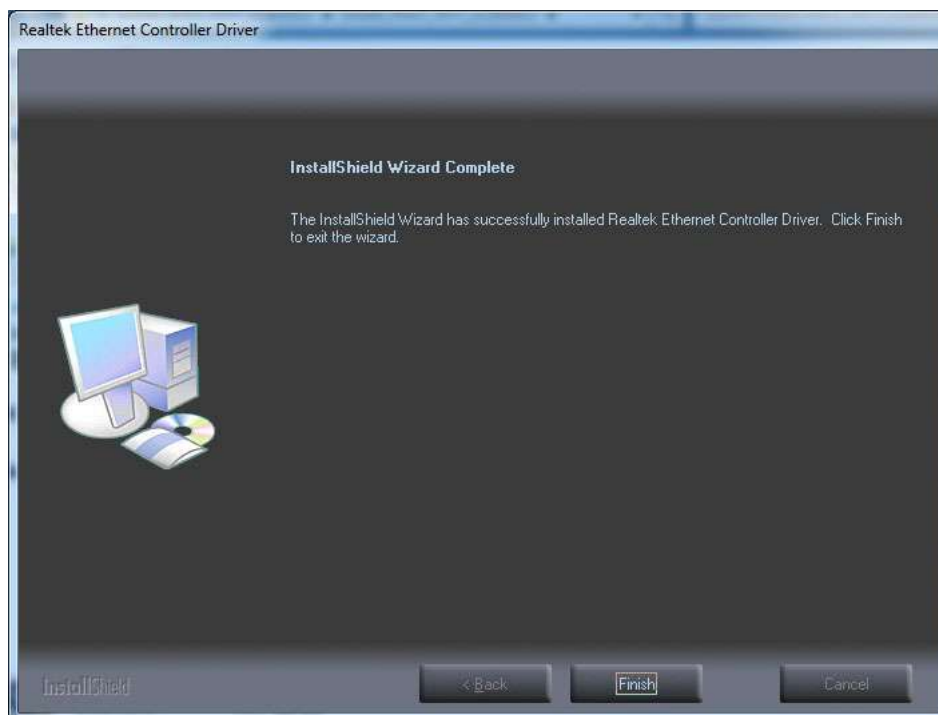
3. Click **Next**



4. Click **Install**



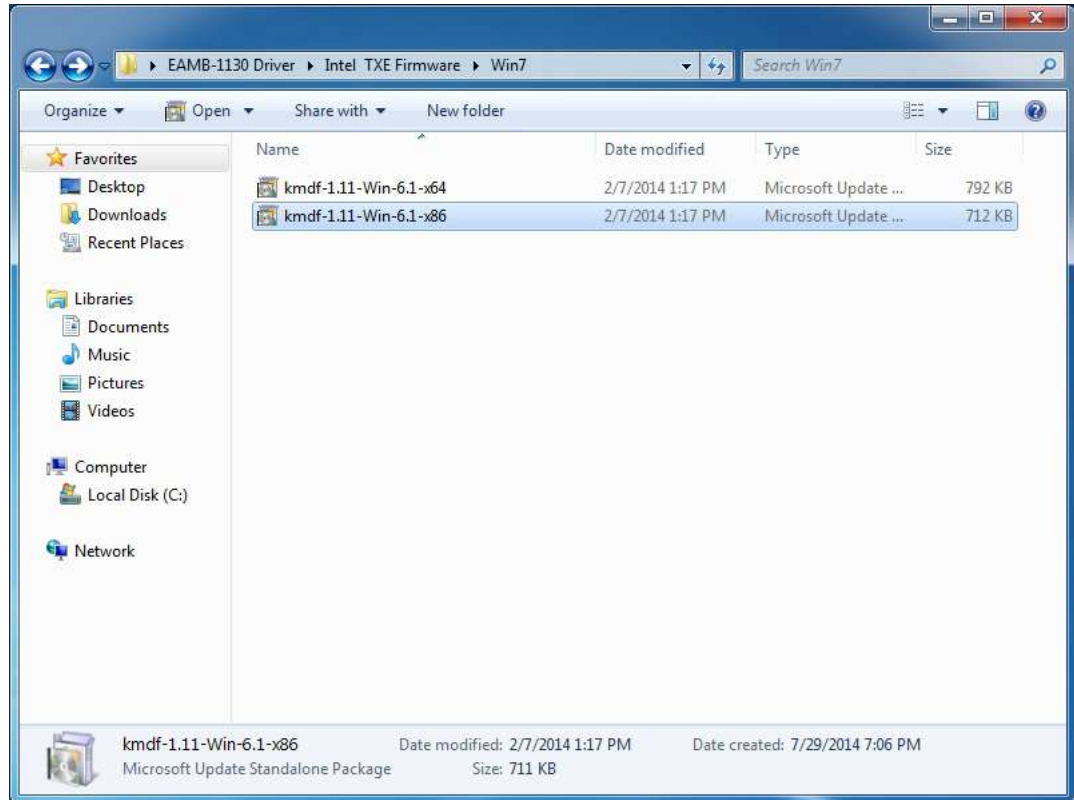
5. Click **Finish**



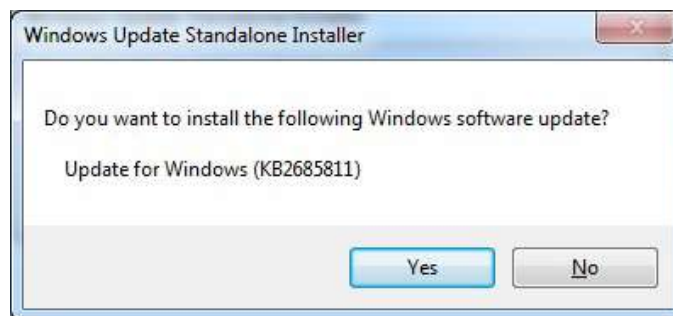
B.4 Intel® Trusted Execution Engine Driver Installation

Follow the steps below to install the Intel Trusted Execution Engine driver:

1. Launch folder <Driver Root Path>\TXE\Intel TXE Firmware\Win7
2. Install kmdf-1.11-Win-6.1-x64.msu



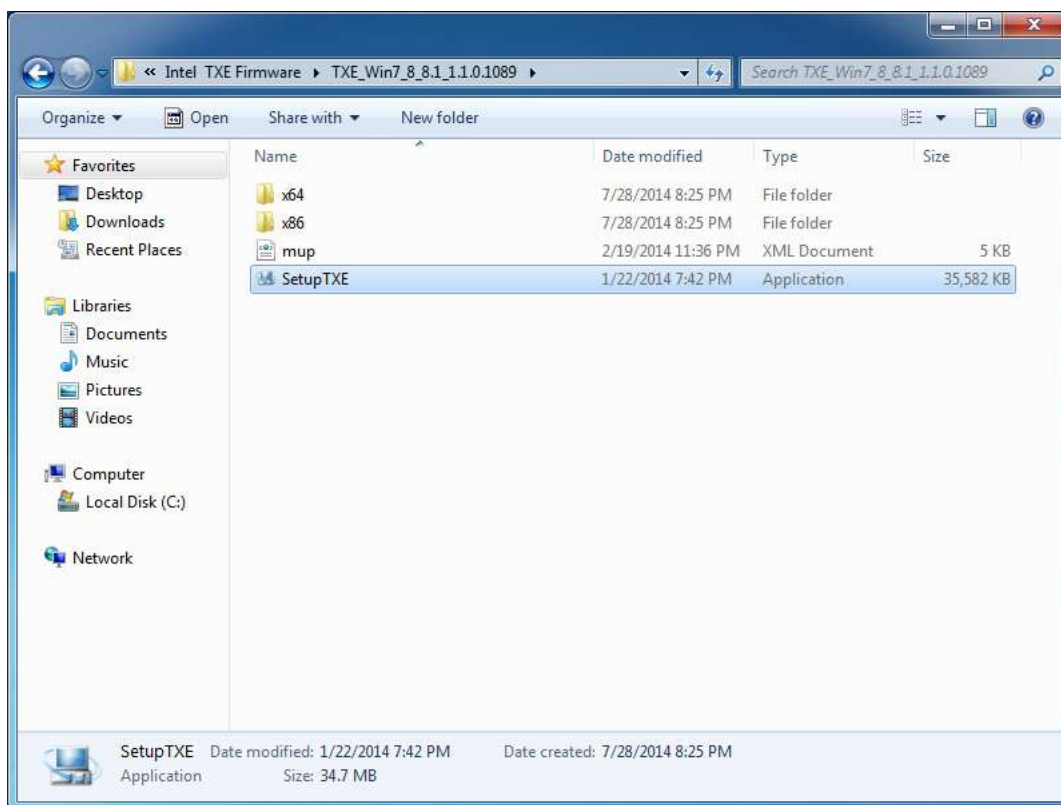
3. Click **Yes**



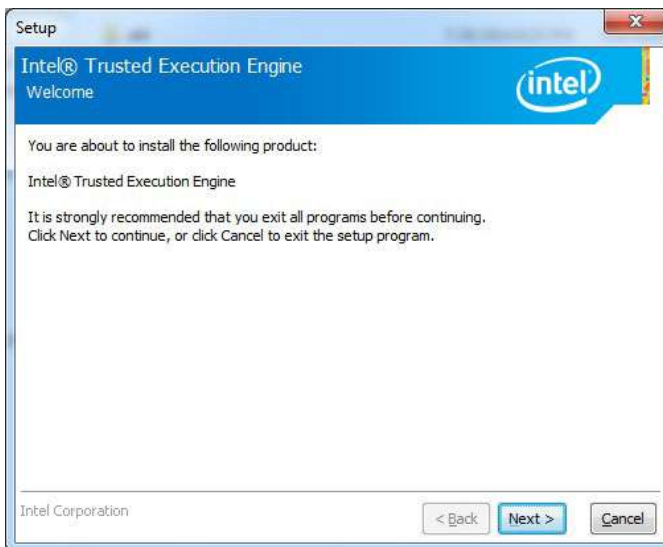
4. Click **Restart Now**, then the system will restart



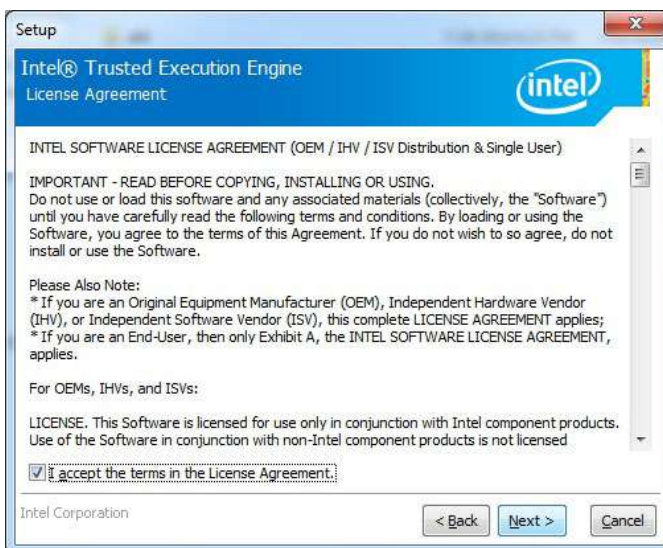
5. Launch folder <Driver Root Path>\TXE\TXE_Win7_X_X.X_X.X.X.XXXX
6. Install SetupTXE.exe



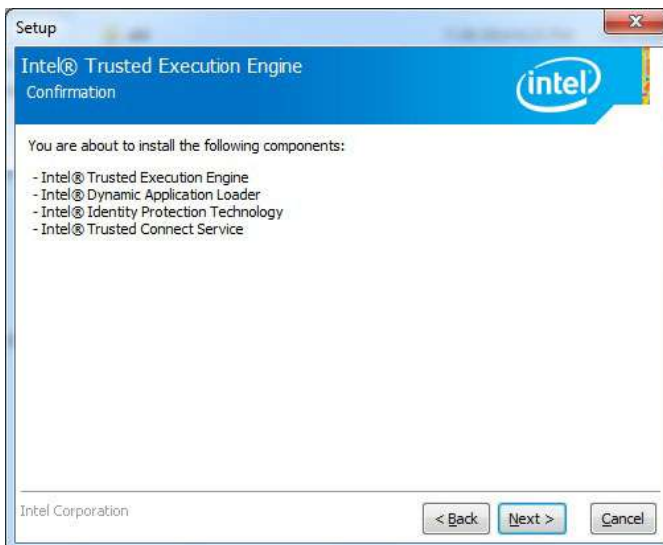
7. Click **Next**



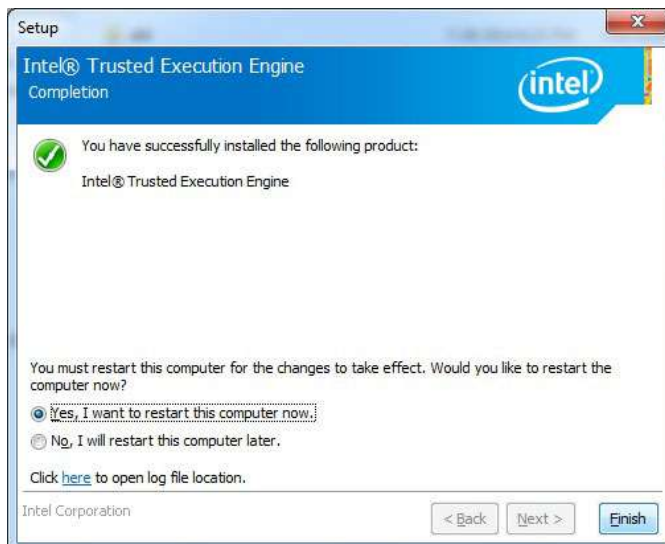
8. Click **Next**



9. Click **Next**



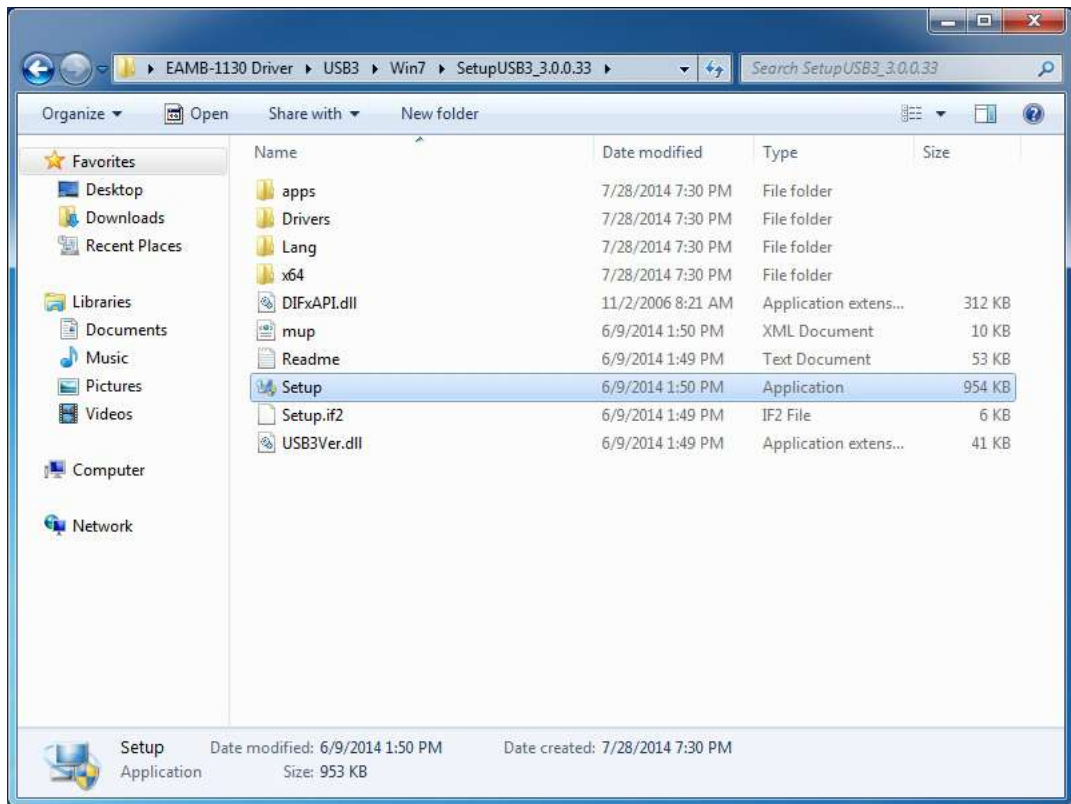
10. Choose **Yes**, then click **Finish** to restart.



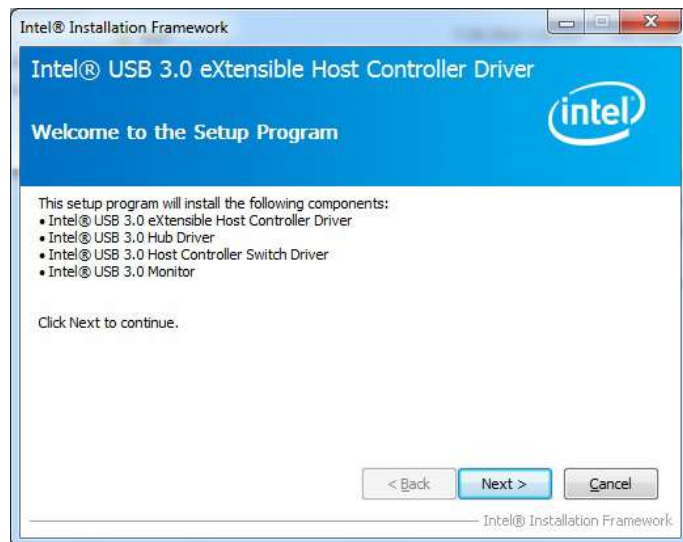
B.5 Windows 7 USB 3.0 Driver Installation

Follow the steps below to install the Windows 7 USB 3.0 driver:

1. Launch folder <Driver Root Path>\USB3\Win7\SetupUSB3_X.X.X.XX
2. Install Setup.exe



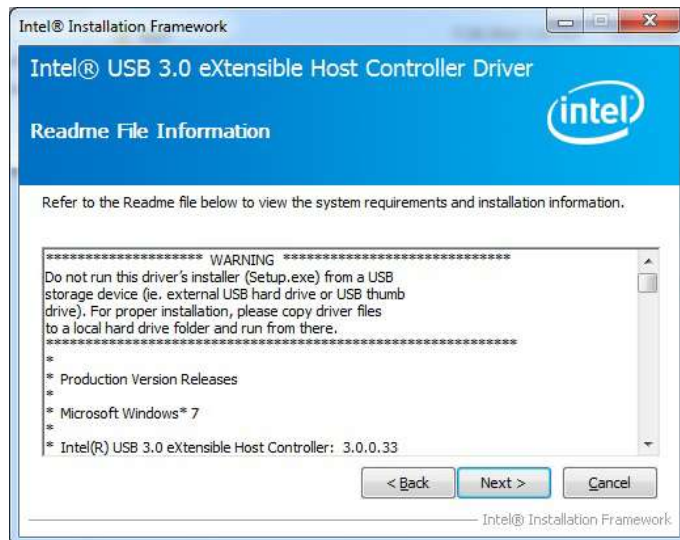
3. Click **Next**



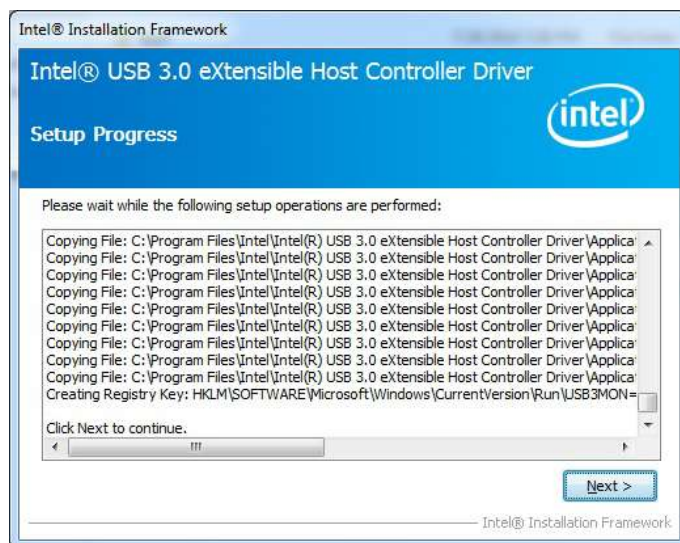
4. Click Yes



5. Click Next



6. Click Next



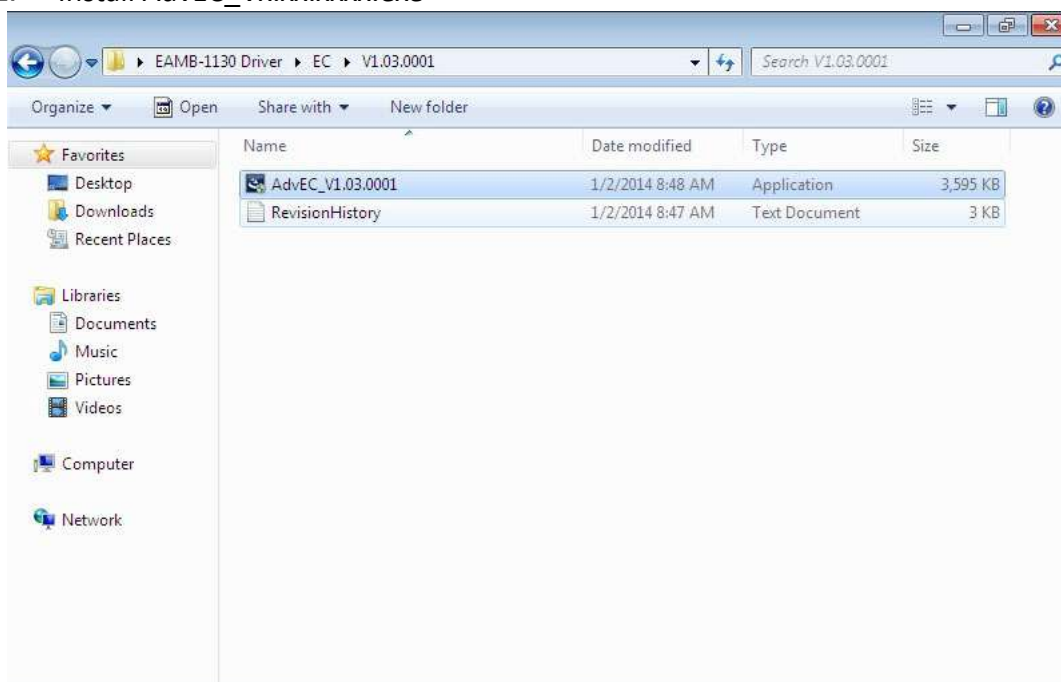
7. Choose **Yes**, then click **Finish** to restart



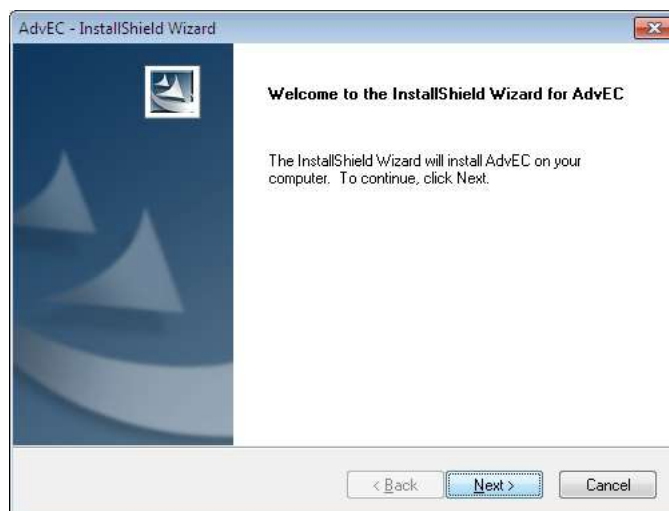
B.6 Advantech EC Driver Installation

Follow the steps below to install the EC drivers:

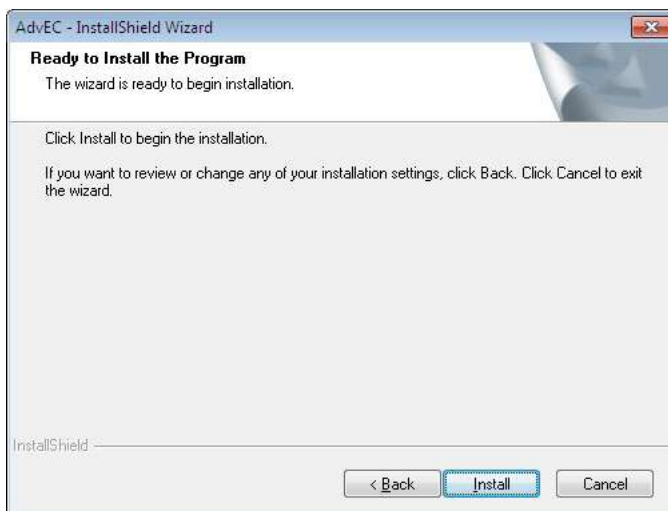
1. Launch folder <Driver Root Path>\EC\Vx.xx.xxxx
2. Install AdvEC_Vx.xx.xxxx.exe



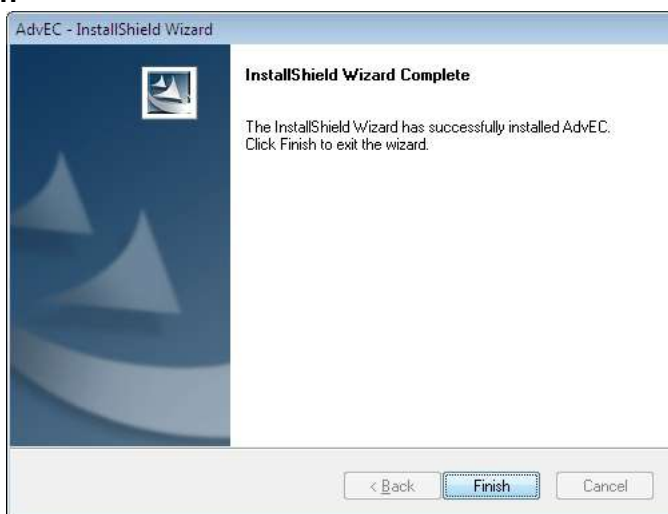
3. Click **Next**



4. Click **Install**



5. Click **Finish**



6. Choose **Yes**, then click **OK** to restart



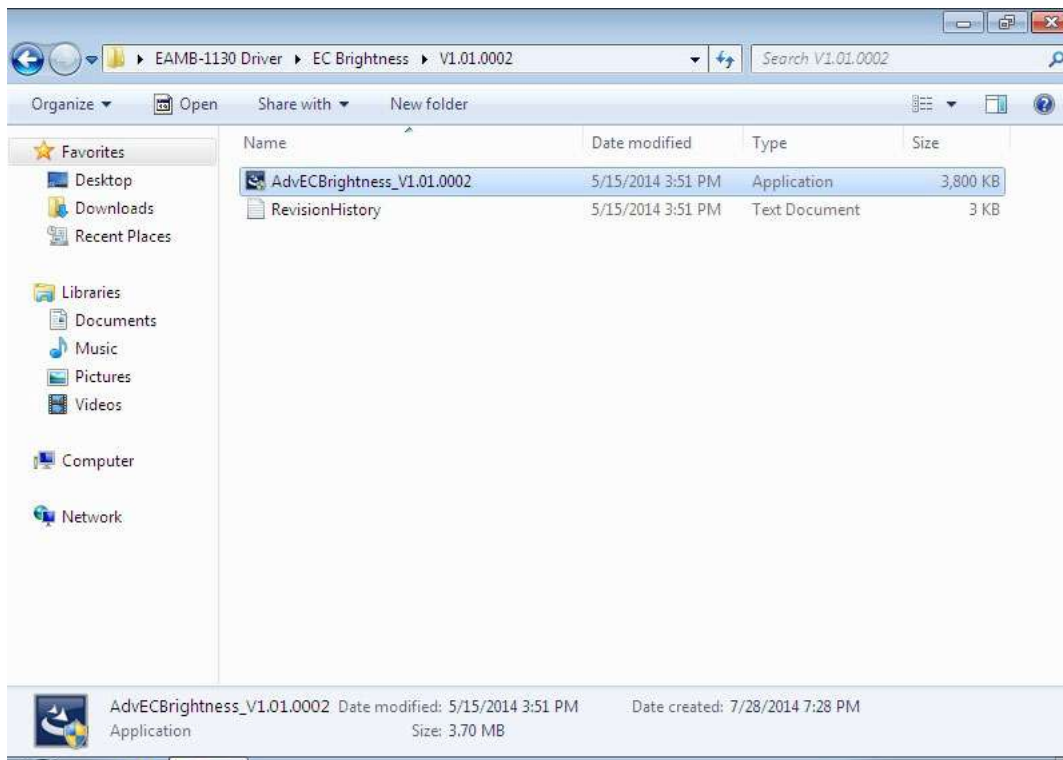
B.7 Advantech EC Brightness Control Tool Installation

Note! The Advantech EC driver must be installed first

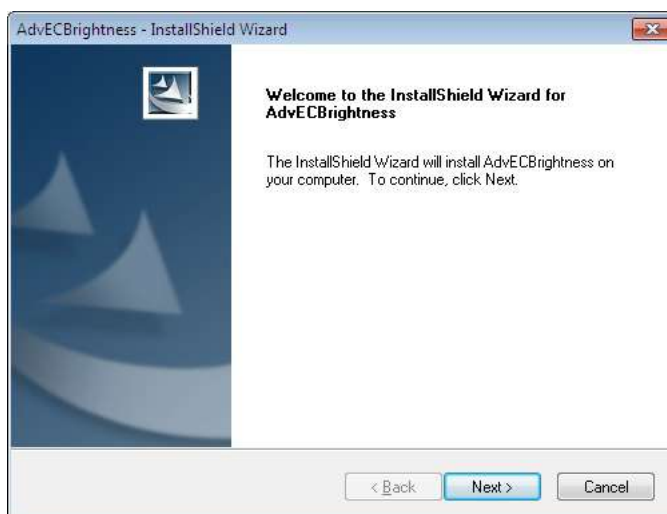


Follow the steps below to install the EC brightness control tool:

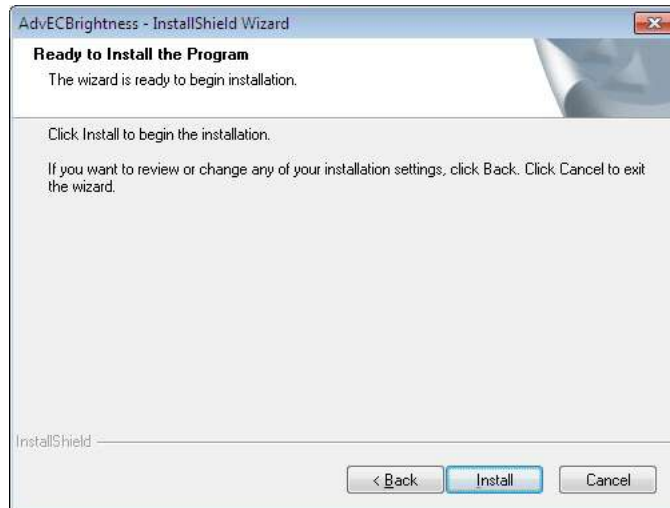
1. Launch folder <Driver Root Path>\EC Brightness\Vx.xx.xxxx
2. Install AdvECBrightness_Vx.xx.xxxx.exe



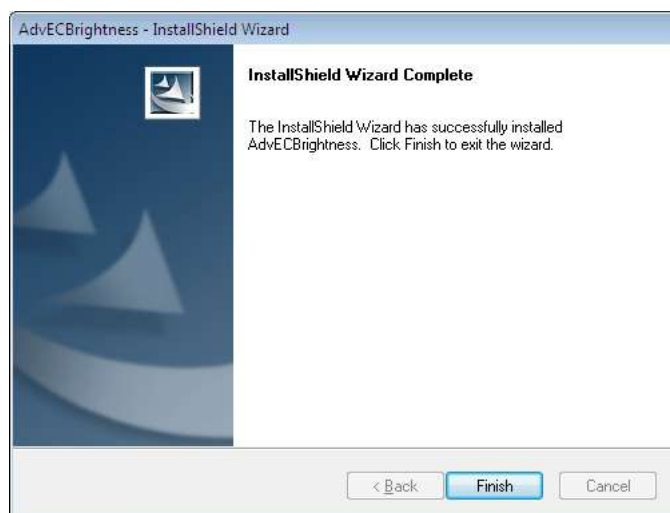
3. Click **Next**



4. Click **Install**



5. Click **Finish**



6. Choose **Yes**, then click **OK** to restart



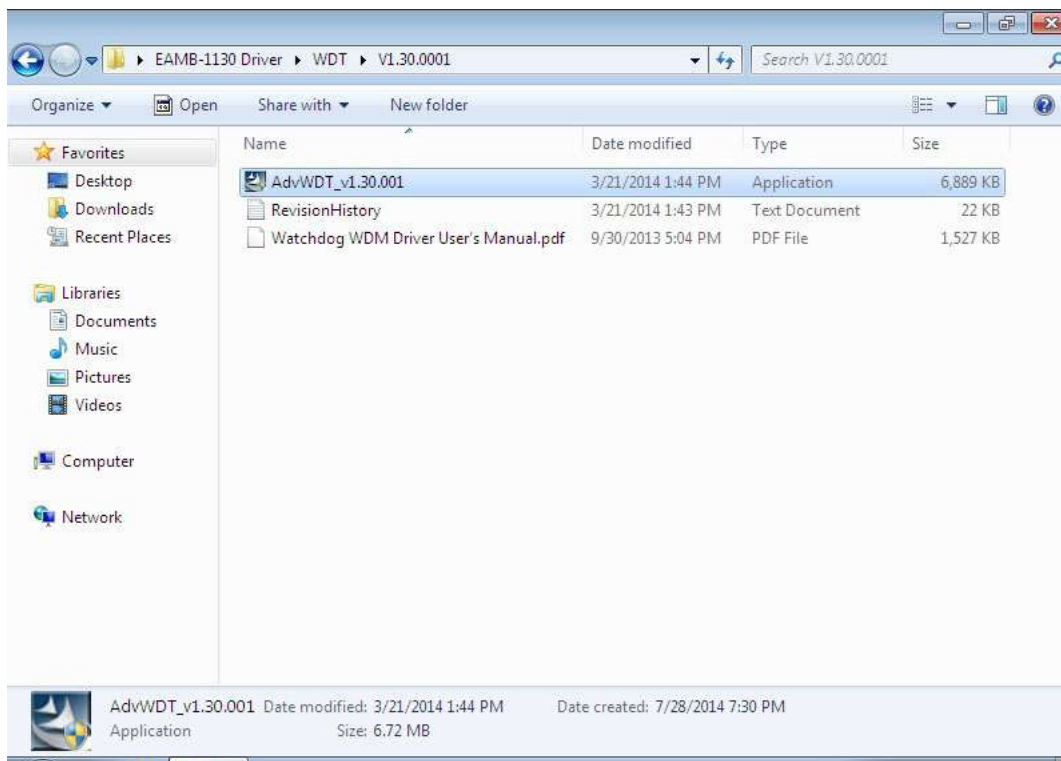
B.8 Advantech EC Watchdog Timer Driver Installation

Note! The EC driver must be installed first

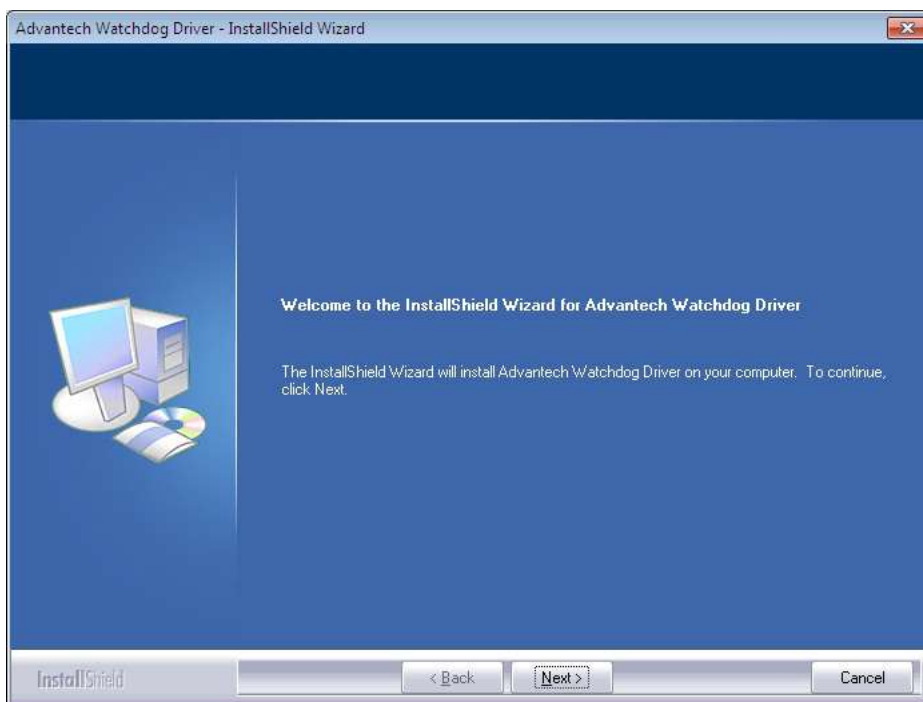


Follow the steps below to install the EC Watchdog Timer driver:

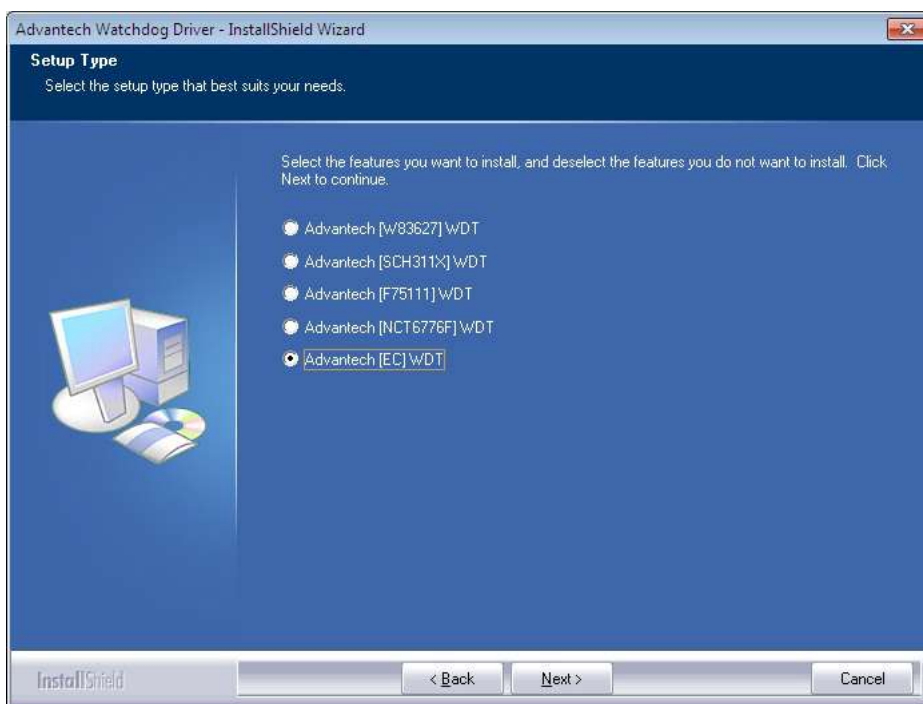
1. Launch folder <Driver Root Path>\WDT\Vx.xx.xxxx
2. Install AdvWDT_Vx.xx.xxxx.exe



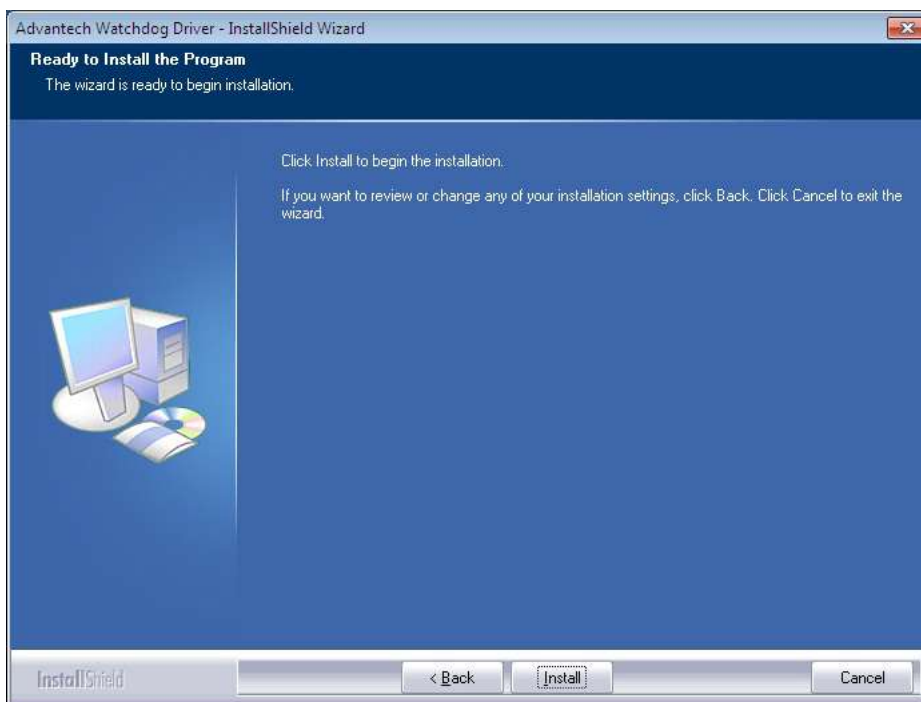
3. Click **Next**



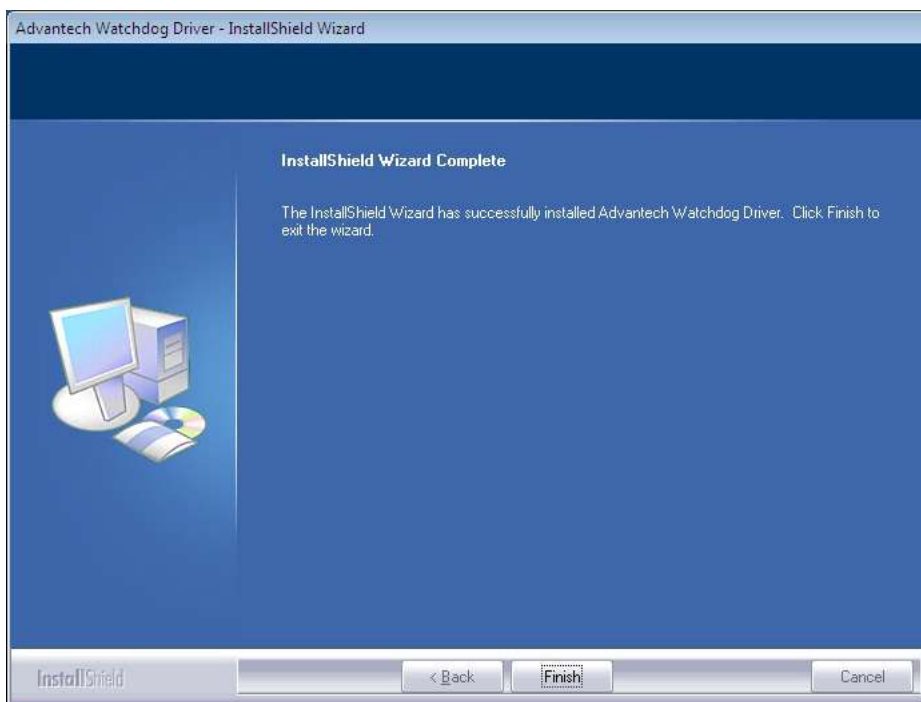
4. Choose **Advantech [EC]WDT**, then click **Next**



5. Click **Install**



6. Click **Finish**



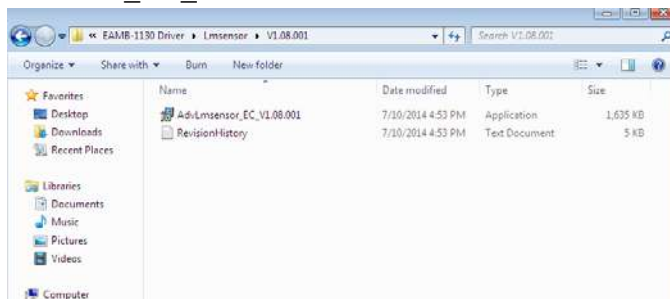
7. Choose **Yes**, then click **OK** to restart



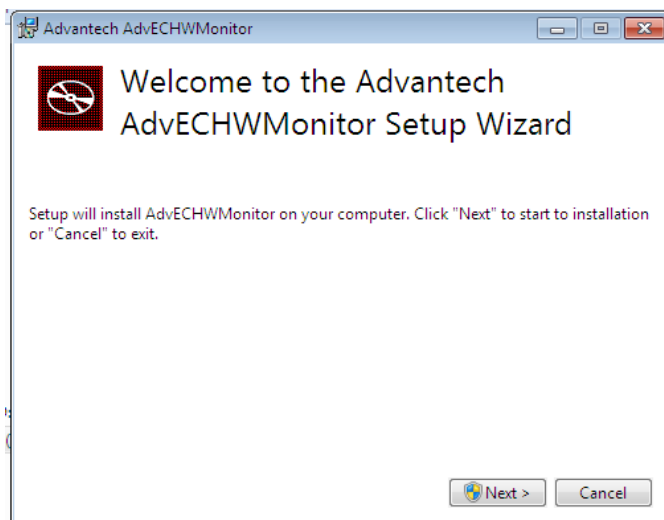
B.9 Advantech LMsensor Driver Installation

Follow the steps below to install the LMsensor driver:

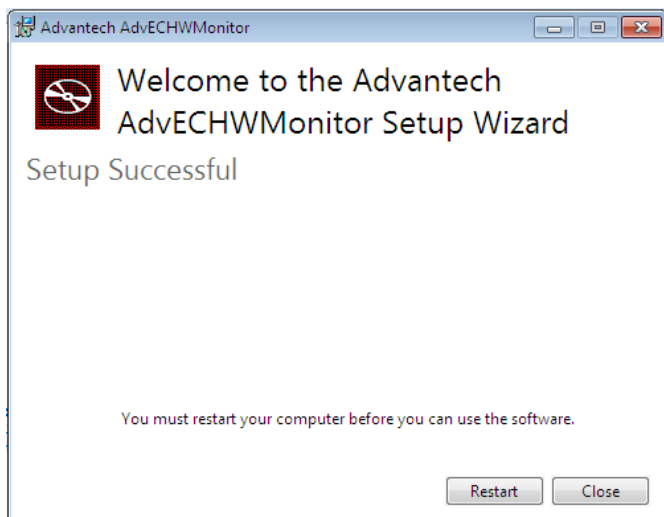
1. Launch folder <Driver Root Path>\Lmsensor\Vx.xx.xxxx
2. Install AdvLmsensor_EC_Vx.xx.xxxx.exe



3. Next



4. Restart



Note! *The drivers and utilities used for the panel PCs are subject to change without notice. If in doubt, check Advantech's website or contact our application engineers for the latest information regarding drivers and utilities.*



Appendix **C**

BIOS Setup

C.1 Introduction

AMI BIOS has been integrated into many motherboards for over a decade. With the AMI BIOS Setup program, users can modify BIOS settings and control various system features. This chapter describes the basic navigation of the BIOS Setup Utility



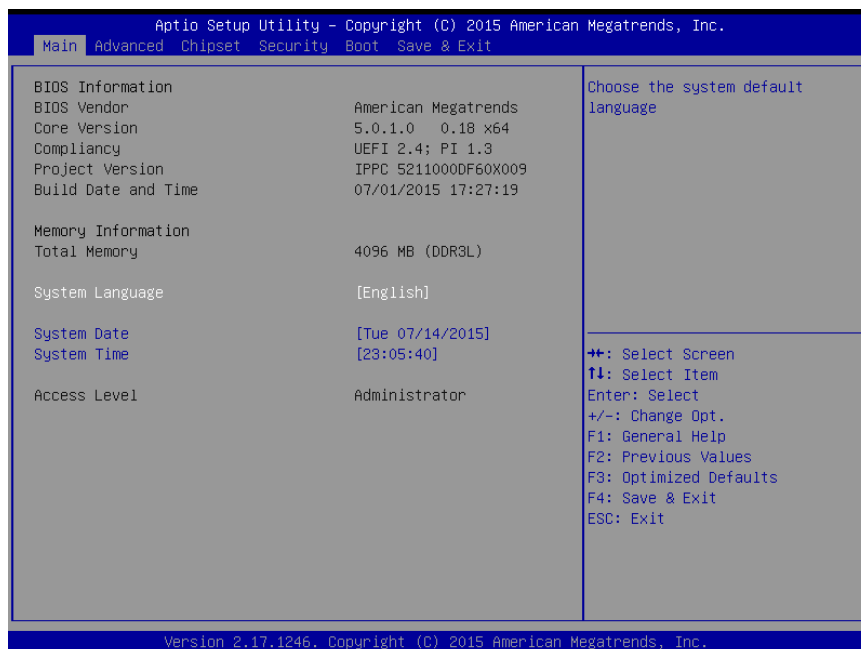
AMI's BIOS ROM has a built-in Setup program that allows users to modify the basic system configuration. This information is stored in flash ROM so it retains the Setup information when the power is turned off.

C.2 Entering Setup

Turn on the computer and check for the patch code. If there is a number assigned to the patch code, it means that the BIOS supports your CPU. If there is no number assigned to the patch code, please contact an Advantech application engineer to obtain an up-to-date patch code file. This will ensure that your CPU's system status is valid. After ensuring that you have a number assigned to the patch code, press and you will immediately be allowed to enter Setup.

C.2.1 Main Setup

When you first enter the BIOS Setup Utility, users will enter the Main setup screen. Users can always return to the Main setup screen by selecting the Main tab. There are two Main Setup options. They are described in this section. The Main BIOS Setup screen is shown below.



The Main BIOS setup screen has two main frames. The left frame displays all the options that can be configured. Grayed-out options cannot be configured; options in blue can. The right frame displays the key legend.

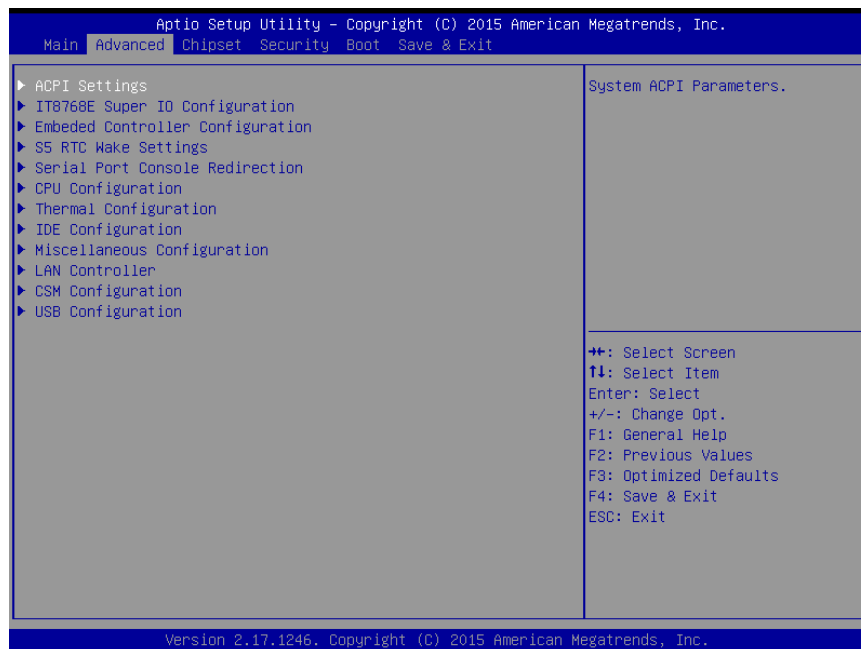
Above the key legend is an area reserved for a text message. When an option is selected in the left frame, it is highlighted in white. Often a text message will accompany it.

- **System time / System date**

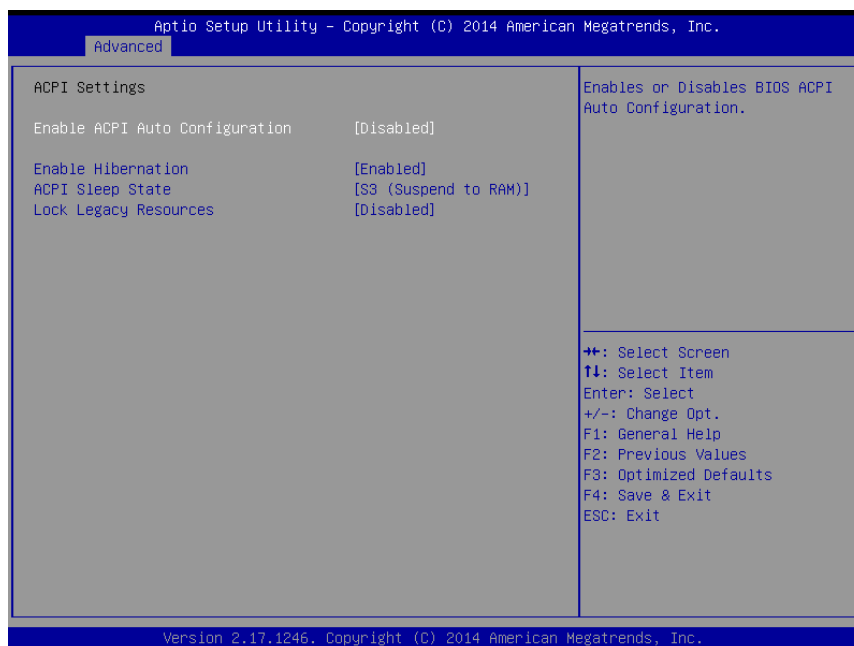
Use this option to change the system time and date. Highlight System Time or System Date using the <Arrow> keys. Enter new values through the keyboard. Press the <Tab> key or the <Arrow> keys to move between fields. The date must be entered in MM/DD/YY format. The time must be entered in HH:MM:SS format.

C.2.2 Advanced BIOS Features Setup

Select the Advanced tab from the setup screen to enter the Advanced BIOS Setup screen. Users can select any item in the left frame of the screen, such as CPU Configuration, to go to the sub menu for that item. Users can display an Advanced BIOS Setup option by highlighting it using the <Arrow> keys. All Advanced BIOS Setup options are described in this section. The Advanced BIOS Setup screens are shown below. The sub menus are described on the following pages.

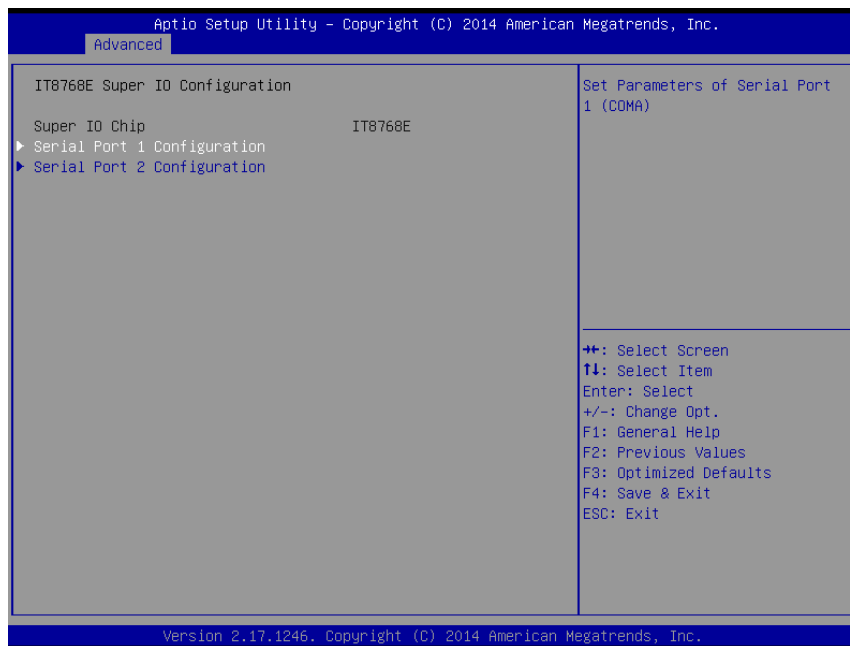


C.2.2.1 ACPI Settings Configuration



- **Enable ACPI Auto Configuration**
This item allows users to enable or disable BIOS ACPI auto configuration.
- **Enable Hibernation**
This item allows users to enable or disable System ability to hibernate (OS/S4 sleep State). This option may be not effective with some OS.
- **ACPI Sleep State**
This item allows users to select the ACPI sleep state. The system will enter when the SUSPEND button is pressed.
- **Lock Legacy Resources**
Enables or Disables Lock of Legacy Resources

C.2.2.2 Super I/O Configuration



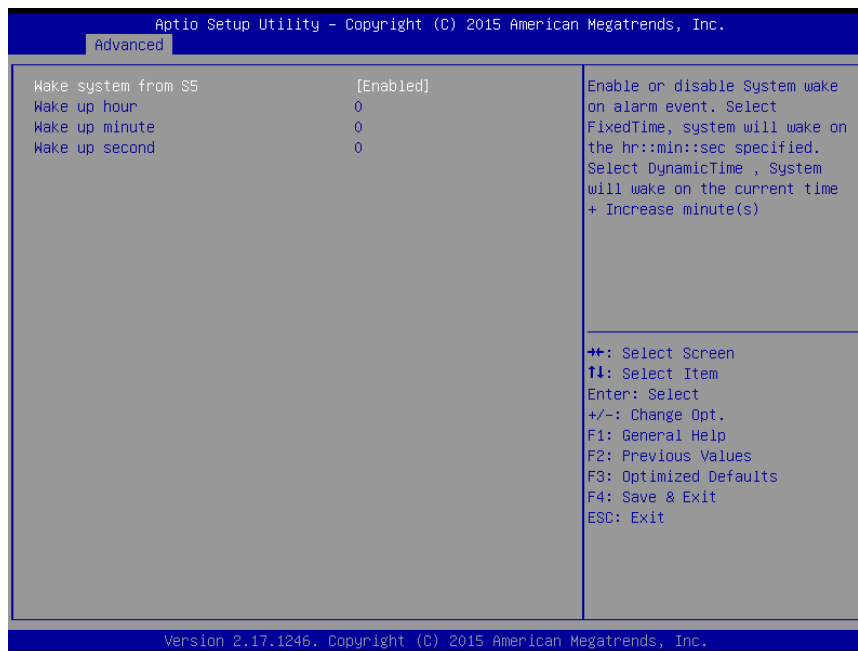
- **Serial Port 1 Configuration**
Set Parameters of Serial Port 1 (COMA)
- **Serial Port 2 Configuration**
Set Parameters of Serial Port 2 (COMB)

C.2.2.3 Embedded Controller Configuration



- **EC Hardware Monitor**
This page display all information about system Temperature/Voltage/Current.
- **iManager WatchDog IRQ**
This item allows users to set the IRQ number of EC watchdog.
- **EC Watch Dog Function**
This item allows users to select EC watchdog timer.

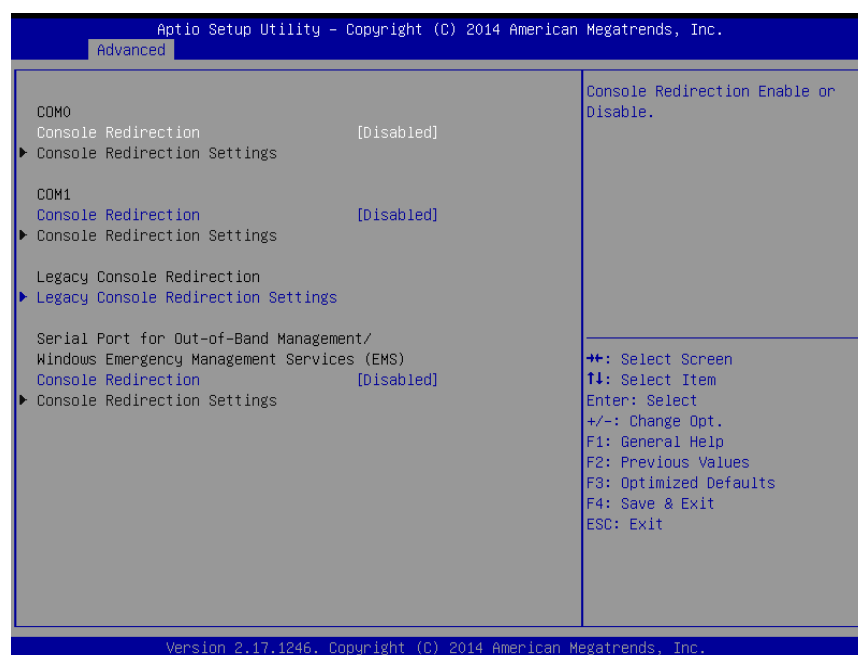
C.2.2.4 S5 RTC Wake Settings



- **Wake system with Fixed Time**

Enable or disable System wake on alarm event. Select FixedTime, system will wake on the hr::min::sec specified.

C.2.2.5 Serial Port Console Redirection



- **Console Redirection**

This item allows users to enable or disable console redirection for Microsoft Windows Emergency Management Services (EMS).

- **Console Redirection**

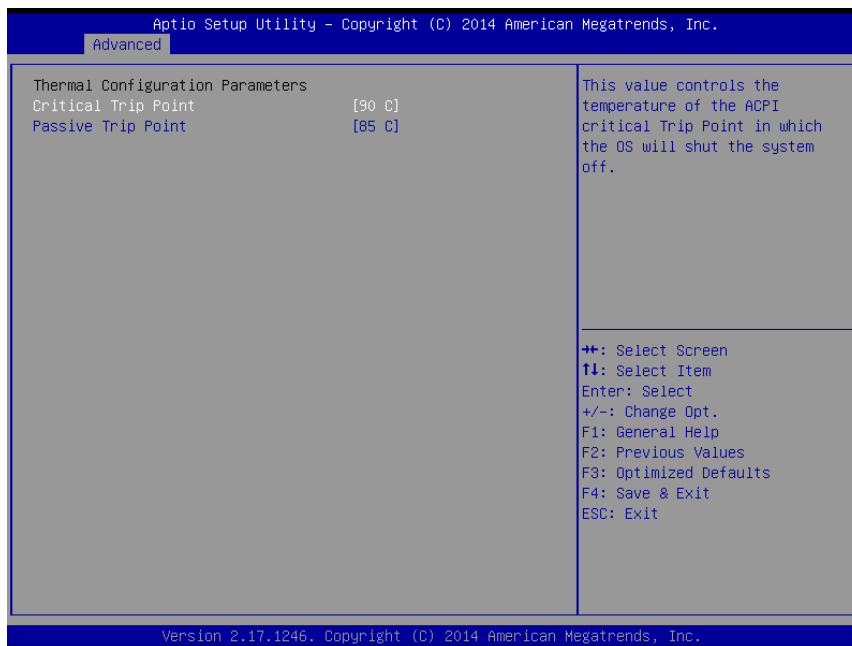
This item allows users to configuration console redirection detail settings.

C.2.2.6 CPU Configuration



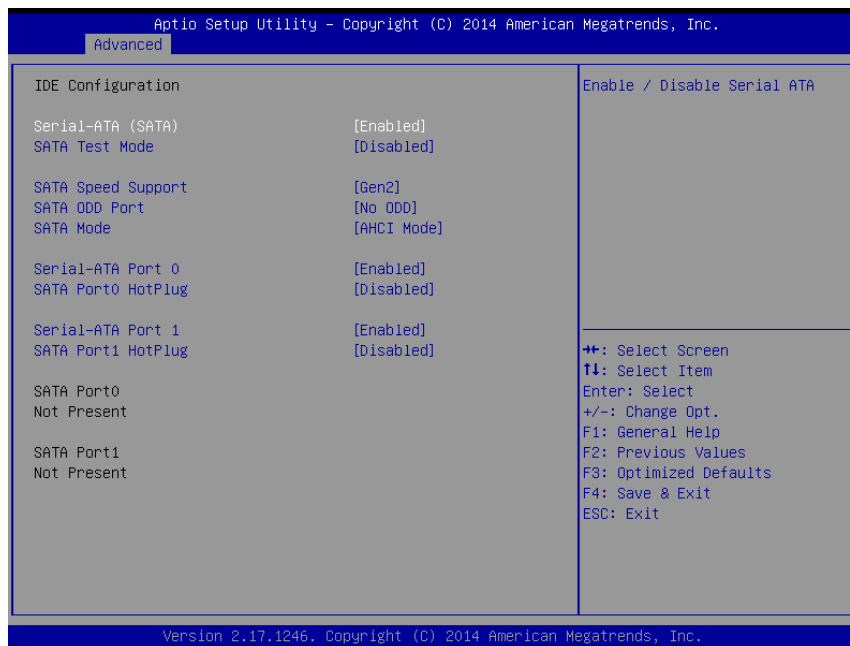
- **Execute Disable Bit**
This item allows users to enable or disable Execute Disable Bit. XD can prevent certain classes of malicious buffer overflow attacks when combined with a supporting OS.
- **Intel Virtualization Technology**
This item allows users to enable or disable Intel Virtualization Technology. When enabled, a VMM can utilize the additional hardware capabilities provided by Vanderpool Technology.

C.2.2.7 Thermal Configuration



- **Critical Trip Point**
This value controls the temperature of the ACPI critical Trip Point in which the OS will shut the system off.
- **Passive Trip Point**
This value controls the temperature of the ACPI critical Trip Point - the point in which OS will begin throttling the processor.

C.2.2.8 IDE Configuration



- **Serial-ATA (SATA)**
This item allows users to enable or disable SATA devices.
- **SATA Test Mode**
Test Mode enable / disable..
- **SATA Speed Support**
Indicates the maximum speed the SATA controller can support.
- **SATA ODD Port**
SATA ODD is Port0 or Port1.
- **SATA Mode**
This item allows users to select SATA mode selection. (Determines how SATA controller(s) operate)
- **Serial-ATA Port 0 / Port1**
Enable / Disable Serial ATA Port0 / Port1.
- **SATA Port 0 / Port1 HotPlug**
Enable / Disable SATA Port0 / Port1 hotplug function.

Note! Before installing WEC7 image, IDE configuration must set SATA Mode to IDE Mode in BIOS to boot successfully.



C.2.2.9 Miscellaneous Configuration



- **OS Selection**
OS Selection to choose Windows 8.X / Windows 7 / Windows CE 7

C.2.2.10 LAN Controller



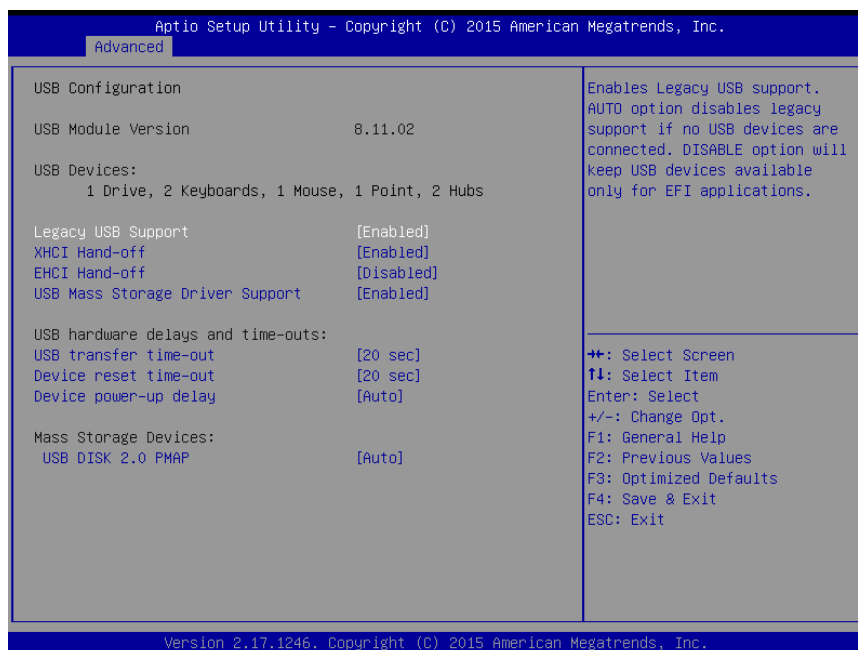
- **LAN A Controller**
Enable or disable onboard NIC.
- **LAN B Controller**
Enable or disable onboard NIC.
- **Wake on LAN Enable**
Enable/Disable integrated LAN to wake the system

C.2.2.11 CSM Configuration



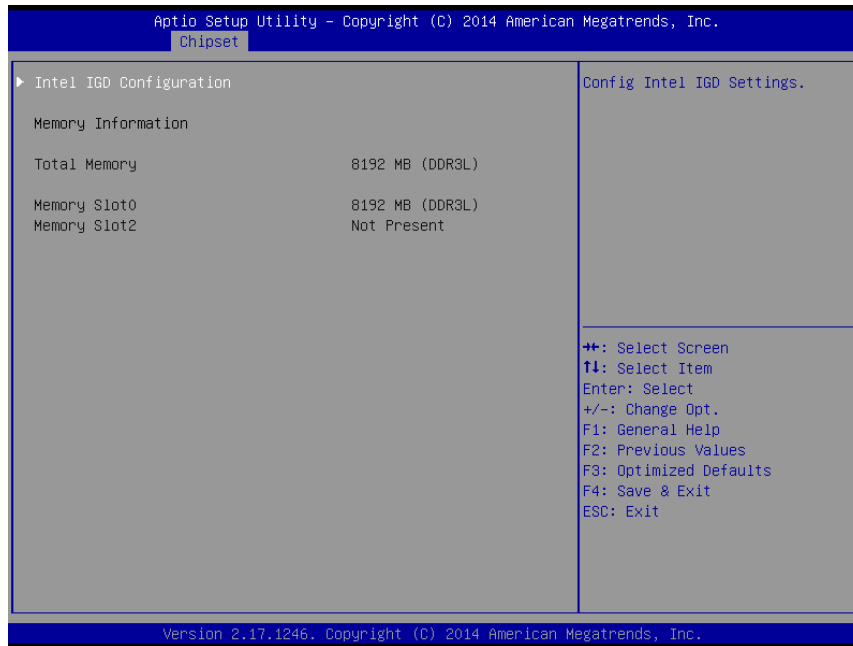
- **CSM Support**
Enable/Disable CSM Support.
- **GateA20 Active**
UPON REQUEST - GA20 can be disabled using BIOS services. ALWAYS - do not allow disabling GA20; this option is useful when any RT code is executed above 1 MB.
- **Option ROM Messages**
Set display mode for Option ROM
- **Boot option filter**
This option controls Legacy/UEFI ROMs priority
- **Network**
Controls the execution of UEFI and Legacy PXE OpROM
- **Storage**
Controls the execution of UEFI and Legacy Storage OpROM
- **Video**
Controls the execution of UEFI and Legacy Video OpROM
- **Other PCI devices**
Determines OpROM execution policy for devices other than Network, Storage, or Video

C.2.2.12 USB Configuration



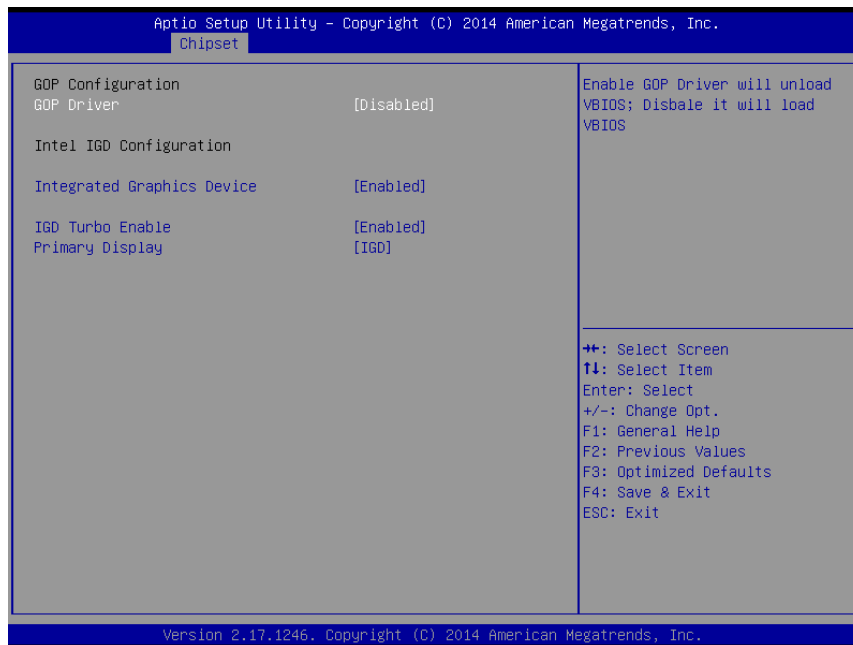
- **Legacy USB Support**
Enables support for legacy USB. Auto option disables legacy support if no USB devices are connected. DISABLE option will keep USB devices available only
- **XHCI Hand-Off**
This is a workaround for OSeS without XHCI hand-off support. The XHCI ownership change should claim by XHCI driver.
- **EHCI Hand-Off**
This is a workaround for OSeS without EHCI hand-off support. The EHCI ownership change should claim by EHCI driver.
- **USB Mass Storage Driver Support**
This item allows you to enable or disable the USB mass storage device support.
- **Device reset time-out**
USB mass storage device start unit command time-out.
- **Device power-up delay**
Maximum time the device will take before it properly report itself to the host controller.
"Auto" uses default value: for a Root port it is 100 ms, for a Hub port the delay is taken from Hub descriptor.

C.2.3 Chipset Configuration



- **Intel IGD Configuration**
Configure Intel IGD Settings

C.2.3.1 Intel IGD Configuration



- **GOP Driver**
Enable GOP Driver will unload VBIOS; Disable it will load VBIOS.

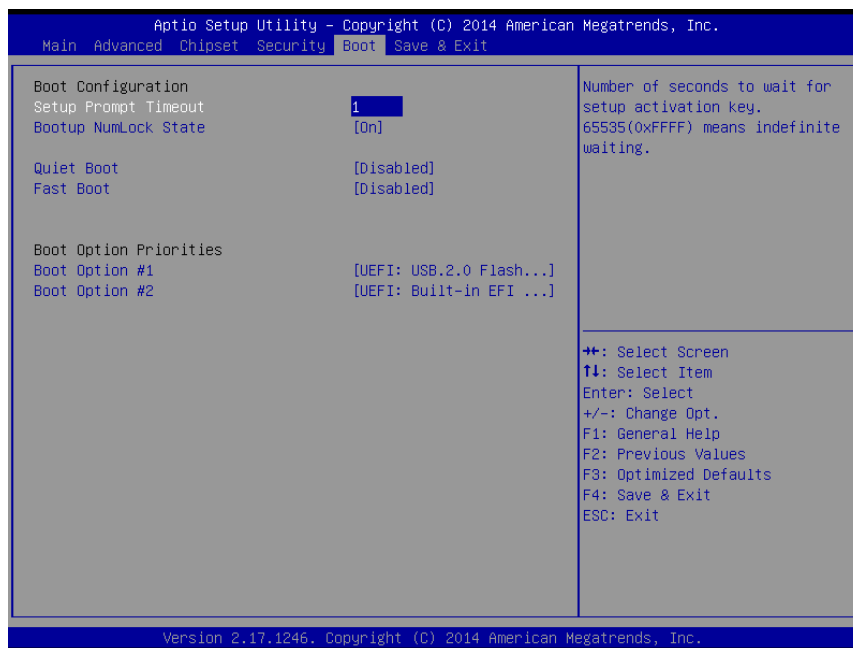
C.2.4 Security



Select Security Setup from the main BIOS setup menu. All Security Setup options, such as password protection and virus protection are described in this section. To access the sub menu for the following items, select the item and press <Enter>:

- **Administrator Password**
Set Administrator Password..
- **User Password**
Set User Password..

C.2.5 Boot



- **Setup Prompt Timeout**
Number of seconds that the firmware will wait before initiating the original default boot selection. A value of 0 indicates that the default boot selection is to be initiated immediately on boot. A value of 65535(0xFFFF) indicates that firmware will wait for user input before booting. This means the default boot selection is not automatically started by the firmware.
- **Bootup NumLock State**
Select the keyboard NumLock state
- **Quiet Boot**
Enables or disables Quiet Boot option
- **Fast Boot**
Enables or disables boot with initialization of a minimal set of devices required to launch active boot option. Has no effect for BBS boot options.
- **Boot Option #1**
Sets the system boot order
- **Boot Option #2**
Sets the system boot order

C.2.6 Save & Exit



- **Save Changes and Exit**
This item allows you to exit system setup after saving the changes.
- **Discard Changes and Exit**
This item allows you to exit system setup without saving any changes.
- **Save Changes and Reset**
This item allows you to reset the system after saving the changes.
- **Discard Changes and Reset**
This item allows you to rest system setup without saving any changes.
- **Save Changes**
This item allows you to save changes done so far to any of the options.
- **Discard Changes**
This item allows you to discard changes done so far to any of the options.
- **Restore Defaults**
This item allows you to restore/load default values for all the options.
- **Save as User Defaults**
This item allows you to save the changes done so far as user defaults.
- **Restore User Defaults**
This item allows you to restore the user defaults to all the options.
- **Boot Override**
Boot device select can override your boot priority.
- **Launch EFI Shell from files system device**
Attempts to Launch EFI Shell application (Shell.efi) from one of the available file system devices.

ADVANTECH

Enabling an Intelligent Planet

www.advantech.com

Please verify specifications before quoting. This guide is intended for reference purposes only.

All product specifications are subject to change without notice.

No part of this publication may be reproduced in any form or by any means, electronic, photocopying, recording or otherwise, without prior written permission of the publisher.

All brand and product names are trademarks or registered trademarks of their respective companies.

© Advantech Co., Ltd. 2015