

UTC-542

42.5" Ubiquitous Touch Computer UTC-542F with 6th Gen Intel Core i7/i5/i3 Processor



DeviceOn/iService

Features

- Low Power, High Performance and fanless system design
- Built-in Intel® Core™ i5-6300U
- 42.5" monitor with 16:9 widescreen display
- IP65-rated front panel for water and dust resistance
- Supports both landscape and portrait screen orientations
- Dual hot-swappable HDD/SSD slots with RAID 0/1 support
- Optional mirror coating to support smart mirror applications
- Support DeviceOn/iService software for remote device management
- i7 sku is available for F platform only



Introduction

UTC-542 features an extra slim border all-in-one computing system equipped with wide format, touch based and mirror coating LCD panel. It is easy to integrate key peripherals for diversified self-service and interactive signage deploy in different application areas. The systems deliver updated information with well-designed interactive interfaces, fully ensure relevant content and targeted promotions are delivered. UTC series touch panel computers are the best investments to enhance user satisfaction, further brand equity, and maximize business profits. Moreover, Advantech DeviceOn/iService Software is a next-generation unified device management solution based on the WISE-DeviceOn platform. With support for batch operations and multi-device control, DeviceOn/iService enables easy device configuration and deployment for convenient remote device management.

Specifications

Model	UTC-542F	
Processor System	CPU	Intel® Core™ i5-6300U (Default) Intel® Core™ i3-6100U Intel® Core™ i7-6600U
	Base Frequency	2.4 GHz (Dual-Core)
	Cache	3 MB
	Memory	2 x 204 pin SO-DIMM DDR3L 1600Mhz up to 16G
	HDD/SSD	Dual hot-swappable HDD/SSD slots with RAID 0,1 support
	Network (LAN)	2 x Gigabit Ethernet ports
	I/O Ports	2 x RS-232 COM (RS-422/485)* 3 x USB 2.0 / 2 x USB 3.0
		2 x Gigabit Ethernet (RJ-45) 1 x VGA 1 x HDMI
	Stereo Speaker	10 W x 2
	Bus expansion	Full-size MiniPCIe/mSATA
	Dimensions (W x H x D)	990.6 x 578.8 x 60.2mm (Mirror Glass) 1016.9 x 605.2 x 60.5mm (Pcap / Mirror Pcap*)
Weight	24.6 kg	
OS Support	Win 10 IoT Enterprise Linux Ubuntu 20.04	
Environmental Specifications	Operating Temperature	0 ~ 40° C (32 ~ 104° F)
	Relative Humidity	10 ~ 95% @ 40° C non-condensing
	Vibration	0.5G
	Shock	5 G peak acceleration (11 msec. duration)
	EMC/Safety	CE (No RED certification), FCC, UL, CB, CCC, BSMI
Front Panel Protection	IP65/ NEMA4 Compliant	
Power	Input Rating	100-240V _{AC} ~ 50/60Hz 3.7A
	Power Consumption	Max 100W

* Mirror PCap by project request.

** Only UTC-542D and UTC-542G models support Android OS.

Specifications (Cont.)

LCD Display	Size/Type	42.5" TFT LCD with LED backlight
	Max.Resolution	1920 x 1080
	Max Color	16.7M
	Pixel Pitch (mm)	0.49 (H) x 0.49 (W)
	Brightness (cd/m ²)	450 nits
	View Angle	Horizontal: ±89° or 178° total / Vertical: ±89° or 178° total
Touch Screen Option (PE/GE)	Type	Projected Capacitive Touch Panel / Mirror Glass Panel (No touch function) / Mirror Projected Capacitive Touch Panel*
	Light Transmission	>90% (Pure Glass); >25% (Mirror Coating)
	Controller	USB Interface
DeviceOn/Service Remote Device Management	Operating System	Windows 10
	Common Controls (Reboot, Shutdown)	✓
	Remote desktop	✓ (VNC)
	Audio Controls	✓*
	Connection Status	✓
	Hardware Status	✓*
	Hard Disk Status	✓*
	Batch Operation Support	✓
	OTA Storage Management	FTP
	OTA Software Updates	✓
Software Watchlist	✓	
	Software Start/Stop	✓*

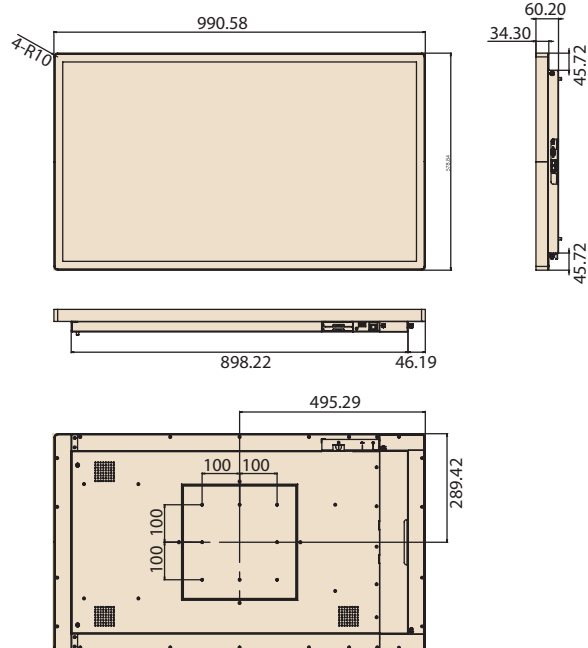
*Dependant on device model

Note: DeviceOn/Service software must be downloaded from the Advantech website at <https://www.advantech.com/search?q=DeviceOn%2FiService&st=support&ssl=Utility>

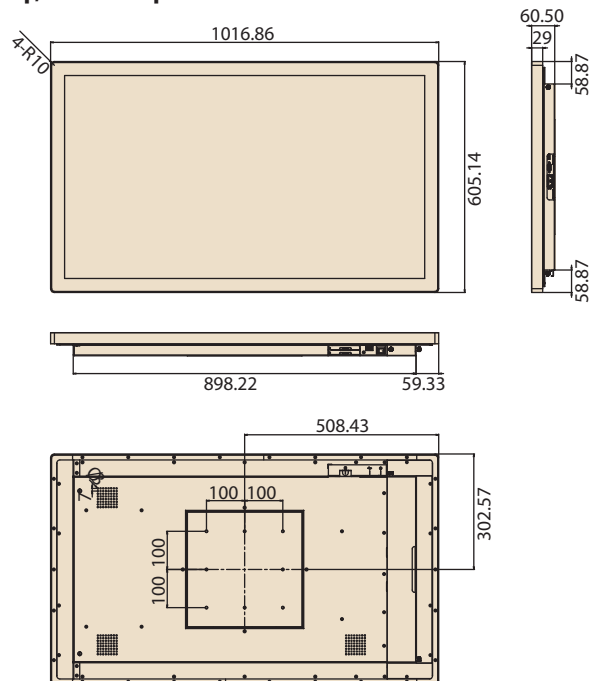
Dimensions

Unit: mm

Mirror



Pcap/ Mirror Pcap



Ordering Information

Part No.	Description
UTC-542FP-ATB0E	42.5", PCT.T/S with Intel Core i5-6300U, 4GB RAM
1702002605	Power Cord 2P FRANCE 10A/16A 220V 1.83M 90D
1702002600	Power Cord 3P UL/CSA(USA) 125V 10A 1.83M 180D
1700000596	Power Cord (China) CCC, 10A 250V, 3P 1830mm
1700018704	Power Cord UK BSI 2P 10A 250V 180cm 18AWG

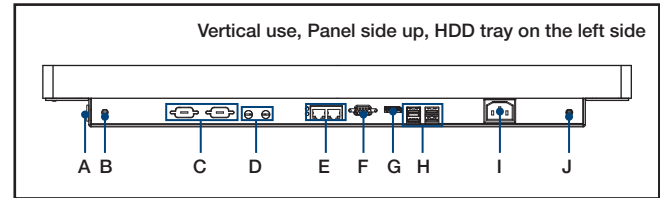
Installation Accessory

Part No.	Description
ARES-12290-L202000	allMount, 10x10/20x10/20x20 cm, max 60kg

UTC-542 WiFi Ordering Information

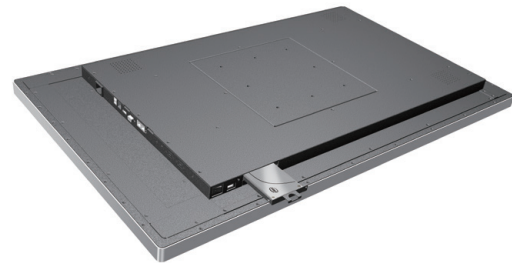
Part No.	Description
UTC-WIFI-A4E	WIFI KIT for UTC-542G (EWM-W163, M.2, 2T2R, BT4.1, Antenna)

Fully- Integrated I/O



- A. Power Switch
- B. Antenna Port
- C. COM x 2
- D. Mic-in/ Line-out
- E. LAN x 2
- F. VGA
- G. HDMI
- H. USB 3.0 x 1, USB 2.0 x 3 (Baytrail)
USB 3.0 x 2, USB 2.0 x 2 (Skylake)
- I. AC Power
- J. Antenna Port

Easy Swappable HDD/SDD Slot



DeviceOn/iService

Unified Remote Device Management Software



Features

- Supports Advantech devices equipped with Windows, Android, and Linux OS
- Flexible device, location, user, and permissions management
- Enables remote monitoring and control of hardware, software, and peripherals
- Supports over-the-air (OTA) firmware and software updates
- Ensures quick, easy, and secure device onboarding
- RESTful APIs for third-party system integration

Introduction

Advantech's DeviceOn/iService is a next-generation unified device management solution based on the WISE-DeviceOn platform. Designed to enable centralized monitoring and remote management, DeviceOn/iService supports Advantech devices equipped with Windows, Linux, or Android operating systems. The software also supports the management of applications and integrated peripherals, such as a barcode scanner, card reader, camera, and printer. Users can remotely access and control connected devices, take screenshots, rollout OTA upgrades, and use remote desktop capabilities for troubleshooting from any location at any time. Moreover, DeviceOn/iService supports batch operations to facilitate the management of multiple devices simultaneously for easy and convenient device configuration and deployment.

Total Management



Devices & Hardware

- Windows, Linux, Android
- Hardware, storage, battery



Software & Peripherals

- Software monitoring & access
- Screens, USB devices, printers



Open for Expansion

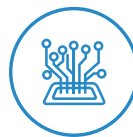
- Peripheral integration
- Open APIs for integration

Remote Access



Real-Time Monitoring

- Connection/hardware status
- Software/peripheral status
- Failure notifications



Remote Controls

- Power controls
- Audio, backlight controls
- Software controls



Troubleshooting

- Screenshots
- Remote desktop support

Operational Efficiency



OTA updates

- System/software updates
- File repository management
- App store



Batch Controls

- 1-to-many batch reboot, etc.
- Time-saving tasks



Setup Booster

- Software/peripheral watchlist
- Roles, rule templates

Note: Some functions may vary according to the product

System Architecture

