

UTC-315

15.6" Ubiquitous Touch Computer

UTC-315F with 6th Gen Intel® Core™ i5/i3 Processor

UTC-315H with 8th Gen Intel® Core™ i7/i5/i3 Processor

UTC-315I with 11th Gen Intel® Core™ i7/i5/i3 and Celeron 6305E Processor



DeviceOn/iService

Features

- Low power and fanless system design
- Built in Intel Core™ i5-6300U (UTC-315F), Intel® Core™ i5-8365UE (UTC-315H), and Intel® Core™ i5-1145G7E (UTC-315I)
- 15.6" monitor with 16:9 widescreen display
- IP65-rated front panel for water and dust resistance
- Supports both landscape and portrait screen orientations
- VESA 75 mm standard mounting holes for varied mounting demands
- Detachable frame design for panel mount applications
- Support DeviceOn/iService software for remote device management (UTC-315F only)
- Support TPM 2.0 (UTC-315F/H/I)



Introduction

UTC-315 is the multi-purpose all-in-one computing system which equipped with wide format, touch based LCD panel. It is easy to integrate key peripherals and display systems for diversified self-service and interactive signage deploy in different application areas. With the removable frame, the system also could fulfill industries or control system applications with panel mounting design. UTC series touch panel computers are the best investments to enhance user satisfaction, further brand equity, and maximize business profits.

Moreover, UTC-315 is equipped with Advantech's DeviceOn/iService software, which is a next-generation unified device management solution based on the WISE-DeviceOn platform. With support for batch operations and multi-device control, DeviceOn/iService enables easy device configuration and deployment for convenient remote device management.

Specifications

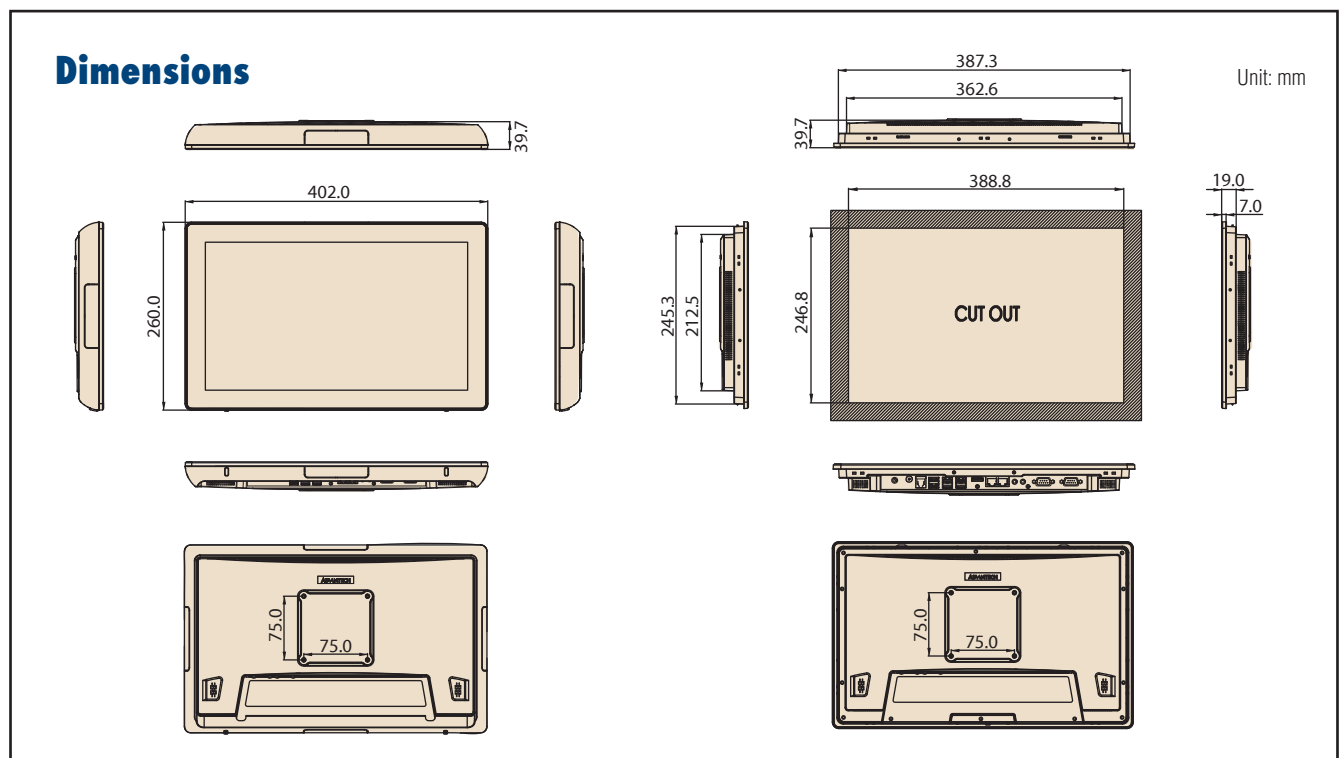
| Model | UTC-315F | UTC-315H | UTC-315I | |
|-----------------------|--------------------------------------|---|---|---|
| Processor System | CPU | Intel® Core™ i5-6300U (Default) Intel® Core™ i3-6100U | Intel Core i7-8665UE Intel Core i5-8365UE (Default) Intel Core i3-8145UE | Intel Core i7-1185G7E Intel Core i5-1145G7E (Default) Intel Core i3-1115G4E Intel Celeron 6305E |
| | Basic Frequency | i5: 2.4 GHz (Dual Core) i3: 2.3 GHz (Dual Core) | i7: 1.70 GHz (Quad-Cores) i5: 1.60 GHz (Quad-Cores) i3: 2.20 GHz (Dual-Cores) | i7: 1.80 GHz (Quad-Cores) i5: 1.50 GHz (Quad-Cores) i3: 2.20 GHz (Dual-Cores) Celeron 6305E: 1.8GHz (Dual-Core) |
| | Smart Cache | i5: 3MB i3: 3MB | i7: 8 MB i5: 6 MB i3: 4 MB | i7: 12 MB i5: 8 MB i3: 6 MB Celeron 6305E: 4MB |
| | Memory | 1 x 260pin SO-DIMM DDR4 2133 MHz up to 16 GB | 1X 260pin SO-DIMM DDR4 2400 MHZ up to 32GB | 1 x 260pin SO-DIMM DDR4 3200 MHZ up to 32GB |
| | HDD | 1 x 2.5 internal SATA HDD bay | | |
| | Network | 2 x Gigabit Ethernet ports (RJ-45) | | |
| | I/O ports | 1 x RS-232 1 x RS-232/422/485 2 x USB 2.0 / 4 x USB 3.0 2 x Gigabit Ethernet (RJ-45) 1 x HDMI 1 x RJ11 (12V output only) Audio Line-out x 1, Mic-in x 1 | 1 x RS-232 1 x RS-232/485 6 x USB 3.1 2 x Gigabit Ethernet (RJ-45) 1 x HDMI 1 x DP Audio Line-out x 1, Mic-in x 1 | 1 x RS-232 1 x RS-232/485 2 x USB 2.0 / 4 x USB 3.2 2 x Gigabit Ethernet (RJ-45) 1 x HDMI Audio Line-out x 1, Mic-in x 1 |
| | Stereo Speaker | 2Wx2 | | |
| | BUS expansion | Full-size MiniPCIe/mSATA | 1x M.2 2280/2242 M-Key for NVMe/SATA SSD 1x M.2 2230 E-Key | |
| | Mounting | VESA 75 x 75; crew Size: M4, 10mm | | |
| Dimension (W x H x D) | 402 x 260 x 39.7 mm | | | |
| Weight | 3.5 kg | | | |
| Security | TPM2.0 | Support | | |
| OS support | Win 10 IoT Enterprise 64bit Linux | Win 10 IoT Enterprise 64bit Win 11 IoT Enterprise 64bit Linux | | |

Specifications (Cont.)

| | | | |
|---|------------------------------------|--|------------------------------|
| Environmental Specifications | Operating Temperature | 0 ~ 40° C (32 ~ 104° F) | |
| | Relative Humidity | 10 ~ 95% @ 40° C non-condensing | |
| | Vibration | 0.5G | |
| | Shock | 10 G peak acceleration (11 msec. duration) | |
| | EMC/ Safety | CE, FCC, UL, CCC, CB, BSMI, BIS, UKCA | |
| | Front Panel Protection | IP65/ NEMA4 Compliant | |
| Power Supply | Input Voltage | 12-30V _{dc} | |
| | Power Consumption | Typical 32W, Max. 70W | |
| | Adapter | 12V = 7A, 84W or 12V = 8A, 96W ITE adapter (dependent on stock) | |
| LCD Display | Size | 15.6" TFT LCD | 15.6" TFT LCD |
| | Max Resolution | 1366 x 768 (FHD 1920 x 1080 Optional) | 1920 x 1080 |
| | Max Color | 262K | 262K |
| | Pixel Pitch (um) | 252(H) x 252(V) | 252(H) x 252(V) |
| | Brightness (cd/m ²) | 220 (Typical) | 220 (Typical) |
| | View Angle | 90° /60° (170°/ 170° Optional) | 90°/60° (170°/170° optional) |
| Touch Screen | Type | Analog Resistive 5-wires (Res. Flat Glass) / Projected Capacitive Touch Panel (Pcap. Flat Glass) / Glass Panel | |
| | Light Transmission | Res. Touch : 80% ± 5% / P-Cap Touch : 90% ± 2% | |
| | Controller | COM interface / USB interface | |
| DeviceOn/iService Remote Device Management | Operating System | Windows 10 | |
| | Common Controls (Reboot, Shutdown) | ✓ | |
| | Remote desktop | ✓ (VNC) | |
| | Audio Controls | ✓* | |
| | Connection Status | ✓ | |
| | Hardware Status | ✓* | |
| | Hard Disk Status | ✓* | |
| | Batch Operation Support | ✓ | |
| | OTA Storage Management | FTP | |
| | OTA Software Updates | ✓ | |
| | Software Watchlist | ✓ | |
| | Software Start/Stop | ✓* | |
| | Peripherals Watchlist | ✓* | |

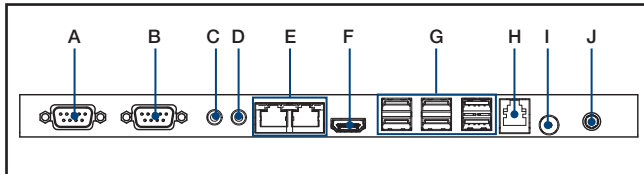
*Dependant on device model

Note: DeviceOn/iService software must be downloaded from the Advantech website at <https://www.advantech.com/search/?q=DeviceOn%2FiService&st=support&sst=Utility>



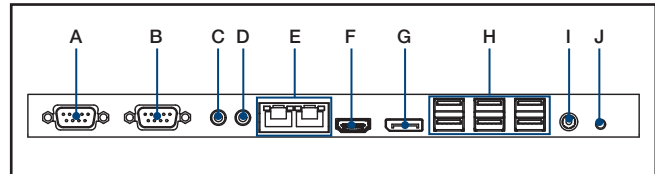
Fully- Integrated I/O

UTC-315F



- A. COM1
- B. COM2
- C. Mic in
- D. Line-Out
- E. LAN ports x 2
- F. HDMI
- G. USB 2.0 x 2 / USB 3.0 x 4
- H. RJ11 (12V output only)
- I. Power button
- J. DC input 12-30V

UTC-315H/I



- A. COM1
- B. COM2
- C. Mic in
- D. Line-out
- E. LAN ports x 2
- F. HDMI
- G. DP (UTC-315H)
- H. USB 3.1 x 6 (UTC-315H)
USB 2.0 x 2 / USB 3.2 x 4 (UTC-315I)
- I. DC input 12-30V
- J. Power button

Ordering Information

| Part No. | Description |
|-----------------|--|
| UTC-315FR-ATW0E | 15.6" White, Intel® Core™ i5-6300U, Res T/S 4GB RAM, IT Adapter |
| UTC-315FR-ATB0E | 15.6" Black, Intel® Core™ i5-6300U, Res T/S 4GB RAM, IT Adapter |
| UTC-315FP-ATW0E | 15.6" White, Intel® Core™ i5-6300U, PCap T/S 4GB RAM, IT Adapter |
| UTC-315FP-ATB0E | 15.6" Black, Intel® Core™ i5-6300U, PCap T/S 4GB RAM, IT Adapter |
| UTC-315HR-ATW0E | 15.6" White, Intel® Core™ i5-8365UE, Res T/S 8GB RAM, IT Adapter |
| UTC-315HR-ATB0E | 15.6" Black, Intel® Core™ i5-8365UE, Res T/S 8GB RAM, IT Adapter |
| UTC-315HP-ATW0E | 15.6" White, Intel® Core™ i5-8365UE, PCap T/S 8GB RAM, IT Adapter |
| UTC-315HP-ATB0E | 15.6" Black, Intel® Core™ i5-8365UE, PCap T/S 8GB RAM, IT Adapter |
| UTC-315IR-ATW0E | 15.6" White, Intel® Core™ i5-1145G7E, Res T/S 8GB RAM, IT Adapter |
| UTC-315IR-ATB0E | 15.6" Black, Intel® Core™ i5-1145G7E, Res T/S 8GB RAM, IT Adapter |
| UTC-315IP-ATW0E | 15.6" White, Intel® Core™ i5-1145G7E, PCap T/S 8GB RAM, IT Adapter |
| UTC-315IP-ATB0E | 15.6" Black, Intel® Core™ i5-1145G7E, PCap T/S 8GB RAM, IT Adapter |
| UTC-315IP-ATB1E | 15.6" Black, Intel® Core™ i3-1115G4E, PCap T/S 8GB RAM, IT Adapter |

*White Touch Bezel could be customized by customer request with MOQ

UTC-315 WiFi Ordering Information

| Part No. | Description |
|---------------|--|
| UTC-300P-W11E | WiFi Kit for UTC-315F (MiniPCIe, WiFi and Bluetooth) |
| UTC-300P-W12E | WiFi Kit for UTC-315H/I (M.2 2230, WiFi and Bluetooth) |
| UTC-300P-W13E | WiFi Kit for UTC-315F |
| UTC-300P-W14E | WiFi Kit for UTC-315H/I |

Installation Accessory

| Part No. | Description |
|--------------------|---|
| UTC-300P-D10E | Desk Stand, Single Color-Silver (UTC-315 series) |
| UTC-T01-STANDE | Triangle shape floor stand (UTC-315/UTC-318/UTC-320 series) |
| UTC-H01-STANDE | H-shaped floor stand (UTC-315/UTC-318/UTC-320 series) |
| UTC-PANEL-MOUNT6E | Panel mount Kit (UTC-315 series) |
| ARES-12240-AR01100 | Wall Mount Kit, support 2~10kg, VESA 75/100mm (Tilttable) |
| ARES-12250-L101000 | Wall Mount Kit, Max. support 25kg, VESA 75/100mm (Fixed) |

Peripherals for UTC-300 series

| Part No. | Description |
|---------------|--|
| UTC-300P-C20E | 5M Camera Module, White, for UTC-300 series |
| UTC-300P-C21E | 5M Camera Module, Black, for UTC-300 series |
| UTC-300P-M20E | Magnet Strip Reader, White, for UTC-300 series |
| UTC-300P-M21E | Magnet Strip Reader, Black, for UTC-300 series |
| UTC-300P-R20E | RFID Reader, White, for UTC-300 series |
| UTC-300P-R21E | RFID Reader, Black, for UTC-300 series |
| UTC-300P-S20E | Smart Card Reader, White, for UTC-300 series |
| UTC-300P-S21E | Smart Card Reader, Black, for UTC-300 series |
| UTC-300P-B60E | 2D Barcode Reader, White for UTC-300 series |
| UTC-300P-B61E | 2D Barcode Reader, Black for UTC-300 series |

Power Cord Ordering Information

| Part NO. | Description |
|---------------|---|
| 1702002605 | Power cord 2P FRANCE 10A/16A 220V 1.83M 90D |
| 1702002600 | Power Cord 3P UL/CSA(USA) 125V 10A 1.83M 180D |
| 1700000596-11 | Power Cord (China) CCC, 10A 250V, 3P 1830mm |
| 1700018704 | Power Cord UK BSI 2P 10A 250V 180cm 18AWG |
| 1700000237 | Power Cord PSE 3P 12A 125V 183cm |
| 1700001714 | Power Cord BSMI 3P 7A 125V 183cm |

DeviceOn/iService

Unified Remote Device Management Software



Features

- Supports Advantech devices equipped with Windows, Android, and Linux OS
- Flexible device, location, user, and permissions management
- Enables remote monitoring and control of hardware, software, and peripherals
- Supports over-the-air (OTA) firmware and software updates
- Ensures quick, easy, and secure device onboarding
- RESTful APIs for third-party system integration

Introduction

Advantech's DeviceOn/iService is a next-generation unified device management solution based on the WISE-DeviceOn platform. Designed to enable centralized monitoring and remote management, DeviceOn/iService supports Advantech devices equipped with Windows, Linux, or Android operating systems. The software also supports the management of applications and integrated peripherals, such as a barcode scanner, card reader, camera, and printer. Users can remotely access and control connected devices, take screenshots, rollout OTA upgrades, and use remote desktop capabilities for troubleshooting from any location at any time. Moreover, DeviceOn/iService supports batch operations to facilitate the management of multiple devices simultaneously for easy and convenient device configuration and deployment.

Total Management



Devices & Hardware

- Windows, Linux, Android
- Hardware, storage, battery



Software & Peripherals

- Software monitoring & access
- Screens, USB devices, printers



Open for Expansion

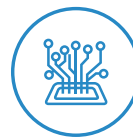
- Peripheral integration
- Open APIs for integration

Remote Access



Real-Time Monitoring

- Connection/hardware status
- Software/peripheral status
- Failure notifications



Remote Controls

- Power controls
- Audio, backlight controls
- Software controls



Troubleshooting

- Screenshots
- Remote desktop support

Operational Efficiency



OTA updates

- System/software updates
- File repository management
- App store



Batch Controls

- 1-to-many batch reboot, etc.
- Time-saving tasks



Setup Booster

- Software/peripheral watchlist
- Roles, rule templates

Note: Some functions may vary according to the product

System Architecture

