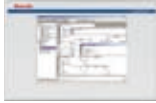





Rexroth
Bosch Group

GoTo Program products are highlighted below.

IndraControl VEP (series 3 and 4) – Technical data

Technical data	VEP 30.3/VEP 30.4	VEP 40.3/VEP 40.4	VEP 50.3/VEP 50.4	VEP 30.4 DP
				
Display	8.4" – TFT	12.1" – TFT	15" – TFT	8.4" – TFT
Resolution	800 x 600, SVGA	800 x 600, SVGA	1,024 x 768, XGA	800 x 600, SVGA
Touch screen	●			
Keyboard	Through virtual keyboard			
Processor	● Celeron 600 MHz/Celeron 1 GHz (▼)			3 switch elements
RAM	256 MB/512 MB/1 GB			
Compact flash	2 CF sockets/1 x 128 MB CF card fitted			
Module slots	1			
Supply voltage	24 V DC			
Interfaces	RS 232, 2 x USB, 1x Ethernet TCP/IP/2 x Ethernet TCP/IP (○)			
Fieldbus	Fieldbus module (PROFIBUS DP master) occupies 1 slot			
UPS	Short-time UPS for data backup (512 kB) to compact flash (○)			
Operating system	Windows CE 4.2 (VEP xx.3)/Windows CE 6.0 (VEP xx.4, ▼)			
Approvals	CE/UL/CSA			
Front protection degree	IP65			Overall IP54
Temperature	5 to 45 °C			
Dimensions (W x H x D)	296 x 200 x 75/88 mm	350 x 290 x 73/86 mm	407 x 370 x 75/88 mm	▼
Availability				
Automation system	IndraMotion MLC, IndraMotion MLP, IndraMotion MTX, IndraLogic (technical details available on request)			

- Default
- Optional
- ▼ In preparation

GoTo Program products are highlighted below.

IndraControl VEP (series 3 and 4) – Ordering data

Ordering data for hardware	
Description	Type code
IndraControl VEP 30, visualization	VEP 30.3CCN-256NN-MAD-128-NN-FW
IndraControl VEP 30, PROFIBUS DP, control component	VEP 30.3CCU-256NA-MAD-128-NN-FW
IndraControl VEP 40, visualization	VEP 40.3CEN-256NN-MAD-128-NN-FW
IndraControl VEP 40, PROFIBUS DP, control component	VEP 40.3CEU-256NA-MAD-128-NN-FW
IndraControl VEP 50, visualization	VEP 50.3CHN-256NN-MAD-128-NN-FW
IndraControl VEP 50, PROFIBUS DP, control component	VEP 50.3CHU-256NA-MAD-128-NN-FW
IndraControl VEP 30, PROFIBUS DP, control component (in preparation)	VEP 30.4EFU-256NC-MAD-1G0-NN-FW
IndraControl VEP 30, USB, visualization (in preparation)	VEP 30.4EFN-256NN-MAD-1G0-NN-FW
IndraControl VEP 30, 2 x SERCOS III, control component (in preparation)	VEP 30.4EFU-5123C-MBD-1G0-NN-FW
IndraControl VEP 30, CG, PROFIBUS DP (in preparation)	VEP 30.4DPU-256NC-MAD-1G0-NN-FW
IndraControl VEP 30 DP, visualization (in preparation)	VEP 30.4EKN-256NN-MAD-1G0-NN-FW
IndraControl VEP 40, USB, visualization (in preparation)	VEP 40.4DBN-256NN-MAD-1G0-NN-FW
IndraControl VEP 40, PROFIBUS DP, control component (in preparation)	VEP 40.4DBU-256NC-MAD-1G0-NN-FW
IndraControl VEP 40, 2 x SERCOS III, control component (in preparation)	VEP 40.4DBU-5123C-MBD-1G0-NN-FW
IndraControl VEP 40, visualization (in preparation)	VEP 40.4EIN-256NN-MAD-1G0-NN-FW
IndraControl VEP 50, USB, visualization (in preparation)	VEP 50.4DEN-256NN-MAD-1G0-NN-FW
IndraControl VEP 50, PROFIBUS DP, control component (in preparation)	VEP 50.4DEU-256NC-MAD-1G0-NN-FW
IndraControl VEP 50, 2 x SERCOS III, control component (in preparation)	VEP 50.4DEU-5123C-MBD-1G0-NN-FW

Ordering data for firmware	
Description	Type code
Firmware for IndraControl VEP xx.3, WinStudio Lite Runtime license	FWA-VEP*03-CWL-xxVRS-D0
Firmware for IndraControl VEP xx.3, WinStudio Lite Runtime license and support of Asiatic characters	FWA-VEP*03-CWL-xxVRS-E4
Firmware for IndraControl VEP xx.4 (in preparation), WinStudio Lite Runtime license	FWA-VEP*04-CWL-xxVRS-D0
Firmware for IndraControl VEP xx.4 (in preparation), WinStudio Lite Runtime license and support of Asiatic characters	FWA-VEP*04-CWL-xxVRS-E4

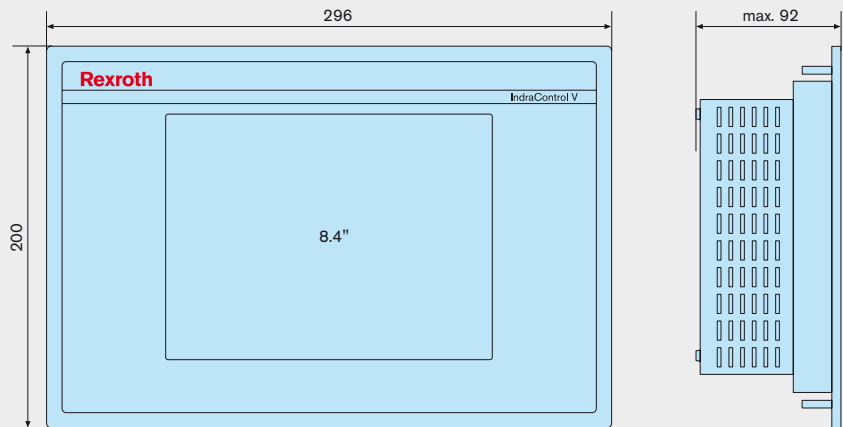
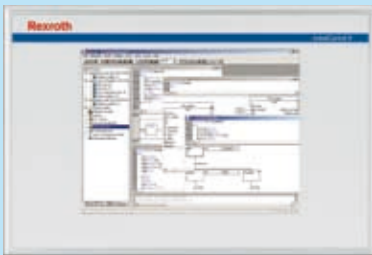
xx = software/firmware version, device version

Rexroth
Bosch Group

GoTo Program products are highlighted below.

IndraControl VEP 30 and VEP 30 CG/DP

IndraControl VEP 30



IndraControl VEP 30 CG/DP

