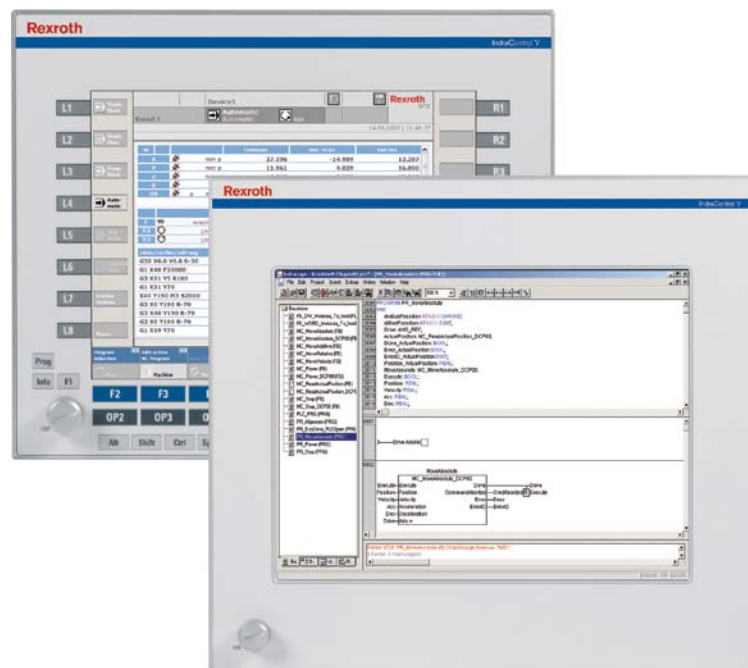


Panel-PC
15" display
IndraControl VEP 50



Panel-PC

15" display ■ IndraControl VEP 50

Documentation

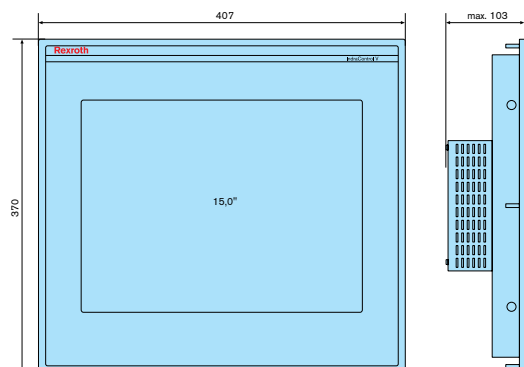
**Technical data**

	VEP 50.3 CH	VEP 50.4 DE	VEP 50.4 BI	VEP 50.5 DF
Processor				
CPU	Celeron 600 MHz	Atom 1.1 GHz	Atom 1.1 GHz	Atom 1.1 GHz
Operating system	Windows CE 4.2	Windows CE 6.0 / Windows XPe	Windows XPe	Windows XPe / Windows 7
Memory				
Application	512 MB	1 GB	1 GB	2 GB
Flash size	1 GB	1 GB / 4 GB	4 GB	4 GB / 8 GB
CompactFlash	2	2	2	2
	CF sockets	CF sockets	CF sockets	CF sockets
Display				
Type	TFT	TFT	TFT	TFT
Size	38.1 cm (15")	38.1 cm (15")	38.1 cm (15")	38.1 cm (15")
Colors/gray tones	256.000	256.000	256.000	256.000
	Colors	Colors	Colors	Colors
Resolution	1024 x 768	1024 x 768	1024 x 768	1024 x 768
Operation				
Type	Touch screen	Touch screen	Operator keys	Touch screen
	Through virtual keyboard	Through virtual keyboard	Through virtual keyboard	Through virtual keyboard
Function keys	0	0	16	16
Machine keys	0	0	16	16
Additional keys	0	0	14	14
Interfaces				
Ethernet	2 x Ethernet TCP/IP	1 x Ethernet TCP/IP	1 x Ethernet TCP/IP	2 x Ethernet TCP/IP
USB	2 x USB 2.0	3 x USB	3 x USB	3 x USB
Seriell	1 x RS232	1 x RS232	1 x RS232	1 x
Fieldbus				
PROFIBUS	1 x PROFIBUS DP-Master (Optional)			
Electrical data				
Supply voltage	U	24 V DC	24 V DC	24 V DC

Panel-PC

15" display ■ IndraControl VEP 50

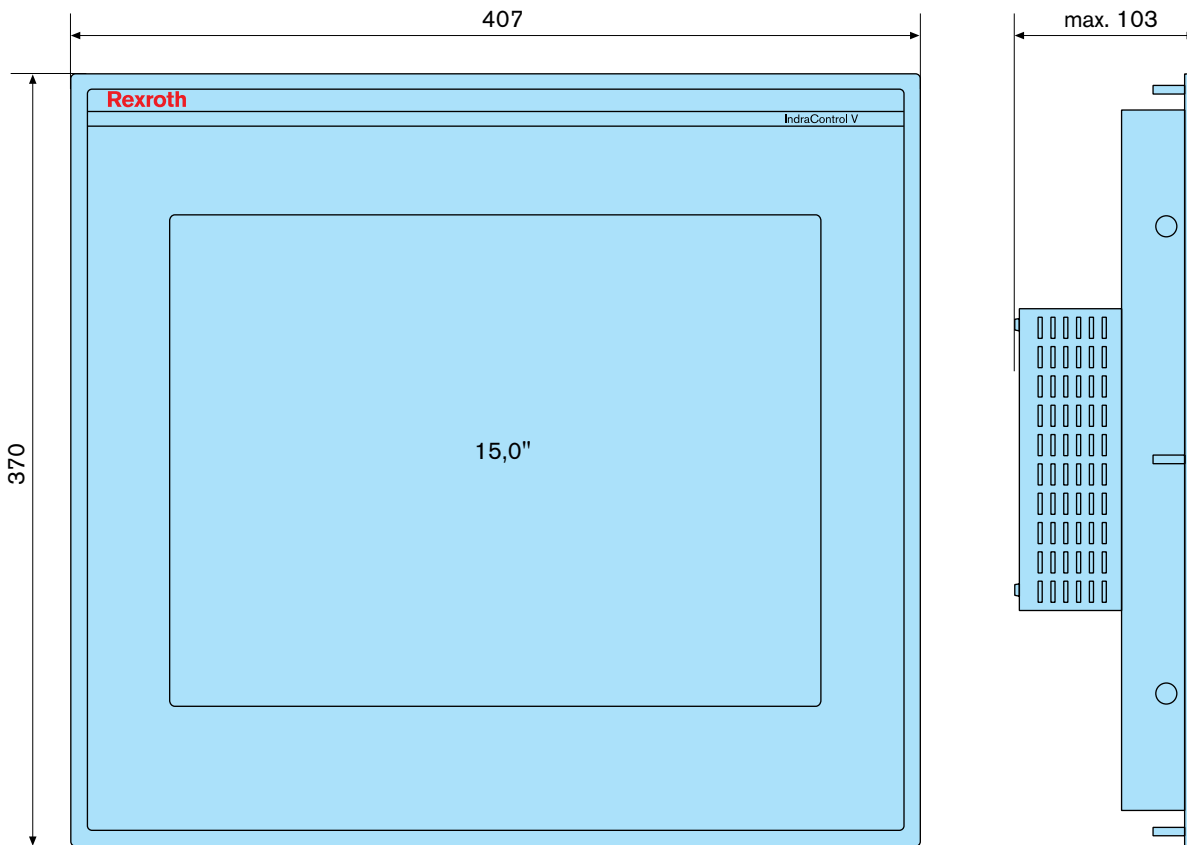
Min.	U _{min}	19 V DC	19 V DC	19 V DC	19 V DC
Max.	U _{max}	30 V DC	30 V DC	30 V DC	30 V DC
Power consumption	[W]	36	36	36	36
UPS		Short-time UPS for data backup on compact-flash			
Protection					
Overall protection category		IP20	IP20	IP20	IP20
Category at front		IP65	IP65	IP65	IP65
Ambient conditions					
Permissible temperature (operation)		+5 °C ... +45 °C			
Permissible relative humidity (operation)		5 % ... 85 %, EN 61131-2			

Dimensions

		VEP 50.3 CH	VEP 50.4 DE	VEP 50.4 BI	VEP 50.5 DF
Dimensions					
Height H	[mm]	370	370	370	370
Width B	[mm]	407	407	407	407
Depth T	[mm]	88	53	53	65

Panel-PC

15" display ■ IndraControl VEP 50



Ordering information

Type code	Description	Part number:
VEP50.3CHU-256NA-MAD-128-NN-FW	IndraControl VEP 50, PROFIBUS DP, control component	R911170855
VEP50.4DEN-512NN-A2D-NNN-NN-FW	IndraControl VEP 50, visualization	R911171924
VEP50.4BIN-512NN-A2D-NNN-NN-FW	IndraControl VEP 50, visualization	R911172477
VEP50.5DFN-2G02E-A3D-NNN-NN-FW	IndraControl VEP 50, visualization	R911172937

Panel-PC

15" display ■ IndraControl VEP 50

Firmware

Type code	Description	Part number:
FWA-VEP*03-CWL-01VRS-D0	Firmware for IndraControl VEP xx.3	R911170958
FWA-VEP*04-CWN-10VRS-D0-A*	Firmware for IndraControl VEP xx.4 (in preparation)	R911328967
FWA-VEP*04-XPE-01VRS-D0-A*	Firmware for IndraControl VEP xx.4 (in preparation)	R911334113
FWA-VEP*05-XPE-01VRS-D0-A*	Firmware für IndraControl VEH30.2 mit Windows XPe	R911337390
FWA-VEP*05-W7*-01VRS-D0-A*	Firmware für IndraControl VEPxx.4-Atom N455 (Windows 7)	R911337389

Documentation

Type code	Description	Part number:
DOK-SUPPL*-VEP**_3****-PR01-DE-P	IndraControl VEP**_03 project planning manual in German	R911323263
DOK-SUPPL*-VEP**_3****-PR01-EN-P	Operating manual English, printed version	R911323264
DOK-SUPPL*-VEP*XX_4****-PR01-DE-P	Operating manual German, printed version	R911323873
DOK-SUPPL*-VEP*XX_4****-PR01-EN-P	Operating manual German, printed version	R911323874
DOK-SUPPL*-VEP*XX_5****-ITRS-DE-P	Project development tool WinStudio (Lite, 500 variables)	R911337774
DOK-SUPPL*-VEP*XX_5****-ITRS-EN-P	IndraControl VAM 11.1 and VAM 41.1 project planning in English	R911337775

Bosch Rexroth AG

Postfach 13 57
97803 Lohr, Germany
Bgm.-Dr.-Nebel-Str. 2
97816 Lohr, Germany
Tel. +49 9352 18-0
Fax +49 9352 18-8400
www.boschrexroth.com/electrics

Local contact information can be found at:

www.boschrexroth.com/adressen

The data specified above only serve to describe the product. As our products are constantly being further developed, no statements concerning a certain condition or suitability for a certain application can be derived from our information. The information given does not release the user from the obligation of own judgment and verification.

It must be remembered that our products are subject to a natural process of wear and aging.