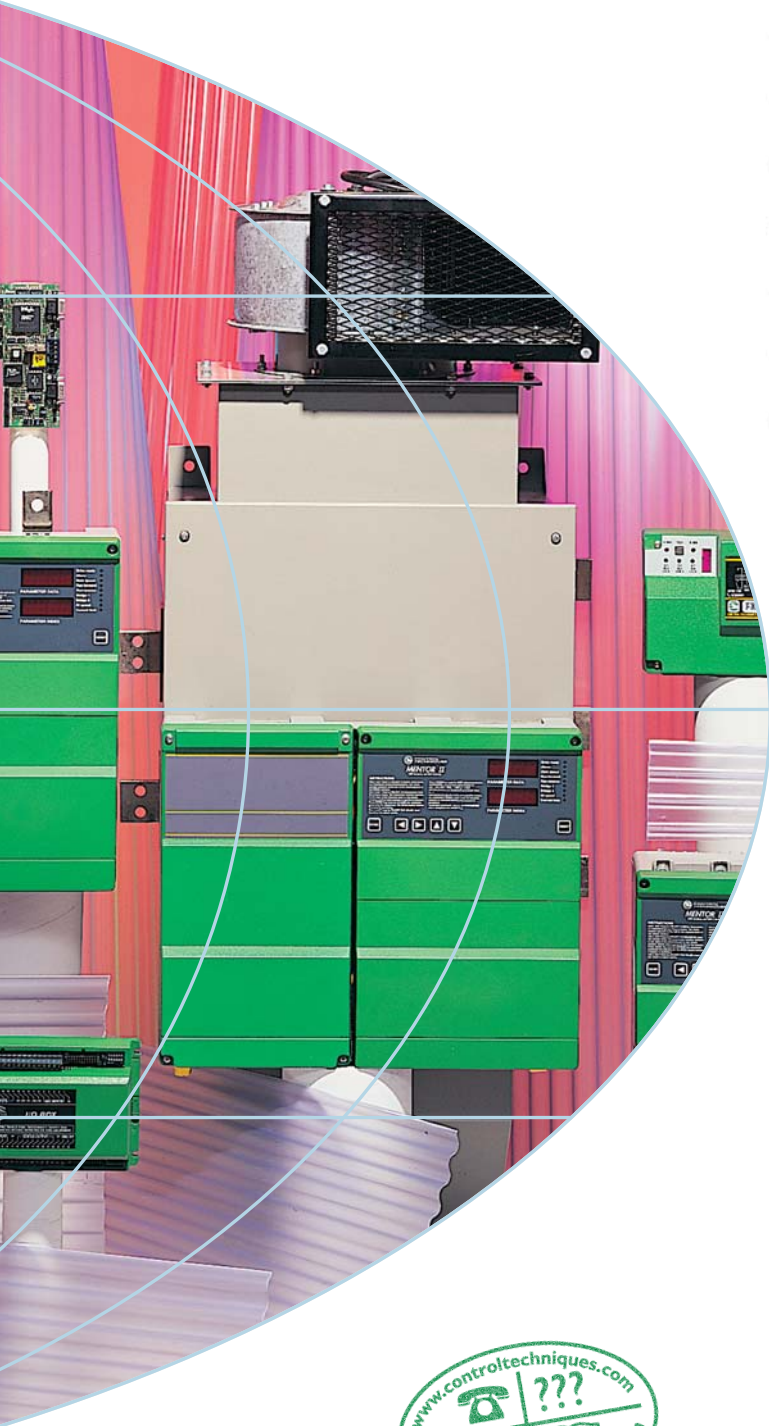




**EMERSON**<sup>™</sup>  
Industrial Automation



# Mentor II

Digital DC Drive  
25 A-1850 A



**VICPAS**  
HMI Parts Center



**CONTROL  
TECHNIQUES**

[www.controltechniques.com](http://www.controltechniques.com)

# Mentor II: the most versatile DC systems drive in the world



**The Mentor II provides a wide power range of fully programmable DC drives with a unified control interface.**

**Simple stand-alone applications are quickly configured with a minimum of parameters. Add the application module (MD29) to implement high performance drive systems with local intelligence. This intelligence can then be utilised to eliminate the master PLC by constructing**

**a distributed control system, using the CTNet fieldbus with the System Programming Tool (SYPT). When integration with a master PLC system is required, a range of fieldbus adapters is available.**

- Wide range of network communication options
- Integrated communication to PLC and host computer
- User configurable analogue and digital drive inputs
- Reduced commissioning time with simplified drive set-up
- Elongation or shrinkage control through position synchronisation
- Constant 'web' tension by continuous torque adjustment
- Easy to use PC configuration Software: Mentorsoft.

## Simple Operation

Easy set up of the drive can be done using the main control panel or via a standard communications interface from a host computer.

All operating parameters are organised into logically structured function menus.

Fast configuration of standard applications can be achieved using 10 parameters or less.

## Faster Drive Set-Up

Programming the Mentor II has never been easier. Designed to save commissioning time the drive has comprehensive data displays, easily assimilated function menus and a five-key control panel.

## Better Control

A comprehensive self-tuning algorithm gives improved current loop performance for a more uniform response at all speeds. Drive performance is also enhanced with full PID digital speed control.

## More Functions

The main circuit board has been developed to incorporate many additional features as standard not as costly options. These include serial communications and a field-weakening controller for constant power applications (M25 - M210 R).

## Massive Systems Potential

All analogue inputs and most of the digital control inputs are user-configurable, making Mentor II a true systems drive having more versatility and flexibility than ever before.

## Wide Ranging, More Flexible Communications

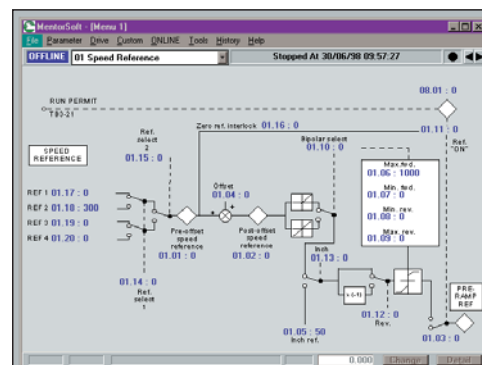
A standard RS485 port enables Mentor II to communicate directly with PLCs and host computers.

Optical Isolation means that a number of drives can be multi-dropped onto a standard RS485 interface for networking with other control devices.

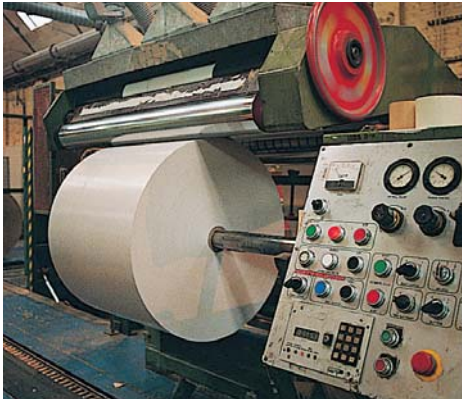
A port is also provided to accept interface cards for CT Net, Profibus-DP, Interbus S and DeviceNet.

## Mentorsoft

WINDOWS™ Based commissioning tool



# A flexible digital DC drive for multiple plant applications



## Standard Features

- Microprocessor based control circuits
- Logical push-button programming
- Advanced auto-diagnostics
- Software expandable
- Regeneration up to  $1.15 \times V_{RMS}$
- Serial interface - RS232/485
- Non-volatile memory for parameter storage
- Single and four quadrant models
- Armature voltage, tacho or encoder feedback
- Phase sequence tolerant
- 0.025% resolution for analogue speed demand
- 0.1% speed holding for 100% load change with tacho feedback
- Field loss protection
- Electronic motor-overload protection
- Feedback loss protection
- Phase loss protection
- 150% overload capacity for 30 seconds
- Taper current limit
- Armature current slew rate limiting

## Easy Expansion

### Application Module (MD29)

- Easy plug in second processor
- Cost saving facility to write application specific programs without the need to use a PLC or stand alone controller
- Programmed using DPL or SYPT an IEC 1131 compliant programming tool incorporating ladder and function block programming.
- Embedded single axis position controller

### CT Net Interface (MD29AN)

- High speed network protocol
- De-centralised "peer-to-peer" networking requiring no master PLC controller
- Programmed using SYPT

### Profibus-DP Interface (MD24)

- High speed network protocol
- Works on a centralised network system
- Generic configuration file available for Siemens S5 PLC

### DeviceNet Interface (MD25)

- High speed network protocol using the CAN hardware layer
- Works on a centralised network system
- EDS files available

### Interbus-S Interface (MDIBS)

- Easyfit interface card for Interbus-S network communications
- Works as a centralised master controller
- 500 kbit/sec fixed data rate
- Network loss detection

### Expansion I/O Module (I/O box)

- Connects to the MD29 using RS485 comms and provides remote I/O capability
- 5 analog inputs
- 3 analog outputs
- 8 digital inputs
- 8 digital outputs
- Digital I/O expandable to 32 inputs and 32 outputs
- Up to 15 I/O Boxes can be controlled on one serial communications link
- 100 metres (330 feet) maximum serial - communications cable length

### Field Controller For DC Motors (FXM5)

- Armature voltage feedback 220 V to 600 V DC
- Field current to 20 A
- 1 phase input
- Half or fully controlled thyristor output

# Multiple application solutions

## Digital Speed And Position Loop

This allows several drives to be run in speed or position synchronisation. Shaft positions can be offset or an adjustable speed ratio introduced to control elongation or shrinkage in applications such as plastics extrusion, wire drawing and textile manufacture.

## Centrewinder

Designed for maintaining a constant 'web' tension in coiling and uncoiling applications mainly in the paper, wire, plastics and metals industries.

The drive torque is continuously adjusted to compensate for changing coil diameter, machine losses and coil inertia.

## Shaft Orientation

This allows the user to specify the final position of the motor shaft relative to an electronic feedback datum, for example a marker pulse from an encoder. The position is adjusted by simply changing the value of the appropriate parameter. An output signal is provided on completion of orientation. This

function is widely used for CNC machine tool-changing and other automated applications.

## Field Controller

On drives from M25 - M210/R the MDA3 controller is fitted as standard. The field controller provides total control over the motor field current such that a constant kW characteristic can be obtained.



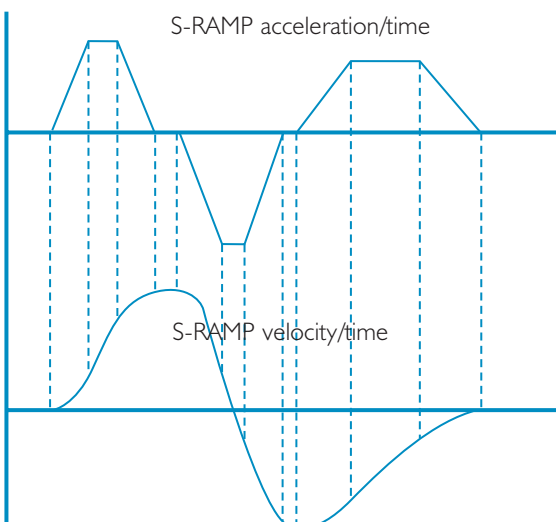
This facility is particularly useful for constant power applications such as machine tools, mixers, coilers and winders.

An integral field failure detector ensures full protection, and full digital control assists commissioning and operation. A fixed field supply is provided on units in the range M350 - M1850. For applications requiring a field controller of up to 20 A the FXM5 is available.

## 'S' Ramp

This facility provides a curved function at each end of a user defined acceleration/ deceleration ramp. The 'S' ramp in each quadrant is determined by parameters which control the linear part and the curved part of the 'S' respectively.

Due to the greater smoothness and progressive speed transitions, typical applications are lifts, hoists, cranes and conveyors.



# Technical data

| DRIVE RATINGS      |                  |   |      |  |           |
|--------------------|------------------|---|------|--|-----------|
| Drive type & Model |                  | Typical (1)<br>Motor Rating<br>@ 400 DC |      | Maximum Continuous<br>Current Rating<br>(Amps) |           |
| Single<br>Quadrant | Four<br>Quadrant | KW                                      | HP   | AC Input                                       | DC Output |
| M25                | M25R             | 7.5                                     | 10   | 21   | 25        |
| M45                | M45R             | 15                                      | 20   | 38   | 45        |
| M75                | M75R             | 30                                      | 40   | 60   | 75        |
| M105               | M105R            | 37.5                                    | 50   | 88   | 105       |
| M155               | M155R            | 56                                      | 75   | 130  | 155       |
| M210               | M210R            | 75                                      | 100  | 175  | 210       |
| M350               | M350R            | 125                                     | 168  | 292  | 350       |
| M420               | M420R            | 150                                     | 200  | 350  | 420       |
| M550               | M550R            | 200                                     | 268  | 460  | 550       |
| M700               | M700R            | 250                                     | 335  | 585  | 700       |
| M825               | M825R            | 300                                     | 402  | 690  | 825       |
| M900               | M900R            | 340                                     | 456  | 750  | 900       |
| M1200              | M1200R           | 450                                     | 603  | 1000   | 1200      |
| M1850              | M1850R           | 750                                     | 1105 | 1540   | 1850      |

- (1) This rating may be increased at higher armature voltage.
- (2) DC fuses must be fast semiconductor type, with a rated voltage of 500V DC for 400V supply and 700V DC for 480V supply.
- (3) The cable sizes are for 3-core (3-wire) and 4-core (4-wire) pvc-insulated armoured (conducted) cable with copper conductors, and laid in accordance with defined conditions.
- (4) Typical wire gauge sizes based on 300C (860F) ambient, 1.25 x rated current, 750C (1670F) copper wire with no more than 3 conductors in a conduit or raceway. Branch circuit protection must be provided by the user. All wiring must conform to NEC Art. 310 and applicable electrical codes.
- (5) Not required for Single Quadrant. May not be required in applications where load inertia is low and regeneration infrequent.
- (6) Refer to NEC Table 310-16 for wire sizes.
- (7) M25 - M210 fitted with MDA3 field controller as standard.
- (8) Fixed voltage. Optional field controller FXM5 available.

| INSTALLATION DATA  |               |                          |                   |            |   |         |                |                              |
|--------------------|---------------|--------------------------|-------------------|------------|---|---------|----------------|------------------------------|
| Drive Type & Model |               | Recommended Fuse Ratings |                   |            | Typical Cable Size AC Input & DC Output |         | Cooling Method | Max Field Current Rating (A) |
| Single Quadrant    | Four Quadrant | HRC AC In (A)            | Semiconductor (2) |            | mm <sup>2</sup> (3)                     | AWG (4) |                |                              |
|                    |               |                          | AC In (A)         | DC Out (A) |   |         |                |                              |
| M25                | M25R          | 32                       | 35                | 40 (5)     | 4mm <sup>2</sup>                        | 10      | Convection     | 8 (7)                        |
| M45                | M45R          | 50                       | 60                | 70 (5)     | 6mm <sup>2</sup>                        | 6       | Convection     | 8 (7)                        |
| M75                | M75R          | 100                      | 100               | 125 (5)    | 25mm <sup>2</sup>                       | 2       | Convection     | 8 (7)                        |
| M105               | M105R         | 100                      | 125               | 175 (5)    | 35mm <sup>2</sup>                       | 1/0     | Fan Cooled     | 8 (7)                        |
| M155               | M155R         | 160                      | 175               | 250 (5)    | 50mm <sup>2</sup>                       | 3/0     | Fan Cooled     | 8 (7)                        |
| M210               | M210R         | 200                      | 250               | 300 (5)    | 95mm <sup>2</sup>                       | 300MCM  | Fan Cooled     | 8 (7)                        |
| M350               | M350R         | 355                      | 400               | 550 (5)    | 150 mm <sup>2</sup>                     | (6)     | Fan Cooled     | 10 (8)                       |
| M420               | M420R         | 450                      | 500               | 700 (5)    | 185mm <sup>2</sup>                      | (6)     | Fan Cooled     | 10 (8)                       |
| M550               | M550R         | 560                      | 700               | 900 (5)    | 300mm <sup>2</sup>                      | (6)     | Fan Cooled     | 10 (8)                       |
| M700               | M700R         | 630                      | 900               | 1000 (5)   | 2x185mm <sup>2</sup>                    | (6)     | Fan Cooled     | 10 (8)                       |
| M825               | M825R         | 800                      | 1000              | 1200 (5)   | 2x240mm                                 | (6)     | Fan Cooled     | 10 (8)                       |
| M900               | M900R         | 1000                     | 1200              | 2x700 (5)  | 2x240mm <sup>2</sup>                    | (6)     | Fan Cooled     | 20 (8)                       |
| M1200              | M1200R        | 1250                     | 2x700             | 2x900 (5)  | 3x400mm <sup>2</sup>                    | (6)     | Fan Cooled     | 20 (8)                       |
| M1850              | M1850R        | 2000                     | 2x1200            | 2x1000 (5) | 3x400mm <sup>2</sup>                    | (6)     | Fan Cooled     | 20 (8)                       |



**Drive & Application Centres**

**AUSTRALIA**  
 Melbourne Application Centre  
 A.C.N. 003 815 281  
 Tel: 613 973 81777  
 Fax: 613 9729 3200  
 After Hours: 61 2 9963-5271

Sydney Drive Centre  
 A.C.N. 003 815 281  
 Tel: 61 2 9838 7222  
 Fax: 61 2 9838 7764  
 After Hours: 61 2 9963 5271

**AUSTRIA**  
 Linz Drive Centre  
 Tel: 43 7229 789480  
 Fax: 43 7229 7894810  
 After Hours: 43 7215 3502

**BELGIUM**  
 Brussels Drive Centre  
 Tel: 32 1574 0700  
 Fax: 32 1574 0799

**BRAZIL**  
 Emerson do Brazil Ltda  
 Tel: 55 11 3618 6569  
 Fax: 1 905 201 4694  
 After Hours: 1 800 893 2321

**CANADA**  
 Toronto Drive Centre  
 Tel: 1 905 201 4699  
 Fax: 1 905 201 4694  
 After Hours: 1 800 893 2321

Calgary Drive Centre  
 Tel: 1 403 253 8738  
 Fax: 1 403 255 4323

**CHINA**  
 Shanghai Drive Centre  
 Tel: 86 21 5426 0668  
 Fax: 86 21 5426 0669

Beijing Application Centre  
 Tel: 86 10 856 31122 ext 820  
 Fax: 86 10 856 35029

**ARGENTINA**  
 Euro Techniques SA  
 Tel: 54 11 4331 7820  
 Email: eurotech@eurotechsa.com.ar

**BAHRAIN**  
 Iftikhar Electrical Est.  
 Tel: 973 271 1116  
 Email: ieepower@batelco.com.bh

**BRAZIL**  
 ACIEL Comercio e Servicos LTDA  
 Tel: 55 11 5565 5798  
 Email: aciel@aciell.com.br

Positronic Sistemas Industrias Ltda.  
 Tel: 55 11 3832 2738  
 Email: info@positronic.com.br

**BULGARIA**  
 BLS - Automation Ltd  
 Tel: 359 32 968 007  
 Email: info@blsautomation.com

**CENTRAL AMERICA**  
 Mercado Industrial Inc.  
 Tel: 1 305 854 9515  
 Email: rsaybe@mercadoindustrialinc.com

**CHILE**  
 Ingeniería Y Desarrollo  
 Tecnología S.A  
 Tel: 56 2741 9624  
 Email: idt@idt.d

**CZECH REPUBLIC**  
 Brno Drive Centre  
 Tel: 420 541 192111  
 Fax: 420 541 192115  
 After Hours: 420 541 192 119

**DENMARK**  
 Copenhagen Drive Centre  
 Tel: 45 4369 6100  
 Fax: 45 4369 6101  
 After Hours: 45 4369 6100

**FRANCE**  
 Angouleme Drive Centre  
 Tel: 33 5 4564 5454  
 Fax: 33 5 4564 5400

**GERMANY**  
 Bonn Drive Centre  
 Tel: 49 2242 8770  
 Fax: 49 2242 877277  
 After Hours: 49 1714 964777

Chemnitz Drive Centre  
 Tel: 49 3722 52030  
 Fax: 49 3722 520330  
 After Hours: 49 1714 964777

Darmstadt Drive Centre  
 Tel: 49 6251 177008  
 Fax: 49 6251 177098  
 After Hours: 49 1714 964777

**GREECE**  
 Athens Application Centre  
 Tel: 0030 210 57 86086/088  
 Fax: 0030 210 57 86087

**HOLLAND**  
 Rotterdam Drive Centre  
 Tel: 31 184 420555  
 Fax: 31 184 420721  
 After Hours: 31 184 420555

**HONG KONG**  
 Hong Kong Application Centre  
 Tel: 852 2979 5271  
 Fax: 852 2979 5220  
 After Hours: 852 2979 5271

**COLOMBIA**  
 Sistronic LTDA  
 Tel: 57 2 555 60 00  
 Email: sistronic@telesat.com.co

**CROATIA**  
 Koncar - MES d.d.  
 Tel: 385 1 366 7273  
 Email: nabava@koncar-mes.hr

**CYPRUS**  
 Acme Industrial Electronic  
 Services Ltd  
 Tel: 3572 5 332181  
 Email: acme@cytanet.com.cy

**EGYPT**  
 Samiram  
 Tel: 202 7603877/202 7605950  
 Email: corporate@samiram.com

**FINLAND**  
 SKS Control  
 Tel: 358 985 2661  
 Email: control@sksf.fi

**HUNGARY**  
 Control-VH Kft  
 Tel: 361 431 1160  
 Email: info@controlvh.hu

**ICELAND**  
 Samey ehf  
 Tel: 354 510 5200  
 Email: samey@samey.is

**INDIA**  
 Mumbai Application Centre  
 Tel: 91 20 612 7956, 612 8415  
 Fax: 91 20 611 3312

Kolkata Application Centre  
 Tel: 91 33 2357 5302/2357 5306  
 Fax: 91 33 2357 3435  
 After Hours: 91 98 3004 8562

Chennai Drive Centre  
 Tel: 91 44 2496 1123/  
 2496 1130/2496 1083  
 Fax: 91 44 2496 1602  
 After Hours: 91 44 2496 1083

New Delhi Application Centre  
 Tel: 91 11 2 576 4782/  
 91 11 2 581 3166  
 Fax: 91 11 51 539216

**IRELAND**  
 Dublin Drive Centre  
 Tel: 353 45 448200  
 Fax: 353 45 433622

**ITALY**  
 Milan Drive Centre  
 Tel: 39 02575 751  
 Fax: 39 02575 12858  
 After Hours: 39 02575 751

Reggio Emilia Application Centre  
 Tel: 39 02575 751  
 Fax: 39 02575 12858  
 After Hours: 39 02575 751

Vicenza Drive Centre  
 Tel: 39 0444 933400  
 Fax: 39 0444 933401  
 After Hours: 39 02 575 751

**KOREA**  
 Seoul Application Centre  
 Tel: 82 31 703 7169  
 Fax: 82 31 703 7168  
 After Hours: 82 31 703 7185

**INDONESIA**  
 Pt Apikon Indonesia  
 Tel: 65 6468 8979  
 Email: ooivc@controltechniques.com.my

Pt Yua Esa  
 Sempurna Sejahtera  
 Tel: 65 6468 8979  
 Email: ooivc@controltechniques.com.my

**ISRAEL**  
 Dor Drives Systems Ltd  
 Tel: 972 3900 7595  
 Email: info@dor1.co.il

**KENYA**  
 Kassam & Bros Co. Ltd  
 Tel: 254 2 556 418  
 Email: kassambros@bidi.com

**KUWAIT**  
 Saleh Jarhal & Company WLL  
 Tel: 965 483 2358  
 Email: sjceng@almullagroup.com

**LATVIA**  
 EMT  
 Tel: 371 760 2026  
 Email: janis@emt.lv

**LEBANON**  
 Black Box Automation & Control  
 Tel: 961 1 443773  
 Email: info@blackboxcontrol.com

**MALAYSIA**  
 Kuala Lumpur Drive Centre  
 Tel: 603 5634 9776  
 Fax: 603 5633 9592  
 After Hours: 60 12 333 8355

**REPUBLIC OF SOUTH AFRICA**  
 Johannesburg Drive Centre  
 Tel: 27 11 462 1740  
 Fax: 27 11 462 1941  
 After Hours: 27 11 462 1740

Cape Town Application Centre  
 Tel: 27 21 556 0245  
 Fax: 27 86 619 8283  
 After Hours: 27 11 462 1740

**RUSSIA**  
 Moscow Application Centre  
 Tel: 7 495 981 9811  
 Fax: 7 495 981 9815

**SINGAPORE**  
 Singapore Drive Centre  
 Tel: 65 6468 8979  
 Fax: 65 6468 6982  
 After Hours: 65 9752 5828/  
 9636 0323

**SPAIN**  
 Barcelona Drive Centre  
 Tel: 34 93 680 1661  
 Fax: 34 93 680 0903  
 /34 93 680 2823  
 After Hours: 34 610 554540

Bilbao Application Centre  
 Tel: 34 94 620 3646  
 Fax: 34 94 681 1406  
 After Hours: 34 61 055 4547

Valencia Drive Centre  
 Tel: 34 96 154 2900  
 Fax: 34 96 153 2906  
 After Hours: 34 66 642 8514

**SWEDEN**  
 Stockholm Application Centre  
 Tel: 468 554 241 00  
 Fax: 468 554 241 10  
 After Hours: 467 044 183 29

**SWITZERLAND**  
 Lausanne Application Centre  
 Tel: 41 21 637 7070  
 Fax: 41 21 637 7071  
 After Hours: 41 79 357 8683

Zurich Drive Centre  
 Tel: 41 56 201 4242  
 Fax: 41 56 201 4243  
 After Hours: 41 79 357 8683

**TAIWAN**  
 Taipei Application Centre  
 Tel: 886 22325 9555  
 Fax: 886 22705 9131  
 After Hours: 886 92186 6502

**THAILAND**  
 Bangkok Drive Centre  
 Tel: 66 2580 7644  
 Fax: 66 2591 4559  
 A/Hours Sales: 66 1443 4095  
 A/Hours Service: 66 1443 4098

**TURKEY**  
 Istanbul Drive Centre  
 Tel: 90 216 4182420  
 Fax: 90 216 4182423  
 After Hours: 90 216 418 2420

**UAЕ**  
 Dubai Application Centre  
 Tel: 971 4 883 8650  
 Fax: 971 4 883 8651

**UNITED KINGDOM**  
 Telford Drive Centre  
 Tel: 44 1952 213700  
 Fax: 44 1952 213701  
 After Hours: 44 1952 213700

**USA**  
 California Drive Centre  
 Tel: 1 562 943 0300  
 Fax: 1 562 902 9360

Charlotte Application Centre  
 Tel: 1 704 393 3366  
 Fax: 1 704 393 0900  
 After Hours: 1 800 893 2321

Chicago Application Centre  
 Tel: 1 630 752 9090  
 Fax: 1 630 752 9555  
 After Hours: 1 800 893 2321

Cleveland Drive Centre  
 Tel: 1 440 717 0123  
 Fax: 1 440 717 0133  
 After Hours: 1 800 893 2321

Florida Drive Centre  
 Tel: 1 239 693 7200  
 Fax: 1 239 693 2431

Latin America Sales Office  
 Tel: 1 305 818 8897  
 Fax: 1 305 818 8888  
 Email: alfredo.rivas@emersonct.com

Minneapolis US Headquarters  
 Tel: 1 952 995 8000  
 Fax: 1 952 995 8020/8099  
 After Hours: 1 800 893 2321

Oregon Drive Centre  
 Tel: 1 503 266 2094  
 Fax: 1 503 266 1152

Providence Drive Centre  
 Tel: 1 401 541 7277  
 Fax: 1 401 541 7266  
 After Hours: 1 800 893 2321

Utah Drive Centre  
 Tel: 1 801 566 5521  
 Fax: 1 801 566 5673

**Distributors**

**POLAND**  
 APATOR CONTROL Sp. z o.o  
 Tel: 48 56 6191 207  
 Email: drives@apator.torun.pl

**PORTUGAL**  
 Harker Sumner S.A  
 Tel: 351 22 947 8090  
 Email: drives.automation@harkerpt

**PUERTO RICO**  
 Powermotion  
 Tel: 1 787 843 3648  
 Email: dennis@powermotionpr.com

**QATAR**  
 AFI Sitna Technologies  
 Tel: 974 468 4442  
 Email: jp33@qatar.net.qa

**ROMANIA**  
 Dor Drives International  
 Tel: 40 21 337 3465  
 Email: dordrive@zappmobile.ro

**SAUDI ARABIA**  
 A. Abunayyan Electric Corp.  
 Tel: 9661 477 9111  
 Email: aec-salesmarketing@abunayyangroup.com

**SERBIA & MONTENEGRO**  
 Master Inzenjering d.o.o  
 Tel: 381 24 551 605  
 master@eunet.yu

**SLOVAKIA**  
 EMERSON A.S  
 Tel: +421 32 7700 369  
 petersk@vuma.sk

**SLOVENIA**  
 PS Logatec  
 Tel: 386 1 750 8510  
 Email: ps-log@ps-log.si

**TUNISIA**  
 SIA Ben Djemaa & CIE  
 Tel: 216 1 332 923  
 Email: bendjemaa@planet.tn

**URUGUAY**  
 Secoin S.A  
 Tel: 5982 2093815  
 Email: secoin@adinet.com.uy

**VENEZUELA**  
 Digimex Sisternas C.A.  
 Tel: 58 243 551 1634

**VIETNAM**  
 N.Duc Thinh  
 Tel: 84 8 9490633  
 Email: infotech@nducthinh.com.vn