

**ELECTRA-SAVER® & ELECTRA-SAVER II®
STATIONARY BASE-MOUNTED
COMPRESSORS**

Parts List Manual

**MODELS
LOS MODELOS
DES MODÈLES
MODELOS:**

EAU99U

EBU99E

200 HP

213-9-503
Version 03
June 8, 2020

MAINTAIN COMPRESSOR RELIABILITY AND PERFORMANCE WITH GENUINE GARDNER DENVER® COMPRESSOR PARTS AND SUPPORT SERVICES

Gardner Denver® Compressor genuine parts, manufactured to design tolerances, are developed for optimum dependability, specifically for Gardner Denver compressor systems. Design and material innovations are the result of years of experience with hundreds of different compressor applications. Reliability in materials and quality assurance is incorporated in our genuine replacement parts.

Your authorized Gardner Denver Compressor distributor offers all the backup you'll need. A worldwide network of authorized distributors provides the finest product support in the air compressor industry.

Your authorized distributor can support your Gardner Denver air compressor with these services:

1. Trained parts specialists to assist you in selecting the correct replacement parts.
2. Factory warranted new and remanufactured rotary screw airends. Most popular model remanufactured airends are maintained in stock at the factory, for purchase on an exchange basis with liberal core credit available for the replacement unit.
3. A full line of factory tested AEON™ compressor lubricants specifically formulated for use in Gardner Denver compressors.
4. Repair and maintenance kits designed with the necessary parts to simplify servicing your compressor.

Authorized distributor service technicians are factory trained and skilled in compressor maintenance and repair. They are ready to respond and assist you by providing fast, expert maintenance and repair services.

To Contact Gardner Denver or locate your local distributor:

Visit: www.gardnerdenver.com/gdproducts

Or

Call: (800) 682-9868

INSTRUCTIONS FOR ORDERING REPAIR PARTS

When ordering parts, specify Compressor MODEL, Method of Cooling, HORSEPOWER and SERIAL NUMBER (see nameplate on unit). The Airend Serial Number is also stamped on top of the discharge bearing carrier casting.

All orders for Parts should be placed with the nearest authorized distributor.

Where NOT specified, quantity of parts required per compressor or unit is one (1); where more than one is required per unit, quantity is indicated in parenthesis. SPECIFY EXACTLY THE NUMBER OF PARTS REQUIRED.

DO NOT ORDER BY SETS OR GROUPS.

To determine the Right-Hand and Left-Hand side of a compressor, stand at the motor end and look toward the compressor. Right-Hand and Left- Hand are indicated in parenthesis following the part name, i.e. (RH) and (LH), when appropriate.

TOTAL PRODUCT SUPPORT, GARDNER DENVER'S CONTINUING COMMITMENT TO YOUR AIR COMPRESSOR PERFORMANCE

Commitment to total product support continues long after the purchase of your quality Gardner Denver rotary screw compressor.

Gardner Denver original parts incorporate years of experience and improvements in design, materials and quality assurance. Maintaining your compressor investment with Gardner Denver parts will insure protection for the air compressor unit and long, dependable service life.

Your authorized Gardner Denver compressor distributor maintains a complete stock of all common maintenance parts, factory approved AEON lubricants, and Gardner Denver factory warranted exchange airends. In addition, authorized distributor technicians are factory trained, and can provide complete diagnostic, compressor maintenance and repair services.

This manual is designed to assist you in maintaining high performance and receiving many years of dependable service you expect from your Gardner Denver compressor.

REMANUFACTURED AIRENDS

Whenever an airend requires replacement or repair, Gardner Denver offers an industry unique, factory remanufactured airend exchange program. From its modern factory, Gardner Denver is committed to supplying you with the highest quality, factory remanufactured airends that are guaranteed to save you time and money.

Immediately Available

Repair downtime costs you money, which is why the most popular models are in inventory at all times.

Skilled Craftsmen

Our Remanufacturing assembly technicians average over 20 years of experience with air compression products.

Precision Remanufacturing

All potentially usable parts are thoroughly cleaned, inspected and analyzed. Only those parts that can be brought back to original factory specifications are remanufactured. Every remanufactured airend receives a new overhaul kit: bearings, gears, seals, sleeves and gaskets.

Extensive Testing

Gardner Denver performs testing that repair houses just don't do. Magnaflux and ultrasonic inspection spot cracked or stressed castings, monochromatic light analysis exposes oil leaks, and coordinate measurement machine inspects to +/- .0001", insuring that all remanufactured airends meet factory performance specifications.

Warranty

Gardner Denver backs up every remanufactured airend with a warranty...27 months from purchase.

Gardner Denver remanufactured airends deliver *quality without question...year in and year out.*

Call Gardner Denver for information on the airend exchange program and the name of your authorized distributor.

Phone Number: 800-682-9868 or
Fax: 217-224-7814

TABLE OF CONTENTS

Maintain Compressor Reliability And Performance With Genuine Gardner Denver Compressor Parts And Support Services.....	2
Instructions For Ordering Repair Parts	2
Total Product Support, Gardner Denver’s Continuing Commitment To Air Compressor Performance	3
Remanufactured Airends	3
Airend Selection And Repair Kits	6
Cylinder Group, Turn Valve.....	7
Cylinder, Base Load.....	8
Cylinder Group.....	9
Discharge Housing Group, All Models	10, 11
Discharge Flange Mounting Group	12
Bearing Cover Plate Group	13
Oil Seal Detail	14
Miscellaneous Parts Group	15
Turnvalve Spacer Group	16
Turn Valve, EAU	17
Inlet Valve	18
Air Filter & Mounting	19
Separator Housing	20
Separator Group	21
Discharge Piping.....	22
Oil Return Line	23
Oil Inlet Tube.....	24
Filter Assembly	25
Cooler Group	26, 27
Water Cooled Heat Exchanger, With Aftercooler	28, 29
Water Cooled Heat Exchanger, Without Aftercooler	30, 31
Repair Parts For Heat Exchanger And Aftercooler	32
Miscellaneous Electrical Parts	33
Control Schematic.....	34
Control Schematic.....	35
Minimum Pressure/Check Valve	36
Turn Valve Actuator, EAU Only.....	37
Enclosure Vent Fan Assembly	38

Enclosure	39 thru 43
Air Cooled Baffle	44
Air Cooled Baffle Hardware.....	45
Enclosure, Water Cooled	46
Compressor Base Group	47
Main Motor Group	48
Motor Group, Main Drive Motors.....	49
Overload Relay Heater Conversion Listing	50
Airsmart Display Panel.....	51
Controller Assembly, Wye-Delta, Size N, Starter Control Box	52
Controller Assembly With Wye-Delta Starter, Less Current Monitor, 125,150&200HP, 380,460&575V, Size N	53
Controller Assembly, With Wye-Delta Starter & Current Monitor, Size 5, Starter Control Box	54
Controller Assembly With Wye-Delta Starter & Currnet Monitor, 200HP, 380&460V, Size 5.....	55
Controller Assembly - Less Starter And With Current Monitor – 200, 230, 380, 460 & 575 Volt.....	56, 57
Identification And Instruction Group	58, 59
Repair Kit	60, 61

For Operating and Service Instructions see:

Service Manual:----- 13-21-602
Controller Manual:----- 13-17-600
Controller Com Module Manual:-13-17-604

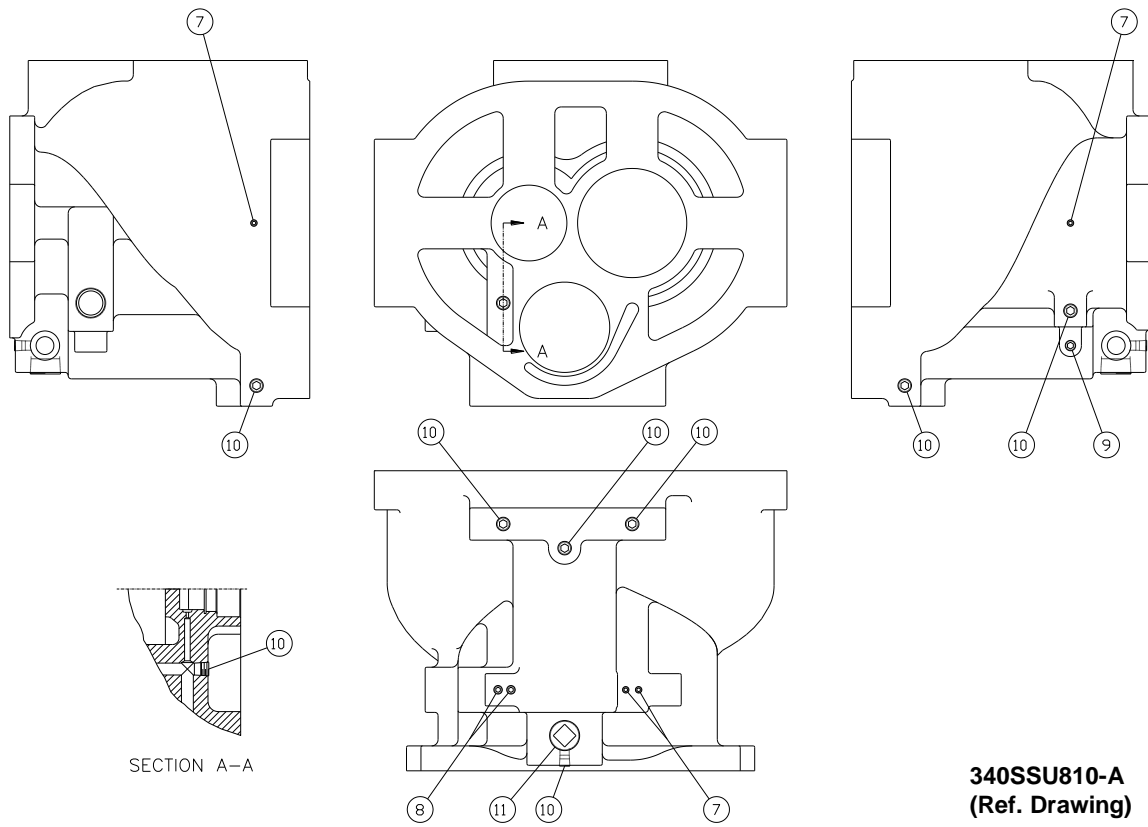
AIREND SELECTION AND REPAIR KITS

Model	HP	PSI	Airend w/Inlet Valve	Reman Airend w/Inlet Valve	Bearing Kit *	Gasket Kit	Inlet Valve Kit	Turn Valve Kit	Drive Shaft Seal Kit	Drive Shaft Wear Sleeve Removal & Installation Kit
EAU	200	100	SSUAVABM01S	SSUAVABM01X	331SSU6013	334SSU6013	301EAQ6013	335SSU6013	324SSU6013	302SSU4017
		125	SSUAVABM01S	SSUAVABM01X	331SSU6013	334SSU6013	301EAQ6013	335SSU6013	324SSU6013	302SSU4017
EBU	200	100	SSUDVAAM01S	SSUDVAAM01X	331SSU6013	334SSU6013	301EAQ6013	N/A	324SSU6013	302SSU4017
		125	SSUDVAAM02S	SSUDVAAM01X	331SSU6013	334SSU6013	301EAQ6013	N/A	324SSU6013	302SSU4017

* When order Bearing Kits, also order Gasket Kit and Drive Shaft Seal Kit.

For listing of Repair Parts included in Kit numbers above, see Repair Kit Section, pages 60 & 61.

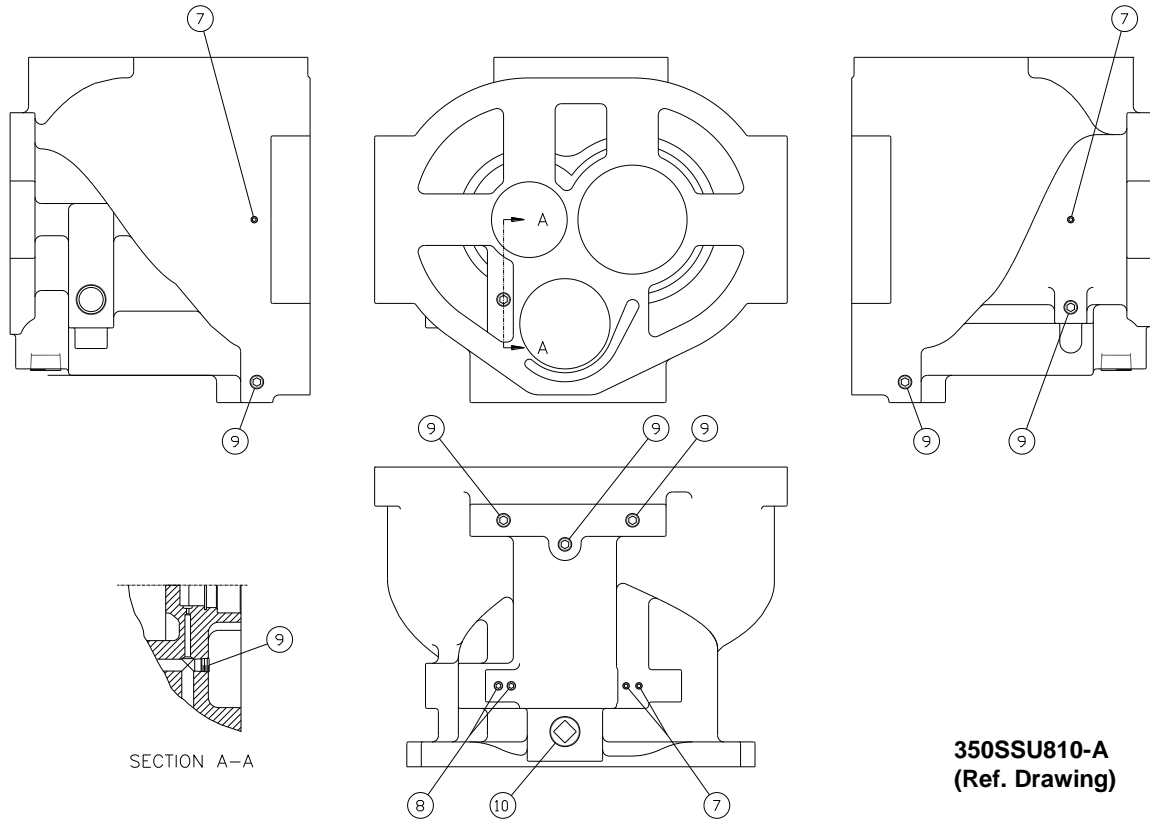
CYLINDER GROUP, TURN VALVE



B/M:
300SSU4042

Ref. No.	Name of Part	Qty.	Part No.
7	PLUG.....	4	64AA5
8	PLUG.....	2	64AA4
9	PLUG.....	1	64AA7
10	PLUG.....	8	64AA3
11	PLUG.....	1	64B7

CYLINDER, BASE LOAD

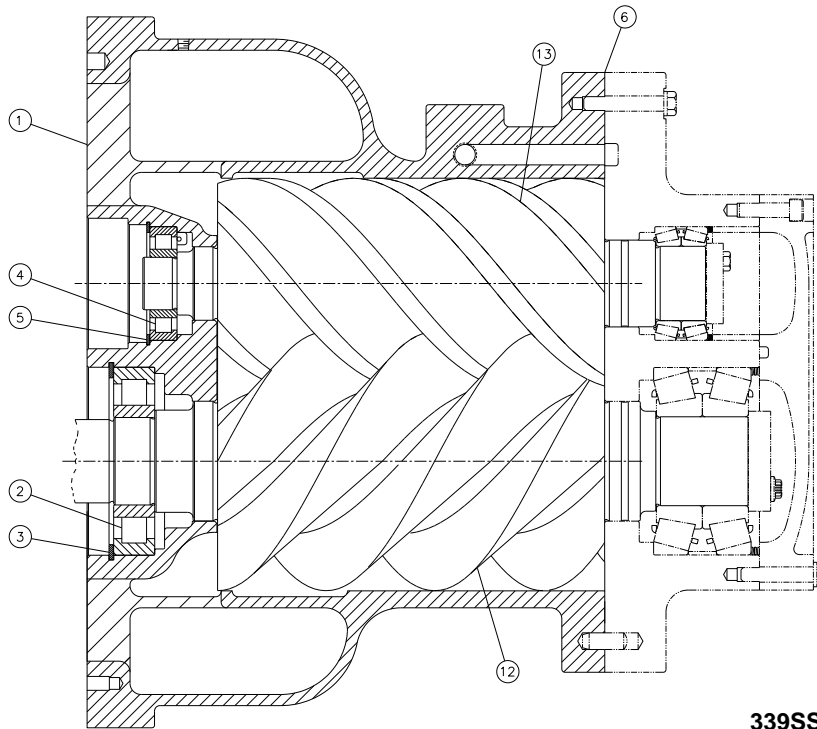


350SSU810-A
(Ref. Drawing)

B/M:
301SSU4042

Ref. No.	Name of Part	Qty.	Part No.
7	PLUG.....	4	64AA5
8	PLUG.....	2	64AA4
9	PLUG.....	7	64AA3
10	PLUG.....	1	64B7

CYLINDER GROUP



339SSU810-B
(Ref. Drawing)

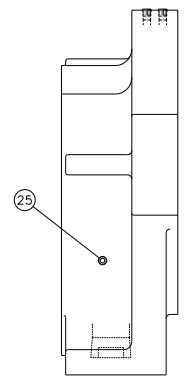
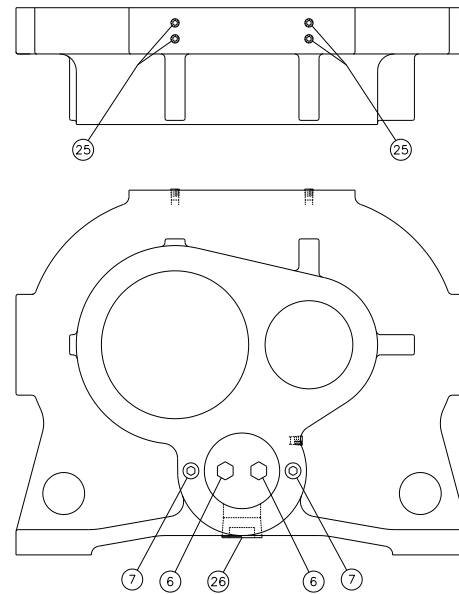
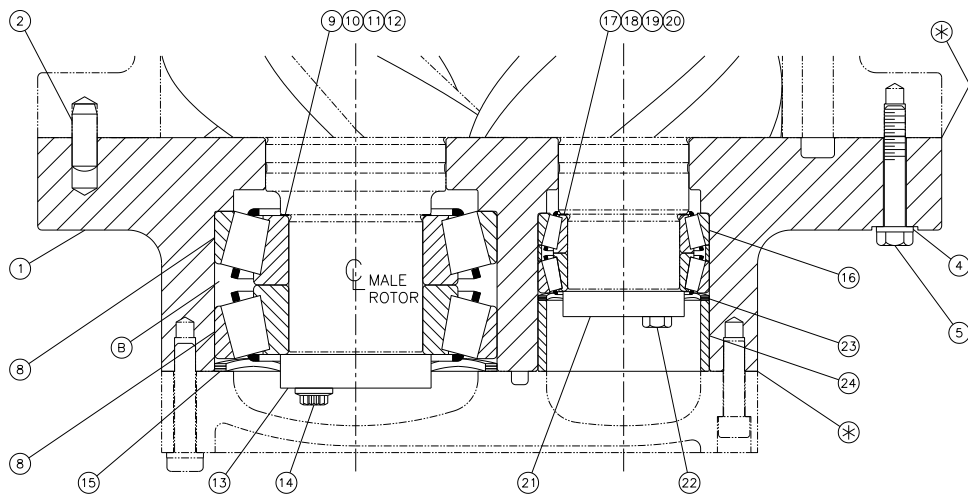
B/M:
300SSU4042
301SSU4042

Ref. No.	Name of Part	Qty.	Part No.
1	CYLINDER, AIR, TURN VALVE	1	**
* 2	BEARING, ROLLER	1	12BA52
* 3	RING, RETAINER	1	65W61
* 4	BEARING, ROLLER	1	12W34
* 5	RING, RETAINING	1	65W14
6	GASKET, ELIMINATOR	1	25BC222

* Parts included in Bearing Kit Part Number 331SSU6013. Refer to page 60.

** Shown for reference only.

DISCHARGE HOUSING GROUP, ALL MODELS



342SSU810-B
(Ref. Drawing)

DISCHARGE HOUSING GROUP, ALL MODELS

**B/M:
310SSU4044**

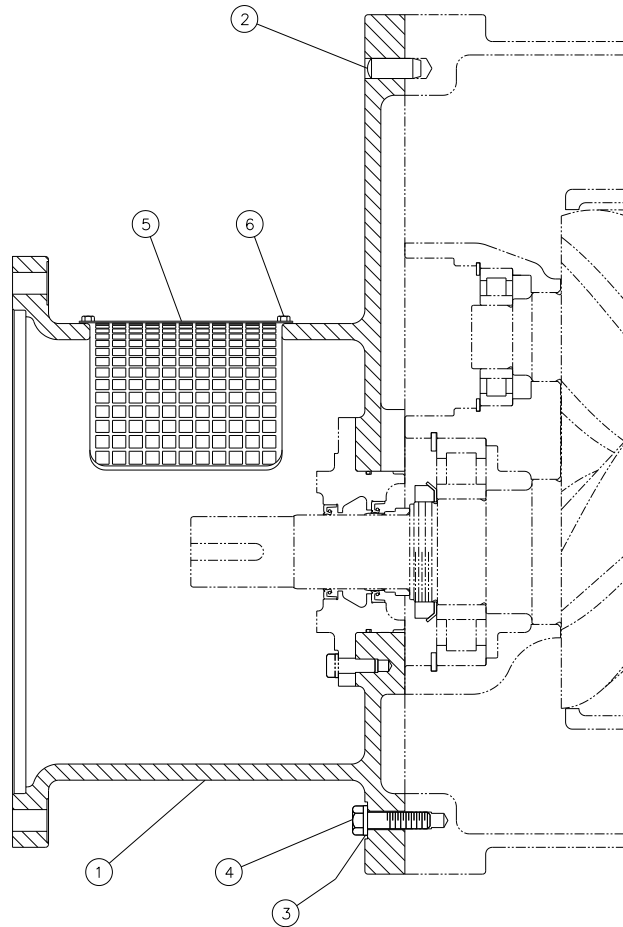
Ref. No.	Name of Part	Qty.	Part No.
1	HOUSING, BEARING	1	**
2	PIN, DOWEL	1	**
3	PIN (NOT SHOWN)	1	**
4	LOCK WASHER	24	**
5	SCREW	22	**
6	SCREW	2	**
7	SCREW	2	**
* 8	BEARING	2	12BA79
*** 9	SHIM SET	3	77H108002
*** 10	SHIM SET	3	77H108003
*** 11	SHIM SET	3	77H108005
*** 12	SHIM SET	2	77H108015
13	PLATE, BEARING RETAINER	1	**
14	SCREW	3	**
* 15	SPRING	1	78W110
* 16	BEARING	1	12BA192
*** 17	SHIM	3	77H50002
*** 18	SHIM	3	77H50003
*** 19	SHIM	3	77H50005
*** 20	SHIM	2	77H50015
21	PLATE, BEARING RETAINER	1	**
22	SCREW	3	**
* 23	SPRING	1	78W90
24	SPACER	1	**
25	PLUG (NOT SHOWN)	5	**
26	PLUG (NOT SHOWN)	1	**

* Parts included in Bearing Kit Part Number 331SSU6013, page 60.

** For reference only.

*** Parts included in Gasket Kit Part Number 334SSU6013, page 61.

DISCHARGE FLANGE MOUNTING GROUP

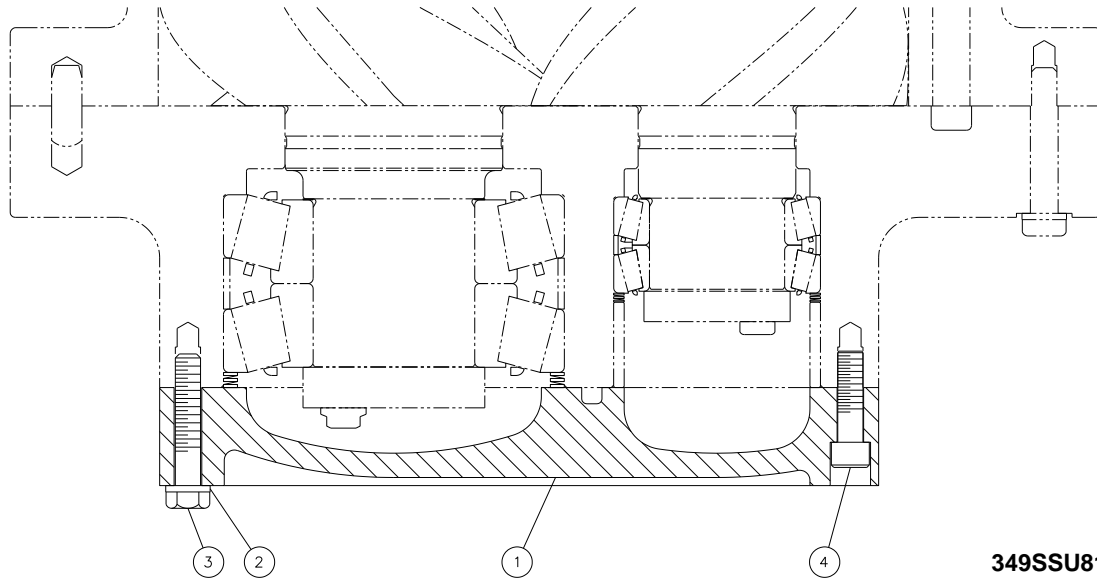


344SSU810-A
(Ref. Drawing)

B/M:
301SSU4017

Ref. No.	Name of Part	Qty.	Part No.
1	ADAPTOR	1	301SSU170
2	PIN, DOWEL	2	62M112
3	LOCK WASHER	20	95B7
4	SCREW	20	655EF100
5	GUARD, COUPLING	1	301SSU339
6	SCREW	4	75LM51
7	PLUG (NOT SHOWN)	1	64AA5

BEARING COVER PLATE GROUP

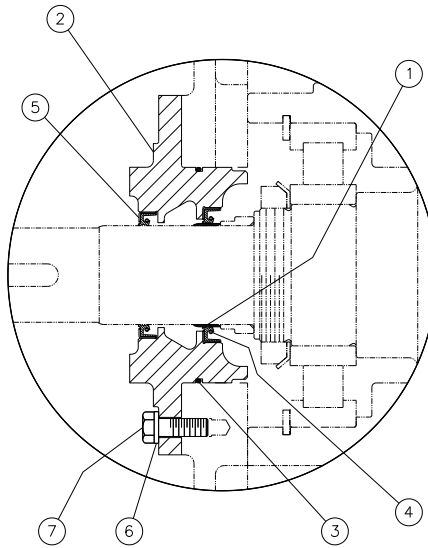


349SSU810-A
(Ref. Drawing)

B/M:
300SSU4037

Ref. No.	Name of Part	Qty.	Part No.
1	PLATE, BEARING COVER	1	304SSU315
2	LOCK WASHER	10	95B7
3	SCREW	10	655EF130
4	SCREW	9	75P197

OIL SEAL DETAIL



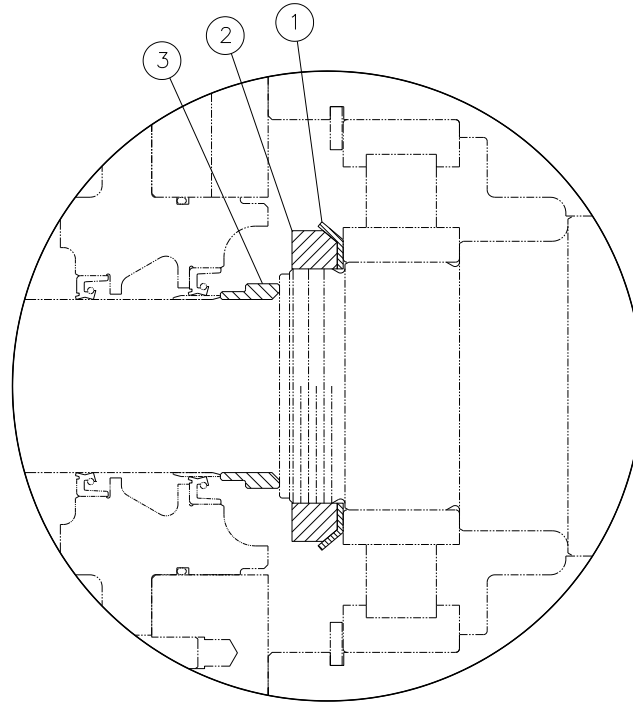
348SSU810-A
(Ref. Drawing)

B/M:
302SSU6029

Ref. No.	Name of Part	Qty.	Part No.
* 1	SLEEVE, WEAR	1	80M28
2	HOUSING, SEAL	1	203SSU362
* 3	O-RING	1	25BC205
* 4	SEAL, OIL	1	60DD571
* 5	SEAL, OIL	1	60DD689
6	LOCK WASHER.....	6	95B5
7	SCREW	6	655EE060
* 8	VALVE, CHECK (NOT SHOWN).....	1	90AR923

* Parts included in Oil Seal Kit Part Number 324SSU6013, page 61.

MISCELLANEOUS PARTS GROUP

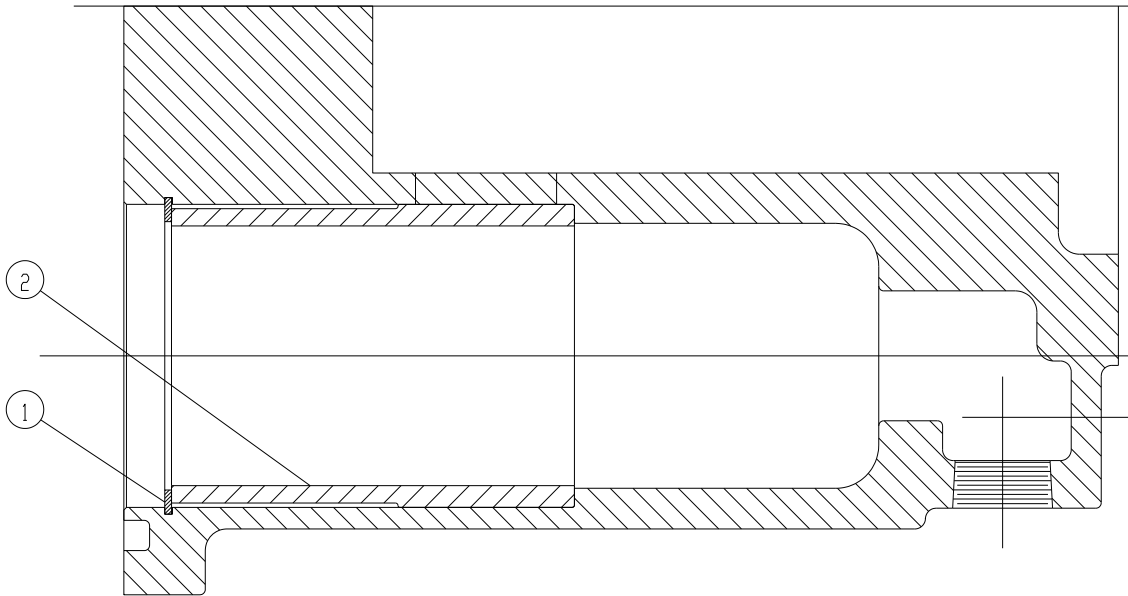


346SSU810-A
(Ref. Drawing)

B/M:
306SSU4013

Ref. No.	Name of Part	Qty.	Part No.
1	LOCK WASHER, BEARING	1	95N19
2	LOCK NUT	1	50Z19
3	SPACER, SHAFT	1	300SSU600

**TURNVALVE SPACER GROUP
(SSUDVAAM01S AIREND ONLY)**

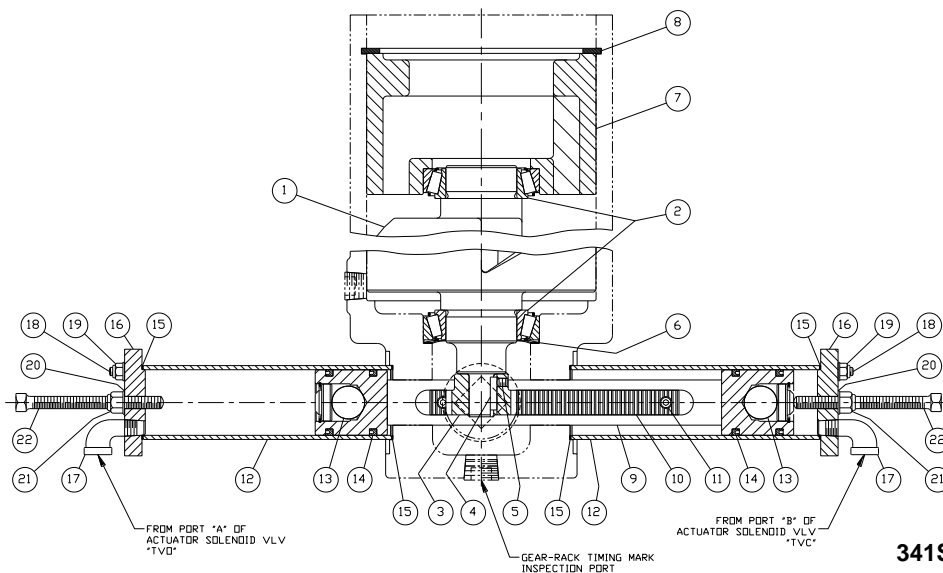


**327SSU810-A
(Ref. Drawing)**

**B/M:
316SSU4049**

Ref. No.	Name of Part	Qty.	Part No.
1	RING, RETAINING	1	100522
2	SPACER.....	1	305SSU144

TURN VALVE – EAU (SSUAVBM01S ONLY)



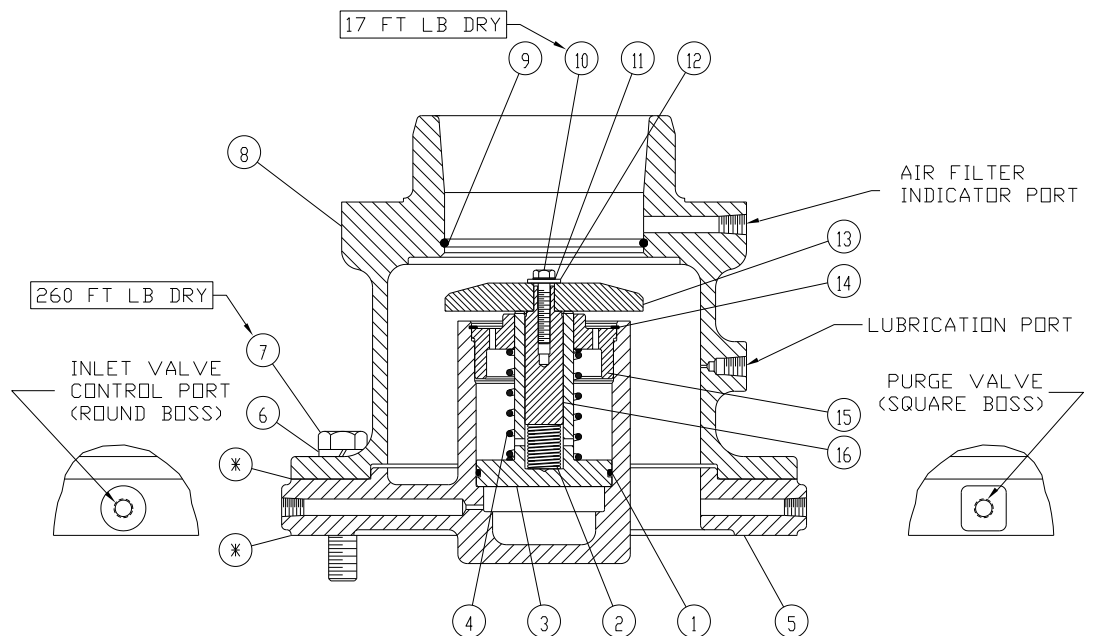
341SSU810-A
(Ref. Drawing)

B/M: 300SSU4052

Ref. No.	Name of Part	Qty.	Part No.
1	VALVE	1	203SSU238
*	2 BEARING, ROLLER	2	12BA51
3	GEAR, AUXILIARY	1	200SSU031
*	4 KEY	1	35C114
5	SCREW	1	76G21P
*	6 SPRING	1	78W50
7	RETAINER	1	207SSU205
8	RING, RETAINING	1	100522
9	SHAFT, CONTROL	1	200SSU081
10	RACK	1	200SSU360
11	SCREW	2	75P11N
12	CYLINDER	2	200SSU082
13	GROUP, PISTON	2	300SSU4056
	PISTON, CONTROL	1	201SSU084
*	BUMPER	1	32E15
*	PLATE, RETAINER	1	300SSU168
*	RING, RETAINING	1	74D49
* 14	PACKING, RING	4	60AM46
* 15	GASKET	4	25BC138N
16	HEAD, CONTROL CYLINDER	2	302SSY083
17	ELBOW	2	64D2G
18	STUD	8	79AL5
19	NUT	8	50AW24
* 20	SEAL	2	60DD801
21	LOCKNUT	2	50AW38
22	SCREW	2	76D49

* Parts included in Periodic Overhaul Kit Part Number 335SSU6013, page 61

INLET VALVE



⊛ DESIGNATES JOINTS REQUIRING GASKET ELIMINATOR
REFER TO RELATED BILLS OF MATERIAL FOR PART NUMBER

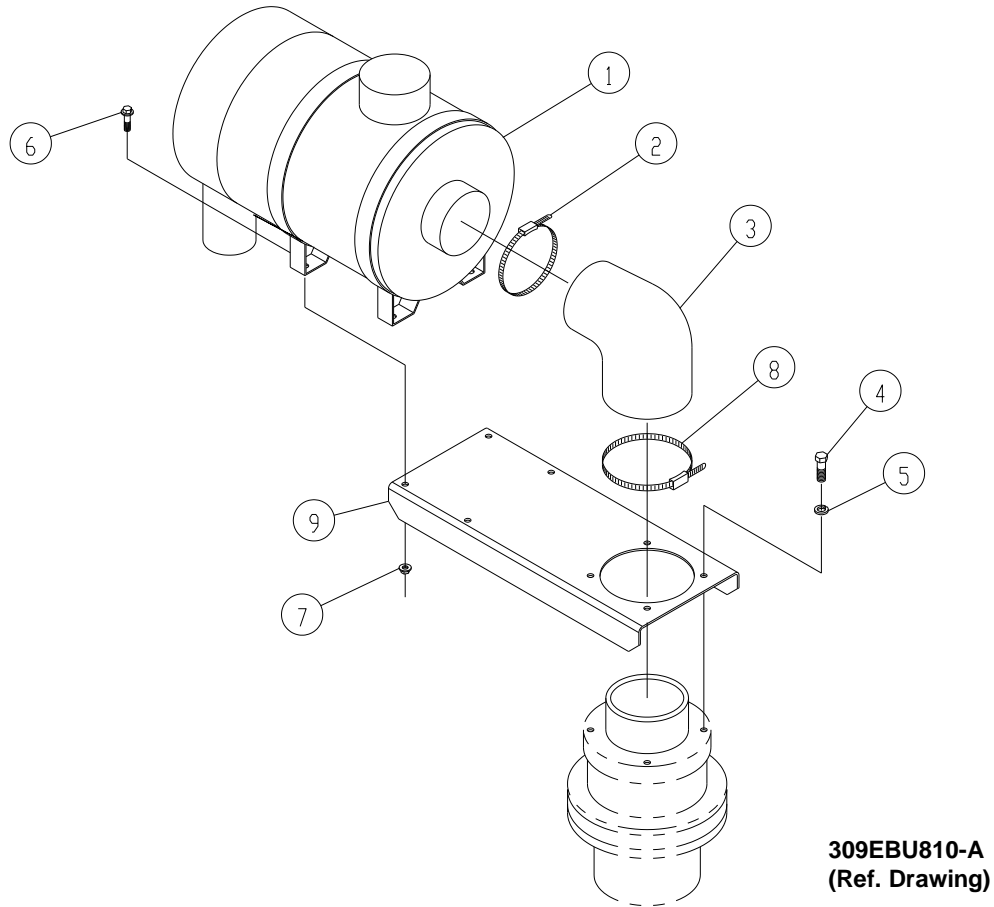
337SSQ810-B
(Ref. Drawing)

B/M:
201SSQ4030

Ref. No.	Name of Part	Qty.	Part No.
** 1	O-RING.....	1	25BC298
** 2	SPRING	1	78W62
3	PISTON, INLET VALVE.....	1	201SSQ043
** 4	SPRING	1	78W61
5	HOUSING, INLET.....	1	204SSQ041
6	LOCK WASHER	8	95B8
7	SCREW	8	655EG120
8	SEAT	1	202SSQ256
** 9	O-RING.....	1	25AM30
10	SCREW	1	75A102
11	LOCK WASHER	1	95H57
12	WASHER	1	95A2
13	VALVE, INLET	1	201SSQ044
**14	RING, RETAINING	1	74D89
15	RETAINER.....	1	200SSQ205
16	GUIDE, VALVE.....	1	201SSQ483

** Parts included in Periodic Maintenance Kit Number 301EAQ6013. Refer to page 60.

AIR FILTER & MOUNTING



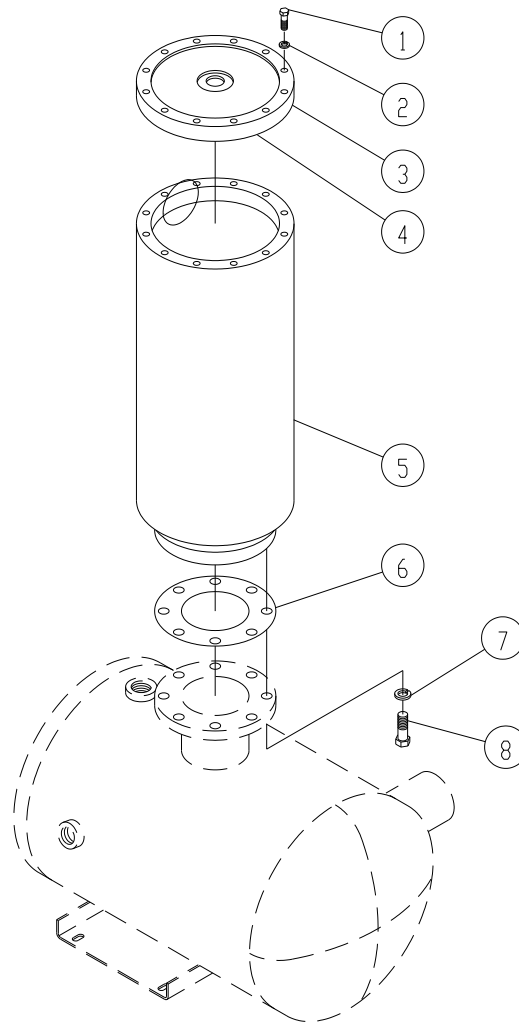
309EBU810-A
(Ref. Drawing)

B/M: 303EBU4017

Ref. No.	Name of Part	Qty.	Part No.
* 1	FILTER, AIR	1	5L354
2	CLAMP	1	29Z16
3	HOSE	1	29Z472
4	SCREW	4	655EE040
5	LOCK WASHER	4	95B5
6	SCREW	4	75LM135
7	NUT	4	50AW5
8	CLAMP	1	2009499
9	BRACKET, FILTER	1	300EBU389

* Air Filter Element Part Number is 2118361.

SEPARATOR HOUSING

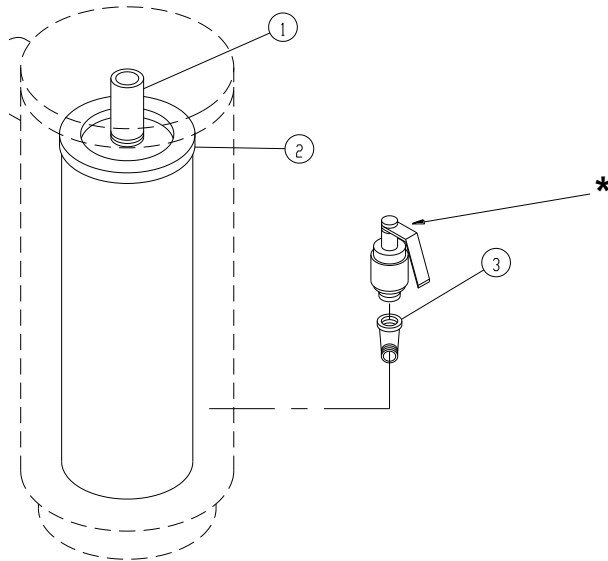


209EDM810-A
(Ref. Drawing)

B/M:
201EDM4018

Ref. No.	Name of Part	Qty.	Part No.
1	SCREW	12	655EE090
2	LOCK WASHER.....	12	95B5
3	COVER.....	1	200EDM225
4	GASKET, ELIMINATOR	1	25BC222
5	HOUSING.....	1	200EDM405
6	GASKET	1	25C2719N
7	LOCK WASHER.....	8	95B8
8	SCREW	8	655EG080

SEPARATOR GROUP



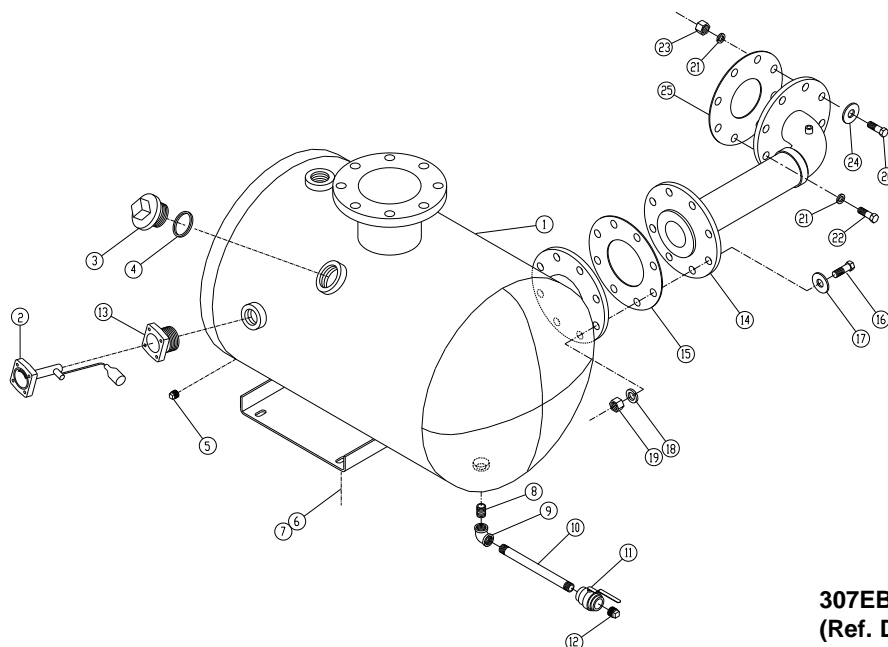
203EDM810-A
(Ref. Drawing)

B/M:
200EDP4013
EAQ76999
EAQ77000

Ref. No.	Name of Part	Qty.	Part No.
1	SPACER.....	1	201EDM392
** 2	OIL SEPARATOR.....	1	VP1040693
3	ELBOW.....	1	64D8G
*	RELIEF VALVE.....		
	100 PSI.....		90AR510
	125 PSI.....		90AR532

** For repair, order Separator Repair Kit Part Number 312EBQ6013. Refer to page 60.

DISCHARGE PIPING

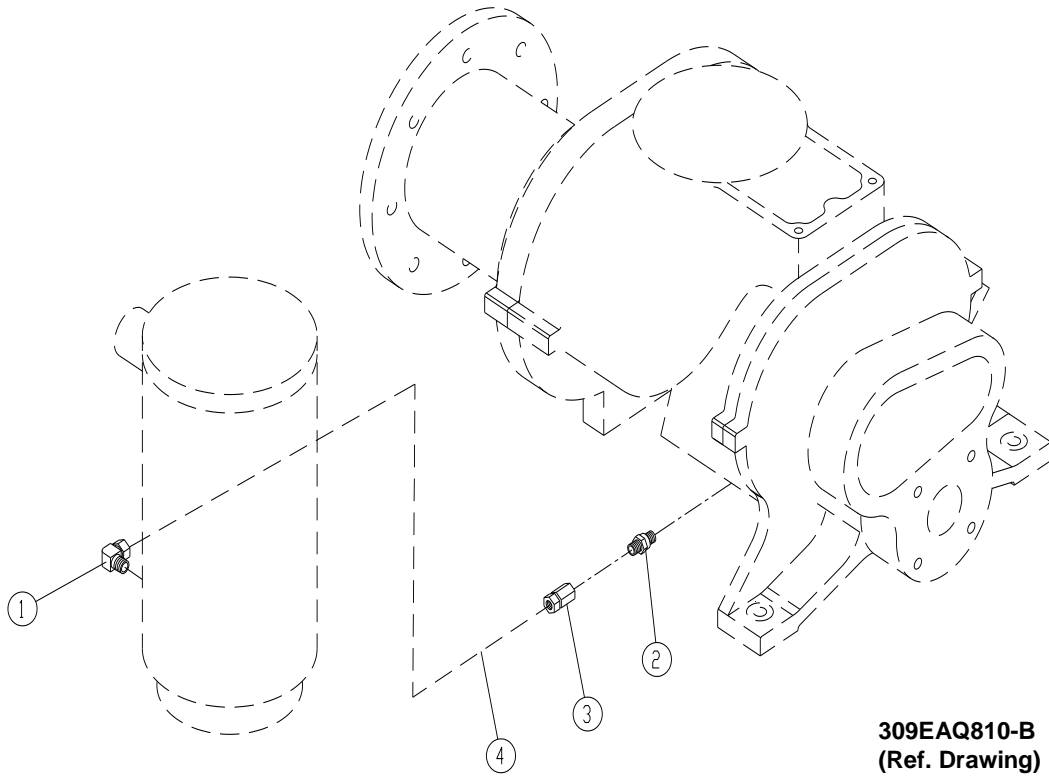


307EBU810-A
(Ref. Drawing)

B/M:
300EBU4018

Ref. No.	Name of Part	Qty.	Part No.
1	RESERVOIR, OIL.....	1	303EAQ037
2	GAUGE	1	300EBM303
3	COVER	1	200SPF156
4	O-RING	1	25BC900
5	PLUG	1	64AA5
6	SCREW.....	4	75LM135
7	NUT.....	4	50AW35
8	NIPPLE	1	63F1G
9	ELBOW	1	64C4G
10	NIPPLE	1	63F15G
11	VALVE, BALL.....	1	90AR360
12	PLUG	1	64AA7
13	ADAPTOR, GAUGE	1	200EDE058
14	MANIFOLD, DISCHARGE	1	301EBU071
15	GASKET.....	1	25C121N
16	SCREW.....	8	655EF120
17	WASHER	8	95A7
18	LOCK WASHER.....	8	95B7
19	NUT.....	8	50B7
20	SCREW.....	2	655EG140
21	LOCK WASHER.....	8	95B8
22	SCREW.....	6	655EG080
23	NUT.....	2	50B8
24	WASHER	2	95A8
25	GASKET.....	1	25C144N

OIL RETURN LINE



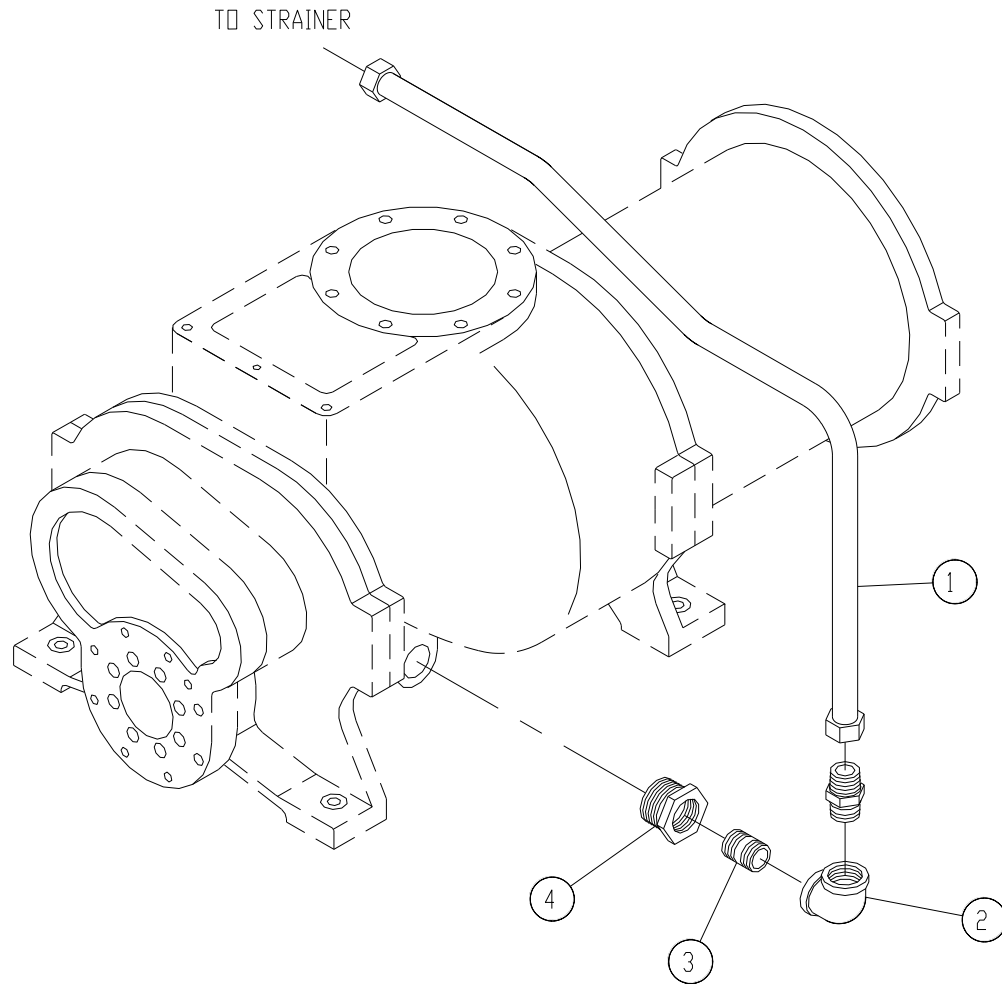
309EAQ810-B
(Ref. Drawing)

B/M:
308EAQ4017

Ref. No.	Name of Part	Qty.	Part No.
1	TUBE FITTING.....	1	86E220
* 2	VALVE, CHECK.....	1	90AR261
3	TUBE FITTING.....	1	86E218
4	TUBE (IN FEET)	3	85K3

* Part included in Pneumatic Control Kit Part Number 302EAQ6013. Refer to page 60.

OIL INLET TUBE

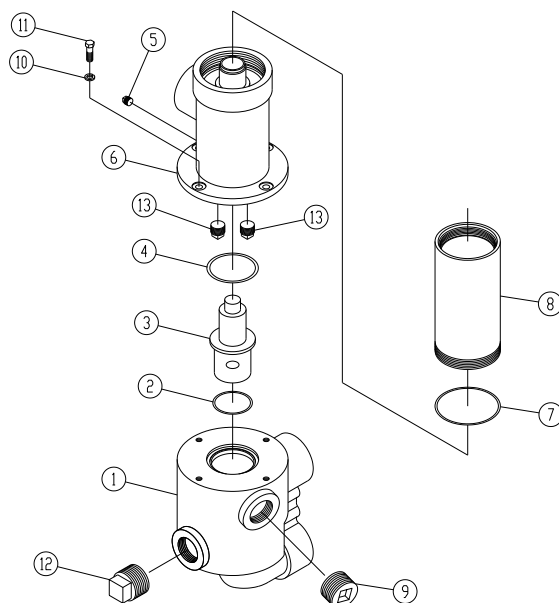


301EBU810-A
(Ref. Drawing)

B/M:
302EBU4017

Ref. No.	Name of Part	Qty.	Part No.
1	TUBE WITH FITTINGS	1	301EBU863
2	ELBOW	1	64C8G
3	NIPPLE	1	63K20G
4	BUSHING, PIPE.....	1	64EB304

FILTER ASSEMBLY WITH 150° ELEMENT, STANDARD



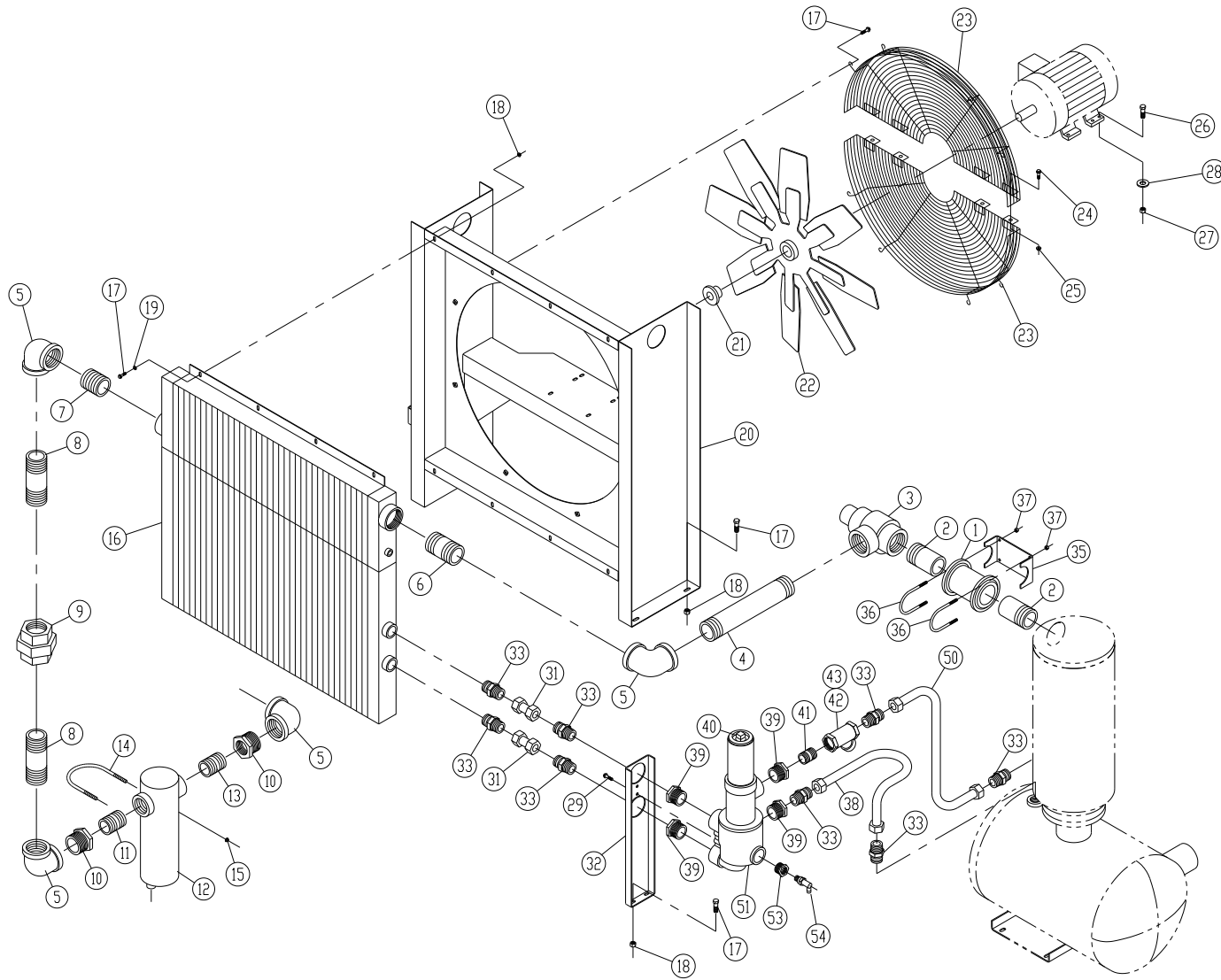
333EAU810-B
(Ref. Drawing)

B/M:
303EAQ2045 (150°F)
304EAQ2045 (180°F)

Ref. No.	Name of Part	Qty.	Part No.
1	MANIFOLD, OIL MIXING VALVE ELEMENT	1	200EAU116
2	O-RING	1	25BC127
3	ELEMENT	1	
	STANDARD, 150° F	1	2117382
	OPTIONAL, 140° F.....	1	2117381
	OPTIONAL, 160° F.....	1	2117383
	OPTIONAL, 180° F.....	1	2117384
4	O-RING	1	25BC175
5	PLUG.....	1	64AC2
6	MANIFOLD, OIL	1	201EAU116
7	O-RING	1	25BC380
* 8	BODY, OIL FILTER	1	200EDM032
9	PLUG.....	1	64B7
10	LOCK WASHER.....	4	95B3
11	SCREW	4	655ED050
12	PLUG.....	1	64AA2
13	PLUG.....	2	2118347

* For Repair of Filter Element, order Part Number 2118342.

COOLER GROUP



308EBU810-B
(Ref. Drawing)

COOLER GROUP

B/M: 304EBU4003; 305EBU4003
308EAQ4013; 309EAQ4013

Ref. No.	Name of Part	Qty.	Part No.	Ref. No.	Name of Part	Qty.	Part No.
* 1	COUPLING, FLEXIBLE	1	64EB803	23	GUARD, FAN	1	200EDM393
2	NIPPLE	2	63AJ48X50G	24	SCREW	4	75LM50
3	VALVE, MINIMUM PRESSURE	1	201EDM527	25	NUT	4	50AW4
4	NIPPLE	1	63P21G	26	SCREW	4	75LM78
5	ELBOW	4	64C10G	27	NUT	4	50AW5
6	NIPPLE	1	63P10G	28	WASHER	4	95W15
7	NIPPLE	1	63P1G	29	SCREW	2	75LM51
8	NIPPLE	2	63P17G	31	TUBE WITH FITTINGS	2	311EAQ863
9	UNION	1	64Z21	32	BRACKET	1	300EAQ142
10	BUSHING, PIPE	2	64E33	33	CONNECTOR, TUBE	8	86H141
11	NIPPLE	1	63M3G	35	BRACKET, PIPE	1	200EAQ108
** 12	SEPARATOR, MOISTURE	1	83C92	36	U-BOLT	2	15U108
13	NIPPLE	1	63M3G	37	NUT	4	50AW5
14	U-BOLT	1	15U75	38	TUBE WITH FITTINGS	1	310EAQ863
15	NUT	2	50AW35	39	BUSHING, PIPE	4	64EB304
16	COOLER, OIL/AIR	1	300EDP201	∇ 40	FILTER, OIL	1	300EAQ369
	COOLER, OIL/AIR, SEACOAST	1	301EDP201	41	NIPPLE	1	63K20G
17	SCREW	22	75LM51	*** 42	STRAINER	1	82E49
18	NUT	14	50AW5	43	PLUG	1	64AA3
19	WASHER	8	95A3	50	TUBE ASSEMBLY	1	See Page 24
20	SUPPORT	1	200EDM165	51	FILTER ASSEMBLY, 150°, See Page 25...	1	303EAQ2045
21	BUSHING, HUB	1	22G2		FILTER ASSEMBLY, 180°, See Page 25...	1	304EAQ2045
22	FAN	1	200EDP701	53	BUSHING, PIPE	1	64E61
				54	OIL SAMPLING VALVE	1	86N345

* For Repair Order (2) 2117161 Gaskets.

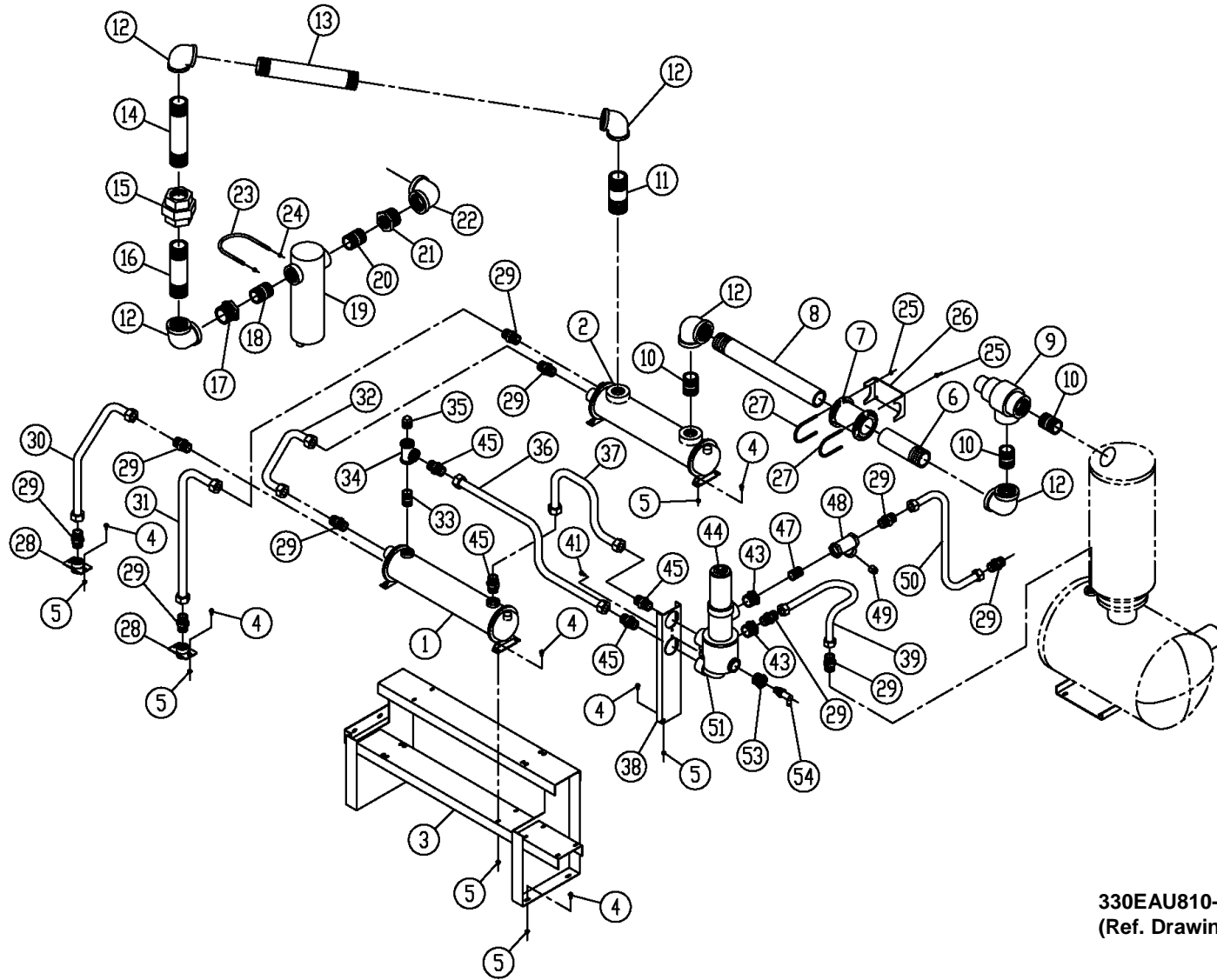
** Repair Parts Kits for Moisture Separator: 2117587, Valve & Seat Assembly; 2117588, Cover Gasket; 2117589, Float & Spindle.

*** Repair Parts for Strainer (100 Mesh Screen): 2118378; Blow-Off Bushing: 2118381.

∇ Repair Element 2118342.

NOTE: For motor part number, see page 49.

WATER COOLED HEAT EXCHANGER, WITH AFTERCOOLER



330EAU810-C
(Ref. Drawing)

WATER COOLED HEAT EXCHANGER, WITH AFTERCOOLER

B/M: 300EUB4003; 301EUB4003
308EAQ4013; 309EAQ4013

Ref. No.	Name of Part	Qty.	Part No.	Ref. No.	Name of Part	Qty.	Part No.
1	HEAT EXCHANGER (Fresh Water) .	1	200EAU349	25	NUT.....	4	50AW5
	HEAT EXCHANGER (Salt Water)	1	203EAU349	26	BRACKET, PIPE.....	1	200EAQ108
2	AFTERCOOLER (Fresh Water).....	1	204EAU292	27	U-BOLT.....	2	15U108
	AFTERCOOLER (Salt Water).....	1	206EAU292	28	MANIFOLD, WATER	2	200EDM072
3	SUPPORT	1	300EAQ165	29	CONNECTOR, TUBE	10	86H141
4	SCREW	18	75LM51	30	TUBE WITH FITTINGS.....	1	323EAU863
5	NUT.....	18	50AW5	31	TUBE WITH FITTINGS.....	1	321EAU863
6	NIPPLE.....	1	63AJ48X50G	32	TUBE WITH FITTINGS.....	1	324EAU863
*	7 COUPLING, FLEXIBLE.....	1	64EB803	33	NIPPLE	1	63L24G
8	NIPPLE.....	1	63AJ48X234G	34	TEE	1	64G1G
9	VALVE, MINIMUM PRESSURE	1	201EDM527	+ 35	PLUG	1	64B7
10	NIPPLE.....	3	63P11G	36	TUBE WITH FITTINGS.....	1	325EAU863
11	NIPPLE.....	1	63P13G	37	TUBE WITH FITTINGS.....	1	326EAU863
12	ELBOW	5	64C10G	38	BRACKET (FORMED)	1	300EAQ142
13	NIPPLE.....	1	63N48X200G	39	TUBE WITH FITTINGS.....	1	310EAQ863
14	NIPPLE.....	1	63P17G	41	SCREW.....	2	75LM51
15	UNION.....	1	64Z21	43	BUSHING, PIPE	2	64EB304
16	NIPPLE.....	1	63P17G	▽ 44	FILTER, OIL	1	300EAQ369
17	BUSHING, PIPE	1	64E33	45	CONNECTOR	4	86H142
18	NIPPLE.....	1	63M3G	47	NIPPLE	1	63K20G
**	19 SEPARATOR, MOISTURE	1	TEN000742	*** 48	STRAINER	1	82E49
20	NIPPLE.....	1	63M3G	49	PLUG	1	64AA3
21	BUSHING, PIPE	1	64E33	50	TUBE ASSEMBLY.....	1	See Page 24
22	ELBOW	1	64C10G	51	FILTER ASSEMBLY, 150°, see page 25..	1	303EAQ2045
23	U-BOLT	1	15U75		FILTER ASSEMBLY, 180°, see page 25..	1	304EAQ2045
24	NUT.....	2	50AW35	53	BUSHING, PIPE	1	64E61
				54	OIL SAMPLING VALVE	1	86N345

* For Repair Order (2) 2117161 Gaskets.

** Repair Parts Kits for Moisture Separator: 2117587, Valve & Seat Assembly; 2117588, Cover Gasket; 2117589, Float & Spindle.

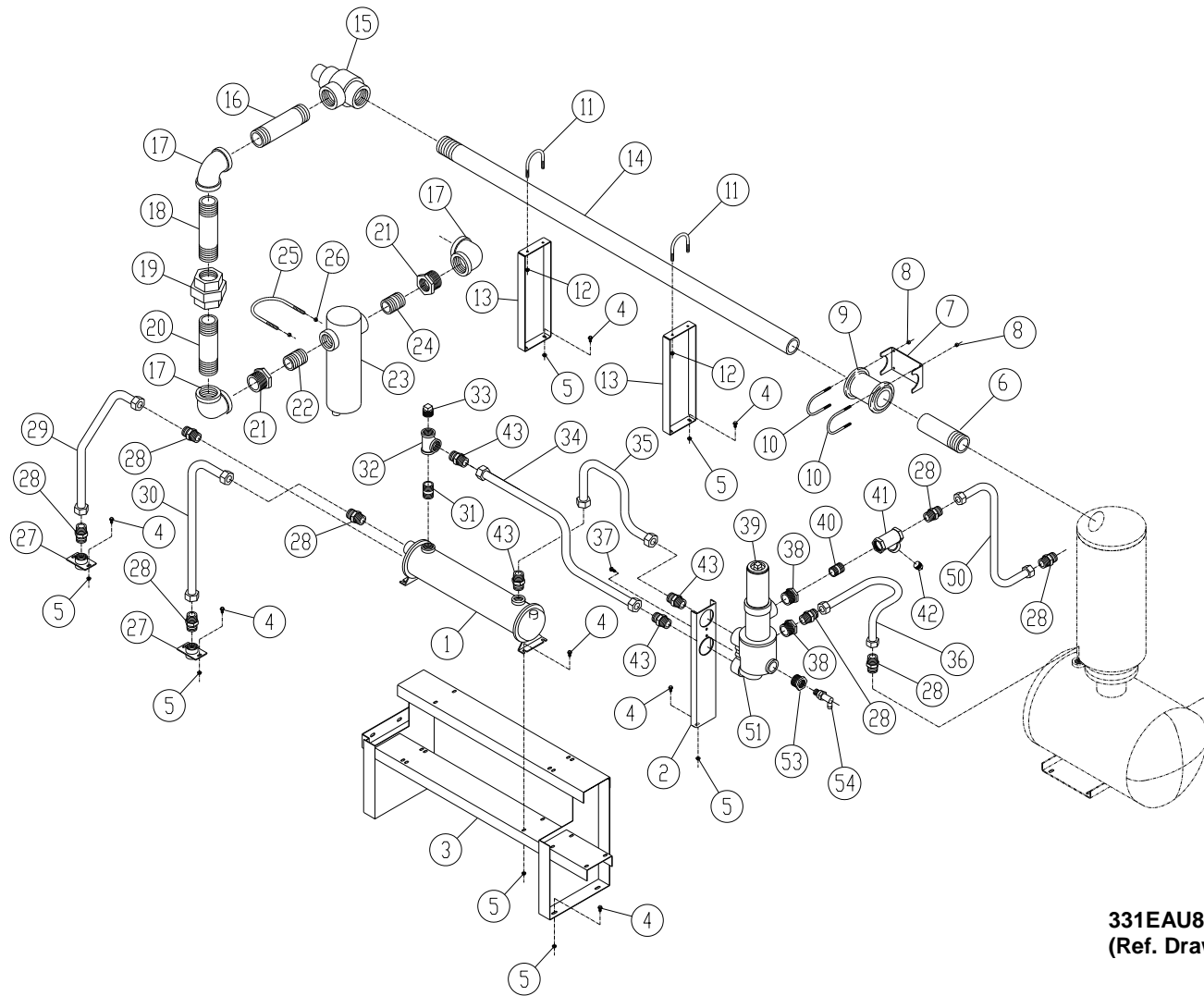
*** Repair Parts for Strainer (100 Mesh Screen): 2118378; Blow-Off Bushing: 2118381.

+ Remove this plug when Optional Water Temperature Regulator is used. This is the temperature probe location.

▽ Repair Element 2118342.

Note: For Repair Part Numbers for Heat Exchangers and Aftercoolers, see page 32.

WATER COOLED HEAT EXCHANGER, WITHOUT AFTERCOOLER



331EAU810-B
(Ref. Drawing)

WATER COOLED HEAT EXCHANGER, WITHOUT AFTERCOOLER

B/M: 302EBU4003; 303EBU4003
308EAQ4013; 309EAQ4013

Ref. No.	Name of Part	Qty.	Part No.	Ref. No.	Name of Part	Qty.	Part No.
1	HEAT EXCHANGER (Fresh Water).....	1	200EAU349	24	NIPPLE.....	1	63M3G
	HEAT EXCHANGER (Salt Water).....	1	203EAU349	25	U-BOLT.....	1	15U75
2	BRACKET.....	1	300EAQ142	26	NUT.....	2	50AW35
3	SUPPORT.....	1	300EAQ165	27	MANIFOLD, WATER.....	2	200EDM072
4	SCREW.....	18	75LM51	28	CONNECTOR, TUBE.....	8	86H141
5	NUT.....	18	50AW5	29	TUBE WITH FITTINGS.....	1	323EAU863
6	NIPPLE.....	1	63AJ48X50G	30	TUBE WITH FITTINGS.....	1	322EAU863
7	BRACKET.....	1	200EAQ108	31	NIPPLE.....	1	63L24G
8	NUT.....	4	50AW5	32	TEE.....	1	64G1G
* 9	COUPLING, FLEXIBLE.....	1	64EB803	+ 33	PLUG.....	1	64B7
10	U-BOLT.....	2	15U108	34	TUBE WITH FITTINGS.....	1	325EAU863
11	U-BOLT.....	2	15U87	35	TUBE WITH FITTINGS.....	1	326EAU863
12	NUT.....	4	50AW35	36	TUBE WITH FITTINGS.....	1	310EAQ863
13	BRACKET.....	2	200EDM108	37	SCREW.....	2	75LM51
14	NIPPLE.....	1	63AJ48X690G	38	BUSHING, PIPE.....	4	64EB304
15	VALVE, MINIMUM PRESSURE.....	1	201EDM527	∇ 39	FILTER, OIL.....	1	300EAQ369
16	NIPPLE.....	1	63P5G	40	NIPPLE.....	1	63K20G
17	ELBOW.....	3	64C10G	*** 41	STRAINER.....	1	82E49
18	NIPPLE.....	1	63P25G	42	PLUG.....	1	64AA3
19	UNION.....	1	64Z21	43	CONNECTOR.....	4	86H142
20	NIPPLE.....	1	63P20G	50	TUBE ASSEMBLY.....	1	See Page 24
21	BUSHING, PIPE.....	2	64E33	51	FILTER ASSEMBLY, 150°, see page 25.....	1	303EAQ2045
22	NIPPLE.....	1	63M2G		FILTER ASSEMBLY, 180°, see page 25.....	1	304EAQ2045
** 23	SEPARATOR, MOISTURE.....	1	TEN000742	53	BUSHING, PIPE.....	1	64E61
				54	OIL SAMPLING VALVE.....	1	86N345

* For Repair Order (2) 2117161 Gaskets.

** Repair Parts Kits for Moisture Separator: 2117587, Valve & Seat Assembly; 2117588, Cover Gasket; 2117589, Float & Spindle.

*** Repair Parts for Strainer (100 Mesh Screen): 2118378; Blow-Off Bushing: 2118381.

+ NOTE: Remove this plug when Optional Water Temperature Regulator is used. This is the temperature probe location.

∇ Repair Element 2118342.

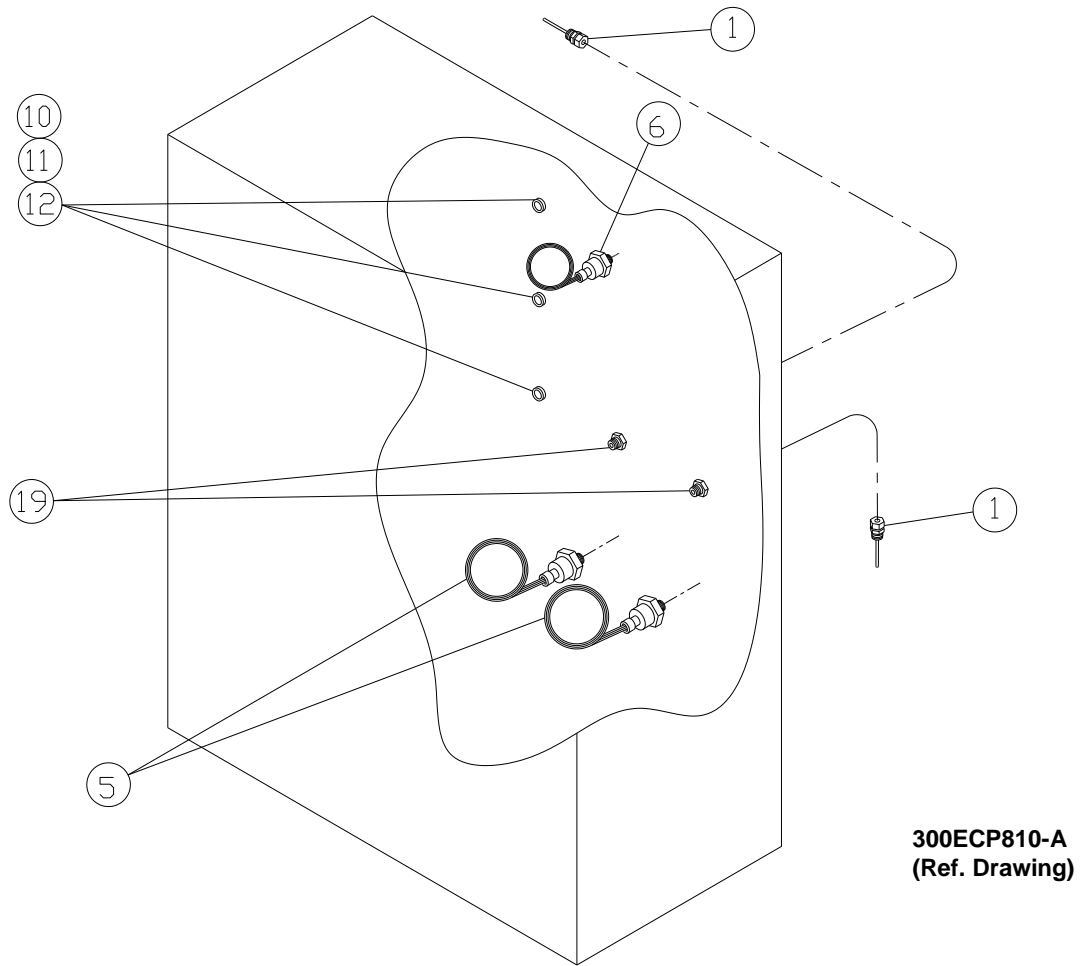
Note: For Repair Part Numbers for Heat Exchangers and Aftercoolers, see page 32.

REPAIR PARTS FOR HEAT EXCHANGER AND AFTERCOOLER

HEAT EXCHANGERS		
Name of Part	Qty	Part No.
200EAU349 (Fresh Water)		
GASKET, RETURN	1	2117105
GASKET, IN/OUT	1	2117104
BONNET, RETURN	1	2117103
BONNET, IN/OUT	1	2117102
203EAU349 (Salt Water)		
BONNET, IN/OUT	1	2117757
BONNET, RETURN	1	2117758
GASKET, IN/OUT	1	2117104
GASKET, RETURN	1	2117105

AFTERCOOLERS		
Name of Part	Qty	Part No.
204EAU292 (Fresh Water)		
GASKET, RETURN	1	2117105
GASKET, IN/OUT	1	2117104
BONNET, RETURN	1	2117103
BONNET, IN/OUT	1	2117102
206EAU292 (Salt Water)		
BONNET, IN/OUT	1	2117757
BONNET, RETURN	1	2117758
GASKET, IN/OUT	1	2117104
GASKET, RETURN	1	2117105

MISCELLANEOUS ELECTRICAL PARTS

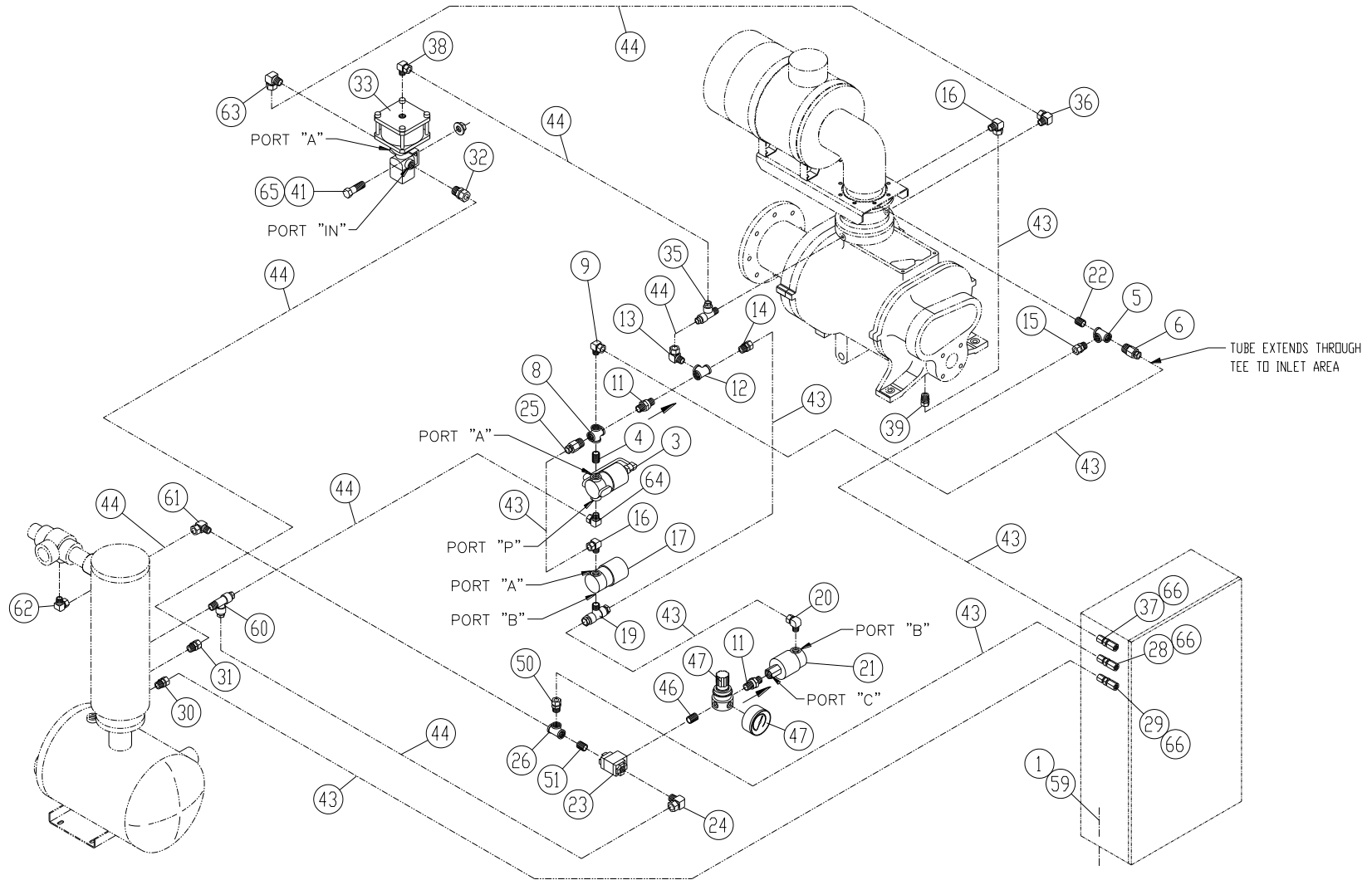


B/M:
301EBP4007

Ref. No.	Name of Part	Qty.	Part No.
* 1	PROBE, ELECTRICAL	2	21D264
* 5	TRANSDUCER, PRESSURE	2	88H365
* 6	SWITCH, VACUUM	1	88H195
10	NIPPLE	3	24CA4641
11	O-RING.....	3	24A383
12	LOCKNUT, CONDUIT.....	3	24A77
19	FITTING, ELECTRICAL	2	24CA2865

* Parts included in Electrical Control Kit Part Number 306EAQ6013. Refer to page 60.

CONTROL SCHEMATIC



306EBU810-B
(Ref. Drawing)

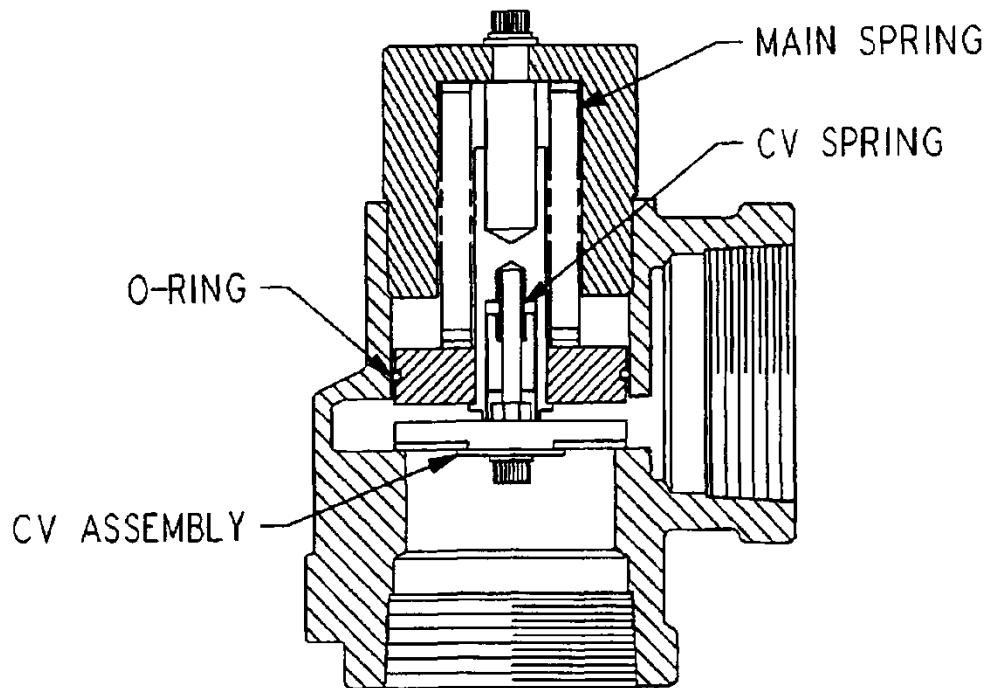
CONTROL SCHEMATIC

B/M:
302EBU4002
302EBQ4052
303EBQ4052

Ref. No.	Name of Part	Qty.	Part No.	Ref. No.	Name of Part	Qty.	Part No.
1	SCREW	4	75LM51	38	TUBE FITTING	1	TEN001714
5	TEE	1	64G3G	39	TUBE FITTING	1	TEN001699
6	TUBE FITTING	1	TEN001742	41	NUT	2	50AW3
15	TUBE FITTING	1	TEN001699	43	TUBE (IN FEET)	28	85K3
16	TUBE FITTING	2	TEN001712	44	TUBE (IN FEET)	24	85K5
+ 17	VALVE, SOLENOID	1	91B245	59	NUT	4	50AW5
19	TUBE FITTING	1	TEN001730	60	TEE.....	1	TEN001728
22	NIPPLE	1	63D1G	61	TUBE FITTING	1	TEN001714
28	CONNECTOR, TUBE	1	TEN001734	62	TUBE FITTING	1	TEN001714
29	CONNECTOR, TUBE	1	TEN001734	63	TUBE FITTING	1	TEN001714
30	TUBE FITTING	1	TEN001699	65	SCREW	2	75LM48
31	TUBE FITTING	1	TEN001701	66	O-RING.....	3	165011
32	TUBE FITTING	1	TEN001701	67	WASHER.....	4	95A3Z
**++33	CONTROL VALVE.....	1	90AR1082				
35	TUBE FITTING	1	TEN001728				
36	TUBE FITTING	1	TEN001714				
37	CONNECTOR, TUBE	1	86N287				

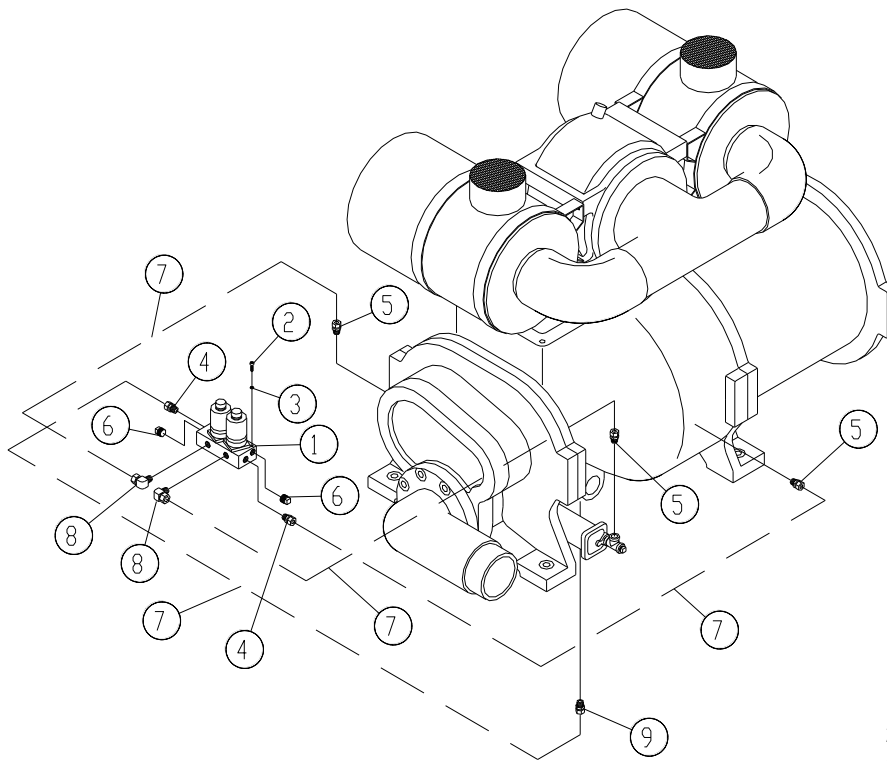
- * For Repair Kit (includes Springs, Seals, Piston Assembly, Plunger Assembly, Nut & O-Ring, Part Number 2116077.
- ** For Repair of U-Cup (Piston Seal), order Part Number 2117904; For O-Ring (Top Plate), order Part Number 2117905.
- + Parts included in Electrical Control Kit, Part Number 306EBQ6013. Refer to page 60.
- ++ Parts included in Pneumatic Control Kit, Part Number 302EAQ6013. Refer to page 60.
- ▽ For Replacement Gauge, order Part Number 2118767.

MINIMUM PRESSURE/CHECK VALVE



Name of Part	Qty.	Part No.
MINIMUM PRESSURE VALVE ASSEMBLY	1	201EDM527
REPAIR KIT:	1	2116855
CHECK VALVE ASSEMBLY	1	
MAIN SPRING.....	1	
CHECK VALVE SPRING	1	
O-RING	1	

TURN VALVE ACTUATOR, EAU ONLY



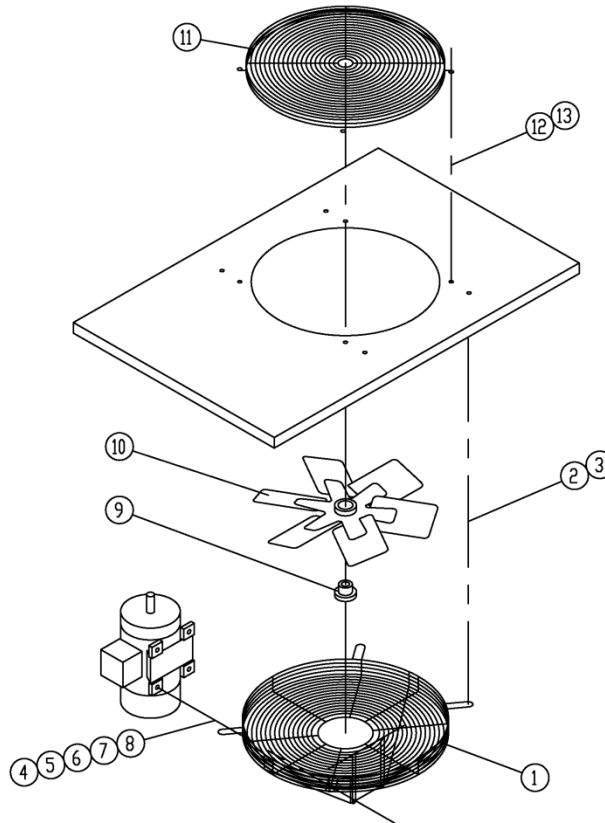
255EAU810-B
(Ref. Drawing)

B/M:
300EAU4052

Ref. No.	Name of Part	Qty.	Part No.
1 *	VALVE, SOLENOID.....	1	VP1021223
2	SCREW	2	75P26
3	LOCK WASHER	2	95B1
4	TUBE FITTING	2	86E211
5	TUBE FITTING	3	86E210
6	PLUG.....	2	64AC3
7	TUBE, BULK (IN FEET).....	20	85K3
8	TUBE FITTING	2	86E220
9	TUBE FITTING	1	86E211

*For O-Ring Repair Kit, order Part Number 307EAQ6013. Refer to Page 60.

ENCLOSURE VENT FAN ASSEMBLY WATER COOLED ONLY



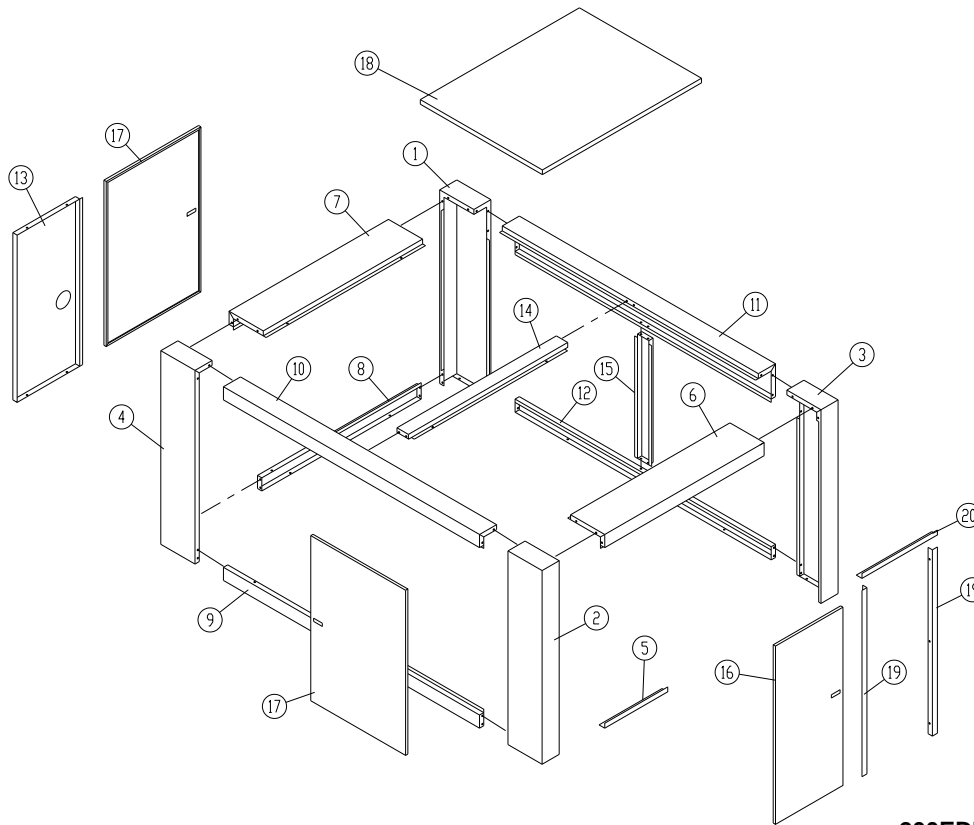
262EAU810-A
(Ref. Drawing)

B/M: 300EBQ4017

Ref. No.	Name of Part	Qty.	Part No.
1	GUARD, FAN.....	1	202ECM393
2	SCREW	4	75K48
3	WASHER.....	4	95A5
4	SCREW	4	75A35
5	RETAINER	4	2014731
6	WASHER.....	4	95A2
7	LOCK WASHER	4	95B2
8	NUT	4	50B2
9	BUSHING, SHEAVE	1	22G27
10	FAN	1	202ECM701
11	GUARD, FAN.....	1	200ECM393
12	SCREW	4	75LM51
13	NUT	4	50AW5

For Motor Part Number refer to Page 49.

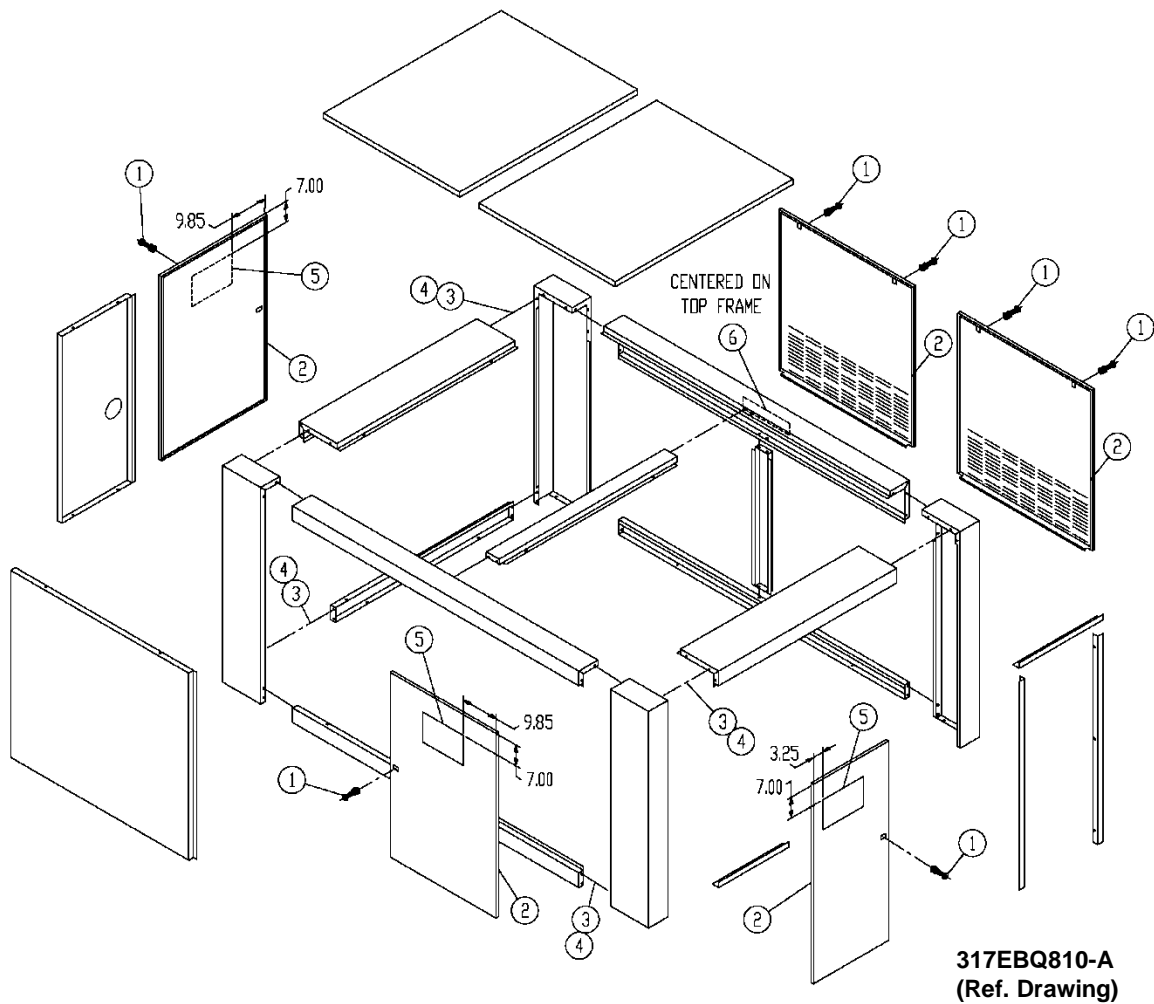
ENCLOSURE STANDARD



200EDM810-B
(Ref. Drawing)

Ref. No.	Name of Part	Qty.	B/M: 300EBQ4023	B/M: 317EBU4023
			ODP Part No.	TEFC Part No.
1	POST	1	CC1046854	CC1046971
2	POST	1	CC1046856	CC1046856
3	POST	1	CC1046857	CC1046857
4	POST	1	CC1046858	CC1046972
5	FRAME.....	1	200EDM314	200EDM314
6	FRAME.....	1	201EDM314	201EDM314
7	FRAME.....	1	202EDM314	CC1046973
8	FRAME.....	1	203EDM314	CC1046974
9	FRAME.....	1	204EDM314	204EDM314
10	FRAME.....	1	205EDM314	205EDM314
11	FRAME.....	1	206EDM314	206EDM314
12	FRAME.....	1	207EDM314	207EDM314
13	BRACE.....	1	CC1046862	CC1046862
14	BRACE.....	1	201EDM326	201EDM326
15	BRACE.....	1	202EDM326	202EDM326
16	DOOR, CANOPY	1	CC1046859	CC1046859
17	DOOR, CANOPY	2	CC1046860	CC1046860
18	PANEL	1	203EDM216	203EDM216
19	BRACKET	2	201EDM142	201EDM142
20	BRACKET	1	202EDM142	202EDM142

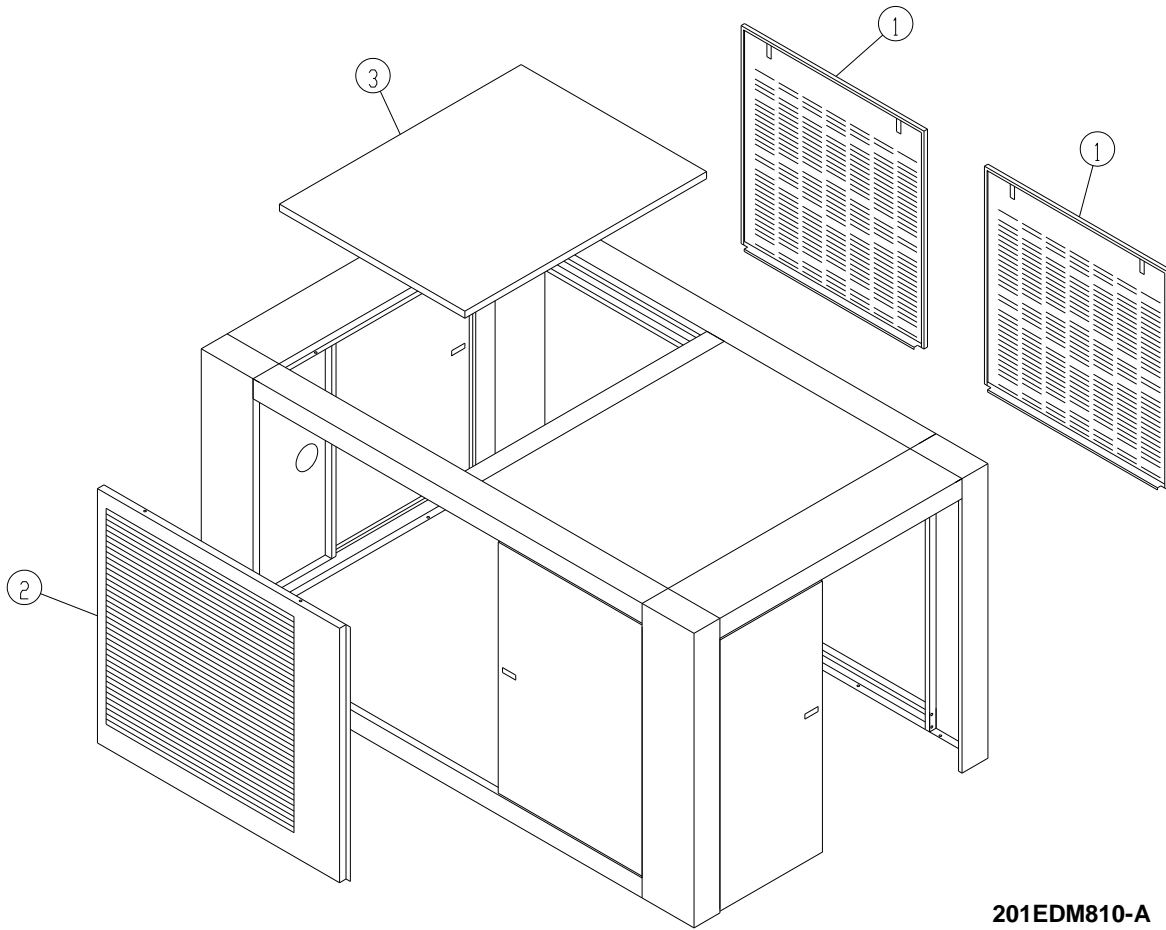
ENCLOSURE, HARDWARE STANDARD & QUIET



Ref. No.	Name of Part	Qty.	Part No.
1	LATCH.....	7	31D68
2	SEAL (IN FEET)	75	32E12
3	SCREW	90	75LM51
4	NUT.....	82	50AW5
5	DECAL	3	VP1042952
6	DECAL, "GARDNER DENVER"	1	VP1044830
7	KEY (NOT SHOWN).....	2	VP1049035

B/M: 307EBQ4017
ODP & TEFC

ENCLOSURE, AIR COOLED PANELS STANDARD

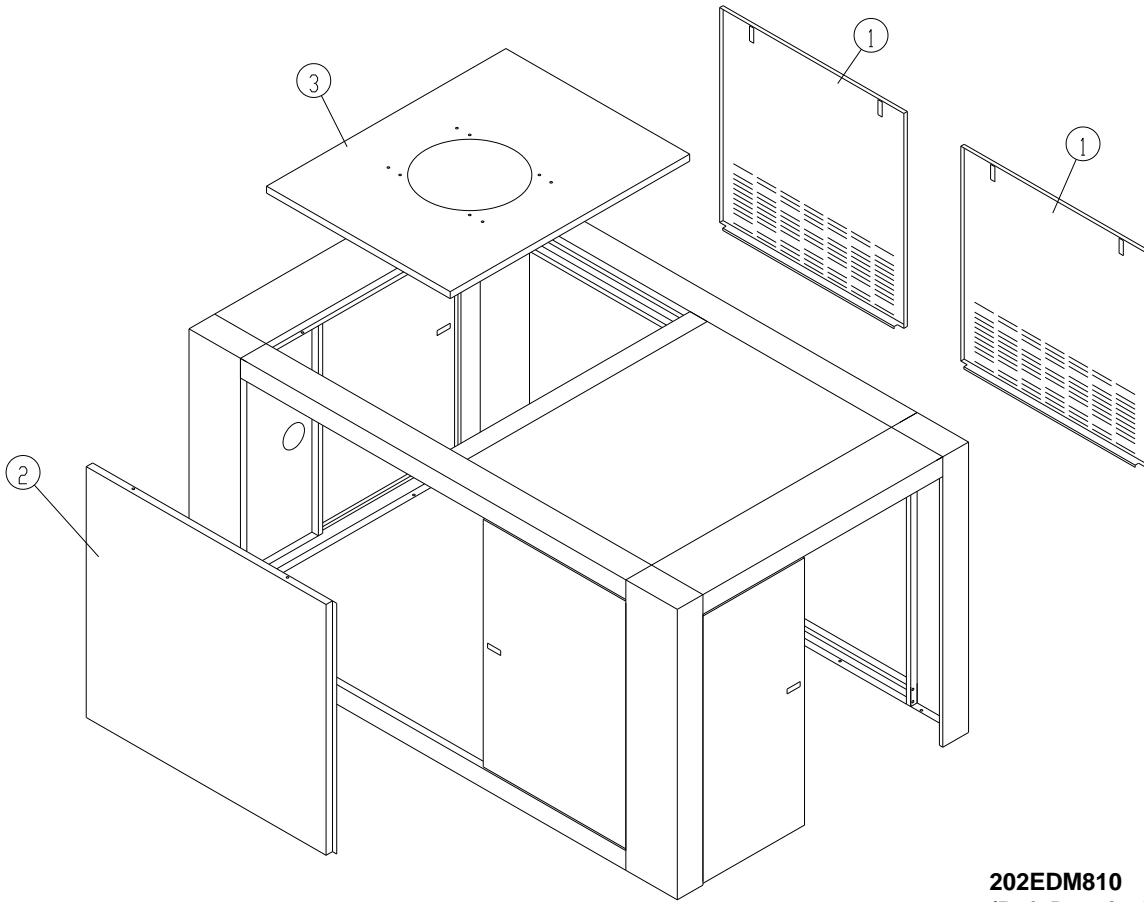


201EDM810-A
(Ref. Drawing)

Ref. No.	Name of Part	Qty.	Part No.
1	PANEL.....	2	CC1018159
2	PANEL.....	1	202EDM216
3	PANEL.....	1	203EDM216

B/M: 201EDM4023
ODP & TEFC

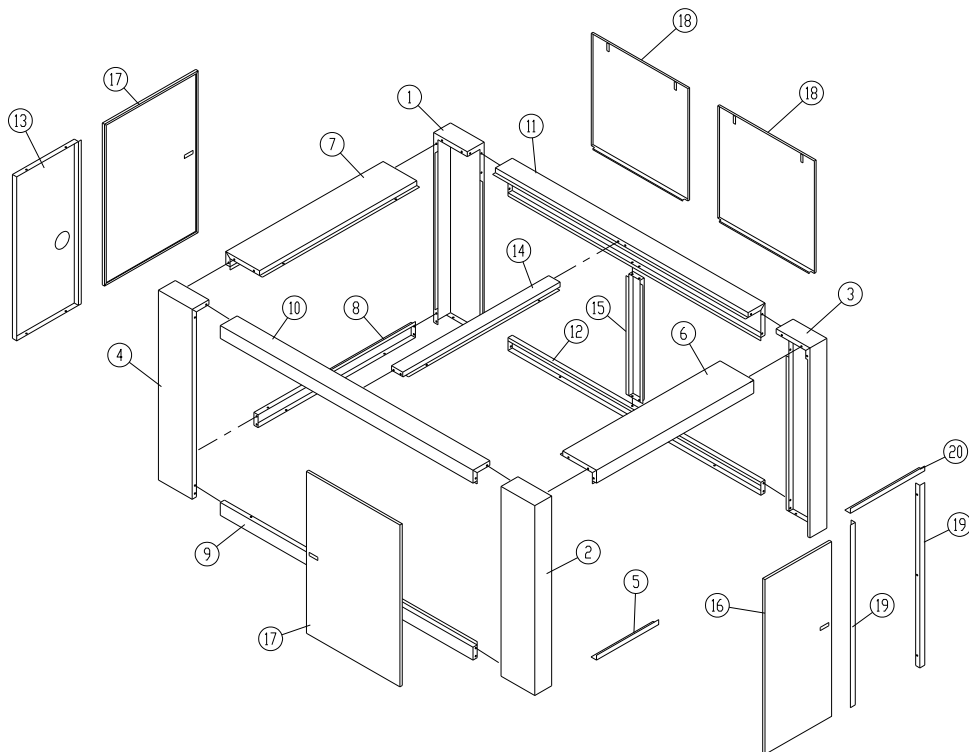
ENCLOSURE, WATER COOLED PANELS STANDARD



202EDM810
(Ref. Drawing)

Ref. No.	Name of Part	Qty.	B/M: 202EDM4023 ODP & TEFC Part No.
1	PANEL.....	2	CC1018160
2	PANEL.....	1	204EDM216
3	PANEL.....	1	205EDM216

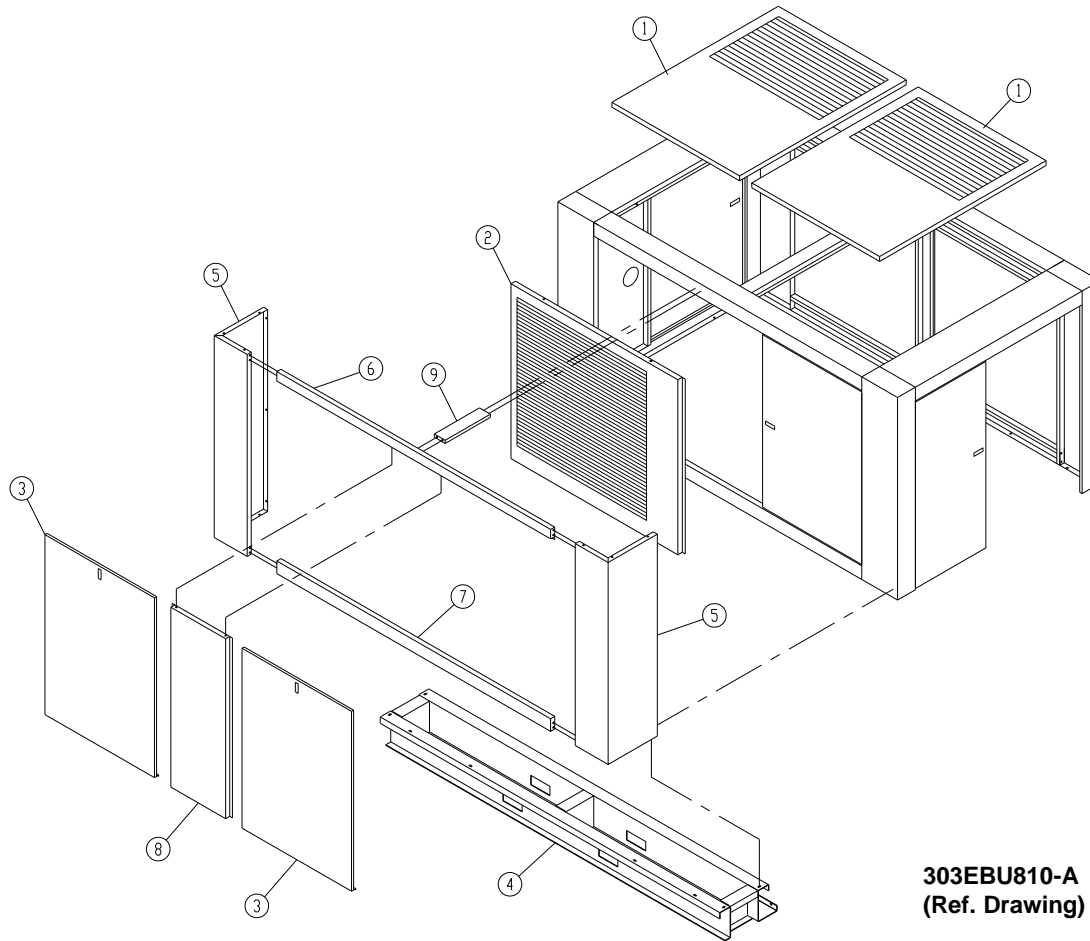
ENCLOSURE, BASIC QUIET



305EBU810-A
(Ref. Drawing)

Ref. No.	Name of Part	Qty.	B/M: 301EBQ4023	B/M: 318EBU4023
			ODP Part No.	TEFC Part No.
1	POST.....	1	CC1046854	CC1046971
2	POST.....	1	CC1046856	CC1046856
3	POST.....	1	CC1046857	CC1046857
4	POST.....	1	CC1046858	CC1046972
5	FRAME.....	1	200EDM314	200EDM314
6	FRAME.....	1	201EDM314	201EDM314
7	FRAME.....	1	202EDM314	CC1046973
8	FRAME.....	1	203EDM314	CC1046974
9	FRAME.....	1	204EDM314	204EDM314
10	FRAME.....	1	205EDM314	205EDM314
11	FRAME.....	1	206EDM314	206EDM314
12	FRAME.....	1	207EDM314	207EDM314
13	BRACE (MOTOR SIDE).....	1	CC1046864	CC1046864
14	BRACE.....	1	201EDM326	201EDM326
15	BRACE.....	1	202EDM326	202EDM326
16	DOOR (CONTROL SIDE).....	1	CC1046866	CC1046866
17	DOOR.....	2	CC1046865	CC1046865
18	PANEL (QUIET).....	2	CC1018163	CC1018163
19	BRACKET.....	2	201EDM142	201EDM142
20	BRACKET.....	1	202EDM142	202EDM142

AIR COOLED BAFFLE QUIET

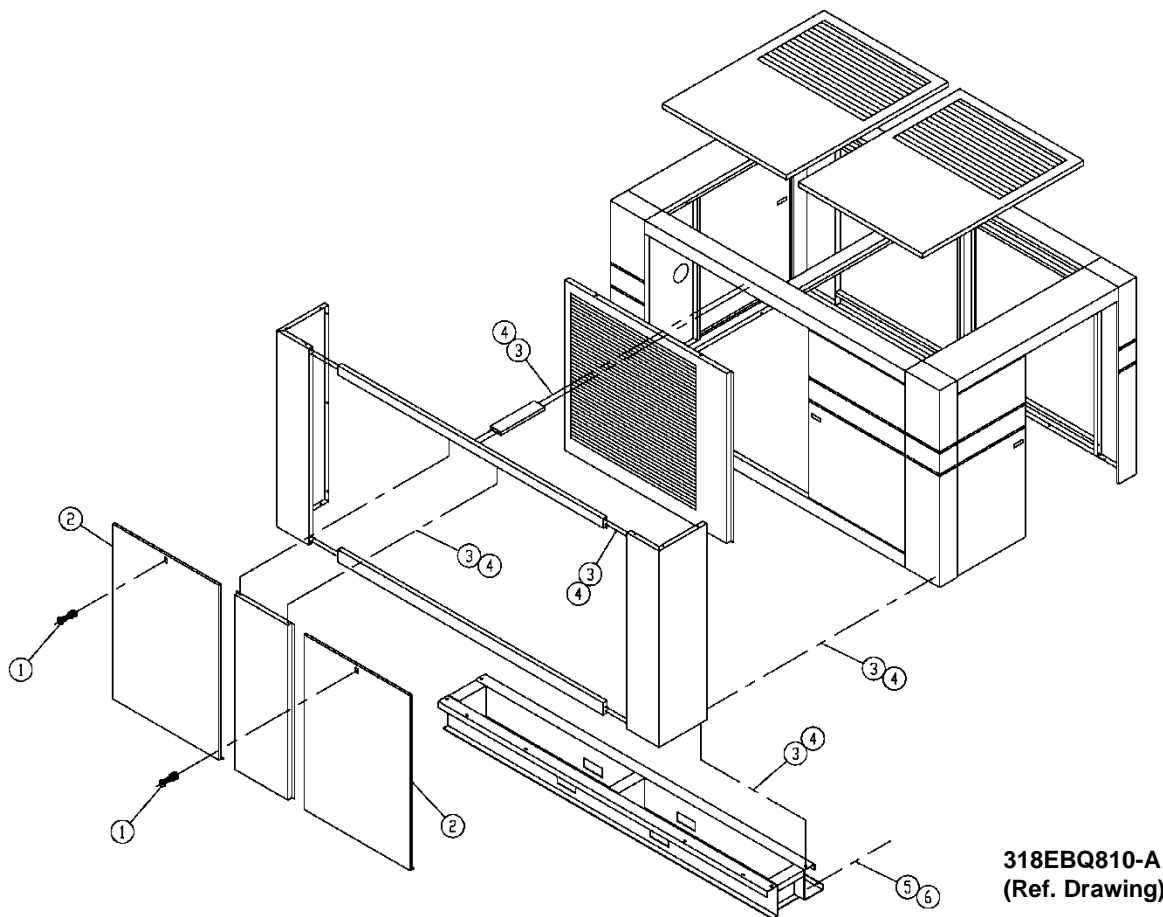


303EBU810-A
(Ref. Drawing)

B/M: 302EBQ4023
ODP & TEFC

Ref. No.	Name of Part	Qty.	Part No.
1	PANEL (TOP AIR INLET)	2	300EBU216
2	PANEL	1	202EDM216
3	PANEL	2	CC1018164
4	BASE	1	300EBU285
5	POST	2	CC1046863
6	FRAME	1	300EBU314
7	FRAME (BAFFLE BOTTOM)	1	301EBU314
8	BRACE (BAFFLE SIDE)	1	301EBU326
9	BRACE	1	205EAU326

AIR COOLED BAFFLE HARDWARE QUIET

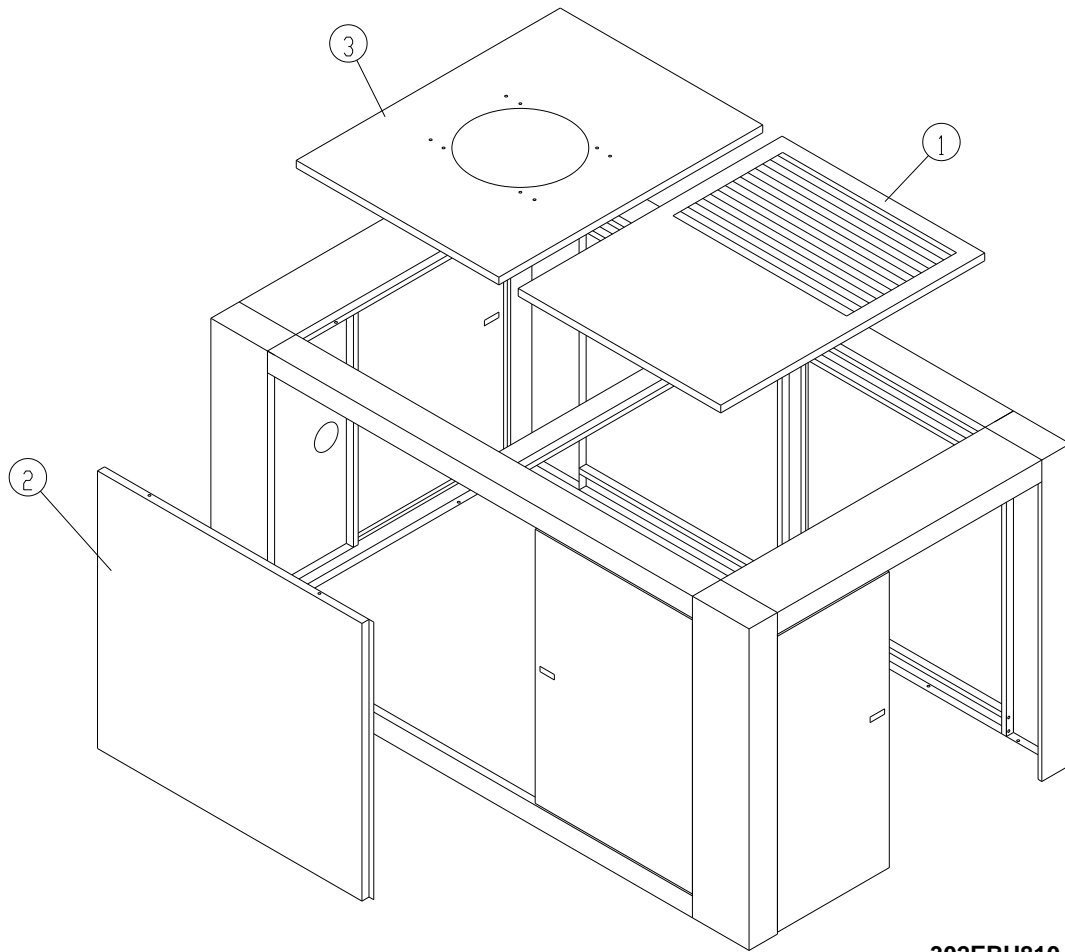


318EBQ810-A
(Ref. Drawing)

Ref. No.	Name of Part	Qty.	Part No.
1	LATCH.....	2	31D68
2	SEAL (IN FEET)	25	32E12
3	SCREW	30	75LM51
4	NUT	30	50AW5
5	SCREW	4	75LM135
6	NUT	4	50AW35

B/M: 308EBQ4017
ODP & TEFC

ENCLOSURE, WATER COOLED QUIET

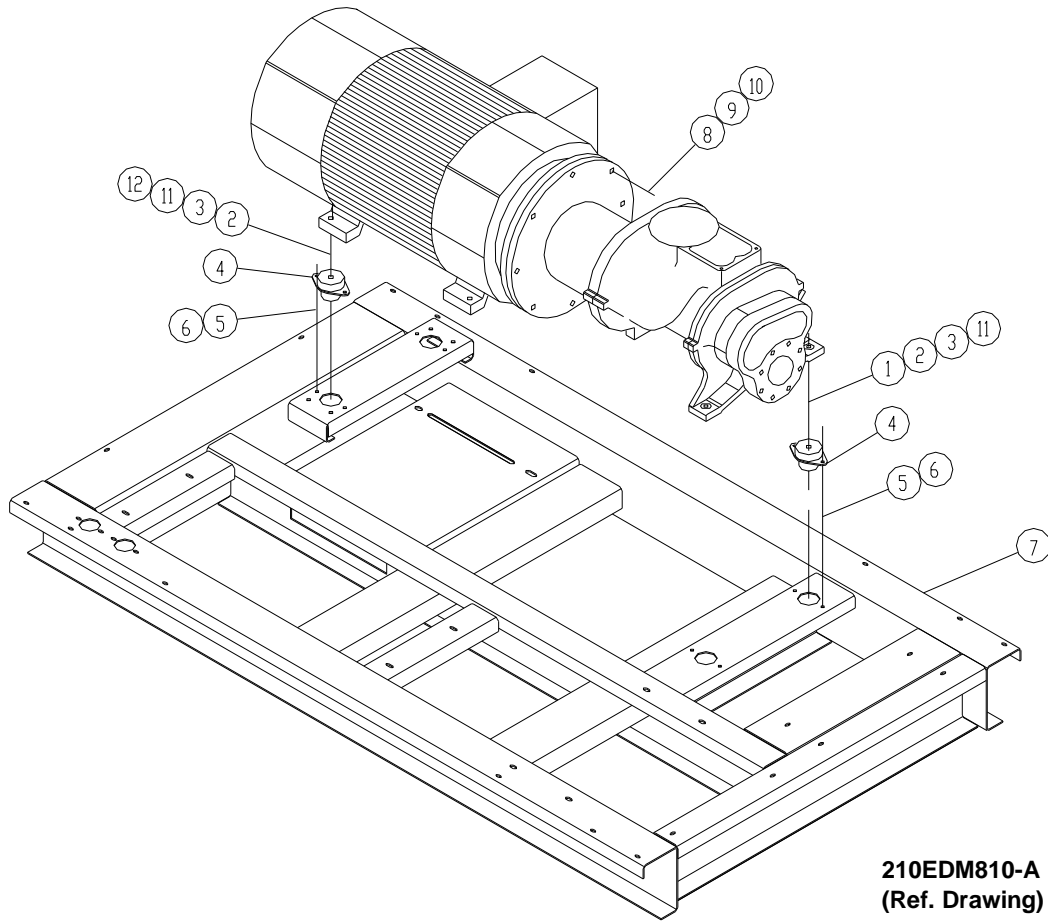


302EBU810-A
(Ref. Drawing)

B/M: 300EBU4023
ODP & TEFC

Ref. No.	Name of Part	Qty.	Part No.
1	PANEL (TOP AIR INLET)	1	300EBU216
2	PANEL	1	302EBU216
3	PANEL	1	301EBU216

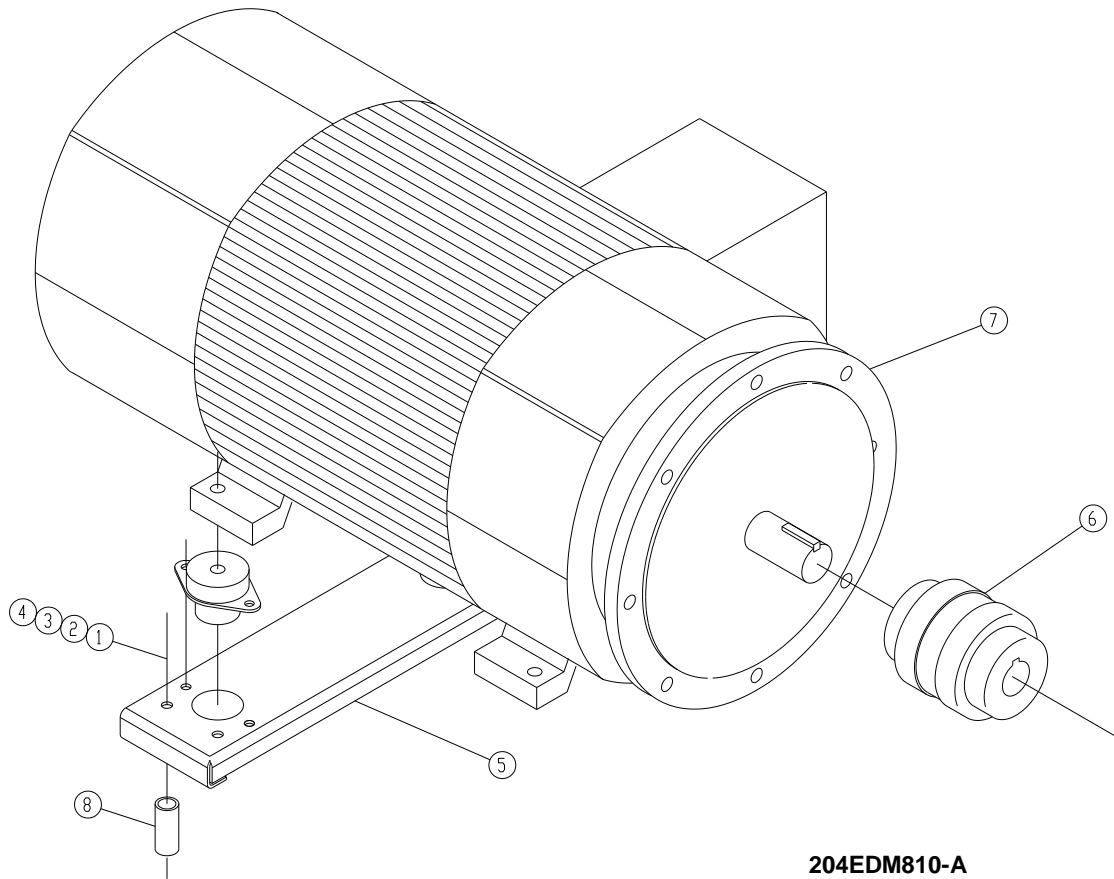
COMPRESSOR BASE GROUP



B/M: 311EAQ4017

Ref. No.	Name of Part	Qty.	Part No.
1	SCREW	2	655EG220
2	LOCK WASHER	4	95B8
3	NUT	4	50B8
4	ISOLATOR, VIBRATION	4	49C48
5	SCREW	8	75LM135
6	NUT	8	50AW35
7	BASE	1	300EAQ285
8	NUT	8	50B8
9	LOCK WASHER	8	95B8
10	SCREW	8	655EG140
11	WASHER	4	95A8
12	SCREW	2	655EG240

MAIN MOTOR GROUP



**204EDM810-A
(Ref. Drawing)**

Ref. No.	Name of Part	Qty.	Part No.
1	WASHER	4	95A7
2	LOCK WASHER	4	95B7
3	NUT	4	50B7
4	SCREW	4	655EF160
5	SUPPORT, MOTOR	1	200EDM620
*6	DRIVE COUPLING, FLEXIBLE.....	1	51L221
7	MOTOR	1	See page 49
8	NIPPLE	4	63AM12X22G

* NOTE: Drive Coupling repair Spider Part No. 2118273.

**MOTOR GROUP (MAIN DRIVE MOTORS)
200 HP**

Name of Part	WYE DELTA Part No.	WYE DELTA Part No.
--------------	-----------------------	-----------------------

**OPEN DRIP PROOF
ODP - EISA EFFICIENCY**

200 HP	60HZ	200 HP	50HZ
MOTOR, 230V	24CA6429	MOTOR, 380V	24CA5874
MOTOR, 460V	24CA6430	MOTOR, 400V	24CA5875
MOTOR, 575V	24CA6431	MOTOR, 415V	24CA5876

TOTALLY ENCLOSED FAN COOLED (TEFC) – EISA EFFICIENCY

200 HP	60HZ	200 HP	50HZ
MOTOR, 230V	24CA6432	MOTOR, 380V	24CA5880
MOTOR, 460V	24CA6433	MOTOR, 400V	24CA5881
MOTOR, 575V	24CA6434	MOTOR, 415V	24CA5882

MOTOR GROUP		MOTOR GROUP	
AIR COOLED FAN MOTOR (COOLING MODULE)		AIR COOLED FAN MOTOR (COOLING MODULE)	
(TEFC, 5 HP, 1.33 S.F., 1200 RPM, 60 HZ)		(TEFC, 5 HP, 1.33 S.F., 1000 RPM, 50 HZ)	
VOLTAGE	PART NO.	VOLTAGE	PART NO.
MOTOR, 230V	24CA6587	MOTOR, 380V	24CA5887
MOTOR, 460V	24CA6587	MOTOR, 400V	24CA5888
MOTOR, 575V	24CA6588	MOTOR, 415V	24CA5889

WATER COOLED FAN MOTOR (ENCLOSURE) VENT FAN		
(TEFC, 1200 RPM, 60 HZ, 1.0 S.F.)		
VOLTAGE	PART NO.	HP
MOTOR, 230V	24CA2464	1/4
MOTOR, 460V	24CA2464	1/4
MOTOR, 575V	24CA4178	1/4

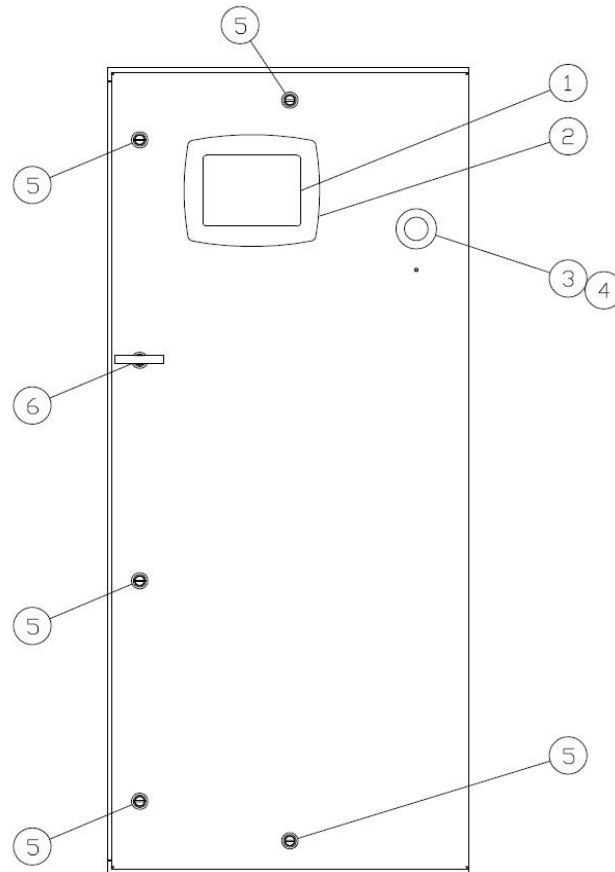
WATER COOLED FAN MOTOR (ENCLOSURE) VENT FAN		
(TEFC, 1500 RPM, 50 HZ, 1.0 S.F.)		
VOLTAGE	PART NO.	HP
MOTOR, 380V	24CA522	1/2
MOTOR, 400V	24CA2645	1/2
MOTOR, 415V	24CA523	1/2

OVERLOAD RELAY HEATER CONVERSION LISTING

Refer to Motor Nameplate “Amperage” and Decal in Control Panel for Selection of Overload Relay Heater Packs

CUTLER-HAMMER PART NUMBER	GARDNER DENVER PART NUMBER
H2002B	24CA4101
H2003B	24CA4102
H2004B	24CA4103
H2005B	24CA4104
H2006B	24CA4105
H2007B	24CA4106
H2008B	24CA4107
H2009B	24CA4108
H2010B	24CA4109
H2011B	24CA4110
H2012B	24CA4111
H2013B	24CA4112
H2014B	24CA4113
H2015B	24CA4114
H2016B	24CA4115
H2017B	24CA4116
H2018	24CA2924
H2019	24CA2925
H2020	24CA2926
H2021	24CA2927
H2022	24CA2893
H2023	24CA2894
H2024	24CA2928

AIRSMART DISPLAY PANEL



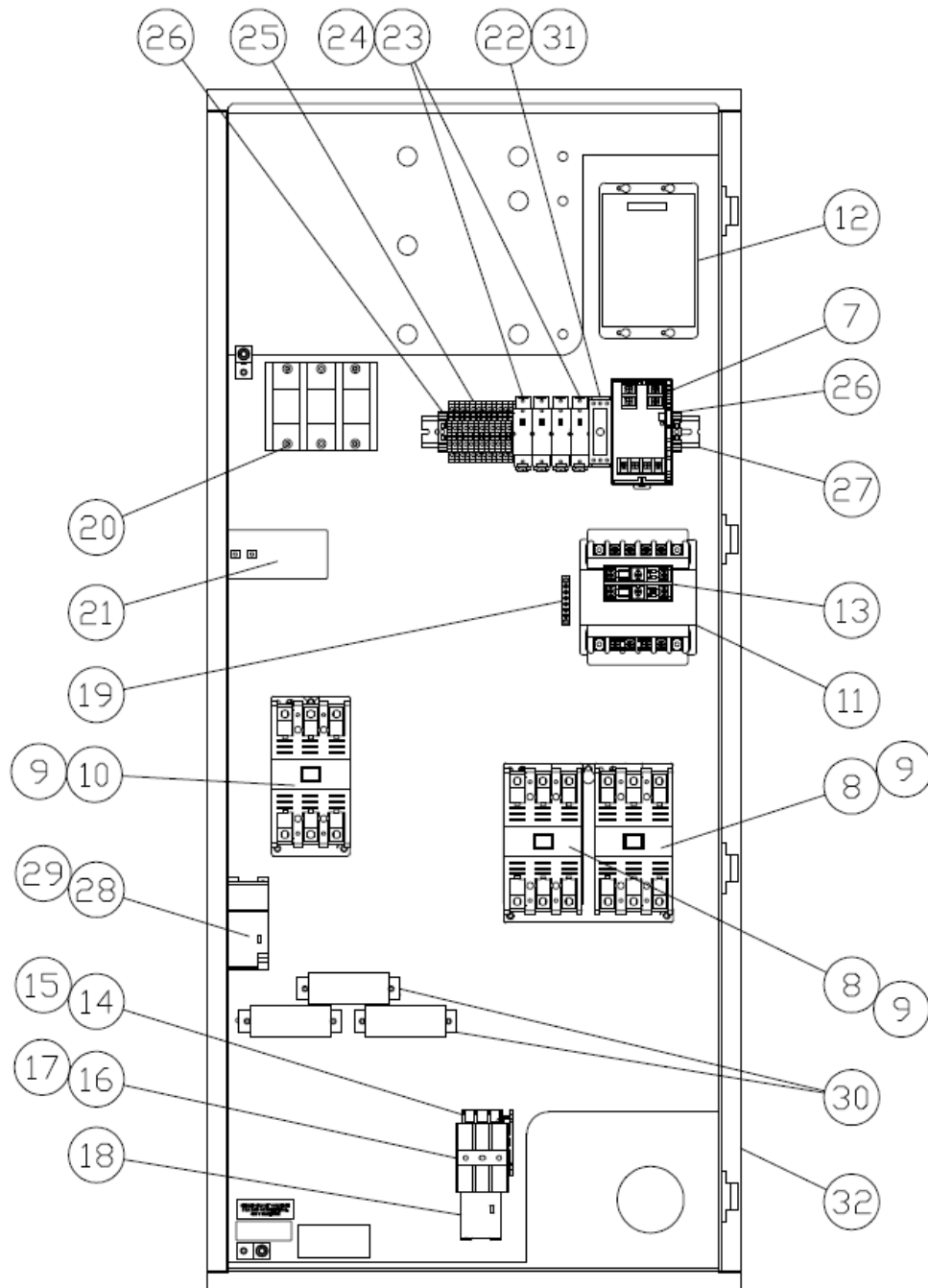
322EAQ810-A
(Ref. Drawing)

Ref. No.	Name of Part	QTY.	B/M * Part No.
1	AIRSMART CONTROLLER	1	300ETK375
2	GASKET	1	VP1033867
3	NAME PLATE EMERGENCY STOP...	1	24CA7110
4	CONTACT BLOCK	1	24CA7111
5	DOOR LATCH, SLOTTED	5	24CA7129
6	DOOR LATCH.....	1	24CA7130

*** Drawing 322EAQ810 and B/M references the following part numbers**

415EAQ466	419EAQ466
423EAQ466	432EAQ466
433EAQ466	435EAQ466

CONTROLLER ASSEMBLY WYE-DELTA, SIZE "N" STARTER CONTROL BOX

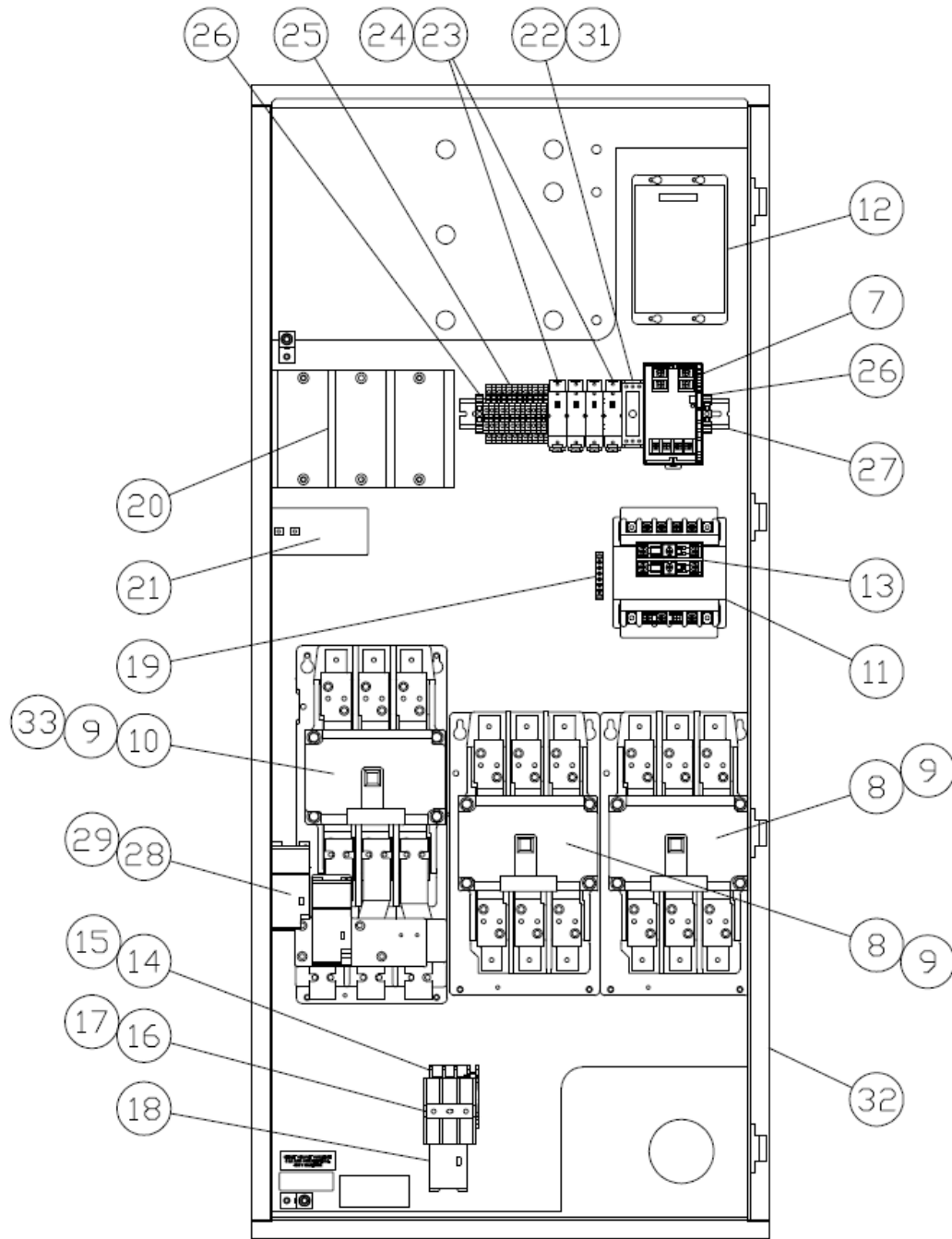


**319EAQ810-A
(Ref. Drawing)**

**CONTROLLER ASSEMBLY WITH WYE-DELTA STARTER,
LESS and WITH CURRENT MONITOR
200 HP, 575 VOLT, SIZE "N"**

			WITH CURRENT MONITOR
			200 HP 575V
Ref. No.	Name of Part	QTY.	
	UL TYPE 4 CONTROL BOX		423EAQ466
1	AIRSMART DISPLAY MODULE	1	300ETK375
2	GASKET.....	1	VP1033867
3	PUSH/PULL "EMERGENCY STOP"	1	24CA7110
4	CONTACT BLOCK	1	24CA7111
5	DOOR LATCH, SLOTTED.....	5	24CA7129
6	DOOR LATCH	1	24CA7130
7	POWER SUPPLY	1	24CA6168
8	CONTACTOR.....	2	24CA3259
9	COIL.....	3	2116555
10	STARTER SIZE N	1	24CA3255
11	TRANSFORMER.....	1	2118245
12	AIRSMART CONTROLLER.....	1	300ETK1173F
13	FUSE	2	24CA3722
14	STARTER	1	24CA4134
15	COIL.....	1	2116923
16	FUSE HOLDER	1	24CA4098
17	FUSE	3	24CA4096
18	RELAY	2	24CA4086
19	GROUND BAR	1	24CA7142
20	POWER DISTRIBUTION BLOCK	1	24CA7132
21	TRANSFORMER.....	1	24CA4242
22	TRANSDUCER.....	1	24CA6095
23	RELAY	4	TEN000670
24	SOCKET	4	TEN000671
25	TERMINAL BLOCK BI-LEVEL	12	24CA5984
26	TERMINAL BLOCK END STOP.....	2	24CA5987
27	DIN RAIL	1	24CA5991
28	RELAY	1	24CA4087
29	TERMINAL BLOCK	1	24CA7131
30	TRANSFORMER.....	3	24CA5886
31	RESISTOR.....	1	24CA6096
32	AIRSMART CONTROLLER, NEMA 4	1	301EDM179

CONTROLLER ASSEMBLY, WITH WYE-DELTA STARTER & CURRENT MONITOR SIZE "5" STARTER CONTROL BOX

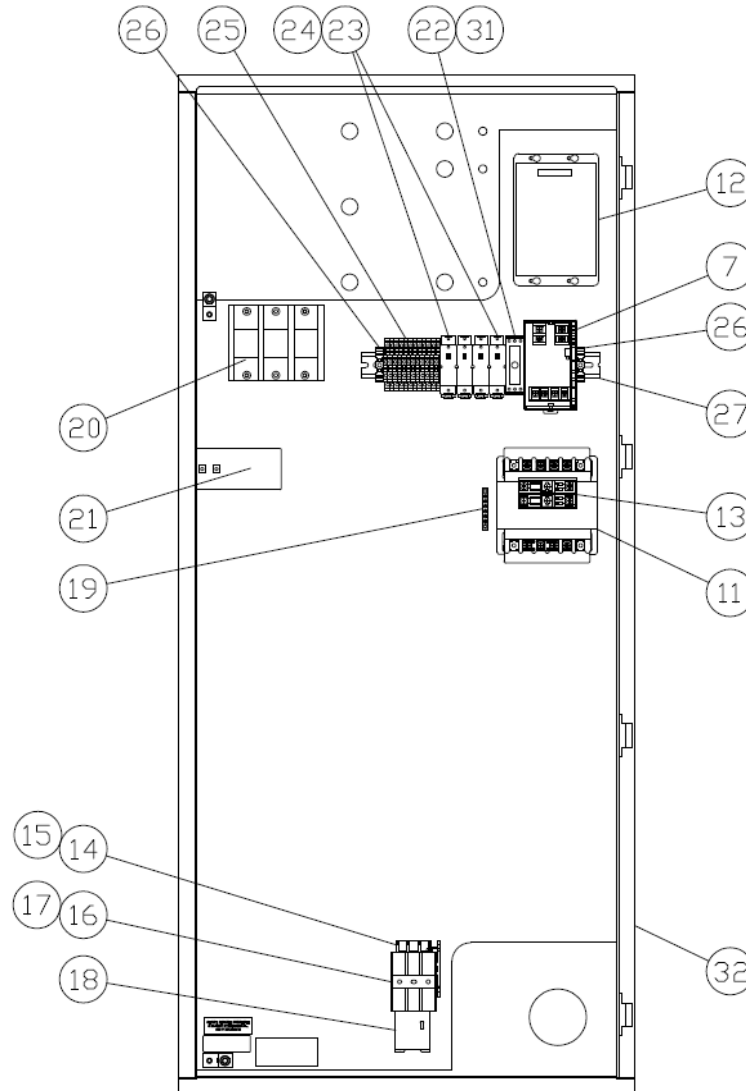


318EAQ810-A
(Ref. Drawing)

**CONTROLLER ASSEMBLY WITH WYE-DELTA STARTER, WITH CURRENT MONITOR
200 HP, 380 & 460 VOLT, SIZE "5"**

Ref. No.	Name of Part	QTY.	200 HP 380V	200 HP 460V
	UL TYPE 4 CONTROL BOX.....		415EAQ466	419EAQ466
1	AIRSMART DISPLAY MODULE	1	300ETK375	300ETK375
2	GASKET	1	VP1033867	VP1033867
3	PUSH/PULL "EMERGENCY STOP"	1	24CA7110	24CA7110
4	CONTACT BLOCK.....	1	24CA7111	24CA7111
5	DOOR LATCH, SLOTTED.....	5	24CA7129	24CA7129
6	DOOR LATCH	1	24CA7130	24CA7130
7	POWER SUPPLY	1	24CA6168	24CA6168
8	CONTACTOR	2	24CA3696	24CA3696
9	COIL	3	2115952	2115952
10	STARTER SIZE 5	1	24CA3490	24CA3490
11	TRANSFORMER	1	2116865	2118244
12	AIRSMART CONTROLLER.....	1	300ETK1173F	300ETK1173F
13	FUSE	2	24CA3723	24CA2783
14	STARTER.....	1	24CA4134	24CA4134
15	COIL	1	2116923	2116923
16	FUSE HOLDER.....	1	24CA4098	24CA4098
17	FUSE	3	24CA4096	24CA4097
18	RELAY	2	24CA4086	24CA4086
19	GROUND BAR.....	1	24CA7142	24CA7142
20	POWER DISTRIBUTION BLOCK	1	24CA7132	24CA7132
21	TRANSFORMER	1	24CA4242	24CA4242
22	TRANSDUCER	1	24CA6095	24CA6095
23	RELAY	4	TEN000670	TEN000670
24	SOCKET	4	TEN000671	TEN000671
25	TERMINAL BLOCK BI-LEVEL.....	12	24CA5984	24CA5984
26	TERMINAL BLOCK END STOP	2	24CA5987	24CA5987
27	DIN RAIL.....	1	24CA5991	24CA5991
28	RELAY	1	24CA4087	24CA4087
29	TERMINAL BLOCK.....	1	24CA7131	24CA7131
31	RESISTOR	1	24CA6096	24CA6096
32	AIRSMART CONTROLLER, NEMA 4...	1	301EDM179	301EDM179
33	TRANSFORMER	3	24CA7156	24CA7156

**CONTROLLER ASSEMBLY, LESS STARTER AND WITH CURRENT MONITOR
200, 230, 380, 460 & 575 VOLT**

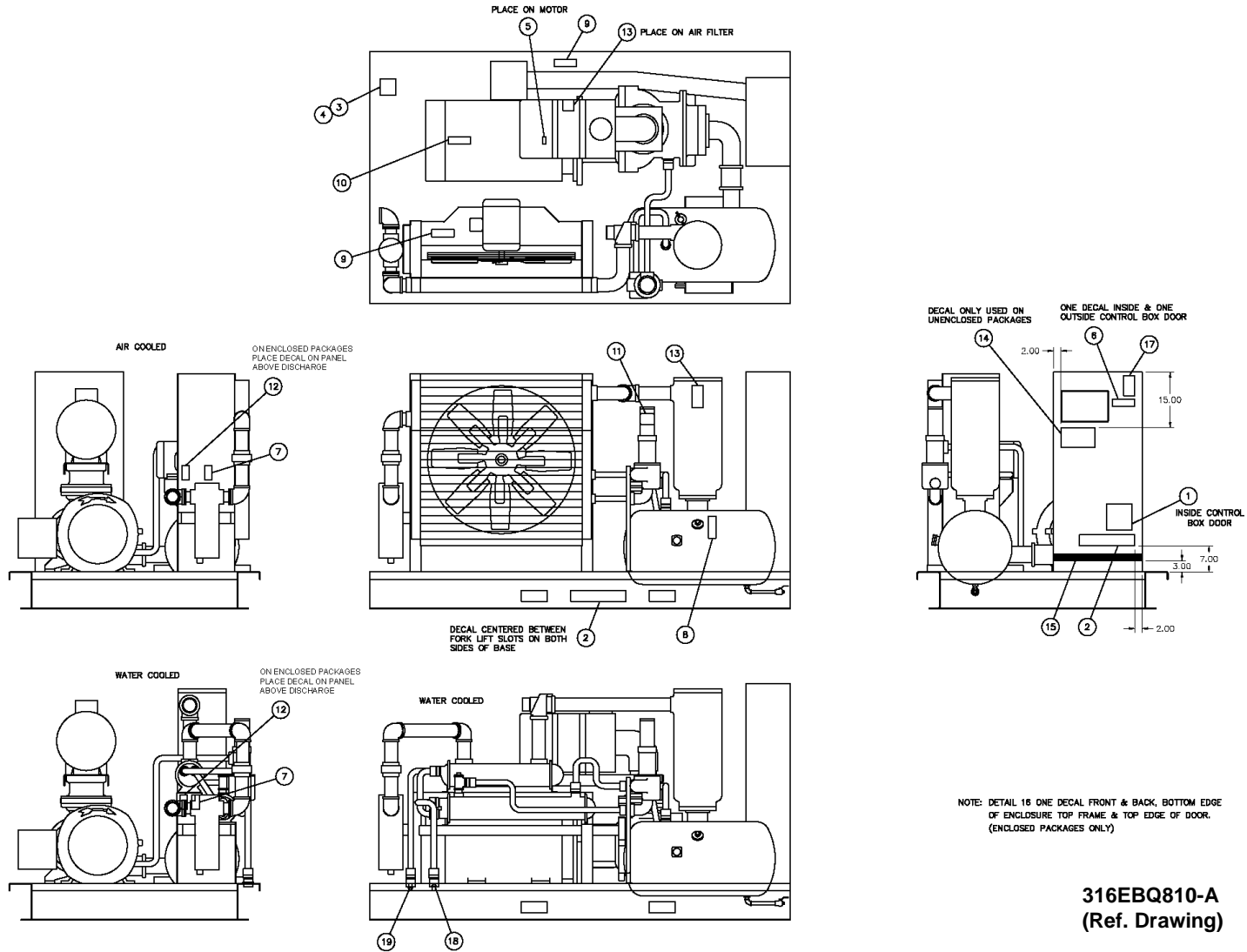


**323EAQ810-A
(Ref. Drawing)**

**CONTROLLER ASSEMBLY, LESS STARTER AND WITH CURRENT MONITOR
200, 230, 380, 460 & 575 VOLT**

Ref. No.	Name of Part	QTY.	230 VOLT	380 VOLT	460 VOLT	575 VOLT
	UL TYPE 4 CONTROL BOX		432EAQ466	433EAQ466	434EAQ466	435EAQ466
1	AIRSMART DISPLAY MODULE	1	300ETK375	300ETK375	300ETK375	300ETK375
2	GASKET	1	VP1033867	VP1033867	VP1033867	VP1033867
3	PUSH/PULL "EMERGENCY STOP"	1	24CA7110	24CA7110	24CA7110	24CA7110
4	CONTACT BLOCK	1	24CA7111	24CA7111	24CA7111	24CA7111
5	DOOR LATCH, SLOTTED	5	24CA7129	24CA7129	24CA7129	24CA7129
6	DOOR LATCH	1	24CA7130	24CA7130	24CA7130	24CA7130
7	POWER SUPPLY	1	24CA6168	24CA6168	24CA6168	24CA6168
11	TRANSFORMER	1	2118244	2116865	2118244	2118245
12	AIRSMART CONTROLLER	1	300ETK1173F	300ETK1173F	300ETK1173F	300ETK1173F
13	FUSE	2	24CA2785	24CA3723	24CA2783	24CA3722
14	STARTER	1	24CA4134	24CA4134	24CA4134	24CA4134
15	COIL	1	2116923	2116923	2116923	2116923
16	FUSE HOLDER	1	24CA4098	24CA4098	24CA4098	24CA4098
17	FUSE	3	24CA4097	24CA4096	24CA4096	24CA4096
18	RELAY	2	24CA4086	24CA4086	24CA4086	24CA4086
19	GROUND BAR	1	24CA7142	24CA7142	24CA7142	24CA7142
20	POWER DISTRIBUTION BLOCK	1	24CA5948	24CA5948	24CA5948	24CA5948
21	TRANSFORMER	1	24CA4242	24CA4242	24CA4242	24CA4242
22	TRANSDUCER	1	24CA6095	24CA6095	24CA6095	24CA6095
23	RELAY	4	TEN000670	TEN000670	TEN000670	TEN000670
24	SOCKET	4	TEN000671	TEN000671	TEN000671	TEN000671
25	TERMINAL BLOCK BI-LEVEL	12	24CA5984	24CA5984	24CA5984	24CA5984
26	TERMINAL BLOCK END STOP	2	24CA5987	24CA5987	24CA5987	24CA5987
27	DIN RAIL	1	24CA5991	24CA5991	24CA5991	24CA5991
31	RESISTOR	1	24CA6096	24CA6096	24CA6096	24CA6096
32	AIRSMART CONTROLLER, NEMA 4 ...	1	301EDM179	301EDM179	301EDM179	301EDM179

IDENTIFICATION AND INSTRUCTION GROUP



316EBQ810-A
(Ref. Drawing)

IDENTIFICATION AND INSTRUCTION GROUP

B/M: 301EBQ4011
303EBQ4011
304EBQ4011
309EAQ4011

Ref. No.	Name of Part	Qty.	Part No.
2	DECAL, ELECTRA SAVER, LARGE	2	VP1051547
3	RIVET, 0.156 DIA.....	4	70E13
4	NAME PLATE	1	208EAQ496
* 5	DECAL, ROTATION ARROW	1	304EFC077
* 6	DECAL, ISO WARNING, CONTROL BOX.....	2	VP1009371
* 7	DECAL, ISO WARNING, MOISTURE TRAP	1	VP1009380
* 8	DECAL, ISO WARNING, SEPARATOR TANK	1	VP1009376
* 9	DECAL, ISO WARNING, FAN/COOLER HOUSING	2	VP1009582
* 10	DECAL, ISO WARNING, MOTOR	1	VP1009374
11	DECAL, OIL FILL ELEMENT INSTALL.....	1	326EAQ077
* 12	DECAL, ISO WARNING, PACKAGE DISCHARGE AIR	1	VP1009623
* 13	DECAL, NOTICE, USE GENUINE GD PARTS.....	2	CC1009474
14	DECAL, GD LOGO, SMALL.....	1	TEN000780
15	DECAL, STRIPE, LARGE	1	VP1051552
* 16	DECAL, ISO WARNING, SIDES ABOVE DOORS.....	1	VP1044837
17	DECAL, CAGI PERFORMANCE.... ..	1	CC1031484
18	DECAL, HEAT EXCHANGE "IN"	1	200ESP077
19	DECAL, HEAT EXCHANGE "OUT".....	1	201ESP077
21	DECAL, ISO WARNING COUPLING HOUSING	1	VP1009375

* For Replacement Decals Order Part Number CC1010403 Decal Group Sheet.

REPAIR KITS

Your Gardner Denver rotary screw compressor is designed and manufactured for many years of reliable operation. All components are engineered to exacting specifications, which will function together as a system to provide maximum efficiency. To insure the continuing integrity of compressor operation, use only original quality genuine Gardner Denver replacement parts and accessories.

Name of Part	Qty.	Part No.
ROUTINE MAINTENANCE KIT, HEAVY DUTY AIR FILTER		
ELEMENT, AIR FILTER	2	2118361
ELEMENT, OIL FILTER	3	2118342
SEPARATOR KIT		
OIL SEPARATOR	1	VP1040693
GASKET ELIMINATOR	1	25BC222
LUBRICANT, OIL SEAL GREASE	1	2116755
CHECK VALVE	1	90AR261
PNEUMATIC CONTROLS AND GAUGES		
CHECK VALVE	3	90AR261
CONTROL VALVE	1	90AR1034
CONTROL VALVE	1	90AR1082
PRESSURE REGULATOR	1	88H367
PRESSURE GAUGE	1	2118767
ELECTRICAL CONTROL KIT		
SOLENOID VALVE	1	91B250
SOLENOID VALVE	1	91B243
SOLENOID VALVE	1	91B245
THERMISTOR PROBE	2	21D264
TRANSDUCER	2	88H365
VACUUM SWITCH	1	88H195
WATER TEMPERATURE REGULATOR, OPTIONAL	1	90AR151
MAGNETIC WATER SHUTOFF VALVE, NEMA 4, OPTIONAL		91B173
TURN VALVE ACTUATOR O-RING KIT, EAU ONLY		
O-RING, TOP OF STEM	2	25BC738
O-RING, BODY TO MANIFOLD, LARGE	2	25BC37
O-RING, BODY TO MANIFOLD, SMALL	2	25BC35
O-RING, TUBE	2	2009224
O-RING, BODY TO MANIFOLD, LARGE	2	25BC118
BEARING KIT		
ROLLER BEARING	1	12BA52
ROLLER BEARING	1	12W34
BEARING	1	12BA252
ROLLER BEARING	1	12BA192
SPRING, WAVE	1	78W90
SPRING, WAVE	1	78W110
RETAINING RING	1	65W61
RETAINING RING	1	65W14
PERIODIC MAINTENANCE KIT, INLET VALVE		
O-RING	1	25BC298
SPRING	1	78W62
SPRING	1	78W61
O-RING	1	25AM30
RETAINING RING	1	74D89
GASKET ELIMINATOR	1	25BC222

REPAIR KIT (Continued)

Name of Part	Qty.	Part No.
GASKET KIT		334SSU6013
SHIM SET	1	77H116
SHIM SET	1	77H50
GASKET ELIMINATOR.....	1	25BC222
OIL SEAL KIT		324SSU6013
WEAR SLEEVE	1	80M28
OIL SEAL	1	60DD571
OIL SEAL	1	60DD689
O-RING	1	25BC205
CHECK VALVE.....	1	90AR923
PERIODIC OVERHAUL TURN VALVE KIT		335SSU6013
ROLLER BEARING	2	12BA51
SPRING.....	1	78W50
KEY.....	1	35C114
PACKING RING.....	4	60AM46
SEAL.....	2	60DD801
GASKET.....	4	25BC138N
BUMPER.....	2	32E15
RETAINER PLATE	2	300SSU168
RETAINING RING	2	74D49
SEAL.....	2	60DD65
WEAR SLEEVE INSTALLATION/REMOVAL KIT		302SSU4017
PULLER	1	200SSQ219
PLATE, PULLER	1	300SSU340
SCREW	1	655EE030
SCREW	1	655EE120A
SCREW	2	75D178
GUIDE	1	200SSU450
TOOL	1	200SSQ074
LUBRICANT, AEON 9000SP, STANDARD		
5 GALLON PAIL	1	28H109
55 GALLON DRUM.....	1	28H110
LUBRICANT, AEON 9000TH		
5 GALLON PAIL	1	28H286
55 GALLON DRUM.....	1	28H270
LUBRICANT, AEON 6000FG		
5 GALLON PAIL	1	28H99
55 GALLON DRUM.....	1	28H100
LUBRICANT, AEON 6000FG-68		
5 GALLON PAIL	1	28H314
55 GALLON DRUM.....	1	28H315
LUBRICANT, AEON BIO		
5 GALLON PAIL	1	28H102
55 GALLON DRUM.....	1	28H103
TOUCH-UP PAINT		
5 GALLON PAIL, WHITE	1	28H76
1 GALLON CAN, WHITE.....	1	28H84
1 QUART CAN, WHITE	1	28H83
5 GALLON PAIL, RED	1	28H325
1 GALLON CAN, RED	1	28H324
1 QUART CAN, RED	1	28H323

