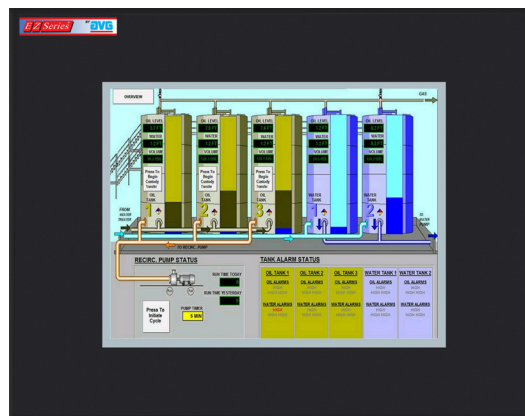


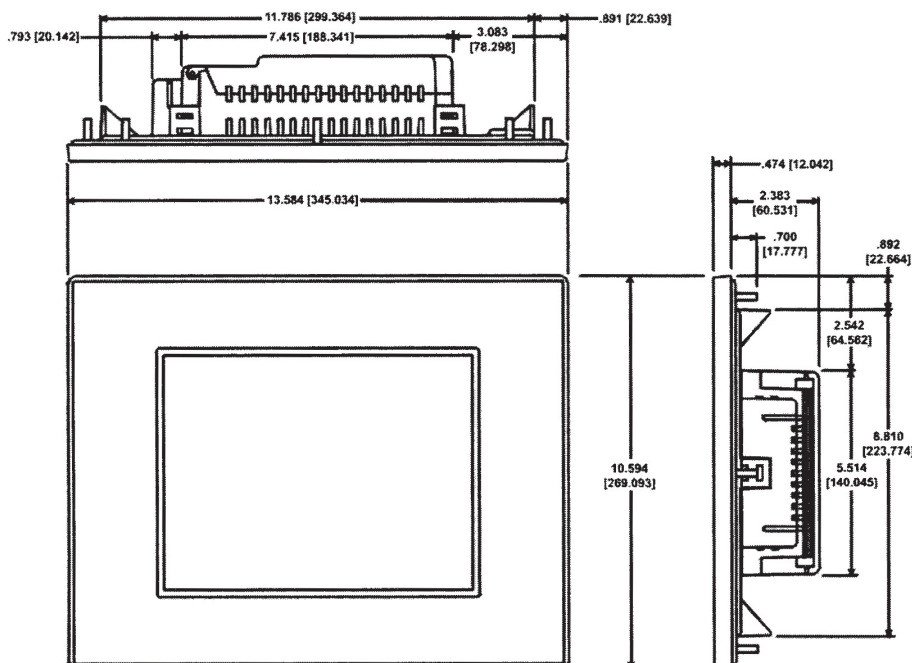
10" TFT EZW Restricted Embedded Windows HMI (Great Replacement for PanelView 1000, 1000E with DH+)

EZW Series Touchpanel feature:

- 400 NITs, 75K Hrs @ 55°C
- 800 x 600 screen resolution
- 10.4" diagonal color TFT
- Restricted Windows Embedded, Fully Loaded, Fully American, 2 Serial, 4 USB, Ethernet
- 400 NITs, 75K Hrs @ 55°C
- Patented HMI on-line edit, No downtime
- Tiny EZminiWifi installed on the HMI allows Laptop to program HMI from 400 ft. away. \$49
- Only HMI that can still talk to AB's DH+
- EZTouch EZW HMIs have real time access to process data stored inside the HMI or the USB drive and the micro SD using AVG File Manager utility.
- EZTouch EZW HMIs in a plant or multiple plants have the capacity to be monitored using EZPlantview software.
- Best looking objects and animation with 65K colors.
- Most Rugged 0.090" thick anti-glare touch screen.
- Fastest touch response time of any HMI.
- Unicode for multiple languages.
- Easiest Programming Software, design time in hrs not days.
- Full Project simulation on your PC.
- "C level" scripting and logic expressions.
- Data-logging, Recipes, Emails, USBs. Free Chart recorder.
- Most advanced Alarm management and logging.
- On-Screen Recipe Edit.
- Every model Fully Loaded, No "R" Reduced Features models.
- Remote Monitoring and Control, Smart phones & Ethernet.
- Communicate to all PLCs, including DH+ & Ethernet IP.
- Dual PLC Drivers with automatic tag conversion.
- Mfr. cost reduction & IP protection for qualified customers.
- Unique Visibility tag for best screen space utilization.
- Pass-through programming for all PLCs.



Model Number	Interface	Price	Del.
EZW-T10C-E	All serial and Ethernet drivers	\$1,899	STK
EZW-T10C-EH	Serial, Ethernet and Allen-Bradley's DH+	\$ 2,699	STK

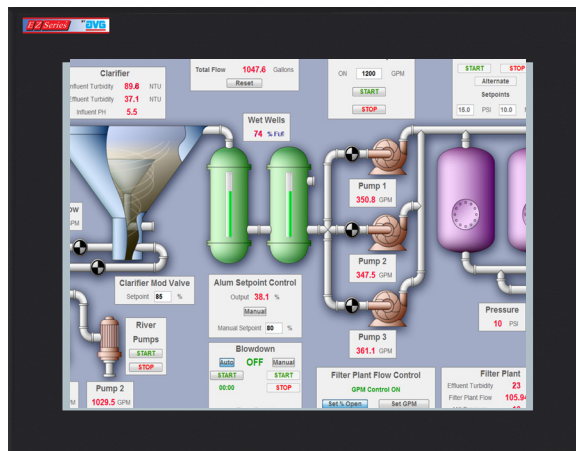


Proudly Made in America

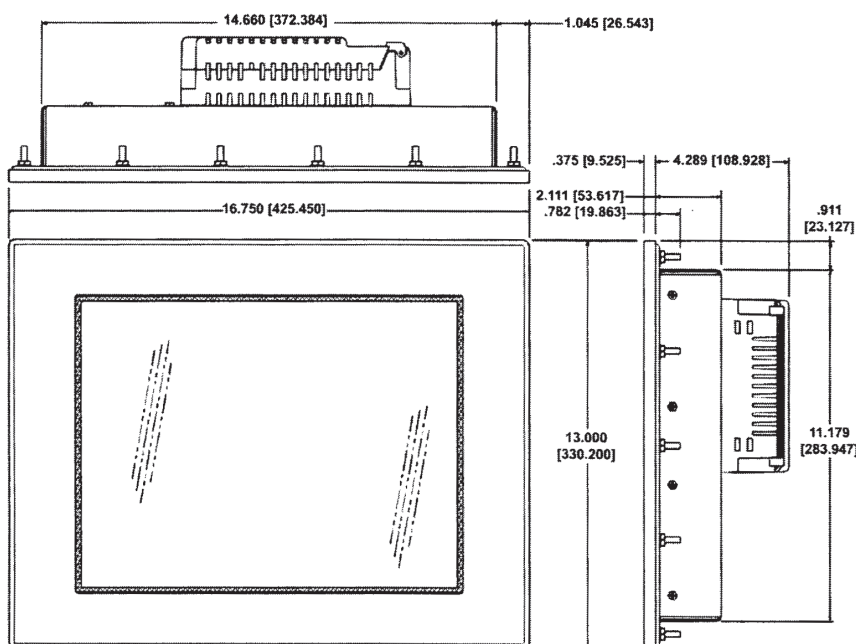
15" TFT Color EZW Restricted Embedded Windows HMI (Great Replacement for PanelView 1200, 1400, 1400E with DH+)

EZW Series Touchpanel feature:

- 400 NITs, 75K Hrs @ 55°C
- 1024 x 768 screen resolution
- 15" diagonal color TFT
- Restricted Windows Embedded, Fully Loaded, Fully American, 2 Serial, 4 USB, Ethernet
- 400 NITs, 75K Hrs @ 55°C
- Patented HMI on-line edit, No downtime
- Tiny EZminiWifi installed on the HMI allows Laptop to program HMI from 400 ft. away. \$49
- Only HMI that can still talk to AB's DH+
- EZTouch EZW HMIs have real time access to process data stored inside the HMI or the USB drive and the micro SD using AVG File Manager utility.
- EZTouch EZW HMIs in a plant or multiple plants have the capacity to be monitored using EZPlantview software.
- Best looking objects and animation with 65K colors.
- Most Rugged 0.090" thick anti-glare touch screen.
- Fastest touch response time of any HMI.
- Unicode for multiple languages.
- Easiest Programming Software, design time in hrs not days.
- Full Project simulation on your PC.
- "C level" scripting and logic expressions.
- Data-logging, Recipes, Emails, USBs. Free Chart recorder.
- Most advanced Alarm management and logging.
- On-Screen Recipe Edit.
- Every model Fully Loaded, No "R" Reduced Features models.
- Remote Monitoring and Control, Smart phones & Ethernet.
- Communicate to all PLCs, including DH+ & Ethernet IP.
- Dual PLC Drivers with automatic tag conversion.
- Mfr. cost reduction & IP protection for qualified customers.
- Unique Visibility tag for best screen space utilization.
- Pass-through programming for all PLCs.



Model Number	Interface	Price	Del.
EZW-T15C-E	All serial and Ethernet drivers	\$2,499	STK
EZW-T15C-EH	Serial, Ethernet and Allen-Bradley's DH+	\$3,599	STK



Proudly Made in America