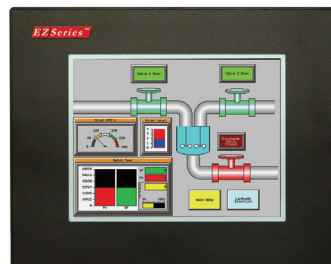


EZTouch Original 3.5" TFT Panel

EZTouch Original 3.5" features:

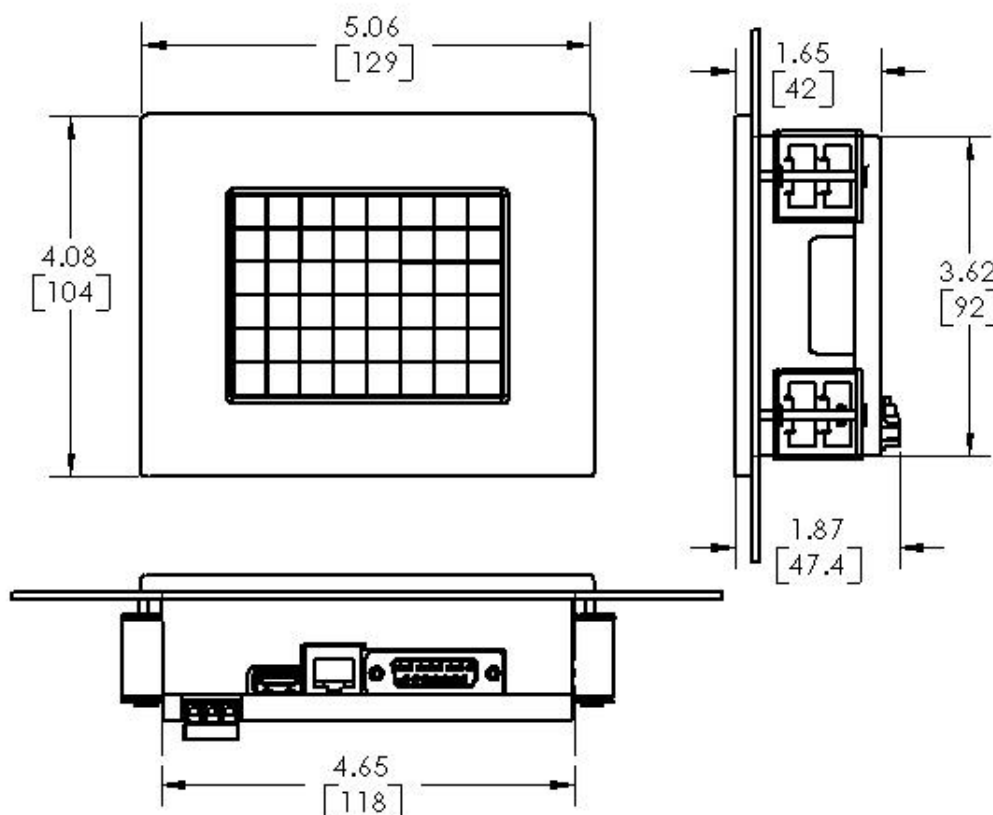
- 400 NITs, 75K Hrs @ 55°C
- 320 x 240 screen resolution
- 3.5" diagonal color TFT
- 128 Colors
- Patented HMI on-line edit, No downtime
- Best looking objects and animation.
- On-Screen Recipe Edit.
- Remote Monitoring and Control, Smart phones & Ethernet.
- Communicate to all PLCs, including EtherNet/IP.
- Dual PLC Drivers with automatic tag conversion.
- Mfr. cost reduction & IP protection for qualified customers.
- Most Rugged 0.090" thick anti-glare touch screen.
- Fastest touch response time of any HMI.
- Unique Visibility tag for best screen space utilization.
- Unicode for multiple languages.
- Easiest Programming Software, design time in hrs not days.
- Full Project simulation on your PC. Custom start-up screen.
- "C level" scripting and logic expressions.
- Most advanced Alarm management and logging.
- Pass-through programming for all PLCs.



| Model Number | Interface | Price | Del. |
|------------------|---|-------|------|
| EZ-T4C-FS | All serial drivers (non-expandable) | \$299 | STK |
| EZ-T4C-FE | Ethernet IP, EZ IP, Modbus TCP/IP, SRTP, Koyo ECOM and TCP/IP for programming | \$399 | STK |

Notes:

1. These panels do not have a built-in Real-time clock and program back-up battery as the user program stored in flash
2. They do not have the option for use of Network cards such as DH+ or Profibus
3. These panels do not need RMC card for Remote Monitoring and Control, as this function can be performed over either built-in Ethernet port or Serial port



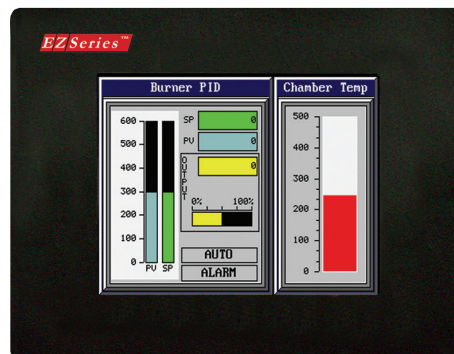
Proudly Made in America

EZTouch Original 6" TFT Color Panels

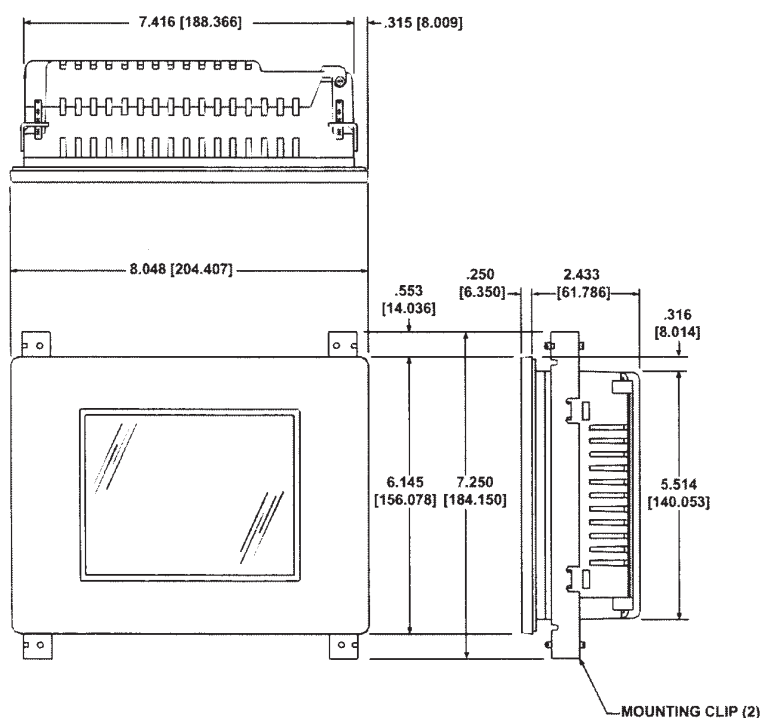
(Great Replacement for PanelView 550, 600 with DH+/RIO)

EZTouch Original feature:

- 400 NITs, 75K Hrs @ 55°C
- 320 x 240 screen resolution
- 5.7" diagonal color TFT
- 128 Colors
- Patented HMI on-line edit, No downtime
- Only HMI that can still talk to AB's DH+/RIO, DeviceNet, MB+, Siemens with Profibus and Mitsubishi with CCLink
- Best looking objects and animation.
- On-Screen Recipe Edit.
- Remote Monitoring and Control
- Communicate to all PLCs, including DH+/RIO.
- Dual PLC Drivers with automatic tag conversion.
- Mfr. cost reduction & IP protection for qualified customers.
- Most Rugged 0.090" thick anti-glare touch screen.
- Fastest touch response time of any HMI.
- Unique Visibility tag for best screen space utilization.
- Unicode for multiple languages.
- Easiest Programming Software, design time in hrs not days.
- Full Project simulation on your PC. Custom start-up screen.
- "C level" scripting and logic expressions.
- Most advanced Alarm management and logging.
- Pass-through programming for all PLCs.



| Model Number | Interface | Price | Del. |
|--------------|--|---------|------|
| EZ-T6C-FS | All serial drivers and accepts Ethernet and network cards | \$799 | STK |
| EZ-T6C-FSD | DeviceNet | \$1,699 | 3DAY |
| EZ-T6C-FSE | AB Ethernet I/P | \$1,499 | 3DAY |
| EZ-T6C-FSH | DH+, Remote I/O | \$1,499 | 3DAY |
| EZ-T6C-FSM | Modicon MODBUS Plus | \$1,699 | 3DAY |
| EZ-T6C-FSP | Profibus | \$1,699 | 3DAY |
| EZ-T6C-FST | MODBUS TCP/IP | \$1,699 | 3DAY |
| EZ-T6C-FSC | CCLink | \$1,699 | 3DAY |
| EZ-T6C-FSU | Universal Ethernet drivers - DF1, I/P, Modbus TCP/IP, SRTP | \$1,398 | 3DAY |
| EZ-T6C-RMC | RMC card installed | \$919 | 3DAY |



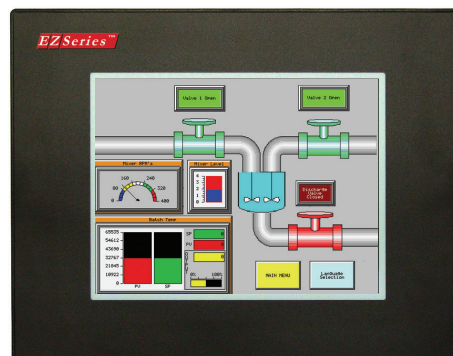
Proudly Made in America

EZTouch Original 8" TFT Color Panels

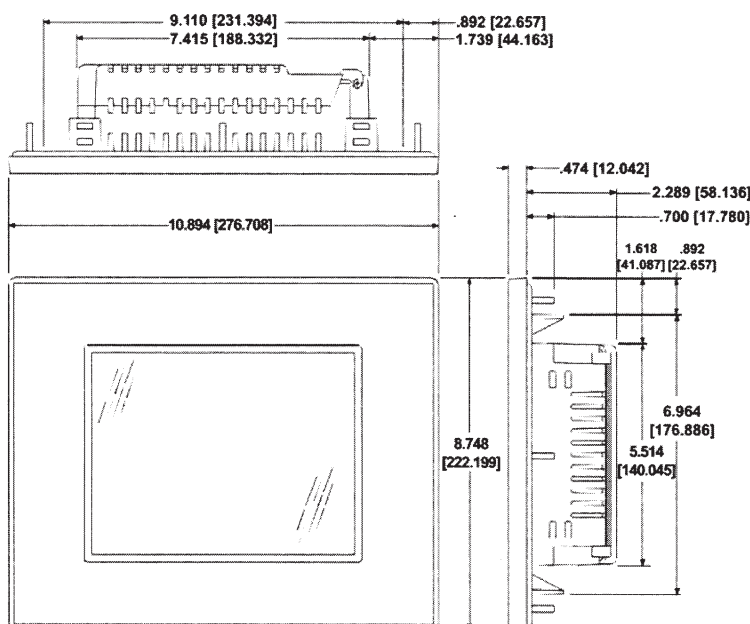
(Great Replacement for PanelView 700, 900 with DH+/RIO)

EZTouch Original feature:

- 400 NITs, 75K Hrs @ 55°C
- 800 x 600 screen resolution
- 8.4" diagonal color TFT
- 128 Colors
- Patented HMI on-line edit, No downtime
- Only HMI that can still talk to AB's DH+/RIO, DeviceNet, MB+, Siemens with Profibus and Mitsubishi with CCLink
- Best looking objects and animation.
- On-Screen Recipe Edit.
- Remote Monitoring and Control
- Communicate to all PLCs, including DH+/RIO.
- Dual PLC Drivers with automatic tag conversion.
- Mfr. cost reduction & IP protection for qualified customers.
- Most Rugged 0.090" thick anti-glare touch screen.
- Fastest touch response time of any HMI.
- Unique Visibility tag for best screen space utilization.
- Unicode for multiple languages.
- Easiest Programming Software, design time in hrs not days.
- Full Project simulation on your PC. Custom start-up screen.
- "C level" scripting and logic expressions.
- Most advanced Alarm management and logging.
- Pass-through programming for all PLCs.



| Model Number | Interface | Price | Del. |
|-------------------|--|---------|------|
| EZ-T8C-F | All serial drivers and accepts Ethernet and network cards | \$1049 | STK |
| EZ-T8C-FD | DeviceNet | \$1,899 | 3DAY |
| EZ-T8C-FE | AB Ethernet I/P | \$1,799 | 3DAY |
| EZ-T8C-FH | DH+, Remote I/O | \$1,799 | 3DAY |
| EZ-T8C-FM | Modicon MODBUS Plus | \$1,899 | 3DAY |
| EZ-T8C-FP | Profibus | \$1,899 | 3DAY |
| EZ-T8C-FT | MODBUS TCP/IP | \$1,899 | 3DAY |
| EZ-T8C-FC | CCLink | \$1,899 | 3DAY |
| EZ-T8C-FU | Universal Ethernet drivers - DF1, I/P, Modbus TCP/IP, SRTP | \$1,698 | 3DAY |
| EZ-T8C-RMC | RMC card Installed | \$1099 | 3DAY |



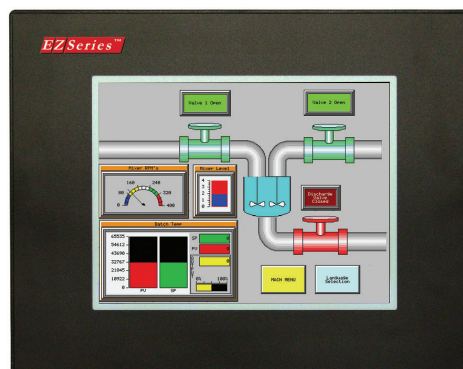
Proudly Made in America

EZTouch Original 10" TFT Color Panels

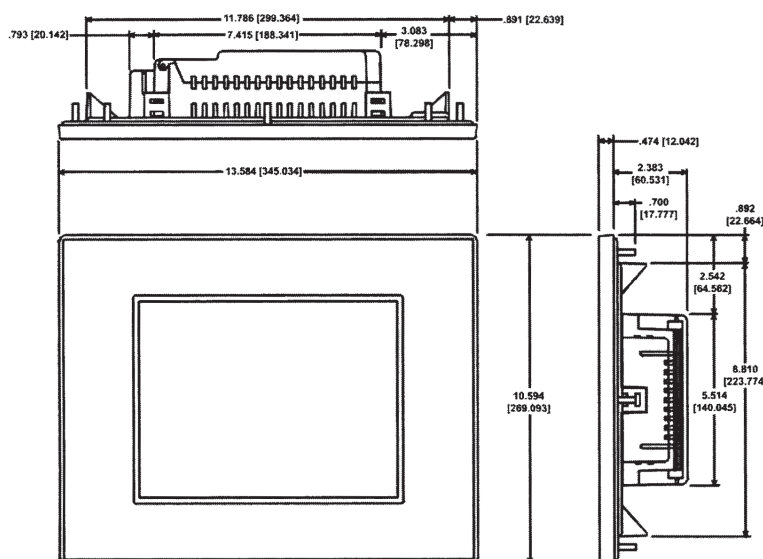
(Great Replacement for PanelView 1000, 1000E with DH+/RIO)

EZTouch Original feature:

- 400 NITs, 75K Hrs @ 55°C
- 800 x 600 screen resolution
- 10.4" diagonal color TFT
- 128 Colors
- Patented HMI on-line edit, No downtime
- Only HMI that can still talk to AB's DH+/RIO, DeviceNet, MB+, Siemens with Profibus and Mitsubishi with CCLink
- Best looking objects and animation.
- On-Screen Recipe Edit.
- Remote Monitoring and Control
- Communicate to all PLCs, including DH+/RIO.
- Dual PLC Drivers with automatic tag conversion.
- Mfr. cost reduction & IP protection for qualified customers.
- Most Rugged 0.090" thick anti-glare touch screen.
- Fastest touch response time of any HMI.
- Unique Visibility tag for best screen space utilization.
- Unicode for multiple languages.
- Easiest Programming Software, design time in hrs not days.
- Full Project simulation on your PC. Custom start-up screen.
- "C level" scripting and logic expressions.
- Most advanced Alarm management and logging.
- Pass-through programming for all PLCs.



| Model Number | Interface | Price | Del. |
|---|--|---------|------|
| EZ-T10C-FS EZ-T10C-F | All serial drivers and accepts optional Ethernet and network cards | \$1,699 | STK |
| EZ-T10C-FSD EZ-T10C-FD | DeviceNet | \$2,499 | 3DAY |
| EZ-T10C-FSE EZ-T10C-FE | AB Ethernet I/P | \$2,199 | 3DAY |
| EZ-T10C-FSH EZ-T10C-FH | DH+, Remote I/O | \$2,199 | 3DAY |
| EZ-T10C-FSM EZ-T10C-FM | Modicon MB+ | \$2,499 | 3DAY |
| EZ-T10C-FSP EZ-T10C-FP | Profibus | \$2,499 | 3DAY |
| EZ-T10C-FST EZ-T10C-FT | MODBUS TCP/IP | \$2,499 | 3DAY |
| EZ-T10C-FSC EZ-T10C-FC | CCLink | \$2,499 | 3DAY |
| EZ-T10C-FSU EZ-T10C-FU | Universal Ethernet drivers - DF1, I/P, Modbus TCP/IP, SRTP | \$1,998 | 3DAY |
| EZ-T10C-RMC | RMC card Installed | \$1649 | 3DAY |



NOTE: Both "F" & "FS" models have same specifications

Proudly Made in America