

EZSeries TouchPLC 8" TFT Color Slim Bezel Panels

8" Color EZSeries TouchPLC - Slim Bezel (8.2" TFT)

These panels have a 8.2" diagonal touch screen with 640x480 pixel resolution. These have an TFT LCD (liquid crystal display) and is available with 64 I/O (max) PLC base. I/O modules are not included with EZSeries TouchPLC and can be purchased separately. Please refer to EZI/O section (9) which lists all the available modules along with part number and pricing. All these panels have a very low slim profile along with a smaller footprint on enclosures.

Features

- 8.2" diagonal color TFT LCD, 128 colors
- NEMA 4, FDA compliant material
- 640x480 pixel resolution
- 512K RAM expandable to 1.5MB
- 512K, 1MB or 2MB option flash card for memory backup
- Ethernet card optional (EZ-ETHERNET)
- MODBUS TCP/IP card optional (EZ-ETHERPLUS)
- 54,000 hour expected bulb half-life
- 192 touch cells (16x12)
- 1/4" gasket and four DIN mounting clips
- 1/4" O-ring gasket and eight mounting studs for NEMA 4, 4X (indoor)
- 4.1" (104.2mm) installed depth

64 I/O EZPLC BASE

- Total Program/Data Memory 64KB
- 3ms Scantime for 1K Instruction
- RS232 & RS422/485 Ports
- ASCII In/Out
- Built-in Calendar/Clock

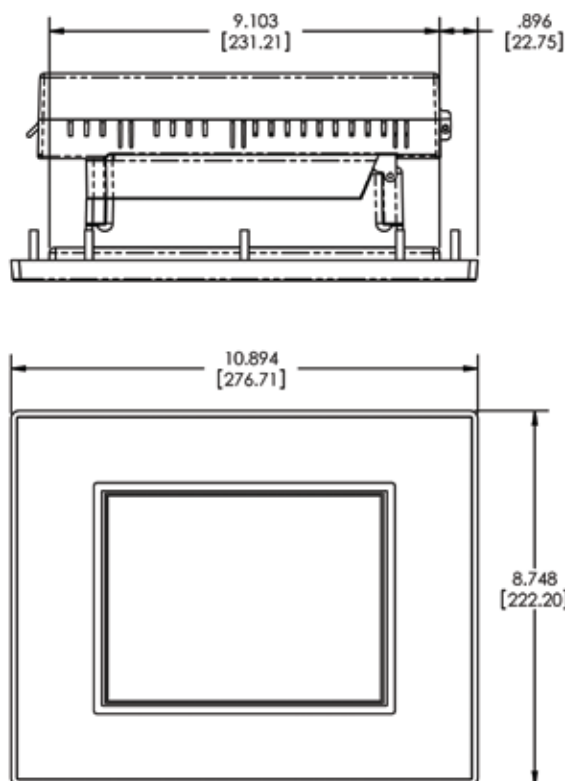


Snap-in I/O

Model Number	Interface	Price	Del.
EZP-T8C-FS-PLC	8" TFT Color, 64 I/O EZPLC base, DC Power	\$1549	STK
EZP-T8C-FS-PLC-E	8" TFT Color, 64 I/O EZPLC base w/Ethernet, DC Power	\$1648	3DAY
EZP-T8C-FS-PLC-D	8" TFT Color, 64 I/O EZPLC base w/DeviceNet, DC Power	\$1628	3DAY
EZP-T8C-FS-PLC-P	8" TFT Color, 64 I/O EZPLC base w/Profibus, DC Power	\$1678	TBRS

Screw-down I/O

Model Number	Interface	Price	Del.
EZPP-T8C-FS-PLC	8" TFT Color, 64 I/O EZPLC base, DC Power	\$1899	STK
EZPP-T8C-FS-PLC-E	8" TFT Color, 64 I/O EZPLC base w/Ethernet, DC Power	\$1899	3DAY
EZPP-T8C-FS-PLC-D	8" TFT Color, 64 I/O EZPLC base w/DeviceNet, DC Power	\$1999	3DAY
EZPP-T8C-FS-PLC-P	8" TFT Color, 64 I/O EZPLC base w/Profibus, DC Power	\$2699	TBRS



8" TFT Color Dimensions

