

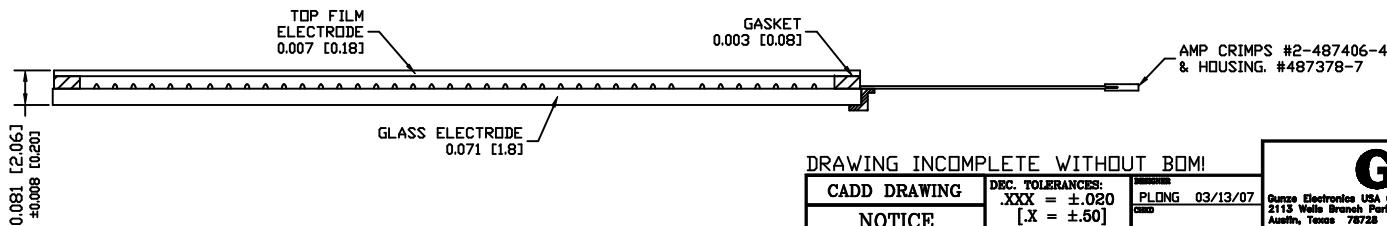
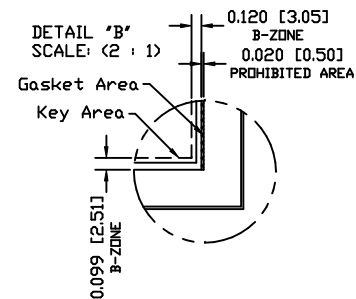
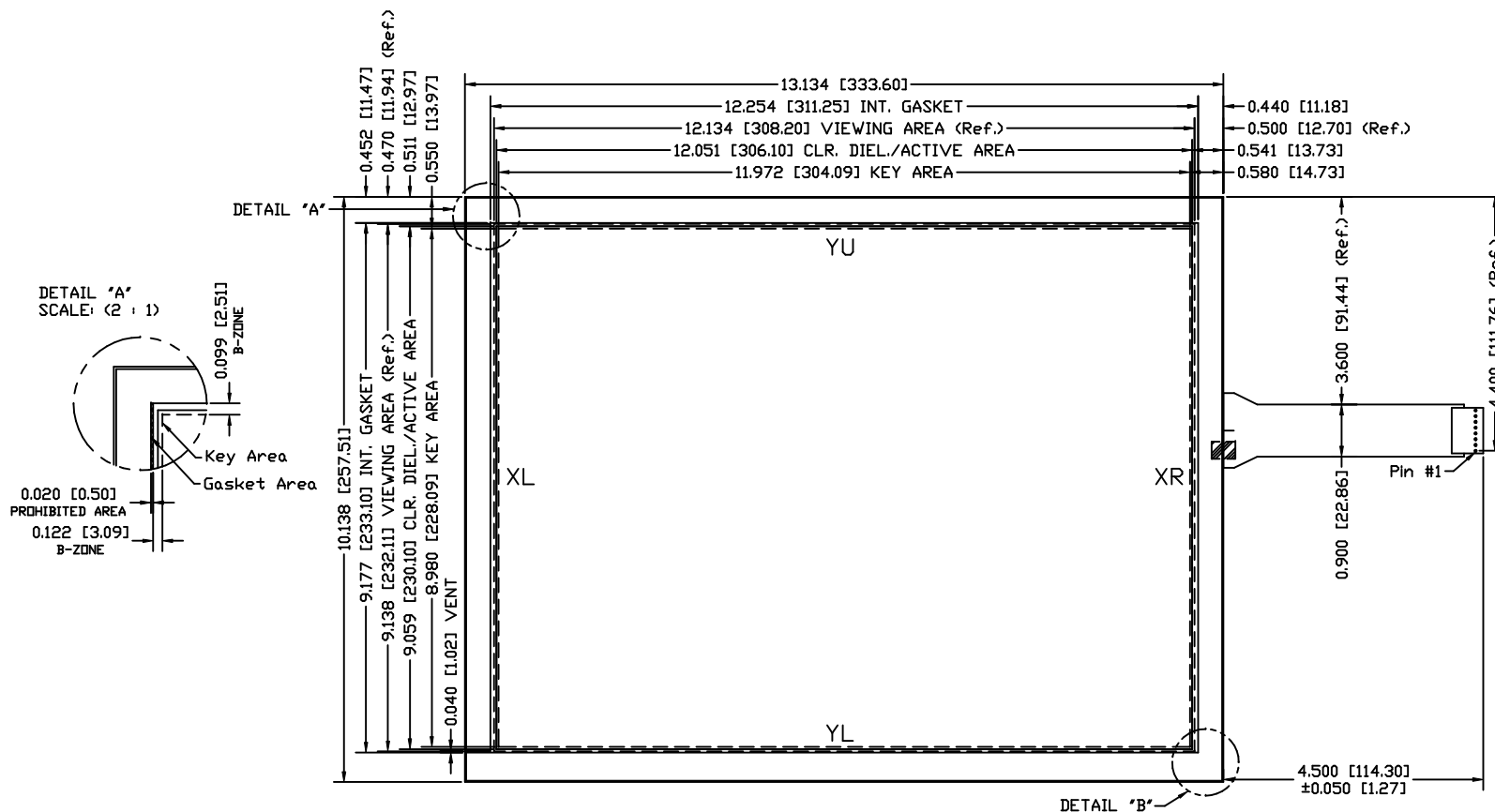
# SENSOR SPECIFICATION

LINEARITY	ACTUATION FORCE	OPTICAL PER.
±1.5% AVE 3% MAX. DEV.	0.10 N (10 g) Min., 0.79 N (80 g) Max. STYLUS: R0.8 TIP, FINGER: R3.0 TIP	89% TRANSPARENCY PER JIS K7361-1

REVISIONS		
LTR	DESCRIPTION	DATE
0	INITIAL RELEASE	3/13/07
1		
2		
3		
4		
5		
6		
7		

### GENERAL NOTES:

1. TOP FILM OFFSET FROM BOTTOM GLASS 0.020 [0.50].
2. MAX. VOLTAGE & CURRENT: 5 VDC, LESS THEN 1mA AT CONTACT POINT FROM TOP LAYER TO BOTTOM TOP.
3. OPERATION TEMPERATURE: -10° TO 60°C
4. OPERATION HUMIDITY: < 40°C 20% to 95% RH NO CONDENSATION.
5. STORAGE TEMPERATURE: -20°C TO 70°C
6. FFC BEND R > 2.0MM NO SHARP CREASE
7. SURFACE HARDNESS: 3H AS PER JIS K 5400
8. COSMETIC INSPECTION: GRADE 3x
9. TERMINAL RESISTANCE:  
YU-YL = 240-990Ω  
XR-XL = 250-830Ω



PIN OUT		
1	YL	BOT. EXCITE
2	YL REF	BOT. SENSE
3	YU REF	TOP SENSE
4	YU	TOP EXCITE
5	XR	RIGHT EXCITE
6	XR REF	RIGHT SENSE
7	XL REF	LEFT SENSE
8	XL	LEFT EXCITE

DRAWING INCOMPLETE WITHOUT BOM!

<b>CADD DRAWING</b> DEC. TOLERANCES: .XXX = ±0.020 [X = ±.50] ANGULAR TOL = ±° FICAL. TOL. X/Z = ±1/16 DIM CODE MILLIMETERS [ INCHES ] MATERIAL SPEC. RES 15.0 FGB FINISH SPEC. RoHS COMPLIANT	<b>NOTICE</b> THIS DRAWING REMAINS A PROPRIETARY DESIGN ORIGINATED BY GUNZE ELECTRONICS USA AND SHALL NOT BE REPRODUCED, COPIED, OR OTHERWISE USED OR DISCLOSED FOR ANY PURPOSES WITHOUT SPECIFICALLY AUTHORIZED BY GUNZE ELECTRONICS USA. CONVENTIONAL ALL RIGHTS RESERVED. GUNZE AND EXPRESSLY RESERVED FOR GUNZE ELECTRONICS USA. THIS INVENT SHALL BE MARKED ON ANY REPRODUCTION THEREIN IN WHOLE OR PART.	P/LOG 03/13/07 LHRUIZ 03/13/07 MILLIMETERS [ INCHES ] QUALITY APPROVAL 03/13/07	<b>GUNZE USA</b> Gunze Electronics USA Corporation 2113 Wells Branch Parkway Allen, Texas 75013 TITLE: SENSOR 15.0D, 8-WIRE PART NO. 100-0920 SCALE: 1 : 1 DRAWN BY: GEUC
--	---	---	--