

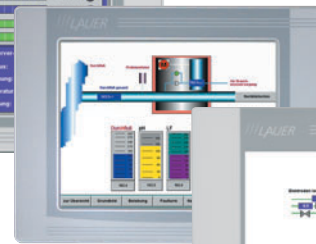


Back side WOP-iT X ... tc

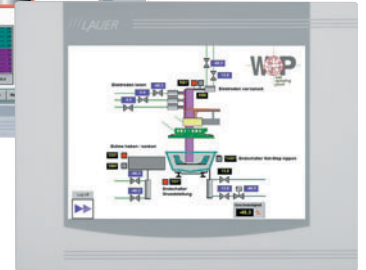
Operating panel with Resistive Touch



WOP-iT X 640tc



WOP-iT X 840tc



WOP-iT X 1000tc

Ordering information

Article	Description	Order number
WOP-iT X 640 tc	Operating panel with 6,4" TFT-Color-Display, Resistive Touch	960.115.0020
WOP-iT X 840tc	Operating panel with 8,4" TFT-Color-Display, Resistive Touch	960.115.0040
WOP-iT X 1000tc	Operating panel with 10,4" TFT-Color-Display, Resistive Touch	960.205.0020

Technical datas

Frontpanel

TFT-Display	6,4": 640 x 480 Pixel	8,4": 640 x 480 Pixel	10,4": 640 x 480 Pixel
Color	65536 Colors		
Input	Resistive Touch		
Protection type	IP 65 front side by DIN EN60529		

Electricity supply

Operation value	24 V ± 20%, polarised
Current consumption	approx. 0,5 - 1,0 A (depends on display)

System

Processor	Intel PXA255 (ARM), 400 MHz
internal main memory	128 MB SDRAM
external memory medium	64 MB Compact Flash Card (maximum 1 GB)
Operating system	VxWorks

Interfaces

Serial 1	RS232 free for disposal
Serial 2	for Bus systems and PLC coupling (e. g. MPI, Profibus, CAN, ...)
LAN	Ethernet 10/100 Mbps
USB	not supported under WOP-iT

General

Front material	Aluminium		
Foil	acid-resistant polyester foil		
Outer dimensions (B x H x T)	6,4":	211 x 156 x 57 mm	
	8,4":	252 x 190 x 61 mm	
	10,4":	318 x 244 x 63 mm	
Mounting dimensions (B x H)	6,4":	197 x 142 mm	
	8,4":	232 x 170 mm	
	10,4":	303 x 229 mm	
Weight	6,4":	approx. 1,2 kg	
	8,4":	approx. 1,9 kg	
	10,4":	approx. 2,3 kg	
Temperature	Operation:	0 ... 50° C	
	Storage:	-20 ... 60° C	