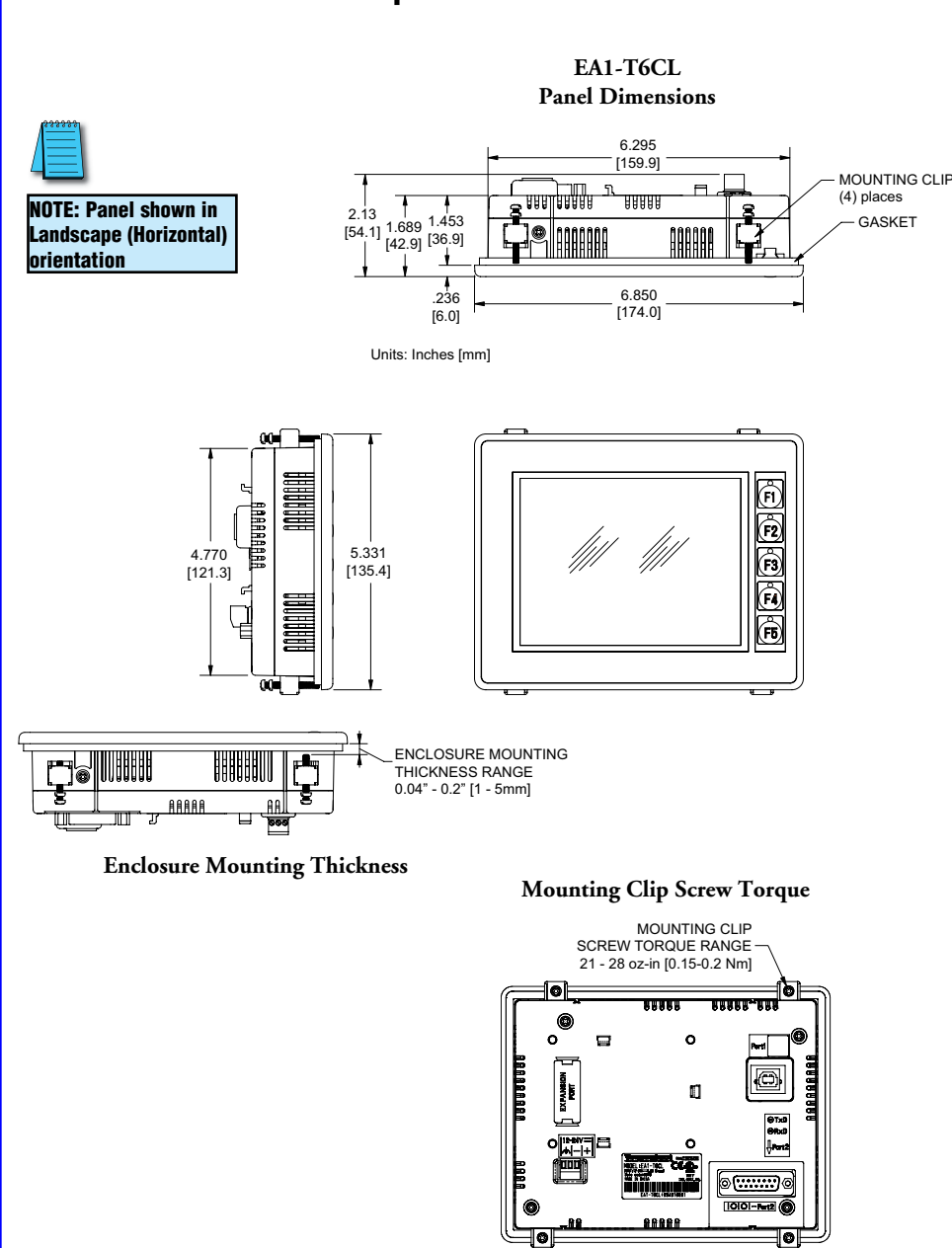


C-more 6" Color Micro-Graphic Panel Specifications

| Specifications | | | | | | | | | | | | | | | |
|--|---|-----------------------------|-----------------|---------------------------|-----------------------------|-------------------------|--|----|-------|--|--|------------------|-----------------|--------------|--|
| Description: | 320 x 240 dots LCD display (Landscape Mode) Five user defined keypad function buttons, and five user defined LEDs | | | | | | | | | | | | | | |
| Display: | <ul style="list-style-type: none"> Type 5.7" TFT Color LCD, graphical characters Resolution 320 (W) x 240 (H) dots (Landscape Mode) 240 (W) x 320 (H) dots (Portrait Mode) Color 32768 colors Display Brightness (Reference) 45 nits (typ) 270 nits (typ) Viewing Area Size 4.574" (W) x 3.483" (H) [116.2 mm x 87.4 mm] Active Area Size 4.535" (W) x 3.400" (H) [115.2 mm x 86.4 mm] Brightness Adjusted from the panel's built-in configuration setup menu Viewing Angle 3, 9 o'clock axis → 50 degrees 6 o'clock axis → 50 degrees 12 o'clock axis → 45 degrees | | | | | | | | | | | | | | |
| Backlight: | <ul style="list-style-type: none"> Type LED Color White User Replaceable No | | | | | | | | | | | | | | |
| Touch Screen: | <ul style="list-style-type: none"> Type Analog resistive, single touch* Operation 82 gram force [0.8 N] maximum Life Minimum of 1,000,000 cycles | | | | | | | | | | | | | | |
| Features: | <ul style="list-style-type: none"> User Memory 32768 bytes Number of Screens Up to 999 – limited by project memory usage Beep (Internal) Yes Keypad Function Buttons Five user defined function key buttons with the ability to custom label with an overlay. Minimum of 500,000 cycles Keypad Function Button LEDs Each function key button includes a red LED that can be user programmed. Programming Port USB Type B Serial Communications 15-pin D-sub serial communications port (RS-232, RS-485 / 422). Expansion Connection Yes – used with optional Keypad Bezels, EA-MG6-BZ2 & EA-MG6-BZ2P | | | | | | | | | | | | | | |
| Screen Objects: | <ul style="list-style-type: none"> Functional Devices Push Button, Switch, Indicator Button, Indicator Light, Graphic Indicator Light, Numeric Display, Numeric Entry, Inc/Dec Value, Bar Graph, Bitmap Button, Static Bitmap, Dynamic Bitmap, Recipe Button, Static Text, Lookup Text, Dynamic Text, Screen Change Push Button, Screen Selector, Adjust Contrast, Function, Key Configuration Object, Real Time Graphics Line Graph, Analog Meter. Static Shapes Lines, Rectangles, Circles and Frames Displayable Fonts Fixed fonts: 6x6, 6x8, 8x16, 16x16, 32x16, 32x32, and Windows fonts | | | | | | | | | | | | | | |
| Electrical: | <table> <tr> <th>USB Bus Power (Programming)</th><th>High Power Mode</th></tr> <tr> <td>5.0 VDC (4.75 – 5.25 VDC)</td><td>12/24 VDC (10.2 – 26.4 VDC)</td></tr> <tr> <td>Supplied from a PC USB.</td><td>Supplied from an external 12-24 VDC class 2 power source</td></tr> <tr> <td>2W</td><td>6.5 W</td></tr> <tr> <td>No fuse required when directly connected to a PC with recommended cable.</td><td>Type AGC fast acting glass fuse, 750 mA, 250 VAC, ADC pin AGC-75</td></tr> <tr> <td>4.5 A for 800 μs</td><td>13 A for 800 μs</td></tr> <tr> <td>Maximum 1 ms</td><td></td></tr> </table> | USB Bus Power (Programming) | High Power Mode | 5.0 VDC (4.75 – 5.25 VDC) | 12/24 VDC (10.2 – 26.4 VDC) | Supplied from a PC USB. | Supplied from an external 12-24 VDC class 2 power source | 2W | 6.5 W | No fuse required when directly connected to a PC with recommended cable. | Type AGC fast acting glass fuse, 750 mA, 250 VAC, ADC pin AGC-75 | 4.5 A for 800 μs | 13 A for 800 μs | Maximum 1 ms | |
| USB Bus Power (Programming) | High Power Mode | | | | | | | | | | | | | | |
| 5.0 VDC (4.75 – 5.25 VDC) | 12/24 VDC (10.2 – 26.4 VDC) | | | | | | | | | | | | | | |
| Supplied from a PC USB. | Supplied from an external 12-24 VDC class 2 power source | | | | | | | | | | | | | | |
| 2W | 6.5 W | | | | | | | | | | | | | | |
| No fuse required when directly connected to a PC with recommended cable. | Type AGC fast acting glass fuse, 750 mA, 250 VAC, ADC pin AGC-75 | | | | | | | | | | | | | | |
| 4.5 A for 800 μs | 13 A for 800 μs | | | | | | | | | | | | | | |
| Maximum 1 ms | | | | | | | | | | | | | | | |
| Environmental: | <ul style="list-style-type: none"> Operating Temperature 0 to 50 °C (32 to 122 °F) Maximum surrounding air temperature rating: 50 °C Storage Temperature -20 to +60 °C (-4 to +140 °F) Humidity 5–95% RH (non-condensing) Environmental Air For use in Pollution Degree 2 environment Vibration IEC60068-2-6 (Test Fc), 5-9 Hz: 3.5 mm amplitude, 9-150 Hz: 1.0G, sweeping, at a rate of 1 octave/min. (±10%), 10 sweep cycles per axis on each of 3 mutually perpendicular axes IEC60068-2-27 (Test Ea), 15 G peak, 11 ms duration, three shocks in each direction per axis, on 3 mutually perpendicular axes (total of 18 shocks) Shock NEMA ICS3-304 (EN61131-2) RFL (145MHz, 440MHz 10W @ 10cm) Impulse 1000 V @ 1 μs pulse Noise Immunity EN61000-4-2 (ESD), EN61000-4-3 (RFI), EN61000-4-4 (FTB), EN61000-4-5 (Serge) EN61000-4-6 (Conducted), EN61000-4-8 (Power frequency magnetic field immunity) For use on a flat surface of Type 1, 4X enclosure (Indoor use only) Enclosure CE (EN61131-2), UL508, CUL Canadian C22.2 No. 142-M95, UL File E157382, CSA file 234884 Agency Approvals | | | | | | | | | | | | | | |
| Physical: | <ul style="list-style-type: none"> Dimensions 6.850" (W) x 5.331" (H) x 2.130" (D) [174.0 mm x 135.4 mm x 54.1 mm] (Landscape Mode) 5.331" (W) x 6.850" (H) x 2.130" (D) [135.4 mm x 174.0 mm x 54.1 mm] (Portrait Mode) Enclosure Mounting Thickness Range 0.04" – 0.2" [1 – 5 mm] Mounting Clip Screw Torque Range 21 – 28 oz-in [0.15 – 0.2 Nm] Depth from bezel rear with options Module 1.894" [47.1 mm] Weight 29.63 oz. (840 g) | | | | | | | | | | | | | | |

*Note: The Touchscreen is designed to respond to a single touch. If it is touched at multiple points at the same time, an unexpected object may be activated.

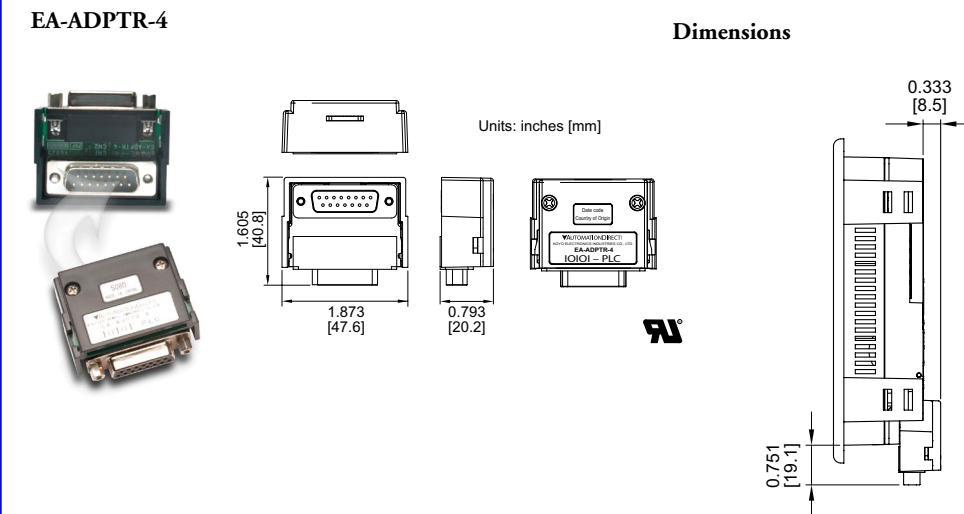
C-more 6" Color Micro-Graphic Panel Dimensions



Communication Port Adapters

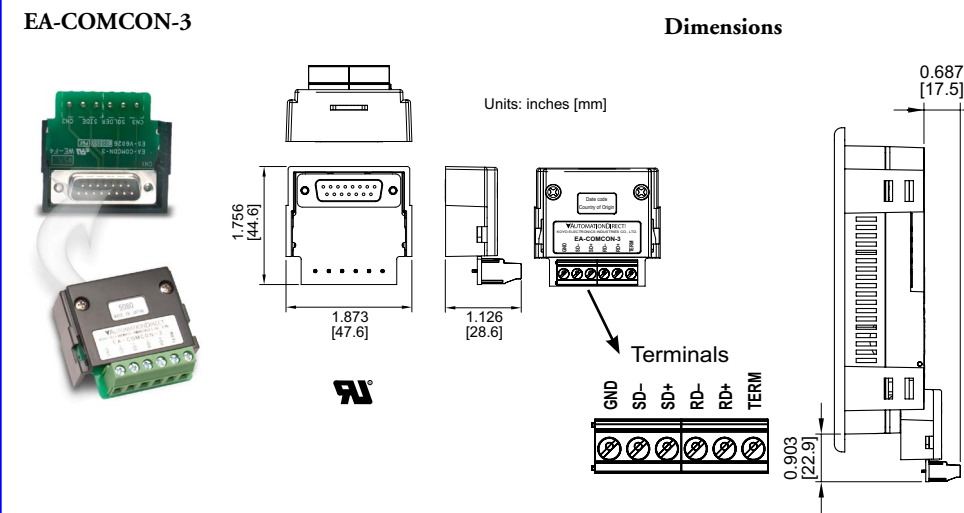
D-SUB 15-pin 90-degree Communication Port Adapter (EA-ADPTR-4)

The EA-ADPTR-4 adapter plugs into the 15-pin serial port on the rear of the 6" panel to allow a PLC communication cable to be plugged in at a 90 degree angle to reduce panel depth requirements. 15-pin straight through pin-out. UL Recognized.

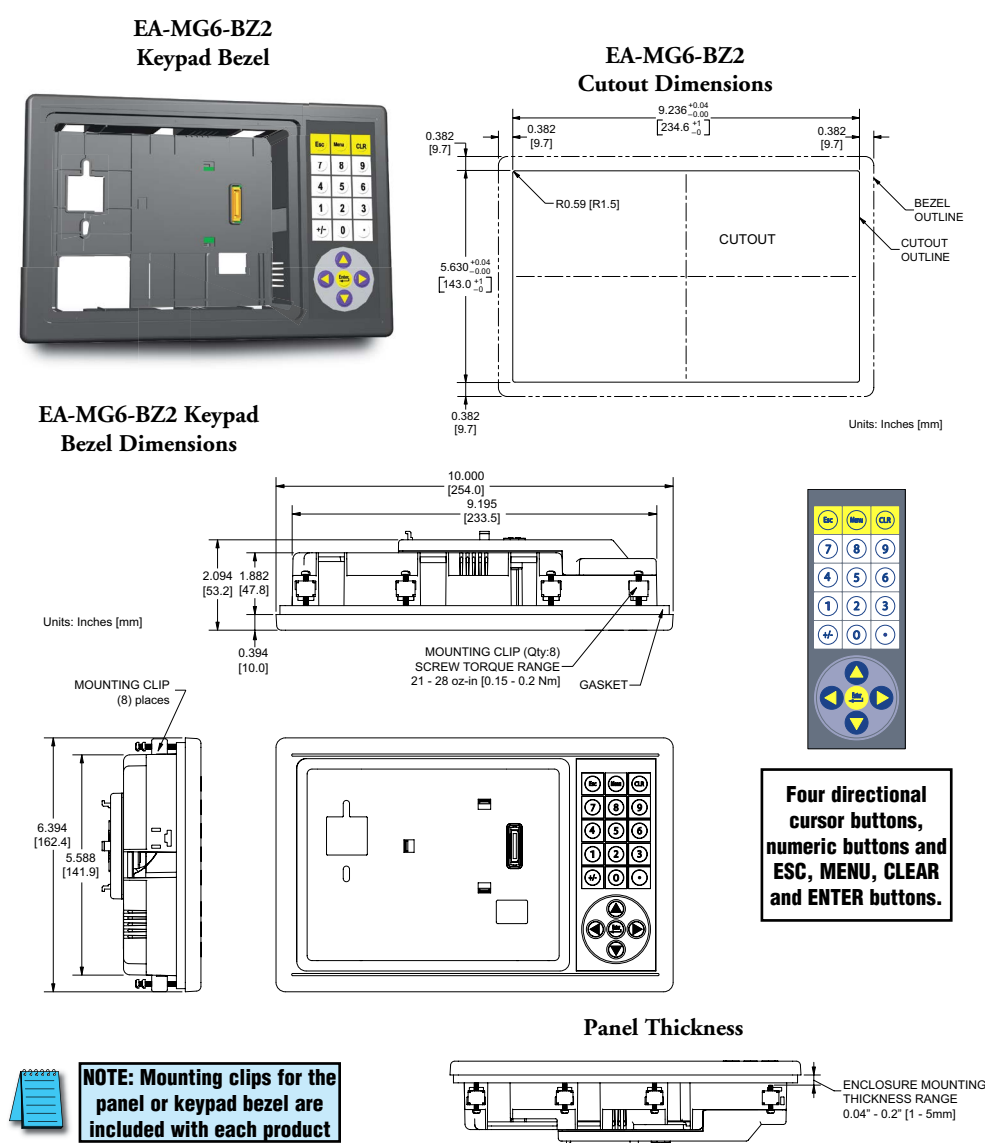


D-SUB 15-pin to Terminal Block Adapter (EA-COMCON-3)

The EA-COMCON-3 adapter plugs into the 15-pin serial port on the rear of the 6" panel to allow wire terminal connections for an RS-422/RS-485/DH-485 PLC communication cable. UL Recognized.



andscape (Horizontal) Keypad Bezel



NOTE: Mounting clips for the panel or keypad bezel are included with each product

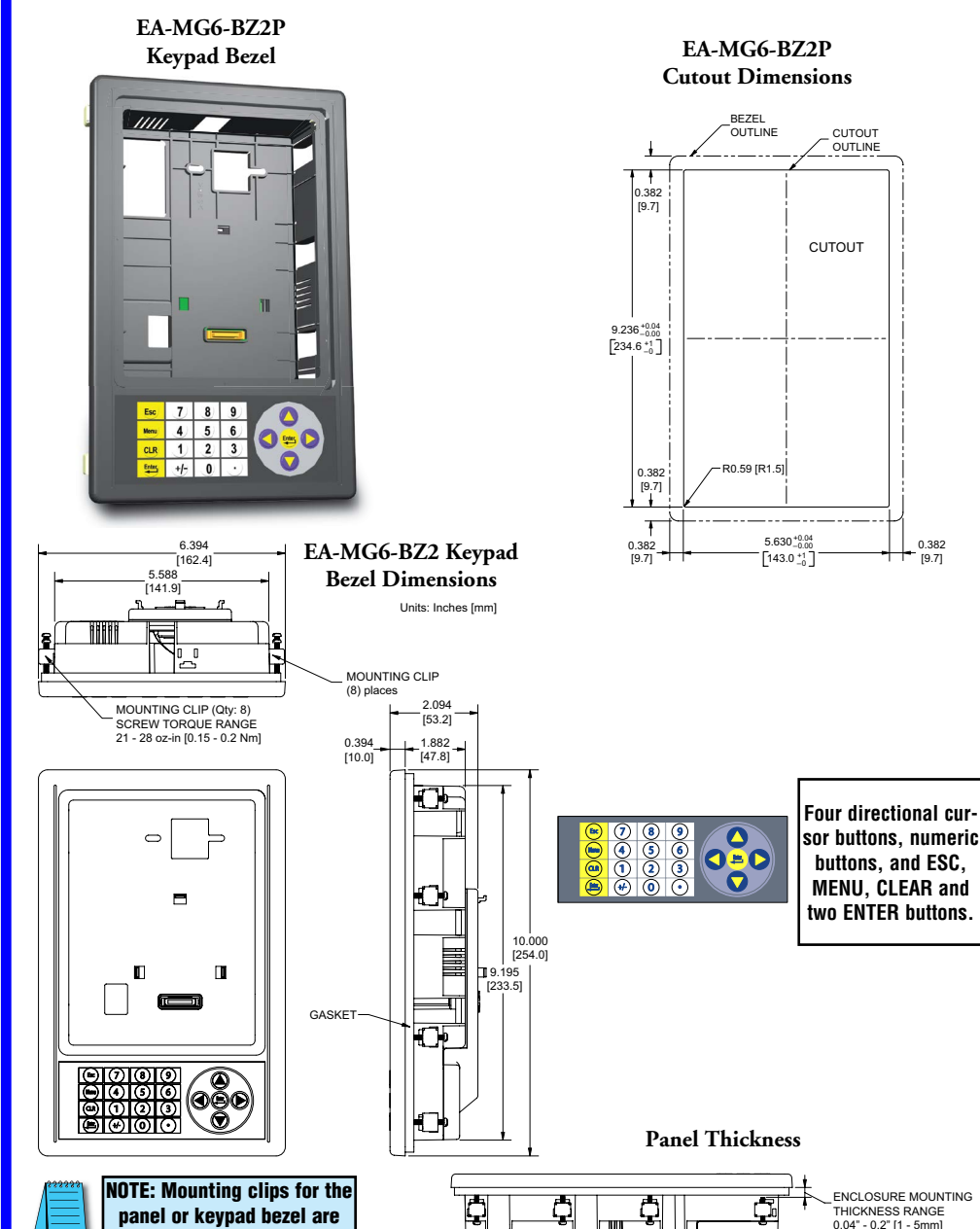
| 20-Button Keypad Bezel Specifications | |
|---------------------------------------|--|
| Part Number: | EA-MG6-BZ2 |
| General: | <ul style="list-style-type: none"> Micro-Graphic Panels Supported EA1-S6ML, EA1-S6MLW, EA1-T6CL Connection Connects with expansion connector on the rear of the C-more 6" Micro-Graphic panel. Power Consumption None Keypad Button Life Minimum of 500,000 cycles Enclosure Mounting (8) mounting clips, EA-MG-BZ2-BRK, included. |
| Environmental: | <ul style="list-style-type: none"> Operating Temperature 0 to 50 °C (32 to 122 °F) Maximum surrounding air temperature rating: 50 °C Storage Temperature -20 to 60 °C (-4 to 140 °F) Humidity 5 to 95 % RH (non-condensing) Environmental air For use in Pollution Degree 2 environment Vibration IEC60068-2-6 (Test Fc), 5-9 Hz: 3.5 mm amplitude, 9-150 Hz: 1.0G, sweeping, at a rate of 1 octave/min. (±10%), 10 sweep cycles per axis on each of 3 mutually perpendicular axes IEC60068-2-27 (Test Ea), 15 G peak, 11 ms duration, three shocks in each direction per axis, on 3 mutually perpendicular axes (total of 18 shocks) Shock NEMA ICS3-304 RFL (145 MHz, 440 MHz 10 W @ 10 cm) Impulse 1000 V @ 1 μs pulse Noise Immunity For use on a flat surface of Type 1, 4X enclosure (Indoor use only) Enclosure CE (EN61131-2), UL508, CUL Canadian C22.2 No. 142-M95, UL File E157382 Agency Approvals |
| Physical: | <ul style="list-style-type: none"> Dimensions 10.000" (W) x 6.394" (H) x 2.488" (D) [254.0 mm x 162.4 mm x 63.2 mm] Weight 26.1 oz. [740 g] |

Replacement Parts

| Part Number | Description |
|------------------------|--|
| EA-MG-BZ2-BRK | Replacement mounting clip for C-more Micro-Graphic panel and keypad bezels (pk of 8) |
| EA-MG-DC-CON | Replacement DC power connector (pk of 5) |
| EA-MG6-S6ML-GSK | Replacement mounting gasket for C-more 6" Micro-Graphic panels |
| EA-MG6-BZ2-GSK | Replacement mounting gasket for C-more 6" Micro-Graphic keypad bezels EA-MG6-BZ2 and EA-MG6-BZ2P |
| EA-MG-S6ML-FKL | Replacement function key label insert for C-more Micro-Graphic panels (pk of 5, 3 blank, 1 F1-F5 for landscape, 1 F1-F5 for portrait) |



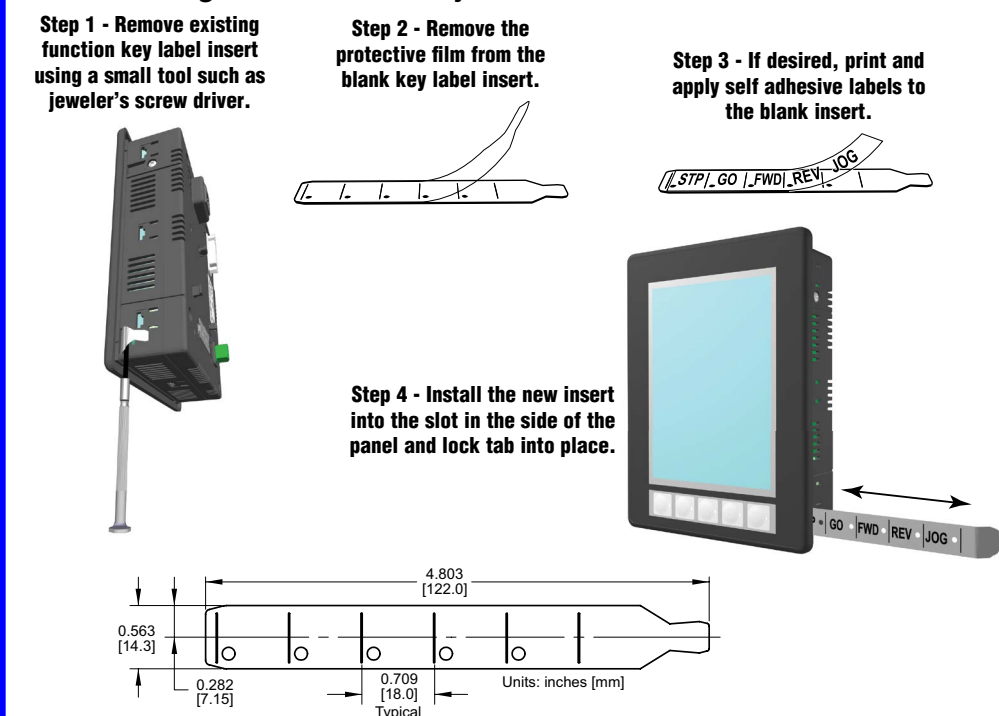
21 Button Landscape (Horizontal) Keypad Bezel



NOTE: Mounting clips for the panel or keypad bezel are included with each product

| 21-Button Keypad Bezel Specifications | |
|---------------------------------------|--|
| Part Number: | EA-MG6-BZ2P |
| General: | <ul style="list-style-type: none"> Micro-Graphic Panels Supported EA1-S6ML, EA1-S6MLW, EA1-T6CL Connection Connects with expansion connector on the rear of the C-more 6" Micro-Graphic panel. Power Consumption None Keypad Button Life Minimum of 500,000 cycles Enclosure Mounting (8) mounting clips, EA-MG-BZ2-BRK, included. |
| Environmental: | <ul style="list-style-type: none"> Operating Temperature 0 to 50 °C (32 to 122 °F) Maximum surrounding air temperature rating: 50 °C Storage Temperature -20 to 60 °C (-4 to 140 °F) Humidity 5 to 95 % RH (non-condensing) Environmental air For use in Pollution Degree 2 environment Vibration IEC60068-2-6 (Test Fc), 5-9 Hz: 3.5 mm amplitude, 9-150 Hz: 1.0G, sweeping, at a rate of 1 octave/min. (±10%), 10 sweep cycles per axis on each of 3 mutually perpendicular axes IEC60068-2-27 (Test Ea), 15 G peak, 11 ms duration, three shocks in each direction per axis, on 3 mutually perpendicular axes (total of 18 shocks) Shock NEMA ICS3-304 RFL (145 MHz, 440 MHz 10 W @ 10 cm) Impulse 1000 V @ 1 μs pulse Noise Immunity For use on a flat surface of Type 1, 4X enclosure (Indoor use only) Enclosure CE (EN61131-2), UL508, CUL Canadian C22.2 No. 142-M95, UL File E157382 Agency Approvals |
| Physical: | <ul style="list-style-type: none"> Dimensions 6.394" (W) x 10.000" (H) x 2.488" (D) [162.4 mm x 254.0 mm x 63.2 mm] Weight 26.1 oz. [740 g] |

Customizing the Function Keys Label Insert



Clear Screen Overlay

