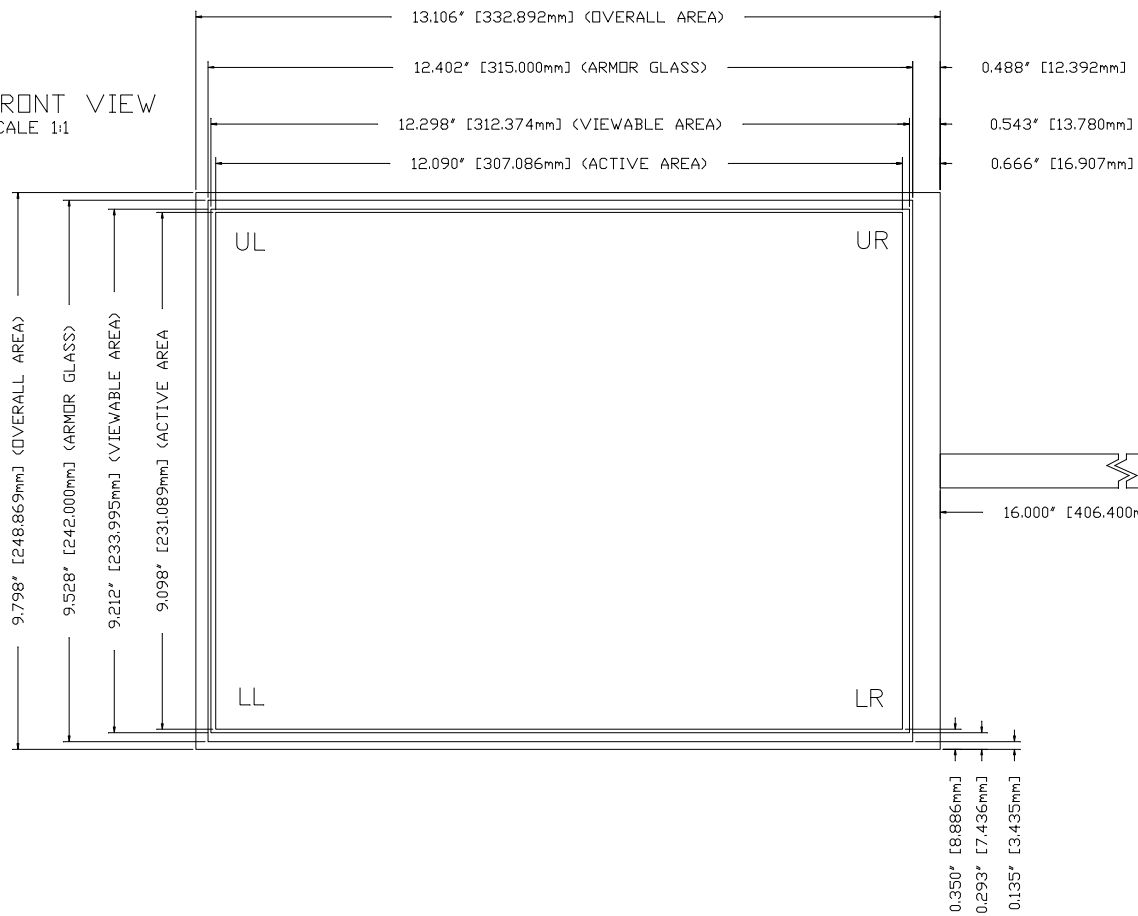


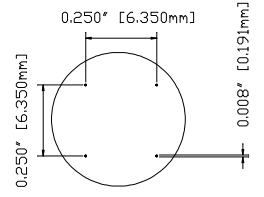
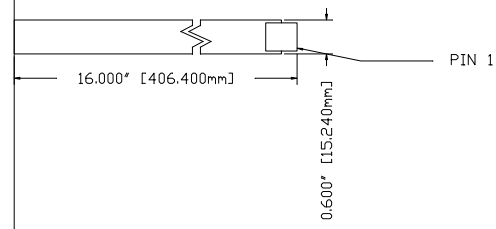
THIS DRAWING AND ALL INFORMATION CONTAINED HEREIN IS THE PROPERTY OF AD METRO. IT IS TO BE USED FOR THE MANUFACTURE OF THE PRODUCT SPECIFICALLY IDENTIFIED IN THE DRAWING. IT IS NOT TO BE REPRODUCED OR TRANSMITTED IN ANY FORM OR BY ANY MEANS, ELECTRONIC OR MECHANICAL, INCLUDING PHOTOCOPYING, RECORDING, OR BY ANY INFORMATION STORAGE AND RETRIEVAL SYSTEM, WITHOUT THE WRITTEN PERMISSION OF AD METRO. ALL RIGHTS ARE RESERVED.

REVISIONS			
LET	DESCRIPTION	DATE	BY
A	INITIAL RELEASE	06-19-09	DZ
B	CHANGE DRAWING STYLE	12-23-09	DZ

FRONT VIEW  
SCALE 1:1



PIN	X1
1	LL
2	UL
3	SENSE
4	LR
5	UR



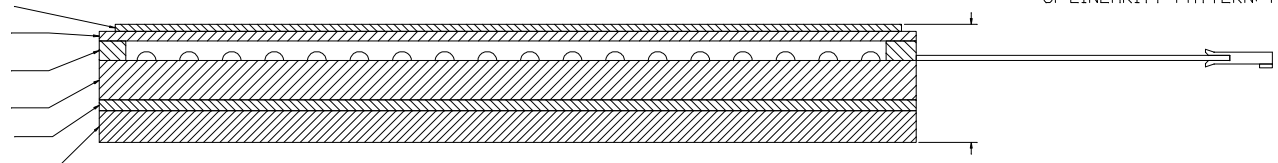
DETAIL A - DOT SPEC  
SCALE 5:1

NOTES:

1. SUBSTRATE: 3.18MM ITO GLASS.
2. ALL DIMENSIONS IN INCHES [MILLIMETERS].
3. SAFETY SEAM ON ALL EDGES.
4. CABLE: 5-PIN FFC TYPE.
5. CONNECTOR: AMP TYPE WITH 0.1" [2.54MM] CENTERS, NON LATCHING, PART NUMBER 487378-4.
6. TOUCH SCREEN TO BE ACTIVATED WITHIN ACTIVE AREA ONLY. AREA BETWEEN ACTIVE AND VIEWABLE AREAS MUST HAVE A SCREENED ON DIELECTRIC.
7. TOTAL SENSOR THICKNESS: 0.220" [5.600MM].
8. LINEARITY PATTERN: PEPPER.

SIDE VIEW  
NOT TO SCALE

- 0.1 MM BORSILICATE GLASS
- 0.188MM A/G POLYESTER FILM
- SPACER ADHESIVE
- 3.18MM ITO GLASS
- 0.4MM LAMINATION BONDLINE
- 1.6MM CHEMICALLY STRENGTHENED GLASS



0.220" [5.600mm]  
(APPROXIMATE)

AD metro A 9 METRO - 1181 PARSIFEN ST - OTTAWA, ONTARIO

AD15.0ULTRA

DRAWN BY: DZ  
DATE: 12-23-09  
PROJECT NAME: AD15.0ULTRA

PROJECT/ASSET NO.:  
SHEET: 1 OF 1

SOLE SCALE: 1:1  
SHEET: 1 OF 1

PART NO.: 3A99150-C16

TOLERANCING  
UNLESS OTHERWISE SPECIFIED  
0.004 0.005 0.005 0.005  
3D NET SCALE DRAWING